

Imray Correction Notice ICA281

14 July 2022

Chart **A281** WGS 84

Edition 2006

Versions available:

New Edition (Corrected to November 2006)

NOTES

Below is a complete list of corrections issued since the 2006 edition of this chart was published.

Each correction is issued with an ILNW reference number and year.

Corrections are listed chronologically in ascending order.

1 **Sainte-Marie (Plan)**

The latitude labels on this plan mistakenly state 07' where they should read 06'.5. (ILNW 302/09)

2 **Les Saintes, Baie du Marigot**

Insert drying wk sym, plus lgd *Masts PA*, in 15°52'·60N 61°34'·65W. (ILNW 043/10)

3 **Les Saintes, Terre-de-Haut, Tête Rouge eastwards**

Insert jetty joining:

15°51'·85N 61°35'·27W (shore)

15°51'·90N 61°35'·25W (ILNW 044/10)

4 **Les Saintes, Terre-de-Haut, Anse du Bourg**

Substitute Wk 2·8m for depth 2·9m in 15°52'·24N 61°35'·06W (ILNW 370/10)

5 **Grand-Bourg (Inset) (correction superseded - see ILNW 328/15)**

Add note to plan:

WARNING

This inset has not been correctly positioned in relation to WGS84 datum. Any positions obtained from satellite navigation systems (normally referred to WGS84 datum) should be moved 0·10 minutes NORTHWARD and 0·01 minutes EASTWARD to agree with this inset plan. (ILNW 056/13)

6 **Grand-Bourg (Inset) (correction superseded - see ILNW 328/15)**

Work on the port marina at Grand-Bourg has now been completed.

Amend new eastern breakwater to join:

15°53'·03N 61°19'·07W

15°53'·00N 61°19'·09W

15°52'·93N 61°19'·05W

Move Lt FI(2)G.6s8m6M in 15°52'·92N 61°19'·01W to end of this new breakwater, and delete old breakwater.

Full details will be included on the next edition of this chart. (ILNW 057/13)

7 **Marie-Galante (Inset)**

Move Lt FI(2)G.8M to 15°52'·83N 61°19'·06W. (ILNW 057/13)

8 **Marie-Galante, Baie de Saint Louis**

Insert *Obstr* symbol in:

15°56'·61N 61°20'·44W

15°58'·53N 61°19'·46W (ILNW 485/13)

9 **Les Saintes, Grand Îlet SE**

Insert dangerous wreck symbol, and assoc. legend *Rep (2013)* in 15°50'·07N 61°34'·92W. (ILNW 14/15)

10 **Grand-Bourg (Inset)**

Insert attached WGS 84 correct inset plan of Grand-Bourg (ILNW 328/15)

11 **Les Saintes, Terre-de-Haut N**

Move Lt beacon **BA** from 15°52'·79N 61°35'·28W to 15°52'·82N 61°35'·26W (ILNW 503/15)

12 **Sainte-Anne, Grande Passe (Inset)** (*correction amended see ILNW 345/22*)

Move R spec con Lt buoy F.I.R.2-5s from 16°13'·08N 61°23'·01W to 16°13'·10N 61°23'·00W (ILNW 586/15)

13 **AIDS TO NAVIGATION**

Charted aids to navigation throughout the Eastern Caribbean should be used with caution. Many aids to navigation either moved or were destroyed during recent hurricanes in this region. The replacements and repositioning of these aids is progressing slowly. Yachtsmen are advised to use visual navigation. (Street 2018) (ILNW 574/18)

14 **Northern Approach to Pointe-à-Pitre (Inset)**

Add note to plan:

RIVIÈRE SALÉE BRIDGES

The Rivière Salée is closed to navigation to mast vessels. What were previously opening bridges are now fixed bridges. (Street 2018) (ILNW 575/18)

15 **Les Saintes, Terre-de-Haut**

Replace depth 0·4m with Rk awash sym in 15°52'·83N 61°35'·21W

Anchoring is prohibited in Anse à Cointe. Insert restricted area line, no anchoring, between 15°51'·88N 61°36'·00W (Pain de Sucre) and 15°51'·58N 61°36'·22W (Pointe à Cointe).

Delete anchorage sym in 15°51'·83N 61°36'·03W (ILNW 592/18)

16 **Les Saintes, Terre-de-Haut NE**

Yachtsmen are advised that entry is prohibited to Baie de Pont Pierre. Insert restricted area line, entry prohibited, between 15°52'·71N 61°34'·10W and 15°52'·56N 61°33'·98W (ILNW 18/19)

17 **Baie du Marigot, Les Saintes**

Insert submarine cable joining:

15°52'·38N 61°34'·74W

15°52'·71N 61°34'·58W

15°53'·04N 61°34'·61W

15°53'·29N 61°34'·60W (ILNW 636/20)

18 **Saint Louis, Marie-Galante**

Insert submarine cable joining:

15°57'·92N 61°19'·09W

15°58'·02N 61°19'·75W

15°58'·32N 61°20'·22W

15°58'·64N 61°20'·41W (ILNW 636/20)

19 **Les Saintes, Terre-de-Bas, Anse des Muriers**

Insert breakwater between:

15°51'·22N 61°36'·93W

15°51'·20N 61°36'·96W. Delete depth 3·1m close (ILNW 329/22)

20 **Sainte-Anne, Grande Passe (Inset)**

Move R con Lt buoy F.I.R.2-5s from 16°13'·10N 61°23'·00W to 16°13'·05N 61°22'·98W (ILNW 345/22)

Corrections to notes on the chart reverse

GRANDE ANSE

Replace: According to the latest French chart, you can take 1·7 metres into the shallowest part of the channel, whilst the basin has been dredged to 2 metres.

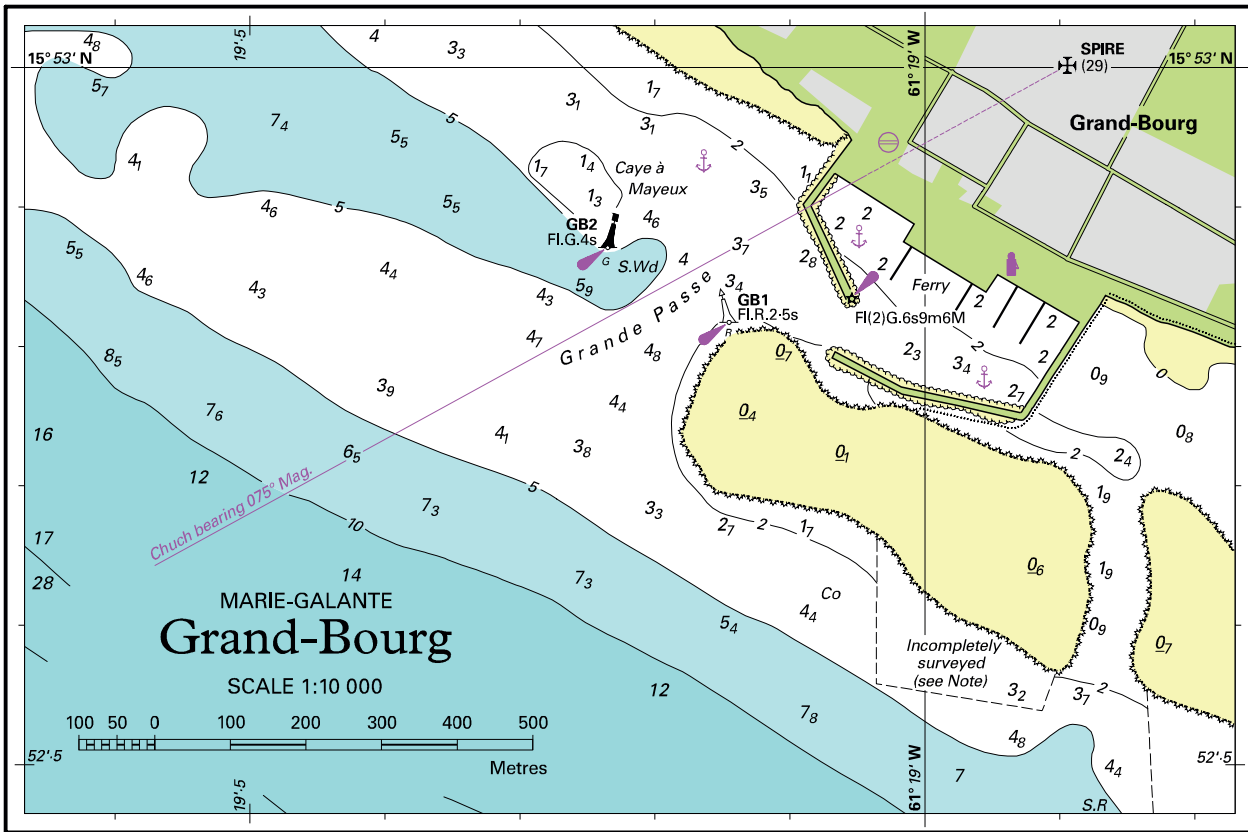
with: Depths in the approaches and harbour are reportedly different to those shown. The entrance channel has been dredged to 2·7m, the basin inside to 2·3m and there is 2·1m alongside the fuel dock. (ILNW 074/10)

SAINTE-ANNE

Replace: You will find 1·5 or possibly 2 metres of water inside **with:** The fishing harbour has reportedly now been dredged to an estimated depth of 2m. (ILNW 145/12)

NORTH APPROACH TO POINTE-À-PITRE VIA RIVIÈRE SALÉE

At paragraph beginning "There are now three bridges across the River Salee..." **add:** As of July 2013, Rivière Salée is closed to navigation whilst major bridge repairs are underway. This work is expected to continue for at least a year. (ILNW 254/13)



Block correction for A281
 ILNW 328/15