

Imray Correction Notice ICA271-1

4 October 2023

Chart **A271** WGS 84

Edition 2017

Versions available:

New Edition (corrected to June 2017)

Update (corrected to October 2019)

Update (corrected to October 2020)

Update (corrected to October 2023)

NOTES

Below is a complete list of corrections issued since the 2017 edition of this chart was published.

Each correction is issued with an ILNW reference number and year.

Corrections are listed chronologically in ascending order.

For Update versions of this chart, please check the bottom left corner of the chart to determine the last applied correction.

Any further corrections will be applicable from that point onwards.

1 AID TO NAVIGATION

Charted aids to navigation throughout the Eastern Caribbean should be used with caution. Many aids to navigation either moved or were destroyed during recent hurricanes in this region. The replacements and repositioning of these aids is progressing slowly. Yachtsmen are advised to use visual navigation. (Street 2018) (ILNW 574/18)

2 Pelican Island NE

Insert dangerous underwater Rk sym in:

17°06'·85N 61°41'·67W

17°06'·41N 61°41'·55W

17°06'·35N 61°41'·30W

Insert Rk awash sym in 17°06'·70N 61°41'·38W (ILNW 661/18)

3 North Sound

Insert dangerous wreck sym. plus assoc lgd *Rep.* (2019) in 17°08'·87N 61°45'·18W (ILNW 120/19)

4 Northwest Channel & Hog John Bay

Insert accompanying block correction centred on 17°08'·99N 61°51'·85W

Insert *Wk*, depth 1·0m in 17°07'·74N 61°52'·64W (ILNW 543/19)

5 St John's Harbour

Amend Lt:

Fl.G.4s32m5M to Fl.R.7s32m5M in 17°07'·71N 61°52'·74W plus amend Lt sectors to R

Fl.R.4s15m5M to Fl.G.7s15m5M in 17°07'·83N 61°51'·83W plus amend Lt sectors to G (ILNW 664/19)

6 St John's Harbour

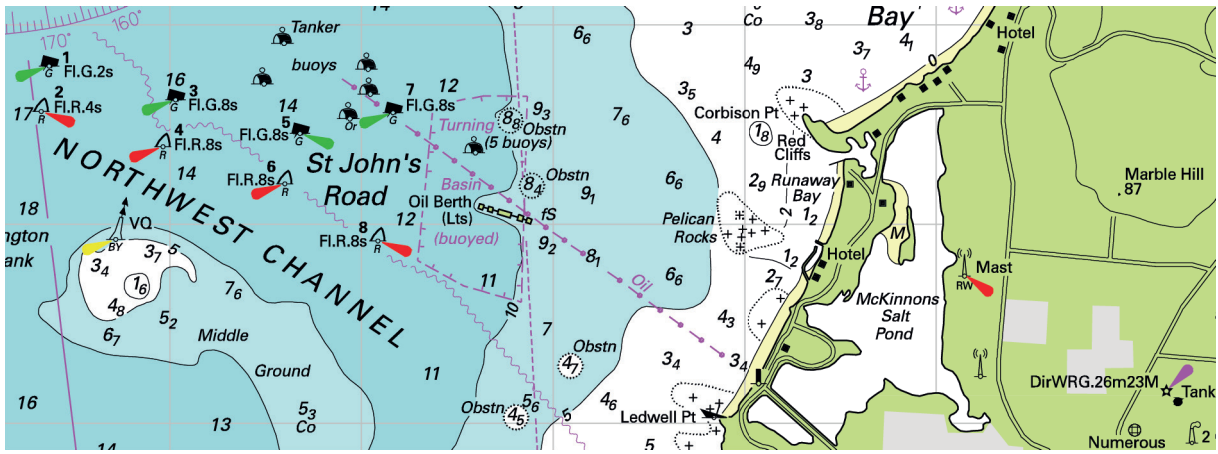
Delete Y spar buoy with x topmark in:

17°07'·43N 61°51'·20W

17°07'·37N 61°50'·98W

17°07'·32N 61°50'·92W

17°07'·30N 61°51'·34W (ILNW 217/23)



Block correction for A271
ILNW 543/19