

Imray



CHARTS BOOKS & DIGITAL

Catalogue
2024

Contents

Imray charts **2**

Imray books **4**

English Channel **6**

West Coast & Ireland **10**

Scotland **14**

North Sea, Baltic & Norway **18**

North Atlantic **22**

Caribbean **26**

Western Mediterranean **28**

Eastern Mediterranean & Black Sea **32**

World cruising **36**

Almanacs **38**

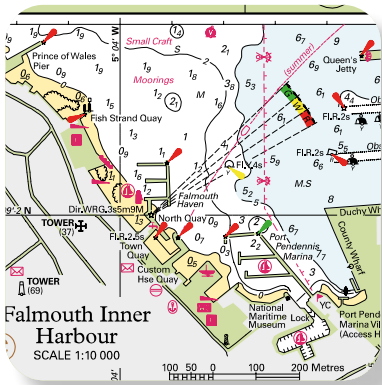
General interest **39**

Inland Waterways of Great Britain **40**

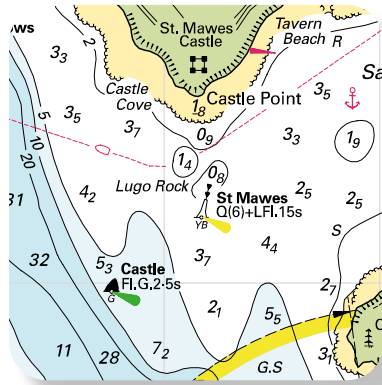
Inland Waterways of Europe **42**

Imray charts

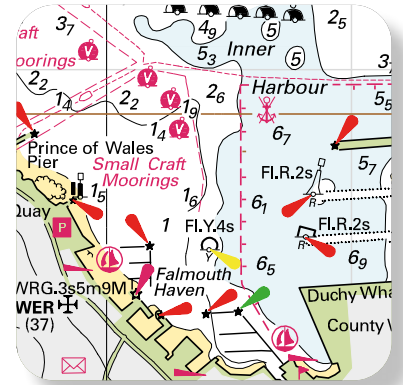
Imray Charts are the first port of call for the leisure sector, with award-winning cartography. Official hydrographic office data is enhanced with information from Imray's networks.



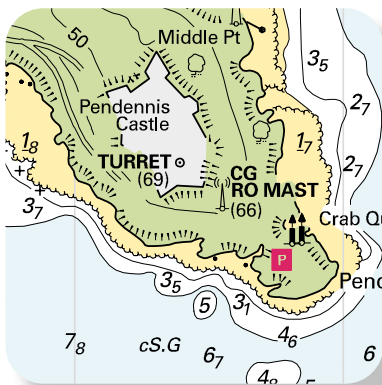
Official data PLUS Imray small craft information



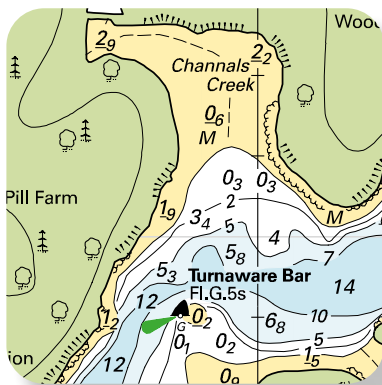
International Hydrographic Organisation standard symbols and abbreviations



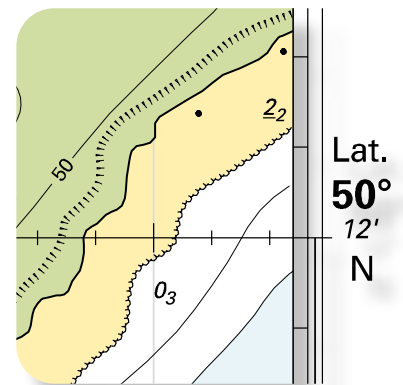
Lights and buoys shown in their intended colours



Land features to help with navigation



Intuitive colour scheme



Fine latitude and longitude grids



Maritime and Coastguard Agency Recognised
 Imray charts are approved for use on yachts and motor boats under 24 metres

Updates
 The information shown on charts is liable to constant change.
 Download weekly Correction Notices from www.imray.com



C charts

Full size

For passage planning and coastal sailing with inset plans detailing harbours and estuaries at larger scales.

Printed on matt water-resistant Pretex® paper.

Folded A4 size in recycled PVC wallets.

Flat and laminated sheets available on request.

Sheet size 787mm x 1118mm (31" x 44")



A / B / D / E / G / M / Y charts

For passage planning and coastal sailing with inset plans detailing harbours and estuaries at larger scales.

Printed on matt water-resistant Pretex® paper.

Folded A4 size in recycled PVC wallets.

Flat and laminated sheets available on request.

Sheet size 640mm x 900mm (25" x 35½")

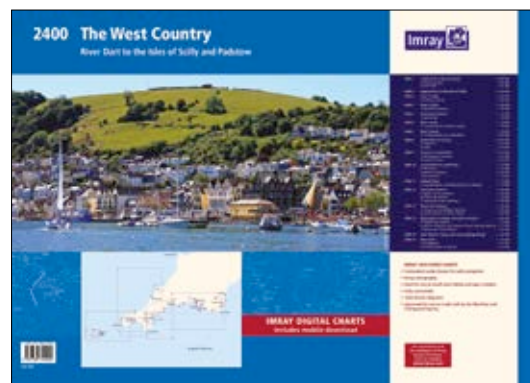


Chart packs

Packs of small format charts designed for use on small chart tables and in open cockpits.

Small and medium scale passage charts plus larger scale harbour plans and inset plans.

Imray Digital charts included as a download.

Spiral-bound atlases or loose leaf packs.

Sturdy plastic wallet.

Sheet size 420mm x 560mm (A2) printed on strong cartridge paper.

Small format Y charts

High detail

Individual charts from our chart packs are available as Y charts.

Sheet size 420mm x 560mm (A2)



Imray Digital Charts

Imray's award-winning raster charts plus a selected range derived from other hydrographic offices including France and the Netherlands

Imray Navigator App



Chart plotters

Imray charts are available for electronic charting systems. Various publishers also offer navigation packages for use on Android apps and PCs.

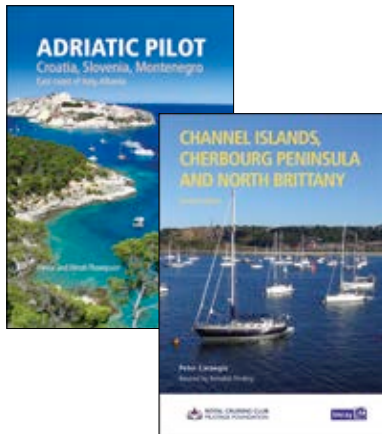


Full details and areas covered at www.imray.com

Imray books

With more than 100 titles from the best sailing authors, Imray pilot books and cruising guides provide sailing directions, reference information and inspiration for cruising areas worldwide, from northern Europe and the Mediterranean to the Caribbean and Asia.

Imray books are regarded internationally as the most comprehensive and authoritative available.



Imray pilot books and cruising guides

Worldwide coverage of popular and less explored sailing areas
Inspiration and information that you need for planning your adventures.

A guiding hand on the shoulder for new sailors and new places.

Almanacs

A wealth of data for cruising in northwest Europe and the Mediterranean.

Published annually or biennially.

Inland waterways maps and guides

Coverage of popular inland waterways in the UK and Europe guides.

Navigation notes, handy reference maps and narrative.

Maps show waterways, facilities, locks and other features for navigation.

Key features

- Imray cartography
- Information on ports, marinas, berths and anchorages, facilities
- Details of passages, pilotage into harbours and through tricky passages
- Advice about passage planning, provisioning, climate and weather and shoreside activities
- Data including tidal heights and streams, navigation aids, contact numbers and VHF, lights
- Regular updates and supplements – download from www.imray.com

Imray books are written by experienced and popular sailing authors including



Tom Cunliffe



Rod & Lu Heikell
Photo Andreas Fritsch



Garth Cooper



Dick Holness



William Thomson

In partnerships with sailing clubs including



PDF cruising guides

PDF versions are available for most Imray pilot guides.

These offer the same quality and carefully-checked content of our printed pilot guides, but you can view them online on your desktop or load several onto your mobile or tablet to save space in your luggage.

Click on the 'Buy PDF Book' tab on the book pages at www.imray.com. This links to Google Play, where you can preview before you buy.



Imray podcasts

Podcaster Ceri Hurford-Jones meets up with sailors from the Imray 'family' to explore their favourite cruising grounds, hear about the moments and places that have inspired them and the lessons learnt along the way.

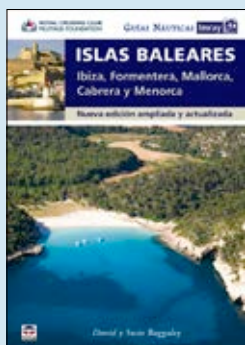
The free podcasts episodes run for half an hour. Guests cover a whole host of topics including navigation, pilotage, tides, winds and seas.

Available on Spotify, Apple Podcasts, Google Podcasts and most other popular platforms.




Foreign language editions


Foreign language editions of various Imray pilots are available from publishers as follows:





 **German**
Delius Klasing
www.delius-klasing.de


 **Italian**
Edizioni Il Frangente
www.frangente.com

 **French**
Fleurus Editions / Vagnon
www.vagnon.fr

 **Polish**
Wydawnictwonautica
www.wydawnictwonautica.pl

 **Spanish**
Ediciones Tutor SA / Editorial El Drac SL
www.edicionestutor.com

 **Russian**
My Planet
www.myplanetbooks.ru

 **Turkish**
Ilke Kitap
www.ilkekitap.com

English Channel

From the popular and busy hubs of UK sailing on the south coast to the nearest cross-channel delights of the French coast and Channel Islands

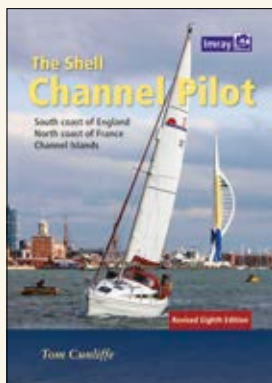


WEST COUNTRY PILOT

Lyme Regis to Land's End
G Macintosh

This new edition is an essential companion for anyone cruising the scenic waters of south Devon and Cornwall. Starting at Lyme Regis, *West Country Pilot* traces the coast westward towards the Isles of Scilly, presenting clear sailing directions for these iconic cruising grounds. In addition to passage notes and harbour guides, the pilot captures the spirit of the West Country, a region rich in maritime history. Informative photography and Imray chartlets will inspire your next cruise. This comprehensive guide provides all the information you need to effortlessly passage plan and sail in the West Country, making your experience both enjoyable and well-informed.

A4. Soft cover. Full colour.
978 178679 065 1 1st ed. 2024



THE SHELL CHANNEL PILOT

South coast of England
North coast of France
Channel Islands

Tom Cunliffe

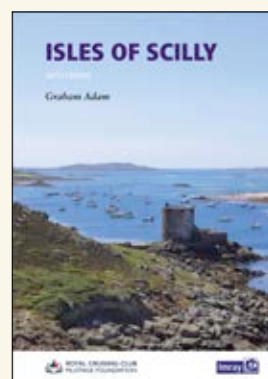
A4. 464 pp. Hardback. Full colour.
978 184623 700 3 Revised 8th ed. 2021



CHANNEL ISLANDS, CHERBOURG PENINSULA, AND NORTH BRITTANY

RCCPF / Peter Carnegie
revised by Annabel Finding

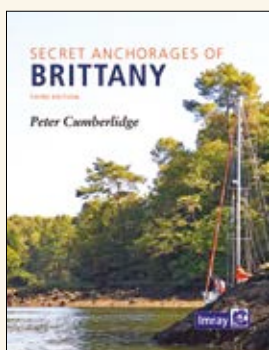
A4. 392 pp. Hard cover. Full colour.
978 178679 373 7 2nd ed. 2023



ISLES OF SCILLY

RCCPF / Graham Adam

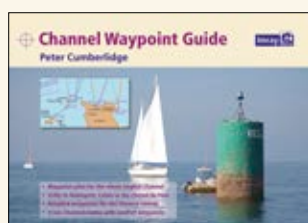
A4. 100 pp. Soft cover. Full colour.
978 178679 005 7 6th ed. 2020



SECRET ANCHORAGES OF BRITTANY

Peter Cumberlidge

246 x 189mm. 295 pp. Hard cover.
Full colour.
978 184623 815 4 3rd ed. 2016



CHANNEL WAYPOINT GUIDE

Peter Cumberlidge

Charts devised by Jane Cumberlidge

A4. Landscape. 156 pp. Soft cover.
Full colour.
978 184623 383 8 1st ed 2011



HIDDEN HARBOURS OF SOUTHWEST BRITAIN

Dag Pike

250mm x 210mm. 64 pp. Soft cover.
Full colour.
978 184623 204 6 1st ed 2010

EXPLORE
with Imray



Imray **PODCASTS**
Explore more with
Imray

Royal Cruising Club Pilotage
Foundation author
Annabel Finding on sailing
the Channel Islands

www.explorewithimray.com
to discover more



English Channel charts

C3 Isle of Wight

1: 60 000 WGS 84

Plans Needles Channel, Bembridge Harbour & Approaches

C4 Needles Channel to Portland Bill

1: 70 000 WGS 84

Plans Portland Harbour, Weymouth Harbour, Lulworth Cove, Worbarrow Bay, Chapman's Pool, Swanage, Studland Bay, Christchurch, Continuation of River Stour

C5 Portland Bill to Salcombe Harbour

1: 100 000 WGS 84

Plans Bridport Harbour, Lyme Regis, Exmouth, Teignmouth Harbour, Torquay Harbour, Brixham Harbour, Tor Bay, River Dart Entrance

C6 Salcombe to Lizard Point

1: 100 000 WGS 84

Plans Salcombe, Plymouth Sound, Looe, Polperro Harbour, Fowey Harbour and Approaches, Charlestown Harbour, Mevagissey Harbour, Falmouth Harbour

C7 Falmouth to Isles of Scilly and Trevose Head

1: 120 000 WGS 84

Plans Newquay Bay, Saint Ives, St Mary's Road, Hugh Town, Mousehole, Newlyn Harbour, Penzance, Saint Michael's Mount, Porthleven, Mullion Cove

C8 Dover Strait - North Foreland to Beachy Head and Boulogne

1: 120 000 WGS 84

Plans Sovereign Harbour, Rye Harbour, Folkestone Harbour, Dover, River Stour Entrance, Ramsgate, Calais, Boulogne-sur-Mer

C9 Beachy Head to the Isle of Wight

1: 120 000 WGS 84

Plans Eastern Approaches to the Solent, Littlehampton, Shoreham Harbour, Brighton Marina, Newhaven, Sovereign Harbour

C10 Western English Channel - Passage Chart

1: 375 000 WGS 84

C12 Eastern English Channel - Passage Chart

1: 375 000 WGS 84

Plans Dover Strait

C14 Plymouth Harbour and Rivers

1: 20 000 WGS 84

Plans Plymouth, Mayflower Marina, Sutton Harbour and Queen Anne's Battery Marina, River Yealm, Continuation of Saint Germans or Lynher River, Continuation of River Tamar

C15 The Solent - Bembridge to Hurst Point & Southampton

1: 35 000 WGS 84

Plans River Hamble, River Itchen, Hythe Marina Village, Lymington River, Newtown River, Bembridge Harbour, Beaulieu River, Continuation of Beaulieu River, Cowes Harbour, Yarmouth Harbour, Wootton Creek

C18 Western Approaches to the English Channel & Bay of Biscay - Passage Chart

1: 1 000 000 WGS 84

C31 Dover Strait to Le Havre

1: 200 000 WGS 84

Plans Sovereign Harbour, Boulogne-sur-Mer, Le Tréport, Dieppe, St-Valéry-en-Caux, Fécamp, Approaches to Le Havre & River Seine, Le Havre Yacht Harbour

C32 Baie de Seine - Le Havre to Cherbourg

1: 155 000 WGS 84

Plans Le Havre Yacht Harbour, Honfleur, Deauville/Trouville, Dives-sur-Mer, Ouistreham, Courseulles-sur-Mer, **Arromanches**, Port-en-Bessin, Grandcamp-Maisy, Baie du Grand Vey, Saint-Vaast-La-Hougue, Barfleur, Cherbourg, Port Chantereyne (Cherbourg)

C33A Channel Islands

1: 120 000 WGS 84

Plans Alderney Harbour, Beaucette Marina, St Sampson Hbr, St Peter Port, Creux Harbour Approaches, Gorey, Omonville, Herm Harbour & Rosière Anchorage, Diélette, Carteret, Bays of Sark, Little Russel

C33B Channel Islands and North Coast of France

1: 120 000 WGS 84

Plans St-Quay-Portrieux, Binic, Dahouët, Erquy, Saint-Cast-Le-Guildo, St-Malo Approaches, St-Malo, Granville, St Helier Approaches (Jersey), St Helier Harbour

C34 Cap d'Erquy to Ile de Batz

1: 110 000 WGS 84

Plans Primel, Le Léguer, Trébeurden, Ploumanac'h, Anse de Perros, Perros-Guirec, Port-Blanc, Approaches to Rivière de Tréguier, Tréguier, Approaches to Rivière de Trieux and Paimpol, Port de la Corderie (Ile de Bréhat), Port Clos (Ile de Bréhat), Lézardrieux, Paimpol, St-Quay-Portrieux, Binic, Port du Légue, Dahouët

C35 Baie de Morlaix to L'Aber-Ildut

1: 75 000 WGS 84

Plans L'Aber-Ildut, Argenton, Portsall, Approaches to L'Aber Wrac'h & L'Aber Benoît, Port du Pontusval, Mogueéric, Roscoff, Port de Morlaix

C80 British Isles

1: 1 500 000 WGS 84

Y23 Poole Harbour

1: 17 000 WGS 84

Plans Holes Bay, Salterns Marina, Moriconium Quay & Lake Yard Marina

Y28 Langstone Harbour

1: 21 500 WGS 84

Plans Southsea Marina

Y29 Chichester Harbour

1: various WGS 84v

Plans Northney Marina, Emsworth Yacht Harbour, Birdham Pool & Chichester Marina, Chichester Harbour (West), Chichester Harbour (East)

Y30 Isle of Wight

1: 100 000 WGS 84

Y31 Christchurch to the Solent

1: 60 000 WGS 84

Plans Lymington River, Christchurch

Y32 Eastern Approaches to the Solent

1: 60 000 WGS 84

Y33 Langstone and Chichester Harbours

1: 21 500 WGS 84

Plans Southsea Marina, Northney Marina, Emsworth Yacht Harbour, Birdham Pool and Chichester Marina

Y35 Portsmouth Harbour & Approaches

1: various WGS 84

Plans Portsmouth Harbour & Approaches, Portsmouth Harbour - Northern Part

Y36 Central Solent

1: 35 000 WGS 84

Y37 Southampton Water

1: 35 000 WGS 84

Plans Continuation of Southampton Water

Y38 West Solent

1: 35 000 WGS 84

Plans Yarmouth Harbour

Y39 Poole Harbour

1: various WGS 84

Plans Plans Salterns Marina, Poole Harbour continuation of Holes Bay, Poole Harbour (East), Poole Harbour (West)

Y40 River Exe

1: 21 500 WGS 84

Plans Exmouth Dock, River Exe continuation to Exeter

Y41 Teignmouth and Tor Bay

1: 50 000 WGS 84

Plans Teignmouth Harbour, Torquay Harbour, Paignton Harbour, Brixham Harbour

Y42 Exmouth to Salcombe

1: 100 000 WGS 84

Y43 River Dart

1: 15 000 WGS 84

Plans Kingswear, Continuation to Totnes

Y44 Salcombe Harbour

1: 15 000 WGS 84

Plans Salcombe

Y45 Plymouth Harbour

1: 20 000 WGS 84

Plans Mayflower Marina, King Point & Millbay Marinas, Sutton Harbour and Queen Anne's Battery Marina, Plymouth Yacht Haven, Continuation of River Yealm, Plymouth Harbour, Plymouth to Saltash and Saint Germans

Y46 River Fowey

1: 9000 WGS 84

Plans Continuation to Lostwithiel

Y47 Falmouth Harbour

1: 20 000 WGS 84

Plans Mylor Yacht Harbour, Falmouth Marina, Falmouth Inner Harbour

Y48 Helford River

1: 17 000 WGS 84

Plans Continuation of Helford River to Gweek

Y49 Isles of Scilly

1: 40 000 WGS 84

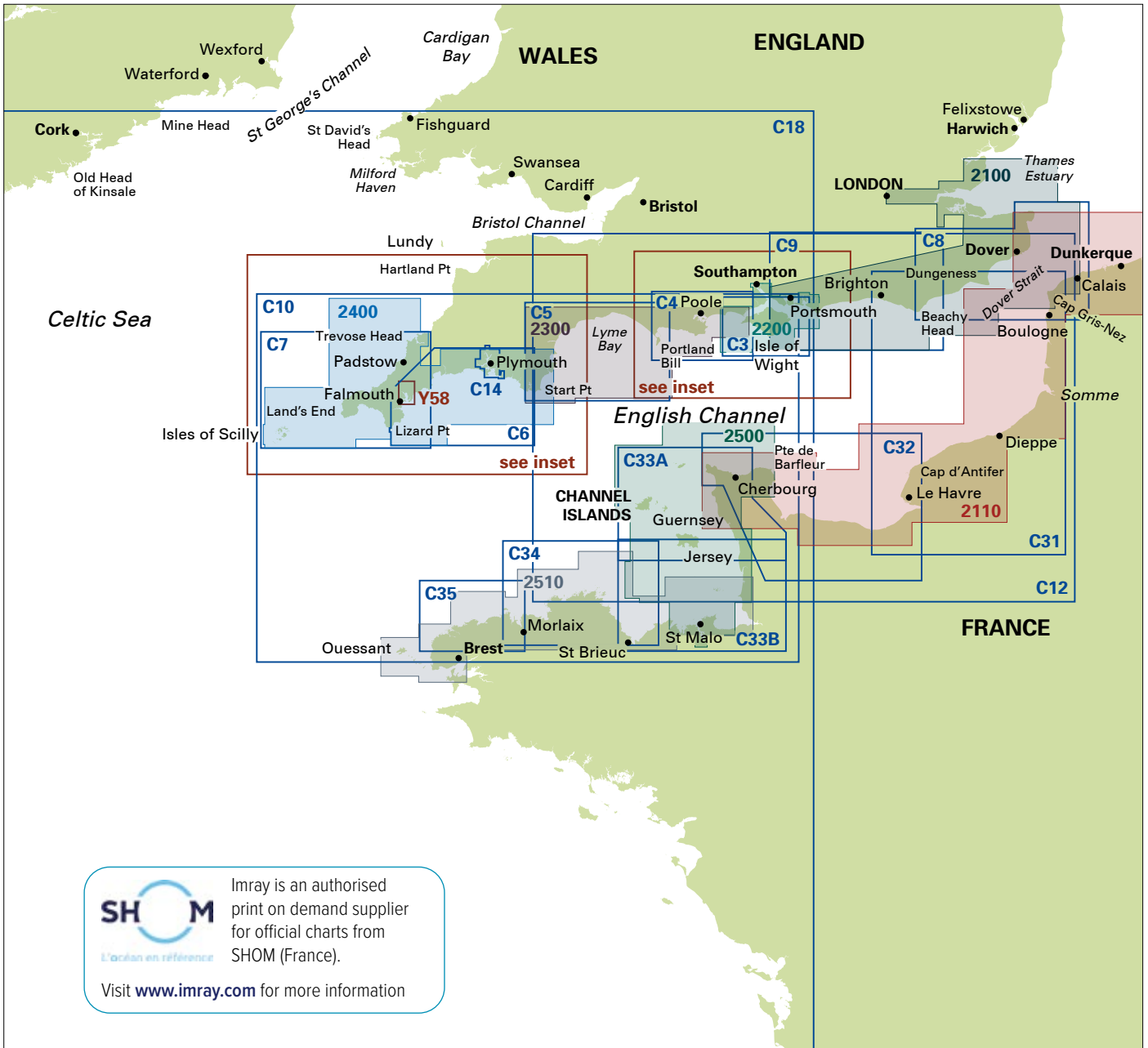
Plans St Mary's Road

Y50 Saint Mary's, Tresco and Surrounding Islands

1: 20 000 WGS 84

Y58 River Fal - Falmouth to Truro

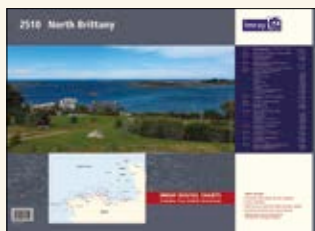
1: 20 000 WGS 84 *Plans* Mylor Yacht Harbour, Falmouth Marina, Falmouth Inner Harbour




 Imray is an authorised print on demand supplier for official charts from SHOM (France).
 Visit www.imray.com for more information

Chart packs

- 2100 Kent and Sussex coasts**
Thames Estuary to the Solent
- 2200 The Solent**
- 2300 Devon and Dorset coasts**
The Needles to Start Point including Poole Harbour
- 2400 The West Country**
River Dart to the Isles of Scilly and Padstow
- 2110 North France**
Hauts de France and Normandy including cross-Channel passage planning chart
- 2500 The Channel Islands and adjacent coast of France**
including cross-Channel passage planning chart
- 2510 North Brittany**



Digital charts



ID 20
English Channel

FR3 North France (SHOM)



Imray Digital Charts for Raymarine
ID1 Britain, Ireland and northern Europe

West Coast & Ireland

The challenges of big, fast tides are rewarded with a wilder, greener, less travelled coastline offering idyllic anchorages and historic harbours

NEW



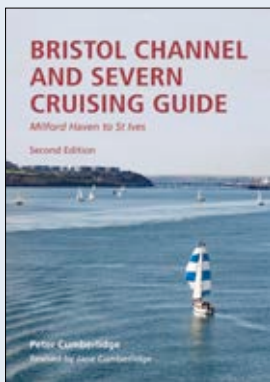
IRISH SEA PILOT

David Rainsbury

The Irish Sea is a vast, almost enclosed sea. With coastlines offering both challenges and serenity, it's a place where strong tides above five knots coexist with tranquil, sheltered waters. This comprehensive guide addresses on both sides of the Irish Sea, from Milford Haven to Portpatrick and Rathlin Island to Carnsore Point.

Updated for its third edition by author and RYA Yachtmaster Instructor David Rainsbury, each chapter commences with practical guidance addressing challenging passages and tidal gateways. Harbour descriptions are structured to prioritise essential details about accessibility, tides, and shelter before delving into detailed pilotage notes, all complemented by Imray plans. The new *Irish Sea Pilot* also incorporates captivating drone shots, celebrating the wonders of this cruising ground.

A4. Soft cover Full colour.
978 178679 357 7 3rd ed. 2024



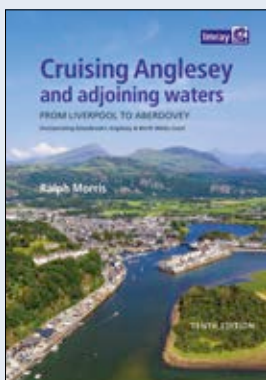
BRISTOL CHANNEL AND SEVERN CRUISING GUIDE

Milford Haven to St Ives

Peter Cumberlandidge

Revised by Jane Cumberlandidge

250mm x 210mm. 208 pp. Soft cover.
Full colour.
978 178679 375 1 2nd ed. 2022

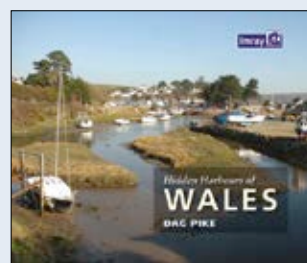


CRUISING ANGLESEY AND ADJOINING WATERS

Ralph Morris

A4. 240 pp. Spiral bound. Full colour.

978 178679 182 5 10th ed. 2021



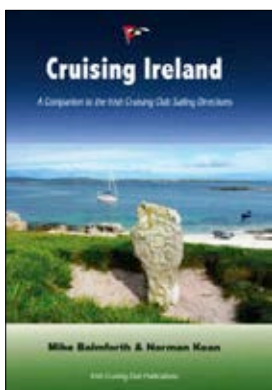
HIDDEN HARBOURS OF WALES

Dag Pike

250mm x 210mm. 64 pp. Soft cover.
Full colour.

978 184623 373 9 1st ed 2011

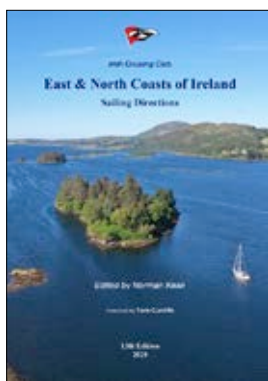
Irish Cruising Club Publications



CRUISING IRELAND

Mike Balmforth & Norman Kean

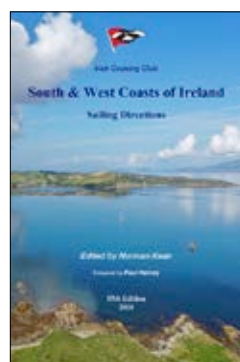
A4. Hard Cover. Full Colour.
978 95581 993 3 1st ed. 2012



EAST & NORTH COASTS OF IRELAND SAILING DIRECTIONS

Edited by Norman Kean

A4 224 pp Soft cover. Full colour.
978 0955819995 14th ed. 2020




SOUTH & WEST COASTS OF IRELAND SAILING DIRECTIONS

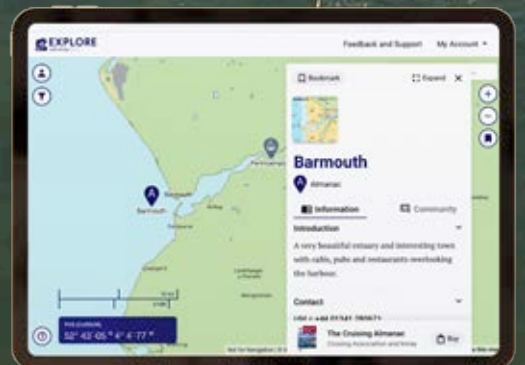
Edited by Norman Kean

A4 Soft cover. Full colour.
978 0955819988 16th ed. 2020



 **PODCASTS**
Explore more with Imray

Jane Cumberlidge talks about the Bristol Channel and River Severn



www.explorewithimray.com
to discover more

West Coast & Ireland charts

C18 Western Approaches to the English Channel & Bay of Biscay Passage Chart
1: 1 000 000 WGS 84

C51 Cardigan Bay - Milford Haven to Tremadog Bay
1: 145 000 WGS 84

Plans Pwllheli, Aberdovey, Aberystwyth, Aberaeron, New Quay, Aberporth, Cardigan, Newport Bay, Fishguard, Entrance to Milford Haven

C52 Cardigan Bay to Liverpool
1: 145 000 WGS 84

Plans Conwy, Conwy Bay, Holyhead, The Swellies, Port Dinorwic, Caernarfon, Menai Strait, Porth Dinlläen, Abersoch, Pwllheli, Porthmadog, Mochras Lagoon, Barmouth

C53 Donegal Bay to Rathlin Island
1: 200 000 WGS 84

Plans Ballycastle, Portrush, Lough Swilly, Mulroy Bay, Sheep Haven, Gweedore Harbour and Approaches, Sound of Aran and Burtonport, Church Pool, Teelin Harbour, Killybegs Harbour, Mullaghmore Bay

C54 Galway Bay to Donegal Bay
1: 200 000 WGS 84

Plans Sligo Harbour, Broad Haven Bay, Portnafrankagh (Frenchport), Achill Sound, Approaches to Westport, Bofin Harbour (Inishbofin), Cleggan Bay, Clifden Bay, Approaches to Roundstone

C55 Dingle Bay to Galway Bay
1: 200 000 WGS 84

Plans Cashla Bay, Galway Bay, Galway Harbour, Kilronan (Aran Is.), River Shannon to Limerick, Kilrush, Foynes Harbour, Fenit Island, Dingle Harbour

C56 Cork Harbour to Dingle Bay
1: 170 000 WGS 84

Plans Dingle Harbour, Valentia Harbour, Portmagee, Sneem, Kilmakillige & Ardgroom Harbours, Castletownbere, Glengarriff Harbour, Bantry Harbour, Crookhaven, Schull Harbour, Baltimore Harbour, Castlehaven, Glandore Harbour, Courtmacsherry Harbour, Kinsale Harbour, Cork Harbour Entrance

C57 Tuskar Rock to Old Head of Kinsale
1: 170 000 WGS 84

Plans Kinsale Harbour, Cork Lower Harbour, Crosshaven, Youghal Harbour, Dungarvan Harbour, Waterford Harbour, Dunmore East Harbour, Kilmore, Cork continuation to East Ferry Marina

C58 Trevoise Head to Bull Point
1: 130 000 WGS 84

Plans Ilfracombe, Barnstaple and Bideford, Continuation to Barnstaple, Lundy, Bude Haven, Port Isaac and Port Gaverne, River Camel, Padstow Harbour

C59 Bristol Channel - Worms Head and Bull Point to Sharpness
1: 115 000 WGS 84

Plans The Mumbles, Swansea Marina, Porthcawl, Cardiff Bay, Penarth Marina, Avonmouth, Continuation of River Avon (Avonmouth Bridge to Bristol), Bridgwater Bay and Burnham-on-Sea, Watchet, Minehead, Continuation Severn Bridge to Sharpness

C60 Gower Peninsula to Cardigan
1: 130 000 WGS 84

Plans Fishguard, Ramsey Sound, Solva Harbour & Approaches, Jack Sound, Milford Haven, Tenby & Caldey Island

C61 St George's Channel - Anglesey to Dublin, Waterford & The Smalls
1: 280 000 WGS 84

Plans Cardigan, New Quay, Aberystwyth, Aberdovey, Barmouth, Porthmadog, Tremadog Bay, Menai Strait, Menai Strait - The Swellies, Conwy, Dun Laoghaire, Dublin Bay, Wicklow, Arklow, Wexford

C62 Irish Sea

1: 280 000 WGS 84
Plans Carrickfergus, Bangor Bay, Entrance to Strangford Lough, Portaferry Marina, Strangford, Ardglass, Entrance to Carlingford Lough, Malahide Inlet, Howth, Dun Laoghaire Harbour, Ribble Estuary, Approaches to Fleetwood, River Lune, Continuation to Carlingford Marina, Continuation to Preston

C64 Belfast Lough to Lough Foyle and Crinan
1: 160 000 WGS 84

Plans Loch Sween (Tayvallich), Continuation of West Loch Tarbert, Port Ellen, Lough Foyle, Portrush, Larne, Belfast Lough, Carrickfergus, Bangor Bay, Continuation of River Foyle to Londonderry

C80 British Isles
1: 1 500 000 WGS 84

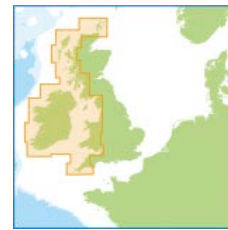
Y26 Milford Haven and River Cleddau
1: various WGS 84

Plans Milford Marina, Neyland Yacht Haven, Milford Haven - St Ann's Head to Neyland Point, River Cleddau above Neyland Point, Continuation to Haverfordwest

Y70 Isle of Man
1: 85 000 WGS 84

Plans Peel, Port Erin, Calf Sound, Bay Ny Carrickey & Castletown Bay, Douglas, Ramsey

Digital charts



Imray Navigator ID30
West Britain & Ireland



Imray Digital Charts for Raymarine
ID1 Britain, Ireland and Northern Europe



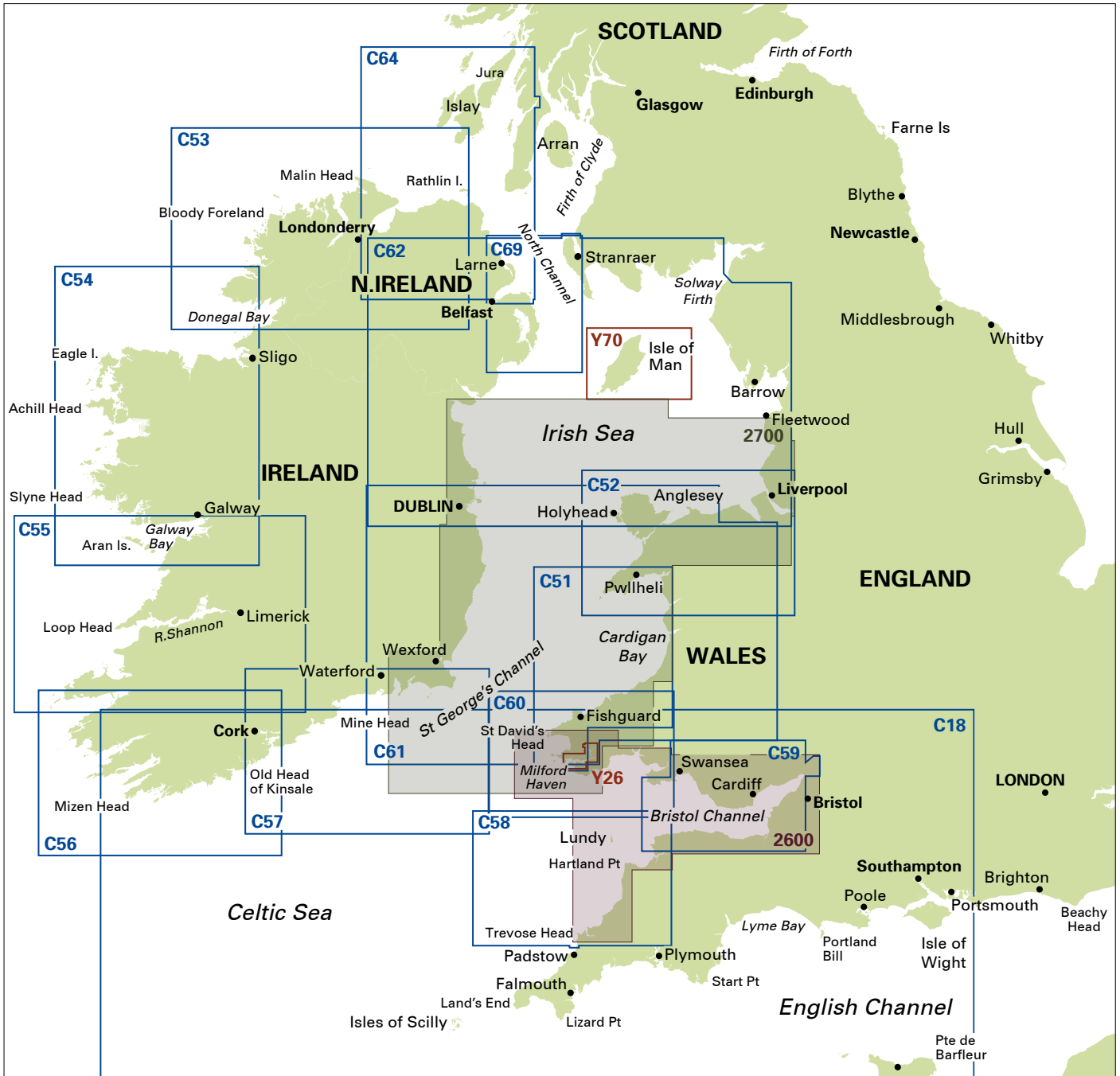


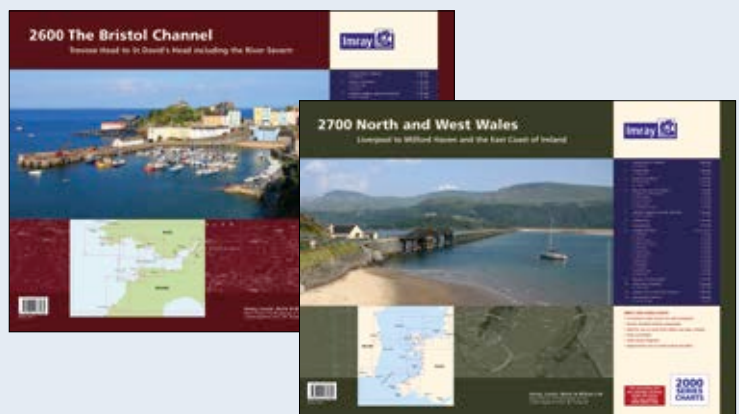
Chart packs

2600 The Bristol Channel

Trevoze Head to St David's Head including The River Severn

2700 North and West Wales

Anglesey to Milford Haven and St George's Channel including Irish Sea passage charts



Scotland

A majestic and extensive cruising ground of firths, sea lochs and islands which benefits from the long days of the northern summer to explore them to the full



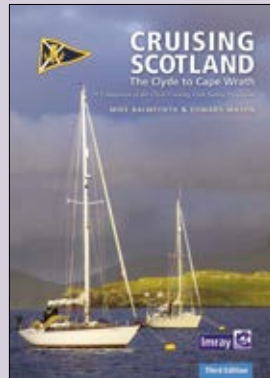
Clyde Cruising Club Sailing Directions and Anchorages

NEW



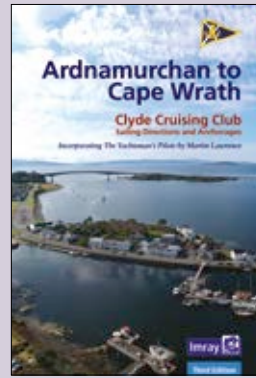
OUTER HEBRIDES

Incorporating
The Yachtsman's Pilot
by Martin Lawrence
A4. Soft cover/spiral binding.
Full colour 978 178679 168 9
3rd ed. 2024



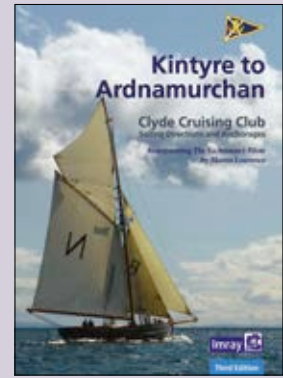
CRUISING SCOTLAND

The Clyde to Cape Wrath
Mike Balmforth & Edward Mason
A4. Hard cover. Full colour
978 178679 449 9 3rd ed. 2023



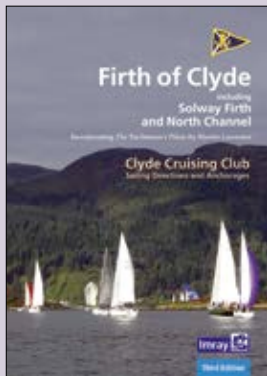
ARDNAMURCHAN TO CAPE WRATH

Incorporating
The Yachtsman's Pilot
by Martin Lawrence
A4. 168pp. Soft cover/spiral binding.
Full colour.
978 178679 323 2 3rd ed. 2022



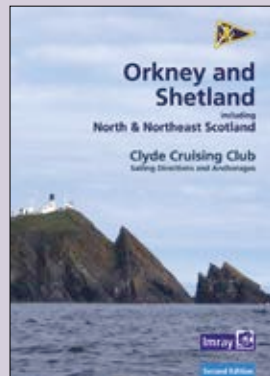
KINTYRE TO ARDNAMURCHAN

Incorporating
The Yachtsman's Pilot
by Martin Lawrence
A4. 216pp. Soft cover/spiral binding.
Full colour
978 178679 166 5 3rd ed. 2020



FIRTH OF CLYDE

Including Solway Firth and
North Channel
Incorporating
The Yachtsman's Pilot
by Martin Lawrence
A4. 150pp. Soft cover/spiral binding.
Full colour
978 178679 164 1 3rd ed. 2020



ORKNEY AND SHETLAND

including North & Northeast
Scotland
A4. 150pp. Soft cover/spiral binding.
Full colour
978 178679 161 0 2nd ed. 2020



SHETLAND ISLANDS PILOT

Gordon Buchanan
A4. 112 pp. Soft cover. Full colour.
978 0 85288 977 0 1st ed. 2009



PDF

IMRAY POCKET PILOT WEST COAST OF SCOTLAND (PDF BOOK)

Norman Kean
(Clyde Cruising Club)



HIDDEN HARBOURS OF SOUTHWEST SCOTLAND

Dag Pike
250mm x 210mm. 80 pp. Soft cover.
Full colour
978 184623 702 7 1st ed 2015

IMRAY PODCASTS
Explore more with Imray

Sailing the Firth of Clyde with Geoff Crowley



EAST COAST OF SCOTLAND

Sailing Directions
River Tweed to Duncansby Head
Incorporating *The Yachtsman's Pilot* by Martin Lawrence
Andy Carnduff / Forth Yacht Clubs Association

NEW

Popular as a landfall destination for yachts sailing across the North Sea from the approaches to the Baltic, the east coast of Scotland is well worth exploring as part of any circumnavigation of Great Britain.

This new Imray title benefits from the extensive local knowledge of Andy Carnduff and the members of the Forth Yacht Clubs Association, and incorporates Martin Lawrence's earlier work. Sailing directions and pilotage details are accompanied by listings of harbours and anchorages, including facilities. The book is illustrated throughout with Imray cartography and a good selection of informative photographs, including aerial shots.

A4. Soft cover. Spiral binding.
Full colour.

978 178979 170 2 1st ed. 2023



www.explorewithimray.com
to discover more

Scotland charts

C23 Fife Ness to Duncansby Head

1: 250 000 WGS 84

Plans Wick Bay, Helmsdale, Inverness Firth, Nairn, Burghead, Hopeman, Lossiemouth, Buckie, Banff & Macduff, Fraserburgh, Peterhead, Aberdeen, Stonehaven, Montrose, Arbroath, Inverness

C24 Flamborough Head to Fife Ness

1: 250 000 WGS 84

Plans Eyemouth Harbour, Berwick Harbour, Holy Island Hbr, Farne Islands, Warkworth Harbour (Amble) & Approaches, Blyth Harbour, River Tyne, Continuation of the River Tyne, River Tyne - Further continuation to Newcastle, Sunderland Harbour, Seaham Harbour, Hartlepool, River Tees, Whitby

C27 Firth of Forth

1: 75 000 WGS 84

Plans St Andrews, Crail, Anstruther, St Monans, Elie, Methil Docks, Pettycur & Kinghorn, Inchkeith, Burntisland, Aberdour, Inchcolm, Dalgety Bay, Inverkeithing, North Queensferry & Port Edgar, Charlestown & Limekilns, Grangemouth & Entrance to River Carron, Continuation to Forth & Clyde Canal Entrance, Granton, Fisherrow, North Berwick, Dunbar

C63 Firth of Clyde

1: 160 000 WGS 84

Plans Crinan Approaches, Ardrishaig, East Loch Tarbert, Campbeltown Loch, Campbeltown Harbour, Caladh Harbour, Burnt Islands, Rothesay Harbour, Lamash Harbour, Rhu & Helensburgh, Dumbarton, Kip Marina, Largs Channel, Largs Yacht Haven, Millport, Ardrossan, Irvine, Troon, Ayr, Girvan, Stranraer, Portpatrick

C64 Belfast Lough to Lough Foyle and Crinan

1: 160 000 WGS 84

Plans Loch Sween (Tayvallich), Continuation of West Loch Tarbert, Port Ellen, Lough Foyle, Portrush, Larne, Belfast Lough, Carrickfergus, Bangor Bay, Continuation of River Foyle to Londonderry

C65 Crinan to Mallaig and Barra

1: 160 000 WGS 84

Plans Castle Bay (Barra), Mallaig, Tobermory (Mull), Caledonian Canal Entrance, Lynn of Lorn, Dunstaffnage Bay, Oban, Loch Feochan Entrance, Sound of Luig

C66 Mallaig to Rubha Reidh and Outer Hebrides

1: 155 000 WGS 84

Plans Loch Gairloch, Kyleakin, Portree, Uig, Dunvegan, Loch Boisdale (South Uist), Loch Carnan, Loch Maddy, East Loch Tarbert, St Kilda

C67 North Minch and Isle of Lewis

1: 155 000 WGS 84

Plans Loch Inchar (Kinlochbervie), Loch Inver, Ullapool, Stornoway Harbour, Loch Carloway

C68 Cape Wrath to Wick and the Orkney Islands

1: 160 000 WGS 84

Plans Pierowall Harbour, Whitehall Harbour, Bay of Kirkwall, Stromness Harbour, Scrabster Harbour, Wick Bay

C69 Loch Ryan to Belfast Lough and Strangford Lough

1: 90 000 WGS 84

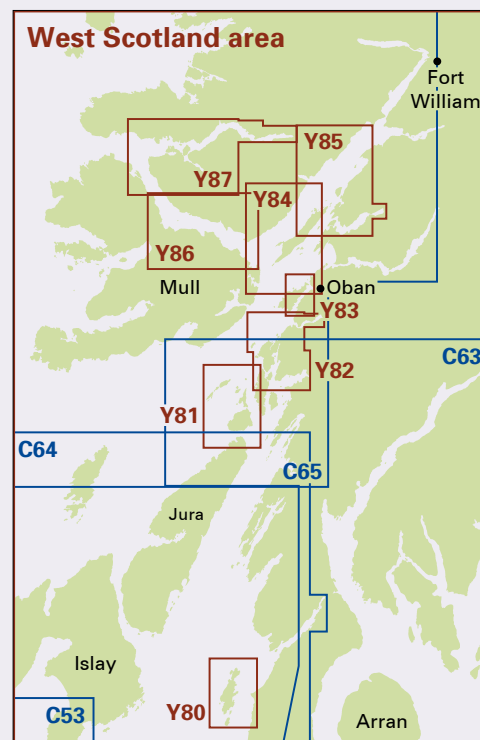
Plans Carnlough Harbour, Larne, Carrickfergus, Bangor Bay, Donaghadee Sound, Entrance to Strangford Lough, Portaferry Marina, Strangford, Ardglass, Stranraer, Portpatrick

C70 Southern North Sea Passage Chart

1: 900 000 WGS 84

C80 British Isles

1: 1 500 000 WGS 84



Y charts for Scotland

Small format A2-sized single sheet charts are now available for popular areas in Scotland

Y80 Sound of Gigha

1: 25 000 WGS 84

Y81 Corryvreckan, Sound of Luig & Garvellachs

1: 30 000 WGS 84

Y82 Loch Melfort to Loch Feochan

1: various WGS 84

Plans Loch Feochan, Cuan Sound & Loch Melfort, Insh Island to Loch Feochan

Y83 Sound of Kerrera & Approaches to Oban

1: 15 000 WGS 84

Y84 Firth of Lorn & Lismore

1: 40 000 WGS 84

Y85 South Loch Linnhe & Loch Creran

1: 40 000 WGS 84

Plans Loch Creran Continuation

Y86 Sound of Mull

1: 40 000 WGS 84

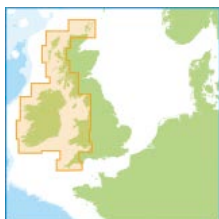
Plans Loch Aline

Y87 West Sound of Mull & Loch Sunart

1: 40 000 WGS 84

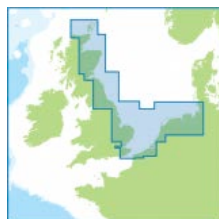
Plans Tobermory, Continuation of Loch Sunart

Digital charts



ID30

West Britain & Ireland



ID10

North Sea

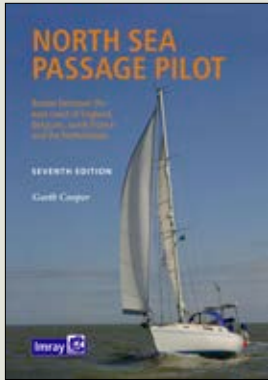


Imray Digital Charts for Raymarine ID1

Britain, Ireland & Northern Europe

North Sea, Baltic & Norway

Rich cruising grounds on the UK east coast to the Netherlands, Germany, Scandinavia and beyond with a smörgåsbord of historic ports of call, tucked-away anchorages and snug, welcoming harbours

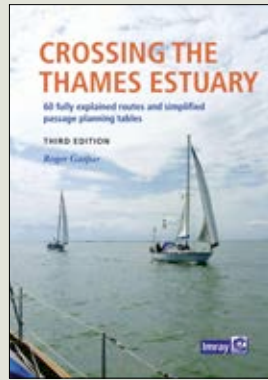


NORTH SEA PASSAGE PILOT

The East Coast, Belgium and the Netherlands and passages between

Garth Cooper

A4. 232 pp. Soft cover. Full colour.
978 178679 066 8 7th ed. 2022



CROSSING THE THAMES ESTUARY

Roger Gaspar

A4. 268 pp. Full colour. Spiral bound
978 178679 319 5 3rd ed. 2022

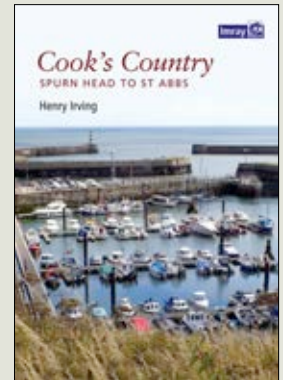


NORFOLK, THE WASH AND HUMBER

Lowestoft to Spurn Head

Peter Harvey

A4. 72 pp. Soft cover. Full colour.
978 178679 147 4 1st ed. 2022

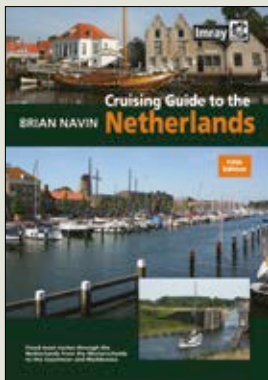


COOK'S COUNTRY

Spurn Head to St Abbs

Henry Irving

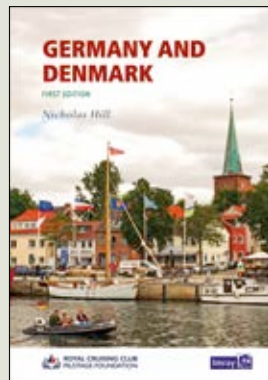
A4 76 pp. Soft cover.
978 085288 749 2 1st ed. 2016



CRUISING GUIDE TO THE NETHERLANDS

Brian Navin

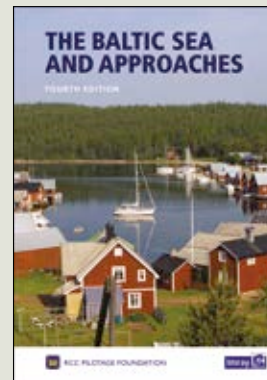
A4. 180 pp. Soft cover. Full colour.
978 184623 185 8 5th ed. 2010



GERMANY AND DENMARK

Royal Cruising Club Pilotage Foundation / Nicholas Hill

A4. 272 pp. Soft cover. Full colour.
978 178679 006 4 1st ed. 2022

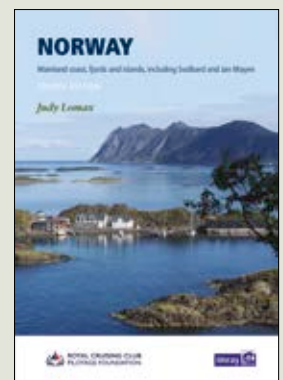


THE BALTIC SEA AND APPROACHES

Denmark, Germany, Sweden, Finland, Poland, the Baltic States and Russia

Royal Cruising Club Pilotage Foundation

A4. 376 pp. Hard cover. Full colour.
978 184623 666 7 4th ed. 2017

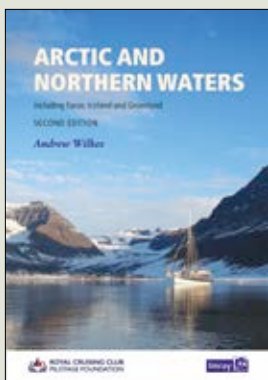


NORWAY

Oslo to Cape North and Svalbard

Judy Lomax / Royal Cruising Club Pilotage Foundation

A4. Hard cover. Full colour. 978 178679 186 3. 4th ed. 2022.




ARCTIC AND NORTHERN WATERS

including Faroe, Iceland, Greenland

Royal Cruising Club Pilotage Foundation / Andrew Wilkes

A4. 420pp. Hard cover. Full colour.
978 184623 931 1 2nd ed. 2020

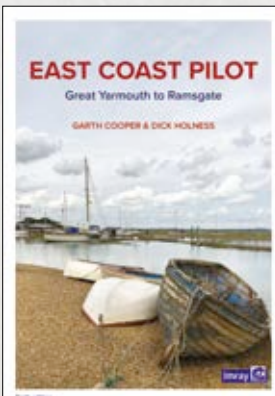
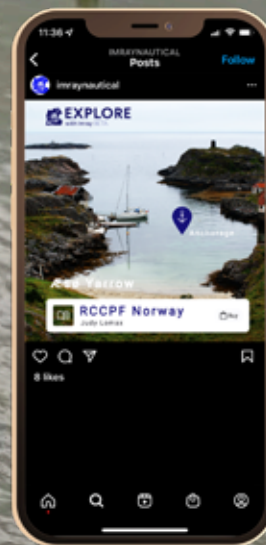


PODCASTS
Explore more with
Imray

East Coast Pilot
with Garth Cooper and
Dick Holness



www.explorewithimray.com
to discover more



EAST COAST PILOT

Great Yarmouth to Ramsgate
Garth Cooper and Dick Holness



East Coast Pilot stands as an indispensable guide for sailors navigating the waters between Great Yarmouth and Ramsgate. Both authors, deeply rooted in their affection for the East Coast, learn something new with each voyage and this enhances the rich reservoir of knowledge they've joyously shared over the years.

Designed for simplicity and quick referencing, each estuary, river, and port is devoted its own chapter. Pivotal details guide you safely into your chosen spot while highlighted box panels share essential waypoints, port contact information, and vital facilities any crew might need. Coupled with Imray plans, the authors have incorporated useful sea-level and drone imagery to paint a complete picture of your cruising terrain.

A4. Soft cover. Full colour.
978 178679 451 2 6th ed. 2024

North Sea, Baltic & Norway charts

C1 Thames Estuary - Tilbury to North Foreland and Orfordness

1: 120 000 WGS 84

C2 The River Thames - Teddington to Southend

1: various WGS 84

Plans Gallions Point Marina, South Dock Marina, Limehouse Basin Marina, St Katharine Docks, Chelsea Harbour Marina, Brentford Dock Marina, Richmond Bridge to Vauxhall Bridge, Vauxhall Bridge to Barking Creek, Barking Creek to Southend, Continuation to Teddington

C8 Dover Strait - North Foreland to Beachy Head and Boulogne

1: 120 000 WGS 84

Plans Sovereign Harbour, Rye Harbour, Folkestone Harbour, Dover, River Stour Entrance, Ramsgate, Calais, Boulogne-sur-Mer

C23 Fife Ness to Duncansby Head

1: 250 000 WGS 84

Plans Wick Bay, Helmsdale, Inverness Firth, Nairn, Burghead, Hopeman, Lossiemouth, Buckie, Banff & Macduff, Fraserburgh, Peterhead, Aberdeen, Stonehaven, Montrose, Arbroath, Inverness

C24 Flamborough Head to Fife Ness

1: 250 000 WGS 84

Plans Eyemouth Harbour, Berwick Harbour, Holy Island Hbr, Farne Islands, Warkworth Harbour (Amble) & Approaches, Blyth Harbour, River Tyne, Continuation of the River Tyne, River Tyne - Further continuation to Newcastle, Sunderland Harbour, Seaham Harbour, Hartlepool, River Tees, Whitby

C25 Harwich to River Humber and Holland Passage Chart

1: 340 000 WGS 84

Plans Oudeschild, Den Helder, IJmuiden, Scheveningen

C26 IJmuiden to Die Elbe - Passage Chart

1: 345 000 WGS 84

Plans IJmuiden, Den Helder, West-Terschelling, Lauwersoog, Borkum Yacht Harbour, Norderney Approaches, Helgoland, Cuxhaven, Brunsbüttel

C27 Firth of Forth

1: 75 000 WGS 84

Plans St Andrews, Crail, Anstruther, St Monans, Elie, Methil Docks, Pettycur & Kinghorn, Inchkeith, Burntisland, Aberdour, Inchcolm, Dalgety Bay, Inverkeithing, North Queensferry & Port Edgar, Charlestown & Limekilns, Grangemouth & Entrance to River Carron, Continuation to Forth & Clyde Canal Entrance, Granton, Fisherrow, North Berwick, Dunbar

C28 Harwich to Wells-next-the-Sea

1: 125 000 WGS 84

Plans Wells-next-the-Sea, Blakeney Harbour, Gt Yarmouth Haven, Lowestoft Approaches, Southwold Harbour, Rivers Ore and Alde, River Deben, Lowestoft Harbour

C29 Harwich to Whitby

1: 285 000 WGS 84

Plans Whitby, Scarborough, Filey, Bridlington, River Humber, River Humber - Continuation to Goole, Hull Marina, Grimsby

C30 Harwich to Hoek van Holland and Dover Strait

1: 200 000 WGS 84

Plans Dunkerque, Nieuwpoort, Oostende, Blankenberge, Zeebrugge, Breskens, Vlissingen

C70 Southern North Sea Passage Chart

1: 900 000 WGS 84

C80 British Isles

1: 1 500 000 WGS 84

Chart packs



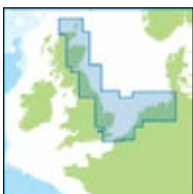
2120 North Sea
Nieuwpoort to Den Helder



2000 Suffolk and Essex Coasts
Lowestoft to River Crouch

Digital Charts

Imray Navigator



ID10 North Sea



NL1 The Netherlands

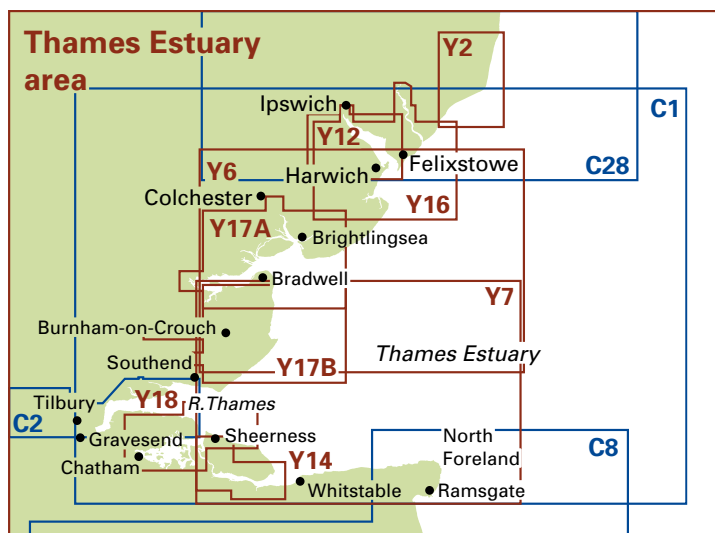
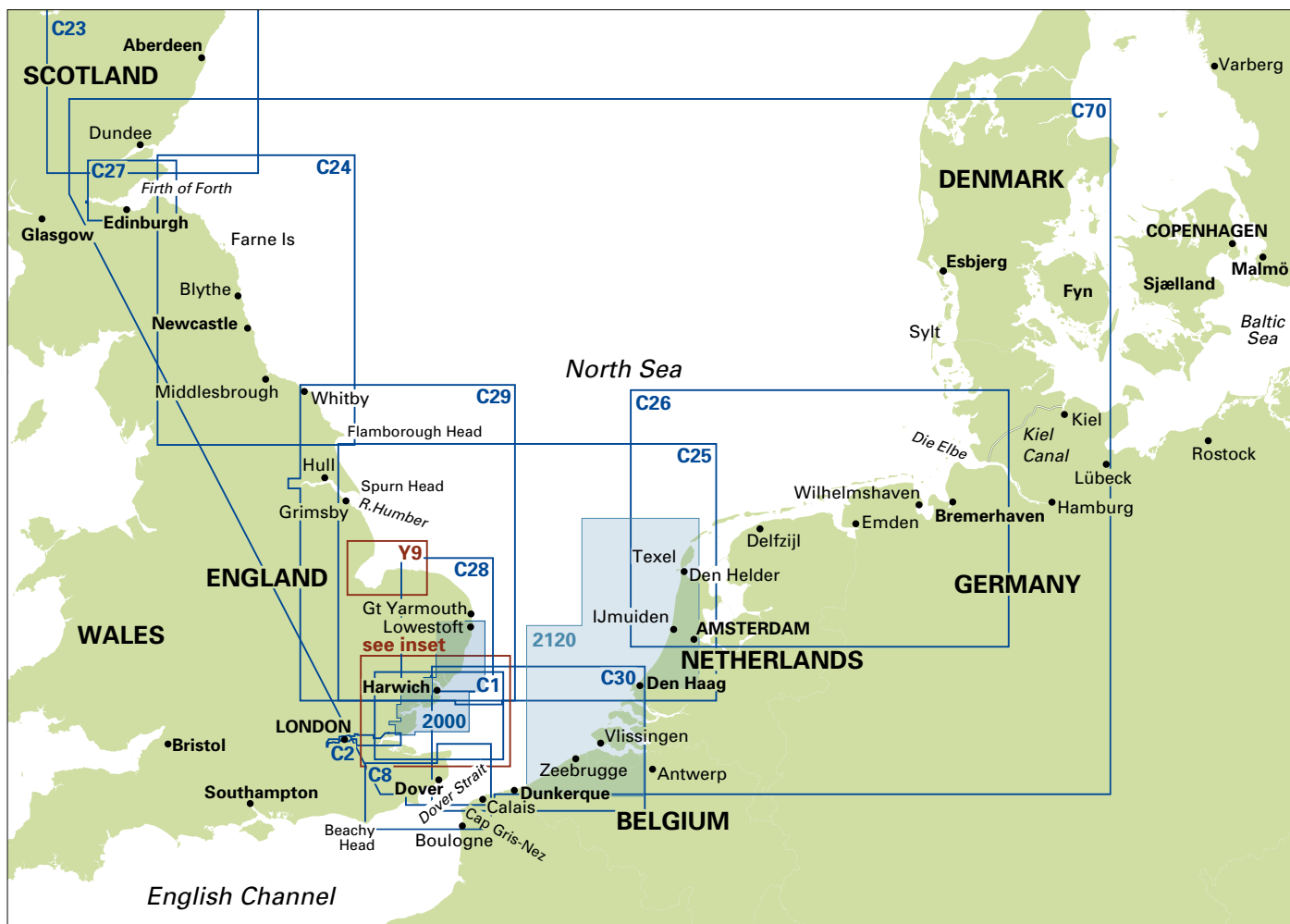


Imray Digital Charts for Raymarine




ID1 Britain, Ireland and Northern Europe

North Sea, Baltic & Norway charts



Norwegian print on demand charts



Imray is an authorised print on demand supplier of official charts from the Norwegian Hydrographic Office. Charts are updated to include corrections on the most recent Notices for Mariners (Efs) and printed on request. We are able to fulfil these orders quickly.

Visit www.imray.com for more information.

Y2 Rivers Ore and Alde
1: 35 000 WGS 84

Y6 Suffolk and Essex Coasts
1: 120 000 WGS 84

Y7 Thames Estuary South
1: 120 000 WGS 84

Y9 The Wash
1: 90 000 WGS 84
Plans Boston, King's Lynn, Brancaster Harbour and Overy Staithe, Wells-nextthe-Sea, Blakeney Harbour, Wisbech Yacht Harbour

Y12 Rivers Stour and Orwell
1: 35 000 WGS 84
Plans Upper Orwell to Ipswich, Fox's Marina, Woolverstone Marina, Suffolk Yacht Harbour, Shotley Marina

Y14 The Swale
1: various WGS 84
Plans Swale Marina, East Swale, West Swale

Y16 Walton Backwaters to Ipswich and Woodbridge
1: 35 000 WGS 84
Plans River Orwell continuation to Ipswich, Fox's Marina, River Deben continuation above Ramsholt, Tide Mill Yacht Harbour, Woolverstone Marina, Suffolk Yacht Harbour, Shotley Marina, Titchmarsh Marina

Y17A The Rivers Colne and Blackwater
1: 35 000 WGS 84
Plans River Colne continuation to Colchester, Wivenhoe, Brightlingsea, Tollesbury Marina, Bradwell Marina, River Blackwater continuation to Maldon

Y17B The Rivers Crouch and Roach
1: 35 000 WGS 84
Plans Burnham Yacht Harbour, River Crouch continuation to Battlesbridge, River Roach continuation to Rochford

Y18 The River Medway & Approaches - Sheerness to Rochester and Entrance to the River Medway
1: 20 000 WGS 84
Plans Whitton Marine, Chatham Marina, Gillingham Marina, River Medway Continuation, Entrance to the River Medway

North Atlantic

Passages and ports south to the sun or following the call of the western horizon to an Atlantic Crossing or circuit via the Atlantic Islands

NEW



SOUTH BISCAY

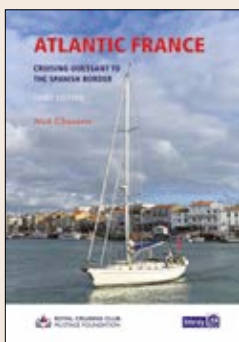
Cruising northwest Spain from the French border to A Coruña
Royal Cruising Club Pilotage Foundation / Steve Pickard

The eighth edition of the Royal Cruising Club Pilotage Foundation's *South Biscay* pilot covers the Spanish coast of the Bay of Biscay coast from Hendaye on the French border to A Coruña in Galicia.

This edition has been completely revised and updated by author Steve Pickard, with comprehensive information on marinas, ports, anchorages and sailing passages accompanied by new photographs and updated Imray chartlets. Introductory sections give a taste of the region both in terms of history, culture and tourism but also provide detailed information on regulations, weather patterns and other topics relevant to yachts.

South Biscay is the complete reference for yachts exploring this long Biscay coast of Spain.

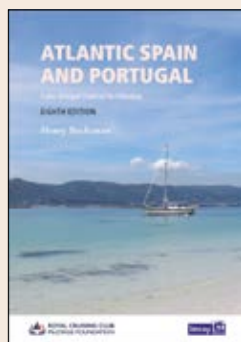
A4. 186pp. Hard cover. Full colour.
978 178679 435 2 8th ed. 2023



ATLANTIC FRANCE

Ouessant to the Spanish border
Royal Cruising Club Pilotage Foundation / Nick Chavasse

A4. 358 pp. Hard cover. Full colour.
978 178679 374 4 3rd ed. 2023

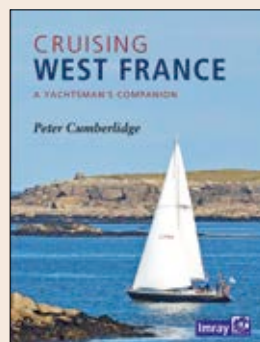


ATLANTIC SPAIN AND PORTUGAL

Cabo Ortegal (Galicia) to Gibraltar

Royal Cruising Club Pilotage Foundation / Henry Buchanan

A4. 360 pp. Hard cover. Full colour.
978 184623 964 9 8th ed. 2019



CRUISING WEST FRANCE

A Yachtsman's Companion

Peter Cumberlidge

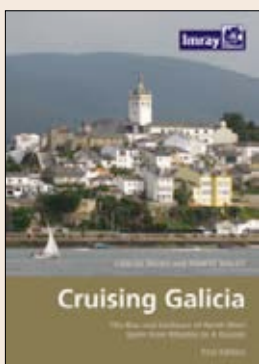
A4. 256 pp. Soft cover. Full colour.
978 184623 901 4 1st ed. 2022



PDF

IMRAY POCKET PILOT THE MORBIHAN, WEST FRANCE

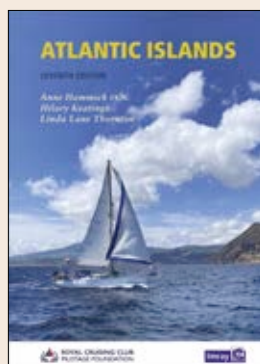
Royal Cruising Club Pilotage Foundation / Nick Chavasse



CRUISING GALICIA

Carlos Rojas and Robert Bailey

A4. 280 pp. Soft cover. Full colour.
978 184623 041 7 1st ed. 2008



ATLANTIC ISLANDS

Bermuda, Azores, Madeira Group, Canary Islands and Cape Verdes

Royal Cruising Club Pilotage Foundation / Anne Hammick, Hilary Keatinge, Linda Lane-Thornton

A4. 452pp. Hard cover. Full colour.
978 178970 070 5 7th edition 2021

NEW



NORTH AFRICA

Morocco, Algeria, Libya and Tunisia including Gibraltar, Pantelleria and the Pelagic Islands and Malta.

Royal Cruising Club Pilotage Foundation / Graham Hutt & Di Stoddard

A4. 328pp. Hard cover. Full colour.
978 178679 185 6 5th edition 2023



 **PODCASTS**
Explore more with Imray

Discover Atlantic France with Nick Chavasse

Linda Lane Thornton on cruising the amazing Atlantic Islands of Bermuda, Azores, Madeira Group, Canary Islands and the Cape Verdes

North Atlantic charts

C18 Western Approaches to the English Channel & Bay of Biscay - Passage Chart
1: 1 000 000 WGS 84

C19 A Coruña to Gibraltar - Passage Chart
1: 825 000 WGS 84
Plans A Coruña, Baiona, Leixões, Lisboa Approaches, Cascais, Sines, Lagos, Bahía de Cádiz, Rota, Strait of Gibraltar, Gibraltar

C20 Strait of Gibraltar to Archipélago dos Açores & Islas Canarias - Passage Chart
1: 2 500 000 WGS 84
Plans Oostende, Blankenberge, Zeebrugge, Breskens, Vlissingen

C36 Île d'Ouessant to Raz de Sein
1: 80 000 WGS 84
Plans Baie de Lampaul (Ouessant), Port du Conquet, Port de Brest & Marina du Moulin Blanc, Marina du Moulin Blanc, L'Elorn - Continuation to Landerneau, Port de Camaret-sur-Mer, Port de Morgat, Port de Douarnenez

C37 Raz de Sein to Bénodet
1: 80 000 WGS 84
Plans Ile de Sein, Audierne, St Guénole, Le Guilvinec, Lesconil, Loctudy, Bénodet, L'Odet Fleuve

C38 Anse de Bénodet to Presqu'île de Quiberon
1: 80 000 WGS 84
Plans Port la Forêt, Concarneau, Port Manec'h, Ports Brigneau & Merrien, Doëlan, Îles de Glénan North, Lorient, Lorient Yacht Harbour, Port Tudy (Île de Groix), Étel

C39 Lorient to Le Croisic
1: 80 000 WGS 84
Plans Sauzon, Le Palais, Port Haliguen, La Trinité-Sur-Mer, Port Du Crouesty, Piriacsur-Mer, La Turballe, Le Croisic, Baie de Pouliguen, Continuation of La Vilaine

C40 Le Croisic to Les Sables d'Olonne
1: 110 000 WGS 84
Plans Le Croisic, Saint-Nazaire, Pornic, L'Herbaudière, Goulet de Fromentine, Port-Joinville (Île d'Yeu), Port de Saint-Gilles-Croix-de-Vie, Les Sables d'Olonne

C41 Les Sables d'Olonne to La Gironde
1: 110 000 WGS 84
Plans Bourgenay, Approach to Jard-sur-Mer, Approach to Ars-en-Ré, Approach to St Martin-de-Ré, Approach to La Flotteen-Ré, Rade de la Pallice, La Rochelle and Port des Minimes, St-Denis-d'Oléron, Douhet, Boyardville, Rochefort, Royan, Port Médoc, La Gironde & La Garonne, Continuation to Bordeaux

C42 La Rochelle to Santander
1: 350 000 WGS 84
Plans Approach to Arcachon, Capbreton, Rada de Higuey, Getaria, Zumaia, Abra de Bilbao, Laredo, Santoña, Santander, La Gironde & La Garonne, Continuation to Bordeaux

C43 Santander to A Coruña
1: 350 000 WGS 84
Plans Santander, Ribadesella, Gijón, Avilés, Luarca, Ribadeo, Ría de Viveiro, Ría de Cedeira, A Coruña to Rías de Ares and Betanzos

C48A Coruña to Porto
1: 350 000 WGS 84
Plans A Coruña, Ría de Corme e Laxe, Ría de Camariñas, Ría de Muros, Approaches to Ría de Arousa, Ría de Arousa, Cabo de Cruz, Vilagarcía, Illa de Arousa to Cambados, Ría de Pontevedra, Ría de Vigo, Baiona, Viana do Castelo, Leixões, Barra do Rio Douro

C49 Ria de Aveiro to Sines
1: 350 000 WGS 84
Plans Figueira da Foz, Nazaré, Porto de Peniche, Cascais, Lisboa Approaches, Lisboa (Lisbon), Sesimbra, Entrance to Rio Sado (Setúbal), Setúbal, Sines

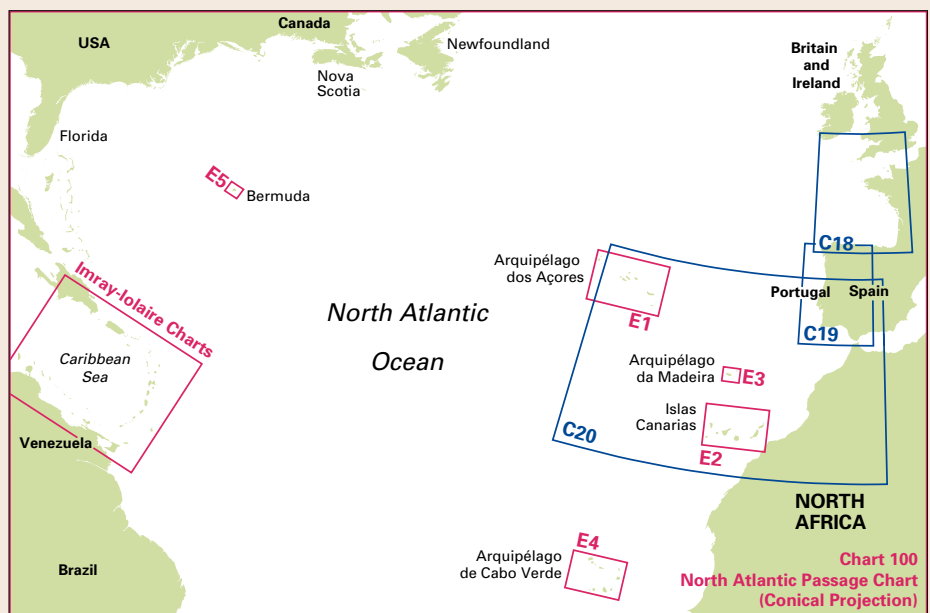
C50 Sines to Gibraltar
1: 350 000 WGS 84
Plans Sines, Lagos, Portimão, Vilamoura, Vila Real de Santo António, Isla Cristina, Mazagón, Chipiona, Rota, Bahía de Cádiz, Puerto Sherry, Sancti-Petri, Barbate, Tarifa, Gibraltar, Strait of Gibraltar



Imray is an authorised print on demand supplier for official charts from SHOM (France).

Visit www.imray.com for more information

Imray Iolaire charts for the Atlantic Ocean



100 North Atlantic Ocean Passage Chart
1: 7 620 000 WGS 84

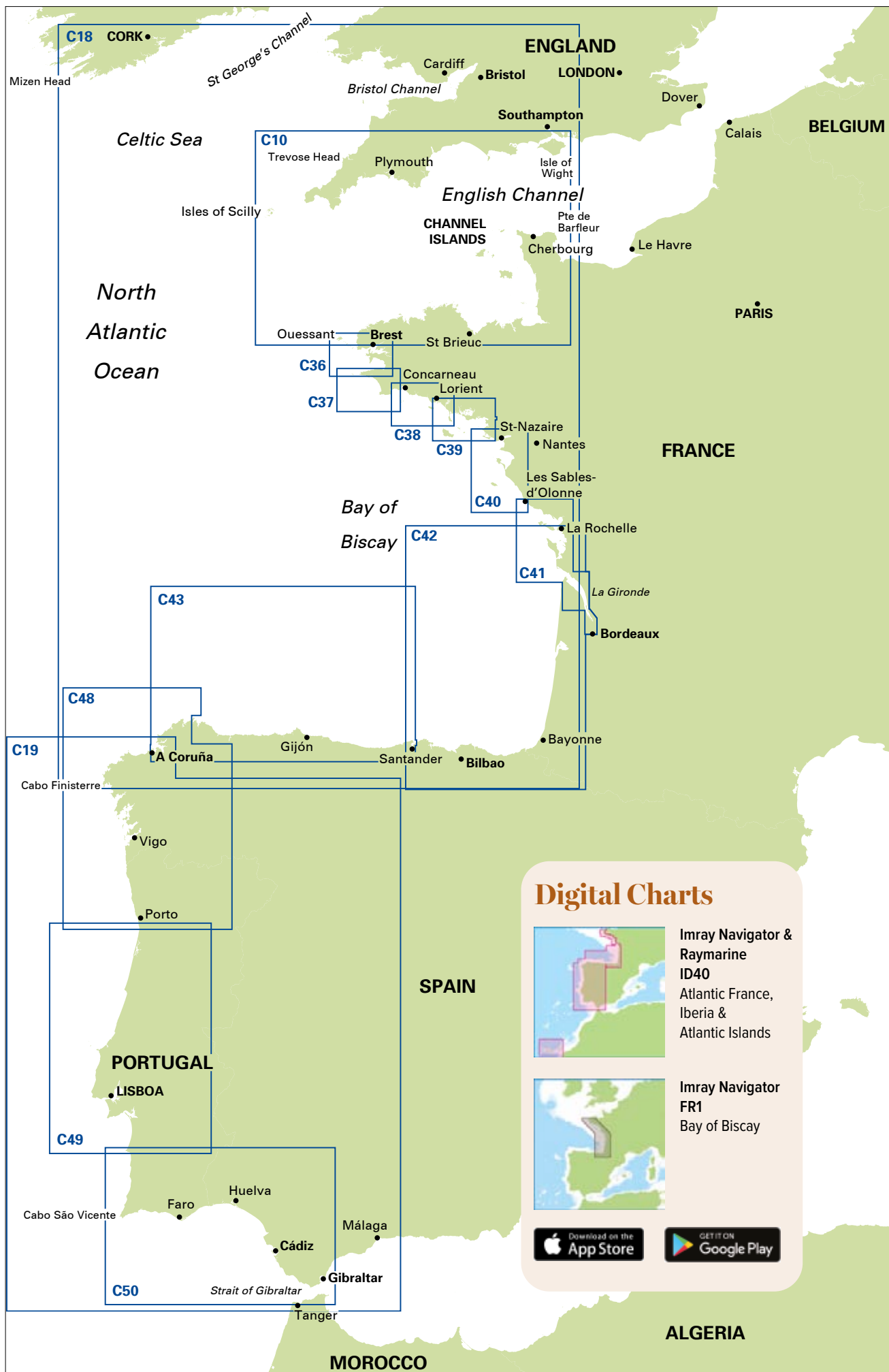
E1 Arquipélago dos Açores
1: 750 000 WGS 84
Plans Lajes das Flores, Horta, Lajes do Pico, Velas, Vila da Praia, Praia da Vitória, Angra do Heroísmo, Ponta Delgada, Vila Franco do Campo, Vila do Porto

E2 Islas Canarias
1: 600 000 WGS 84
Plans Tazacorte, Puerto de Santa Cruz, Puerto de la Estaca, Puerto de San Sebastian de la Gomera, Dársena de Los Llanos (Marina Santa Cruz), Dársena Pesquera (Marina Tenerife), Puerto de las Palmas, Morro Jable, Gran Trajal, Marina Rubicón, Puerto Calero, Puerto de Naos & Los Marmoles (Marina Lanzarote), Estrecho del Río

E3 Arquipélago da Madeira
1: 170 000 WGS 84
Plans Porto Santo, Porto de Recreio da Calheta, Funchal, Água de Pena, Porto de Machico, Quinta do Lorde, Ponta de São Lourenço, Enseada da Doça (Isla Deserta Grande), Selvagem Grande, Selvagem Pequena

E4 Arquipélago de Cabo Verde
1: 500 000 WGS 84
Plans Porto Novo (Ilha de Santo Antão), Mindelo (Porto Grande) (Ilha de São Vicente), Ilha de Santa Luzia, Porto de Tarrafal (Ilha de São Nicolau), Porto da Preguiça (Ilha de São Nicolau), Baía da Palmeira (Ilha do Sal), Porto de Sal-Rei (Ilha da Boavista), Porto da Praia (Ilha de Santiago), Cavaleiros (Ilha do Fogo), Porto da Furna (Ilha Brava)

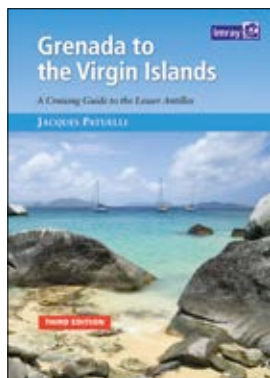
E5 Bermuda
1: 60 000 WGS 84
Plans Saint George's Harbour, Dockyard Marina, Caroline Bay Marina, Hamilton Harbour, Bermuda Approaches



Caribbean

Imray Iolaire A, B, D & E charts for the north Atlantic and Caribbean are widely acknowledged as the best available for the cruising sailor. They combine the latest official survey data with first-hand information gathered over 60 years of research by Don Street Jr and his wide network of contributors. Like all Imray charts, they include many anchorages, facilities and inlets not included on official charts.

A sailor's paradise of trade wind passages from one warm and welcoming island to the next



GRENADA TO THE VIRGIN ISLANDS

A Cruising Guide to the Lesser Antilles

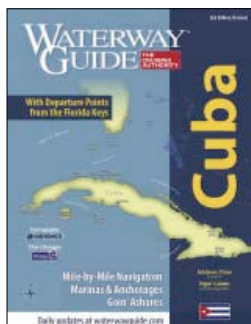
Jaques Patuelli

A4. 300 pp. Soft cover. Fullcolour. 978 184623 581 8 3rd ed. 2015

WATERWAY GUIDE CUBA

Addison Chan

267 x 207mm. 384 pp. Spiral bound. Soft cover. Full colour 978 099858 634 2 2nd ed. 2019



E5 Bermuda

1: 60 000 WGS 84

Plans Saint George's Harbour, Dockyard Marina, Caroline Bay Marina, Hamilton Harbour, Bermuda Approaches

100 North Atlantic Ocean Passage Chart

1: 7 620 000 WGS 84

1 Eastern Caribbean - Passage Chart

1: 1 800 000 WGS 84

A Puerto Rico to Martinique - Passage Chart

1: 1 000 000 WGS 84

A1 Puerto Rico - Passage Chart

1: 285 000 Undetermined Datum

Plans Bahia De Mayaguez, Puerto Arecibo, San Juan, Bahia De Ponce

A11 Bahia de Guanica to Punta Borinquen

1: 116 700 WGS 84

Plans Bahia de Mayaguez, Puerto Real, Bahia de Boqueron, Cabo Rojo to Punta Brea

A12 Punta Figuras to Bahia de Guanica

1: 116 700 WGS 84

Plans Bahia De Guanica, Bahia De Guayanilla, Bahia De Ponce, Ponce, Isla Caja De Muertos, Punta Petrona, Bahia De Jobos, Arroyo

A13 Cabo San Juan to Culebra Island and Punta Figuras

1: 116 700 WGS 84

Plans Palmas Del Mar, Puerto Arroyo and Puerto Patillas, Ensenada Honda, Pasaje Medio Mundo

A131 Isla de Culebra and Isla de Vieques

1: various WGS 84

Plans Isla de Culebra, Isla de Vieques, Esperanza (Isla de Vieques), Ensenada Honda (Isla de Vieques)

A14 San Juan to Isla de Vieques and Isla de Culebra

1: 116 700 WGS 84

Plans Bahia De San Juan, El Conquistador Marina and Las Croabas, Marina Puerto Chico and Villa Marina, Isleta Marina, Cayo Lobos, Isla Palominos, Puerto del Rey Marina

A141 Cabo San Juan to Ensenada Honda and Isla de Vieques

1: 40 000 WGS 84

Plans Puerto del Rey Marina

A2 Puerto Rico to the Virgin and Leeward Islands - Passage Chart

1: 400 000 WGS 84

Plans Sombrero Island

A23 Virgin Islands and St Croix

1: 285 000 WGS 84

Plans Frederiksted (St Croix), Christiansted (St Croix), Green Cay Marina (St Croix), Port Alucroix and Limetree Bay (St Croix), Charlotte Amalie (St Thomas), Road Harbour (Tortola), St Croix

A231 St Thomas to Virgin Gorda

1: 90 000 WGS 84

Plans Charlotte Amalie (St Thomas), Cruz Bay (St John), Road Harbour, Sea Cow Bay & Nanny Cay Marina (Tortola), Benner Bay (St Thomas), Great Camanoe to Scrub Island

A232 Tortola to Anegada

1: 90 000 WGS 84

Plans Road Harbour & Approaches (Tortola), Virgin Gorda Yacht Harbour (Virgin Gorda), South Sound (Virgin Gorda), Gorda Sound (Virgin Gorda), Great Camanoe to Scrub Island, Fat Hogs Bay & Maya Cove (Tortola)

A233 Virgin Islands

1: 90 000 WGS 84

Charts A231 and A232 combined

A234 Northeast Coast of St Croix

1: 27 700 WGS 84

Plans Salt River Bay, Christiansted Harbour, Green Cay Marina

A3 Anguilla to Dominica - Passage Chart

1: 400 000 WGS 84

A4 Guadeloupe to St Lucia - Passage Chart

1: 400 000 WGS 84

A24 Anguilla, St Martin and St Barthélemy

1: 100 000 WGS 84

Plans Prickly Pear Cays, Shoal Bay & Island Harbour (Anguilla), Crocus Bay (Anguilla), Road Bay (Anguilla), Simpson Bay Lagoon and Baie de Marigot (Saint Martin), Great Bay (Sint Maarten), Oyster Pond (Sint Maarten), Port de Gustavia (Saint Barthélemy), Anse de Grand Fond (Saint Barthélemy)

A25 St Christopher, St Eustatius, Nevis, Monserrat and Saba

1: 100 000 WGS 84

Plans Fort Baai (Saba), Oranje Baai (St Eustatius), Basseterre Bay (St Christopher), The Narrows, Charlestown (Nevis), Saba, Montserrat

A26 Barbuda

1: 45 000 WGS 84

Plans Gravenor Bay

A27 Antigua

1: 50 000 WGS 84

Plans Mamora Bay, Falmouth & English Harbours, Nonsuch Bay, Jolly Harbour Approaches

A271 North Coast of Antigua

1: 35 000 WGS 84

A28 Guadeloupe

1: 150 000 WGS 84

Plans Deshaies, Pigeon Island, Marina de Rivière Sens, Pointe-à-Pitre Approaches, Pointe-à-Pitre, Gosier, Sainte François & Marina de la Grande Saline, Port Louis, Îles de la Petite Terre

A281 Guadeloupe - Les Saintes and Marie-Galante

1: various WGS 84

Plans Les Saintes, Marie-Galante, Sainte-Anne & Anse Accul (Guadeloupe), Sainte-Marie (Guadeloupe), Petit Havre (Guadeloupe), Le Moule (Guadeloupe), Northern Approach to Pointe-à-Pitre (Guadeloupe), Grande Anse (La Desirade), Grande-Bourg (Marie-Galante)

A29 Dominica

1: 75 000 WGS 84

Plans Prince Rupert and Douglas Bay, Woodbridge Bay and Roseau Roads

A30 Martinique

1: 95 000 WGS 84

Plans St Pierre, Rade de Fort de France, Pointe du Bout, Cul-de-Sac Marin, Mouillage du François, Havre du Robert, Havre de la Trinité

A301 Pointe du Diamant to Havre de la Trinité

1: 60 000 WGS 84

Plans Havre de la Trinité, Cul-de-Sac Marin

B Martinique to Trinidad Passage Chart

1: 750 000 WGS 84

B1 St Lucia

1: 75 000 WGS 84

Plans Rodney Bay and Yacht Harbour, Port Castries, Grand Cul de Sac Bay, Marigot Harbour, Soufrière Bay and The Pitons, Laborie Bay, Vieux Fort Bay and Anse de Sables

B2 Barbados

1: 60 000 WGS 84

Plans Port St Charles & Port Ferdinand, Speightstown, Bridgetown (North), Bridgetown (South)

B3 The Grenadines -

St Vincent to Grenada 1: 200 000 WGS 84

B30 St Vincent to Mustique

1: 90 000 WGS 84 Plans Chateaubelair Bay (St Vincent), Kingstown Bay (St Vincent), Calliaqua Bay & Blue Lagoon (St Vincent), Admiralty Bay (Bequia), Friendship Bay (Bequia), Baliceaux & Battowia, West Coast Of Mustique

B31 Bequia to Carriacou

1: 90 000 WGS 84 Plans Charlestown Bay (Canouan), Tobago Cays, Clifton Harbour (Union Island), Hillsborough Bay (Carriacou), East Coast of Carriacou, South Coast of Carriacou

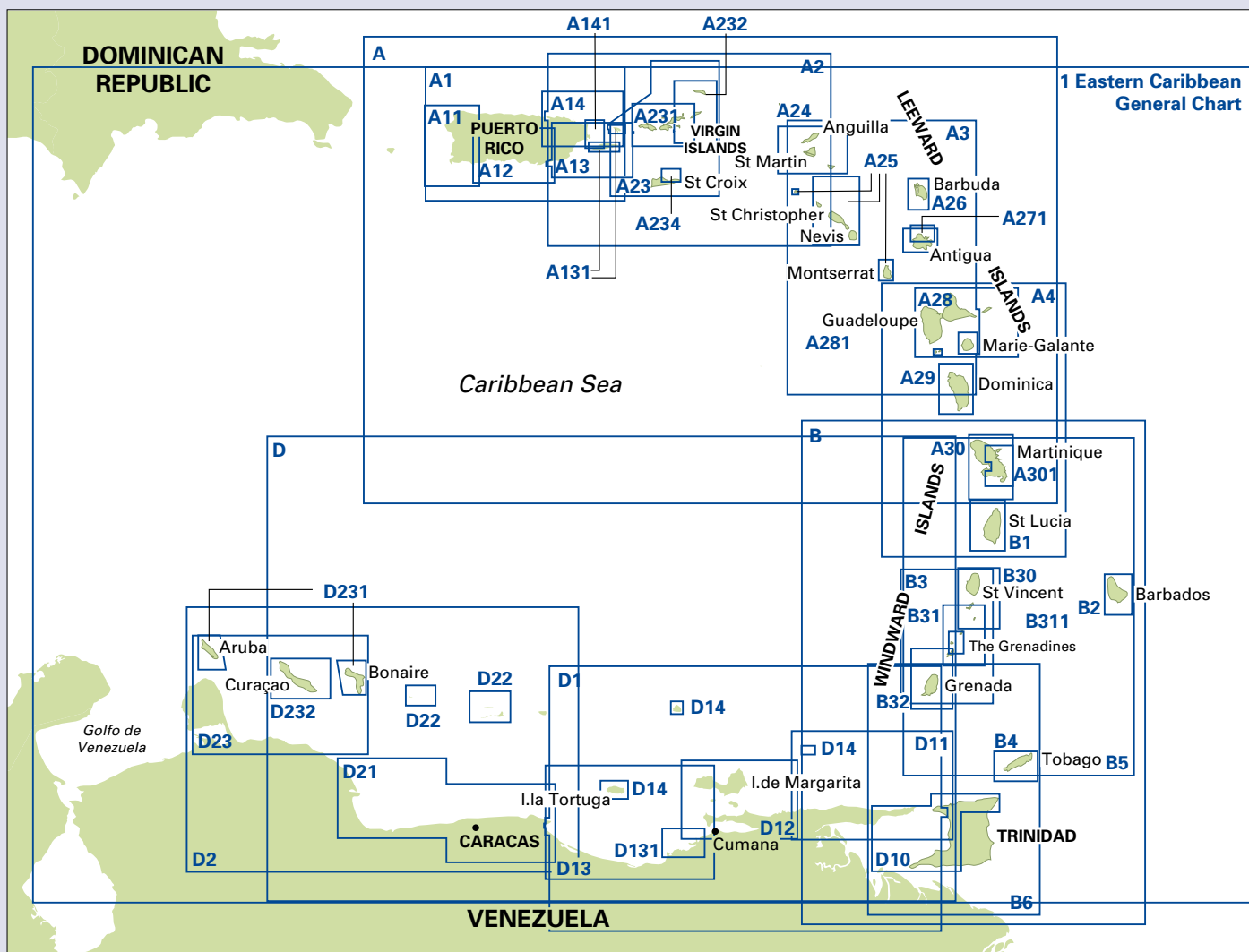
B311 Middle Grenadines - Canouan to Carriacou

1: 32 500 WGS 84

B32 Carriacou to Grenada

1: 90 000 WGS 84

Plans Tyrrel Bay (Carriacou), Sauteurs Bay, Grenada Bay, Grenville Harbour, Grenada - Southeast Coast, Grenada - South Coast, Saint George's Harbour



B4 Tobago

1: 65 000 WGS 84
Plans Man of War Bay, Tyrrel's Bay, King's Bay, Scarborough, Buccoo Reef, Plymouth

B5 Martinique to Grenada, Tobago and Barbados - Passage Chart

1: 500 000 WGS 84

B6 Grenada to Tobago and Trinidad

1: 375 000 WGS 84
Plans Chaguaramus Bay

D Gulf of Paria to Curacao Passage Chart

1: 1 021 000 WGS 84

D1 Port of Spain to Cabo Codera

Passage Chart
1: 583 700 WGS 84
Plans Puerto Carenero, Port of Spain (Trinidad), Chaguaramus Bay (Trinidad)

D10 North Coast of Trinidad and Golfo de Paria

1: various WGS 84
Plans Macqueripe Bay, La Vache Bay, Caracas Bay, Las Cuevas Bay, Chupara Bay, Matelot Bay, Grande Riviere Bay, Sans Souci Bay, Toco Bay, Chaguaramas, Pointe a Pierre, Brighton, Point Fortin, Ensenada Cariaquita, Ensenada Uquirito, Ensenada Patao, Guiria, North Coast of Trinidad, Golfo de Paria

D11 Trinidad to Carupano

1: 240 700 Undetermined Datum
Plans Carupano, Bahias Puerto Santo, Playa Cacao, Ensenada Mejillones, Ensenada Pargo, Ensenada San Francisco, Ensenada Uquire, Ensenada Cariaquita, Macuro, Ensenadas Yacua, Ensenadas Patao & Uquirito, Guiria, Port of Spain (Trinidad), Chaguaramus Bay (Trinidad)

D12 Carupano to Cumana and Isla de Margarita

1: 173 000 WGS 84
Plans Pampatar, Margarita Yachting Marina, Porlamar, Bahia de Mangle, Punta de Piedras, El Saco (Isla Coche), Cumana, Laguna Grande del Obispo, Bahia Escondida

D13 Isla de Margarita to Carenero

1: 255 000 Undetermined Datum
Plans Cumana, Islas Piritu, Puerto Carenero

D131 Puerto Mochima to Bahia de Barcelona

1: 63 900 WGS 84
Plans Marina Club Nautico El Morro, Americo Vespucio Marina & El Morro, Puerto la Cruz Marina, Inset (Bahia Bergantin to Bahia de Pertigalete), Puerto Mochima National Park

D14 Islas Los Testigos; Isla La Tortuga; La Blanquilla

1: various Various Datum
Plans Los Testigos, Isla La Tortuga, La Blanquilla, Laguna El Carenero Anchorage

D2 Cabo Codera to Cabo San Roman - Passage Chart

1: 583 700 WGS 84
Plans Puerto Carenero, Puerto Cabello

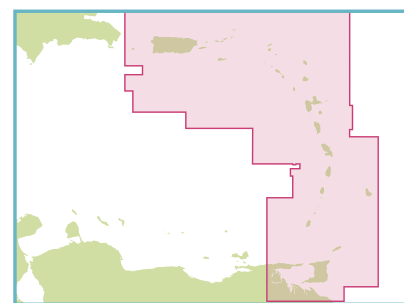
D21 Carenero to Punta San Juan

1: 244 400 WGS 84
Plans Bahia San Juan, Puerto Chichiriviche and Parque National Morrocoy, Puerto Cabello, Puerto La Cruz, Puerto Calera, Puerto La Guaira, Caraballeda YC & Marina Mar, Puerto Azul (Naiguata), Ensa de Corsarios, Puerto Carenero, Higuerote

D22 Isla Los Roques / Las Aves

1: various Undetermined Datum
Plans Las Aves, Isla Los Roques, Lighthouse Island (Ave de Sotovento), Long Island (Ave de Sotovento), Round Island (Ave de

Digital charts



ID100 Eastern Caribbean



Sotovento), Eastern End Barlovento, Cayo de Agua, Eastern End Carenero, Puerto El Roque

D23 Punta Aguide to Cabo San Roman and the A, B, C Islands

1: 255 400 WGS 84
Plans Puerto Cumarebo, Oranjestad

D231 Bonaire and Aruba

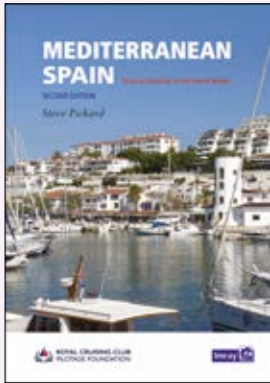
1: various WGS 84
Plans Aruba, Bonaire, Oranjestad, Lac Baai, Kralendijk

D232 Curacao

1: 88 000 PSAD 1956
Plans Santa Marta Baai, Piscaderabaai, Willemstad and Schottegat, Spaanse Water

Western Mediterranean

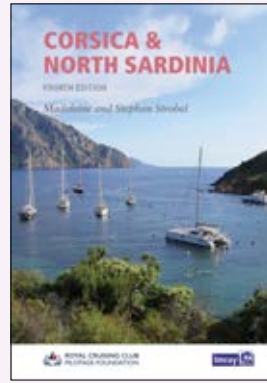
Some of the most popular cruising grounds anywhere in the world. The next cultural gem or sublime meal ashore is always only a short sail away



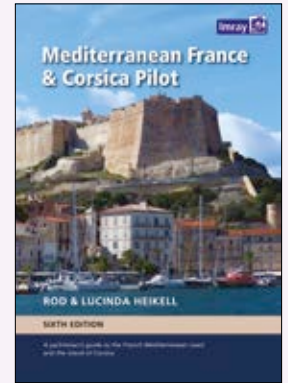
MEDITERRANEAN SPAIN
Strait of Gibraltar to the French border
Royal Cruising Club Pilotage Foundation / Steve Pickard
A4. 432pp. Hard cover. Full colour.
978178679 183 2 2nd ed. 2021



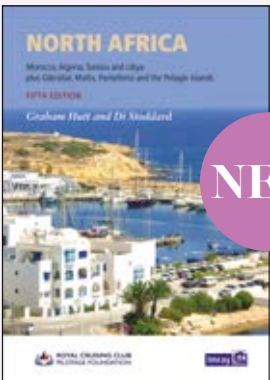
BALEARIC ISLANDS
Cruising Ibiza, Formentera, Mallorca, Cabrera & Menorca
TWELFTH EDITION
David and Susie Baggaley
Royal Cruising Club Pilotage Foundation /
David and Susie Baggaley
A4. 308 pp. Hard cover. Full colour.
978 1786679 354 6 12th ed. 2023



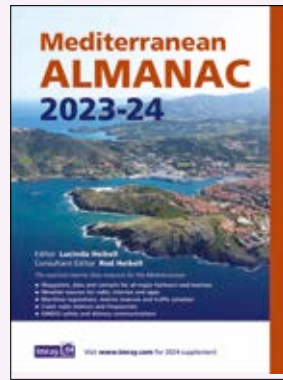
CORSICA & NORTH SARDINIA
Royal Cruising Club Pilotage Foundation / Madeleine and Stephan Strobel
A4. 215 pp. Soft cover. Full colour.
978 17867 9073 6 4th ed. 2019



MEDITERRANEAN FRANCE & CORSICA PILOT
Rod and Lucinda Heikell
A4. 360 pp. Hard cover. Full colour.
978 184623 849 9
Rev 6th ed. 2021



NORTH AFRICA
Morocco, Algeria, Libya and Tunisia including Gibraltar, Pantelleria and the Pelagic Islands and Malta.
Royal Cruising Club Pilotage Foundation/
Graham Hutt & Di Stoddard
A4. 328pp. Hard cover. Full colour.
978 178679 185 6 5th edition 2023



MEDITERRANEAN ALMANAC 2023-24
Editor Lucinda Heikell
Consultant ed. Rod Heikell
210 x 280mm. 376 pp. Soft cover.
Full colour.
978 178679 442 0 2022



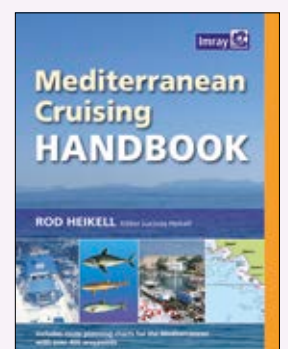
IMRAY POCKET PILOT: THE SOUTH OF FRANCE
Lucinda Heikell



IMRAY POCKET PILOT: CORSICA
Lucinda Heikell



MEDITERRANEAN WEATHER HANDBOOK FOR SAILORS
Roberto Ritossa
246 x 189mm. 150 pp. Soft cover.
Full colour.
978 184623 597 9 2nd ed. 2014

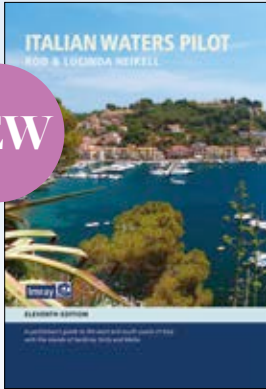


MEDITERRANEAN CRUISING HANDBOOK
Rod Heikell
246 x 189mm. 280 pp. Soft cover.
Full colour.
978 184623 170 4 6th ed. 2012



Lu Heikell talks cruising around Med France & Corsica
Steve Pickard talks about cruising Mediterranean Spain and of his own adventures in the area

NEW



ITALIAN WATERS PILOT

Rod and Lucinda Heikell

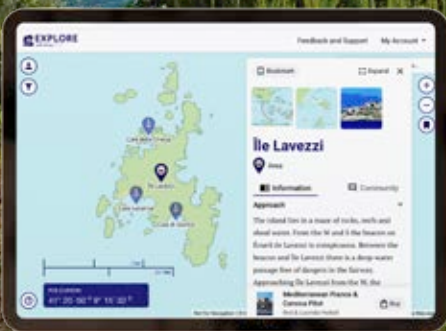
Italian Waters Pilot stands as the quintessential guide for yachtsmen, encompassing the Tyrrhenian Sea, Sardinia, Sicily, the Ionian 'heel', and Malta. This eleventh edition, crafted meticulously from the authors' first-hand explorations — from the Tuscan islands, tracing the Tyrrhenian and Ionian coasts, onto the intriguing landscapes of Sardinia, Sicily, Malta, and Gozo — offers a fresh perspective.

Key updates span across text, plans, and photographs. Where applicable, the authors have included changes and expansions for yacht harbours. Recognising the significance of marine reserves, especially around Sardinia and Sicily, this edition sheds light on the newest regulations in place. Furthermore, it touches upon the ever-critical subject of climate change and its potential impact on Mediterranean sailing.

Italian Waters Pilot remains the authoritative voice for yachts cruising the region, bridging the western and eastern Mediterranean. Rod and Lucinda Heikell, renowned for their unmatched expertise, have also penned guides on Greece and Turkey and their works are hailed as some of the finest in yachting literature.

Endorsed by both the Royal Cruising Club and The Cruising Association, this guide is a mariner's treasure.

A4. 508 pp. Hard cover.
Full colour.
978 178679 485 7 11th ed. 2024



www.explorewithimray.com
to discover more

Western Mediterranean charts

M3 Islas Baleares - Formentera, Ibiza, Mallorca, Menorca and Cabrera

1: 350 000 WGS 84

Plans Puerto de San Antonio (Ibiza), Puerto de Ibiza (Ibiza), Puerto de Palma (Mallorca), Porto Colom (Mallorca), Puerto de Mahón (Menorca), Alcudia (Mallorca), Approaches to Ciudadelá (Menorca)

M6 Île de Corse

1: 255 000 WGS 84

Plans Macinaggio, Bastia, Approaches to Calvi, Ajaccio, Approach to Propriano, Bonifacio, Îles Lavezzi

M7 Bonifacio Strait

1: 65 000 WGS 84 *Plans* La Maddalena

M7 Bonifacio Strait

1: 65 000 WGS 84 *Plans* La Maddalena

M8 North Sardegna

1: 255 000 WGS 84

Plans Arcipelago di La Maddalena - Southern Group, Golfo di Cugnana, Golfo Spurlatta, Passaggio dei Fornelli, Porto Torres, Approaches to Alghero

M9 South Sardegna

1: 255 000 WGS 84

Plans Approaches to Arbatax, Approaches to Torre Grande, Canale di San Pietro, Porto di Cagliari, Capo Carbonara, Golfo di Teulada

M10 Western Mediterranean - Gibraltar to the Ionian Sea

1: 2 750 000 WGS 84

M11 Gibraltar to Cabo de Gata & Morocco

1: 450 000 WGS 84

Plans Strait of Gibraltar, Gibraltar, Estepona, Puerto de Almerimar, Almería, Ceuta

M12 Cabo de Gata to Dénia & Ibiza

1: 450 000 WGS 84

Plans Mar Menor, Torrevieja, Alicante, Villajoyosa, Altea, Dénia

M13 Dénia to Barcelona and Ibiza

1: 450 000 WGS 84

Plans Dénia, Valencia Harbour, Tarragona, Barcelona Harbour, San Antonio (Ibiza), Port Esportiu Marina

M14 Barcelona to Bouches du Rhône

1: 440 000 WGS 84

Plans Barcelona Harbour, Barcelona Port Vell, Puerto Olímpico, Palamós, Puerto de L'Escala, Port Vendres, St-Cyprien-Plage, Cap d'Agde, Sète, Golfe de Fos

M15 Marseille to San Remo

1: 325 000 WGS 84

Plans Marseille Vieux-Port & Îles du Frioul, Îles d'Hyères, Golfe de St-Tropez, Golfe de La Napoule, Antibes, Nice, Rade de Villefranche & Cap Ferrat, Monaco

M16 Ligurian Sea

1: 325 000 WGS 84

Plans San Remo, Approaches to Genova, Golfo Marconi, Approaches to La Spezia, Viareggio, Approaches to Livorno

M17 North Tuscan Islands to Rome

1: 325 000 WGS 84

Plans Scarlino to Punta Ala, Approaches to Giglio Marina, Approaches to Civitavecchia, Approaches to Fiumicino and Fiuma Grande, Approaches to Anzio

M18 Capo d'Anzio to Capo Palinuro

1: 325 000 WGS 84

Plans Rada di Gaeta, Golfo di Pozzuoli and Rada di Napoli, Approaches to Acciaroli, Capo Palinuro

M19 Capo Palinuro to Punta Stilo

1: 325 000 WGS 84

Plans Golfo di Policastro, Approaches to Vibo Valentia, Isole Alicudi, Stretto di Messina

M20 Eastern Mediterranean - Sardegna to Port Said and the Black Sea

1: 2 750 000 WGS 84

M23 Adriatic Sea - Golfo di Trieste to Bar and Promontorio del Gargano

1: 750 000 WGS 84

M24 Golfo di Trieste to Lošinj and Rab

1: 220 000 WGS 84

Plans Novigrad, Poreč, Rovinj, Brijuni Islands to Pula, Veruda to Medulin Bay, Approaches to Punat, Approaches to Mali Lošinj, Otok Ilovik Channel

M30 Southern Adriatic and Ionian Seas - Dubrovnik to Kérkira (Corfu) & Sicilia

1: 850 000 WGS 84

Plans Approaches to Brindisi, Approaches to Siracusa

M31 Sicilia

1: 400 000 WGS 84

Plans San Vito Lo Capo, Approaches to Palermo, Catania

M32 Adriatic Italy (South) - Pescara to Bari

1: 325 000 WGS 84

Plans Porto di Ortona, Porto di Punta Penna (Vasto), Marina di San Pietro (Termoli), Isole Tremiti, Porto di Vieste, Marina del Gargano, Porto di Trani, Bari Porto Nuovo

M33 Adriatic Italy (North) - Delta del Po to Pescara

1: 350 000 WGS 84

Plans Ravenna Coast, Porto di Ravenna, Porto di Rimini, Porto di Fano, Porto di Ancona, Porto di San Benedetto del Tronto, Marina di Pescara

M34 Golfo di Venezia

1: 220 000 WGS 84

Plans Chioggia, Venezia, Approaches to Grado, Monfalcone, Trieste

M35 Sicilian Channel

1: 375 000 WGS 84

Plans Bizerte, Cap Gammarth to Carthage, Port de Kélibia, Port Yasmine Hammamet, Pantelleria

M36 South Coast of Sicilia to Malta

1: 275 000 WGS 84

Plans Licata, Porto Palo and Capo Passero, Siracusa, Grand Harbour & Marsamxett (Malta)

M40 Ligurian and Tyrrhenian Seas

1: 950 000 WGS 84

Plans Monte Argentario, Bonifacio Strait, Golfo di Salerno

M45 Tuscan Archipelago

1: 180 000 WGS 84

Plans Approaches to Porto Capraia, Approaches to Portoferraio, Bastia, Talamone, Approaches to Porto S. Stefano

M46 Isole Pontine to the Bay of Naples

1: 180 000 WGS 84

Plans Approaches to Ponza, Approaches to Porto d'Ischia, Approaches to Sorrento, Approaches to Marina Grande (Capri)

M47 Aeolian Islands

1: 140 000 WGS 84

Plans Approaches to Lipari, Bocche di Vulcano, Approaches to Milazzo

M49 West Sicily and Egadi Islands

1: 275 000 WGS 84

Plans Isola di Ustica, Isole Egadi, Approaches to Trapani, Approaches to Favignana, Approaches to Marsala, Mazara del Vallo

M50 Sardegna to Ionian Sea

1: 1 100 000 WGS 84

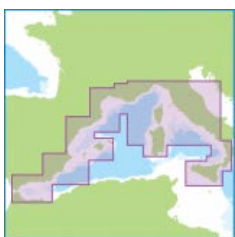
Plans Stretto di Messina

Y100 Gibraltar Bay and Harbour

1: various WGS 84

Plans Bay of Gibraltar, Gibraltar

Digital charts



Imray Navigator & Raymarine
ID50 Western Med



Imray Navigator
FR2 Mediterranean
France & Corsica



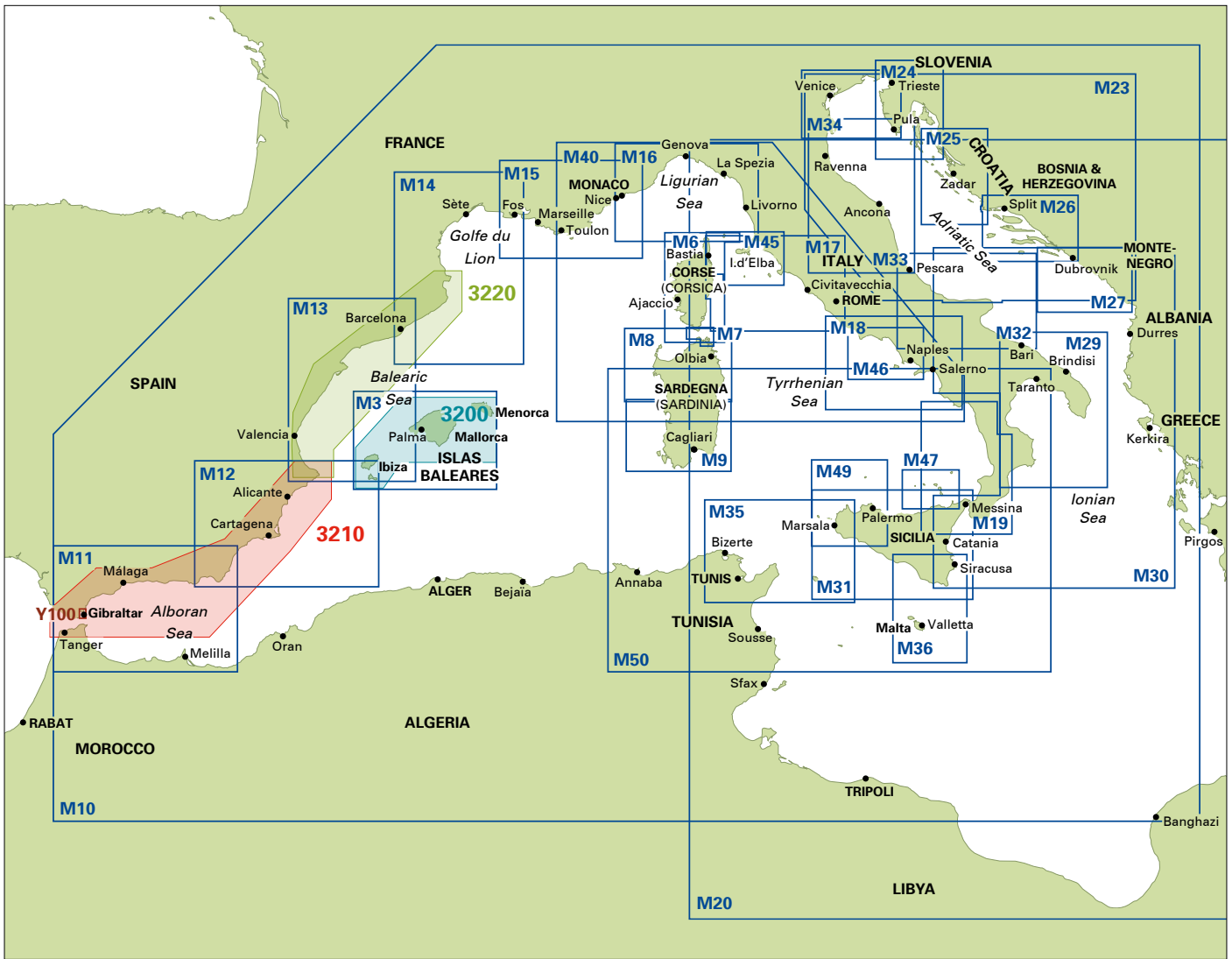
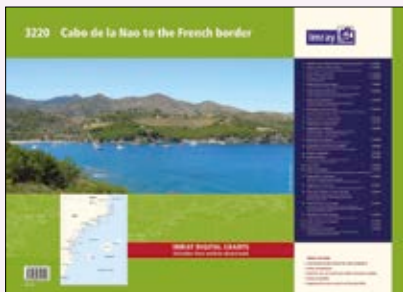


Chart packs



3220 Cabo de la Nao to the French border



3210 Gibraltar to Cabo de la Nao



3200 Islas Baleares

Eastern Mediterranean

Limitless cruising amidst a multitude of sun-baked islands flung out from ancient coastlines, and a stepping stone to the Red Sea and beyond



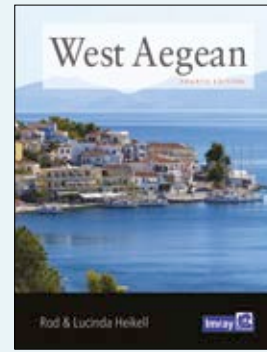
IONIAN

Rod and Lucinda Heikell
246 x 189mm. 280 pp. Soft cover.
Full colour.
978 178679 484 0 11th ed. 2023



EAST AEGEAN

Rod and Lucinda Heikell
246 x 189mm. 310 pp. Soft cover.
Full colour.
978 178679 178 8 3rd ed. 2021



WEST AEGEAN

Rod and Lucinda Heikell
246 x 189mm. 316 pp. Soft cover.
Full colour.
978 178679 087 3 4th ed. 2019



GREEK WATERS PILOT

Rod and Lucinda Heikell
246 x 189mm. 568 pp. Hard cover.
Full colour.
978 178679 336 2 14th ed. 2022

ROD AND LUCINDA HEIKELL

Rod and Lucinda Heikell are revered for their guides to the coasts and islands of the Mediterranean. Rod has spent nearly 40 years cruising these waters. He met Lu on a trip from the Azores to Gibraltar in 1999 when she joined him as crew. Many sea miles and a circumnavigation later they have lived, loved, and worked on many books together for over twenty years and live on the Isle of Wight when not out on the water in *Skyfax*, their 46' New Zealand Warwick designed boat.



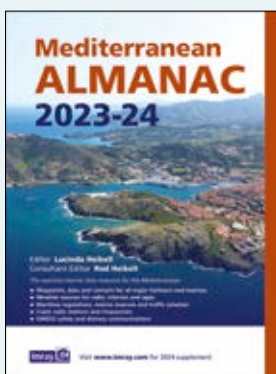
ADRIATIC PILOT

Trevor and Dinah Thompson
546pp. Hard cover. Full colour.
978 178979 021 7 8th ed. 2020



IMRAY POCKET PILOT: THE IONIAN, GREECE

Lucinda Heikell



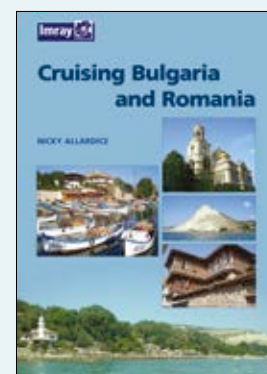
MEDITERRANEAN ALMANAC 2023-24

Editor Lucinda Heikell
Consultant ed. Rod Heikell
210 x 280mm. 376 pp. Soft cover.
Full colour.
978 178679 442 0 2022



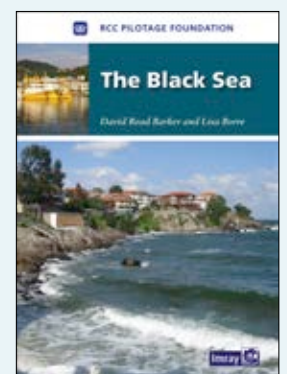
TURKISH WATERS & CYPRUS PILOT

Rod and Lucinda Heikell
A4. 400 pp. Hard cover. Full colour.
978 184623 826 0 10th ed 2018



CRUISING BULGARIA AND ROMANIA

Nicky Allardice
A4. 108 pp. Soft cover.
Monochrome.
978 0 85288 910 7 1st ed. 2007



THE BLACK SEA

RCCPF / David Read Barker
and Lisa Borre
A4. 200 pp. Soft cover. Full colour
978 184623 412 5 1st ed. 2012

 **PODCASTS**
Explore more with
Imray

Rod and Lu Helkell share their love for all things Greek



Eastern Mediterranean charts

M20 Eastern Mediterranean - Sardegna to Port Said and the Black Sea

1: 2 750 000 WGS 84

M21 South Coast of Turkey, Syria, Lebanon & Cyprus - Passage Chart

1: 785 000 WGS 84

Plans Alanya Limani (Turkey), Larnaca Marina (Cyprus), Mersin (Turkey)

M22 Egypt to Israel, Lebanon and Cyprus - Passage Chart

1: 785 000 WGS 84

Plans Larnaca Marina (Cyprus), Jounié (Lebanon), Hefa (Haifa) (Israel), Bur Sa'id (Port Said) (Egypt)

M23 Adriatic Sea - Golfo di Trieste to Bar and Promontorio del Gargano

1: 750 000 WGS 84

M24 Golfo di Trieste to Lošinj and Rab

1: 220 000 WGS 84

Plans Novigrad, Pore , Rovinj, Brijuni Islands to Pula, Veruda to Medulin Bay, Approaches to Punat, Approaches to Mali Lošinj, Otok Ilovik Channel

M25 Otok Rab to Šibenik

1: 220 000 WGS 84

Plans Prolaz Zapuntel Passage, Passage Between Otok Molat & Dugi Otok, Zadar, Luka Telaš ica, The Kornati Islands, Šibenik and Rijeka Krka, Prolaz Proversa Vela & Mala

M26 Split to Dubrovnik

1: 220 000 WGS 84

Plans Luka Rogoznica, Trogirski Kanal, Approaches to Split, The Drvenik Islands, Splitska Vrata, Approaches to Hvar & the Pakleni Islands , Approaches to Kor ula, Approaches to Ublj , Approaches to Gruž & Dubrovnik Marina

M27 Dubrovnik to Bar and Ulcinj

1: 220 000 WGS 84

Plans Luka Pola e, The Elaphite Islands, Approaches to Dubrovnik, Boka Kotorska, Tivat, Approaches to Budva, Bar Marina, Ulcinj

M29 Golfo di Taranto

1: 375 000 WGS 84

Plans Approaches to Brindisi, Approaches to Otranto, Approaches to Gallipoli, Approaches to Crotona

M30 Southern Adriatic and Ionian Seas -Dubrovnik to Kérkira (Corfu) & Sicilia

1: 850 000 WGS 84

Plans Approaches to Brindisi, Approaches to Siracusa

G1 Mainland Greece and the Peloponnisos -Passage Chart

1: 729 000 WGS 84

Plans Vórión Stenón Kérkiras, Ríon - Andírrion Bridge, Approaches to Pátras

G11 North Ionian Islands - Nísos Kérkira to Nísos Levkas

1: 185 000 WGS 84

Plans Continuation of North Ionian Islands to Nísos Othoní, Vórión Stenó Kérkiras, Órmos Gouvíon (Nísos Kérkira), Kérkira (Corfu Town) (Nísos Kérkira), Órmos Párga, Continuation of Amvrakikós Kólpos, Limín Alípa (Nísos Kérkira), Órmos Lákká (Nísos Paxoi), Port Gaios (Nísos Paxoi)

G12 South Ionian Islands - Nísos Levkas to Nísos Zákynthos

1: 190 000 WGS 84

Plans Dhióriga Levkádhos (Levkas Canal), Kólpos Aetouí (N. Ithaca), Órmos Argostoliou (N. Kefallínia), Órmos Zákynthou (N. Zákynthos)

G121 The Inland Sea

1: 95 000 WGS 84

Plans Dhioriga Levkádhos (Levkas Canal), Vasilikí (N. Levkas), Órmos Fiskárdho (N. Kefallínia), Órmos Áyios Eufímia (N. Kefallínia), Órmos Frikou (N. Itháca), Kálamos Harbour (N. Kálamos)

G13 Gulfs of Patras and Corinth - Patraikós Kólpos and Korinthiakós Kólpos

1: 220 000 WGS 84

Plans Mesolóngion, Liménas Pátron, Ríon- Andírrion Bridge, Órmos Aiyíou, Krissaiós Kólpos, Órmos Andíkirion, Kiato, Órmos Loutrákiou, Corinth Canal (Dhiórix Korínthou)

G14 Saronic and Argolic Gulfs

1: 190 000 WGS 84

Plans Marina Alimos (Kalamáki), Stenón Metópis, Limín Póros, Nísídhos Tselevínia, Stenón Spétsai, Návplion

G141 Saronikós Kólpos - Corinth Canal to Ákra Souínion and Nísos Póros

1: 110 000 WGS 84

Plans Órmos Falírou, Marina Alimos (Kalamáki), Limín Ágina

G15 Southern Pelopónnisos - Kalámata to Nísos Kriti and Ákra Tourkovigla

1: 190 000 WGS 84

Plans Liménas Kalamátas, Yíthion, Órmos Kapsáli, Dhiakofti, Monemvasía (Yéfira), Nísos Andikíthera to Nísos Kriti

G16 Western Pelopónnisos - Killini to Kalamáta

1: 190 000 WGS 84

Plans Limín Killinis, Limín Katakólou, Órmos Kíparissias, Órmos Navarínou, Stenón Methónis, Koróni, Liménas Kalamatás

G2 Aegean Sea (North) - Passage Chart

1: 750 000 WGS 84

Plans Approaches to Ístanbul, Izmit Körfezi, Çanakkale Bogazi (The Dardanelles)

G21 Northwest Aegean

1: 275 000 WGS 84

Plans Approaches to Thessaloníki, Néa Skioni, Pórtó Koufó, Nísis Dhiáporos Anchorages, Nísis Ammouliani, Stenón Thásou

G22 Northeast Aegean

1: 275 000 WGS 84

Plans Approaches to Lágos and Fanáron, Órmos Moudhrou, Entrance to Çanakkale Bo azi, Nara Geçidi, Continuation to Nísos Áyios Evstrátios

G23 Marmara Denizi

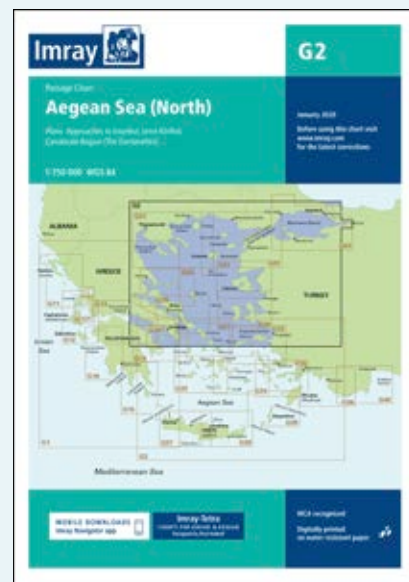
1: 275 000 WGS 84

Plans Türkeli & Pa alimani Islands, Istanbul, Princes Islands, Approaches to Pendik

G25 Northern Sporades and North Évvoia

1: 190 000 WGS 84

Plans Órmos Skiáthou (Nísos Skiáthos), Stenón Alonnísou, Linariá (Nísos Skíros), Continuation of Maliakós Kólpos, Nisoi Likhades



G26 Nísos Évvoia

1: 190 000 WGS 84

Plans Linariá (Nísos Skíros), Kími (Nísos Évvoia), Approaches to Khalkís, Porthmós Evrípou, Dhiavlos Stenó, Erétria (Nísos Évvoia), Nísídhos Petaloi & Approaches to Marmari

G27 Nísos Lésvos & the Coast of Turkey

1: 190 000 WGS 84

Plans Ayvalik, Sígri (N. Lésvos), Entrance to Kólpos Kalloní (N. Lésvos), Entrance to Kólpos Yéras (N. Lésvos), Mitilíni (N. Lésvos), Bademli Limani

G28 Nísos Khíos & the Coast of Turkey

1: 190 000 WGS 84

Plans Approaches to Psará (Nísos Psará), Approaches to Khíos (Nísos Khíos), Órmos Mandráki (Nísos Oinoússa), Çesme Körfezi (Turkey), Foça Limani (Turkey), Si acik Limani (Turkey)

G3 Aegean Sea (South)

1: 750 000 WGS 84

Plans Approaches to Rhodes

G31 Northern Cyclades

1: 200 000 WGS 84

Plans Limín Áy. Nikoláou (Nísos Kea), Approaches to Finikas (Nísos Síros), Órmos Naousis (Nísos Páros), Míkonos & Approaches (Nísos Míkonos), Órmos Gávriou (Nísos Andros)

G32 Eastern Sporades, Dodecanese and the Coast of Turkey

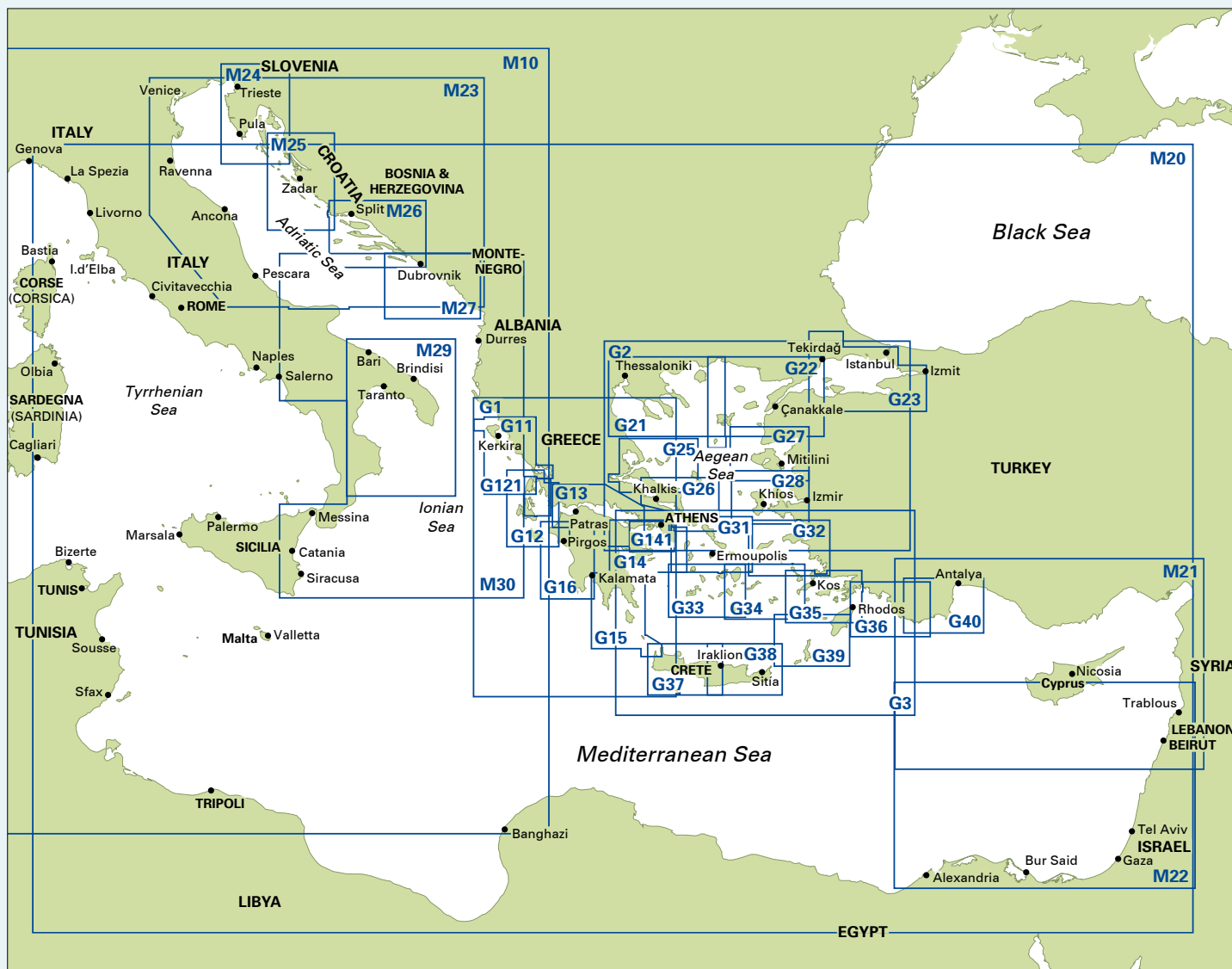
1: 200 000 WGS 84

Plans Ku adasi (Turkey), Stenón Sámou, Póros Fournon, Órmos Pátmou (Nísos Pátmos), Órmos Parthéni (Nísos Léros), Yalíkkavak Limani (Turkey), Stenón Lérou

G33 Southern Cyclades - (West Sheet)

1: 190 000 WGS 84

Plans Stenón Kimólou-Poliághou and Stenón Milou-Kimólou, Órmos Náxou (N. Náxos), Órmos Livádhíou (N. Sérifos), Stenón Andipárou



G34 Southern Cyclades - (East Sheet)

1: 200 000 WGS 84
Plans Órmos Íou (Nísos Íos), Koufonisia (Epano Koufonisia), Órmos Maltezana (Análipsis) (Nísos Astipálaia)

G35 Dodecanese and the Coast of Turkey

1: 190 000 WGS 84
Plans Approaches to Kós (Nísos Kós), Approaches to Turgutreis (Turkey), Bodrum (Turkey), Approaches to Ródhos (Nísos Ródhos), Órmos Sími (Nísos Sími)

G36 Marmaris to Kekova Adasi

1: 200 000 WGS 84
Plans Marmaris Limani, Skopea Limani, Göçek, Fethiye, Approaches to Kastellórizo and Ka

G37 Nísos Kríti (West)

1: 190 000 WGS 84
Plans Kali Limenes, Órmos Áy. Galínis, Palaiokhora, Órmos Gramvoúsa, Khanía, Órmos Souðhas, Rethimno

G38 Nísos Kríti (East)

1: 190 000 WGS 84
Plans Iraklion, Spinalónga, Áyios Nikólaos, Sitía

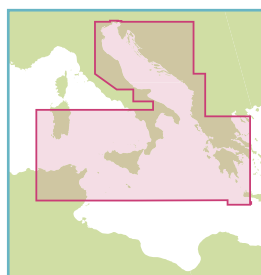
G39 Nísos Kárpathos to Nísos Ródhos

1: 190 000 WGS 84
Plans Limín Fri (Nísos Kásos), Pigádhia (Nísos Kárpathos), Órmos Líndhou (Nísos Ródhos), N. Kháiki to N. Alimiá

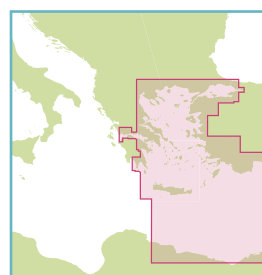
G40 Kas to Antalya

1: 200 000 WGS 84 Plans Kekova Roads, Kekova Adasi, Finike, Antalya Celebi Marina, Kemer Turkiz Marina

Digital charts



Imray Navigator and Raymarine
ID60 Central Mediterranean

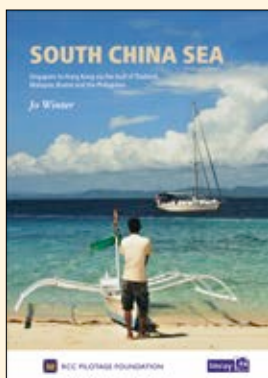


Imray Navigator and Raymarine
ID70 Eastern Mediterranean

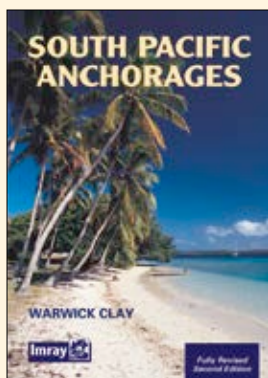


World Cruising

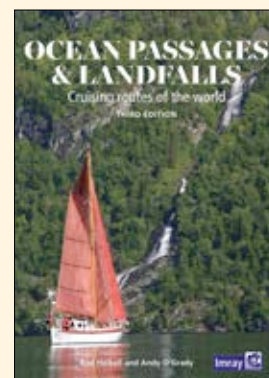
Blue water trade wind cruising and the draw of high latitude sailing to the far south



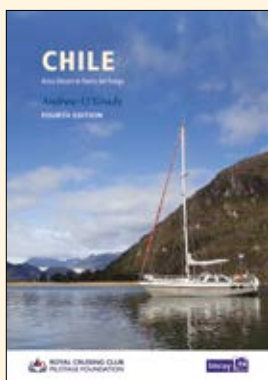
SOUTH CHINA SEA
Royal Cruising Club Pilotage
Foundation / Jo Winter
A4. 328 pp. Hard cover. Full colour.
978 184623 186 5 1st ed. 2019



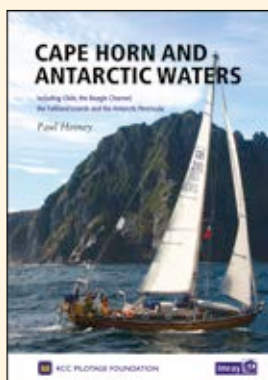
SOUTH PACIFIC ANCHORAGES
Warwick Clay
A4. 280 pp. Soft cover. Monochrome
0 85281 476 3 2nd ed. 2004



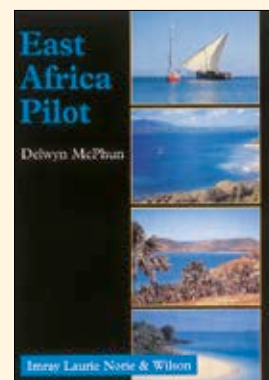
OCEAN PASSAGES AND LANDFALLS
Rod Heikell and Andrew O'Grady
A4. 416 pp. Hard cover. Full colour
978 178679 302 7 3rd ed. 2022



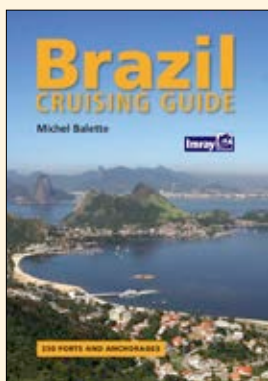
CHILE
Arica Desert to Tierra del
Fuego
Royal Cruising Club Pilotage
Foundation / Andrew O'Grady
A4. 280 pp. Soft cover. Full colour.
978 178679 020 0 4th ed. 2019



CAPE HORN AND ANTARCTIC WATERS
including Chile, the Beagle Channel, the Falkland Islands and the Antarctic peninsula
Royal Cruising Club Pilotage
Foundation / Paul Heiney
A4. 224pp. Hard cover. Full colour.
978 184623 836 9 1st ed. 2017



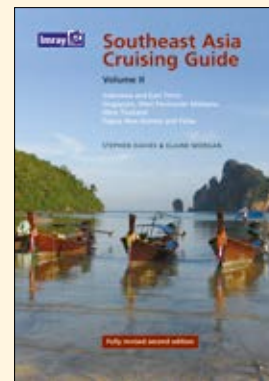
EAST AFRICA PILOT
Delwyn McPhun
A4. 230 pp. Hard cover. Full colour.
0 85288 251 3 1st ed. 1998



BRAZIL CRUISING GUIDE
Michel Balette
A4. 300 pp. Hard cover. Full colour
978 184623 201 5 1st ed. 2010

 **PODCASTS**
Explore more with
Imray

Discovering The South
China Sea from Singapore to
Taiwan, with Jo Winter



SOUTHEAST ASIA CRUISING GUIDE
Volume II: Indonesia and East Timor, Singapore, West Peninsular Malaysia, West Thailand, Papua New Guinea and Palau
Stephen Davies & Elaine Morgan
A4. 264 pp. Hard cover. Full colour.
978 184623 042 4 2nd ed. 2008

NEW



RED SEA PILOT

Stephen Davies & Elaine Morgan

In the meticulously revised third edition of this comprehensive guide, the authors build upon the foundations that have made *Red Sea Pilot* a classic title. Complemented by inspirational photography and new Imray plans, this guide paints a detailed portrait of the entire expanse of the Red Sea, from Aden to Suez and its canal.

The leaps in sailing technology since the previous edition in the early 2000s are evident in this upgraded book. With the current advancements in satellite imagery, the authors have been able to produce far more precise depictions of remote coastlines, harbours, and havens. Additionally, a dedicated section provides invaluable recommendations on readying one's vessel for the unique conditions of the Red Sea.

The result is a third edition of *Red Sea Pilot* that stands out not only for its rich content but also for its user-friendly approach, emphasising safety, preparation, and a sense of wonder for every cruiser in this fascinating cruising ground.

A4. Hard cover. Full colour.
978 184623 941 0 3rd ed. 2024



Almanacs



THE CRUISING ALMANAC 2024

The Cruising Association and Imray

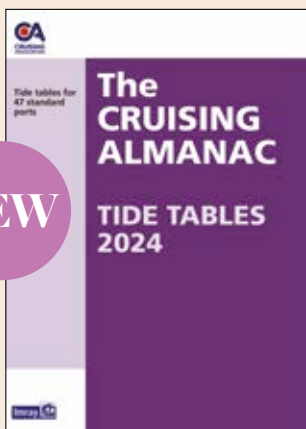
The Cruising Almanac remains the perfect onboard companion for cruising sailors, providing a hard-copy source of information packed with data to help passage planning and for quick reference to hundreds of ports and marinas. The Almanac encompasses Northwest Europe from the Shetlands to Gibraltar and from the Baltic to the west coast of Ireland.

This 2024 edition includes some changes to the presentation of essential information to make it more readily accessible. The Netherlands section has been revised so that the format conforms to the other regions. A new chapter for Northwest Spain has been created to allow more extensive overall coverage of the Spanish and Portuguese Atlantic coasts.

2024 tide tables for 47 standard ports are included in a separate booklet.

A4. 479 pp. Soft cover. Full colour

978 178679 444 4

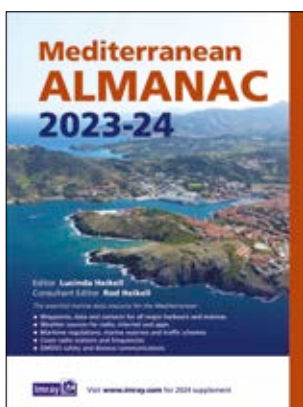


CRUISING ALMANAC TIDE TABLES 2024

Also available separately from *The Cruising Almanac 2024*, the 2024 tide tables now also include tide times for Zeebrugge.

A4. Paperback. Black & white

978 178679 447 5



MEDITERRANEAN ALMANAC

Edited by Lucinda and Rod Heikell

The essential marine data resource for yachts sailing the Mediterranean, the Imray *Mediterranean Almanac* is published biennially with updates available in a downloadable supplement at the end of the first year.

It includes:

- Data, waypoints and contacts for all major harbours and marinas throughout the Mediterranean Sea plus Atlantic Islands.
- Weather sources for radio, internet and apps
- Information on lights and buoys
- Maritime regulations, marine reserves and traffic schemes
- Coast radio stations and frequencies
- GMDSS safety and distress communications
- Harbour plans throughout, with the familiar Imray cartography which adds clarity to their use. There are the usual detailed revisions throughout this edition, plus many new harbour plans.

210 x 280mm. 376 pp. Soft cover.

Full colour.

978 178679 442 0 2022

General Interest

IMRAY EXPLORER GUIDES

William Thomson

180x120 mm Soft cover. Full colour

1st editions 2021

TIDES

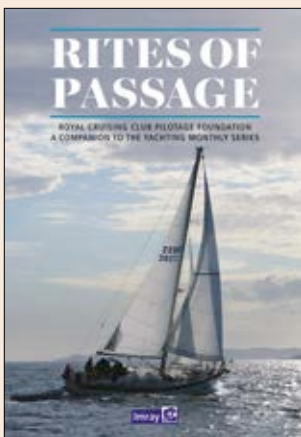
978 178679 292 1

TIDAL STREAMS

978 178679 294 5

THE MOON

978 178679 296 9

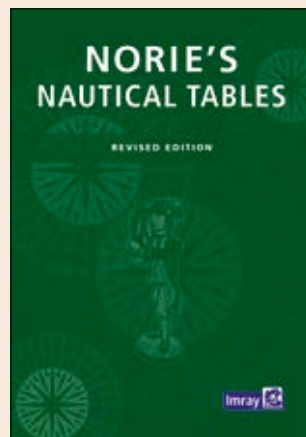


RITES OF PASSAGE

Royal Cruising Club Pilotage Foundation / Various authors

A4. Soft cover. Full colour.

978 178679 031 6 1st ed. 2020

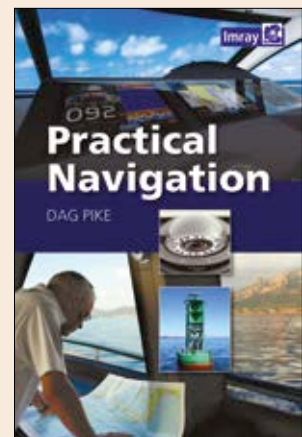


NORIE'S NAUTICAL TABLES

Edited by François Hugo

A4. 576 pp. Hard cover.

978 178679 359 1 Revised edition 2022



PRACTICAL NAVIGATION

Dag Pike

156mm x 234mm. 152 pp. Soft cover.

Full colour.

978 184623 681 5 1st ed. 2015



OCEAN PLOTTING SHEETS - NORTHERN / SOUTHERN HEMISPHERE

Stokey Woodall

A pad of 50 plotting sheets.

Northern Hemisphere

978 184623 829 1



Southern Hemisphere

978 184623 830 7

Inland Waterways of Great Britain



Inland Waterways Association guides

These popular Imray inland waterways guides have been revised with experienced boat-owners and navigators from the Inland Waterways Association.

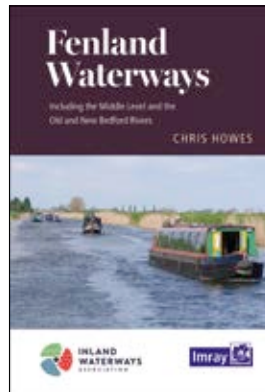
NEW



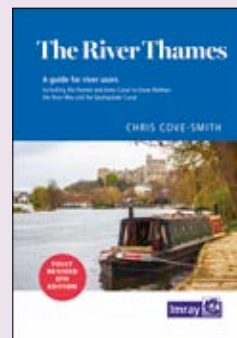
THE RIVER GREAT OUSE and its tributaries
Chris Howes
234 x 160mm. 268 pp.
Spiral bound. Full colour.
978 178679 534 2 7th ed. 2023



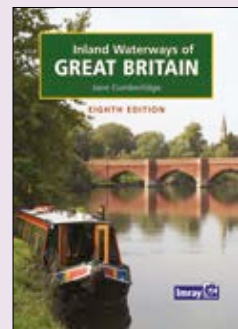
THE RIVER NENE
Roger Green
156 x 234mm. 208 pp.
Spiral bound. Full colour.
978 178679 163 4
1st edition 2020



FENLAND WATERWAYS
Chris Howes
235 x 160mm. 112 pp.
Spiral bound. Full colour.
978 178679 148 1
1st edition 2020

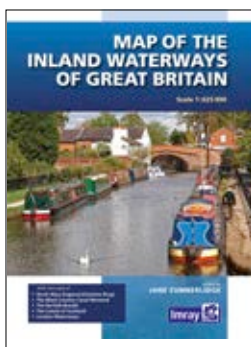


THE RIVER THAMES
Chris Cove-Smith
A5. 220 pp. Spiral bound soft cover.
Full colour.
978 178679 184 9
8th ed. 2022

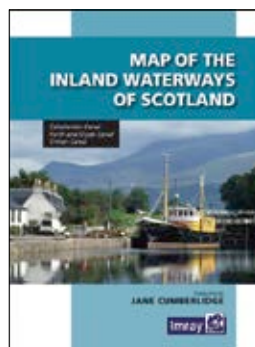


INLAND WATERWAYS OF GREAT BRITAIN
Edited by Jane Cumberlidge
A4. 300 pp. Hard cover. Full colour.
With folded waterways map.
978 184623 010 3
8th ed. 2009

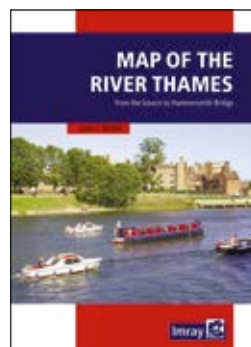
Inland Waterways of Great Britain maps



MAP OF THE INLAND WATERWAYS OF GREAT BRITAIN
Edited by Jane Cumberlidge
1:625 000 folded in cover.
978 184623 827 7
updated to 2020



MAP OF THE INLAND WATERWAYS OF SCOTLAND
Compiled by Jane Cumberlidge
Various scales. Folded in cover.
978 184623 522 1 2nd ed. 2013



MAP OF THE RIVER THAMES
From the source to Hammersmith Bridge
1:50 000 Folded in cover
978 184623 237 4 2020



NAVIGATING THE THAMES
Robert Ludlow
246 x 189mm. Full colour.
Spiral bound
978 184623 489 7
1st ed. 2012

Inland Waterways of Great Britain



PODCASTS

Explore more with
Imray

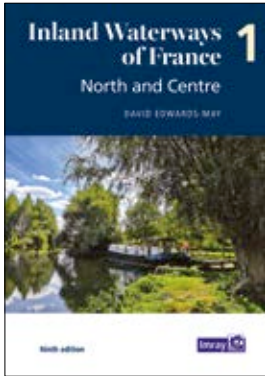
Discover the hidden delights
of the inland waterways
of East Anglia and the
Fenlands, with Chris Howes

Photo © Shutterstock /Alex Puddephatt

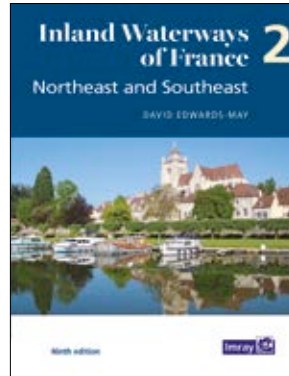
www.inray.com

Inland Waterways of Europe

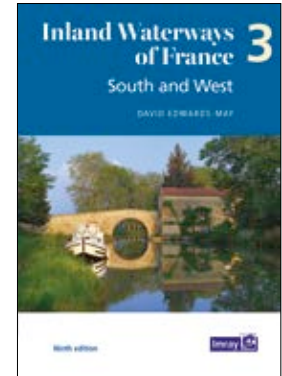
Inland Waterways of France



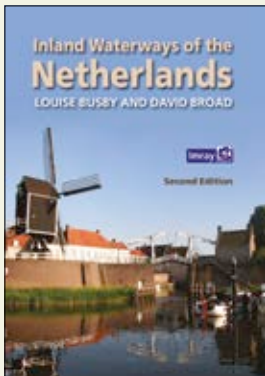
Volume 1
North and Centre
 David Edwards-May
 A4. 202 pp. Full colour. Soft cover.
 978178679 304 1 9th ed. 2021



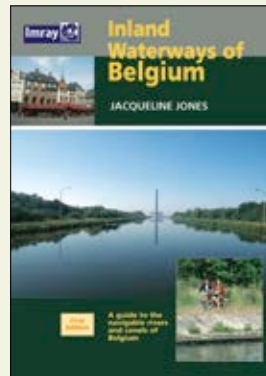
Volume 2
Northeast and Southeast
 David Edwards-May
 A4. 128 pp. Full colour. Soft cover.
 978 178679 306 5 9th ed. 2021



Volume 3
South and West
 David Edwards-May
 A4. 154 pp. Full colour. Soft cover.
 978 178679 308 9 9th ed. 2021



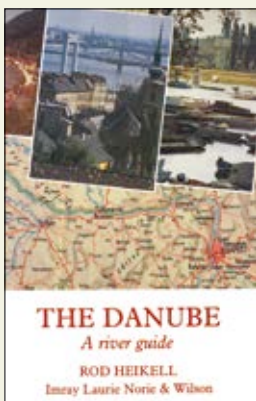
INLAND WATERWAYS OF THE NETHERLANDS
 Louise Busby and David Broad
 A4. 285 pp. Soft cover. Full cover.
 978 184623 748 5 2nd ed. 2016



INLAND WATERWAYS OF BELGIUM
 Jacqueline Jones
 A4. 170 pp. Soft cover. Full colour.
 Folded map.
 978 085288 760 8 1st ed. 2005

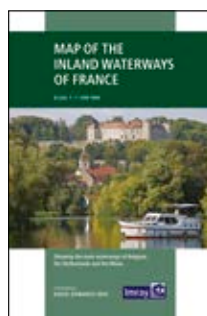


INLAND WATERWAYS OF GERMANY
 Barry Sheffield with revisions by Catherine & John Best and Robert Thomas
 A4. 184 pp. Soft cover. Full colour.
 978 184623 463 7 Revised 1st ed. 2016

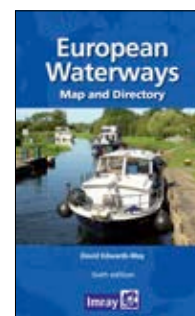


THE DANUBE – A river guide
 Rod Heikell
 A5. 200 pp. Soft cover.
 Monochrome.
 978 085288 147 7 1st ed. 1991

Inland Waterways of Europe maps



MAP OF THE INLAND WATERWAYS OF FRANCE
 David Edwards-May
 1:1,500,000
 Folded in cover.
 978 178679 064 4
 3rd ed. 2019



EUROPEAN WATERWAYS MAP AND DIRECTORY
 David Edwards-May
 Soft cover. Full colour
 979 109442 900 6
 6th ed. 2021

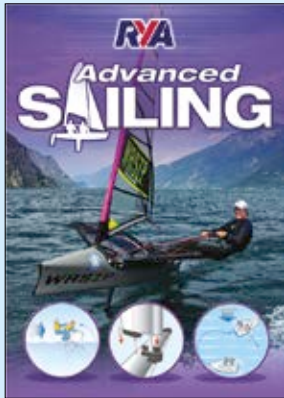


 **PODCASTS**
Explore more with
Imray

Discover the Inland
Waterways of France
with David Edwards-May



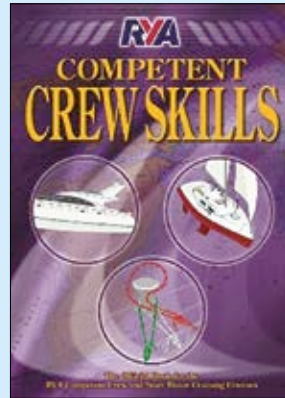
The RYA is the UK governing body representing sailing, windsurfing, motor boating, and personal watercraft, at sea and on inland waters. It works for the good of all who enjoy these activities, campaigning for their interests at local, regional; national, European, and world level. Every year more than 250,000 people take an RYA training course or qualification. RYA training schemes are available worldwide.
www.rya.org.uk



RYA SAILING ADVANCED HANDBOOK

G12

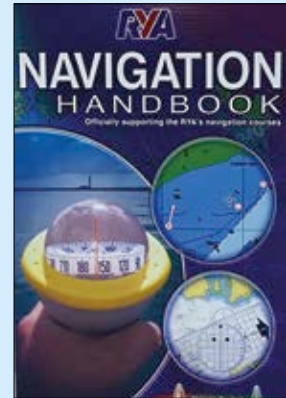
3rd ed. 2019
978 191001 709 8



RYA COMPETENT CREW SKILLS

CCPCN

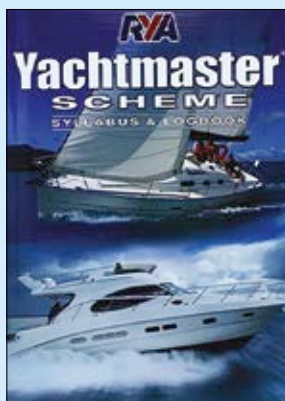
2nd ed. 2014
978 190643 590 5



RYA NAVIGATION HANDBOOK

G6

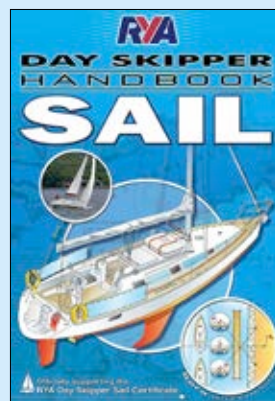
Melanie Bartlett
2nd ed. 2013
978 190643 594 3



RYA YACHTMASTER SCHEME SYLLABUS AND LOG BOOK

G158

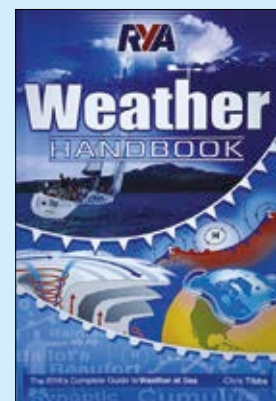
2015
978 191001 707 4



RYA DAY SKIPPER HANDBOOK SAIL

G71

Sarah Hopkins
2012
978 190510 494 9



RYA WEATHER HANDBOOK

G133

Chris Tibbs
1st ed. 2017
978 191001 714 2

www.imray.com for the full range of RYA products