

Imray Correction Notice ICC67-2

17 April 2024

Chart **C67** WGS 84

Edition 2017

Versions available:

New Edition (corrected to November 2017)

Update (corrected to November 2018)

Update (corrected to January 2020)

Update (corrected to March 2021)

Update (corrected to March 2022)

Update (corrected to April 2024)

NOTES

Below is a complete list of corrections issued since the 2017 edition of this chart was published.

Each correction is issued with an ILNW reference number and year.

Corrections are listed chronologically in ascending order.

For Update versions of this chart, please check the bottom left corner of the chart to determine the last applied correction.

Any further corrections will be applicable from that point onwards.

1 **Stoerhead**

Amend range of Lt Fl.15s59m24M to 18M in 58°14'·40N 5°24'·16W (ILNW 16/18)

2 **Rubha Réidh**

Amend range of Lt Fl(4)15s37m24M to 18M in 57°51'·53N 5°48'·71W (ILNW 29/19)

3 **Broad Bay or Loch a Tuath**

Insert Lt Fl.WRG.2s in 58°16'·02N 6°17'·73W (ILNW 72/19)

4 **Stornoway Harbour (Plan D)**

Amend Lt Iso.WRG.10s24m5M to DirWRG.10s24m5M in 58°12'·00N 6°23'·54W. There have been changes to the Lt sectors as follows:

277° - Iso.G - 282° - Al.WG - 287° - Iso.W - 290° - Al.WR - 292° - Iso.R - 299°

It has been reported that Lt Iso.WRG.3s8m3M in 58°11'·29N 6°22'·83W has been extinguished. (ILNW 255/19)

5 **Stornoway Harbour (Plan D)**

Replace:

R Bn with R Lt Bn Fl(2)R.10s2M in 58°11'·67N 6°22'·56W

G Bn with G Lt Bn Q.G.2M in 58°11'·59N 6°23'·04W (ILNW 260/19)

6 **Stornoway Harbour (Plan D)**

Delete Lt Fl.G.6s8m in 58°12'·14N 6°22'·98W (ILNW 263/19)

7 **Stornoway Harbour (Plan D)**

Works are underway to construct a new marina at Newton Basin. Insert label *Works in progress (2019)* centred on 58°12'·22N 6°22'·91W

Insert Y special spher. Lt buoy Fl.Y.5s in 58°12'·29N 6°23'·20W (ILNW 290/19)

8 **Sound of Taransay**

Replace depth 7·7m with depth 1·0m *Rep (2019)* in 57°52'·62N 7°00'·54W (ILNW 391/19)

9 **Stornoway Harbour (Plan D)**

Further to ILNW 255/19 the Lt Iso.WRG.3s8m3M in 58°11'·29N 6°22'·83W is now in operation. There have been changes to the Lt sectors

as follows:

150° - Iso.G - 174° - Iso.W - 185° - Iso.R - 205° (ILNW 571/19)

10 **Eilean Dubh W**

Replace depth 16m with depth 2·9m, enclosed by 5m contour in 57°58'·6N 5°26'·6W (ILNW 645/19)

11 Scalpay

Amend range of Eilean Glas **LT HO**. FI(3)20s43m23M to 18M in 57°51'·42N 6°38'·51W (ILNW 666/19)

12 Isle of Lewis, Branahuie Bay

Delete Lt 2F.R in 58°11'·7N 6°19'·0W (ILNW 670/19)

13 Stornoway Harbour (Plan D)

Insert accompanying block correction centred on 58°12'·09N 6°22'·38W (ILNW 674/19)

14 Stornoway Harbour (Plan D)

Amend wreck depth from 4.9m to 2.7m in 58°11'·83N 6°23'·16W (ILNW 246/20)

15 Gruinard Is. S

Replace depth 2.9m with 1.4m in 57°52'·44N 5°27'·30W (ILNW 595/20)

16 Ullapool (Plan C)

Insert depth 1.5m in 57°53'·63N 5°10'·10W, extend 2m contour S to enclose. Delete depth 7.4m close E
Delete dangerous Wk sym in 57°53'·56N 5°09'·17W (ILNW 596/20)

17 Tanera Beg S

Insert depth 3.8m in 57°59'·58N 5°26'·18W. Delete 7.2m close NE
Replace depth 0.8m with rock awash sym. in 57°59'·41N 5°28'·30W (ILNW 48/21)

18 Newton Marina (Plan D)

Works on Newton Marina are now complete. The marina provides 81 berths, a slipway and a 100T hoist.

Insert Fl.G Lt in:

58°12'·26N 6°22'·89W

58°12'·24N 6°22'·85W

58°12'·23N 6°22'·81W

Insert lgd (*buoyed*) centred on 58°12'·28N 6°22'·99W (ILNW 333/21)

19 Stornoway Harbour (Plan D)

Amend Lt from DirWRG.10s.24m5M to DirWRG.4s23m5M in 58°12'·00N 6°23'·54W (ILNW 376/21)

20 Sandwich Bay, Stornoway (Main chart & Plan D)

Main chart

Amend Lt Oc.WRG to DirWRG in 58°12'·17N 6°22'·15W

Plan D

The Sandwich Bay Lt in 58°12'·18N 6°22'·15W has moved S approx. 20 metres to 58°12'·17N 6°22'·15W

The light characteristic has been amended to DirWRG.4s10M with adjusted sectors of:

336°-Iso.G-339°Al.WG-341°-Iso.W-347°-Al.WR-349°-Iso.R-352° (ILNW 15/22)

21 South Harris E

Amend depth:

5·0m to 3·8m in 57°51'·30N 6°24'·58W (*Shiant Rock*)

2·3m to 1·6m in 57°52'·53N 6°45'·96W

1·4m to 0·4m in 57°49'·54N 6°43'·50W (*Bogha Bhocaig*) (ILNW 208/22)

22 Lochinver (Plan B)

Delete minor Lt Fl.5s in 58°08'·86N 5°14'·90W (ILNW 277/22)

23 Stornoway Harbour (Plan D)

Insert Lt Fl.G.3s3M at the end of Pier 2 in 58°12'·40N 6°23'·34W

Work has commenced on a new deep water terminal within the harbour.

Insert restricted area linework joining:

58°11'·80N 6°23'·31W

58°11'·82N 6°23'·06W

58°11'·61N 6°22'·94W

58°11'·49N 6°23'·14W

Add assoc lgd *Terminal Under construction* (ILNW 338/22)

24 Isle of Lewis N

Insert Y special purpose superbuoy FI(5)Y.20s with assoc racon sym and lgd A/S in 58°24'·54N 6°47'·10W (ILNW 29/24)

25 Ullapool (Plan C)

Harbour works are now complete.

Insert coastline joining:

57°53'·72N 5°09'·57W

57°53'·74N 5°09'·49W

57°53'·76N 5°09'·45W

Insert jetty joining:

57°53'·74N 5°09'·49W

57°53'·74N 5°09'·45W

57°53'·73N 5°09'·40W

Insert pontoon between 57°53'·70N 5°09'·40W and 57°53'·71N 5°09'·35W

Insert Lt Fl.R.5s in 57°53'·71N 5°09'·35W

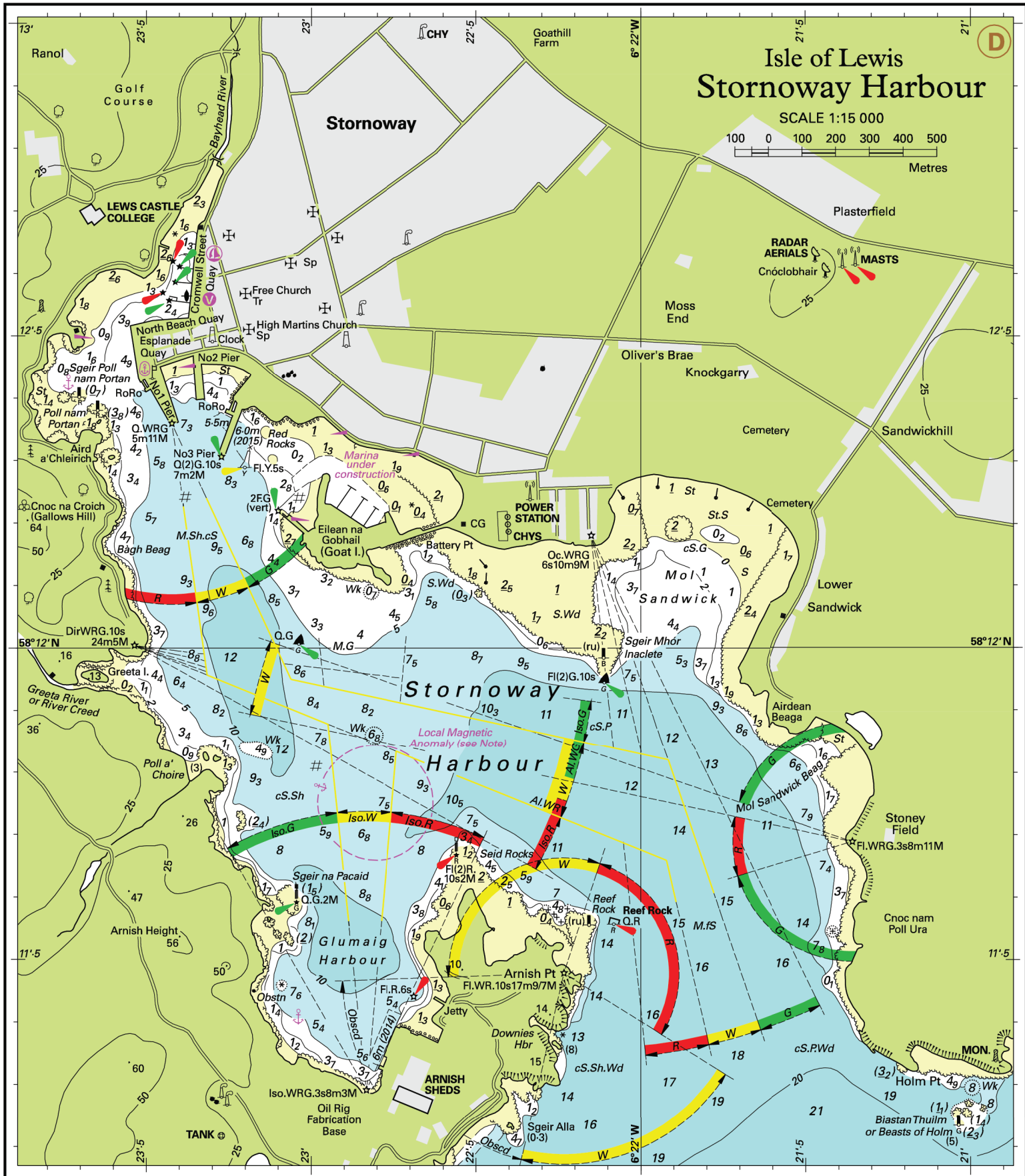
The new harbour has a dredged depth of 2·5m (ILNW 89/24)

26 Scientific Instruments

Insert lgd *Scientific Instruments* in:

57°52'·57N 6°16'·36W

58°23'·68N 6°00'·74W (ILNW 172/24)



Block correction for C67 (Plan D)
ILNW 674/19)