

Imray Correction Notice ICC28-5

20 March 2024

Chart **C28** WGS 84

Edition 2022

Versions available:

New Edition (corrected to September 2022)

Update (corrected to April 2023)

Update (corrected to February 2024)

NOTES

Below is a complete list of corrections issued since the 2022 edition of this chart was published.

Each correction is issued with an ILNW reference number and year.

Corrections are listed chronologically in ascending order.

For Update versions of this chart, please check the bottom left corner of the chart to determine the last applied correction.

Any further corrections will be applicable from that point onwards.

1 **Approaches to Lowestoft**

Insert obstn symbol with assoc lgd *Unexploded Ordnance (2022)* in 52°26'·09N 1°47'·49E (ILNW 459/22)

2 **Aldeburgh Ridge (Main chart & Plan F)**

Insert depth 2.3m and extend 5m contour to enclose in 52°07'·74N 1°37'·69E. Delete depth 3.5m close NW (ILNW 460/22)

3 **Orford Haven (Plan F)**

For detailed information about the River Ore entrance consult the accompanying chartlet (survey 02/23). For further details regarding the latest pilotage information of this area see www.eastcoastpilot.com (ILNW 116/23)

4 **Woodbridge Haven (Main chart & Plan G)**

Move:

RW safewater Lt buoy **Woodbridge Haven** Mo(A)15s to 51°58'·24N 1°23'·86E

G con buoy **Mid Knoll** to 51°58'·67N 1°23'·83E (Plan G)

R can buoy **West Knoll** to 51°58'·82N 1°23'·64E (Plan G)

R can buoy **Knoll Spit** to 51°59'·00N 1°23'·48E (Plan G)

G con buoy **Deben** to 51°59'·05N 1°23'·53E (Plan G)

For detailed information about the River Deben consult the accompanying chartlet (survey 02/23). For further details regarding the latest pilotage information of this area see www.eastcoastpilot.com (ILNW 117/23)

5 **Holm Sand (Plan D)**

Insert depth:

1·4m in 52°29'·68N 1°47'·01E. Delete depth 6·6m close S

1·8m in 52°28'·29N 1°47'·70E

1·4m in 52°28'·05N 1°47'·70E. Delete 6·6m Wk close W and 3·3m depth close S

0·9m in 52°27'·71N 1°47'·58E. Delete depth 2·5m close S

Extend 2m contour of Holm Sand E to enclose above changes (ILNW 118/23)

6 **Harbour Entrance (Plan C)**

Insert depth 2·2m in 52°34'·26N 1°44'·41E

Replace depth:

3·8m with 3·1m in 52°34'·30N 1°44'·40E

4·1m with 3·6m in 52°34'·26N 1°44'·49E (ILNW 122/23)

7 **Woodbridge Haven (Plan G)**

Insert drying height -0·1m enclosed by 0m contour in 51°58'·73N 1°23'·83E (ILNW 198/23)

8 **Sizewell Bank E**

Move Y special pillar Lt buoy Fl(5)Y.20s (2 buoys) PA in 52°12'·60N 1°41'·10E to 52°12'·45N 1°41'·06E (ILNW 203/23)

9 Minsmere Haven & Lowestoft Approaches (Main chart & Plan D)

Artificial nesting structure construction works are in progress, navigate with caution in the vicinity.

Insert Lt star:

ANS 1 Fl.Y.5s3M in 52°14'·29N 1°39'·02E (Main chart)

ANS 2 Fl.Y.5s3M in 52°27'·64N 1°45'·81E (Plan D)

ANS 3 Fl.Y.2·5s3M in 52°27'·72N 1°45'·82E (Plan D) (ILNW 219/23)

10 Aldeburgh Ridge (Main chart & Plan F)

Insert depth 0·9m in 52°06'·84N 1°36'·83E. Extend contour to enclose (ILNW 288/23)

11 Approaches to Lowestoft

Insert overfalls symbol in 52°26'·29N 1°46'·84E (ILNW 146/24)

12 Great Yarmouth N

Move BY N card pillar Lt buoy **N Scroby** VQ from 52°41'·39N 1°46'·47E to 52°41'·56N 1°46'·53E (ILNW 160/24)



Depths in Metres

This chart is a free download
NOT TO BE USED FOR NAVIGATION



Caution

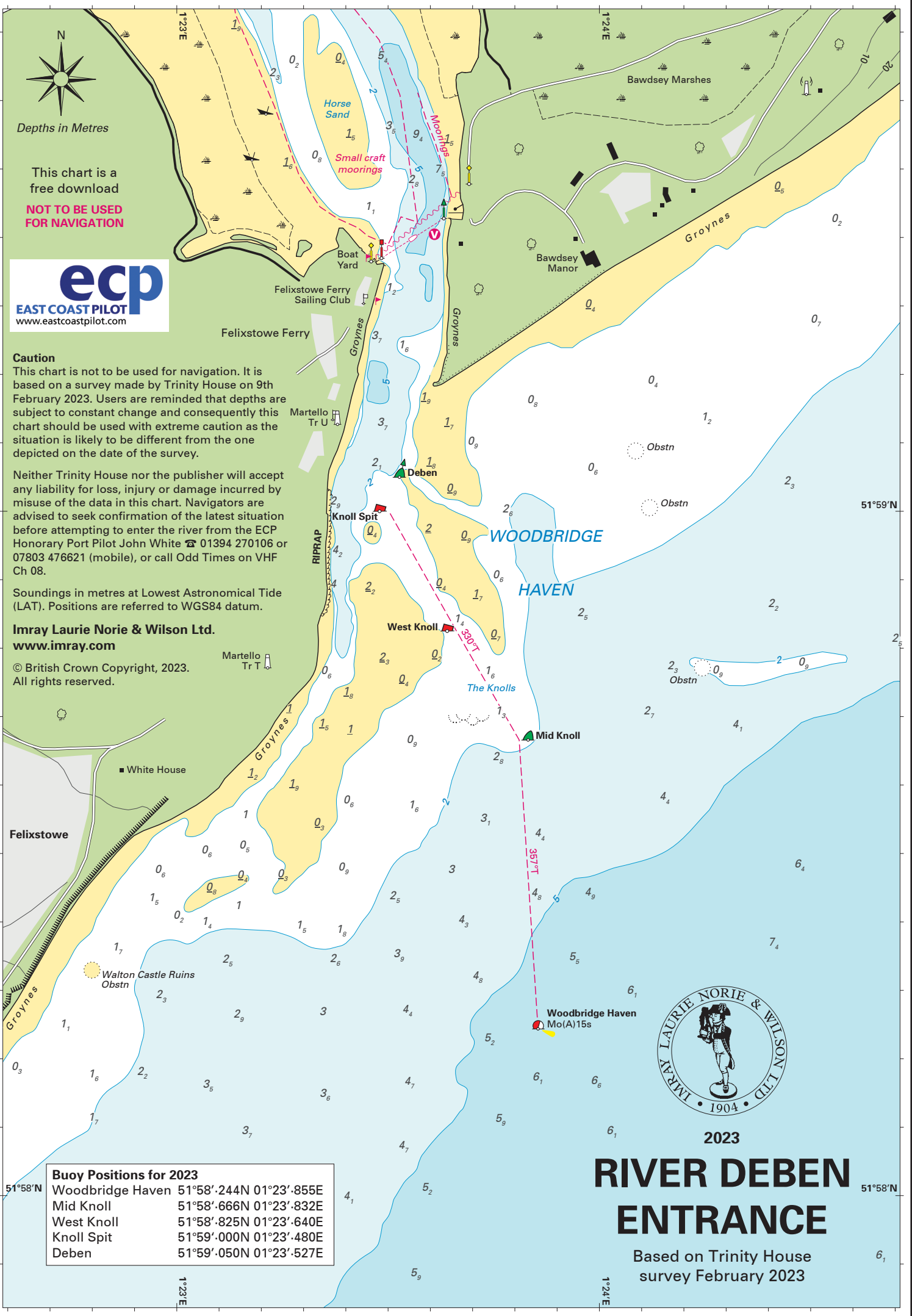
This chart is not to be used for navigation. It is based on a survey made by Trinity House on 9th February 2023. Users are reminded that depths are subject to constant change and consequently this chart should be used with extreme caution as the situation is likely to be different from the one depicted on the date of the survey.

Neither Trinity House nor the publisher will accept any liability for loss, injury or damage incurred by misuse of the data in this chart. Navigators are advised to seek confirmation of the latest situation before attempting to enter the river from the ECP Honorary Port Pilot John White ☎ 01394 270106 or 07803 476621 (mobile), or call Odd Times on VHF Ch 08.

Soundings in metres at Lowest Astronomical Tide (LAT). Positions are referred to WGS84 datum.

Imray Laurie Norie & Wilson Ltd.
www.imray.com

© British Crown Copyright, 2023.
All rights reserved.



Buoy Positions for 2023	
Woodbridge Haven	51°58'.244N 01°23'.855E
Mid Knoll	51°58'.666N 01°23'.832E
West Knoll	51°58'.825N 01°23'.640E
Knoll Spit	51°59'.000N 01°23'.480E
Deben	51°59'.050N 01°23'.527E



2023

RIVER DEBEN ENTRANCE

Based on Trinity House
survey February 2023

51°59'N

51°58'N

1°23'E

1°24'E

Caution

This chart is not to be used for navigation. It is based on a survey made by Trinity House on 8th February 2023. Users are reminded that depths are subject to constant change and consequently this chart should be used with extreme caution as the situation is likely to be different from the one depicted on the date of the survey.

Neither Trinity House nor the publisher will accept any liability for loss, injury or damage incurred by misuse of the data in this chart. Navigators are advised to seek confirmation of the latest situation before attempting to enter the river from the ECP Honorary Port Pilot and Orford Harbourmaster Matt Smy ☎ 07528 092635, or call *Chantry* on VHF Ch 08 (although note that he is based at Orford and may be out of radio range from the river entrance).

Soundings in metres at Lowest Astronomical Tide (LAT). Positions are referred to WGS84 datum.

Imray Laurie Norie & Wilson Ltd.
www.imray.com

© British Crown Copyright, 2023.

All rights reserved.



52°03'N

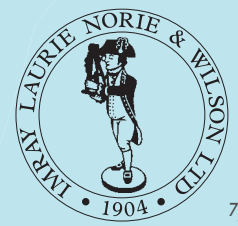
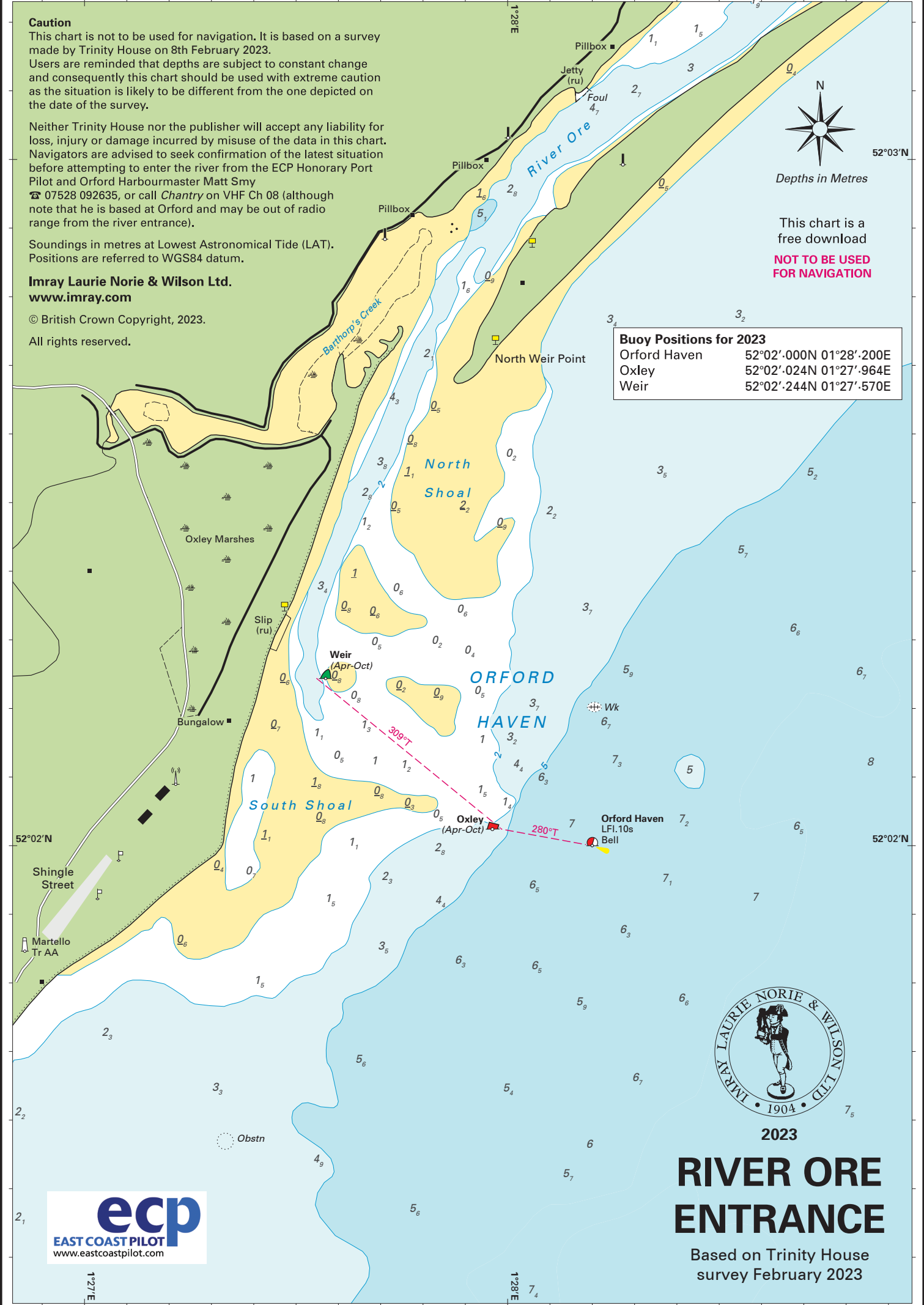
Depths in Metres

This chart is a free download

NOT TO BE USED FOR NAVIGATION

Buoy Positions for 2023

Orford Haven	52°02'.000N 01°28'.200E
Oxley	52°02'.024N 01°27'.964E
Weir	52°02'.244N 01°27'.570E



2023
RIVER ORE ENTRANCE

Based on Trinity House survey February 2023