

Mediterranean France and Corsica Pilot

6th Edition 2017
ISBN 978184623 849 9



Supplement No.3
June 2021

Note: Some of these corrections are now in place in the reprint of October 2021

Caution

Every effort has been made to ensure the accuracy of this supplement. However, it contains selected information and thus is not definitive and does not include all known information on the subject in hand.

The authors and Imray Laurie Norie & Wilson Ltd believe this supplement to be a useful aid to prudent navigation, but the safety of a vessel depends ultimately on the judgement of the navigator, who should assess all information, published or unpublished, available to him/her.

This supplement contains amendments and corrections sent in by a number of cruising yachtsmen and women, in addition to those culled from official sources such as *Notices to Mariners*.

Note where lights have been modified in this text do please remember to alter them on the appropriate plan.

Authors' caution

It must be emphasised that none of the charts, plans or sketch plans shown in this guide should be used for navigation, nor should they be in any way considered as substitutes for the official charts and other nautical reference materials which every vessel is obliged by international law to have on board.

Thanks to everyone who sent in information included in this supplement. We are always happy to receive information via the publishers.

Correct as at June 2021.
© Rod & Lu Heikell

Page 4 Anchoring

There is now a complete ban on yachts >24m anchoring on Posidonia seagrass.

Page 9 Entry formalities

Covid 19

The emergence and spread of a novel coronavirus during 2020 has caused millions to become ill, and tragically, over two million to lose their lives. It has dramatically changed the notions of free movement and cross border travel. Many countries have either closed their borders to non-essential travellers, or require evidence of a negative Covid test to allow entry. Mandatory quarantine is also common. Sailors must check all current restrictions and requirements when moving within and between countries to ensure they remain within the regulations in place.

Page 9

Immigration

Following Brexit, all UK resident passport holders must be stamped into France. Visa-free travel has been agreed within the Schengen Rule where all non-EU visitors are subject to a maximum stay anywhere within the Schengen Area of 90 days in any 180 day period. Longer stays are possible but require a visa. There is much diplomatic work underway to try to help long-term cruisers and second home owners to simplify the process for stays from 90-180 days.

Page 10

Customs – VAT Status of UK yachts

It is understood that EU (and UK) VAT paid British registered yachts which were lying within the EU on 31/12/2020 will continue to be regarded as EU VAT paid. It means that any 'temporary Importation' or transit log should be 'unlimited' and should not be subject to the 18 month rule. Any yachts which do not fall into this category must respect the 18 month rule, or must pay VAT to import the vessel permanently.

It is likely that 2021 will be a period of adjustment as the authorities, and sailors, become accustomed to the new rules.

Page 12

Marine Reserves – Seagrass protection

There is an app available to download for the latest regulations in the Alpes Maritimes and Cote d'Azur regions. Search 'Donia'

Page 13

EHIC

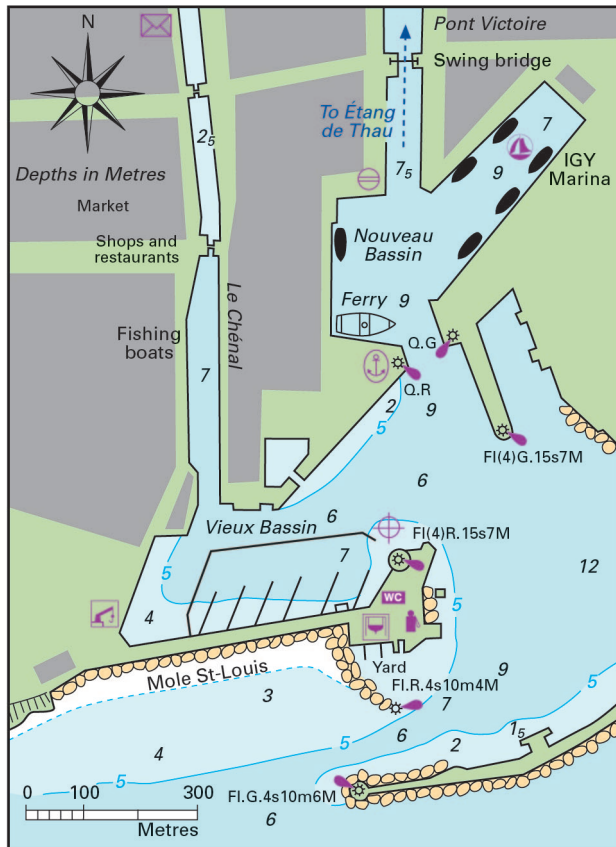
Following Brexit UK citizens can continue to use existing EHIC cards when travelling in the EU. On expiry you may apply for a new GHIC (Global Health Insurance card) which is reported to give the same level of cover through the EU (and possibly other countries like Australia and New Zealand).

Page 101 Port Leucate

Charge band 4.

Page 118 Sète

Amended plan



SÈTE: VIEUX BASSIN AND NOUVEAU BASSIN

⊕ 43°23'.81N 03°42'.11E WGS84

IGY Superyacht Marina now open.
Data 10 berths 24-180m LOA. Depth 8m.
VHF Ch12, 09.
☎ 04 86 11 34 35/36
Email sete@igymarinas.com

Page 142 Port Navy Service

50/120-T travel-hoists. 25-T hydraulic trailer.
www.portnavyservice.com

Page 171 Calanque d'En Vau and Port Pin

Anchoring restrictions remain lifted for vessels <20m.

Page 195 St Pierre des Embiez

Note Dogs on leads are permitted in the nature reserve.

Page 200 Port Pin Rolland

Also the main base of the Catana Group
Maitre du Port ☎ 06 80 68 33 11

Page 247 La Galere

www.portgalere.com

Page 266 Anse de La Garoupe

The bay is buoyed off for swimming during the summer months.

Page 270 Antibes

Port Vauban office ☎ 04 92 91 60 00
Reservation ☎ 04 92 91 60 41
reservation@marina-port-vauban.com
IYCA ☎ 04 92 38 46 44
Email contact-iyca@vauban21.com
www.marina-port-vauban.com

Page 271 Marina Baie des Anges

New 30-year concession began in January 2021.
An overhaul of marina facilities can be expected.

Page 288 Monaco

Work is well advanced on the Portier Cove development and superyacht marina.
Amended plan



MONACO

Page 292

Notes

A new shuttle service is in operation between Monaco and the new marina Carla Del Forte at Ventimiglia.
Portier Cove. Works continue on the new development and the small private marina.

Page 310 Calvi

Email port-plaisance@ville-calvi.fr
www.portplaisancecalvi.fr

Page 315 La Scandola Nature Reserve

Vessels >500-GRT are not permitted in the reserve.

Page 334 Propriano

Laundry facilities.

Page 346 Bonifacio

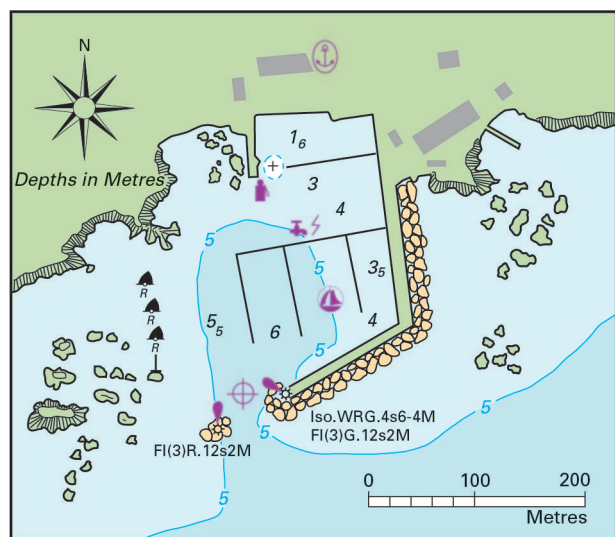
Email info@bonificiomarina.com
www.bonifacio-marina.corsica

Page 351 Cala Lazarina

(Cala Achiarinu)

Page 353 Port Cavallo

Amended plan



PORT DE CAVALLO $\phi 41^{\circ}21'7N$ $\lambda 09^{\circ}15'9E$

Page 355 Golfe de Sant’Amanza

Anchorage

Local small craft moorings and pontoon in the SE corner.

Page 356 Golfe de Santa Giulia

Charge band 4.

☎ 06 79 30 12 22

Page 361 Porto Vecchio

www.port.porto-vecchio.fr

Porto Vecchio Marine pontoon outside the harbour

☎ 04 95 70 22 76

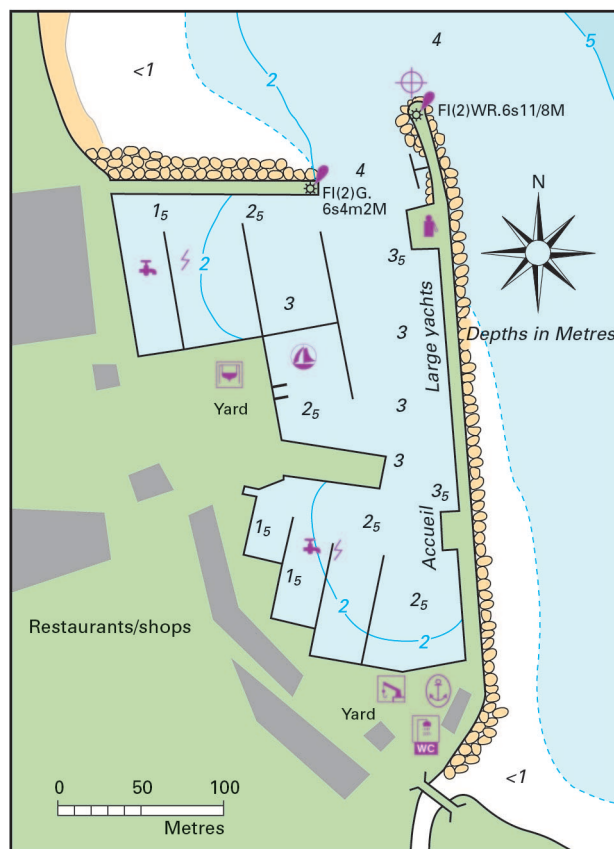
Email info@portovecchiomarine.com

Page 364 Solenzara

Note There are plans to expand the marina to the south of the entrance. No dates are available yet.

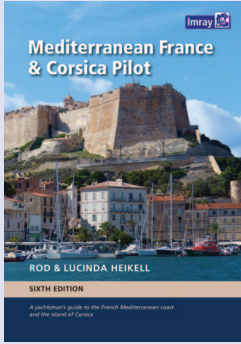
Page 373 Port Macinaggio

Amended plan



PORT DE MACINAGGIO $\phi 42^{\circ}57'7N$ $\lambda 09^{\circ}27'29E$ WGS84

www.portmacinaggio.com



Mediterranean France and Corsica Pilot

6th Edition 2017
ISBN 978184623 849 9

Supplement No.2
March 2018



Caution

Every effort has been made to ensure the accuracy of this supplement. However, it contains selected information and thus is not definitive and does not include all known information on the subject in hand.

The authors and Imray Laurie Norie & Wilson Ltd believe this supplement to be a useful aid to prudent navigation, but the safety of a vessel depends ultimately on the judgement of the navigator, who should assess all information, published or unpublished, available to him/her.

This supplement contains amendments and corrections sent in by a number of cruising yachtsmen and women, in addition to those culled from official sources such as *Notices to Mariners*.

Note where lights have been modified in this text do please remember to alter them on the appropriate plan.

Authors' caution

It must be emphasised that none of the charts, plans or sketch plans shown in this guide should be used for navigation, nor should they be in any way considered as substitutes for the official charts and other nautical reference materials which every vessel is obliged by international law to have on board.

Page 118 Sète

Superyacht marina planned for W side of Nouveau Bassin. Data 12 berths. Max LOA 100m. Depths 7-9m.
www.igymarinas.com
www.igy-sete.com

Page 200 Marepolis

Port Michel Pacha Marina A new marina planned on the site of the old La Seyne ship-building zone. Development currently suspended.

Page 353 Cavallo

Rock less than 1.6m in entrance to innermost basin.

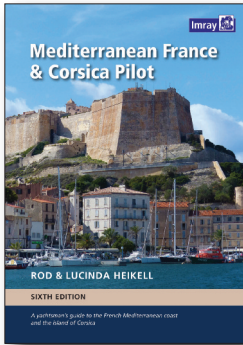
Page 359 Porto Vecchio

A traffic separation scheme runs into the gulf between Roches de Pecorella and Roches de Chiappino.

Thanks to everyone who sent in information.

We are always happy to receive information via the publishers.

© Rod & Lu Heikell
Correct as at March 2018.



Mediterranean France and Corsica Pilot

6th Edition 2017
ISBN 978 184623 849 9

Supplement No.1
Supplement Date: June 2017



Caution

Every effort has been made to ensure the accuracy of this supplement. However, it contains selected information and thus is not definitive and does not include all known information on the subject in hand. The authors and Imray Laurie Norie & Wilson Ltd believe this supplement to be a useful aid to prudent navigation, but the safety of a vessel depends ultimately on the judgement of the navigator, who should assess all information, published or unpublished, available to him/her.

With the increasing precision of modern position fixing methods, allowance must be made for inaccuracies in latitude and longitude on many charts, inevitably perpetuated on some harbour plans. Modern surveys specify which datum is used together with correction figures if required, but older editions should be used with caution, particularly in restricted visibility.

This supplement contains amendments and corrections sent in by a number of cruising yachtsmen and women, in addition to those culled from official sources such as *Notices to Mariners*.

Note where lights have been modified in this text do please remember to alter them on the appropriate plan.

Author's Caution

It must be emphasised that none of the charts, plans or sketch plans shown in this guide should be used for navigation, nor should they be in any way considered as substitutes for the official charts and other nautical reference materials which every vessel is obliged by international law to have on board.

Page 132 Provence

⊕10 1M S of Les Empereurs
43°09'.17N 05°23'.68E WGS84

Page 155 Île Riou

⊕10 1M S of Les Empereurs
43°09'.17N 05°23'.68E WGS84

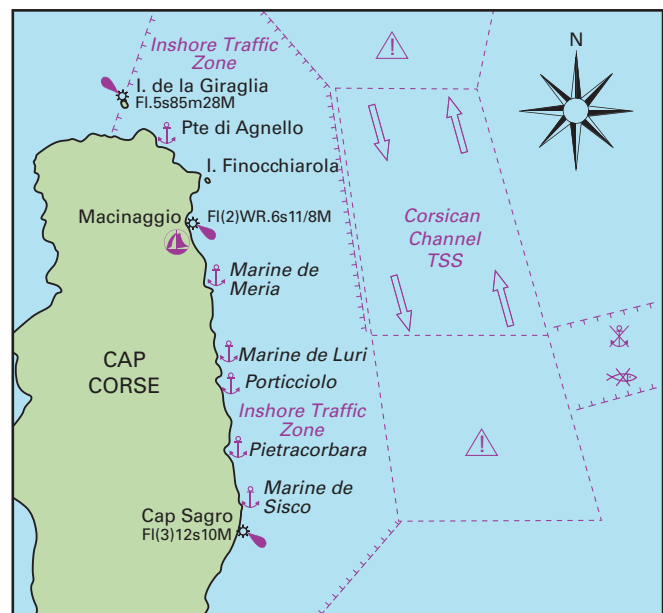
Page 247 La Galère

Above water wreck no longer visible.

Page 255 Port de Cannes

⊕ 43°32'.64N 07°01'.14E WGS84
(100m SSE of SS)

Page 305 Corsican Channel Traffic Separation Scheme



CORSICA

Page 373 Macinaggio - Portu Paul Luigi

New T pontoon being installed (June 2017). Short leg extends 60m E from corner N of travel-lift bay. Long side running 110m N-S parallel with pontoons in N basin. For yachts up to 12m LOA.

Email portu.paul-luigi.macinaggio@orange.fr

Page 374 Corsican Channel Traffic Separation Scheme

As of December 2016 a Traffic Separation Scheme has been established in the Corsican Channel between Cap Corse and Capraia. Yachts must comply with regulations and not impede commercial shipping in this busy passage. See plan above.

Please keep checking this site to ensure you have the latest information.

Acknowledgements

Thanks to all who sent in information for this supplement. As always we are happy to receive any new data via Imray.

© Rod & Lu Heikell
Cowes, June 2017