

Imray Correction Notice

ICC39-2

15 February 2024

Chart C39 WGS 84 Edition 2017

Versions available:

New Edition (corrected to August 2017)

Update (corrected to August 2019)

Update (corrected to February 2021)

Update (corrected to February 2022)

Update (corrected to February 2023)

Update (corrected to February 2024)

NOTES

Below is a complete list of corrections issued since the 2017 edition of this chart was published.

Each correction is issued with an ILNW reference number and year.

Corrections are listed chronologically in ascending order.

For Update versions of this chart, please check the bottom left corner of the chart to determine the last applied correction.

Any further corrections will be applicable from that point onwards.

1 Sauzon (Main chart & Plan A)

Amend range of Lt:

4M to 5M in 47°22'·49N 3°13'·04W

4M to 5M in 47°22'·45N 3°13'·00W

5M to 2M in 47°22'·37N 3°13'·13W (ILNW 529/18)

2 Plateau du Four SW (Correction amended see ILNW 286/19 & 565/19)

Replace no fishing sym. and no anchoring sym. with wind turbine sym. *Floating turbine* FI(3)Y.15s10M (R Lt) plus racon sym. and assoc. lgd AIS in 47°14'·4N 2°46'·5W. Yachtsmen are advised that entry to the restricted area is prohibited. (ILNW 684/18)

3 Presqu'île de Quiberon, Port Haliguen (Main chart & Plan C)

Amend Lt Oc(2)WR.6s10m11/8M to FI(2)WR.6s10m10/7M in 47°29'·36N 3°05'·94W (ILNW 137/19)

4 Port Haliguen (Plan C) (Correction amended see ILNW 264/19)

Amend Lt:

FI.G.2·5s9m6M to FI(2)G.6s10m6M in 47°29'·34N 3°06'·02W

FI.R.4s10m5M to FI.R.12s10m3M in 47°29'·29N 3°05'·97W (ILNW 138/19)

5 Port Haliguen (Plan C)

Amend Lt FI.R.12s10m3M to FI(3)R.12s10m3M in 47°29'·29N 3°05'·97W (ILNW 264/19)

6 Plateau du Four SW (Correction amended see ILNW 565/19)

Amend Lt at floating turbine FI(3)Y.15s10M (R Lt) to Mo(U)Y.15s (R Lt) in 47°14'·4N 2°46'·5W. AIS remains unchanged. (ILNW 286/19)

7 Plateau du Four SW

Amend Lt at floating turbine Mo(U)Y.15s (R Lt) to Mo(U)15s (R Lt) in 47°14'·4N 2°46'·5W. AIS remains unchanged. (ILNW 565/19)

8 Plateau du Four SW

Amend Lt at Y special pillar Lt buoy FI.Y.4s&FI(5)Y.20s to FI.Y.4s in 47°14'·66N 2°46'·57W plus delete assoc. lgd (2 buoys). (ILNW 21/20)

9 Rade de Pénerf

Insert Y Lt superbuoy with upright x topmark ODAS FI(5)Y.20s in 47°27'·60N 2°39'·40W. Delete Y special pillar Lt buoy FI(5)Y.20s (Feb-Oct) close SW (ILNW 39/20)

10 Quiberon

Delete AIS from Lt Dir.Q.G.13m17M in 47°28'·75N 3°07'·16W. Lt characteristics remain unchanged. (ILNW 192/20)

11 Belle Ile E

Replace BYB E card spar buoy **Les Galeres** with BYB E card pillar Lt buoy **Les Galeres** VQ(3)5s in 47°18'·77N 3°02'·76W (ILNW 228/20)

12 Quiberon

Delete racon sym and assoc lgd AIS at Lt Dir.Q.G.5m16M in 47°28'·62N 3°07'·19W (ILNW 398/20)

13 Quiberon S

BRB isolated danger buoy **An Tréac'h** is now lit. Add legend FI(2)10s in 47°27'·92N 3°07'·20W (ILNW 506/20)

14 Baie de Quiberon

Del Racon and assoc lgd AIS from Lt **La Teignouse** FI.WR.4s20m15/11M in 47°27'·44N 3°02'·75W (ILNW 537/20)

15 **Île Hoëdic SE**

Delete racon sym and assoc. lgd AIS from Lt FI(4)15s28m13M in 47°19'·27N 2°50'·09W (ILNW 46/21)

16 **Birvideaux**

Delete racon symbol and assoc. lgd AIS at Lt bn **Birvideaux** FI(2)6s24m10M in 47°29'·15N 3°17'·47W (ILNW 121/21)

17 **Le Tour du Park**

Delete tower symbol (44) in 47°31'·58N 2°39'·13W (ILNW 322/21)

18 **Larmor-Plage E**

Delete WB Bn in 47°42'·41N 3°22'·43W (ILNW 391/21)

19 **La Turballe (Main chart & Plan G)**

Delete Lt FI(4)WR.12s13m10/7M FI(4)WR.12s Main chart) plus assoc. Lt sectors in 47°20'·70N 2°30'·92W (ILNW 569/21)

20 **Île Houat S, Er Gadoérec-a-Vez**

Insert dangerous rock sym. in 47°22'·34N 2°57'·64W (ILNW 665/21)

21 **Approches to Lorient**

Amend depth 1·6m to 1·1m in 47°41'·47N 3°24'·31W
Insert depth 1·4m in 47°40'·83N 3°21'·97W (ILNW 18/22)

22 **Belle Île SW**

Add Lt FI.Y.4s at Y special can buoy **B1** Target in 47°17'·10N 3°16'·43W (ILNW 28/22)

23 **La Vilaine, Pte du Scal**

Delete Lt Q.G.8m4M in 47°29'·66N 2°26'·82W (ILNW 32/22)

24 **La Turballe (Plan G) (correction superseded see ILNW 36/23)**

Insert lgd *Works in progress* centred on 47°20'·66N 2°31'·00W (ILNW 33/22)

25 **Île de Groix SE**

Insert Y special can Lt buoy FI.Y.4s in 47°35'·92N 3°19'·59W (ILNW 34/22)

26 **La Turballe (Main chart & Plan G)**

Main chart

Insert Lt FI(4)WR.15s10/7M in 47°20'·56N 2°30'·86W and add Lt sectors R-328°-W-073°-R

Delete Lt:

DirIso.R in 47°20'·95N 2°30'·85W

DirIso.R in 47°20'·80N 2°30'·87W

FI.G.4s in 47°20'·75N 2°30'·88W

Plan G

Insert block correction centred on 47°20'·74N 2°30'·92W (ILNW 36/23)

27 **Le Palais (Plan B)**

Insert depth 0·3m in 47°20'·74N 3°09'·02W (ILNW 54/24)

28 **Baie de Pont-Mahé W & Île de Belair N**

Insert underwater R:

depth 2m, enclosed by 2m contour in 47°26'·66N 2°30'·60W

depth 1·8m, enclosed by 2m contour in 47°26'·11N 2°30'·04W

Insert rock which covers/uncovers sym. enclosed by dangerline in:

47°26'·69N 2°29'·85W

47°26'·71N 2°29'·66W

Insert legend *Less Water* centred on 47°28'·23N 2°30'·38W (ILNW 55/24)

29 **La Turballe (Main chart & Plan G)**

Amend Lt FI(4)WR.15s10/7M to FI(2)WR.6s10/7M in 47°20'·56N 2°30'·86W (ILNW 56/24)

30 **Approches to Lorient SE**

Insert R con buoy in:

47°40'·25N 3°16'·09W plus lgd *Target (occas)*

47°40'·18N 3°16'·22W (ILNW 63/24)

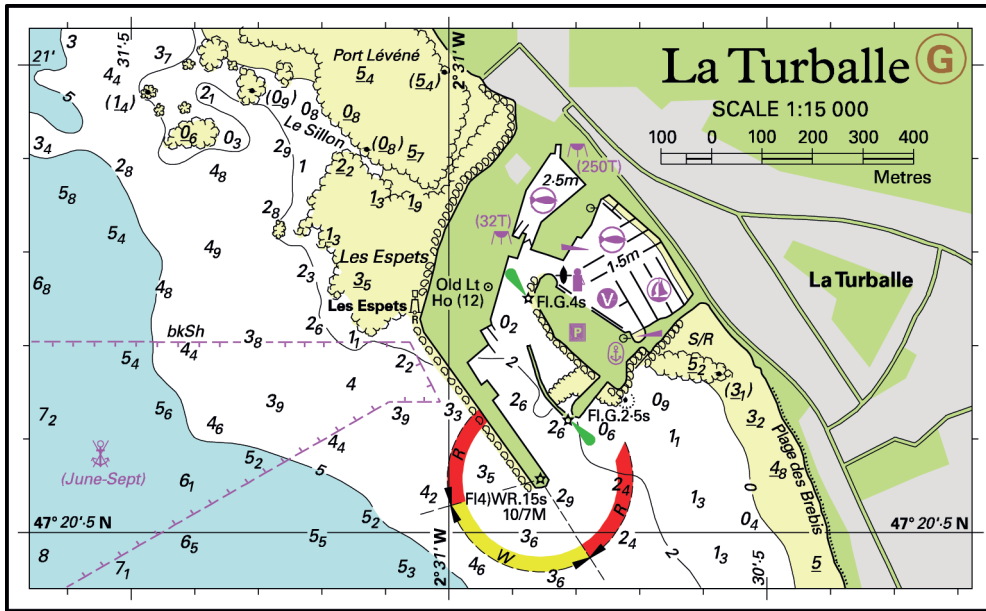
31 **Quiberon SE**

Replace depth 0·8m with rock which covers/uncovers enc. by dangerline and assoc drying height (-0·2m) in 47°27'·69N 3°05'·82W.

Insert depth 3·9m enc. By 5m contour in 47°27'·52N 3°03'·45W. Delete depth 6·4m close W (ILNW 64/24)

32 **Les Poulains**

Insert depth 1·5m in 47°23'·52N 3°16'·28W. Delete depth 2·1m close SE (ILNW 75/24)



Block correction for C39 (Plan G)
ILNW 36/23