

# Imray Correction Notice ICY17B-1

16 February 2024

## Chart **Y17B** WGS 84

*Edition 2022*

*Versions available:*

*New Edition (corrected to September 2022)*

*Update (corrected to April 2023)*

*Update (corrected to February 2024)*

### NOTES

*Below is a complete list of corrections issued since the 2022 edition of this chart was published.*

*Each correction is issued with an ILNW reference number and year.*

*Corrections are listed chronologically in ascending order.*

*For Update versions of this chart, please check the bottom left corner of the chart to determine the last applied correction.*

*Any further corrections will be applicable from that point onwards.*

#### 1 **Barrow Deep & North Knob**

Insert drying height:

-0.2m in 51°32'·56N 1°01'·60E enc. by 0m contour & delete depth 0.6m close E

-0.1m in 51°33'·79N 1°08'·08E extend 0m contour NW to enc.

Insert depth:

1.3m in 51°33'·61N 1°07'·77E extend 2m contour NW to enc. & delete depth 3m close N

0.6m in 51°34'·52N 1°07'·49E enc. by 2m contour (ILNW 470/22)

#### 2 **Whitaker Channel** *(correction superseded see ILNW 20/23)*

Delete Y special purpose pillar Lt buoy FI(5)Y in 51°39'·83N 1°01'·56E (ILNW 8/23)

#### 3 **Sunken Buxey, Approaches to River Crouch**

Insert accompanying block correction centred on 51°39'·76N 1°01'·65E (ILNW 20/23)

#### 4 **Ray Sand**

Insert Y special pillar buoy **Raysand North** in 51°40'·81N 1°00'·57E

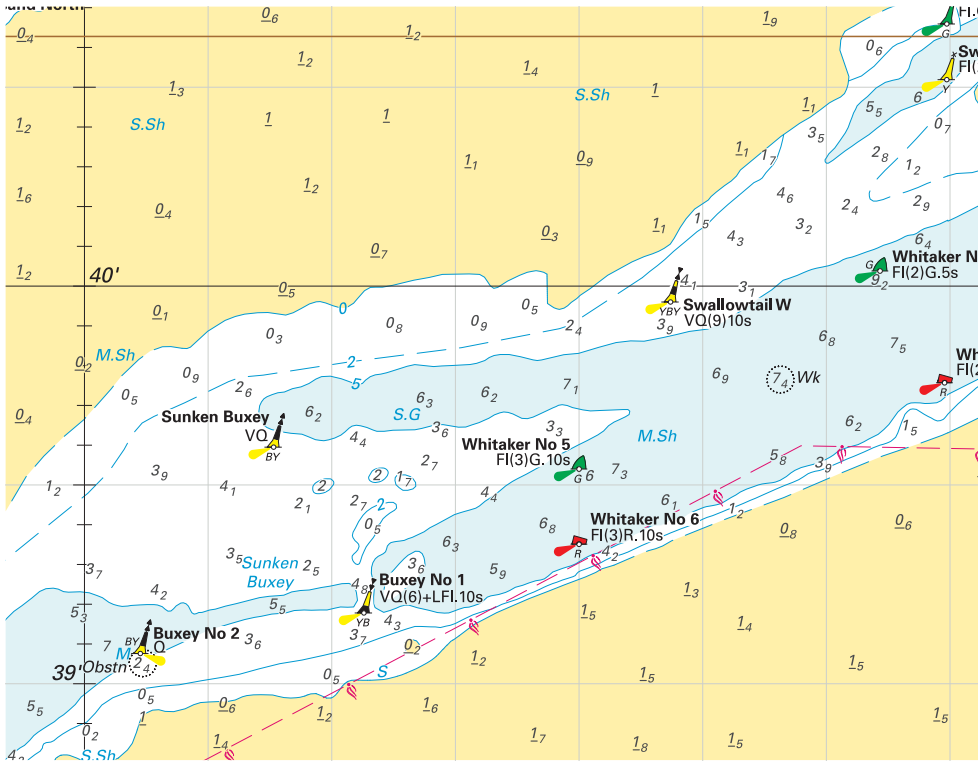
Move Y can buoy **Raysand** in 51°39'·10N 0°59'·50E to 51°39'·84N

1°00'·57E

Delete RW safewater pillar buoy

**Raysand North** in 51°40'·70N 0°59'·50E

**Raysand Middle** in 51°40'·00N 0°59'·00E (ILNW 228/23)



Block correction for Y17B  
 ILNW 20/23