

# East Aegean

2nd Edition 2012  
ISBN 978 184623 374 6



## Supplement No.5

March 2018

**This replaces all previous supplements**

### Caution

Every effort has been made to ensure the accuracy of this supplement. However, it contains selected information and thus is not definitive and does not include all known information on the subject in hand.

The author and Imray Laurie Norie & Wilson Ltd believe this supplement to be a useful aid to prudent navigation, but the safety of a vessel depends ultimately on the judgement of the navigator, who should assess all information, published or unpublished, available to him/her.

This supplement contains amendments and corrections sent in by a number of cruising yachtsmen and women, in addition to those culled from official sources such as *Notices to Mariners*.

Note where lights have been modified in this text do please remember to alter them on the appropriate plan.

### Authors' caution

It must be emphasised that none of the charts, plans or sketch plans shown in this guide should be used for navigation, nor should they be in any way considered as substitutes for the official charts and other nautical reference materials which every vessel is obliged by international law to have on board.

### Page 24 Regulations and documentation

Greece

#### Pleasure Craft Traffic Document (DEKPA)

A new DEKPA (€50) must be obtained (even if you have an existing one from pre 2017). It must be stamped by the Port Police once each year.

Transit log now valid for 18 months with 6 month extension possible.

#### Port dues

(€/ metre)

Vessel length	7-10m	10-15m	Over 15m
Private boats	0.41	0.47	0.55
Charter boats	0.20	0.20	0.20

Alongside berths are subject to a 25% surcharge. All rates are subject to VAT at 24%.

### Page 121-122 Rhodes Boatyard

A1 Shipyard

The basin S of the new Rhodes Marina. 300-ton travel hoist.

Yiannis Tsitses ☎ 22410 01035 / 6955 692030  
tsitses@a1yachting.com

### Page 163 Güllük Egesu Marina

A new marina close S of Güllük harbour.  
VHF Ch16/73

*Data* 350 berths. Depths 3-10m. Max LOA 40m  
Charge band 4.

*Services* Water and electricity (220/380V) at all berths. WiFi. Showers and toilets. Laundry facilities. Fuel quay planned.

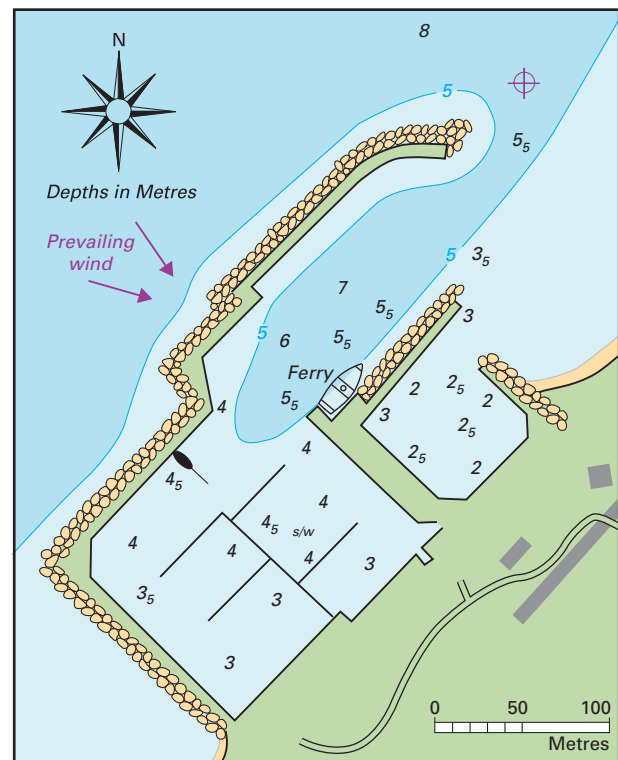
☎ 0545 320 3092  
gulluk@egesumarina.com

### Page 218 Körmen Kairos Marina (see changes to Körmen plan)

Harbour development complete. New quays. Laid moorings and pontoons installed.

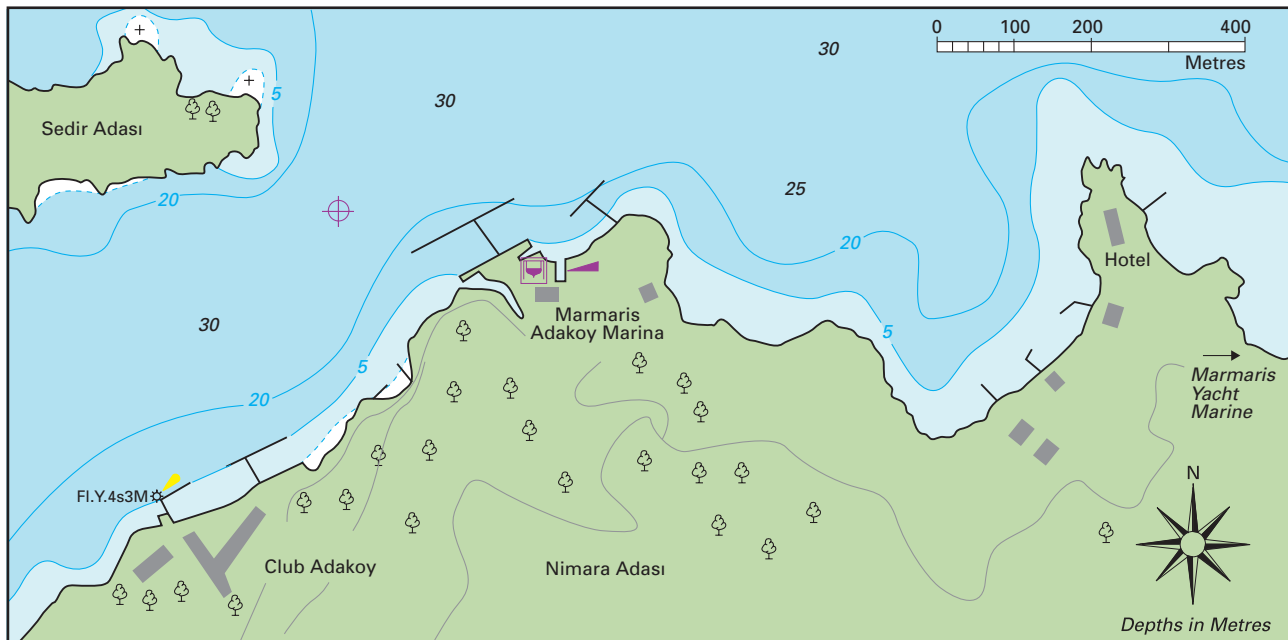
*Data* 250 berths. Max LOA c.50m. Depths 3-6m. Charge band 3.

☎ 0216 573 9977



**KÖRMEN - KARAKOY KAIROS MARINA**

☐ 36°46'.31N 27°37'.01E WGS84



**ADAKOY**

F 36°49'·15N 28°17'·6E

**Page 261 Marmaris Adakoy Marina** (*see new plan*)

VHF Ch 73, 16.

*Data* 120 berths. Depths 3-12m. Max LOA 150m.

Outer berths exposed to wind and swell. Charge band 5.

*Services* Water and electricity (220/380V). Wifi. Showers and toilets. Laundry service.

Fuel can be arranged. 75-ton travel hoist.

☎ 0252 412 5555

*Email* info@adakoymarina.com

www.adakoymarina.com

**Page 315 Kas**

*Moorings* Moorings were laid in 2017, so hopefully crossed anchors in this narrow harbour will be a thing of the past.

*Please keep checking this site to ensure you have the latest information.*

**Acknowledgements**

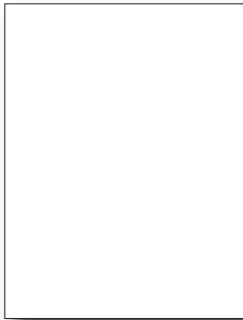
Thanks to everyone who sent in information, especially Mike & Lynda Gregory, Marc Labaume and Bill & Tracey Jones. We are always happy to receive information via the publishers.

© Rod & Lu Heikell

Correct as at March 2018







# East Aegean

Edition 2012  
ISBN 978 184623 374 6



## Supplement No.3

Supplement Date: March 2016

### Caution

Every effort has been made to ensure the accuracy of this supplement. However, it contains selected information and thus is not definitive and does not include all known information on the subject in hand.

The author and Imray Laurie Norie & Wilson Ltd believe this supplement to be a useful aid to prudent navigation, but the safety of a vessel depends ultimately on the judgement of the navigator, who should assess all information, published or unpublished, available to him/her.

This supplement contains amendments and corrections sent in by a number of cruising yachtsmen and women, in addition to those culled from official sources such as *Notices to Mariners*.

Note where lights have been modified in this text do please remember to alter them on the appropriate plan.

### Author's Caution

It must be emphasised that none of the charts, plans or sketch plans shown in this guide should be used for navigation, nor should they be in any way considered as substitutes for the official charts and other nautical reference materials which every vessel is obliged by international law to have on board.

**Page 25 Regulations and Documentation: Turkey**  
Passports must have a minimum validity of 6 months beyond the date of entry into Turkey.

All those who require a visa must apply for an e-visa online in advance of arrival. They can be applied for up to 3 months in advance. Cost for a UK visa is US\$20

<https://www.evisa.gov.tr/en/>

### Page 26 SEPA

#### *Indian Ocean Puffer Fish (Silver-cheeked toadfish or Rabbit nose fish)*

A relation of the renowned Japanese Fugu that has arrived in the Mediterranean via the Suez Canal. The *Lagocephalus Sceleratus* bio-concentrates Tetrodotoxin (TTX), a potentially lethal neurotoxin which causes paralysis and death. Eating as little as 200g of the fish will at the very least make you very ill. The fish can grow up to 1 metre in length, weighing up to 7kg. Mature fish feed on molluscs, preferring sandy bottom habitats between 5-30m depths with sea grass cover. As with all puffer fish it can expand its body by swallowing water. The body does not have scales, and has a noticeable dorsal line, spotty grey brown coloured above, white below. They have four blisteringly sharp teeth, in almost razor form which easily cut through fishing nets.

**Page 69 Ormos Partheni**  
*Agmar Boatyard*  
[www.lerosboatyard.gr](http://www.lerosboatyard.gr)

*Artemis Leros Boatyard*  
New yard on W side of airstrip at Partheni. 38-ton hydraulic trailer.  
☎ 22470 26726  
[www.lerosboatyardltd.com](http://www.lerosboatyardltd.com)

**Page 91 Kos marina**  
☎ 22420 44150

**Page 122 Rhodes Harbour**  
*Rhodes Marina*  
Opened 2015. Basic facilities in place. Reported uncomfortable with strong E winds.  
VHF Ch 71  
Charge band 4/5  
☎ 22414 40970 or 6944 618 141  
Email [info@rhodesmarinas.com](mailto:info@rhodesmarinas.com)

**Page 164 new entry**  
**GÜLLÜK MARINA**  
A new marina project close S of Güllük harbour. The marina is expected to open in spring 2016.

*Data* 350 berths. Depths 3-10m. Max LOA c.30m  
*Berths* Go stern or bows-to where directed. Laid moorings tailed to the pontoons.  
*Shelter* Good shelter at the inner berths.  
*Authorities* Marina staff. Charge band 4.  
☎ 0543 774 3881  
*Services* Water and electricity (220/380V) at all berths. WiFi. Showers and toilets. Laundry facilities.  
*Fuel* Fuel quay planned.

**Page 185 Gumbet**  
Two new pontoons have been laid at the S end of Gumbet Bay. Visitors may find room to berth stern-to on the outer pontoon, or where directed. Laid moorings at some berths. Otherwise ...

**Page 191 Anchorages around Bodrum**  
*Icmeler*  
*Data* (Aganlar boatyard) 40 berths. Max LOA 80m. Depths 3-10m.

**Page 199 new entry**  
**GOKOVA OREN MARINA**  
A new marina open in 2016 on the N side of the bay near Oren village.  
VHF Ch 72 (Setur Oren Marina)  
*Data* 415 berths. Max LOA c.30m. Depths 3-5-8m.  
*Berths* Go stern or bows-to where directed. Laid moorings tailed to the pontoons.

*Shelter* The marina looks to provide good all-round shelter.  
*Authorities* The marina is part of the Setur group. Marina staff. Charge band 3 /4.

*Email* info@gokovaorenmarina.com.tr  
www.seturmarinas.com

*Services* Water and electricity (220/380V) at all berths. WiFi. Showers and toilets. Waste pump-out.

*Fuel* Fuel quay planned.

*Repairs* 100-ton travel-lift planned.

*Other* Mini-market and restaurant planned. It is a stroll around the pebble beach to the fishing harbour. Restaurants and minimarkets behind the beach. The main village lies 2km inland.

#### **Page 208 Keşr**

The barrier is no longer in place. Shallow for much of the inlet.

#### **Page 218 Körmen**

Harbour development almost complete. New quays. Laid moorings and pontoons to be installed.

*Data* 250 berths. Max LOA c.50m. Depths 3-6m.

*Authorities* Harbourmaster. Charge band 3.

#### **Page 224 new entry**

##### **BAĞLARÖZÜ**

⊕ 36°40'·1N 27°25'·2E

A wide shingle beach-lined bay on the E side of Arslani Burnu. It has recently been earmarked for a new marina, as part of government plans to increase tourism in the area. Locals, ecological and environmental groups have led opposition to the plans.

#### **Page 224 Palamut**

Berth stern or bows-to where directed or where there is a space. Moorings have been laid at most berths and the quay is being extended and widened. There are minimum depths around the basin of 2·2-3m.

#### **Page 225 Mesudiye Bükü**

Work due to start April 2016 building a new yacht jetty in Ova Buku.

#### **Page 238 Turgut**

Angel's Peninsular hotel has a jetty under the E headland. Max LOA 50m. Ella's Yacht Club has a pontoon in the SW corner. Max LOA 50m. Another short jetty close N. Reasonable shelter from the prevailing winds in the SW corner but swell does work its way right around into the bay.

Laid moorings at most berths. Water and electricity. Wifi. Shower. Restaurant. (No alcohol at Angel's Peninsular). Charge band 2/3.

Ella's YC ☎ 0252 486 8062

www.ellayachtclub.com

#### **Page 240 Selimiye to Bozburun**

##### **Germe Koyu**

A deep bay opposite Koca Ada. Gulets sometimes use the quay at the head of the bay.

In the bight close W is a short jetty and restaurant offering some shelter from westerly winds.

Kuzbuku Yacht Club VHF Ch 77

☎ 0536 501 7230

*Email* kaptan@kuzbuku.com

#### **Page 251 Çiftlik**

With winds in the southerly quadrant you should leave.

*Alarga Sail* jetty has been closed due to damage from a southerly gale.

*Azmaç* Middle jetty of the five. Laid moorings. Water and electricity. WiFi. Restaurant.

#### **Page 259 Pupa Yat Hotel**

Pupa Yat is now known as Joya del Mar.  
www.joyadelmar.com.tr

#### **Page 261 new entry**

##### **MARMARIS CLUB MARINA**

A new marina close west of Marmaris Yacht Marine.

The approach between Nimara Adasi and Sedir Adasi is deep and free of dangers.

VHF Ch 73, 16.

*Data* c.100 berths. Depths 3-12m. Max LOA c40m.

*Berth* Go stern or bows-to where directed. Laid moorings at all berths.

*Shelter* Good shelter at the inner berths. Outer berths exposed to wind and swell.

*Authorities* Marina staff. Charge band 5.

MCM ☎ 0252 412 5555

*Email* info@mcm.gen.tr

*Services* Water and electricity (220/380V). Wifi. Showers and toilets. Laundry service.

*Fuel* Can be arranged.

*Repairs* 75-ton travel hoist. Workshops. Chandler. Dry berths.

*Provisions* Mini-market in the marina.

*Eating out* Restaurants in the marina.

*Other* Hotel facilities. Rental cars. Swimming pool.

#### **Page 269 Ekinçik**

The breakwater in the NW corner has been extended and 15 yacht berths are available stern-to on the cooperative-run jetty.

*Shelter* Good all-round shelter at berths tucked behind the breakwater.

#### **Page 317 Bayindir**

Alternatively go stern-to at Nuri's beach jetty in the SE corner. 14 berths. Laid moorings. Water and electricity. WiFi. Showers and toilets. Laundry.

Nuri's Beach ☎ 0242 836 3816

*Email* info@nurisbeach.com

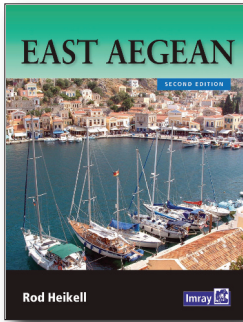
*Please keep checking this site to ensure you have the latest information.*

#### **Acknowledgements**

Thanks to all who sent in information for this supplement. As always we are happy to receive any new data via Imrays.

© Rod & Lu Heikell

Cowes, March 2016



# East Aegean

Edition 2012  
ISBN 978 184623 374 6



## Supplement No.2

Supplement Date: March 2015

### Caution

Every effort has been made to ensure the accuracy of this supplement. However, it contains selected information and thus is not definitive and does not include all known information on the subject in hand.

The author and Imray Laurie Norie & Wilson Ltd believe this supplement to be a useful aid to prudent navigation, but the safety of a vessel depends ultimately on the judgement of the navigator, who should assess all information, published or unpublished, available to him/her.

This supplement contains amendments and corrections sent in by a number of cruising yachtsmen and women, in addition to those culled from official sources such as *Notices to Mariners*.

Note where lights have been modified in this text do please remember to alter them on the appropriate plan.

### Author's Caution

It must be emphasised that none of the charts, plans or sketch plans shown in this guide should be used for navigation, nor should they be in any way considered as substitutes for the official charts and other nautical reference materials which every vessel is obliged by international law to have on board.

### Page 17 Provisions - Camping Gas

In recent years the old Camping Gaz bottles have been phased out and replaced by lurid green Greek gas bottles. The connection is identical to a Camping Gaz fitting, but the bottles will not be accepted to swap for Camping Gaz outside of Greece.

### Page 24 Greek Vessel Tax

A new tax has been introduced for all leisure vessels over 7m, including commercial and charter vessels carrying less than 49 passengers. It is likely that it will be implemented in the 2015 season. The principle points are shown below:

Vessel length	Annual charge
7-12m LOA	€200-400
Over 12m LOA	€100 per metre

- Vessels over 12m may alternatively pay a monthly fee of €10 per metre
- Vessels 'permanently' in Greece may pay the annual tax in advance and obtain a 30% discount
- Vessels stored ashore are not liable until they launch
- No refunds are payable if vessels leave the country

### Page 24 Port Dues, Greece

From August 2014 the charges and collection of port dues have altered. Local agents from the Limeniko Tameio will collect the dues at the quayside.

Where extra facilities are provided (water, electricity, laid moorings) there may be an additional charge. A receipt should be offered as proof of payment. The basic cost for a 12m boat is around €10. Alongside berths are subject to a 25% surcharge. There are discounts for advance payments.

### Page 25 E-Visa, Turkey

Sticker type visa stamps are no longer issued on entry. All those who require a visa must apply for an e-visa online. Cost for a UK visa US\$20 [www.evisa.gov.tr/en/](http://www.evisa.gov.tr/en/)

### Page 25 Turkish Visa Regulations

New visa regulations apply to all tourists on arrival in Turkey from February 2012

- Maximum stay in Turkey is now limited to a maximum of 90 days in a 180 day period (i.e. you must be out of the country for at least 90 days in every 6 month period)
- Multiple entries into Turkey within the 180 day period are permitted on the same visa (as long as the total days spent in Turkey do not exceed 90 days) i.e. the 90 days do not have to be consecutive
- Those who need to stay for longer should apply for a Turkish Residence permit (see Turkish Waters and Cyprus Pilot or Mediterranean Almanac for details).

### Page 26 Blue Card

From 2014 the scheme was extended to all parts of the Mediterranean and Aegean coasts, and from 2015 the Black Sea coast. The system is yet to be fully operational, but all vessels should obtain and carry the Blue Card whilst in Turkish waters. Any yachts seen to be polluting with black, grey or bilge water will be subject to fines. Check locally to get advice on pump-outs, grey water and washing down. The coastguard are making some inspections. They will want to see the blue card, and evidence of a recent pump-out.

### Page 36 Navtex

Limnos	L	Samos Sea, Saronikos, S Evoikos, Kafiraeas Strait, Central Aegean, NW Aegean, NE Aegean, Thrakiko, Thermaikos
Iraklion	H	Kithera Sea, SW Kritiko, SE Kritiko Ierepetra, Kastellorizo Sea, Rodos Sea, Karpathio, W Kritiko, E Kritiko, SW Aegean, SE Aegean Ikario, Samos Sea
Izmir	I	Aegean, Jason
Antalya	F	Taurus
Cyprus	M	SE Kritiko, Delta, Crusade, Taurus

**Page 37 Turkish Weather forecasts**  
Turkish State Meteorological Service

<http://212.175.180.126/DTS/sea.php>

Or search “weather forecast along sea route”

Simple clear graphic for Mediterranean and Black Sea.  
Zoom facility and planning options. 5 day spot forecasts.

**Page 104 Palon**

The harbour has silted badly over the winter and is currently only useable by catamarans or similar shoal draught craft. The harbourmaster is planning to get a dredger as soon as possible, but until then is unusable for most yachts.

**Page 106 Tilos to Rhodes plan**  
Nisiros Ak Katsouni Fl(2)9s28m12M

**Page 158 Mandalya Marina**

The quay and pontoon is in place. Most facilities will be available in 2015.

**Page 160 Gök Limani - Port Iasos Marina**

A new 'boutique' marina in the NW corner of Gok Limani. The pontoons lie off the W side of Gok Limani.

VHF Ch73 (callsign *Port Iasos Marina*)

*Mooring* 150 berths. Max LOA 25m. Depths 2-9m. Go stern or bows-to where directed. Laid moorings tailed to the pontoons. Good shelter from the prevailing winds. Two offset pontoons near the entrance to Gok Limani improves shelter from southerlies.

Marina staff. Charge band 4.

Port Iasos ☎ 0541 760 4241 *Email* info@portiasos.com

**Facilities** Water and electricity at all berths. WiFi. Showers and toilets. Fuel by mini-tanker. A fuel quay is planned. Restaurant and mini-market in the marina. Boat shuttle to Gulluk. Taxi.

**Page 163 Güllük**

There is a project to develop a new 'marina' here, but further details are yet to be available.

Another marina project is planned for the bay close S of Güllük. Further details will be included in future supplements.

**Page 199 Gokova Oren Marina**

A new marina will be open in 2015 on the N side of the bay near Oren fishing harbour.

*Data* 500 berths. Max LOA c.30m. Depths 2-6m.

**Facilities** All facilities, waste pump-out, fuel, travel-lift, mini-market and restaurant planned. It is a stroll around the pebble beach to the fishing harbour. Restaurants and minimarkets behind the beach. The main village lies 2km inland.

*Email* info@gokovaorenmarina.com.tr

**Page 218 Kormen - Datca Karakoy Marina**

The old harbour has been extended and modified such that the new larger E basin is now a marina. Major construction is completed, and moorings have been laid. Pontoons can be expected in 2015.

*Data* 250 berths. Max LOA c.50m. Depths 3-6m.

**Facilities** All the usual facilities can be expected. Few local facilities except a restaurant nearby that serves the Bodrum ferry traffic.

**Page 224 Palamut**

Moorings have been laid at berths on the NW quay. Other parts of the quay have been widened. Depths around the basin 2-2-3m. Water and electricity at most berths.

**Page 225 Mesudiye Bükü (Ova Bükü)**

The jetty has been removed. The bay lies within a Datca-Bozburun Special Environmental Area, and as such it seems unlikely that it will be replaced easily.

**Page 228 Datça**

A buoyed swimming area limits anchoring in the bay SW of the harbour.

**Datca Marina**

Work has started on the new marina close S of Datca harbour, although latest reports suggest the project has stalled.

**Page 261 Anchorages around Marmaris Bay**

**Adakoy Marmaris Marina**

A recently completed marina on the site of the former Pruva Marina boatyard. Most facilities are available.

**Aquarium Marina**

Between Adakoy Marina and Yat Marine is a charter base known as the Aquarium. Berths may be available to visitors if there is room. Water and electricity. Further hotel facilities ashore.

**Page 293 Village Marina, Gocek**

VHF Ch 69

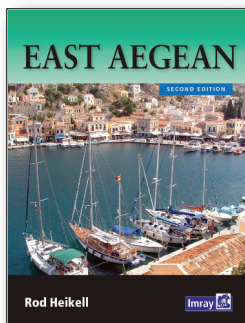
*Please keep checking this site to ensure you have the latest information.*

**Acknowledgements**

Thanks to all who sent in information for this supplement. As always we are happy to receive any new data via Imrays.

© Rod & Lu Heikell  
Cowes, March 2015





# East Aegean

Edition 2012  
ISBN 978 184623 374 6

## Supplement No.1

Supplement Date: March 2013



### Caution

Every effort has been made to ensure the accuracy of this supplement. However, it contains selected information and thus is not definitive and does not include all known information on the subject in hand.

The author and Imray Laurie Norie & Wilson Ltd believe this supplement to be a useful aid to prudent navigation, but the safety of a vessel depends ultimately on the judgement of the navigator, who should assess all information, published or unpublished, available to him/her.

This supplement contains amendments and corrections sent in by a number of cruising yachtsmen and women, in addition to those culled from official sources such as *Notices to Mariners*.

Note where lights have been modified in this text do please remember to alter them on the appropriate plan.

### Author's Caution

It must be emphasised that none of the charts, plans or sketch plans shown in this guide should be used for navigation, nor should they be in any way considered as substitutes for the official charts and other nautical reference materials which every vessel is obliged by international law to have on board.

### Page 24 Ports of Entry

Kalimnos (summer only)

### Page 25 Turkish Visa Regulations

- New visa regulations apply to all tourists on arrival in Turkey from February 2012
- Maximum stay in Turkey is now limited to a maximum of 90 days in a 180 day period (i.e. you must be out of the country for at least 90 days in every six month period)
- Multiple entries into Turkey within the 180 day period are permitted on the same visa (as long as the total days spent in Turkey do not exceed 90 days) i.e. the 90 days do not have to be consecutive
- Those who need to stay for longer should apply for a Turkish Residency permit (see below).

Recent reports from the UK Foreign and Commonwealth Office (FCO) suggest that the procedure for obtaining a short-term (up to the length of the transit log) residence permit for UK yacht owners has been simplified to facilitate longer stays in Turkey. In practice the system is not complicated, and marina staff are usually knowledgeable and helpful.

### Residence permit costs (2013)

Permit validity	Cost (US\$)
1 month	25
2 months	30
3 months	35
6 months	50
1 year	80

### Requirements for each applicant

- **Passport police** Visit the local office with the documents listed below
- **Application form** The form can be downloaded from the UK Turkish Embassy website. It can either be filled in by hand or typed but needs to be printed out 'double sided' (that is both pages on one sheet of paper). It speeds things up if you take a completed form with you
- **Transit Log** plus a copy
- **Boat papers** SSR for a UK boat plus a copy. A Turkish translation may be asked for. Alternatively a copy of the Bill of sale as well as the SSR copy may suffice
- **Passport** plus a copy of the passport page with your photo and of the page with last Turkish entry stamp. The passport must be valid for at least three months longer than the expiry date of the permit
- **Photographs** Four recent passport sized photographs
- **A residence permit book** (Blue book) Cost US\$80 in 2012
- **Payment** A bill is issued which is paid at the tax office. The passports are held until a receipt is produced.

### Page 26 Holding tank regulations for yachts in Greek and Turkish Waters

The EU wide Recreational Craft Directive makes only a recommendation for new boats to have holding tanks, or space for holding tanks, but for now at least, there is no regulation to fit them. (Although an amendment has been tabled to make it mandatory in new boats from 2013.) This lags behind some EU countries though.

Since 1985 it has been law in Greece for 'professional yachts' i.e. charter yachts to have holding tanks fitted. I believe that in 2004 Spain and Greece made it law for all new boats to be fitted with holding tanks. The minimum size of tank in Greece is 10 litres per person (for the maximum number allowed on the yacht).

i.e. a yacht licensed to carry six people must have an 60 litre holding tank.

There is still no specific law for holding tanks on older private yachts, although there are places in Spain and France where yachts without holding tanks are banned. In practice those without holding tanks are incapable of complying with pollution laws.

Pollution laws are, legally speaking, a separate matter from holding tanks. They are linked to EU directives on coastal seawater quality, and concentrate mainly on land

based sources. It goes along the lines that all untreated sewage discharge in coastal and inshore waters is prohibited, but there is precious little detail with regard to yachts. So there is some disconnect between the EU laws on pollution and national requirements for yachts that fall outside the MARPOL regulations (which only apply to vessels over 200GRT, or those carrying over 15 passengers). In Greece, the coastguard or port police can fine anyone found to be polluting, which can include fuel, oily bilge water, or black water – something obvious in any case. In a ‘clean’ harbour where people swim, quite rightly those who are seen to pollute will be pursued. The authorities are bound to respond to any complaints of pollution of any type, but the response to complaints will vary from place to place.

Discharge of holding tanks should be made at least 6M offshore when making at least 4 knots, but in open water 2 or 3M off is better than in enclosed water. Fines depend on the type of pollution, whether it is deemed to be accidental or deliberate, and the location. An accidental diesel discharge in Greece recently attracted a fine of €500. This is the minimum fine (€5,000 is the maximum). This fine does not limit the liability of the polluter who may also be taken to court to answer for additional costs such as clean up costs, etc.

I have always been at pains to point out the unsociable nature of pumping your toilet when in bays or harbours in the Mediterranean. I find it amazing that there are still some yachtsmen who disagree with this and are happy to pump out in a pristine bay where people swim. We all have a responsibility to preserve the marine environment and if that means a trip offshore to pump out then so be it. Debating whether or not the sewage is a dangerous pollutant I think is irrelevant – it just isn’t nice! In the enclosed and busy waters of the Mediterranean I believe that having a holding tank, and using it, should be mandatory in coastal waters. Regardless of what the local regulations are. There is no doubt that EU and UN regulations regarding sewage pollution are improving the water quality throughout the Mediterranean, and although there is still a long way to go, I believe their efforts should be wholly supported by sailors.

Grey water is another matter. Arguably more dangerous to the environment, but far more difficult to store on board, grey water management is a tricky subject. My solution is to use eco-branded detergents on board so that pollution from damaging phosphates and other chemicals is minimised. I really can’t see how a system for grey water collection and discharge can be practically achieved in small to medium sized yachts. I have never heard of any fines being imposed in Greece for discharging grey water.

### Blue Card Update

As of spring 2013, the situation is as follows:

A Blue Card should be obtained from a marina as soon as a vessel enters Turkish waters. The Blue Card will need to be seen before a transit log will be issued. The card should be carried on board at all times. Card readers may be working in some harbours, but the information kept on it is very limited. No pump-out facilities have the capability of measuring how much black water is removed from a yacht. They can record the frequency of the pump-outs. It is recommended that yachts staying in the Fethiye-Göcek region regularly (every week) visit a pump-out station. Elsewhere it does not seem to be necessary. In any case yachts should not pump out black water except when well offshore.

At present there are no specific requirements for yachts to collect grey water. In most marinas you will see boats being washed down using detergents, and around the bays many people use cockpit showers without problems, but any yacht found discharging excessive detergent or oily water will likely attract attention. Use eco-detergents which are widely available at most supermarkets.

### Page 35 Greek VHF Forecast Channels

NE Aegean	23, 60
Central Aegean	01, 25, 85
SE Aegean	03, 23, 24, 63

### Page 50 Ay Yeoryios

Alternatively go bows-to on the short quay on the N shore. To the W of this quay is a sloping rock plateau where several bollards have been laid into concrete. A yacht can also anchor and take a long line ashore to one of these bollards.

### Page 160 Port Iasos Marina

A new ‘boutique’ marina in the NW corner of Gok Limani. The pontoons lie off the W side of Gok Limani. VHF Ch 73 (callsign *Port Iasos Marina*)

### Mooring

Go stern or bows-to where directed. Laid moorings tailed to the pontoons. Good shelter from the prevailing winds. Strong southerlies may make some berths uncomfortable. Marina staff. Charge band 4.

Port Iasos *Email* info@portiasos.com

### Facilities

Water and electricity at all berths. Wi-Fi. Showers and toilets. Fuel by mini-tanker. A fuel quay is planned. Restaurant and mini-market in the marina. Boat shuttle to Gulluk. Taxi.

### Page 261 Adaköy Marmaris Marina

A recently completed marina on the site of the former Pruva Marina boatyard. Most facilities are available.

### Aquarium Marina

Between Adakoy Marina and Yat Marine is a charter base known as the ‘Aquarium’. Berths may be available to visitors if there is room. Water and electricity. Further hotel facilities ashore.

Please keep checking this site to ensure you have the latest information.

### Acknowledgements

Thanks to all who sent in information for this supplement. Thanks as always to all RCC and CA members for sending in updates. Clare Georgy at Imray knocked this supplement into shape. The mistakes, though, will be ours.

As always we are happy to receive any new data via Imrays.

© Rod & Lu Heikell, London, February 2013