

# Ionian

9th Edition 2017  
ISBN 978 184623 868 0



## Supplement No.1

March 2018

### Caution

Every effort has been made to ensure the accuracy of this supplement. However, it contains selected information and thus is not definitive and does not include all known information on the subject in hand.

The authors and Imray Laurie Norie & Wilson Ltd believe this supplement to be a useful aid to prudent navigation, but the safety of a vessel depends ultimately on the judgement of the navigator, who should assess all information, published or unpublished, available to him/her.

This supplement contains amendments and corrections sent in by a number of cruising yachtsmen and women, in addition to those culled from official sources such as *Notices to Mariners*.

Note where lights have been modified in this text do please remember to alter them on the appropriate plan.

### Authors' caution

It must be emphasised that none of the charts, plans or sketch plans shown in this guide should be used for navigation, nor should they be in any way considered as substitutes for the official charts and other nautical reference materials which every vessel is obliged by international law to have on board.

### Page 13

A new summer ferry service launches in May 2018 linking Corfu, Paxos, Levkas (Vasiliki), Ithaca (Pis'Aitou), Cephalonia (Sami), and Zákynthos.

Southbound journeys: Mon, Wed, Fri.

Northbound: Tue, Thur, Sat.

Corfu	0800	Zákynthos	0900
Paxos	1000	Cephalonia	1130
Levkas	1400	Ithaca	1230
Ithaca	1500	Levkas	1430
Cephalonia	1600	Paxos	1730
Zákynthos	1800	Corfu	1930

### Page 30

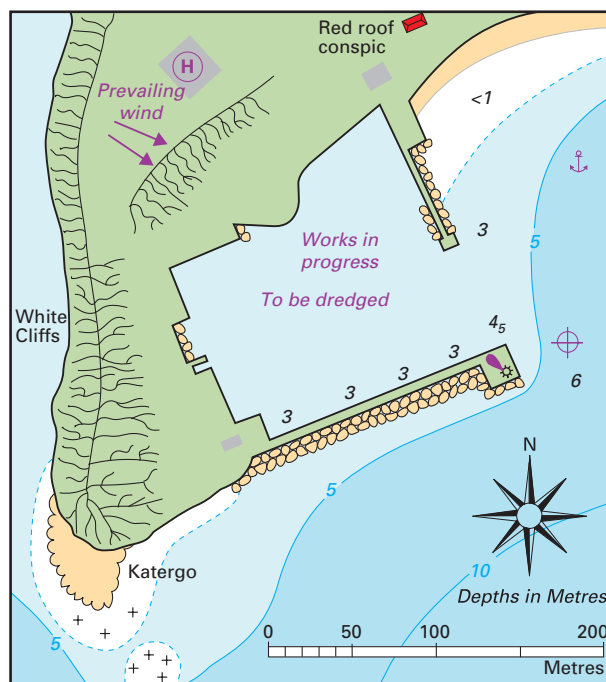
#### Traffic document (DEKPA)

A new DEKPA (€50) must be obtained (even if you have an existing one from pre-2017). It must be stamped by the Port Police once each year.

Transit log now valid for 18 months with 6 month extension possible.

### Pages 67 & 68 Nisos Erikoussa (see changes to plans)

New south breakwater with quay. Basin to be dredged. Works in progress 2017/18.

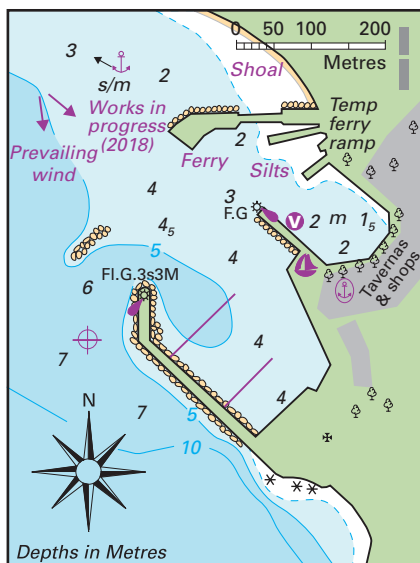


#### LIMIN ERIKOUSSA

⊕39°52'.62N 19°34'.89E WGS84

**Page 141 Vasiliki** (see changes to plan)

Care needed of uneven depths and silting near the entrance to the inner harbour. Work in progress on the harbour development project. Keep an eye out for barges and cranes moving ballast for breakwater extension.



**VASILIKI**  
⊕38°37′.46N 20°36′.24E WGS84

**Page 235 Corinth canal**

A rockfall and landslide in February 2018 closed the canal. Due to re-open after fifteen days (mid-March). Contact the canal authority before booking.

*Please keep checking this site to ensure you have the latest information.*

**Acknowledgements**

Thanks to everyone who sent in information, especially Mike & Lynda Gregory, Marc Labaume and Bill & Tracey Jones. We are always happy to receive information via the publishers.

© Rod & Lu Heikell  
Correct as at March 2018