

Italian Waters Pilot

9th Edition 2015
ISBN 978 184623 599 3



Supplement No.3

March 2018

This replaces all previous supplements

Caution

Every effort has been made to ensure the accuracy of this supplement. However, it contains selected information and thus is not definitive and does not include all known information on the subject in hand. The authors and Imray Laurie Norie & Wilson Ltd believe this supplement to be a useful aid to prudent navigation, but the safety of a vessel depends ultimately on the judgement of the navigator, who should assess all information, published or unpublished, available to him/her.

With the increasing precision of modern position fixing methods, allowance must be made for inaccuracies in latitude and longitude on many charts, inevitably perpetuated on some harbour plans. Modern surveys specify which datum is used together with correction figures if required, but older editions should be used with caution, particularly in restricted visibility.

This supplement contains amendments and corrections sent in by a number of cruising yachtsmen and women, in addition to those culled from official sources such as *Notices to Mariners*.

Note where lights have been modified in this text do please remember to alter them on the appropriate plan.

Authors' caution

It must be emphasised that none of the charts, plans or sketch plans shown in this guide should be used for navigation, nor should they be in any way considered as substitutes for the official charts and other nautical reference materials which every vessel is obliged by international law to have on board.

General note

An Italian maritime law, not often enforced, requires all vessels to call ahead (usually to the Guardia Costiera) to obtain permission to enter a harbour. Most likely to be enforced where pleasure boats must enter a port where commercial vessels may be manoeuvring. Harbours where this practice appears to be being enforced include: Trapani, Siracusa and Reggio di Calabria.

Page 90 Porto Venere

Delete all references to *Marina Misenti* and replace with *Porto di Porto Venere* (VHF channel, legend on plan, mooring data, contact details)

Page 102 Useful waypoints

⊕5

0.5M S of S end of Capraia

42°59'.62N 09°48'.64E WGS84

Page 105 Porto di Capraia

Mooring

Berth Call ahead to arrange a berth or a mooring. Berth where directed. A rib will assist in picking up a mooring (fore and aft lines). Charge band 5/6.

Anchorage ...in 10-15m.

Facilities Limited provisions. No bank.

Page 111 Esaom CESA

The entrance to Esaom is obscured by ferries until you are almost up to it.

Page 114 Rio Marina

General

Replace S with N in text... 'to the N of the port.'

Page 117 Marina di Campo

Mooring

Berth Delete: Laid moorings at most berths. Replace with: The area off the quay is fouled with old moorings. Trip line recommended.

Page 119 Marciana Marina

Mooring

Berth Delete sentence starting: If you have to...

Replace with: Anchoring is prohibited throughout the harbour, but is tolerated out beyond the outer moorings.

Page 124 Other anchorages

Add at end of paragraph: There is a steep drop-off in both bays from a narrow shelf around the coast.

Page 164 Riva di Traiano Marina

Conspicuous The tower to the N of Civitavecchia is conspicuous from every direction. The marina breakwater and the control tower will be seen when closer in.

Page 167 Fiumicino bridge opening times
Mon/Thur/Fri/Sat 0900, 2000
Sun 0900, 1400, 2000

Page 174 Anzio
VHF Ch74.

Page 175 Nettuno Firing Range
VHF Ch13.
Not always noted on Navtex.

Page 194
Delete all reference to Marina Vigliena.

Page 195
(after Salerno)
Note From the Canal di Procida right across the Bay of Naples, you can expect lumpy, uneven seas, even in calm weather. Currents and upwellings are partly to blame, but wash from ferries, trip boats and speed boats exacerbate things, especially around Procida, Capri and Sorrento.

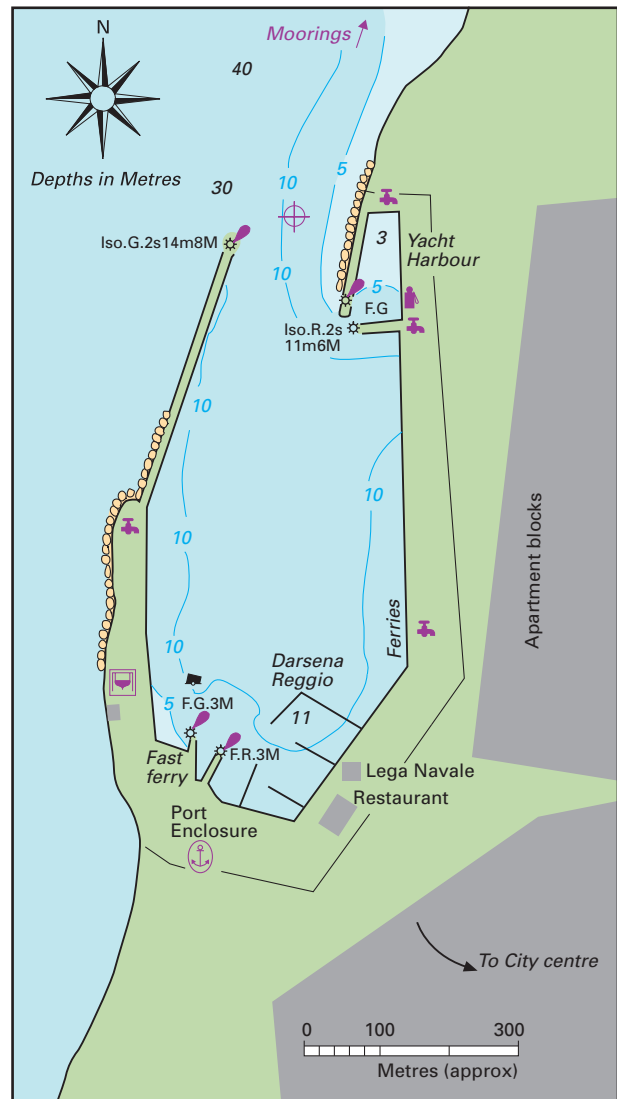
Page 195
Insert fish farm on plan close S of 10m legend off Aquamorta.

Page 204 Marina Vigliena
Delete plan.
Delete all text and replace with:
A marina project that appears to have been replaced by an extension to the commercial docks.

Page 207 Castellamare di Stabia
VHF Ch13 for Stabia Main Port.
Data Stabia Main Port (superyacht berths up to 250m LOA)

Page 208 Castellamare di Stabia (cont.)
Main Port ☎ 344 120 6383
info@stabiamainport.com

Page 250 Reggio Di Calabria (see plan)
Data Max LOA 40m.
Berth Delete: ...on the outer pontoon.
Authorities Delete existing contact and replace with:
Darsena Reggio ☎ 0965 47914
Fuel On the quay in the N basin. Contact Darsena Reggio.



REGGIO DI CALABRIA
☎ 38°07'·70N 15°39'·00E WGS84

Page 303 Olbia Town
2. Circolo Nautico Olbia Small friendly private club.
5. Isola Bianca Delete pink buoys. Add: Sardinia Yacht Services, yacht agents: Offices in Porto Cervo, Olbia, Cagliari.
☎ 0789 906021
info@sardiniayachtservices.it

Page 309 La Caletta
Berth Delete: It is reported ...
The outside of the T-pier is for transit vessels who do not require facilities, although it is not suitable with any S-SE winds.

Page 367 Capo d'Orlando Marina (see plan)

This new marina on the E side of the cape opened in 2017.

Delete dangers and note.

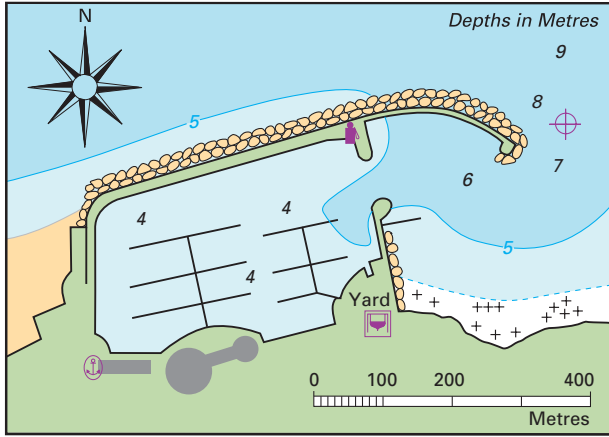
Data 550 berths. Max LOA 40m. Depths 3-5m.

Shelter Reasonable all-round shelter. Strong winds from any direction may make some berths uncomfortable.

☎ 0941 964 512

info@capodorlandomarina.it

Facilities 110-ton travel-lift. Work continues on the infrastructure ashore.



CAPO D'ORLANDO MARINA

☉38°09'.48N 14°46'.81E WGS84

Page 386

Useful website and app for Messina Strait tides

www.correntidellostretto.it

Page 396 Marina di Brucoli

Pontoons in place in summer only. Some doubt over future operation. Check before arrival.

Page 435 Rocella Ionica

By night Delete: See below. Replace with:

Call ahead to advise of your ETA.

VHF Call sign *Rocella Marina*.

Services Delete: Water near ... to be introduced.

Fuel On the end of the fishing boat pier.

Repairs 50-ton crane.

Page 439 Capo Colonne

Moorings now in poor condition and not to be relied on.

Page 441 Cirò Marina

Remove Giovanni Tradico from contacts

Page 473 Msida Marina

Security (24/7) ☎ 7933 7249

Page 475 Roland Marina (previously Sandy Yacht Marina)

Pontoons in place.

VHF Ch13

☎ 2099 5245 / 9947 8678

info@roland-marina.com

Page 476 Sa'Maison Marina

Now Marina di Valetta. Opened 2017.

VHF Ch13

Data 250 berths. Max LOA 45m. Depths 3-10m.

Shelter An oversized wave-breaker pontoon has been installed, which promises to afford good shelter.

☎ 7944 4013 / 9944 2122.

info@marinadivaletta.com

Facilities Services Water and electricity. Shower and toilet block. Waste pump-out.

General Part of the Azimut/Benetti group who also run marinas in Varazze, Viareggio and Livorno.

Shoreside development continues at this smart new marina. It remains to be seen how good the wave-breaker is at protecting the berths from the *gregale*.

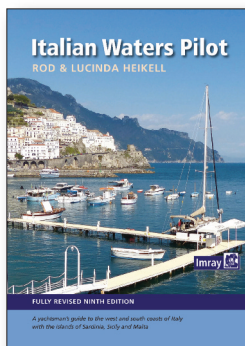
Please keep checking this site to ensure you have the latest information.

Acknowledgements

Thanks to Neil Lerner, and Marty Taylor on S.V. *Sherpa* and all who sent in information for this supplement. As always we are happy to receive any new data via Imray.

© Rod & Lu Heikell

Cowes, March 2018



Italian Waters Pilot

9th Edition 2015
ISBN 978 184623 599 3



Supplement No.2

Supplement Date: May 2017

Caution

Every effort has been made to ensure the accuracy of this supplement. However, it contains selected information and thus is not definitive and does not include all known information on the subject in hand. The authors and Imray Laurie Norie & Wilson Ltd believe this supplement to be a useful aid to prudent navigation, but the safety of a vessel depends ultimately on the judgement of the navigator, who should assess all information, published or unpublished, available to him/her.

With the increasing precision of modern position fixing methods, allowance must be made for inaccuracies in latitude and longitude on many charts, inevitably perpetuated on some harbour plans. Modern surveys specify which datum is used together with correction figures if required, but older editions should be used with caution, particularly in restricted visibility.

This supplement contains amendments and corrections sent in by a number of cruising yachtsmen and women, in addition to those culled from official sources such as *Notices to Mariners*.

Note where lights have been modified in this text do please remember to alter them on the appropriate plan.

Authors' Caution

It must be emphasised that none of the charts, plans or sketch plans shown in this guide should be used for navigation, nor should they be in any way considered as substitutes for the official charts and other nautical reference materials which every vessel is obliged by international law to have on board.

General note

An Italian maritime law, not often enforced, requires all vessels to call ahead (usually to the Guardia Costiera) to obtain permission to enter a harbour. Most likely to be enforced where pleasure boats must enter a port where commercial vessels may be manoeuvring. Harbours where this practice appears to be being enforced include: Trapani, Siracusa and Reggio di Calabria.

Page 15 Telecommunications

From June 2017, all users will be able to use their phones anywhere in the EU with the same tariff as in their home country. Thus UK call, text, and data allowances can apply. There will be no charge to receive calls. This will virtually eliminate roaming charges within the EU.

Note that this EU ruling is subject to 'fair use' policy i.e. for short term use during a typical holiday for a fortnight or so. Check carefully with your provider for charges outside your allowances.

Local calls i.e. those not to UK numbers, may not be included. Those spending longer away from home will usually lose their allowances after a certain period and will be better off getting a local SIM. Also remember that tethering is not always permitted while roaming.

Page 46 Ventimiglia

The marina concession at Ventimiglia has been acquired by the Monaco port authority. Completion is expected in 2018.

Page 54 Porto Maurizio

Porto Maurizio is currently in a period of uncertainty regarding management and administration of the marina. Go Imperia applied for the concession in May this year, but it is yet to be awarded.

Page 105 Porto di Capraia

The 20 mooring buoys each have a bow line and two stern lines, for two boats, attached. Six lines in total.

Page 115 Porto Azzurro

Main contact Forti Yachting Partners.
www.marinaportoazzurro.com

Page 137 Marina Porto di Cecina

New pontoons installed in outer harbour at Cecina.

Page 207 Castellammare di Stabia

Stabia Main Port

VHF Ch 73

The S side of the pier on the S side of Porto Davide. Superyacht berths. Max LOA 270m. Max 7m draught.

☎ 344 12 06 383

Email info@stabiamainport.com

Page 210 Punta Campanella AMP

All navigation by unauthorised vessels is prohibited in the area around Punta Campanella, Ieranto and Punta di Mantalto.

Page 219 Sant'Angelo d'Ischia

Note that the underwater ballast shown on the plan to the N of Sant'Angelo harbour entrance extends in a curve right around the bay to the point off Lido di Maronti. Depths over the ballast are less than 2m, and less than 1m in places. In the NW of the bay it lies 220m out from the beach, slightly less around the NW side of the bay.

Page 224 Amalfi

Pontile Coppola

☎ 339 422 4484

Email info@portodiamalfi.com

Page 226 Salerno

Work planned to extend Molo di Levante by 200m and to shorten Molo di Ponente by 100m. Dredging also planned to improve access for larger ships.

New cruise ship dock and passenger terminal (designed by the late Zaha Hadid) now open on the E side of Porto Nuovo (where the crane is shown on the plan).

Page 246 Tropea

Shoals on inside of breakwater marked with red and yellow buoys. Leave them to starboard.

Page 250 Reggio di Calabria

Fuel quay open in N harbour. Berths in S harbour. Darsena Reggio ☎ 0965 47914 (berths and fuel).

Page 282 Maddalena Channel

Stone beacon WRW on Secca di Mezzo missing 2016.

Page 283 La Maddalena

Extra berths on outside of W breakwater at Cala Gavetta. Laid moorings tailed to buoys.

Page 284 Marina di Cala Camiciotto (new)

Basin with pontoon berths W of Cala Camicia.

Data 200 berths. Max LOA c.20m. Max depth 3-5m Water. 220/380V. WiFi.

Charge band 6 (17/7-27/8)

☎ 349 8145699

Email calacamiciotto@gmail.com

Page 285 Marina del Ponte

☎ 338 764 1698

Page 287 Cala Spalmatore

Circomare ☎ 348 380 1178

Page 292 Porto Cervo

Sardinia Yacht Services (Agents)

Offices in Porto Cervo, Olbia, Cagliari.

☎ 0789 906021

Email info@sardiniayachtservices.it

Page 303 Olbia

Circolo Nautico Olbia

Friendly private club. Can offer berths but only if members are away. Olbia town much changed with pedestrian streets and super museum.

Page 305/6 Porto Brandinghi

Testa di Moro now marked with a S cardinal beacon.

Page 312 Arbatax

Large crane on quay conspicuous by day and night. Fuel on the quay in NE corner. Boatyards adjacent to marina. Potable water by request only.

Page 320

Portus Karalis

(N basin where shown and basin S of customs quay on plan.)

VHF Ch 09

Marina di Cagliari (new)

(N quay where customs symbol is shown on plan.)

VHF Ch 74

Data 18 berths. Max LOA 55m. Water. 220/380V.

☎ 331 920 9101

Email info@marinadicagliari.com

Motomar Sardo

Fuel dock on a pier off the W breakwater. Depths 3-5-4m.

Page 324 Porto Teulada

Email info@marinaditeulada.com

Page 352 San Vito Lo Capo

Silting off S breakwater marked by small red buoys.

Page 354 Marina di Balestrate

Works in progress 2017. Pontoons and moorings being installed. Max LOA (July 2017) 14m. Charge band 6 (Aug).

☎ 337 1469707

Email info@marinadibalestrate.com

Page 365 Cefalù

VHF Ch 09 for Marina Yachting/Marina Service (callsign *Cefalù Marina*).

Page 366 Sant'Agata

38°04'·62N 14°37'·79E WGS84

Breakwater head Fl.G.3s3M. No red buoy.

Stay well off the breakwater in the approaches. Shape a course towards the beach E of the moorings, curving around the moorings into the harbour. Min depths on this course 4-5m.

Pontoon very busy with charter changeover Friday/Saturday. Very helpful manager Guisepppe will try to fit you in outside these times if he can. Shuttle to restaurant or supermarket can be arranged.

Page 367 Capo d'Orlando Marina (new)

New marina on E side of the cape. Due to open June 2017.

Pontoons in place as on plan. Not all facilities may be completed.

☎ 0941 901877 or 335 6237473

Email info@capodorlandmarina.it

Page 369 Porto Santa Maria Maggiore

VHF Ch 15

☎ 348 556 3215

Page 378 Rada di Lipari Marina Lunga

Fish farm reported off Punta della Galea (E of Pignataro). Narrow inshore passage possible with care. Lit F.W.

AGIP fuel jetty closed (2016). Eolian Bunkers (ENIT) open with good safe pontoon.

Page 395 Catania

Work on outer basin complete. Used for RoRo and container ships.

Page 396 Brucoli

Approaches to the pontoons at Marina di Brucoli subject to uneven shoals. Call ahead for a RIB to guide you in. Depths on outer pontoons 2-3m. Fuel quay depths less than 1m. Tidal range reported to be 0-4m.

Page 400 Porto Marmoreo

We are assured by YC Lakkios that the harbour is no longer at all smelly.

YC Lakkios (S quay)

VHF Ch 74. Depths 3-5m.

Email informazioni@yachtclublakkios.com

Marina Yachting

Larger yachts berth on outside of wave-breaker pontoons. Cruise ships berth in the canal and adjacent area.

☎ 334 179 5478

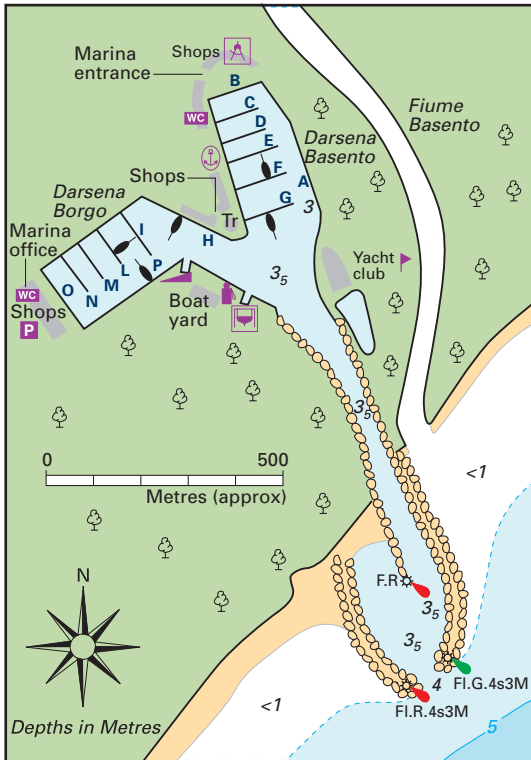
Page 403 Marzamemi

YC Marzamemi ☎ 339 873 7692

Page 435 Rocella Ionica
Fuel on the quay operational.

Page 439 Crotone
Entrance to Porto Vecchio silting on landward side. Keep closer to outer breakwater on entry.

Page 446 Porto degli Argonauti
Updated plan.



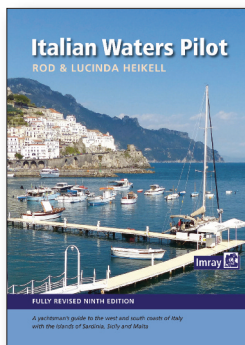
PORTO DEGLI ARGONAUTI

Page 470 No.1 Dock
Water taxi from No.1 Dock to Valetta. On the hour and half hour. Includes lift pass up to Valetta from Lascaris wharf.

Please keep checking this site to ensure you have the latest information.

Acknowledgements
Thanks to all who sent in information for this supplement. As always we are happy to receive any new data via Imray.

© Rod & Lu Heikell
Coves, May 2017



Italian Waters Pilot

9th Edition 2015
ISBN 978 184623 599 3



Supplement No.1

Supplement Date: March 2016

Caution

Every effort has been made to ensure the accuracy of this supplement. However, it contains selected information and thus is not definitive and does not include all known information on the subject in hand. The authors and Imray Laurie Norie & Wilson Ltd believe this supplement to be a useful aid to prudent navigation, but the safety of a vessel depends ultimately on the judgement of the navigator, who should assess all information, published or unpublished, available to him/her.

With the increasing precision of modern position fixing methods, allowance must be made for inaccuracies in latitude and longitude on many charts, inevitably perpetuated on some harbour plans. Modern surveys specify which datum is used together with correction figures if required, but older editions should be used with caution, particularly in restricted visibility.

This supplement contains amendments and corrections sent in by a number of cruising yachtsmen and women, in addition to those culled from official sources such as *Notices to Mariners*.

Note where lights have been modified in this text do please remember to alter them on the appropriate plan.

Author's Caution

It must be emphasised that none of the charts, plans or sketch plans shown in this guide should be used for navigation, nor should they be in any way considered as substitutes for the official charts and other nautical reference materials which every vessel is obliged by international law to have on board.

Page 96 Marina Porto Lotti

Superyacht berths up to 80m LOA, and a transit berth for up to 180m LOA will be available in 2016.

Page 204 Marina Vigliena

Prospects for Marina Vigliena appear dashed by expansion of the container port into the area of the planned marina. No berths here at present.

Page 354 Balestrate

Balestrate under tender for the marina development
www.marinadibalestrate.com

Page 390 Naxos

Naxos Marina Yachting ☎ 095 0930 628 or 392 198 2811
Email info@yachtingmarina.it
Plans to develop a marina and cruise ship berth here have been postponed.

Page 408 Scoglitti

Scoglitti Beach Club has amalgamated with Club Nautico Scoglitti.
Piedro ☎ 0922 1837 137 or 338 9921 779

VHF Ch 14

Note Many good fish restaurants.

Page 410 San Leone

San Leone still silting. Red light not working (2015). Small buoys and steel stakes (FL.R unrel.) mark shallows. Keep to starboard. Few visitors' berths. All concessions listen on VHF Ch 74.

Page 412 Sciacca

Sciacca pontoon berths busy in season. It may be possible to berth stern-to on the W quay outside the fuel berth. A trip line brought back to the bow might be advisable. Fuel available in any quantity from the fuel dock.

Page 424 Isole Egadi

Yachts over 10 tons GRT who wish to anchor within the Egadi islands must 'register' with the authorities in Favignana, Levanto or Marettimo. Anchoring overnight in some bays is prohibited. Regular patrols by firm but friendly authorities will impose the restrictions.

Page 448 Campomarino

Campomarino porto turistico Torre Moline
VHF Ch 18
Email info@torremoline.it

Page 458 Otranto

New pontoons for shoal draught small craft under the walled town.

Marina di Otranto

A new porto turistico under development in a new basin to be built on the N side of the Otranto breakwater.
Data (when finished) 415 berths. Max LOA 40m.
Depths 2-8m.
Facilities Water. 220/380V. Showers and toilets. Fuel quay.
Further details in future supplements.

Page 475 Sandy yacht Marina

Sandy Yacht Marina is now known as Roland Marina.
Marina manager Giti ☎ 9947 8678
Email giti@sdyachts.com

Page 476

There are plans to develop superyacht berths along the quay at Sliema.

Please keep checking this site to ensure you have the latest information.

Acknowledgements

Thanks to all who sent in information for this supplement. As always we are happy to receive any new data via Imrays.

© Rod & Lu Heikell
Cowes, March 2016