

Imray Correction Notice

2000 Series small format charts

IC2000-6

07 May 2019

Chart Pack 2000

Edition Mar 2018

Chart 2000.1

Edition 2018

1 Sunk Head NE

Replace Whis with Bell at BY N cardinal pillar Lt buoy **Sunk Head Tower** in 51°46'·64N 1°30'·50E (ILNW 211/18)

2 Whiting Bank

Insert dangerous Wk sym in 52°01'·66N 1°30'·82E. Delete depth 8·1m close W (ILNW 436/18)

Chart 2000.2

Edition 2018

1 Orford Haven (*correction amended see ILNW 170/19*)

Move:

R can buoy **Oxley** to 52°02'·08N 1°27'·71E

G con. buoy **Weir** to 52°02'·27N 1°27'·61E

For detailed information about the River Ore entrance yachtsmen are advised to consult the accompanying chartlet (revised 03/18) (ILNW 220/18)

2 Whiting Bank

Replace depth 8·1m with dangerous Wk sym in 52°01'·66N 1°30'·82E (ILNW 436/18)

3 Orford Haven

Move G con. buoy **Weir** to 52°02'·32N 1°27'·59E

For detailed information about the River Ore entrance yachtsmen are advised to consult the accompanying chartlet (revised 03/19) (ILNW 170/19)

Chart 2000.3

Edition 2018

1 Orford Haven (*correction amended see ILNW 170/19*)

Move:

R can buoy **Oxley** to 52°02'·08N 1°27'·71E

G con. buoy **Weir** to 52°02'·27N 1°27'·61E

For detailed information about the River Ore entrance yachtsmen are advised to consult the accompanying chartlet (revised 03/18) (ILNW 220/18)

2 Woodbridge Haven (*correction amended see ILNW 171/19*)

Move:

R can buoy **Deben** to 51°59'·29N 1°23'·52E

R can buoy **Knoll Spit** to 51°58'·52N 1°23'·23E

G con. buoy **Mid Knoll** to 51°58'·65N 1°23'·34E

For detailed information about the River Deben entrance yachtsmen are advised to consult the accompanying chartlet (revised 03/18) (ILNW 221/18)

3 Whiting Bank

Replace depth 8·1m with dangerous Wk sym in 52°01'·66N 1°30'·82E (ILNW 436/18)

4 Orford Haven

Move G con. buoy **Weir** to 52°02'·32N 1°27'·59E

For detailed information about the River Ore entrance yachtsmen are advised to consult the accompanying chartlet (revised 03/19) (ILNW 170/19)

5 Woodbridge Haven

Move:

R can buoy **Knoll Spit** to 51°58'·48N 1°23'·23E

G con. buoy **Mid Knoll** to 51°58'·60N 1°23'·29E

For detailed information about the River Deben entrance yachtsmen are advised to consult the accompanying chartlet (revised 03/19) (ILNW 171/19)

Chart 2000.4

Edition 2018

No corrections are currently available for this chart.

Chart 2000.5

Edition 2018

No corrections are currently available for this chart.

Chart 2000.6

Edition 2018

1 Maldon (Plan A)

Amend duration of Lt Iso.G.10s10m2M to 5s in 51°44'·06N 0°42'·85E (ILNW 437/18)

2 River Blackwater

Insert R can Lt buoy Fl.R.3s in 51°44'·71N 0°53'·35E (ILNW 526/18)

Chart 2000.7

Edition 2018

1 River Colne

Replace drying Wk sym. with dangerous Wk sym. in 51°48'·14N 1°00'·11E plus insert BYB E cardinal Bn close E. (ILNW 449/18)

2 River Blackwater

Insert R can Lt buoy Fl.R.3s in 51°44'·71N 0°53'·35E (ILNW 526/18)

Chart 2000.8

Edition 2018

No corrections are currently available for this chart.

Chart 2000.9

Edition 2018

No corrections are currently available for this chart.

Chart 2000.10

Edition 2018

1 Holm Sand

Move G con Lt buoy **W Holm** in 52°29'·81N 1°47'·09E to 52°29'·50N 1°46'·99E (ILNW 435/18)

2 Lowestoft Harbour (Plan B)

The pontoons have been reconfigured in Hamilton Dock. Two new pontoons emanate from the W quay. Insert Lt Fl.Y.2·5s in:

52°28'·58N 1°45'·45E (S pontoon head)

52°28'·59N 1°45'·47E (N pontoon head)

One pontoon from the N quay has been removed. Delete Lt Fl.Y.4s in 52°28'·58N 1°45'·46E (W pontoon head) (ILNW 583/18)

3 Lowestoft Harbour (Plan B)

Insert minor Lt 4xIso.Y in 52°28'·37N 1°44'·98E (ILNW 42/19)

Chart 2000 TIDAL STREAMS

Edition 2018

1 Tidal Steam Diagram 1H after HW Sheerness

Replace subtitle 4hr 25min after HW Dover with 2hr 25min after HW Dover (ILNW 268/18)



Depths in Metres

This chart is a free download
NOT TO BE USED FOR NAVIGATION



Caution

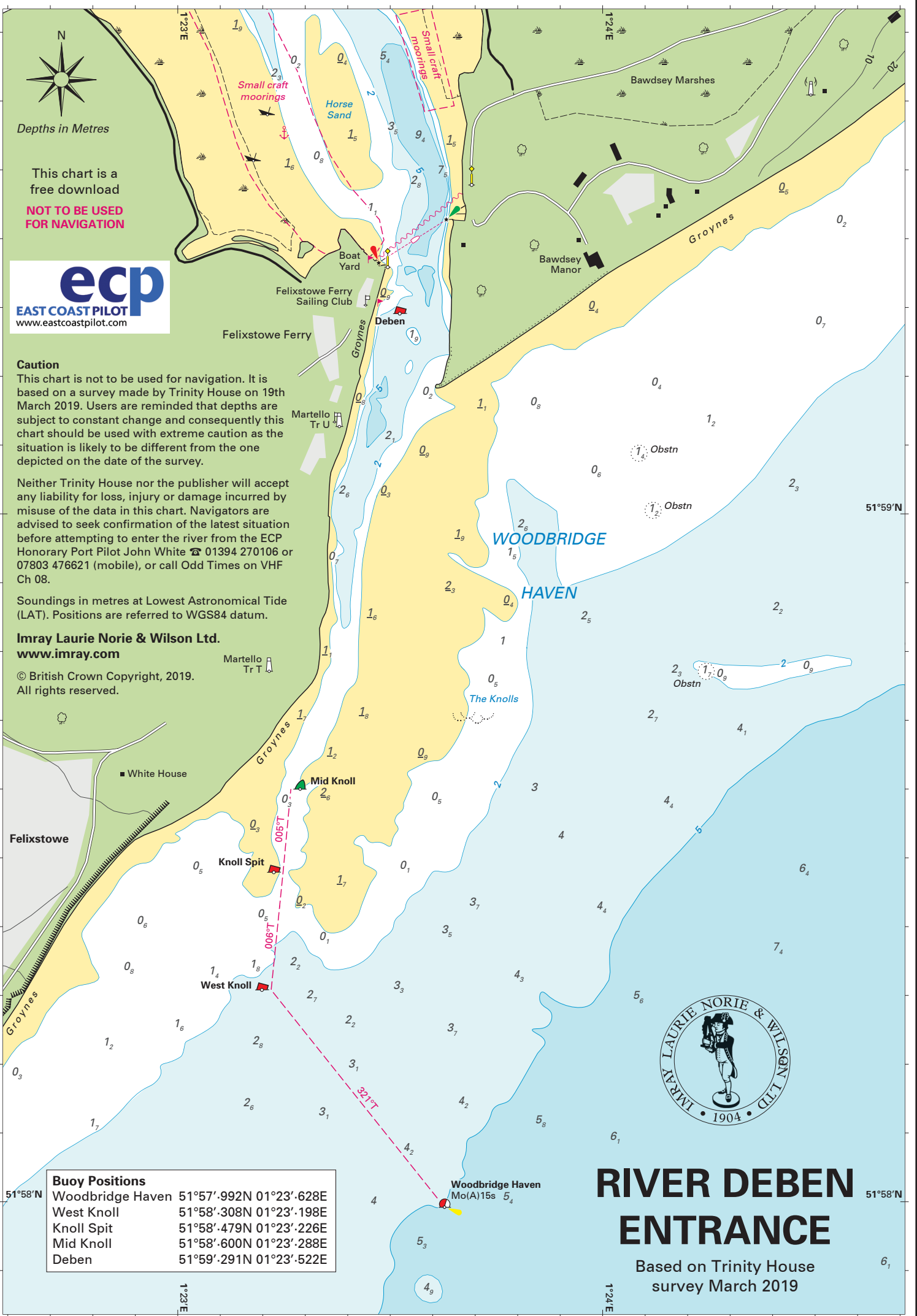
This chart is not to be used for navigation. It is based on a survey made by Trinity House on 19th March 2019. Users are reminded that depths are subject to constant change and consequently this chart should be used with extreme caution as the situation is likely to be different from the one depicted on the date of the survey.

Neither Trinity House nor the publisher will accept any liability for loss, injury or damage incurred by misuse of the data in this chart. Navigators are advised to seek confirmation of the latest situation before attempting to enter the river from the ECP Honorary Port Pilot John White ☎ 01394 270106 or 07803 476621 (mobile), or call Odd Times on VHF Ch 08.

Soundings in metres at Lowest Astronomical Tide (LAT). Positions are referred to WGS84 datum.

Imray Laurie Norie & Wilson Ltd.
www.imray.com

© British Crown Copyright, 2019.
All rights reserved.



Buoy Positions	
Woodbridge Haven	51°57'.992N 01°23'.628E
West Knoll	51°58'.308N 01°23'.198E
Knoll Spit	51°58'.479N 01°23'.226E
Mid Knoll	51°58'.600N 01°23'.288E
Deben	51°59'.291N 01°23'.522E



RIVER DEBEN ENTRANCE

Based on Trinity House
survey March 2019

Caution

This chart is not to be used for navigation. It is based on a survey made by Trinity House on 20th March 2019. Users are reminded that depths are subject to constant change and consequently this chart should be used with extreme caution as the situation is likely to be different from the one depicted on the date of the survey.

Neither Trinity House nor the publisher will accept any liability for loss, injury or damage incurred by misuse of the data in this chart. Navigators are advised to seek confirmation of the latest situation before attempting to enter the river from the ECP Honorary Port Pilot and Orford Harbourmaster Philip Attwood ☎ 07528 092635, or call *Chantry* on VHF Ch 08 (although note that he is based at Orford and may be out of radio range from the river entrance).

Soundings in metres at Lowest Astronomical Tide (LAT). Positions are referred to WGS84 datum.

Imray Laurie Norie & Wilson Ltd.
www.imray.com

© British Crown Copyright, 2019.

All rights reserved.



52°03'N

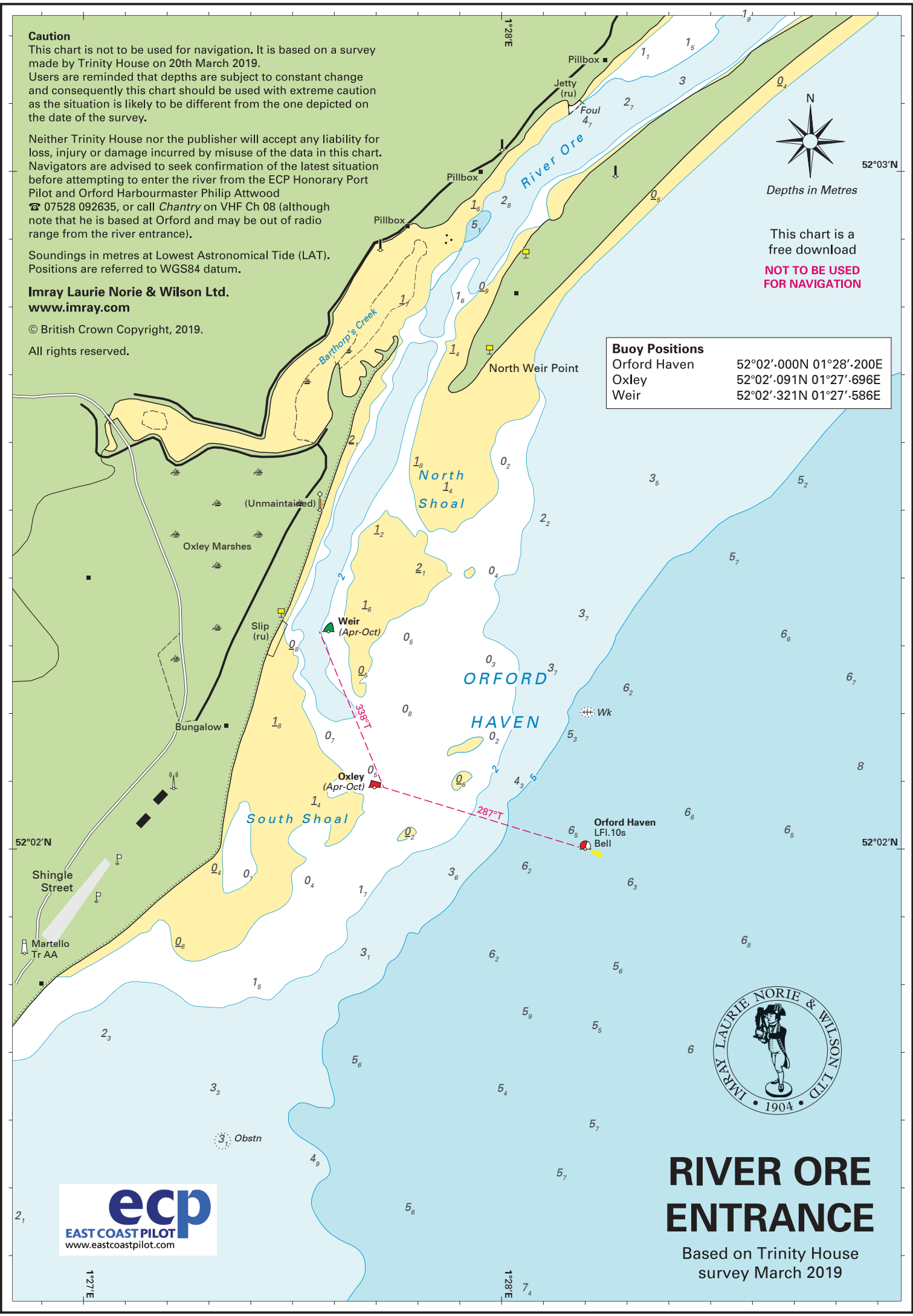
Depths in Metres

This chart is a free download

NOT TO BE USED FOR NAVIGATION

Buoy Positions

Orford Haven	52°02'·000N 01°28'·200E
Oxley	52°02'·091N 01°27'·696E
Weir	52°02'·321N 01°27'·586E



52°02'N

52°02'N

Shingle Street

Martello Tr AA

Bungalow

South Shoal

Weir (Apr-Oct)

Oxley (Apr-Oct)

(Unmaintained)

Oxley Marshes

North Shoal

ORFORD HAVEN

Orford Haven LFI.10s Bell

Wk

North Weir Point

Pillbox

Pillbox

Pillbox

Jetty (ru)

Foul 4.7

1°28'E

1°

1.5

1.1

3

2.7

0.4

1.6

2.8

5.1

0.9

1.6

1.4

1.8

0.2

2.2

3.5

5.2

1.8

1.4

1.2

2.1

1.6

0.5

0.6

0.8

0.3

0.7

1.8

0.7

0.4

0.4

1.7

0.4

1.5

3.1

6.2

5.9

5.5

6

5.7

5.7

0.2

0.4

0.5

0.3

0.7

3.7

6.2

5.3

4.3

6.6

6.3

6.6

6.3

6.8

6

5.6

5.4

5.7

6

5.7

5.6

7.4

1°28'E

7.4



RIVER ORE ENTRANCE

Based on Trinity House survey March 2019