

Imray Correction Notice

2000 Series small format charts

IC2000-6

09 November 2020

Chart Pack 2000

Edition Mar 2018

Chart 2000.1

Edition 2018

1 **Sunk Head NE**

Replace Whis with Bell at BY N cardinal pillar Lt buoy **Sunk Head Tower** in 51°46'·64N 1°30'·50E (ILNW 211/18)

2 **Whiting Bank**

Insert dangerous Wk sym in 52°01'·66N 1°30'·82E. Delete depth 8·1m close W (ILNW 436/18)

3 **Barrow E & Knock John NE**

Insert drying height:

-1·4m in 51°37'·03N 1°11'·49E

-0·3m in 51°37'·25N 1°12'·28E. Delete depth 0·2m close SW

Insert lgd *Changing depths* centred on 51°37'·00N 1°12'·00E

Insert drying height:

-1m in 51°35'·42N 1°12'·56E

-0·4m in 51°35'·93N 1°13'·66E. Delete depth 2·8m close S

Insert depth 0·3m in 51°36'·20N 1°14'·06E extend 2m contour NW to enclose (ILNW 44/20)

4 **Black Deep, Long Sand & Barrow Deep**

Insert R port pillar Lt buoy **No 8** Fl(2)R.5s in 51°35'·05N 1°11'·36E

Replace the following Lt buoy shapes (Lt characteristics remain unchanged):

G con with G starboard pillar Lt buoy **No 3** in 51°42'·39N 1°26'·65E

R can with R port pillar Lt buoy **No 6** in 51°38'·52N 1°24'·40E

G con with G starboard pillar Lt buoy **No 7** in 51°37'·49N 1°13'·47E

R can with R port pillar Lt buoy **No 6** in 51°37'·30N 1°14'·68E (ILNW 62/20)

5 **Orford Ness**

Delete Lighthouse (disused) in 52°05'·03N 1°34'·45E (ILNW 451/20)

6 **Shipwash S**

Insert depth 0·9m in 51°54'·20N 1°34'·50E (ILNW 536/20)

7 **Shipway N**

Replace depth 3·2m with 2·8m in 52°00'·58N 1°38'·08E (ILNW 549/20)

Chart 2000.2

Edition 2018

1 **Orford Haven** (*correction amended see ILNW 170/19, 245/20*)

Move:

R can buoy **Oxley** to 52°02'·08N 1°27'·71E

G con. buoy **Weir** to 52°02'·27N 1°27'·61E

For detailed information about the River Ore entrance yachtsmen are advised to consult the accompanying chartlet (revised 03/18) (ILNW 220/18)

2 **Whiting Bank**

Replace depth 8.1m with dangerous Wk sym in 52°01'·66N 1°30'·82E (ILNW 436/18)

3 Orford Haven (*correction amended see ILNW 245/20*)

Move G con. buoy **Weir** to 52°02'·32N 1°27'·59E

For detailed information about the River Ore entrance yachtsmen are advised to consult the accompanying chartlet (revised 03/19) (ILNW 170/19)

4 Orford Haven (*Correction amended INLW 366/20*)

Move:

R can buoy **Oxley** to 52°02'·02N 1°27'·96E

G con. buoy **Weir** to 52°02'·22N 1°27'·56E

An official survey will be carried out in due course. When this data becomes available an updated chartlet will be issued. (ILNW 245/20)

5 Orford Haven

Move G con. buoy **Weir** to 52°02'·20N 1°27'·58E (ILNW 366/20)

6 Orford Ness

Delete Lighthouse (disused) in 52°05'·03N 1°34'·45E (ILNW 451/20)

Chart 2000.3

Edition 2018

1 Orford Haven (*correction amended see ILNW 170/19, 245/20*)

Move:

R can buoy **Oxley** to 52°02'·08N 1°27'·71E

G con. buoy **Weir** to 52°02'·27N 1°27'·61E

For detailed information about the River Ore entrance yachtsmen are advised to consult the accompanying chartlet (revised 03/18) (ILNW 220/18)

2 Woodbridge Haven (*correction amended see ILNW 171/19, 244/20*)

Move:

R can buoy **Deben** to 51°59'·29N 1°23'·52E

R can buoy **Knoll Spit** to 51°58'·52N 1°23'·23E

G con. buoy **Mid Knoll** to 51°58'·65N 1°23'·34E

For detailed information about the River Deben entrance yachtsmen are advised to consult the accompanying chartlet (revised 03/18) (ILNW 221/18)

3 Whiting Bank

Replace depth 8.1m with dangerous Wk sym in 52°01'·66N 1°30'·82E (ILNW 436/18)

4 Orford Haven (*correction amended see ILNW 245/20*)

Move G con. buoy **Weir** to 52°02'·32N 1°27'·59E

For detailed information about the River Ore entrance yachtsmen are advised to consult the accompanying chartlet (revised 03/19) (ILNW 170/19)

5 Woodbridge Haven (*correction amended see ILNW 244/20*)

Move:

R can buoy **Knoll Spit** to 51°58'·48N 1°23'·23E

G con. buoy **Mid Knoll** to 51°58'·60N 1°23'·29E

For detailed information about the River Deben entrance yachtsmen are advised to consult the accompanying chartlet (revised 03/19) (ILNW 171/19)

6 Woodbridge Haven

Move:

G con. buoy **Mid Knoll** to 51°58'·58N 1°23'·24E

R can buoy **Knoll Spit** to 51°58'·52N 1°23'·18E

R can buoy **West Knoll** to 51°58'·43N 1°23'·07E

An official survey will be carried out in due course. When this data becomes available an updated chartlet will be issued. (ILNW 244/20)

7 Orford Haven (*Correction amended INLW 366/20*)

Move:

R can buoy **Oxley** to 52°02'·02N 1°27'·96E

G con. buoy **Weir** to 52°02'·22N 1°27'·56E

An official survey will be carried out in due course. When this data becomes available an updated chartlet will be issued. (ILNW 245/20)

8 Orford Haven

Move G con. buoy **Weir** to 52°02'·20N 1°27'·58E (ILNW 366/20)

9 Orford Ness

Delete Lighthouse (disused) in 52°05'·03N 1°34'·45E (ILNW 451/20)

Chart 2000.4

Edition 2018

1 Cork Sand

Insert drying height:

-0·5m in 51°54'·12N 1°23'·50E and extend 0m contour N to enclose

-0·3m in 51°54'·53N 1°24'·40E and extend 0m contour SE to enclose plus delete depth 0·7m close NW (ILNW 132/20)

Chart 2000.5

Edition 2018

1 New Mistletoe N

Insert minor R Lt in 51°56'·76N 1°05'·35E

Delete minor R Lt in 51°56'·74N 1°05'·28E (ILNW 684/19)

Chart 2000.6

Edition 2018

1 Maldon (Plan A)

Amend duration of Lt Iso.G.10s10m2M to 5s in 51°44'·06N 0°42'·85E (ILNW 437/18)

2 River Blackwater

Insert R can Lt buoy Fl.R.3s in 51°44'·71N 0°53'·35E (ILNW 526/18)

3 Mersea Island S

Insert general marine limit, shellfish beds, joining:

51°46'·15N 0°56'·89E (E border)

51°46'·15N 0°55'·62E

51°45'·63N 0°55'·62E

51°45'·63N 0°56'·89E (E border)

Add assoc. label *Oyster Beds* (*see Note*). (ILNW 279/19)

4 Mersea Island S

Insert obstruction sym. & lgd *Obstn* (*buoyed*) in 51°46'·10N 0°56'·20E (ILNW 338/19)

5 West Mersea SE

Insert lgd *Numerous Obstructions* centred on 51°45'·78N 0°56'·50E (ILNW 394/20)

Chart 2000.7

Edition 2018

1 River Colne

Replace drying Wk sym. with dangerous Wk sym. in 51°48'·14N 1°00'·11E plus insert BYB E cardinal Bn close E. (ILNW 449/18)

2 River Blackwater

Insert R can Lt buoy FI.R.3s in 51°44'·71N 0°53'·35E (ILNW 526/18)

3 Mersea Island S

Insert general marine limit, shellfish beds, joining:

51°46'·15N 0°57'·43E

51°45'·63N 0°57'·43E

51°45'·63N 0°55'·62E

51°46'·15N 0°55'·62E

Add assoc. label *Oyster Beds* (see Note). (ILNW 279/19)

4 Mersea Island S

Insert obstruction sym. & lgd *Obstrn* (buoyed) in 51°46'·10N 0°56'·20E (ILNW 338/19)

5 Saint Peter's Flats

Insert obstruction sym & lgd *Obstrn* in 51°44'·19N 0°59'·16E (ILNW 458/19)

6 West Mersea SE

Insert lgd *Numerous Obstructions* centred on 51°45'·78N 0°56'·50E (ILNW 394/20)

Chart 2000.8

Edition 2018

1 Spitway

Insert drying height -0m in 51°42'·24N 1°07'·23E, extend 0m contour E to enclose (ILNW 610/19)

2 Ray Sand Channel & Ray Sand

Insert depth:

1·4m in 51°41'·69N 1°01'·03E

0·9m in 51°41'·30N 1°00'·15E, extend 2m contour W to enclose

0·2m in 51°41'·17N 1°00'·34E

Insert drying height -2·3m in:

51°39'·04N 0°58'·76E

51°38'·96N 0°58'·25E (ILNW 613/19)

3 Ray Sand

Move RW safe water spher. buoy **Raysand Middle** in 51°40'·00N 0°59'·50E to 51°40'·00N 0°59'·00E (ILNW 10/20)

4 River Crouch Entrance

Move R can Lt buoy **Outer Crouch No 4** to 51°38'·00N 0°58'·00E (ILNW 263/20)

5 Ray Sand

Move Y spher buoy **Raysand** from 51°39'·10N 0°59'·50E to 51°39'·08N 0°59'·28E (ILNW 493/20)

Chart 2000.9

Edition 2018

1 Essex Marina (Plan C)

Delete No wash zone and Y special spher. Lt buoy Fl.Y.2.5s in:

51°37'·45N 0°48'·00E

51°37'·47N 0°47'·73E (ILNW 225/19)

2 River Crouch, Wallasea Island

The jetty at Ringwood point has been removed.

Delete minor R Lt in:

51°37'·04N 0°50'·71E

51°37'·04N 0°50'·83E

Delete minor Y Lt in 51°37'·04N 0°50'·76E (ILNW 588/19)

3 Burnham-on-Crouch

Amend:

No3 Q.G Lt buoy to a G con Lt buoy and move to 51°37'·18N 0°50'·01E

No5 Q.G Lt buoy to a G con Lt buoy and move to 51°37'·19N 0°49'·63E

No7 Q.G Lt buoy to a G con Lt buoy and move to 51°37'·24N 0°49'·16E

Buoy names and Lt description remains unchanged (ILNW 485/20)

Chart 2000.10

Edition 2018

1 Holm Sand

Move G con Lt buoy **W Holm** in 52°29'·81N 1°47'·09E to 52°29'·50N 1°46'·99E (ILNW 435/18)

2 Lowestoft Harbour (Plan B)

The pontoons have been reconfigured in Hamilton Dock. Two new pontoons emanate from the W quay.

Insert Lt Fl.Y.2.5s in:

52°28'·58N 1°45'·45E (S pontoon head)

52°28'·59N 1°45'·47E (N pontoon head)

One pontoon from the N quay has been removed. Delete Lt Fl.Y.4s in 52°28'·58N 1°45'·46E (W pontoon head) (ILNW 583/18)

3 Lowestoft Harbour (Plan B)

Insert minor Lt 4xIso.Y in 52°28'·37N 1°44'·98E (ILNW 42/19)

4 Lowestoft (Main chart & Plan A)

Amend Lt sectors at Lt Dir.WRG.17m10M in 52°27'·71N 1°44'·54E from 222°-G-224°-W-229°-R-232° to 222°-G-226°-W-230°-R-232°. (ILNW 202/20)

5 Orford Ness

Delete Lighthouse (disused) in 52°05'·03N 1°34'·45E (ILNW 451/20)

6 Lowestoft (Main chart & Plan A)

Amend Lt sectors at Lt Dir.WRG.17m10M in 52°27'·71N 1°44'·54E from 222°-G-226°-W-230°-R-232° to 220°-G-224°-W-229°-R-232° (ILNW 488/20)

7 Approaches to Lowestoft (Main chart & Plan A)

Move YB S Card Lt buoy **S Holm** from 52°26'·85N 1°47'·15E to 52°26'·63N 1°47'·25E (ILNW 489/20)

8 Lake Lothing (Plan C)

Insert depth 1.9m in 52°28'·59N 1°43'·21E. Delete drying Wk symbol and assoc Lt Fl.Y.3s close NE (ILNW 505/20)

9 Holm Sand (Plan A)

Insert depth 2.7m in 52°29'·21N 1°47'·45E. Delete depths 5.8m & 7.2m close E&W. Add assoc. Igd *Changing Depths (see caution)* (ILNW 558/20)

Chart 2000 TIDAL STREAMS

Edition 2018

1 Tidal Steam Diagram 1H after HW Sheerness

Replace subtitle 4hr 25min after HW Dover with 2hr 25min after HW Dover (ILNW 268/18)

Caution

This chart is not to be used for navigation. It is based on a survey made by Trinity House on 20th March 2019.

Users are reminded that depths are subject to constant change and consequently this chart should be used with extreme caution as the situation is likely to be different from the one depicted on the date of the survey.

Neither Trinity House nor the publisher will accept any liability for loss, injury or damage incurred by misuse of the data in this chart. Navigators are advised to seek confirmation of the latest situation before attempting to enter the river from the ECP Honorary Port Pilot and Orford Harbourmaster Philip Attwood ☎ 07528 092635, or call *Chantry* on VHF Ch 08 (although note that he is based at Orford and may be out of radio range from the river entrance).

Soundings in metres at Lowest Astronomical Tide (LAT). Positions are referred to WGS84 datum.

Imray Laurie Norie & Wilson Ltd.
www.imray.com

© British Crown Copyright, 2019.

All rights reserved.



52°03'N

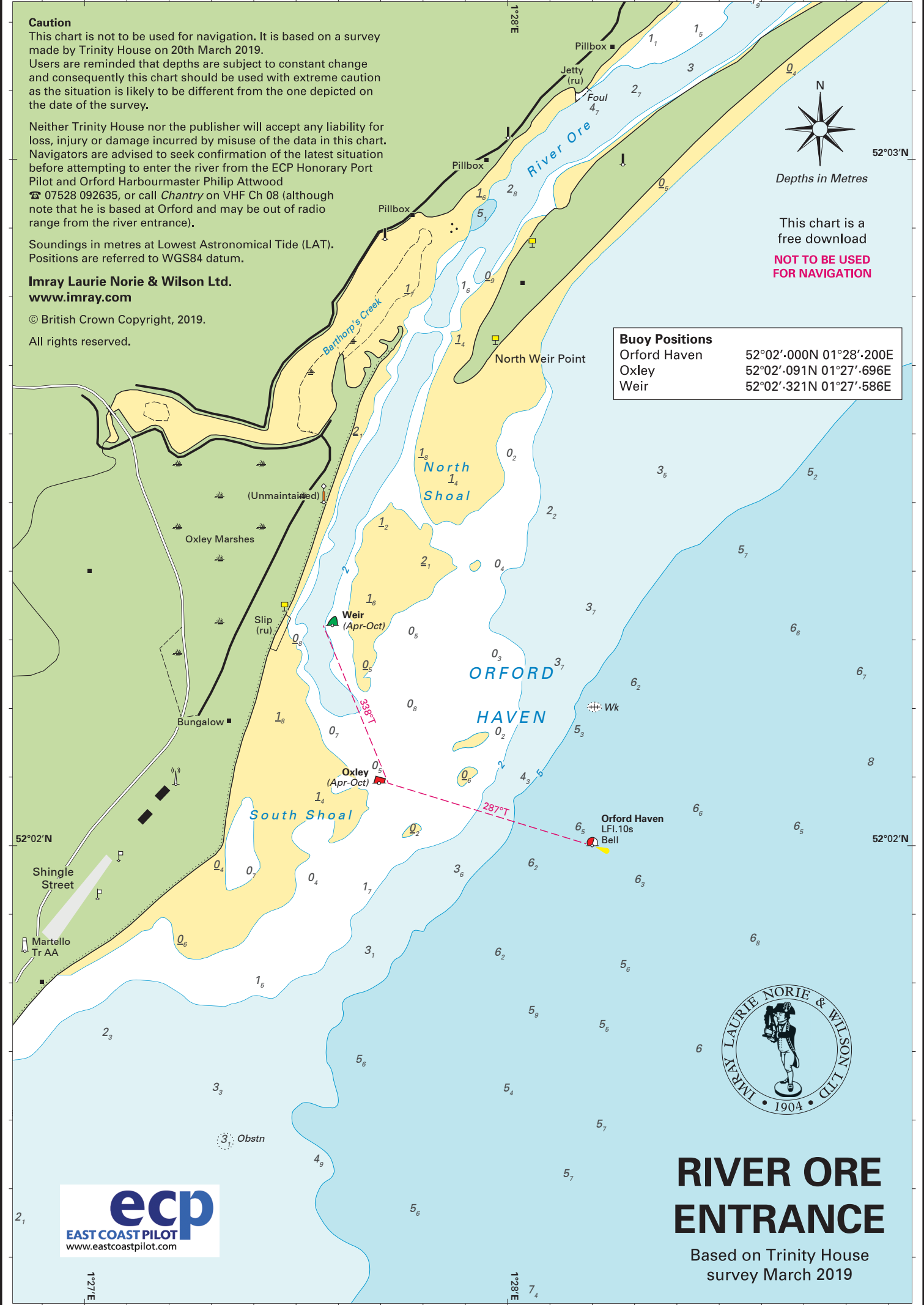
Depths in Metres

This chart is a free download

NOT TO BE USED FOR NAVIGATION

Buoy Positions

Orford Haven	52°02'.000N 01°28'.200E
Oxley	52°02'.091N 01°27'.696E
Weir	52°02'.321N 01°27'.586E



RIVER ORE ENTRANCE

Based on Trinity House survey March 2019





Depths in Metres

This chart is a free download
NOT TO BE USED FOR NAVIGATION



Caution

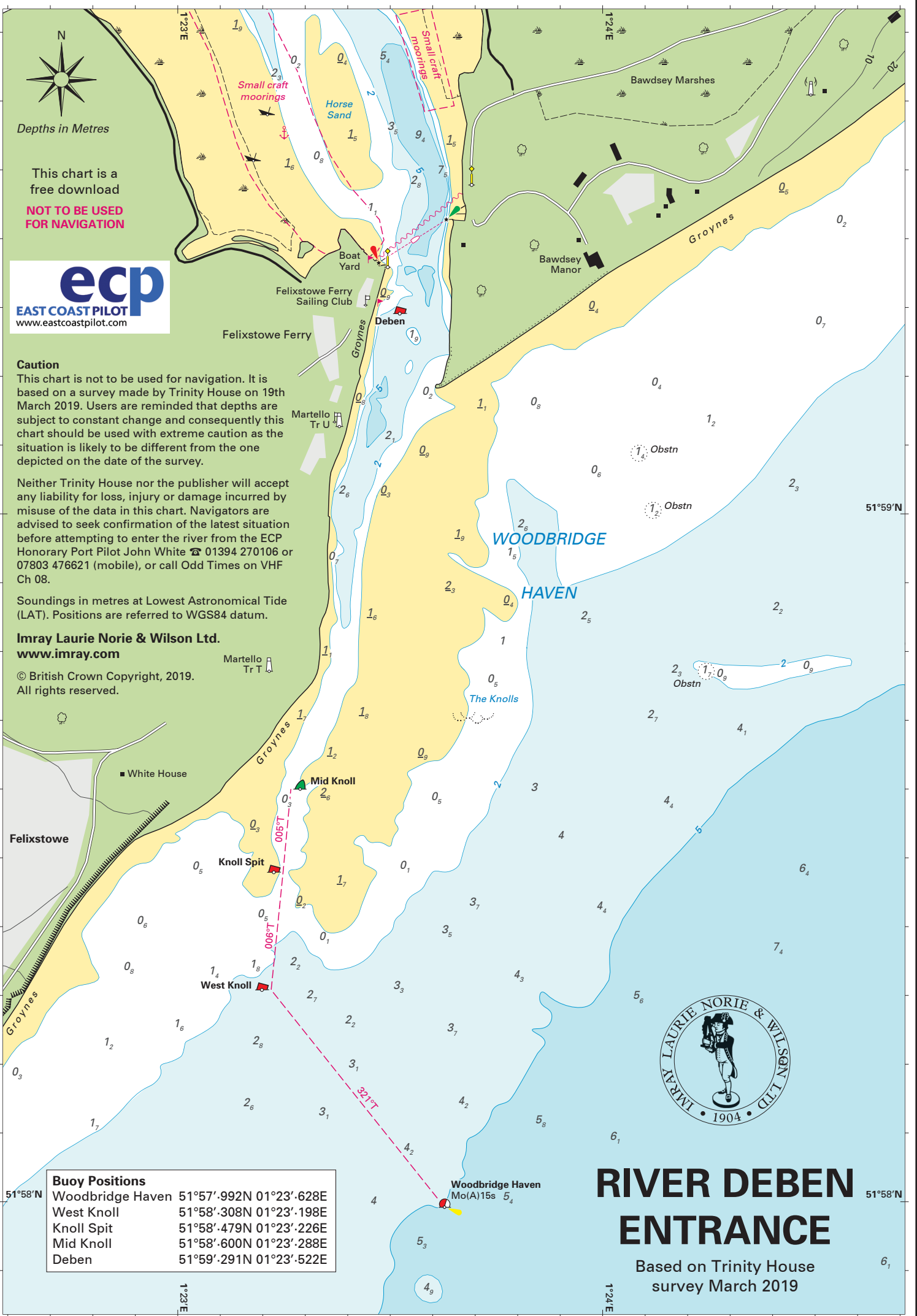
This chart is not to be used for navigation. It is based on a survey made by Trinity House on 19th March 2019. Users are reminded that depths are subject to constant change and consequently this chart should be used with extreme caution as the situation is likely to be different from the one depicted on the date of the survey.

Neither Trinity House nor the publisher will accept any liability for loss, injury or damage incurred by misuse of the data in this chart. Navigators are advised to seek confirmation of the latest situation before attempting to enter the river from the ECP Honorary Port Pilot John White ☎ 01394 270106 or 07803 476621 (mobile), or call Odd Times on VHF Ch 08.

Soundings in metres at Lowest Astronomical Tide (LAT). Positions are referred to WGS84 datum.

Imray Laurie Norie & Wilson Ltd.
www.imray.com

© British Crown Copyright, 2019.
All rights reserved.



Buoy Positions	
Woodbridge Haven	51°57'.992N 01°23'.628E
West Knoll	51°58'.308N 01°23'.198E
Knoll Spit	51°58'.479N 01°23'.226E
Mid Knoll	51°58'.600N 01°23'.288E
Deben	51°59'.291N 01°23'.522E



RIVER DEBEN ENTRANCE

Based on Trinity House
survey March 2019