

Imray Correction Notice

2000 Series small format charts

IC2100-6

04 October 2018

Chart Pack 2100

Edition Feb 2018

Chart 2100.1

Edition 2018

No corrections are currently available for this chart.

Chart 2100.2

Edition 2018

1 Kingsnorth Power Station

Delete **CHY** (198) in 51°25'·10N 0°36'·23E (ILNW 162/18)

2 Leigh Channel

Move G con buoy **Leigh** in 51°31'·08N 0°42'·56E to 51°31'·09N 0°42'·72E (ILNW 395/18)

3 Yantlet Channel

Delete YB S card pillar Lt buoy **Oikos** Q(6)+LFI.15s in 51°30'·34N 0°33'·62E (ILNW 524/18)

Chart 2100.3

Edition 2018

1 Swanscombe Marshes (Panel B)

Insert minor R Lt marking the end of the disused jetty in 51°27'·75N 0°18'·15E (ILNW 448/18)

2 Yantlet Channel (Panel A)

Works to construct the new Oikos jetty have now been completed.

Insert jetty, line, joining:

51°30'·53N 0°33'·65E (existing jetty)

51°30'·38N 0°33'·59E

and

51°30'·40N 0°33'·47E

51°30'·38N 0°33'·59E

51°30'·38N 0°33'·76E

The jetty is marked by 3 minor G Lts. Entry is restricted around the structure.

Delete:

lgd *Works in progress* (2017) centred on 51°30'·37N 0°33'·32E

YB S card pillar Lt buoy **Oikos** Q(6)+LFI.15s in 51°30'·34N 0°33'·62E

minor G Lts in:

51°30'·51N 0°33'·56E

51°30'·50N 0°33'·63E (ILNW 524/18)

Chart 2100.4

Edition 2018

No corrections are currently available for this chart.

Chart 2100.5

Edition 2018

1 Kingsnorth Power Station

Delete **CHIMNEY** (198) in 51°25'·10N 0°36'·23E (ILNW 162/18)

2 River Medway

Insert drying height:

-1.6m in 51°23'53N 0°38'33E
-1.9m in 51°23'00N 0°37'88E (ILNW 270/18)

Chart 2100.6

Edition 2018

1 The Swale

Insert drying height:

-3.7m in 51°20'69N 0°53'99E. Delete drying height -3.4m close SW

-3.2m in 51°20'17N 0°54'18E

-4.7m in 51°19'46N 0°54'45E

Replace drying height -1.1m with drying height -1.9m in 51°20'69N 0°54'08E (ILNW 271/18)

Chart 2100.7

Edition 2018

1 Kellet Gut

Replace Wk depth 3m with drying Wk sym. in 51°14'92N 1°34'24E (ILNW 134/18)

Chart 2100.8

Edition 2018

No corrections are currently available for this chart.

Chart 2100.9

Edition 2018

1 Beachy Head

Amend range of Lt FI(2)20s31m8M to 16M in 50°44'03N 0°14'49E (ILNW 434/18)

Chart 2100.10

Edition 2018

1 Beachy Head

Amend range of Lt FI(2)20s31m8M to 16M in 50°44'03N 0°14'49E (ILNW 434/18)

2 Rampion Offshore Wind Farm

Construction work on the Rampion Offshore wind farm is now complete.

Insert accompanying block correction centred on 50°40'83N 0°14'60W (ILNW 513/18)

Chart 2100.11

Edition 2018

1 Dover (Plan C)

Move Y spher. Lt buoy FI(5)Y.20s in 51°07'35N 1°20'70E to 51°07'33N 1°20'65E (ILNW 229/18)

2 Ramsgate (Plans A & B)

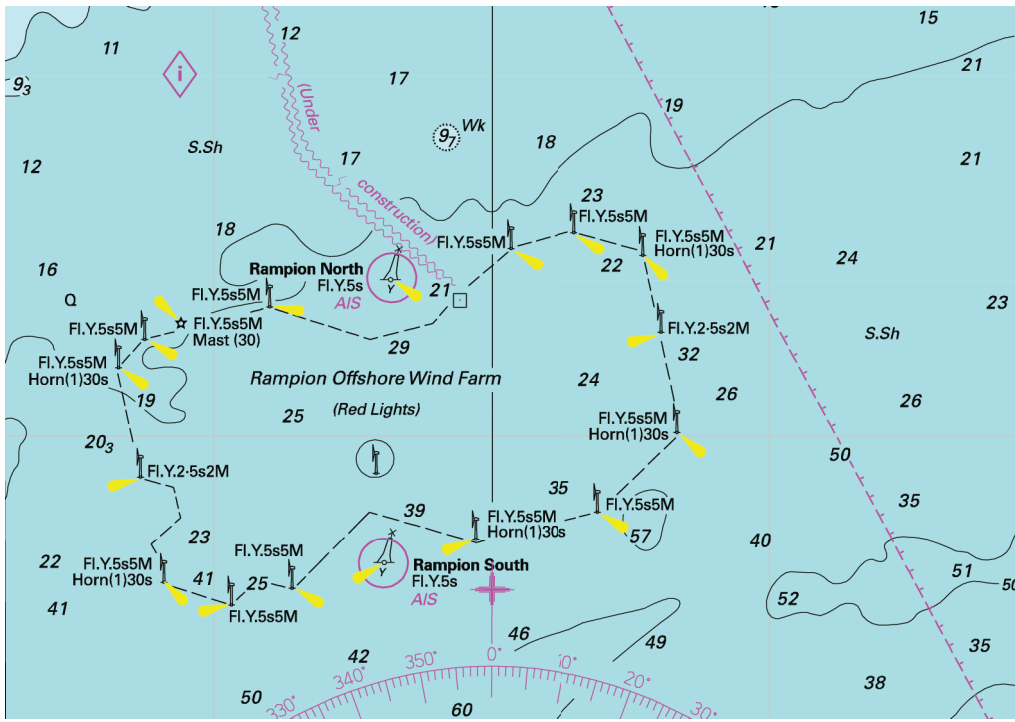
Delete Lt Oc.10s8m4M (Oc Plan B) in 51°19'64N 1°25'36E (ILNW 240/18)

Chart 2100.12

Edition 2018

1 Brighton Marina (Plan B)

Insert lgd *Works in progress (2018)* centred on 50°48'66N 0°06'43W (ILNW 450/18)



Block correction for 2100.10
ILNW 513/18