

Imray Correction Notice

ICB1-1

06 February 2019

Chart B1 WGS 84

Edition 2013

Versions available:

New Edition (corrected to July 2013)

Update (corrected to October 2017)

Update (corrected to October 2018)

NOTE Below is a complete list of corrections issued since the 2013 edition of this chart was published. Corrections are listed chronologically in ascending order. For Update versions of this chart, please check the bottom left corner of the chart to determine the last applied correction. Any further corrections will be applicable from that point onwards.

1 Vieux Fort Bay (Plan G) (correction superseded - see ILNW 327/15)

Insert building symbol and legend Coastguard in 13°43'·86N 60°57'·96W. Delete legend Coastguard centred on 13°43'·76N 60°57'·64W. (ILNW 263/14)

2 Vieux Fort Bay (Plan G) (correction superseded - see ILNW 327/15)

The coastline between approx. positions 13°43'·75N 60°57'·74W and 13°43'·61N 60°57'·43W has not been reclaimed as charted. This area is still natural beach and is set back up to 100m from the charted position.

Full details will be included on the next edition of this chart. (ILNW 264/14)

3 Vieux Fort Bay (Plan G)

Insert attached block correction centred on 13°43'·68N 60°57'·74W (ILNW 327/15)

4 Laborie Bay (Plan F)

Insert accompanying block correction centred on 13°44'·92N 60°59'·66W (ILNW 453/16)

5 Laborie Bay (Plan F)

Amend YB South mark Lt bn to Q(6)+LFI in 13°44'·82N 60°59'·93W (ILNW 512/16)

6 Laborie Bay & GPS positions (Plan F)

When entering Laborie Bay be aware that a number of groundings and two total losses have been attributed to reliance on chart plotters. While inshore in shallow water, eyeball navigation is essential. (ILNW 598/17)

7 Laborie Bay (Plan F)

Insert day time anchorage symbol in 13°45'·02N 61°00'·11W (ILNW 649/17)

8 AIDS TO NAVIGATION

Charted aids to navigation throughout the Eastern Caribbean should be used with caution. Many aids to navigation either moved or were destroyed during recent hurricanes in this region. The replacements and repositioning of these aids is progressing slowly. Yachtsmen are advised to use visual navigation. (Street 2018) (ILNW 574/18)

9 Laborie S

Insert dangerous underwater Rk sym in 13°44'·21N 60°59'·68W (ILNW 660/18)

10 Grand Cul de Sac Bay (Plan C)

Shallower depths than charted exist in Grand Cul de Sac Bay. Yachtsmen should exercise caution when in this area. Insert label *Less Water* centred on 13°59'·19N 61°00'·82W (ILNW 663/18)

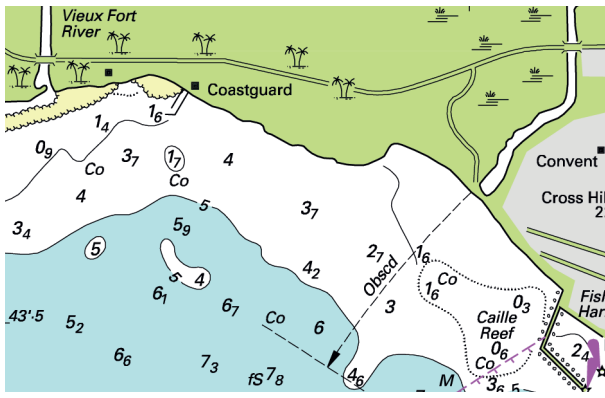
11 Port Castries (Plan B)

Insert foul sym. in 14°00'·90N 60°59'·54W

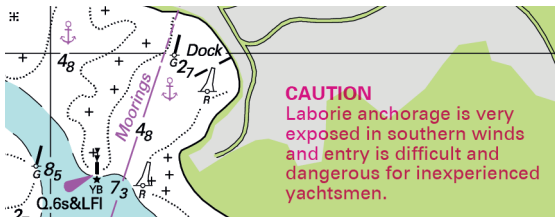
Insert Wk depth:

2·9m in 14°00'·91N 60°59'·59W

3·4m in 14°00'·82N 60°59'·47W (ILNW 63/19)



Block correction for B1 (Plan G)
ILNW 327/15



CAUTION
Laborie anchorage is very exposed in southern winds and entry is difficult and dangerous for inexperienced yachtsmen.

Block correction for B1 (Plan F)
ILNW 453/16