

Imray Correction Notice ICC15-4

1 December 2020

Chart **C15** WGS 84

Edition 2018

Versions available:

New Edition (corrected to May 2018)

Update (corrected to May 2019)

Update (corrected to April 2020)

NOTES

Below is a complete list of corrections issued since the 2018 edition of this chart was published.

Each correction is issued with an ILNW reference number and year.

Corrections are listed chronologically in ascending order.

For Update versions of this chart, please check the bottom left corner of the chart to determine the last applied correction.

Any further corrections will be applicable from that point onwards.

1 **Southampton Water**

Insert accompanying block correction centred on 50°51'·33N 1°21'·91W

Delete:

R port Lt Bn:

Upper Foul Gnd Fl(2)R.10s in 50°53'·53N 1°24'·89W

Lower Foul Ground Fl(2)R.10s in 50°53'·26N 1°24'·55W

starboard Lt Bn Fl.G.1·5s in 50°53'·95N 1°24'·71W

special Lt Bn Fl.G.1·5s in 50°53'·97N 1°24'·61W (ILNW 262/18)

2 **Lymington River (Main chart & Plan D)**

Main chart

Delete depth:

1·6m in 50°45'·51N 1°32'·00W

2·9m in 50°45'·35N 1°31'·72W

Plan D

Insert depth:

2·5m in 50°44'·41N 1°30'·59W

2·4m in 50°44'·33N 1°30'·53W

Replace depth 1·6m with depth 0·9m in 50°45'·51N 1°31'·98W (ILNW 264/18)

3 **Gilkicker Point**

Insert Lt Oc.G.10s in 50°46'·35N 1°08'·47W (ILNW 348/18)

4 **Bramble Bank**

Insert racon sym. plus assoc. lgd AIS at Y Bn **Bramble** (Tide gauge) in 50°47'·41N 1°17'·15W (ILNW 442/18)

5 **Approaches to Portsmouth**

Replace depth 0·6m with depth 0·3m in 50°46'·58N 1°06'·20W (ILNW 516/18)

6 **Beaulieu River (Plan G)**

Insert drying height:

-1·3m in 50°47'·98N 1°25'·23W

-0·2m in 50°46'·95N 1°21'·80W. Extend 0m contour E to enclose. (ILNW 525/18)

7 **Southampton Water**

Amend Lt desc. at G starboard con buoy **Moorhead** Q.G to Fl.G.5s in 50°52'·55N 1°22'·90W (ILNW 578/18)

8 **Thorn Channel**

Delete fog signal:

Bell(1)30s at BY N cardinal pillar Lt buoy **Calshot** in 50°48'·42N 1°17'·03W

Bell at YBY W cardinal pillar Lt buoy **W Bramble** in 50°47'·20N 1°18'·65W (ILNW 643/18)

9 River Hamble (Plan A)

Replace starboard topmark with port topmark at Lt Bn **No 8** in 50°50'·73N, 1°18'·71W (ILNW 677/18)

10 Southampton Water

Delete Lt mooring buoy *Hamble Cliff* in 50°51'·29N 1°20'·55W (ILNW 692/18)

11 Portsmouth Harbour

Insert *Obstn (Broken Piles)*, drying height -3·3m enclosed by dangerline in 50°49'·10N 1°08'·13W (ILNW 728/18)

12 Solent Mark Changes 2019

A number of the SCRA racing buoys have been issued new names for 2019. These changes are as follows:

Hurst to *Chewton Glen* in 50°42'·79N 1°32'·53W

1851 Trust to *Cowes Radio* in 50°44'·83N 1°26'·09W

Dick Johnson to *YachtDataBank* in 50°46'·13N 1°22'·19W

East Bay to *Care Learning Centre* in 50°45'·97N 1°19'·45W

KMS to *CHS* in 50°46'·10N 1°18'·87W

Rigit UK Rigging to *Club2Class.com* in 50°49'·21N 1°17'·46W

Cutter to *Velociwrap Graphics* in 50°49'·45N 1°16'·91W

Robin Culpan to *John Fisher* in 50°48'·46N 1°15'·72W

Quarr to *Regatta Lets* in 50°45'·03N 1°11'·89W

Alfie to *Suffolk Sails* in 50°47'·08N 1°06'·78W

Add name to Y special spher. racing Lt buoy:

Fairhall West in 50°46'·81N 1°10'·40W

SBSC Central in 50°46'·60N 1°09'·85W

Insert Y special spher. racing Lt buoy *NGR* in 50°44'·36N 1°23'·80W

Move Y special spher. racing Lt buoy *elephantboatyard.co.uk* in 50°44'·63N 1°21'·88W to 50°44'·72N 1°21'·95W plus amend name to *Elephant Boatyard*

Delete Y special spher. racing Lt buoy *Newtown East* in 50°44'·18N 1°23'·80W (ILNW 93/19)

13 Bramble Bank

Insert drying height -1·1m in 50°47'·43N 1°17'·43W (ILNW 326/19)

14 Lymington River (Plan D)

Insert depth 0·9m in 50°45'·51N 1°32'·09W (ILNW 327/19)

15 Approaches to Cowes (Plan I)

Yachtsmen are advised that the Small Craft Channel in the eastern approaches to the River Medina has been repositioned, dredged to 2·25m and, renamed as the Eastern Channel. Buoyage has been amended accordingly. A further correction will be issued once full details are known. (ILNW 344/19)

16 Bembridge Harbour (Plan F)

Move G con buoy **11** in 50°41'·71N 1°05'·72W to 50°41'·75N 1°05'·70W (ILNW 451/19)

17 Portsmouth Harbour

Insert minor R Lt in 50°50'·62N 1°06'·69W. This Lt marks the end of a new pontoon emanating from the NW shore in 50°50'·65N 1°06'·74W (ILNW 529/19)

18 Southampton Water

Insert Y special Bn in 50°53'·93N 1°24'·68W

Replace G con buoy with G starboard Bn in 50°52'·22N 1°21'·18W (ILNW 561/19)

19 River Itchen (Plan B)

Delete mooring buoy '**5**' in 50°54'·43N 1°23'·05W (ILNW 562/19)

20 Lymington River

Amend Lt desc. at Lt Bn:

Fl.G.2s to Q.G in 50°45'·15N 1°31'·43W

Fl.G.2s to Q.G in 50°45'·09N 1°31'·13W

Fl.G.2s to Q.G in 50°44'·81N 1°31'·09W

Amend Lt desc. at R can Lt buoy Fl.R.2s to Q.R in 50°44'·81N 1°31'·16W (ILNW 574/19)

21 Lymington River (Plan D)

Insert Y spher. Lt buoy Fl.Y.4s in:

50°45'·20N 1°31'·60W

50°45'·14N 1°31'·48W

Amend Lt desc. at Lt Bn:

No 11 Fl.G.2s to Q.G in 50°45'·15N 1°31'·43W

No 9 Cage Boom Fl.G.2s3M to Q.G.3M in 50°45'·09N 1°31'·13W

Cocked Hat Fl.R.2s to Q.R in 50°45'·06N 1°31'·17W

Tar Barrel Fl.G.2s to Q.G in 50°44'·81N 1°31'·09W

Amend Lt desc. at R can Lt buoy **8A** Fl.R.2s to Q.R in 50°44'·81N 1°31'·16W (ILNW 574/19)

22 River Itchen (Plan B)

Insert mooring buoy '1' in 50°54'·36N 1°23'·14W

Mooring buoy '4' in 50°54'·41N 1°23'·07W is now lit. Add Lt desc Fl.Y.3s (ILNW 583/19)

23 Beaulieu River (Plan G)

Insert lgd *Works* (2019) centred on 50°48'·11N 1°25'·30W

Replace R port Bn **8** with R port Lt Bn **8** Fl.R.4s in 50°47'·03N 1°21'·99W (ILNW 587/19)

24 Cowes & River Medina Approaches

Yachtsmen are advised that the Small Craft Channel in the eastern approaches to the River Medina has been repositioned along a centre line joining approx.:

50°46'·02N 1°17'·44W

50°45'·94N 1°17'·55W

50°45'·78N 1°17'·65W

The channel has been dredged to 2·25m (2019) and, renamed as the Eastern Channel. Buoyage has been amended accordingly.

Replace existing note **COWES SMALL CRAFT CHANNEL** with:

COWES EASTERN CHANNEL

Small craft, less than 20m in length, approaching or departing Cowes from or to the north or east may use the Eastern Channel provided that there is sufficient water in relation to their draught. Tide gauges are situated on Shrape Beacon (50°46'·09N 1°16'·90W) and 4A Beacon (50°45'·75N 1°17'·63W). When there is sufficient water, small craft are advised to use the Eastern Channel in preference to the fairways. Small craft bound to Cowes from Southampton Water are also advised that it is possible to avoid the Precautionary Area by crossing the Solent to the east of the Bramble Bank, setting a course towards the Sharpe Beacon before altering course to the west for the Eastern Channel. (ILNW 620/19)

25 Approaches to Cowes (Plan I)

Insert accompanying block correction centred on 50°45'·92N 1°17'·37W (ILNW 620/19)

26 Lymington River (Plan D)

Delete minor Lt F.Y & assoc. structure colour R in:

50°45'·10N 1°31'·53W

50°45'·09N 1°31'·55W (ILNW 628/19)

27 Lymington River (Plan D)

Insert G starboard Lt Bn **11A** Fl.G.2s in 50°45'·23N 1°31'·57W (ILNW 660/19)

28 Haslar NE

Replace maintained depth 6m with 4m in 50°47'·44N 1°06'·94W (ILNW 682/19)

29 Wootton Creek (Plan K)

Insert lgd *Less water* orientated SW/NE centred on 50°44'·39N 1°12'·27W (ILNW 703/19)

30 Calshot Spit W

Replace Dn sym. with *Obstr* sym. in 50°48'·48N 1°18'·24W

The Calshot Dn has been removed though some debris is reported to exist on the seabed. Yachtsmen are advised to navigate with caution. (ILNW 102/20)

31 Solent Mark Changes 2020

A number of the SCRA racing buoys have been issued new names for 2020. These changes are as follows:

Charles Stanley Wealth Managers to *River Yar Boatyard* in 50°42'·86N 1°29'·40W

Quinell to *Stansore* in 50°47'·07N 1°19'·88W

Care Learning Centre to *East Bay* in 50°45'·97N 1°19'·45W

Party to *Battleflag.co.uk* in 50°46'·10N 1°18'·43W

Club2Class.com to *Chilling* in 50°49'·21N 1°17'·46W

Mike Till to *Jane* in 50°47'·67N 1°17'·00W

Velociwrap Graphics to *Cutter* in 50°49'·45N 1°16'·91W

Fever-Tree to *TeamO Marine* in 50°46'·43N 1°15'·09W

Wightlink to *Velociwrap Graphics* in 50°46'·16N 1°13'·09W

Regatta Lets to *Liam* in 50°45'·03N 1°11'·89W

PSC Parhelion Racing Series to *Portsmouth Sailing Club 1920-2020* in 50°46'·82N 1°07'·35W

Insert Y special spher. racing Lt buoy:

"V" in 50°43'·30N 1°31'·30W

Paul Heys in 50°48'·28N 1°16'·90W

Move Y special spher. racing Lt buoy *Royal Southern* in 50°48'·88N 1°15'·57W to 50°48'·86N 1°15'·43W (ILNW 130/20)

32 Swanwick Marina (Plan A)

Move G starboard minor Lt from 50°52'·82N 1°17'·97W to 50°52'·83N 1°17'·99W

Delete G starboard minor Lt in:

50°52'·86N 1°18'·05W

50°52'·85N 1°18'·03W (ILNW 187/20)

33 Wootton Creek (Plan K)

Move Lt bn:

Wootton Bn Q to 50°44'·53N 1°12'·16W

No.1 F(2)G.5s to 50°44'·40N 1°12'·36W. (ILNW 203/20)

34 Braces Quay E (Plan H)

Insert drying height -0.5m in 50°48'·54N 1°25'·68W and extend 0m contour W to enclose (ILNW 219/20)

35 Fareham Lake

Delete minor green Lt in 50°50'·32N 1°09'·04W (ILNW 316/20)

36 Egypt Point N

Move Y spec spher Lt buoy **CHS** Fl.Y.4s from 50°46'·10N 1°18'·87W to 50°46'·09N 1°18'·70W

Insert Y spec spher buoy in 50°46'·10N 1°18'·87W (ILNW 371/20)

37 Calshot Spit

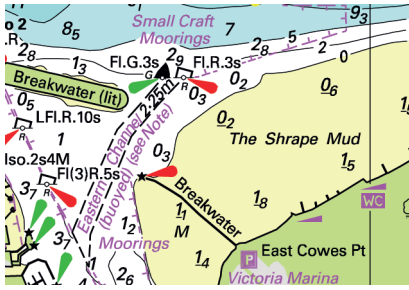
Amend height of Calshot Spit light float from 12m to 5m in 50°48'·35N 1°17'·64W (ILNW 577/20)

38 Portsmouth Harbour

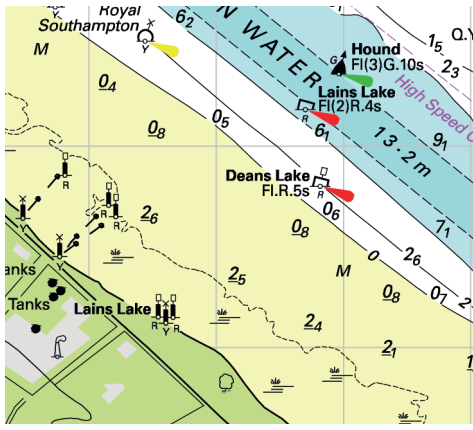
Delete:

Firing Practice Area centred on 50°49'·70N 1°07'·00W

Legend Firing Range (see Note) in 50°49'·53N 1°05'·74W (ILNW 604/20)



Block correction for C15 (Plan I)
ILNW 620/19



Block correction for C15
ILNW 262/18