

Imray Correction Notice ICC26-4

5 February 2021

Chart **C26** WGS 84

Edition 2017

Versions available:

New Edition (corrected to April 2017)

Update (corrected to April 2018)

Update (corrected to February 2021)

NOTES

Below is a complete list of corrections issued since the 2017 edition of this chart was published.

Each correction is issued with an ILNW reference number and year.

Corrections are listed chronologically in ascending order.

For Update versions of this chart, please check the bottom left corner of the chart to determine the last applied correction.

Any further corrections will be applicable from that point onwards.

1 **Ijmuiden (Plan A)**

Insert minor Lt Iso.2s in 52°28'·01N 4°35'·54E (ILNW 209/17)

2 **Brünsbützel (Plan J)**

Insert *Wk* depth 3·8m in 53°53'·27N 9°09'·47E (ILNW 276/17)

3 **Borkum Riffgrund NE** (*correction superseded – see ILNW 599/17*)

Work has begun on the construction of the Merkur Offshore Wind Farm adjacent to Windpark Borkum & Alpha Ventus Wind Farm.

Insert restricted area joining:

54°02'·71N 6°29'·63E

54°05'·68N 6°32'·21E

54°05'·57N 6°34'·27E

54°02'·69N 6°37'·68E

54°01'·30N 6°37'·58E

Add associated *Igd Merkur Offshore Wind Farm under construction (buoyed)*

Delete spar Lt buoy FI(5)Y.20s (4 buoys) in 54°05'·03N 6°29'·32E (ILNW 358/17)

4 **Engelschmangat**

Insert depth 0·1m in 53°11'·46N 4°50'·35E (ILNW 359/17)

5 **Het Rif N**

Insert drying height:

-0·4m in 53°31'·53N 6°03'·76E

-0·1m in 53°29'·73N 6°04'·16E. Delete depth 0·8m close S. (ILNW 411/17)

6 **Tea Kettle Hole E**

Insert lit platform **L13-F-1** in 53°14'·5N 4°04'·9E (ILNW 432/17)

7 **Langeoog NW** (*correction amended see ILNW 196/19*)

Move RW safewater pillar Lt buoy **Accumer Ee** Iso.8s in 53°47'·09N 7°26'·61E to 53°46'·79N 7°23'·95E (ILNW 519/17)

8 **Brunsbützel (Plan J)**

Insert minor Lt star F in:

53°53'·40N 9°08'·36E

53°53'·32N 9°08'·22E (ILNW 531/17)

9 **Approaches to the Jade & Weser** (*correction amended see - ILNW 196/19 & 5/21*)

Move RW safewater pillar Lt buoy **Harle** Iso.8s in 53°49'·25N 7°50'·47E to 53°49'·18N 7°47'·39E (ILNW 547/17)

10 **Borkum Riffgrund NE** – (*correction amended see ILNW 392/18*)

Insert accompanying block correction centred on 54°00'·36N 6°32'·53E (ILNW 599/17)

11 Noordzeekanaal, Middelste Sluiseiland (Plan A)

Delete Lt Iso.2s in 52°28'·02N 4°35'·87E (ILNW 635/17)

12 Westerems (correction amended – see ILNW 528/18)

Insert racon sym. & assoc. lgd AIS at RW safe water pillar buoy **Westerems** Iso.4s in 53°36'·93N 6°19'·41E (ILNW 685/17)

13 Gode Wind Farm

Delete lgd *Under construction(buoyed)* centred on 54°03'·87N 6°59'·80E (ILNW 687/17)

14 German Bight Western Approach N (Correction amended - see ILNW 222/18 & 441/20)

Work has begun on the construction of the EnBW Hohe See Wind Farm S of Global Tech 1 Wind Farm.

Insert restricted area joining:

54°27'·40N 6°24'·00E

54°22'·86N 6°22'·47E

54°27'·58N 6°15'·05E

54°29'·40N 6°18'·21E

Add associated lgd *EnBW Hohe See Wind Farm under construction (buoyed)*. (ILNW 95/18)

15 TSS Off Texel S

Delete racon sym and assoc. lgd Racon(D) at YBY W cardinal pillar Lt buoy VQ(9)10s in 52°45'·9N 4°11'·9E (ILNW 115/18)

16 Brunsbüttel (Plan J)

Insert Y Lt stake F(5)Y.20s Tide gauge in 53°53'·27N 9°08'·92E (ILNW 135/18)

17 Nordsee One Wind Farm

The Nordsee One Wind Farm is now fully commissioned.

Delete lgd *Under const'n (buoyed)* centred on 53°58'·9N 6°49'·6E (ILNW 140/18)

18 Bard Offshore 1 & Veja Mate Wind Farm

Construction work on the Bard Offshore 1 & Veja Mate Wind Farms is now complete. Delete lgd *under construction* centred on:

54°19'·5N 5°58'·8E

54°18'·1N 5°52'·0E (ILNW 213/18)

19 Borkum Riffgrund N(Correction amended see ILNW 441/20)

Work has begun on the construction of the Albatros Wind Farm adjacent to the Global Tech 1 and EnBW Hohe See Wind Farms.

Insert restricted area joining:

54°27'·60N 6°14'·90E (existing limit)

54°29'·40N 6°12'·05E (N extent)

Add associated lgd *Albatros Wind Farm under construction (buoyed)*.

Insert lit platform sym **BORWIN GAMMA** *under const'n* in 54°23'·3N 6°22'·8E

The platform **DoiWin Beta** in 53°58'·7N 6°55'·0E is now lit

Delete former limit of restricted area joining:

54°27'·60N 6°15'·10E

54°29'·40N 6°18'·21E (ILNW 222/18)

20 Borkum Riffgrund NE

Yachtsmen are advised that entry is prohibited throughout the wind farm construction areas centred on 54°00'·00N 6°30'·50E (ILNW 392/18)

21 Süderoogsand (correction amended – see ILNW 81/19)

Insert Lt Iso.WR.6s18m16M/13M in 54°26'·79N 8°29'·17E and add Lt sectors 012° - R - 043° - W - 068° - R - 097° - W - 142°

Delete Lt Iso.WRG.6s18m15-11M in 54°25'·58N 8°28'·66E and delete assoc. Lt sectors. (ILNW 475/18)

22 Schiermonnikoog N

Insert:

BY N cardinal Lt buoy **WNF-N** VQ in 53°42'·28N 6°20'·67E

YB S cardinal Lt buoy **WNF-S** Q(6)+LFI.15s in 53°41'·86N 6°21'·03E (ILNW 485/18)

23 Westerems

Move RW safe water pillar buoy **Westerems** Iso.4s plus racon sym. & assoc. lgd AIS in 53°36'·93N 6°19'·41E to 53°36'·95N 6°17'·74E (ILNW 528/18)

24 Veja Mate Wind Farm W

Work has begun on the construction of a Wind Farm adjacent to Veja Mate Wind Farm.

Insert restricted area joining:

54°20'·6N 5°49'·3E (existing limit)

54°18'·2N 5°43'·9E

54°16'·2N 5°48'·5E

54°16'·3N 5°49'·2E (existing limit)

Add associated lgd *Wind Farm under construction (buoyed)*. (ILNW 535/18)

25 Borkum Riffgrund N

Insert racon sym. and assoc. lgd AIS at platform **BORWIN GAMMA** in 54°23'·3N 6°22'·8E. Delete label *under const'n*. (ILNW 536/18)

26 Mittelhever W

Move RW safe water pillar Lt buoy **Hever** Iso.4s Whis in 54°20'·4N 8°18'·9E to 54°21'·5N 8°18'·8E (ILNW 537/18)

27 Nordsee Ost Wind Farm

Amend lit platform **HelWin alpha** Oc.3sY.16s to **HelWin alpha HelWin beta** 2Oc(3)Y.16s in 54°27'·1N 7°44'·4E. AIS is unchanged. (ILNW 559/18)

28 Bornrif W

Insert dangerous Wk sym. in 53°29'·34N 5°31'·64E (ILNW 562/18)

29 Spiekerooog (*correction amended see ILNW 196/19 & 461/19*)

Move RW safe water pillar Lt buoy **Otzumer Balje** Iso.4s in 53°48'·24N 7°37'·41E to 53°48'·54N 7°40'·35E (ILNW 586/18)

30 Brunsbüttel (Plan J) (*correction amended see ILNW 65/19*)

Amend Lt 2F.G(vert)10m7M to 2F.G(vert)7m7M&Iso.2s17m in 53°53'·25N 9°08'·07E (ILNW 724/18)

31 Jade & Weser Approaches

Replace lgd Racon(T) with Automatic Identification System, AIS, at Lt buoy **Jade-Weser** in 53°58'·3N 7°38'·8E (ILNW 6/19)

32 Jmuiden West Inner TSS

Insert lit platform sym. **Q10-A** in 52°29'·7N 4°12'·9E (ILNW 23/19)

33 Schulpengat

Delete Wk depth 1·8m in 52°54'·79N 4°41'·12E (ILNW 32/19)

34 Brunsbüttel (Plan J) (*correction superseded – see ILNW 274/20, 335/20 and 589/20*)

Amend Lt desc. at Lt star F to Oc(2) in:

53°53'·40N 9°08'·36E

53°53'·32N 9°08'·22E (ILNW 33/19)

35 Brunsbüttel (Plan J) (*correction amended ILNW 629/19 & 335/20*)

Amend Lt 2F.G(vert)7m7M&Iso.2s17m to Iso.Y.2s13m in 53°53'·25N 9°08'·07E plus delete G Lt sector. (ILNW 65/19)

36 Zanddijk Grote Kaap W

Replace lit platform **Halfweg** with circular dangerline & lgd *Obstn* in 52°52'·9N 4°19'·1E (ILNW 75/19)

37 Süderoogsand

There have been changes to the Lt sectors at Lt Iso.WR.6s18m16M/13M in 54°26'·79N 8°29'·17E. The Lt sectors are now 271° - W - 339° - R - 001° - W - 016° - R - 049° - W - 068° - R - 097° - W - 142° (ILNW 81/19)

38 Borkumriffgrund N

Insert Y spar Lt buoy FI(5)Y.20s *Mess-G (2 Buoys)* in 54°15'·72N 6°21'·38E (ILNW 102/19)

39 Elbe Approaches

Delete racon sym. and assoc. lgd Racon(T) at RW safe water pillar Lt buoy **Elbe** Iso.10s in 53°59'·96N 8°06'·51E (ILNW 104/19)

40 St Peter-Ording

There have been changes to the Lt sectors at Lt **St Peter** LFI(2)WR.15s23m18m16M/13M in 54°17'·24N 8°39'·13E. The Lt sectors are now 334° - R - 052° - W - 080° - R - 091° - W - 120° (ILNW 121/19)

41 Alte Weser

Move RW safe water pillar Lt buoy **ST** Iso.8s in 53°56'·26N 7°54'·81E to 53°56'·37N 7°55'·60E (ILNW 190/19)

42 Approaches to the Jade (*correction amended see 461/19, 276/20 and 5/21*)

Move RW safe water pillar Lt buoy:

Accumer Ee Iso.8s in 53°46'·79N 7°23'·95E to 53°46'·97N 7°25'·60E

Otzumer Balje Iso.4s in 53°48'·54N 7°40'·35E to 53°48'·10N 7°36'·36E

Harle Iso.8s in 53°49'·18N 7°47'·39E to 53°49'·20N 7°48'·91E (ILNW 196/19)

43 Brunsbüttel (Plan J)

Delete Y Lt tide gauge sym. FI(5)Y.20s in 53°53'·26N 9°07'·48E (ILNW 293/19)

44 Jmuiden (Plan A)

Delete Y con Lt buoy **NK7** FI.Y.5s in 52°28'·05N 4°35'·00E (ILNW 294/19)

45 Borkum NW

Insert obstruction sym & lgd *Obstrn* in 53°45'·89N 6°32'·46E (ILNW 348/19)

46 Spiekeroog (*corrected amended ILNW 461/20*)

Move RW safe water pillar Lt buoy **Otzumer Balje** Iso.4s in 53°48'·10N 7°36'·36E to 53°48'·04N 7°35'·76E (ILNW 461/19)

47 Brunsbüttel (Plan J) (*correction amended ILNW 335/20*)

Insert YB S cardinal pillar Lt buoy VQ(6)+LFI.10s in:

53°53'·22N 9°08'·12E

53°53'·22N 9°08'·21E

Insert minor Y Lt F in:

53°53'·28N 9°08'·82E

53°53'·28N 9°08'·85E (ILNW 629/19)

48 Off Texel TSS

Delete lit platform **Logger** & assoc. racon sym. Racon(X) in 53°00'·8N 4°13'·0E plus availability of racon sector lines (ILNW 687/19)

49 Brunsbüttel (Plan J)

Amend Lt 2F.R.14m10M to 2F.RG.14m10M in 53°53'·25N 9°08'·24E. There have been changes to the Lt sectors as follows:
090° - G - 022° - R - 277° (ILNW 706/19)

50 Jmuiden (Plan A)

Delete mooring buoy in:

52°28'·20N 4°34'·96E

52°28'·23N 4°35'·00E (ILNW 134/20)

51 Borkumriffgrund

Insert Y special pillar Lt buoy:

ODAS FI(5)Y.20s in 53°57'·0N 6°13'·3E

Q in 53°55'·0N 6°16'·7E

Insert limit of restricted area, entry prohibited, joining:

53°57'·0N 6°13'·3E

53°57'·0N 6°20'·1E

53°53'·0N 6°20'·1E

53°53'·0N 6°13'·3E

Add associated lgd *Research Area*. (ILNW 162/20)

52 Den Helder W

Delete Lt F.WR.27m14/11M in 52°57'·14N 4°43'·30E (ILNW 182/20)

53 Jmuiden (Plan A)

Delete minor Lt F in 52°28'·11N 4°37'·12E (ILNW 191/20)

54 Helgoland S

Insert YB S card. Lt buoy **Helgoland-S** Q(6)+LFI.15s in 54°09'·00N 7°50'·30E

Move YBY W card. Lt buoy **Helgoland-W** from 54°10'·61N 7°48'·17E to 54°09'·80N 7°47'·30E (ILNW 265/20)

55 **Brunsbüttel (Plan J) (Correction amended see ILNW 589/20)**
Amend Lt from Oc(2) to VQ(9) in 53°53'·40N 9°08'·36E (ILNW 274/20)

56 **Baltrum N**
Move RW safe water pillar Lt buoy **Accumer Ee** Iso.8s in 53°46'·97N 7°25'·60E to 53°46'·62N 7°24'·02E (ILNW 276/20)

57 **Vlieland Gronden, Texel NW**
Delete lit platform:
L10-G in 53°29'·4N 4°11'·7E
L10-D in 53°24'·5N 4°12'·8E
L10-C in 53°23'·6N 4°12'·1E (ILNW 327/20)

58 **Brunsbüttel (Plan J) (Correction amended see ILNW 639/20)**
Insert YBY W card Lt buoy Q(9)15s in 53°53'·33N 9°08'·21E. Del Lt Oc(2) close SE.
Replace Lt Iso.Y.2s13m with Obstn sym in 53°53'·25N 9°08'·07E
Move YB S card Lt buoy VQ(6)+LFI.10s from:
53°53'·22N 9°08'·12E to 53°53'·24N 9°08'·06E
53°53'·22N 9°08'·21E to 53°53'·24N 9°08'·15E (ILNW 335/20)

59 **Norderney Approaches (Plan F) (Correction amended see ILNW 68/21)**
Insert label *Less water* centred on 53°43'·95N 7°07'·85E
Move:
G pillar Lt buoy **S1** Oc(2)G.9s to 53°44'·09N 7°03'·93E
R spar buoy **S2** to 53°43'·72N 7°05'·57E
R spar buoy **S4** to 53°43'·46N 7°06'·67E
R spar buoy **S6** to 53°43'·31N 7°07'·38E
GRG pillar Lt buoy **D5/S8** FI(2+1)G.15s to 53°43'·18N 7°07'·95E
Replace con buoy **D1** with G pillar Lt buoy **D1** FI(2)G.9s in 53°43'·61N 7°10'·67E
Delete BYB E cardinal spar buoy in 53°43'·95N 7°08'·87E (ILNW 436/20)

60 **Borkum Riffgrund N**
Work has been completed on the Albatros and EnBW Hohe See Wind Farms centred on 54°27'·6N 6°18'·2E. Delete associated lgds *under construction (buoyed)*. (ILNW 441/20)

61 **Spiekeroog**
Move RW safewater Lt buoy **Otzumer Balje** from 53°48'·04N 7°35'·76E to 53°48'·26N 7°36'·17E (ILNW 461/20)

62 **Borkum Yacht Harbour (Plan E)**
Insert depth 1·5m in 53°33'·88N 6°45'·52E. Delete depth 2·3m close S (ILNW 498/20)

63 **Borkum Yacht Harbour (Plan E)**
Insert foul sym. in 53°33'·25N 6°43'·88E (ILNW 501/20)

64 **Norderney Approaches, Dovetief (Plan F)**
Insert depth 1·7m in 53°43'·75N 7°10'·99E. Delete depth 2·3m close W (ILNW 503/20)

65 **Ijmuiden SW**
Insert lit platform symbol in 52°19'·17N 4°02'·59E (ILNW 554/20)

66 **Friesland TSS N**
Insert Y spec pillar Lt buoy ODAS FI(5)Y.20s in 54°14'·50N 5°59'·90E (ILNW 561/20)

67 **Brunsbüttel (Plan J)**
Replace minor Lt star VQ(9) with YBY W cardinal pillar Lt buoy Q(9)15s in 53°53'·40N 9°08'·36E (ILNW 589/20)

68 **Ijmuiden (Plan A)**
Insert minor Lt F in 52°28'·06N 4°37'·42E (ILNW 592/20)

69 **Ijmuiden (Plan A)**
Delete Y special spar Lt buoy FI(3)Y in 52°27'·90N 4°36'·95E (ILNW 609/20)

70 **Brunsbüttel (Plan J)**

Delete obstn sym in 53°53'·25N 9°08'·07E (ILNW 639/20)

71 **Terschelling German Bight TSS**

Remove the topmark from safewater Lt buoy:

TGA in 53°50'·20N 6°41'·20E

TGB in 53°53'·10N 7°00'·70E

TGC in 53°55'·60N 7°19'·50E (ILNW 640/20)

72 **Vlieland North TSS W**

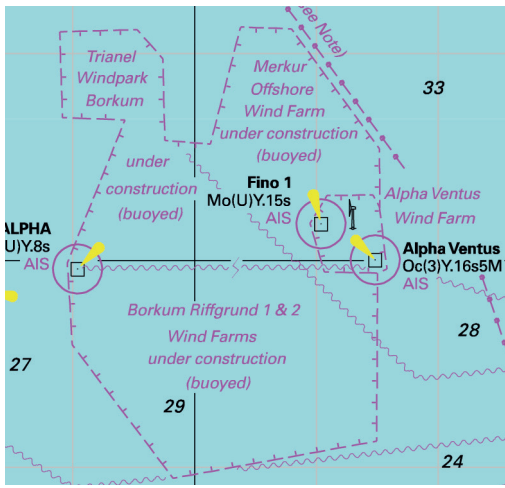
Replace Racon(G) with AIS at lit platform **L8-G** in 53°34'·87N 4°36'·25E (ILNW 3/21)

73 **Spiekeroog N**

Move RW safewater buoy **Harle** Iso.8s from 53°49'·20N 7°48'·91E to 53°49'·38N 7°46'·40E (ILNW 5/21)

74 **Norderney Approaches (Plan F)**

Move GRG pillar Lt buoy **D5/S8** Fl(2+1)G.15s to 53°43'·32N 7°08'·05E (ILNW 68/21)



Block correction for C26
ILNW 599/17