

# Imray Correction Notice ICC28-4

10 September 2020

## Chart **C28** WGS 84 Edition 2017

*Versions available:*

*New Edition (corrected to September 2017)*

*Update (corrected to September 2018)*

*Update (corrected to September 2019)*

### NOTES

*Below is a complete list of corrections issued since the 2017 edition of this chart was published.*

*Each correction is issued with an ILNW reference number and year.*

*Corrections are listed chronologically in ascending order.*

*For Update versions of this chart, please check the bottom left corner of the chart to determine the last applied correction.*

*Any further corrections will be applicable from that point onwards.*

#### 1 **Approaches to Harwich**

Replace Whis with Bell at YB S card pillar Lt buoy **S Bawdsey** Q(6)+LFI.15s in 51°57'·23N 1°30'·22E (ILNW 650/17)

#### 2 **Aldeburgh Ridge (Main chart & Plan F)**

Insert depth 1·0m in in 52°07'·48N 1°37'·30E. Delete depth 1·6m close NE (ILNW 679/17)

#### 3 **Newcome Sand E**

Move R port pillar Lt buoy **Newcome Sand** Q.R in 52°26'·27N 1°46'·98E to 52°26'·33N 1°47'·16E (ILNW 702/17)

#### 4 **Approaches to Lowestoft**

Delete *Wk (buoyed)* depth 5·1m in 52°25'·23N 1°49'·67E (ILNW 2/18)

#### 5 **River Yare (Plan C)**

Insert Lts:

Fl.R.3s in 52°34'·97N 1°43'·80E

Fl.R.2s in 52°34'·80N 1°43'·88E

Fl.G.2s in 52°34'·77N 1°43'·97E (ILNW 133/18)

#### 6 **Wells-next-the-Sea (Plan A)**

There has been a change in the navigable channel at the entrance to Wells-next-the-Sea; buoyage has been adjusted accordingly.

Move R can Lt buoy **North Outer** in 52°59'·55N 0°50'·77E to 52°59'·42N 0°50'·50E

Yachtsmen are advised to navigate with caution in the area and contact Wells Harbour Commissioners for the latest information. (ILNW 163/18)

#### 7 **Orford Haven (Plan F) (correction amended see ILNW 170/19, 245/20)**

Move:

R can buoy **Oxley** to 52°02'·08N 1°27'·71E

G con. buoy **Weir** to 52°02'·27N 1°27'·61E

For detailed information about the River Ore entrance yachtsmen are advised to consult the accompanying chartlet (revised 03/18) (ILNW 220/18)

#### 8 **Woodbridge Haven (Plan G) (correction amended see ILNW 171/19, 244/20)**

Move:

R can buoy in 51°59'·33N 1°23'·56E to 51°59'·29N 1°23'·52E

R can buoy **Knoll Spit** to 51°58'·52N 1°23'·23E

G con. buoy **Mid Knoll** to 51°58'·65N 1°23'·34E

For detailed information about the River Deben entrance yachtsmen are advised to consult the accompanying chartlet (revised 03/18) (ILNW 221/18)

## 9 Holm Channel & Holm Sand

Move G con Lt buoy:

**W Holm** in 52°29'·80N 1°47'·10E to 52°29'·50N 1°46'·99E

**NW Holm** in 52°31'·94N 1°46'·68E to 52°31'·47N 1°46'·59E

Move cardinal pillar Lt buoy:

**N Holm** in 52°33'·93N 1°47'·22E to 52°33'·73N 1°47'·29E

**S Corton** in 52°32'·90N 1°48'·98E to 52°33'·24N 1°48'·47E

Move R can Lt buoy **NE Holm** in 52°32'·69N 1°48'·48E to 52°32'·80N 1°48'·54E (ILNW 435/18)

## 10 Holm Sand (Plan D)

Move G con Lt buoy **W Holm** in 52°29'·80N 1°47'·10E to 52°29'·50N 1°46'·99E (ILNW 435/18)

## 11 Whiting Bank (Main chart & Plan F)

Insert dangerous Wk sym in 52°01'·66N 1°30'·82E (ILNW 436/18)

## 12 Lowestoft Harbour (Plan H)

The pontoons have been reconfigured in Hamilton Dock. Two new pontoons emanate from the W quay. Insert Lt Fl.Y.2·5s in:

52°28'·58N 1°45'·45E (S pontoon head)

52°28'·59N 1°45'·47E (N pontoon head)

One pontoon from the N quay has been removed. Delete Lt Fl.Y.4s in 52°28'·58N 1°45'·46E (W pontoon head) (ILNW 583/18)

## 13 Lowestoft Harbour (Plan H)

Insert minor Lt 4xIso.Y in 52°28'·37N 1°44'·98E (ILNW 42/19)

## 14 Holm Channel

Move R can Lt buoy **NE Holm** Fl.R.2·5s in 52°32'·80N 1°48'·54E to 52°32'·92N 1°48'·49E (ILNW 82/19)

## 15 Galloper Wind Farm

Construction work on the Galloper Wind Farm is now complete.

Delete:

Igd *Under Const'n (2016-2018) (buoyed)* centred on 51°57'·5N 2°01'·2E

BY N cardinal pillar Lt buoy VQ in 52°00'·06N 1°59'·33E

Y special pillar Lt buoy Fl.Y.5s in 51°59'·81N 2°02'·76E (ILNW 166/19)

## 16 Orford Haven (Plan F) (correction amended see ILNW 245/20)

Move G con. buoy **Weir** to 52°02'·32N 1°27'·59E

For detailed information about the River Ore entrance yachtsmen are advised to consult the accompanying chartlet (revised 03/19) (ILNW 170/19)

## 17 Woodbridge Haven (Plan G) (correction amended see ILNW 244/20)

Move:

R can buoy **Knoll Spit** to 51°58'·48N 1°23'·23E

G con. buoy **Mid Knoll** to 51°58'·60N 1°23'·29E

For detailed information about the River Deben entrance yachtsmen are advised to consult the accompanying chartlet (revised 03/19) (ILNW 171/19)

## 18 Greater Gabbard Wind Farm

Delete Lt Fl.Y.5s and assoc. fog signal, Horn(1)10s, at wind turbine in:

51°55'·42N 1°59'·25E

51°58'·65N 1°59'·43E

Delete Lt Fl.Y.5s at wind turbine in 51°56'·48N 1°59'·90E (ILNW 249/19)

## 19 Sheringham Shoal NW

Move Y spher. Lt buoy Fl(5)Y.20s in 53°03'·42N 1°06'·68E to 53°03'·45N 1°06'·21E plus delete assoc. Igd PA (ILNW 120/20)

## 20 Lowestoft (Main chart and Plan D)

Amend Lt sectors at Lt Dir.WRG.17m10M in 52°27'·71N 1°44'·54E from 222°-G-224°-W-229°-R-232° to 222°-G-226°-W-230°-R-232°. (ILNW 202/20)

## 21 Woodbridge Haven (Plan G)

Move:

G con. buoy **Mid Knoll** to 51°58'·58N 1°23'·24E

R can buoy **Knoll Spit** to 51°58'·52N 1°23'·18E

R can buoy **West Knoll** to 51°58'·43N 1°23'·07E

An official survey will be carried out in due course. When this data becomes available an updated chartlet will be issued.

22 **Orford Haven (Plan F)** (*Correction amended INLW 366/20*)

Move:

R can buoy **Oxley** to 52°02'·02N 1°27'·96E

G con. buoy **Weir** to 52°02'·22N 1°27'·56E

An official survey will be carried out in due course. When this data becomes available an updated chartlet will be issued.  
(ILNW 245/20)

23 **Great Yarmouth E**

Move YB S cardinal Lt buoy **Barley** to 52°38'·50N 1°52'·96E (ILNW 264/20)

24 **Haisborough Sand**

Insert depth 0.4m in 52°52'·80N 1°46'·20E

Replace depth:

0.9m with 0.2m in 52°55'·10N 1°41'·80E

3.7m with 2.7m in 52°57'·60N 1°40'·40E (ILNW 282/20)

25 **Wells-next-the-Sea (Main chart & Plan A)**

Move YBY W card Lt buoy Q(9)15s from 52°59'·73N 0°50'·52E to 52°59'·68N 0°50'·24E (ILNW 326/20)

26 **Orford Haven (Plan F)**

Move G con. buoy **Weir** to 52°02'·20N 1°27'·58E (ILNW 366/20)

27 **Approaches to Great Yarmouth**

Move G con Lt buoy **NW Holm** Fl(4)G.15s from 52°31'·47N 1°46'·58E to 52°30'·90N 1°46'·50E (ILNW 450/20)

28 **Ordford Ness (Main chart & Plan F)**

Delete Lighthouse (disused) in 52°05'·03N 1°34'·45E (ILNW 451/20)



Depths in Metres

This chart is a free download  
**NOT TO BE USED FOR NAVIGATION**



**Caution**

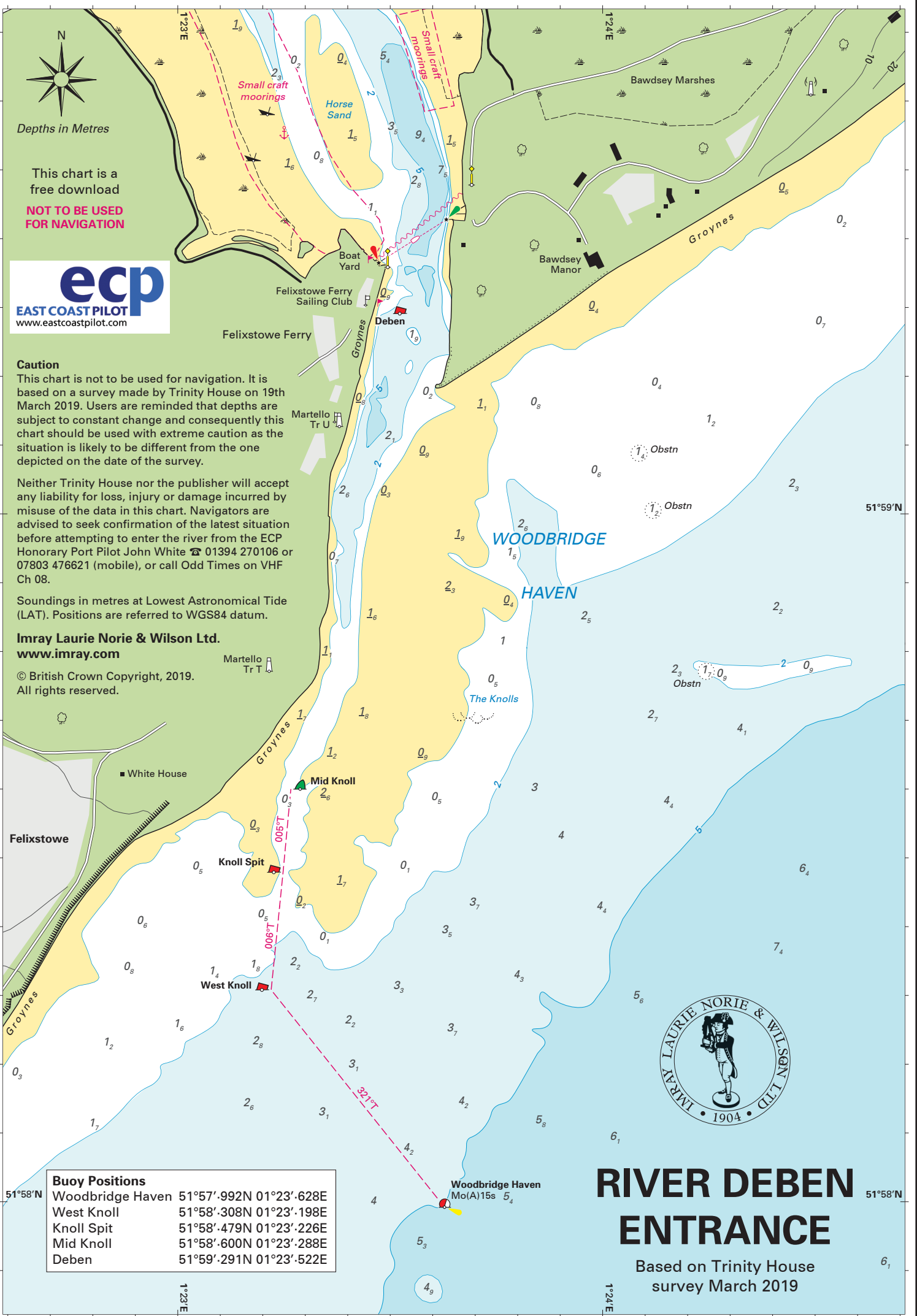
This chart is not to be used for navigation. It is based on a survey made by Trinity House on 19th March 2019. Users are reminded that depths are subject to constant change and consequently this chart should be used with extreme caution as the situation is likely to be different from the one depicted on the date of the survey.

Neither Trinity House nor the publisher will accept any liability for loss, injury or damage incurred by misuse of the data in this chart. Navigators are advised to seek confirmation of the latest situation before attempting to enter the river from the ECP Honorary Port Pilot John White ☎ 01394 270106 or 07803 476621 (mobile), or call Odd Times on VHF Ch 08.

Soundings in metres at Lowest Astronomical Tide (LAT). Positions are referred to WGS84 datum.

**Imray Laurie Norie & Wilson Ltd.**  
[www.imray.com](http://www.imray.com)

© British Crown Copyright, 2019.  
All rights reserved.



Buoy Positions	
Woodbridge Haven	51°57'.992N 01°23'.628E
West Knoll	51°58'.308N 01°23'.198E
Knoll Spit	51°58'.479N 01°23'.226E
Mid Knoll	51°58'.600N 01°23'.288E
Deben	51°59'.291N 01°23'.522E



# RIVER DEBEN ENTRANCE

Based on Trinity House survey March 2019

**Caution**

This chart is not to be used for navigation. It is based on a survey made by Trinity House on 20th March 2019. Users are reminded that depths are subject to constant change and consequently this chart should be used with extreme caution as the situation is likely to be different from the one depicted on the date of the survey.

Neither Trinity House nor the publisher will accept any liability for loss, injury or damage incurred by misuse of the data in this chart. Navigators are advised to seek confirmation of the latest situation before attempting to enter the river from the ECP Honorary Port Pilot and Orford Harbourmaster Philip Attwood ☎ 07528 092635, or call *Chantry* on VHF Ch 08 (although note that he is based at Orford and may be out of radio range from the river entrance).

Soundings in metres at Lowest Astronomical Tide (LAT). Positions are referred to WGS84 datum.

**Imray Laurie Norie & Wilson Ltd.**  
[www.imray.com](http://www.imray.com)

© British Crown Copyright, 2019.

All rights reserved.



52°03'N

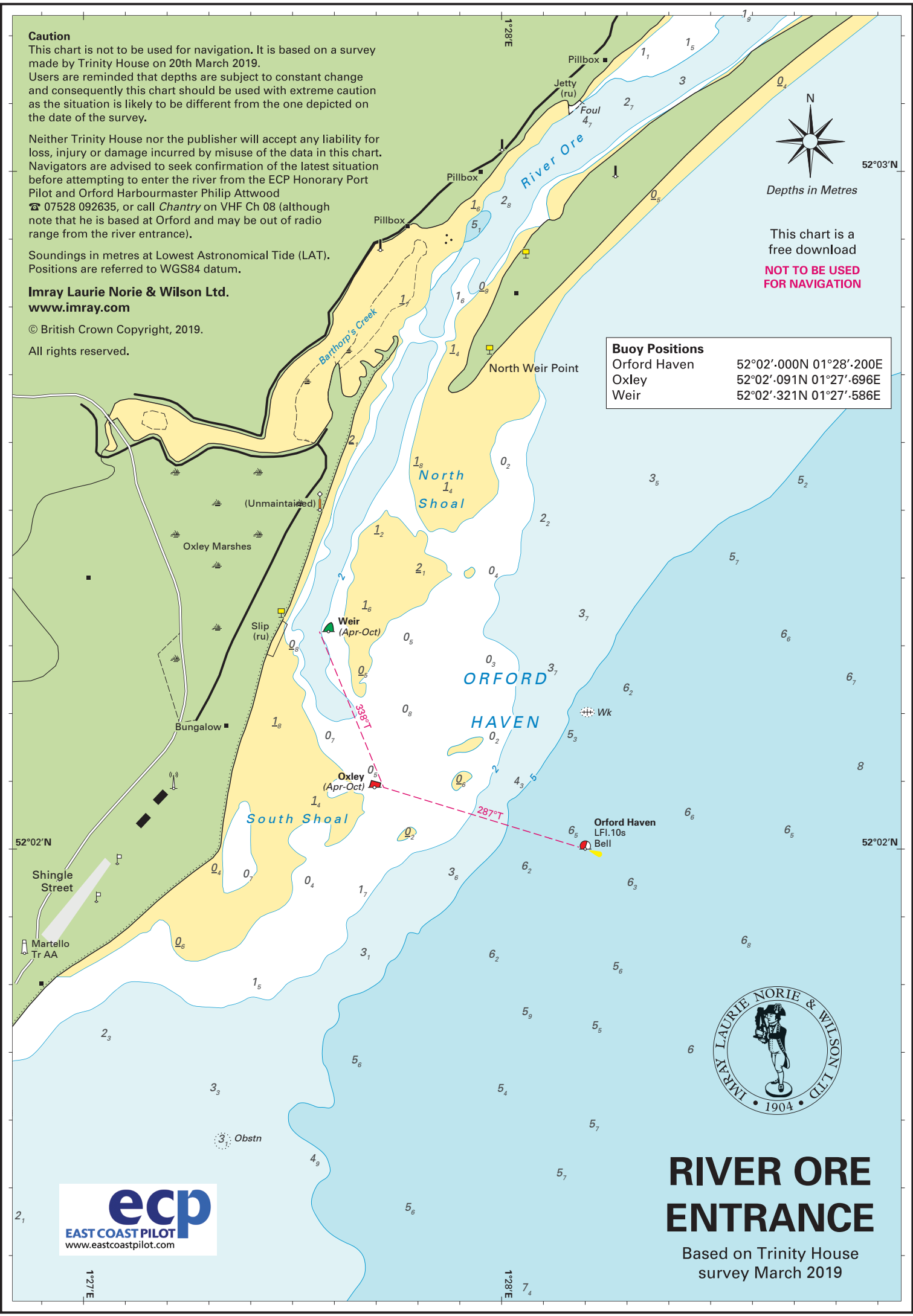
Depths in Metres

This chart is a free download

**NOT TO BE USED FOR NAVIGATION**

**Buoy Positions**

Orford Haven	52°02'.000N 01°28'.200E
Oxley	52°02'.091N 01°27'.696E
Weir	52°02'.321N 01°27'.586E



52°02'N

52°02'N

Shingle Street

Martello Tr AA

Bungalow

South Shoal

Weir (Apr-Oct)

Oxley (Apr-Oct)

ORFORD HAVEN

North Shoal

North Weir Point

Orford Haven LFI.10s Bell

Wk

Oxley

Slip (ru)

(Unmaintained)

Oxley Marshes

River Ore

Barthorp's Creek

Pillbox

Jetty (ru)

Foul

4.7

Pillbox

1.6

2.8

5.1

0.9

1.4

1.8

0.2

2.2

3.7

6.2

6.7

8

3.7

0.3

0.2

0.5

4.3

6

6.2

6.3

6.6

6.8

6

5.9

5.5

6

5.4

5.7

5.7

5.6

5.6

4.9

5.6

5.6

5.6

5.6

5.6

5.6

5.6

5.6

5.6

5.6

5.6

5.6

5.6

5.6

5.6

5.6

5.6

5.6

5.6

5.6

5.6

5.6

5.6

5.6

5.6

5.6

5.6

5.6

5.6

5.6

5.6

5.6

5.6

5.6

5.6

5.6

5.6

5.6

5.6

5.6

5.6

5.6

5.6

5.6

5.6

5.6

5.6

5.6

5.6



# RIVER ORE ENTRANCE

Based on Trinity House survey March 2019

1°27'E

1°28'E

7.4