

# Imray Correction Notice ICC38-2

4 February 2021

## Chart **C38** WGS 84

*Edition 2016*

*Versions available:*

*New Edition (corrected to April 2016)*

*Update (corrected to July 2017)*

*Update (corrected to July 2018)*

*Update (corrected to July 2019)*

*Update (corrected to February 2021)*

### NOTES

*Below is a complete list of corrections issued since the 2016 edition of this chart was published.*

*Each correction is issued with an ILNW reference number and year.*

*Corrections are listed chronologically in ascending order.*

*For Update versions of this chart, please check the bottom left corner of the chart to determine the last applied correction.*

*Any further corrections will be applicable from that point onwards.*

#### 1 **Pointe de Gâvres SE and Presqu'île de Quiberon N**

Insert Y special can Lt buoy Fl.Y.4s in:

47°39'·50N 3°19'·29W

47°39'·83N 3°17'·12W

47°39'·49N 3°16'·45W

47°38'·34N 3°17'·06W

47°35'·66N 3°10'·22W

47°34'·47N 3°12'·16W (ILNW 366/16)

#### 2 **Automatic Identification Systems (Main chart & Plan F)**

Insert racon sym. & assoc. lgd AIS at Lt:

**Les Moutons** in 47°46'·48N 4°01'·69W (Main chart)

**Penfret** in 47°43'·26N 3°57'·19W (Main chart & Plan F)

**Birvideaux** in 47°29'·15N 3°17'·47W (Main chart) (ILNW 563/16)

#### 3 **Îles de Glénan (Main chart & Plan F)**

Insert rock which covers and uncovers sym. enclosed by dangerline in:

47°43'·48N 4°01'·01W (Main chart & Plan F)

47°43'·07N 4°00'·92W (Main chart & Plan F)

47°42'·17N 4°00'·13W (Main chart)

Delete sounding 0·3 close by (Plan F)

Insert rock awash sym. enclosed by dangerline in 47°42'·19N 4°00'·48W (Main chart) (ILNW 574/16)

#### 4 **Anse de Bénodet** (*correction superseded – see ILNW 354/17*)

Insert underwater rock sym. enclosed by dangerline in:

47°50'·61N 4°09'·44W

47°50'·57N 4°09'·43W (ILNW 584/16)

#### 5 **Concarneau (Plan B)**

Move G con. buoy with triangle topmark from 47°51'·86N 3°54'·98W to 47°51'·87N 3°54'·91W (ILNW 606/16)

#### 6 **Quiberon S**

Insert racon sym. & assoc. lgd AIS at Lt DirQ.G.5m16M in 47°28'·62N 3°07'·19W (ILNW 3/17)

#### 7 **Port Maria**

Amend Lt to Oc(2)G&R in 47°28'·58N 3°07'·36W (ILNW 127/17)

#### 8 **Loctudy** (*correction superseded – see ILNW 354/17*)

Amend duration of Lt to 15s in 47°49'·88N 4°09'·56W (ILNW 325/17)

**9 Loctudy**

Insert accompanying block correction centred on 47°49'·35N 4°08'·69W (ILNW 354/17)

**10 Trévignon W**

Insert circular dangerline and legend *Obstn* in 47°48'·05N 3°54'·75W (ILNW 390/17)

**11 Concarneau (Plan B)**

Insert label *Less Water* centred on 47°51'·10N 3°55'·13W

Replace depth:

1·4m with depth 0·7m in 47°51'·45N 3°55'·59W

1·1m with depth 0·5m in 47°51'·28N 3°55'·43W (ILNW 354/18)

**12 L'Aven (Plan C)**

Replace depth 0·6m with depth 0·2m in 47°48'·34N 3°44'·28W (ILNW 355/18)

**13 Doëlan (Plan E)**

Replace depth 0·2m with drying Rk sym. plus assoc. label drying height -0·9m in 47°46'·11N 3°37'·04W (ILNW 356/18)

**14 Îles de Glénan North (Plan F)**

Numerous depths less than charted exist in the vicinity of the Îles de Glénan. The most significant are as follows:

Insert depth:

0·1m in 47°42'·96N 3°59'·08W. Delete depth 0·5m close SW

0·1m in 47°42'·90N 3°57'·15W. Delete depth 0·8m close S

Insert Rk awash sym. in 47°42'·82N 3°57'·16W

Insert drying Rk sym. plus assoc. label drying height:

-1·0m in 47°42'·36N 4°00'·23W

-0·6m in 47°42'·70N 3°57'·10W

Replace depth:

1·4m with depth 0·9m in 47°42'·81N 4°00'·04W

1·6m with depth 0·4m in 47°42'·67N 3°57'·83W

1·0m with depth 0·5m in 47°42'·65N 3°57'·68W

0·5m with drying Rk sym. in 47°42'·46N 3°56'·93W

Yachtsmen are advised to navigate with caution in the area. (ILNW 357/18)

**15 Île de Groix S**

Insert depth 0·1m in 47°36'·96N 3°26'·49W (ILNW 358/18)

**16 Île de Penfret (Plan F)**

Amend range of Lt **Penfret** Q.34m12M to 11M in 47°43'·27N 3°57'·18W. Fl.R Lt & AIS remain unchanged. (ILNW 359/18)

**17 Île de Penfret (Plan F)**

Amend Lt desc.

Fl(2)6s9m3M to Fl(2)6s4m3M at **La Pie** Lt Bn in 47°43'·75N 3°59'·75W

F(3)5s2M to VQ(3)5s2M at BYB E cardinal Lt Bn in 47°43'·27N 3°59'·21W (ILNW 360/18)

**18 Île de Penfret (Main chart & Plan F)**

Amend Lt **Penfret** Fl.R.5s36m21M to Fl.R.6s36m19M (Fl.R.6s19M main chart) in 47°43'·27N 3°57'·18W. Q Lt & AIS remain unchanged. (ILNW 544/18)

**19 Presqu'île de Quiberon, Port Haliguen**

Insert Lt desc. Fl(2)WR.6s10m10/7M at Lt in 47°29'·36N 3°05'·94W (ILNW 137/19)

**20 Lorient (Plan G)**

Insert rock which covers & uncovers plus assoc. drying height -0·1m in 47°43'·78N 3°21'·28W (ILNW 441/19)

**21 Pte du Talut NW**

Delete racon sym. & assoc. lgd AIS at Lt Oc(2)WRG.6s22m11/8M in 47°41'·97N 3°27'·67W (ILNW 152/20)

**22 Quiberon**

Delete AIS from Lt DirQ.G.13m17M in 47°28'·75N 3°07'·16W. Lt characteristics remain unchanged. (ILNW 192/20)

**23 Quiberon**

Delete racon sym and assoc lgd AIS at Lt Dir.Q.G.5m16M in 47°28'·62N 3°07'·19W (ILNW 398/20)

**24 Les Moutons**

Delete AIS at Lt **Les Moutons** Iso.WRG.2s1m15-11M in 47°46'·48N 4°01'·67W (ILNW 495/20)

25 **Quiberon S**

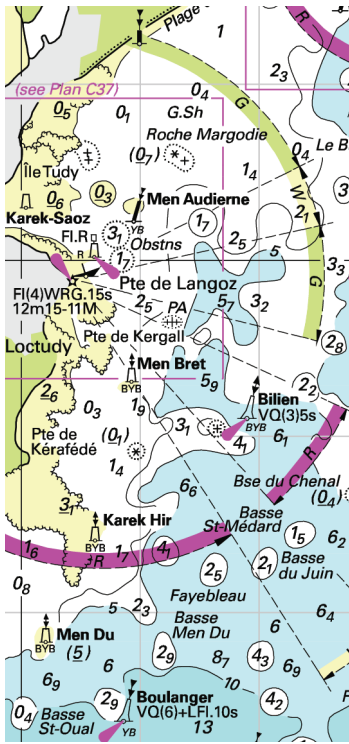
BRB isolated danger buoy **An Tréac'h** is now lit. Add legend FI(2)10s in 47°27'·92N 3°07'·20W (ILNW 506/20)

26 **Île de Penfret (Main chart & Plan F)**

Delete racon sym and assoc lgd AIS at Lt in 47°43'·27N 3°57'·18W (ILNW 530/20)

27 **Lorient SE**

Delete Building (18) and assoc sym in 47°41'·54N 3°18'·59W (ILNW 33/21)



Block correction C38  
ILNW 354/17