

# Imray Correction Notice

17 January 2019

ICC48-3

## Chart C48 WGS 84

Edition 2015

Versions available:

New Edition (corrected to April 2015)

Update (corrected to September 2017)

Update (corrected to September 2018)

**NOTE** Below is a complete list of corrections issued since the 2015 edition of this chart was published. Corrections are listed chronologically in ascending order. For Update versions of this chart, please check the bottom left corner of the chart to determine the last applied correction. Any further corrections will be applicable from that point onwards.

### 1 Ria de Pontevedra (Plan J)

Amend GRG Lt buoy to FI(2+1)G.15s in 42°23'·03N 8°44'·46W. (ILNW 197/15)

### 2 Ria de Vigo (Plan K) (correction superseded – see ILNW 564/17)

Insert BY North pillar Lt buoy Q in 42°13'·45N 8°47'·79W (ILNW 228/15)

### 3 O Grove NE (Plan I)

Insert Y special spherical buoy in 42°30'·45N 8°51'·53W. This unlit buoy marks the new western extent of the marine farm.

Delete Y special spherical Lt buoy close E.

Full details will be shown on the next version of this chart. (ILNW 254/15)

### 4 Marin (Plan J)

Insert minor Lt FI.R.2s5M in 42°24'·00N 8°41'·96W (ILNW 271/15)

### 5 Ria de Arousa, Illa de Sálvora (Plans E & F) (correction amended – see ILNW 363/16)

Insert Y spec spherical Lt buoy ODAS FI(5)Y.20s in 42°26'·84N 9°00'·71W (ILNW 351/15)

### 6 Ria de Muros (Plan D)

Insert Y special can Lt buoy ODAS FI(5)Y.20s in 42°45'·38N 9°01'·46W (ILNW 415/15)

### 7 Porto (Main chart & Plan O)

Delete fog signal Siren(2)30s & assoc sym in 41°08'·80N 8°40'·64W (ILNW 5/16)

### 8 Pova de Varzim & Vila do Conde

Delete fog signal at Lt:

Siren40s in 41°22'·23N 8°46'·29W

Siren30s in 41°20'·17N 8°44'·99W

(ILNW 50/16)

### 9 Vilanova de Arousa N (Plan F & I)

Delete G pillar Lt buoy FI(3)G.10s5M in 42°35'·12N 8°50'·77W (ILNW 69/16)

### 10 Vila do Conde W

Insert islet sym in:

41°23'·69N 8°47'·17W

41°21'·69N 8°45'·91W

41°21'·45N 8°45'·92W

Insert rock that uncovers sym enclosed by dangerline in 41°20'·40N 8°45'·39W

Replace:

Depth 1·8m with *Obstn* 1·3m in 41°21'·03N 8°46'·11W

Depth 1·8m with rock that uncovers sym enclosed by dangerline in 41°20'·62N 8°46'·16W

Depth 0·8m with drying height -0·5m in 41°19'·54N 8°44'·54W (ILNW 112/16)

### 11 Barra di Rio Douro (Plan O)

Insert accompanying block correction centred on 41°08'·74N 8°39'·85W. (ILNW 310/16)

### 12 Ria de Arousa, Illa de Sálvora (Plans E & F) (correction superseded – see ILNW 85/17)

Move Y spec. spher. Lt buoy ODAS FI(5)Y.20s from 42°26'·84N 9°00'·71W to 42°26'·75N 9°00'·21W. (ILNW 363/16)

### 13 Enseada de Vilagarcía (Plan H)

Insert BRB isolated danger Lt beacon FI(2)5s in 42°36'·17N 8°48'·37W. (ILNW 364/16)

### 14 Pta Aguçadoura NW

Delete wind turbine and assoc. lgd in 41°27'·65N 8°51'·00W (ILNW 445/16)

**15 Corcubión SW**

Replace isolated danger bn with W Bn Tr in 42°53'·63N 9°09'·70W (ILNW 581/16)

**16 Ría de Muros (Main chart & Plan D)**

Amend range of Lt FI(2)G to 3M in 42°43'·73N 9°00'·05W (ILNW 582/16)

**17 Cabo Prior S**

Insert racon sym. & assoc. lgd AIS at Lt FI.5s34m23M in 43°27'·53N 8°20'·41W (ILNW 583/16)

**18 Bajo Pejo**

Insert Lt LdgDirIso.WRG.2s10M&Iso.2s10M in 43°19'·60N 8°31'·05W (ILNW 616/16)

**19 Automatic Identification Systems (Plan A)**

Insert racon sym. & assoc. lgd AIS at Lt:

Oc.R.4s5M in 43°20'·39N 8°22'·26W

LFI.8s8M in 43°22'·96N 8°21'·08W

Insert racon sym. & assoc. lgd AIS at Lt buoy FI.R.5s in 43°21'·70N 8°21'·92W (ILNW 617/16)

**20 C. Toriñán**

Insert racon sym. at Lt in 43°03'·21N 9°17'·88W (ILNW 7/17)

**21 Automatic Identification Systems (Main chart & Plans E, F, I & J)**

Insert racon sym. & assoc. lgd AIS at Lt:

FI.5s8M in 42°30'·52N 9°02'·94W (Main chart & Plan E)

FI.R.4s2M in 42°22'·58N 8°55'·74W (Plan J)

Insert racon sym. & assoc. lgd AIS at:

R port pillar Lt buoy FI.R.5s in 42°31'·08N 8°58'·86W (Plans E & F)

G starboard pillar Lt buoy FI.G.5s(5M) in 42°34'·41N 8°53'·91W (Plans F & I) (ILNW 17/17)

**22 Ría de Arousa (Plan F)**

Amend Lt Escarabote FI(2)WR.7s3M to FI(2)R.7s3M in 42°38'·14N 8°54'·06W (ILNW 32/17)

**23 Illa de Ons (Main chart & Plan J)**

**Plan J**

Insert racon sym. & assoc. lgd AIS at R pillar Lt buoy Q.R.6M in 42°24'·76N 8°53'·76W

**Main chart & Plan J**

Insert racon sym. & assoc. lgd AIS at Lt Bn Tr FI.G.5s8M in 42°24'·25N 8°53'·46W (ILNW 41/17)

**24 Baiona W (Main chart & Plans K & L)**

Insert racon sym. & assoc. lgd AIS at N card Lt buoy Q in 42°07'·26N 8°54'·72W (ILNW 59/17)

**25 Ría de Vigo (Main chart & Plan K)**

Insert lgd AIS at Lt:

FI(2)WR.11/9M in 42°14'·97N 8°52'·43W (Main chart)

Iso.2s18M in 42°11'·14N 8°48'·80W (Main chart & Plan K)

Insert racon sym. & assoc. lgd AIS at Lt FI.3s9M in 42°15'·10N 8°52'·37W (Plan K) (ILNW 60/17)

**26 La Coruña (Plan A)**

Move minor Lt FI(4)R.11s in 43°21'·80N 8°23'·76W to 43°21'·79N 8°23'·80W (ILNW 71/17)

**27 Ría de Arousa, Illa de Sálvora (Plans E & F)**

Move Y spec. spher. Lt buoy ODAS FI(5)Y.20s from 42°26'·75N 9°00'·21W to 42°27'·49N 9°00'·17W (ILNW 85/17)

**28 Illa de Sálvora (Main chart & Plans E & F)**

Amend Lt desc. to FI(3+1)20s&FI(3)12·7s+FI.R.7·3s21/18M in 42°27'·97N 9°00'·80W (ILNW 161/17)

**29 Ensenada de Carreira (Plans K & L) (correction superseded see ILNW 573/18)**

Insert Y spec. spher. Lt buoy FI.Y.2s in 42°10'·66N 8°50'·19W (ILNW 190/17)

**30 Illa de Arousa NE (Plans F & I)**

**Plan F**

Insert GRG starboard pillar Lt buoy FI(2+1)G.13·5s in 42°35'·10N 8°50'·80W

**Plan I**

Insert GRG starboard pillar Lt buoy FI(2+1)G.13·5s3M in 42°35'·10N 8°50'·80W (ILNW 392/17)

**31 I. de Tambo SW (Plan J)**

Amend Y special pillar Lt buoy to FI(4)Y.11s5M in 42°24'·37N 8°42'·97W (ILNW 468/17)

**32 Panxón (Plans K & L)**

Move Lt DirOc.WRG.4s18-14M in 42°08'·34N 8°48'·81W to 42°08'·33N 8°48'·95W (ILNW 484/17)

**33 Baiona (Plan L)**

Insert drying Rk sym. enclosed by dangerline in 42°07'·16N 8°50'·42W

Replace depth 2·6m with depth 1·8m in 42°08'·35N 8°50'·01W (ILNW 485/17)

**34 Baiona (Plans K & L)**

Move YBY west pillar Lt buoy Q(9)15s5M from 42°09'·23N 8°53'·35W to 42°09'·29N 8°53'·21W. Amend Lt

desc. to VQ(9)10s5M (ILNW 520/17)

**35 Ría de Vigo (Plan K)**

Delete BY North pillar Lt buoy Q in 42°13'·45N 8°47'·79W (ILNW 564/17)

**36 Corme (Plan B)**

Amend Lt desc. to FI(4)R.5s3M in 43°15'·65N 8°57'·79W (ILNW 173/18)

**37 Ría de Vigo (Plan K)**

Amend Lt Pta Canabal FI(3)20s63m10M to FI(3)10s65m10M in 42°12'·71N 8°54'·73W (ILNW 428/18)

**38 Ensenada de Carreira (Plans K & L)**

Delete Y spec. spher. Lt buoy FI.Y.2s in 42°10'·66N 8°50'·19W (ILNW 573/18)

**39 Fontán NW**

Delete dangerous Wk sym in 43°24'·30N 8°16'·76W (ILNW 588/18)

**40 Rio Douro (Plan O)**

Buoyage in the Rio Douro has been amended. Yachtsmen are advised to navigate with caution. Further details will be included once available. (ILNW 636/18)

**41 Vilagarcía (Plan H)**

Yachtsmen are advised that depths are no longer maintained in the approaches to, and port of, Vilagarcía de Arousa.

Delete label:

*Maintained 9m* centred on 42°36'·11N 8°46'·95W

*13m* centred on 42°35'·97N 8°46'·78W

*11m* centred on 42°35'·74N 8°46'·78W

Yachtsmen are advised to navigate with caution and consult the local port authority for further information. (ILNW 706/18)

**42 Ría de Pontevedra**

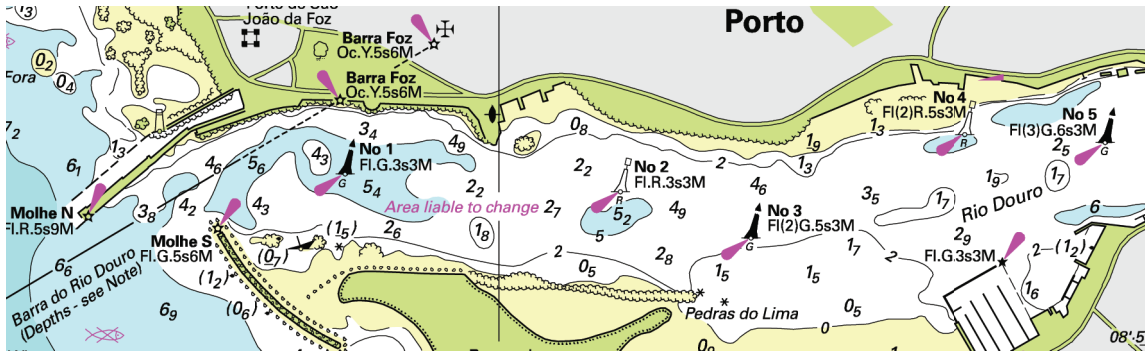
Replace Wk depth 7m with dangerous Wk sym in 42°24'·5N 8°52'·2W (ILNW 713/18)

**43 Punta Faxilda S (Plan J)**

Insert dangerous Wk sym in 42°24'·46N 8°52'·18W. Delete Wk depth 7m close SW (ILNW 713/18)

**44 Âncora**

Delete fog signal Siren60s at Lt FI(2)R.5s9M in 41°48'·96N 8°52'·03W (ILNW 45/19)



Block correction for C48 (Plan O)  
ILNW 310/16