

Imray Correction Notice ICC5-3

7 September 2021

Chart C5 WGS 84 Edition 2016

Versions available:

New Edition (corrected to July 2016)

Update (corrected to August 2017)

Update (corrected to August 2018)

Update (corrected to August 2019)

Update (corrected to January 2021)

NOTES

Below is a complete list of corrections issued since the 2016 edition of this chart was published.

Each correction is issued with an ILNW reference number and year.

Corrections are listed chronologically in ascending order.

For Update versions of this chart, please check the bottom left corner of the chart to determine the last applied correction.

Any further corrections will be applicable from that point onwards.

1 **Lyme Bay**

Insert limit of mussel farm joining:

50°34'·40N 3°12'·63W

50°34'·02N 3°14'·20W

50°35'·56N 3°15'·09W

50°35'·93N 3°13'·49W

Add assoc. lgd *Mussel Farm (buoyed)*

Delete Y spec. pillar Lt buoy & assoc. lgd in:

50°34'·28N 3°13'·28W

50°34'·45N 3°12'·21W (ILNW 401/16)

2 **Exmouth SE**

Move Y spherical Lt buoy:

DZN from 50°36'·85N 3°19'·32W to 50°36'·99N 3°19'·06W

DZS from 50°36'·13N 3°19'·43W to 50°35'·79N 3°18'·94W (ILNW 464/16)

3 **Lyme Bay, Weymouth W**

Insert dangerous Wk sym. in 50°35'·56N 2°41'·34W (ILNW 579/16)

4 **River Dart Entrance (Plan H)**

Amend Lt desc of YB South cardinal Lt buoy **West Rock** to Q(6)+LFl.15s in 50°19'·86N 3°32'·47W (ILNW 203/17)

5 **River Dart Entrance (Main chart & Plan H)**

Replace depth 1·8m with depth 1·4m enclosed by dangerline in 50°20'·11N 3°33'·00W (ILNW 272/18)

6 **River Dart Entrance (Plan H)**

Replace depth 1·3m with dangerous underwater rock sym. plus assoc. depth 0·1m in 50°20'·05N 3°32'·67W (ILNW 331/18)

7 **Start Bay**

The **Skerries Bank** buoy is now lit. Add Lt desc. Fl.R.5s at R can buoy in 50°16'·31N 3°33'·77W (ILNW 341/18)

8 **Bridport Harbour (Plan A)**

Insert accompanying block correction centred on 50°42'·58N 2°45'·83W (ILNW 374/18)

9 **River Dart Entrance (Plan H)**

Insert R spher. Lt buoy:

D11 Fl.5s in 50°20'·21N 3°31'·87W

D23 Fl.5s in 50°19'·58N 3°31'·87W

D24 Fl.5s in 50°19'·45N 3°32'·24W

D18 Fl.5s in 50°19'·44N 3°34'·51W (ILNW 380/18)

10 Approaches to Tor Bay

Amend label at BYB N cardinal Lt buoy Q(3)10s (4 buoys) to (2 buoys) in 50°28'09N 3°24'62W plus delete racon sym. and assoc. lgd Racon(T). The east and west cardinal buoys have been removed. The north and south cardinal buoys remain. (ILNW 553/18)

11 Start Point

Amend Lt FI(3)10s62m25M&F.R.9M Horn(1)60s to FI(3)10s62m18M&F.R.9M Horn(1)30s in 50°13'35N 3°38'53W (ILNW 657/18)

12 Teignmouth Harbour (Plan D)

Insert:

G con Lt buoy **Spratt Sands Inner** FI.G.2s in 50°32'37N 3°29'90W

R can Lt buoy **Ness Rocks** FI.R.2s in 50°32'34N 3°29'79W (ILNW 699/18)

13 Exmouth (Plan C)

Move:

G con buoy 1 in 50°36'04N 3°23'84W to 50°36'03N 3°23'77W & add Lt desc. FI(2)G.5s

R can buoy 2 in 50°36'02N 3°23'94W to 50°36'01N 3°23'87W & add Lt desc. FI(2)R.5s (ILNW 5/19)

14 Dartmouth (Plan H)

Insert depth 2.0m in 50°20'03N 3°33'08W. Delete depth 2.4m close NW (ILNW 292/19)

15 Berry Head (Main chart & Plan G)

Amend range of Lt **Berry Head** FI(2)15s58m19M to 18M in 50°23'97N 3°29'01W. This change will take effect on or about 29th July 2019. (ILNW 354/19)

16 Bill of Portland

Amend range of **LIGHTHOUSE** FI(4)20s43m25M to 18M in 50°30'85N 2°27'38W. F.R.19m13M Lt remains unaltered. (ILNW 549/19)

17 Brixham (Plan F)

Insert jetty, line, joining:

50°24'00N 3°30'92W (shore)

50°24'03N 3°30'88W (ILNW 629/19)

18 Bridport Harbour (Plan A)

Insert depth 1.4m in 50°42'52N 2°45'82W. Delete depth 1.7m close NW (ILNW 641/19)

19 Brixham Harbour (Plan F)

Amend Lt desc:

2FI.R.5s(vert) to 2F.R(vert) in 50°23'96N 3°30'60W

2FI.G.5s(vert) to 2F.G(vert) in 50°24'08N 3°30'44W (ILNW 11/20)

20 Bill of Portland

The W Lt sectors at **LIGHTHOUSE** FI(4)20s43m18M in 50°30'85N 2°27'38W have been amended to a single FI(4) sector. F.R.19m13M Lt sector remains unaltered. (ILNW 85/20)

21 Bridport Harbour (Plan A) correction amended ILNW 557/20

Insert depth 0.6m in 50°42'54N 2°45'95W

Replace depth 1.6m with 0.2m in 50°42'55N 2°45'84W (ILNW 247/20)

22 Exmouth (Plan C)

Insert drying height:

-1.8m in 50°37'09N 3°26'30W

-0.6m in 50°37'50N 3°26'16W

-0.6m in 50°37'76N 3°26'35W

Insert depth 1.2m in 50°37'32N 3°26'23W (ILNW 288/20)

23 Approaches to Teignmouth Harbour (Plan D)

Insert depth 1.8m enclosed by 2m contour in 50°32'28N 3°29'21W (ILNW 359/20)

24 Approaches to Exmouth (Plan C)

Insert depth 0.3m in 50°36'·20N 3°23'·99W

Insert drying height:

-0.9m in 50°36'·17N 3°23'·77W

-0.4m in 50°36'·10N 3°23'·97W

-0.5m in 50°36'·15N 3°24'·60W

-0.4m in 50°36'·03N 3°25'·79W

Replace depth 1.1m with 0.5m in 50°36'·07N 3°23'·90W (ILNW 360/20)

25 Approaches to River Exe (Plan C)

Insert depth 0.4m in 50°36'·37N 3°24'·03W. Del 1.3m close NW (ILNW 425/20)

26 Bridport Harbour (Plan A)

Insert depth 1.3m in 50°42'·56N 2°45'·85W. Delete depth 0.2m close SE (ILNW 557/20)

27 Cockwood E (Plan C)

Insert BYB E cardinal Lt buoy Q(3)10s in 50°36'·87N 3°26'·50W (ILNW 113/21)

28 River Dart Entrance (Plan H)

Insert depth, enclosed by dangerline:

0·8m in 50°20'·45N 3°33'·36W, add seabed type *R*

1·0m in 50°20'·15N 3°32'·76W

1·9m in 50°19'·96N 3°34'·04W. Delete depth 3m close SW

Replace depth 2·3m with depth 1·9m, enclosed by dangerline in 50°19'·90N 3°34'·09W (ILNW 184/21)

29 Exmouth (Plan C)

Insert:

Dangerous Wk sym in 50°37'·57N 3°26'·59W

Drying Wk sym in 50°37'·83N 3°26'·78W (ILNW 331/21)

30 Kettle Point (Plan H)

Amend Lt and associated Lt sector in 50°20'·65N 3°33'·81W to F.WRG.5m9M with a sector of 90°-G-102°-W-107°-R-115° (ILNW 373/21)

31 Exmouth (Plan C)

Insert limit of restricted area joining:

50°36'·41N 3°23'·13W

50°36'·34N 3°23'·18W

50°36'·45N 3°24'·10W

50°36'·66N 3°24'·07W

Add assoc. lgd *Bathing Area*

The bathing area is seasonal (April – Oct) & marked by yellow buoys on the southern limit. Power driven vessels are prohibited. Other vessels may proceed with extreme caution, giving way to swimmers.

Insert drying height:

-1·3m in 50°36'·35N 3°24'·16W, extend 0m contour NE to enclose

-0·5m in 50°36'·25N 3°24'·07W, extend 0m contour NE to enclose (ILNW 385/21)

32 Tor Bay (Plan G)

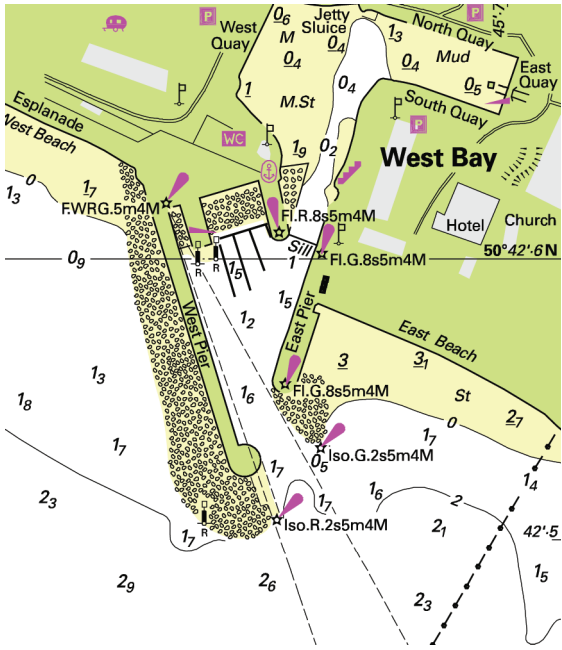
Insert *Obstrn* sym. centred on:

50°26'·99N 3°29'·58W plus assoc. lgd (*buoyed*)

50°26'·91N 3°29'·65W (ILNW 398/21)

33 Exmouth (Plan C)

Insert G pillar Lt buoy **Hinton** Fl(2)G.5s in 50°36'·99N 3°26'·29W (ILNW 433/21)



Block correction C5 (Plan A)
ILNW 374/18