

# Imray Correction Notice

24 January 2018

ICC52-2

## Chart C52 WGS 84

Edition 2015

Versions available:

New Edition (corrected to September 2015)

**NOTE** Below is a complete list of corrections issued since the 2015 edition of this chart was published. Corrections are listed chronologically in ascending order.

### 1 Liverpool Bay

Replace Lt **MAST** (80) Mo(U)15s12m10M & F.R Horn Mo(U)30s with Fl.Y.5s18m5M Mast (82) in 53°28'·84N 3°30'·50W (ILNW 627/15)

### 2 Conwy (Plan A)

Insert Y spher Lt buoy Q.Y.6s in 53°17'·56N 3°50'·27W (ILNW 28/16)

### 3 Approaches to Porthmadog

Move RW Lt buoy LFI.10s **Fairway** from 52°52'·96N 4°11'·20W to 52°52'·35N 4°10'·01W. Amend topmark to a spherical topmark. (ILNW 172/16)

### 4 Liverpool Bay, Burbo Wind Farm

Insert accompanying block correction centred on 53°28'·97N 3°16'·89W. (ILNW 183/16)

### 5 Pwllheli (Plan J)

Amend fixed Lt sym to R can Lt buoy in 52°53'·21N 4°23'·75W. Lt characteristic remains unchanged. (ILNW 224/16)

### 6 Constable Bank N

Delete BY North pillar Lt buoy **North Constable** in 53°23'·72N 3°41'·41W. (ILNW 384/16)

### 7 Rhyl Flats Wind Farm

Delete Lt buoy:

**RFWF1** in 53°23'·10N 3°36'·25W

**RFWF2** in 53°23'·76N 3°39'·10W (ILNW 386/16)

### 8 Caernarfon Bar (Plan G)

Insert accompanying block correction centred on 56°06'·92N 4°23'·08W (ILNW 418/16)

### 9 Rhyl N, Inner Passage

Insert BY North pillar Lt buoy **Prestatyn** Q in 53°21'·37N 3°29'·00W. Delete G Lt buoy **Prestatyn** close S. (ILNW 476/16)

### 10 Barmouth (Plan M)

Insert G con. buoy in 52°43'·19N 4°04'·15W. This marks the outer extent of an outfall pipe. (ILNW 538/16)

### 11 Liverpool Bay

Add lgd (2 buoys) **PA** at Y pillar Lt buoy Fl(5)Y.20s in 53°31'·98N 3°21'·79W

Delete Y spher. Lt buoy Fl(5)Y.20s in 53°32'·10N 3°21'·20W (ILNW 69/17)

### 12 Pwllheli (Plan J)

Delete:

Lt Fl.G.15s in 52°53'·04N 4°24'·23W

G starboard Lt Bn Fl.G.12·5s in 52°53'·05N 4°24'·04W (ILNW 103/17)

### 13 Menai Suspension Bridge NE (Plans D & G)

Delete:

W Bn sym. with diamond topmark in:

53°13'·30N 4°09'·81W (Plan D)

53°13'·16N 4°09'·69W (Plan D)

Submarine cable joining the above co-ordinates (Plans D & G) (ILNW 180/17)

### 14 Caernarfon Bar (Plan G) (correction amended – see ILNW 483/17)

Move:

safe water pillar Lt buoy **Caernarfon Bar** LFI.10s in 53°06'·45N 4°25'·00W to 53°06'·56N 4°24'·98W

R can Lt buoy **C2** Fl.R.10s in 53°07'·00N 4°24'·25W to 53°06'·91N 4°24'·26W (ILNW 426/17)

### 15 Caernarfon Bar (Plan G)

Move Lt buoy:

**C1** in 53°06'·78N 4°24'·63W to 53°06'·87N 4°24'·31W

**C2** in 53°06'·91N 4°24'·26W to 53°07'·12N 4°24'·22W  
**C3** in 53°07'·10N 4°23'·80W to 53°07'·13N 4°23'·91W  
**C4** in 53°07'·10N 4°22'·95W to 53°07'·10N 4°22'·84W  
**C8** in 53°07'·62N 4°19'·41W to 53°07'·62N 4°19'·52W (ILNW 483/17)

**16 Caernarfon Bar (Plan G)**

Move Lt buoy:

**C7** in 53°08'·11N 4°18'·00W to 53°08'·19N 4°18'·13W  
**C10** in 53°07'·96N 4°18'·28W to 53°08'·02N 4°18'·50W (ILNW 494/17)

**17 Liverpool Bay**

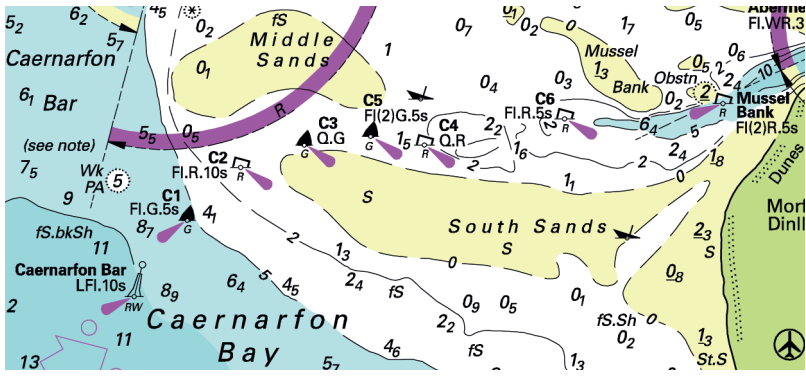
Construction work on the Burbo Bank Wind Farm extension is now complete. Replace Igd *Burbo Wind Farm Extension Under Construction (buoyed)* with *Burbo Bank Wind Farm* centred on 53°28'·92N 3°18'·65W (ILNW 613/17)

**18 Caernarfon Bay, Careg Goch**

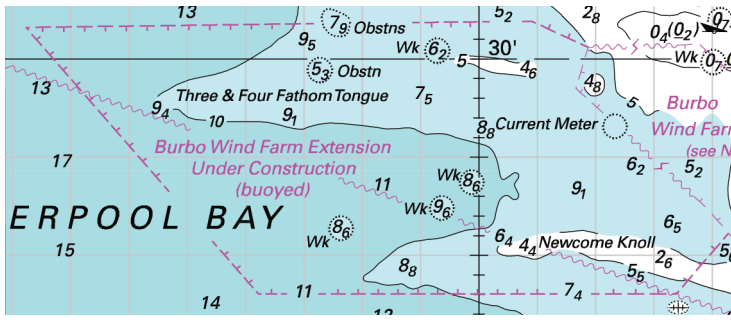
Replace depth 1·7m with underwater Rk depth 1·1m in 53°12'·37N 4°32'·50W (ILNW 626/17)

**19 Jordans Spit S**

Insert Y pillar Lt buoy FI(5)Y.20s in 53°32'·31N 3°13'·71W (ILNW 69/18)



Block correction for C52 (Plan G)  
ILNW 418/16



Block correction for C52  
ILNW 183/16