

# Imray Correction Notice ICC57-2

23 September 2021

## Chart **C57** WGS 84

*Edition 2017*

*Versions available:*

*New Edition (corrected to April 2017)*

*Update (corrected to April 2018)*

*Update (corrected to April 2019)*

*Update (corrected to April 2020)*

*Update (corrected to March 2021)*

### NOTES

*Below is a complete list of corrections issued since the 2017 edition of this chart was published.*

*Each correction is issued with an ILNW reference number and year.*

*Corrections are listed chronologically in ascending order.*

*For Update versions of this chart, please check the bottom left corner of the chart to determine the last applied correction.*

*Any further corrections will be applicable from that point onwards.*

#### 1 **Tuskar Rock NW**

Amend Lt descriptions at buoys:

**S Long** FI(2)G.6s to FI.G.6s (sync) in 52°14'·74N 6°15'·80W

**Splaugh** FI(2)R.6s to FI.R.6s (sync) in 52°14'·36N 6°16'·76W. AIS remains unchanged. (ILNW 463/17)

#### 2 **Holdens Bed**

Amend duration of G con Lt buoy **W Holdens** FI(3)G.10s to 9s in 52°15'·76N 6°18'·74W (ILNW 572/17)

#### 3 **Tuskar Rock S**

Delete racon sym. and assoc. lgd AIS at YB S cardinal pillar Lt buoy **South Rock** Q(6)+LFI.15s in 52°10'·88N 6°12'·82W (ILNW 151/18)

#### 4 **Roche's Point (Main chart & Plan B)**

Amend range of Lt to 18/12M plus insert racon sym and assoc. lgd AIS in 51°47'·58N 8°15'·29W (ILNW 152/18)

#### 5 **Dunmore East Harbour (Plan G)**

Insert lgd *Less water reported (2018)* angled 150° centred on 52°08'·95N 6°59'·42W (ILNW 472/18)

#### 6 **Cork Lower Harbour (Plan B)**

Insert Lgd *Works (2018)* centred on:

51°50'·08N 8°19'·39W

51°50'·10N 8°18'·20W (ILNW 543/18)

#### 7 **Dunmore East (Plan F)**

Amend Lt:

FI.R to FI(3)R in 52°08'·98N 6°59'·40W

FI.G to FI(3)G in 52°08'·96N 6°59'·49W (ILNW 585/18)

#### 8 **Dunmore East (Plan G)**

Amend Lt:

FI.R.2s6m4M to FI(3)R.10s6m4M in 52°08'·98N 6°59'·40W

FI.G.2s6m4M to FI(3)G.10s6m4M in 52°08'·96N 6°59'·49W (ILNW 585/18)

#### 9 **Cork Lower Harbour (Plan B)**

Delete R can Lt buoy **RA2** Q.R in 51°50'·15N 8°19'·51W (ILNW 22/19)

#### 10 **Ballycotton Island SW**

Move R can Lt buoy **The Smiths** FI(3)R.10s in 51°48'·59N 8°00'·75W to 51°48'·43N 8°00'·60W (ILNW 390/19)

**11 River Barrow (Plan F)**

Depths are reported to be less than charted in the River Barrow north of Barrow Bridge (52°17'·31N 7°00'·54W). Yachtsmen are advised to exercise caution when in the vicinity. (ILNW 383/20)

**12 Kinsale Head Gas Field**

Insert lgd *Gas Field Decommissioning* (see Note) centred on 51°18'·82N 8°02'·71W

Add chart note:

Production platforms and associated structures are currently being decommissioned. During the works, aids to navigation may be unreliable and certain features may not be shown (ILNW 628/20)

**13 Dunmore East Harbour (Plan G)**

Insert minor lt 2F.G(vert) in 52°08'·87N 6°59'·48W (ILNW 11/21)

**14 Dunmore East Harbour (Plan G)**

Insert accompanying block correction centred on 52°08'·92N 6°59'·43W (ILNW 47/21)

**15 Cobh (Plan B)**

Insert pontoon joining:

51°50'·80N 8°18'·53W

51°50'·76N 8°18'·47W

51°50'·74N 8°18'·48W

Insert minor G Lt in:

51°50'·76N 8°18'·47W

51°50'·74N 8°18'·48W (ILNW 164/21)

**16 Kinsale Head Gas Field**

Insert racon sym and assoc. lgd AIS at platform:

Kinsale A-East in 51°22'·20N 7°56'·79W

Kinsale B-West in 51°21'·62N 8°01'·09W (ILNW 167/21)

**17 Kilmore S (Plan H)**

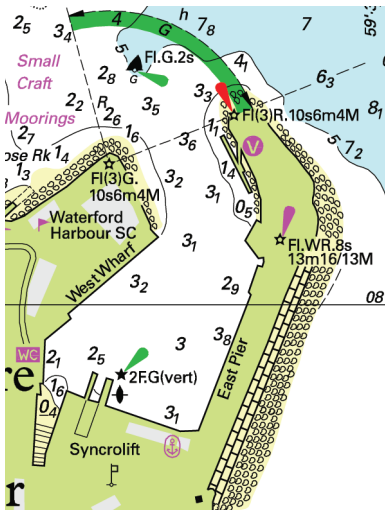
Insert obstruction with a depth of:

1.2m in 52°09'·80N 6°35'·21W

1.4m in 52°09'·59N 6°35'·25W (ILNW 194/21)

**18 Kilmore Spit S (Plan H)**

Insert depth 0.6m in 52°09'·86N 6°34'·48W. Extend dangerline S to enclose (ILNW 472/21)



Block correction for C57 (Plan G)  
ILNW 47/21