

# Imray Correction Notice ICC61-2

5 June 2019

## Chart C61 WGS 84 Edition 2016

*Versions available:*  
New Edition (corrected to March 2016)  
Update (corrected to March 2018)

### NOTES

Below is a complete list of corrections issued since the 2016 edition of this chart was published.  
Each correction is issued with an ILNW reference number and year.  
Corrections are listed chronologically in ascending order.  
For Update versions of this chart, please check the bottom left corner of the chart to determine the last applied correction.  
Any further corrections will be applicable from that point onwards.

- 1 Approaches to Porthmadog** (*Correction superseded - see ILNW 342/18*)  
Move RW Lt buoy LFI.10s **Fairway** from 52°52'96N 4°11'20W to 52°52'35N 4°10'01W. Amend topmark to a spherical topmark. (ILNW 172/16)
- 2 Approaches to Porthmadog (Plan F)** (*Correction superseded - see ILNW 343/18*)  
The buoyed channel leading to Porthmadog has moved. The Fairway buoy is now in a position to the south of the inset plan.  
Delete RW Lt buoy LFI.10s **Fairway** in 52°53'00N 4°11'12W (ILNW 173/16)
- 3 Cardigan Bay**  
Delete Y spherical Lt buoy **ODAS FI(5)Y.20s** in 52°22'34N 4°41'60W (ILNW 249/16)
- 4 Approaches to Aberdovey (Plan D)** (*correction amended – see ILNW 368/17*)  
Move Lt buoy:  
**Bar** from 52°32'10N 4°04'89W to 52°32'18N 4°04'91W  
**No 2** from 52°32'16N 4°04'91W to 52°32'22N 4°04'92W  
**No 3** from 52°32'19N 4°04'49W to 52°32'22N 4°04'63W. (ILNW 265/16)
- 5 Codling Bank**  
Replace depth 2.6m with 0.6m wreck enclosed by circular dangerline in 53°07'49N 5°51'21W. (ILNW 330/16)
- 6 Bray Bank**  
Insert depth 1.8m in 53°12'57N 5°54'44W. Delete depth 2.5m close SW. (ILNW 356/16)
- 7 Constable Bank N**  
Delete BY North pillar Lt buoy **North Constable** in 53°23'72N 3°41'41W. (ILNW 384/16)
- 8 Caernarfon Bar (Plan H)**  
Insert accompanying block correction centred on 53°07'14N 4°22'82W (ILNW 418/16)
- 9 Barmouth (Plan E)**  
Insert G con. buoy in 52°43'19N 4°04'15W. This marks the outer extent of an outfall pipe. (ILNW 538/16)
- 10 Menai Suspension Bridge NE (Plan I)**  
Delete:  
W Bn sym. with diamond topmark in:  
53°13'30N 4°09'81W  
53°13'16N 4°09'69W  
Submarine cable joining the above co-ordinates (ILNW 180/17)
- 11 Holdens Bed**  
Insert depth 2.5m enclosed by 5m contour in 52°16'31N 6°18'39W (ILNW 187/17)
- 12 Approaches to Aberdovey (Plan D)** (*correction amended – see ILNW 427/17*)  
Move Lt buoy:  
**Bar** from 52°32'18N 4°04'91W to 52°32'22N 4°04'96W  
**No 2** from 52°32'22N 4°04'92W to 52°32'26N 4°04'99W  
**No 3** from 52°32'22N 4°04'63W to 52°32'29N 4°04'64W (ILNW 368/17)
- 13 Caernarfon Bar (Plan H)** (*correction amended – see ILNW 483/17 & 396/18*)  
Move:  
safe water pillar Lt buoy **Caernarfon Bar** LFI.10s in 53°06'45N 4°25'00W to 53°06'56N 4°24'98W  
R can Lt buoy **C2** FI.R.10s in 53°07'00N 4°24'25W to 53°06'91N 4°24'26W (ILNW 426/17)
- 14 Approaches to Aberdovey (Plan D)**  
Move G con Lt buoy **Bar** from 52°32'22N 4°04'96W to 52°32'26N 4°04'91W (ILNW 427/17)
- 15 Tuskar Rock NW**  
Amend Lt descriptions at buoys:  
**S Long** FI(2)G.6s to FI.G.6s (sync) in 52°14'72N 6°15'79W  
**Splough** FI(2)R.6s to FI.R.6s (sync) in 52°14'38N 6°16'79W. AIS remains unchanged. (ILNW 463/17)

**16 Caernarfon Bar (Plan H)** (*correction amended – see ILNW 396/18 & ILNW 581/18*)

Move Lt buoy:

**C1** in 53°06'78N 4°24'63W to 53°06'87N 4°24'31W

**C2** in 53°06'91N 4°24'26W to 53°07'12N 4°24'22W

**C3** in 53°07'10N 4°23'80W to 53°07'13N 4°23'91W

**C4** in 53°07'10N 4°22'95W to 53°07'10N 4°22'84W

**C8** in 53°07'62N 4°19'41W to 53°07'62N 4°19'52W (ILNW 483/17)

**17 Caernarfon Bar (Plan H)**

Move Lt buoy:

**C7** in 53°08'13N 4°17'95W to 53°08'19N 4°18'13W

**C10** in 53°08'02N 4°18'10W to 53°08'02N 4°18'50W (ILNW 494/17)

**18 Caernarfon Bay, Careg Goch**

Replace underwater Rk depth 1.7m with underwater Rk depth 1.1m in 53°12'37N 4°32'50W (ILNW 626/17)

**19 Dublin Bay (Plan L)**

Insert Y spec. pillar Lt buoy FI(5)Y.20s plus racon sym & assoc. lgd AIS in:

53°20'10N 6°02'40W

53°19'63N 6°02'46W

53°19'13N 6°02'48W

53°17'60N 6°04'20W

Move R can Lt buoy **No8** FI.R.2s in 53°20'55N 6°08'83W to 53°20'52N 6°08'56W (ILNW 654/17)

**20 Courtown**

Insert Lt FI.R.5s3M&FI.G.5s3M in 52°38'63N 6°13'51W (ILNW 34/18)

**21 Tuskar Rock S**

Delete racon sym. and assoc. lgd AIS at YB S cardinal pillar Lt buoy **S Rock** Q(6)+LFI.15s in 52°10'81N 6°12'83W (ILNW 151/18)

**22 Caernarfon Bay**

Delete Y spher Lt buoy FI(5)Y.20s in 53°13'00N 4°43'44W (ILNW 171/18)

**23 Dublin Bay (Plan L)**

Amend Lt descripts at buoys:

**No3** IQ.G to Q.G in 53°20'56N 6°06'80W

**No4** IQ.R to Q.R in 53°20'37N 6°06'84W (ILNW 198/18)

**24 Constable Bank**

Insert Y special pillar Lt buoy FI(5)Y.20s in 53°22'51N 3°43'56W (ILNW 225/18)

**25 Approaches to Porthmadog**

Move RW Lt buoy **Fairway** LFI.10s from 52°52'35N 4°10'01W to 52°52'97N 4°11'20W (ILNW 342/18)

**26 Approaches to Porthmadog (Plan F)**

Insert RW can Lt buoy with spherical topmark **Fairway** LFI.10s in 52°52'97N 4°11'20W (ILNW 343/18)

**27 Holyhead Deep** (*correction amended – see ILNW 521/18*)

Insert Y superbuoy **F** enclosed by restricted area line plus assoc. label *Tidal Energy Device* in 53°17'80N 4°47'76W (ILNW 387/18)

**28 Dutchman Bank NW (Plan H)**

Amend Lt desc. at G con Lt buoy **B1** to FI(2)G.5s in 53°18'13N 4°02'30W (ILNW 391/18)

**29 Caernarfon Bay**

Move safe water pillar Lt buoy LFI.10s in 53°06'44N 4°24'97W to 53°07'00N 4°25'00W (ILNW 396/18)

**30 Caernarfon Bar (Plan H)** (*correction amended see ILNW 581/18*)

Move:

safe water pillar Lt buoy **Caernarfon Bar** LFI.10s in 53°06'56N 4°24'98W to 53°07'00N 4°25'00W

G con Lt buoy **C1** FI.G.5s in 53°06'87N 4°24'31W to 53°06'96N 4°24'47W (ILNW 396/18)

**31 New Quay (Plan B)**

Insert BY N cardinal pillar Lt buoy Q in 52°13'19N 4°20'70W. Delete BY N cardinal pillar buoy close NW. (ILNW 440/18)

**32 Dalkey Island N (Plan L)**

Insert R can Lt buoy FI.(4)R.6s (*Apr-Oct*) in 53°16'65N 6°05'10W (ILNW 480/18)

**33 Wicklow Head**

Insert racon sym. & assoc. lgd AIS at **LT HO.** in 52°58'01N 6°00'06W (ILNW 483/18)

**34 Baldoyle Spit (Plan L)**

Insert drying height -1.7m in 53°23'84N 6°05'07W (ILNW 484/18)

**35 Holyhead Deep**

Amend Y superbuoy name **F** to Lt desc. FI(4)Y.15s in 53°17'80N 4°47'76W (ILNW 521/18)

**36 Cardigan Bay**

Insert Y spher. Lt buoy *ODAS* Fl(5)Y.20s in 56°26'·02N 4°47'·99W (ILNW 561/18)

**37 Holyhead Deep**

Insert racon sym & assoc. lgd *A/S* at Y Lt superbuoy Fl(4)Y.15s in 53°17'·80N 4°47'·76W (ILNW 566/18)

**38 Holy Island SW**

Insert Y special pillar Lt buoy Fl(5)Y.20s in 53°15'·48N 4°43'·26W (ILNW 568/18)

**39 Caernarfon Bar (Plan H)**

Move Lt buoy:

**C1** in 53°06'·96N 4°24'·47W to 53°07'·06N 4°24'·52W

**C3** in 53°07'·13N 4°23'·91W to 53°07'·17N 4°23'·95W plus amend Lt desc. Q.G to Fl(3)G.10s

**C6** in 53°07'·21N 4°21'·95W to 53°07'·08N 4°21'·74W (ILNW 581/18)

**40 Holyhead Bay**

Insert Y special spher. Lt buoy Fl(5)Y.20s (*2 buoys*) in 53°22'·37N 4°41'·84W (ILNW 642/18)

**41 The Swellies (Plan I)**

Replace depth 2·8m with depth 0·5m in 53°12'·98N 4°10'·98W (ILNW 3/19)

**42 Menai Strait (Plan H)**

Insert:

depth 1·0m in 53°10'·42N 4°14'·87W

drying patch centred on 53°10'·14N 4°15'·49W

depth 0·1m in 53°08'·32N 4°17'·85W

Replace depth 4·1m with drying height -1·0m in 53°19'·01N 4°01'·40W

Depths in the entrances to the Menai Strait are continually changing and the buoys are moved accordingly. Contact Caernarfon Harbourmaster for details. (ILNW 4/19)

**43 Wicklow Head**

Amend range of Lt at **LT HO.** to 18M in 52°58'·01N 6°00'·06W (ILNW 163/19)

**44 Blackwater Bank NW, Rusk Channel**

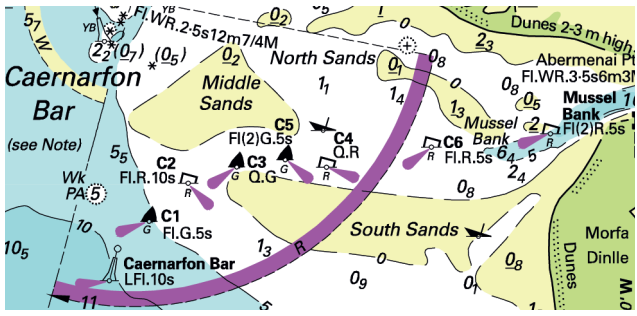
Insert racon sym. and assoc. lgd *A/S* at G con Lt buoy **No1** Fl(2)G.5s (sync) in 52°28'·53N 6°11'·78W (ILNW 165/19)

**45 Menai Strait (Plan H)**

Yachtsmen are advised to navigate with caution as a sandbank has developed between buoys **C11** and **C9** in the Menai Strait. Insert lgd *Less water* centred on 53°10'·3N 4°15'·0W (ILNW 226/19)

**46 The Swellies (Plan I)**

Insert *Obstn* depth 2·8m in 53°14'·07N 4°08'·81W (ILNW 246/19)



Block correction for C61(Plan H)  
ILNW 418/16