

Imray Correction Notice

17 December 2018

ICG12-1

Chart G12 WGS 84

Edition 2014

Versions available:

New Edition (corrected to July 2014)

Update (corrected to January 2017)

Update (corrected to January 2018)

NOTE Below is a complete list of corrections issued since the 2014 edition of this chart was published. Corrections are listed chronologically in ascending order. For Update versions of this chart, please check the bottom left corner of the chart to determine the last applied correction. Any further corrections will be applicable from that point onwards.

1 Nisos Zákynthos northwestwards

Delete Y pillar Lt buoy FI(5)Y.20s in 37°56'·77N 20°36'·42E. (ILNW 334/14)

2 Katakólon

Delete Lt FI.R.5s10m10M in 37°38'·77N 21°19'·57E. (ILNW 36/15)

3 Levkas Town N (Main chart & Plan A)

Delete Lt FI.G.1·5s10m3M in 38°50'·87N 20°43'·23E (ILNW 462/16)

4 Levkas Canal Entrance (Plan A)

Insert accompanying block correction centred on 38°50'·87N 20°43'·39E (ILNW 152/17)

5 Dhioriga Levkádhos (Levkas Canal) (Plan A)

Amend Lt to:

Iso.G.2s3M in 38°49'·82N 20°42'·89E

Iso.R.2s3M in 38°49'·77N 20°42'·89E (ILNW 333/17)

6 Katakólon

Insert Lt FI.R.5s10M in 37°38'·82N, 21°19'·66E. This marks the end of the outer breakwater extension (ILNW 568/17)

7 Levkas Canal (Plan A)

Replace existing note **Levkas Canal** with:

NOTE - LEVKAS CANAL

The channel is marked along the entire length by lateral buoys which are lit at night. The direction of buoyage changes at the bridge, such that when heading south once through the bridge, red buoys should be kept to starboard. Depths are maintained by dredging and so may be less than charted in places. Navigation is only permitted for small vessels during daylight hours. Before entering the channel, vessels must contact Levkas Port Authority by VHF.

LEVKAS CANAL – NORTHERN ENTRANCE

Depths in the northern entrance to Levkas Canal are less than charted, ranging between 3.5 - 4m in the deeper part of the channel. Yachtsmen are advised to consult **Ionian** by Rod & Lucinda Heikell for full pilotage of the canal entrance. (ILNW 3/18)

8 Stenón Ithakis

A new submarine cable has been laid between Palíokaravo (38°26'·40N 20°34'·93E) and Órmos Polis (38°26'·43N 20°38'·51E). Yachtsmen are advised not to anchor in the vicinity of submarine cables. (ILNW 248/18)

9 Stenón Prévezis SW, Ó. Áy. Kiriakís, N. Kavikalidha NW, Ó. Alikon NE

Insert dangerous Wk sym. and assoc. Igd PA in:

38°56'·14N 20°42'·56E

38°19'·00N 20°29'·18E

37°56'·57N 21°07'·00E

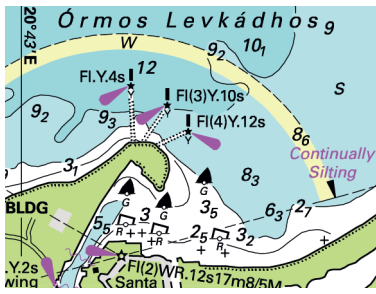
37°51'·37N 20°46'·75E (ILNW 310/18)

10 N. Atoko

Move Lt FI.6s25m10M in 38°28'·48N 20°48'·40E to 38°28'·64N 20°47'·80E (ILNW 352/18)

11 Notification of new edition

A new January 2019 edition of this chart will shortly be published. In addition to the listed corrections the chart specification has been improved to show coloured light flashes. The display of buoyage within the Levkas Canal has been improved. Submarine cables and firing practice areas have been updated. There has been general updating throughout. (ILNW 709/18)



Block correction for G12 (Plan A)
 ILNW 152/17