

Imray Correction Notice

ICY16-3

1 May 2020

Chart Y16 WGS 84 Edition 2017

Versions available:

New Edition (corrected to June 2017)

Update (corrected to July 2018)

Update (corrected to July 2019)

NOTES

Below is a complete list of corrections issued since the 2017 edition of this chart was published.

Each correction is issued with an ILNW reference number and year.

Corrections are listed chronologically in ascending order.

For Update versions of this chart, please check the bottom left corner of the chart to determine the last applied correction.

Any further corrections will be applicable from that point onwards.

1 Felixstowe S

Insert:

depth 0.3m in 51°56'20N 1°21'25E. Delete depth 0.9m close SW

drying height 0.5m in 51°55'96N 1°19'84E. Delete depth 0.2m close S (ILNW 628/17)

2 River Stour

Insert depth 1.4m in:

51°56'84N 1°12'71E

51°56'83N 1°12'88E

Extend 2m contour N to enclose

Replace depth 2.3m with depth 1.8m in 51°57'05N 1°10'74E (ILNW 66/18)

3 Woodbridge Haven (correction amended see ILNW 171/19, 244/20)

Move:

R can buoy **Knoll Spit** to 51°58'52N 1°23'23E

G con. buoy **Mid Knoll** to 51°58'65N 1°23'34E

For detailed information about the River Deben entrance yachtsmen are advised to consult the accompanying chartlet (revised 03/18) (ILNW 221/18)

4 Woodbridge Haven (correction amended see ILNW 244/20)

Move:

R can buoy **Knoll Spit** to 51°58'48N 1°23'23E

G con. buoy **Mid Knoll** to 51°58'60N 1°23'29E

For detailed information about the River Deben entrance yachtsmen are advised to consult the accompanying chartlet (revised 03/19) (ILNW 171/19)

5 Cork Sand

Insert drying height:

-0.5m in 51°54'12N 1°23'50E and extend 0m contour N to enclose

-0.3m in 51°54'53N 1°24'40E and extend 0m contour SE to enclose plus delete depth 0.7m close NW (ILNW 132/20)

6 Woodbridge Haven

Move:

G con. buoy **Mid Knoll** to 51°58'58N 1°23'24E

R can buoy **Knoll Spit** to 51°58'52N 1°23'18E

R can buoy **West Knoll** to 51°58'43N 1°23'07E

An official survey will be carried out in due course. When this data becomes available an updated chartlet will be issued. (ILNW 244/20)



Depths in Metres

This chart is a free download
NOT TO BE USED FOR NAVIGATION



Caution

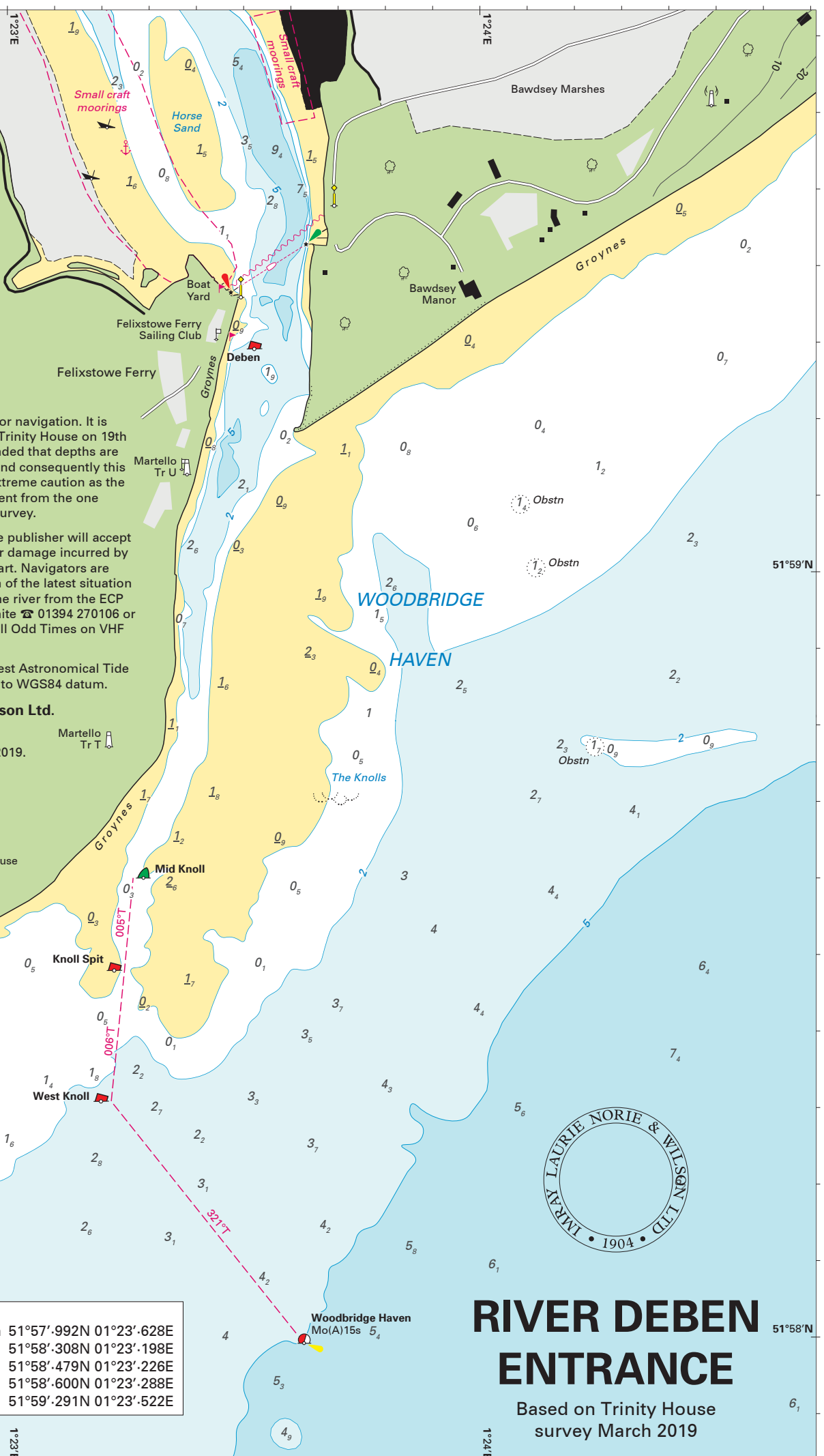
This chart is not to be used for navigation. It is based on a survey made by Trinity House on 19th March 2019. Users are reminded that depths are subject to constant change and consequently this chart should be used with extreme caution as the situation is likely to be different from the one depicted on the date of the survey.

Neither Trinity House nor the publisher will accept any liability for loss, injury or damage incurred by misuse of the data in this chart. Navigators are advised to seek confirmation of the latest situation before attempting to enter the river from the ECP Honorary Port Pilot John White ☎ 01394 270106 or 07803 476621 (mobile), or call Odd Times on VHF Ch 08.

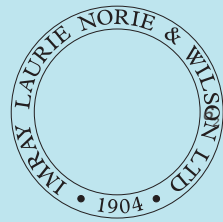
Soundings in metres at Lowest Astronomical Tide (LAT). Positions are referred to WGS84 datum.

Imray Laurie Norie & Wilson Ltd.
www.imray.com

© British Crown Copyright, 2019.
All rights reserved.



Buoy Positions	
Woodbridge Haven	51°57'.992N 01°23'.628E
West Knoll	51°58'.308N 01°23'.198E
Knoll Spit	51°58'.479N 01°23'.226E
Mid Knoll	51°58'.600N 01°23'.288E
Deben	51°59'.291N 01°23'.522E



RIVER DEBEN ENTRANCE

Based on Trinity House survey March 2019

Caution

This chart is not to be used for navigation. It is based on a survey made by Trinity House on 20th March 2019. Users are reminded that depths are subject to constant change and consequently this chart should be used with extreme caution as the situation is likely to be different from the one depicted on the date of the survey.

Neither Trinity House nor the publisher will accept any liability for loss, injury or damage incurred by misuse of the data in this chart. Navigators are advised to seek confirmation of the latest situation before attempting to enter the river from the ECP Honorary Port Pilot and Orford Harbourmaster Philip Attwood ☎ 07528 092635, or call *Chantry* on VHF Ch 08 (although note that he is based at Orford and may be out of radio range from the river entrance).

Soundings in metres at Lowest Astronomical Tide (LAT). Positions are referred to WGS84 datum.

Imray Laurie Norie & Wilson Ltd.
www.imray.com

© British Crown Copyright, 2019.

All rights reserved.



52°03'N

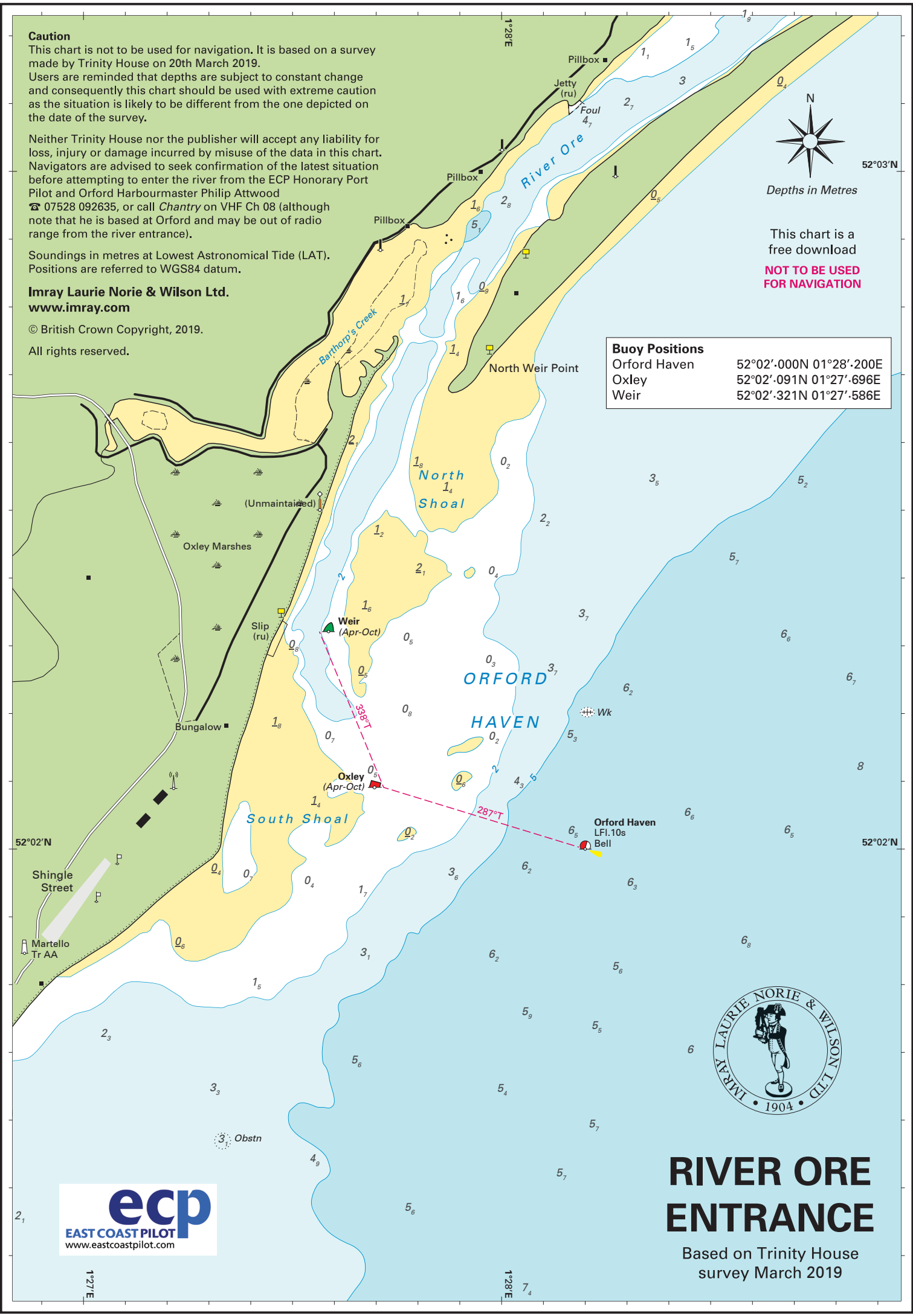
Depths in Metres

This chart is a free download

NOT TO BE USED FOR NAVIGATION

Buoy Positions

Orford Haven	52°02'.000N 01°28'.200E
Oxley	52°02'.091N 01°27'.696E
Weir	52°02'.321N 01°27'.586E



RIVER ORE ENTRANCE

Based on Trinity House survey March 2019



1°27'E

1°28'E

2₁

52°02'N

52°02'N

7₄