

Imray Correction Notice ICY2-1SF

10 September 2020

Chart Y2 WGS 84 Edition 2018

Versions available:

New Edition (corrected to March 2018)

Update (corrected to March 2019)

Update (corrected to March 2020)

NOTES

Below is a complete list of corrections issued since the 2018 edition of this chart was published.

Each correction is issued with an ILNW reference number and year.

Corrections are listed chronologically in ascending order.

For Update versions of this chart, please check the bottom left corner of the chart to determine the last applied correction.

Any further corrections will be applicable from that point onwards.

1 **Orford Haven** *(correction amended see ILNW 170/19, 245/20)*

Move:

R can buoy **Oxley** to 52°02'·08N 1°27'·71E

G con. buoy **Weir** to 52°02'·27N 1°27'·61E

For detailed information about the River Ore entrance yachtsmen are advised to consult the accompanying chartlet (revised 03/18) (ILNW 220/18)

2 **Whiting Bank**

Replace depth 8·1m with dangerous Wk sym in 52°01'·66N 1°30'·82E (ILNW 436/18)

3 **Orford Haven** *(correction amended see ILNW 245/20)*

Move G con. buoy **Weir** to 52°02'·32N 1°27'·59E

For detailed information about the River Ore entrance yachtsmen are advised to consult the accompanying chartlet (revised 03/19) (ILNW 170/19)

4 **Orford Haven** *(Correction amended INLW 366/20)*

Move:

R can buoy **Oxley** to 52°02'·02N 1°27'·96E

G con. buoy **Weir** to 52°02'·22N 1°27'·56E

An official survey will be carried out in due course. When this data becomes available an updated chartlet will be issued. (ILNW 245/20)

5 **Orford Haven**

Move G con. buoy **Weir** to 52°02'·20N 1°27'·58E (ILNW 366/20)

6 **Orford Ness**

Delete Lighthouse (disused) in 52°05'·03N 1°34'·45E (ILNW 451/20)

Caution

This chart is not to be used for navigation. It is based on a survey made by Trinity House on 20th March 2019. Users are reminded that depths are subject to constant change and consequently this chart should be used with extreme caution as the situation is likely to be different from the one depicted on the date of the survey.

Neither Trinity House nor the publisher will accept any liability for loss, injury or damage incurred by misuse of the data in this chart. Navigators are advised to seek confirmation of the latest situation before attempting to enter the river from the ECP Honorary Port Pilot and Orford Harbourmaster Philip Attwood ☎ 07528 092635, or call *Chantry* on VHF Ch 08 (although note that he is based at Orford and may be out of radio range from the river entrance).

Soundings in metres at Lowest Astronomical Tide (LAT). Positions are referred to WGS84 datum.

Imray Laurie Norie & Wilson Ltd.
www.imray.com

© British Crown Copyright, 2019.

All rights reserved.



52°03'N

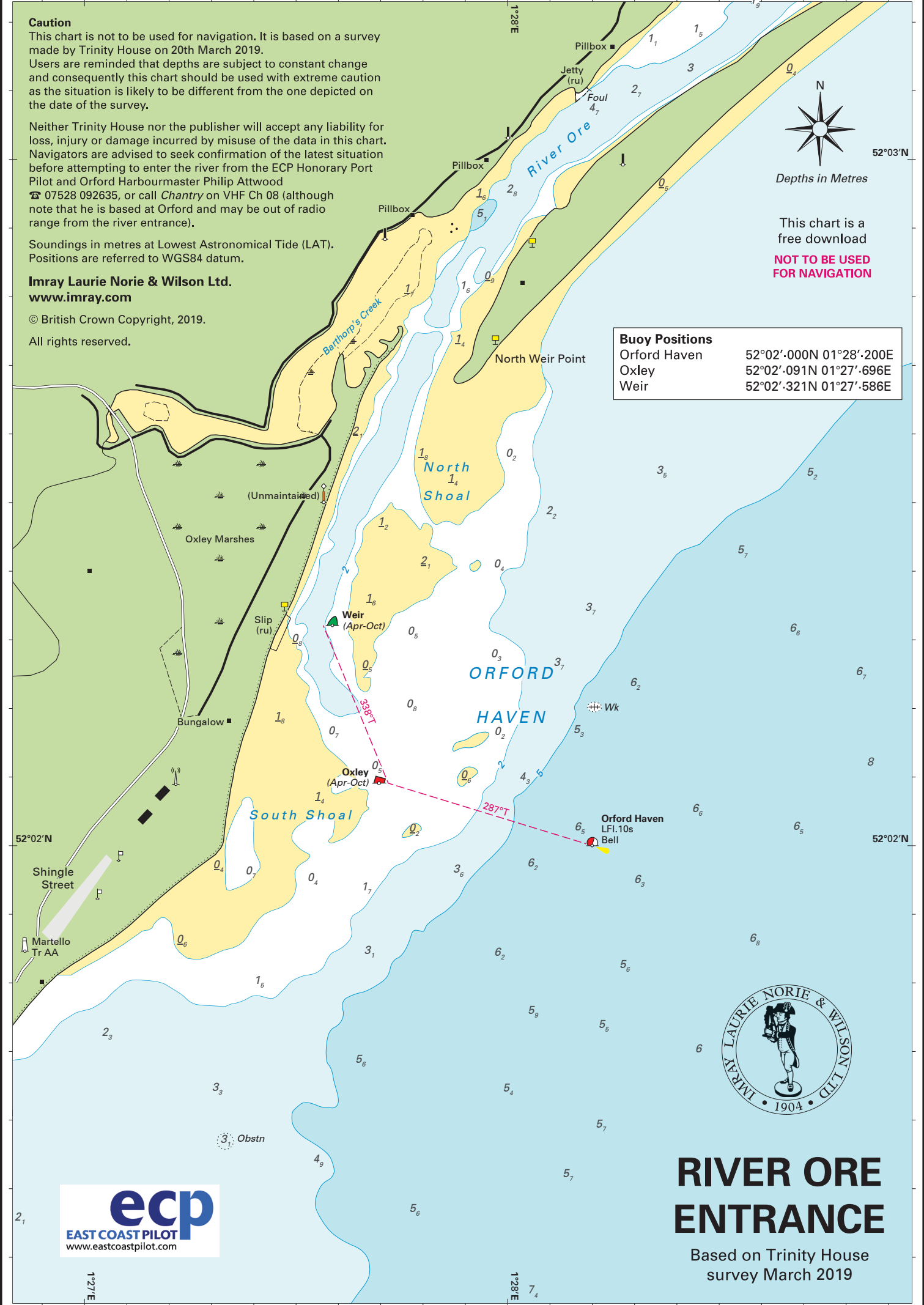
Depths in Metres

This chart is a free download

NOT TO BE USED FOR NAVIGATION

Buoy Positions

Orford Haven	52°02'.000N 01°28'.200E
Oxley	52°02'.091N 01°27'.696E
Weir	52°02'.321N 01°27'.586E



RIVER ORE ENTRANCE

Based on Trinity House survey March 2019