



Depths in Metres

This chart is a  
free download

**NOT TO BE USED  
FOR NAVIGATION**



#### Caution

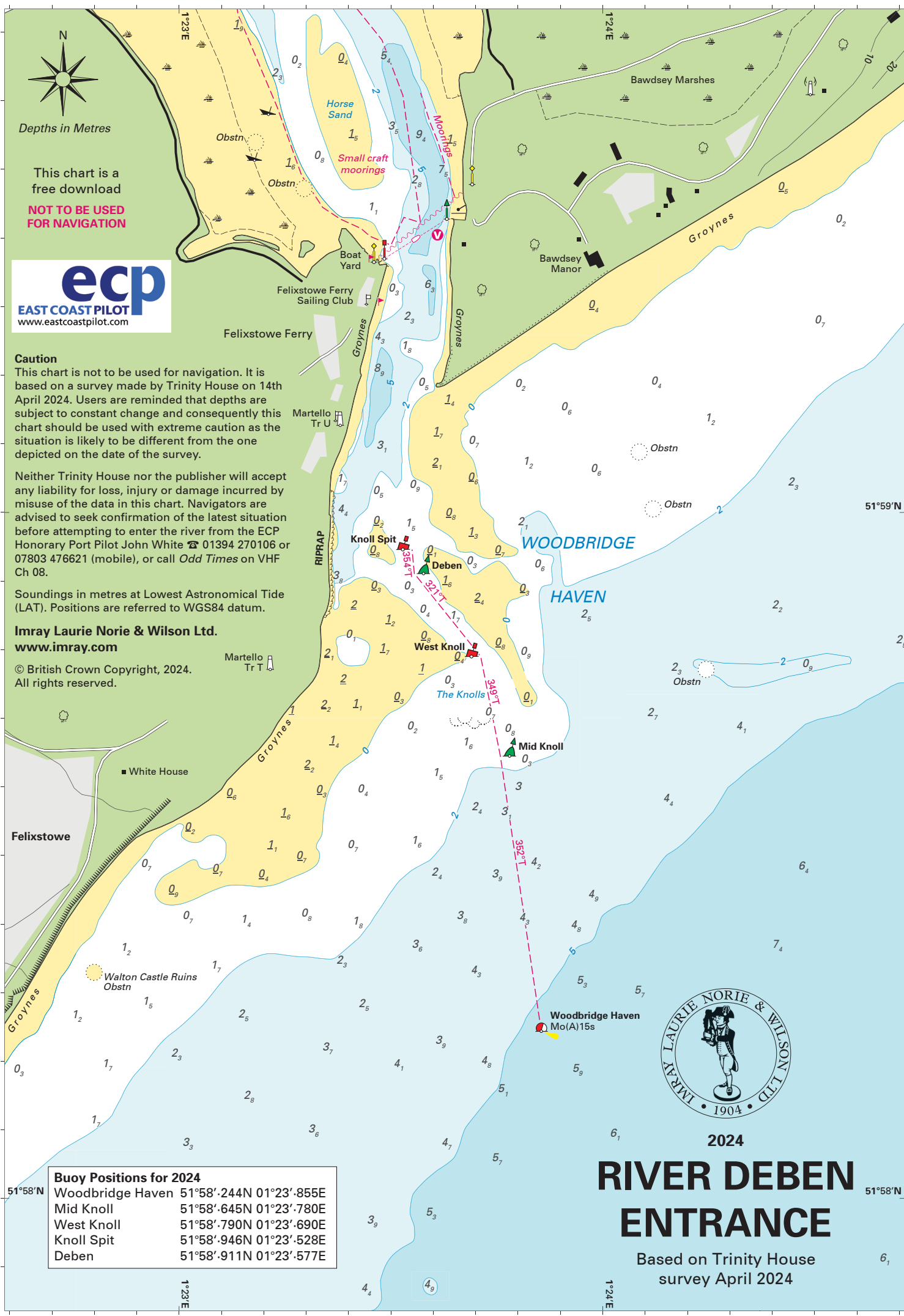
This chart is not to be used for navigation. It is based on a survey made by Trinity House on 14th April 2024. Users are reminded that depths are subject to constant change and consequently this chart should be used with extreme caution as the situation is likely to be different from the one depicted on the date of the survey.

Neither Trinity House nor the publisher will accept any liability for loss, injury or damage incurred by misuse of the data in this chart. Navigators are advised to seek confirmation of the latest situation before attempting to enter the river from the ECP Honorary Port Pilot John White ☎ 01394 270106 or 07803 476621 (mobile), or call *Odd Times* on VHF Ch 08.

Soundings in metres at Lowest Astronomical Tide (LAT). Positions are referred to WGS84 datum.

**Imray Laurie Norie & Wilson Ltd.**  
**www.imray.com**

© British Crown Copyright, 2024.  
All rights reserved.



#### Buoy Positions for 2024

Woodbridge Haven	51°58'.244N 01°23'.855E
Mid Knoll	51°58'.645N 01°23'.780E
West Knoll	51°58'.790N 01°23'.690E
Knoll Spit	51°58'.946N 01°23'.528E
Deben	51°58'.911N 01°23'.577E



2024

# RIVER DEBEN ENTRANCE

Based on Trinity House  
survey April 2024