

# Imray Correction Notice ICC28-5

23 May 2024

## Chart **C28** WGS 84

*Edition 2022*

*Versions available:*

*New Edition (corrected to September 2022)*

*Update (corrected to April 2023)*

*Update (corrected to February 2024)*

### NOTES

*Below is a complete list of corrections issued since the 2022 edition of this chart was published.*

*Each correction is issued with an ILNW reference number and year.*

*Corrections are listed chronologically in ascending order.*

*For Update versions of this chart, please check the bottom left corner of the chart to determine the last applied correction.*

*Any further corrections will be applicable from that point onwards.*

#### 1 **Approaches to Lowestoft**

Insert obstn symbol with assoc lgd *Unexploded Ordnance (2022)* in 52°26'·09N 1°47'·49E (ILNW 459/22)

#### 2 **Aldeburgh Ridge (Main chart & Plan F)**

Insert depth 2.3m and extend 5m contour to enclose in 52°07'·74N 1°37'·69E. Delete depth 3.5m close NW (ILNW 460/22)

#### 3 **Orford Haven (Plan F)** *(correction amended see ILNW 221/24)*

For detailed information about the River Ore entrance consult the accompanying chartlet (survey 02/23). For further details regarding the latest pilotage information of this area see [www.eastcoastpilot.com](http://www.eastcoastpilot.com) (ILNW 116/23)

#### 4 **Woodbridge Haven (Main chart & Plan G)** *(correction amended see ILNW 220/24)*

Move:

RW safewater Lt buoy **Woodbridge Haven** Mo(A)15s to 51°58'·24N 1°23'·86E

G con buoy **Mid Knoll** to 51°58'·67N 1°23'·83E (Plan G)

R can buoy **West Knoll** to 51°58'·82N 1°23'·64E (Plan G)

R can buoy **Knoll Spit** to 51°59'·00N 1°23'·48E (Plan G)

G con buoy **Deben** to 51°59'·05N 1°23'·53E (Plan G)

For detailed information about the River Deben consult the accompanying chartlet (survey 02/23). For further details regarding the latest pilotage information of this area see [www.eastcoastpilot.com](http://www.eastcoastpilot.com) (ILNW 117/23)

#### 5 **Holm Sand (Plan D)**

Insert depth:

1·4m in 52°29'·68N 1°47'·01E. Delete depth 6·6m close S

1·8m in 52°28'·29N 1°47'·70E

1·4m in 52°28'·05N 1°47'·70E. Delete 6·6m Wk close W and 3·3m depth close S

0·9m in 52°27'·71N 1°47'·58E. Delete depth 2·5m close S

Extend 2m contour of Holm Sand E to enclose above changes (ILNW 118/23)

#### 6 **Harbour Entrance (Plan C)**

Insert depth 2·2m in 52°34'·26N 1°44'·41E

Replace depth:

3·8m with 3·1m in 52°34'·30N 1°44'·40E

4·1m with 3·6m in 52°34'·26N 1°44'·49E (ILNW 122/23)

#### 7 **Woodbridge Haven (Plan G)**

Insert drying height -0·1m enclosed by 0m contour in 51°58'·73N 1°23'·83E (ILNW 198/23)

#### 8 **Sizewell Bank E**

Move Y special pillar Lt buoy Fl(5)Y.20s (2 buoys) PA in 52°12'·60N 1°41'·10E to 52°12'·45N 1°41'·06E (ILNW 203/23)

**9 Minsmere Haven & Lowestoft Approaches (Main chart & Plan D)**

Artificial nesting structure construction works are in progress, navigate with caution in the vicinity.

Insert Lt star:

**ANS 1** Fl.Y.5s3M in 52°14'·29N 1°39'·02E (Main chart)

**ANS 2** Fl.Y.5s3M in 52°27'·64N 1°45'·81E (Plan D)

**ANS 3** Fl.Y.2·5s3M in 52°27'·72N 1°45'·82E (Plan D) (ILNW 219/23)

**10 Aldeburgh Ridge (Main chart & Plan F)**

Insert depth 0·9m in 52°06'·84N 1°36'·83E. Extend contour to enclose (ILNW 288/23)

**11 Approaches to Lowestoft**

Insert overfalls symbol in 52°26'·29N 1°46'·84E (ILNW 146/24)

**12 Great Yarmouth N**

Move BY N card pillar Lt buoy **N Scroby** VQ from 52°41'·39N 1°46'·47E to 52°41'·56N 1°46'·53E (ILNW 160/24)

**13 Woodbridge Haven (Plan G)**

Move:

G con buoy **Mid Knoll** to 51°58'·65N 1°23'·78E

R can buoy **West Knoll** to 51°58'·79N 1°23'·69E

R can buoy **Knoll Spit** to 51°58'·95N 1°23'·53E

G con buoy **Deben** to 51°58'·91N 1°23'·58E

For detailed information about the River Deben consult the accompanying chartlet (survey 04/24). For further details regarding the latest pilotage information and aerial photography of this area see [www.eastcoastpilot.com](http://www.eastcoastpilot.com) (ILNW 220/24)

**14 Orford Haven (Plan F)**

Move:

R can buoy **Oxley** to 52°02'·07N 1°27'·70E

For detailed information about the River Ore entrance consult the accompanying chartlet (survey 04/24). For further details regarding the latest pilotage information and aerial photography of this area see [www.eastcoastpilot.com](http://www.eastcoastpilot.com) (ILNW 221/24)



Depths in Metres

This chart is a free download  
**NOT TO BE USED FOR NAVIGATION**



**Caution**

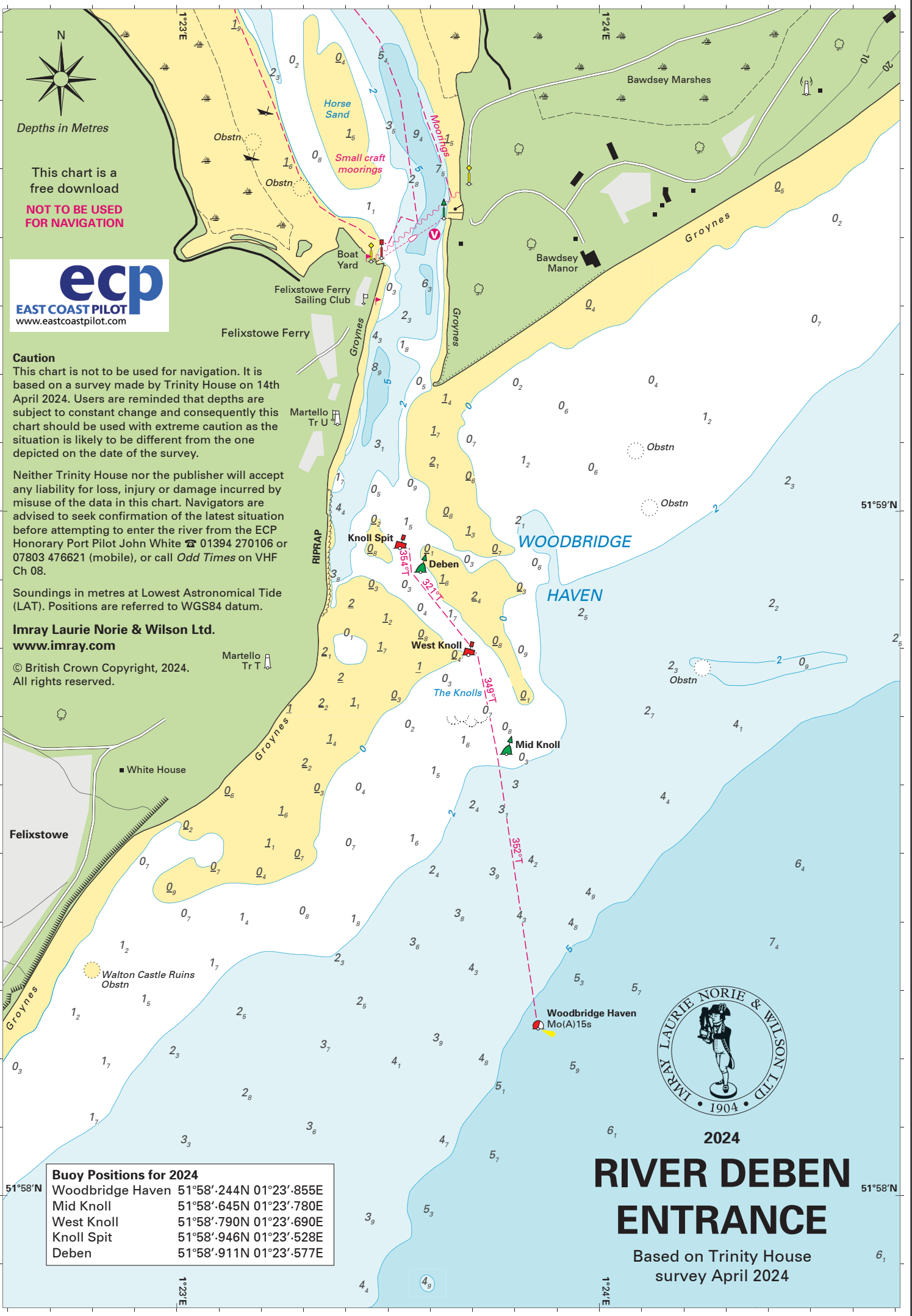
This chart is not to be used for navigation. It is based on a survey made by Trinity House on 14th April 2024. Users are reminded that depths are subject to constant change and consequently this chart should be used with extreme caution as the situation is likely to be different from the one depicted on the date of the survey.

Neither Trinity House nor the publisher will accept any liability for loss, injury or damage incurred by misuse of the data in this chart. Navigators are advised to seek confirmation of the latest situation before attempting to enter the river from the ECP Honorary Port Pilot John White ☎ 01394 270106 or 07803 476621 (mobile), or call *Odd Times* on VHF Ch 08.

Soundings in metres at Lowest Astronomical Tide (LAT). Positions are referred to WGS84 datum.

**Imray Laurie Norie & Wilson Ltd.**  
[www.imray.com](http://www.imray.com)

© British Crown Copyright, 2024.  
All rights reserved.



Buoy Positions for 2024	
Woodbridge Haven	51°58'.244N 01°23'.855E
Mid Knoll	51°58'.645N 01°23'.780E
West Knoll	51°58'.790N 01°23'.690E
Knoll Spit	51°58'.946N 01°23'.528E
Deben	51°58'.911N 01°23'.577E



2024

# RIVER DEBEN ENTRANCE

Based on Trinity House survey April 2024

**Caution**

This chart is not to be used for navigation. It is based on a survey made by Trinity House on 26th April 2024. Users are reminded that depths are subject to constant change and consequently this chart should be used with extreme caution as the situation is likely to be different from the one depicted on the date of the survey.

Neither Trinity House nor the publisher will accept any liability for loss, injury or damage incurred by misuse of the data in this chart. Navigators are advised to seek confirmation of the latest situation before attempting to enter the river from the ECP Honorary Port Pilot and Orford Harbourmaster Matt Smy ☎ 07528 092635, or call *Chantry* on VHF Ch 08 (although note that he is based at Orford and may be out of radio range from the river entrance).

Soundings in metres at Lowest Astronomical Tide (LAT). Positions are referred to WGS84 datum.

**Imray Laurie Norie & Wilson Ltd.**  
[www.imray.com](http://www.imray.com)

© British Crown Copyright, 2024.

All rights reserved.



52°03'N

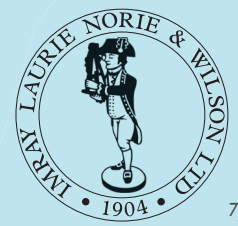
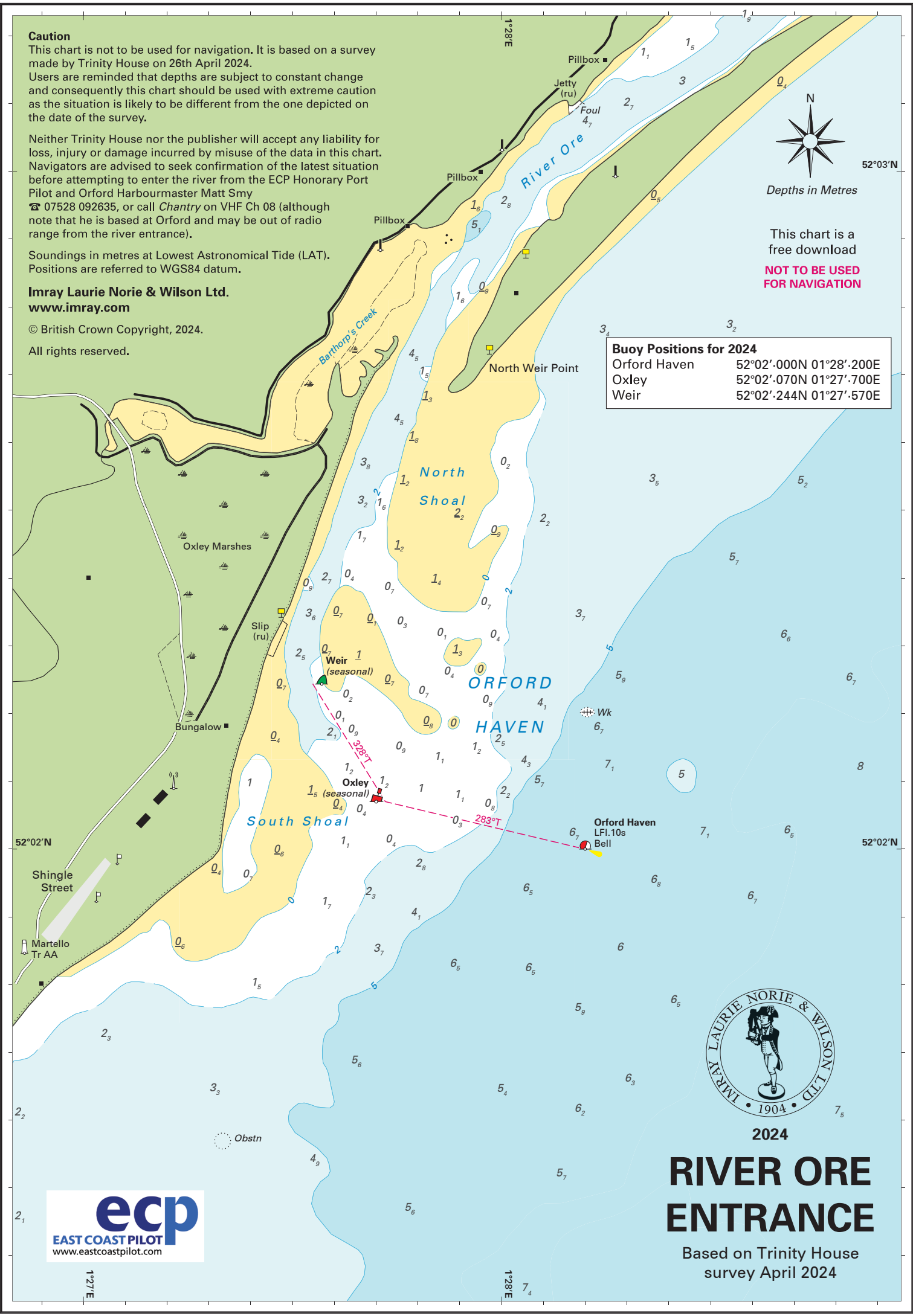
Depths in Metres

This chart is a free download

**NOT TO BE USED FOR NAVIGATION**

**Buoy Positions for 2024**

Orford Haven	52°02'.000N 01°28'.200E
Oxley	52°02'.070N 01°27'.700E
Weir	52°02'.244N 01°27'.570E



2024  
**RIVER ORE ENTRANCE**

Based on Trinity House survey April 2024