

Imray Correction Notice ICC65-2

17 April 2024

Chart **C65** WGS 84

Edition 2016

Versions available:

New Edition (corrected to July 2016)

Update (corrected to August 2017)

Update (corrected to August 2018)

Update (corrected to August 2019)

Update (corrected to March 2021)

Update (corrected to March 2022)

Update (corrected to April 2024)

NOTES

Below is a complete list of corrections issued since the 2016 edition of this chart was published.

Each correction is issued with an ILNW reference number and year.

Corrections are listed chronologically in ascending order.

For Update versions of this chart, please check the bottom left corner of the chart to determine the last applied correction.

Any further corrections will be applicable from that point onwards.

1 **Mingary Bay**

A wave farm has been established and submarine power cables laid in Mingary Bay.

Insert wave farm sym. centred on 56°41'·42N 6°03'·94W

Yachtsmen are advised to exercise caution in the vicinity. (ILNW 37/17)

2 **Lynn of Lorn (Plan E)**

Insert depth 1·1m enclosed by 2m contour in 56°32'·15N 5°25'·57W. Delete depth 2·5m close W. (ILNW 84/17)

3 **Tobermory Bay (Plan C)**

Delete:

Lgd *Seaplane Operating Area* centred on 56°37'·22N 6°03'·35W

Lt Fl.Y.5s2M in 56°36'·99N 6°03'·49W (ILNW 125/17)

4 **Oban Bay Safe Navigation (Plan G)**

All vessels with a length of 20 metres or more navigating the northern entrance of Oban Bay are requested to broadcast a warning message on VHF Ch 16, followed by further details on Ch 12. A voluntary code for safe navigation exists within the area of Oban Bay. For further information see www.obanharbour.scot (ILNW 302/17)

5 **Cardingmill Bay (Plan G)**

Insert:

Y pillar buoy in 56°24'·65N 5°29'·43W

Y spec. pillar Lt buoy Fl.Y.5s in 56°24'·52N 5°29'·72W (ILNW 308/17)

6 **Oban (Plan G)** (*correction superseded - see ILNW 298/18*)

Insert legend *Marina under const'n* (2017) centred on 56°24'·95N, 5°28'·60W (ILNW 435/17)

7 **Oban (Plan G)**

Insert accompanying block correction centred on 56°24'·98N 5°28'·61W (ILNW 298/18)

8 **Corran Narrows NE**

Insert Lt Fl.5s4M&DirWRG.2s4M in 56°43'·62N 5°13'·83W (ILNW 381/18)

9 Castle Bay (Plan A)

New marina facilities have been completed in Castle Bay.

Insert:

Lt Fl.R.4s in 56°57'·27N 7°29'·53W

Jetty, line, joining:

56°57'·25N 7°29'·68W (shore)

56°57'·24N 7°29'·66W

56°57'·26N 7°29'·56W

and

56°57'·25N 7°29'·60W

56°57'·23N 7°29'·59W

56°57'·24N 7°29'·55W

56°57'·27N 7°29'·53W (light) (ILNW 542/18)

10 Loch Ceann Traigh

Insert dangerous wreck sym. plus assoc lgd PA in 56°46'·11N 5°54'·07W (ILNW 113/19)

11 Point of Ardnamurchan

Amend range of **LT HO**. Fl(2)20s55m22M to 18M in 56°43'·62N 6°13'·56W. AIS remains unchanged. (ILNW 130/19)

12 Oban (Plan G)

Insert G con Lt buoy Fl.G.2s:

No 1 in 56°25'·33N 5°29'·08W

No 3 in 56°25'·28N 5°29'·08W

No 5 in 56°25'·22N 5°29'·09W

No 7 in 56°25'·16N 5°29'·06W

No 9 in 56°25'·10N 5°28'·95W

Insert R can Lt buoy Fl.R.2s:

No 2 in 56°25'·35N 5°29'·25W

No 4 in 56°25'·27N 5°29'·25W

Delete YBY W cardinal pillar Lt buoy VQ(9)10s in 56°25'·19N 5°29'·10W (ILNW 262/19)

13 Mull, Loch Spelve

Delete Lt Fl.G.5s3m2M in 56°23'·24N 5°42'·04W (ILNW 470/19)

14 Glasnacardoch Bay N

Insert rock which covers & uncovers plus assoc. drying height -2.2m in 56°59'·93N 5°50'·19W (ILNW 599/19)

15 Dunstaffnage Bay (Plan F)

Move R port can Lt buoy Fl.R.3s in 56°27'·18N 5°26'·08W to 56°27'·22N 5°26'·09W (ILNW 677/19)

16 Loch Scresort, Rum

Insert Lt Fl.R.5s in 57°00'·68N 6°16'·01W. This marks the end of a single jetty. (ILNW 314/20)

17 Corpach (Plan D) (*correction superseded see ILNW 362/23*)

Insert lgd Marina under construction centred on 56°50'·55N 5°07'·50W (ILNW 380/20)

18 Tobermory (Plan C) (*Correction amended see - ILNW 2/21*)

Insert pontoon joining:

56°37'·22N 6°04'·03W

56°37'·23N 6°03'·94W

Insert Lt:

Fl.G.5s in 56°37'·23N 6°03'·94W

Fl.R.5s in 56°37'·20N 6°03'·94W

Insert lgd Fairway (buoyed) centred on 56°37'·21N 6°03'·76W

Delete mooring buoy **CAL MAC** in 56°37'·24N 6°03'·66W (ILNW 569/20)

19 Tobermory (Plan C)

Insert mooring buoy **CAL MAC** in 56°37'·24N 6°03'·66W (ILNW 2/21)

20 Fort William (Plan D)

Delete G con Lt buoy Fl.G.3s in 56°49'·23N 5°07'·14W (ILNW 69/21)

21 Loch Linnhe, Rubha Cuil-cheanna

Insert Lt Dir.WRG.2s5M & Fl(2)G.8s5M in 56°42'·31N 5°14'·80W (ILNW 213/21)

22 Corpach S (Plan D)

Delete dolphin centred on 56°50'·43N 5°07'·95W (ILNW 375/21)

23 Muck

Amend leading line from Lt DirFl.WRG.3s in 56°49'·99N 6°13'·70W to 319° (ILNW 425/21)

24 Coll E

Delete Y spar Lt buoy *Current Meters* Fl(5)Y.20s in 56°37'·49N 6°24'·07W (ILNW 90/23)

25 Fort William (Plan D)

Insert Lt Fl(2)G.8s2m2M in 56°48'·96N 5°07'·02W (ILNW 99/23)

26 Gunna Sound

Insert Obsn depth 4·4m plus assoc lgd *ODAS* centred on 56°33'·44N 6°43'·10W (ILNW 188/23)

27 Sound of Luing (Plan J)

Amend sectors at Lt Fl.WRG.6s9m6/4M in 56°14'·77N 5°40'·18W to 002° - W - 012° - R - 030° - W - 201° - G - 002° (ILNW 191/23)

28 Corpach (Plan D)

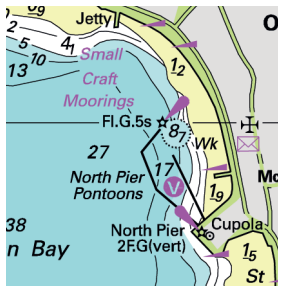
Replace lgd *Marina under construction* with marina symbol and assoc lgd *Corpach Marina* centred on 56°50'·53N 5°07'·50W.

Corpach Marina can be contacted via:

Tel: 07410 884902. VHF Ch 80. www.corpachmarina.co.uk (ILNW 362/23)

29 Scientific Instruments

Insert lgd *Scientific Instruments* in 56°10'·15N 6°27'·87W (ILNW 172/24)



Block correction for C65 (Plan G)
ILNW 298/18