

# Imray Correction Notice

ICA28-2

26 February 2025

## Chart A28 WGS 84

Edition 2017

*Versions available:*

*New Edition (corrected to January 2017)*

*Update (corrected to October 2019)*

*Update (corrected to October 2020)*

*Update (corrected to October 2021)*

*Update (corrected to October 2022)*

*Update (corrected to October 2023)*

*Update (corrected to July 2024)*

### NOTES

*Below is a complete list of corrections issued since the 2017 edition of this chart was published.*

*Each correction is issued with an ILNW reference number and year.*

*Corrections are listed chronologically in ascending order.*

*For Update versions of this chart, please check the bottom left corner of the chart to determine the last applied correction.*

*Any further corrections will be applicable from that point onwards.*

#### 1 Guadeloupe, Port-Louis (Main chart & Plan H)

Amend Lt Q(9)15s10m11M to Fl(3)12s10M in 16°25'·11N 61°32'·04W (ILNW 501/17)

#### 2 Basse-Terre, Monchy

Amend Lt Q(9)15s29m9M to Fl(3)12s29m9M in 16°05'·43N 61°46'·27W (ILNW 661/17)

#### 3 AIDS TO NAVIGATION

Charted aids to navigation throughout the Eastern Caribbean should be used with caution. Many aids to navigation either moved or were destroyed during recent hurricanes in this region. The replacements and repositioning of these aids is progressing slowly. Yachtsmen are advised to use visual navigation. (Street 2018) (ILNW 574/18)

#### 4 Rivière Salée (Plan E)

Replace note **OPENING BRIDGES - RIVIÈRE SALÉE** with the following note:

##### **RIVIÈRE SALÉE BRIDGES**

The Rivière Salée is closed to navigation to mast vessels. What were previously opening bridges are now fixed bridges. (Street 2018) (ILNW 575/18)

#### 5 Les Saintes, Terre-de-Haut

Replace depth 0·4m with Rk awash sym in 15°52'·83N 61°35'·21W

Delete anchorage sym in 15°51'·79N 61°36'·09W (ILNW 592/18)

#### 6 Sainte François (Plan G)

Insert Lt Fl.R.2·5s3m2M in 16°15'·05N 61°15'·87W (ILNW 80/19)

#### 7 Petit Cul-de-Sac Marin

Insert Or spher. buoy *FAD* in 16°10'·62N 61°29'·70W (ILNW 275/19)

#### 8 Deshaies (Plan A)

Insert:

R starboard pillar Lt buoy **D1** Fl.R.4s in 16°18'·37N 61°47'·84W

G port pillar Lt buoy **D2** Fl.G.4s in 16°18'·39N 61°47'·84W (ILNW 540/19)

#### 9 Pointe-à-Pitre Approaches

A new secondary approach channel has been established in Petit Cul-de-Sac Marin. Insert lgd *Buoyed channel* orientated NNW to SSE centred on 16°10'·35N 61°32'·00W

Move YB S cardinal spar Lt buoy **PP** Q(6)+LFl.15s in 16°09'·57N 61°31'·12W to 16°09'·57N 61°31'·33W (ILNW 43/20)

**10 Pointe-à-Pitre Approaches (Plan D)**

Insert accompanying block correction centred on 16°10'·36N 61°31'·56W (ILNW 43/20)

**11 Pointe-à-Pitre Approaches (Plan D)**

Insert Racon sym and assoc lgd A/S at Lt buoy:

**Caye Plate** in 16°11'·00N 61°32'·28W

**GP5** in 16°10'·97N 61°32'·06W (ILNW 378/20)

**12 Saint-Marie E**

Insert BYB E cardinal Lt buoy Q(3)10s in 16°06'·05N 61°32'·66W (ILNW 402/20)

**13 Pointe-a-Pitre (Plan E)**

Amend R con Lt buoy **BF1** from Fl(3)R.12s to Iso.R.4s in 16°13'·32N 61°32'·01W

Delete R con Lt buoy Fl.R.2.5s in 16°13'·23N 61°31'·83W (ILNW 491/20)

**14 Saint Louis, Marie-Galante**

Insert submarine cable joining:

15°57'·92N 61°19'·09W

15°58'·02N 61°19'·75W

15°58'·32N 61°20'·22W

15°58'·64N 61°20'·41W (ILNW 636/20)

**15 Pointe Noire N**

Insert Lt Fl.R&G.4s6M in 16°15'·65N 61°48'·37W (ILNW 377/22)

**16 Îlet à Cochons N (Plan E) (*correction amended see ILNW 251/23*)**

Insert restricted area, no anchoring, line joining:

16°13'·54N 61°32'·24W

16°13'·00N 61°32'·02W

16°12'·93N 61°32'·43W

16°13'·44N 61°32'·75W

Mooring of any vessel is now prohibited in this area.

Delete anchorage sym. in:

16°13'·24N 61°32'·50W

16°13'·01N 61°32'·25W (ILNW 410/22)

**17 Marine Reserve**

A new marine reserve has been established between Marigot and Pointe de la Grande Vigie.

Insert marine reserve restricted area linework joining:

16°05'·35N 61°46'·01W

16°05'·35N 61°52'·00W (W edge of chart)

And

16°30'·87N 61°27'·89W

16°31'·00N 61°30'·00W

16°29'·86N 61°34'·02W (ILNW 183/23)

**18 Îlet à Cochons N (Plan E)**

The area N of Îlet à Cochons is now a permitted anchoring area. Insert anchorage symbol centred on 16°13'·26N 61°32'·39W (ILNW 251/23)

**19 Basse-Terre, Pointe des Corps de Garde**

Delete limit of firing practice area joining:

16°03'·90N 61°46'·23W (coast)

16°03'·90N 61°49'·84W

16°02'·88N 61°49'·52W

16°02'·02N 61°48'·62W

16°00'·95N 61°48'·50W

16°00'·96N 61°44'·84W (coast)

plus lgd *Firing Practice Area* (*see Note*) and assoc. note FIRING PRACTICE AREA (ILNW 253/23)

**20 Pointe de la Grande Vigie**

Move Y spher Lt buoy **Met Stn 41096** Fl(5)Y.20s from 16°31'·85N 61°24'·21W to 16°31'·02N 61°24'·99W (ILNW 368/23)

**21 Pointe-à-Pitre Approaches (Plan D)**

Delete AIS at Lt buoy:

**GP5** Q.R in 16°10'·97N 61°32'·06W

**PP7** Fl(2)R.6s in 16°11'·00N 61°32'·28W (ILNW 441/24)

**22 Pointe-à-Pitre (Plan E)**

Amend light at Lt buoy **PJ3** Fl.G.2·5s to Fl.R.2·5s in 16°14'·13N 61°32'·61W

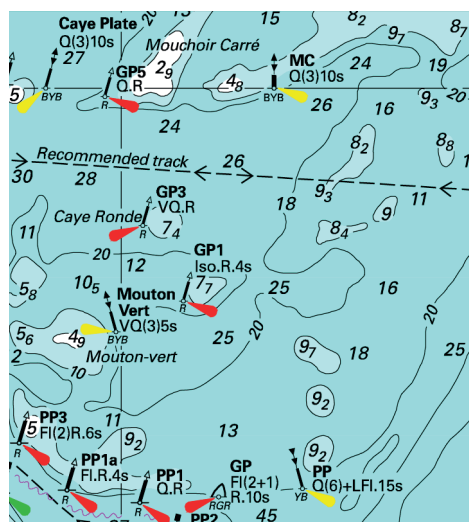
Amend Obstn depth 5.9m to 5m in 16°14'·19N 61°32'·60W

Add depth 0.4m to Obstn in 16°14'·30N 61°32'·75W

Insert Obstn depth 3.1m in 16°13'·78N 61°32'·07W

Delete drying wreck -0.8m in 16°14'·25N 61°32'·77W

Recent survey has shown that depths in this area may differ to that charted. Navigate with caution. (ILNW 25/25)



Block correction for A28 (Plan D)  
ILNW 43/20