

Imray Correction Notice

ICY17B-1

18 November 2024

Chart Y17B

WGS 84

Edition 2022

Versions available:

New Edition (corrected to September 2022)

Update (corrected to April 2023)

Update (corrected to February 2024)

NOTES

Below is a complete list of corrections issued since the 2022 edition of this chart was published.

Each correction is issued with an ILNW reference number and year.

Corrections are listed chronologically in ascending order.

For Update versions of this chart, please check the bottom left corner of the chart to determine the last applied correction.

Any further corrections will be applicable from that point onwards.

1 Barrow Deep & North Knob

Insert drying height:

-0.2m in 51°32'·56N 1°01'·60E enc. by 0m contour & delete depth 0.6m close E

-0.1m in 51°33'·79N 1°08'·08E extend 0m contour NW to enc.

Insert depth:

1.3m in 51°33'·61N 1°07'·77E extend 2m contour NW to enc. & delete depth 3m close N

0.6m in 51°34'·52N 1°07'·49E enc. by 2m contour (ILNW 470/22)

2 Whitaker Channel *(correction superseded see ILNW 20/23)*

Delete Y special purpose pillar Lt buoy FI(5)Y in 51°39'·83N 1°01'·56E (ILNW 8/23)

3 Sunken Buxey, Approaches to River Crouch

Insert accompanying block correction centred on 51°39'·76N 1°01'·65E (ILNW 20/23)

4 Ray Sand

Insert Y special pillar buoy **Raysand North** in 51°40'·81N 1°00'·57E

Move Y can buoy **Raysand** in 51°39'·10N 0°59'·50E to 51°39'·84N

1°00'·57E

Delete RW safewater pillar buoy

Raysand North in 51°40'·70N 0°59'·50E

Raysand Middle in 51°40'·00N 0°59'·00E (ILNW 228/23)

5 River Crouch

Insert mooring buoy in 51°37'·29N 0°50'·51E (ILNW 305/24)

6 Spitway E

Insert *Wk* depth 3.7m in 51°42'·84N 1°08'·71E (ILNW 342/24)

7 Barrow Swatchway

Insert drying height:

-0.1m enclosed by 0m contour in 51°36'·71N 1°09'·29E. Delete depth 0.5m close E

-0.3m in 51°36'·21N 1°09'·45E. Extend 0m contour N to enclose. (ILNW 355/24)

8 Spitway

Insert drying heights:

-1.2m in 51°41'·97N 1°07'·10E

-0.2m in 51°42'·05N 1°07'·40E and extend 0m contour E to enclose

Insert depths:

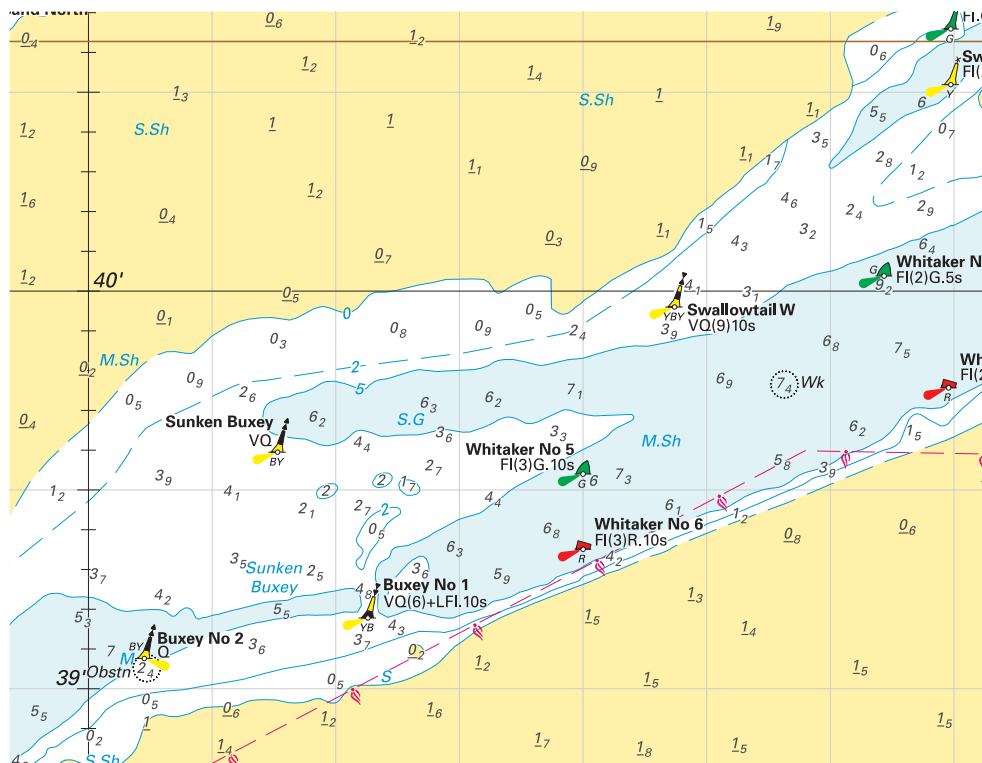
1.3m in 51°42'·22N 1°08'·49E

6.9m in 51°42'·02N 1°09'·17E

1.3m in 51°42'·60N 1°09'·40E (ILNW 430/24)

9 **West Barrow**

Insert depth 0.7m in 51°32'·41N 1°00'·45E and extend 2m contour S to enclose (ILNW 580/24)



Block correction for Y17B
ILNW 20/23