

Imray Correction Notice ICM33-2

25 July 2024

Chart M33 WGS 84

Edition 2015

Versions available:

New Edition (corrected to September 2015)

Update (corrected to April 2021)

Update (corrected to April 2022)

Update (corrected to April 2023)

Update (corrected to March 2024)

NOTES

Below is a complete list of corrections issued since the 2015 edition of this chart was published.

Each correction is issued with an ILNW reference number and year.

Corrections are listed chronologically in ascending order.

For Update versions of this chart, please check the bottom left corner of the chart to determine the last applied correction.

Any further corrections will be applicable from that point onwards.

1 **Porto di Ancona (Plan E)**

Amend range of Lt on outer breakwater to 7M in:

43°37'·70N 13°29'·44E

43°37'·26N 13°29'·07E (ILNW 437/15)

2 **Latitude label (Plan G)**

The Latitude label E of Nuovo Molo di Levante should read 42°28'·0N not 42°28'·5N as currently shown. All other labels are correct. (ILNW 473/15)

3 **Ravenna NE (Main chart & Plan A)**

Delete dangerous wreck in 44°29'·43N 12°22'·88E (ILNW 490/15)

4 **Pesaro NE**

Insert circular dangerline and lgd *Obstn* in 44°03'·1N 13°12'·8E (ILNW 499/15)

5 **Porto Garibaldi NE**

Insert Y Lt beacon FI(5)Y.20s4M in 44°44'·31N 12°27'·16E. Delete special can Lt buoy close NE (ILNW 500/15)

6 **Approaches to Ravenna (Main chart & Plan A) (correction amended see ILNW 394/23)**

Insert BuY cylindrical emergency Wk marking Lt buoy with a cross topmark Al.Oc.BuY.3s in 44°29'·68N 12°21'·71E. Delete BuY Lt beacon close W. (ILNW 561/15)

7 **Pescara N**

Replace Y special can Lt buoy FI(2)Y.10s with circular obstn symbol and assoc. lgd *Obstn* in 42°34'·2N 14°09'·0E (ILNW 529/16)

8 **Ancona (Main chart & Plan E)**

Main chart

Amend range of Lt to 5M in 43°37'·5N 13°29'·6E

Plan E

Amend range of Lt to 5M in:

43°37'·53N 13°29'·64E

43°37'·35N 13°29'·72E (ILNW 530/16)

9 **Approaches to Ravenna (Plans A & B)**

Amend Lt desc. to FI(2)G.6s8M in 44°29'·86N 12°18'·80E (ILNW 547/16)

10 **Ancona (Main chart & Plan E)** (correction amended see ILNW 341/19)

Main chart

Insert Lt FI(2)R.6s8M plus racon sym. & assoc. lgd Racon(A) in 43°37'·9N 13°29'·5E

Delete Lt FI.R.4s11m5M plus racon sym. & assoc. lgd Racon(A) close S

Plan E

Insert the accompanying block correction centred on 43°37'·28N 13°29'·54E (ILNW 595/16)

11 **Ancona (Plan E)**

Delete Lt F.R.7m3M in 43°37'·89N 13°30'·16E

Amend range of Lt:

FI.R.3s8m8M to 3M in 43°37'·43N 13°30'·00E

FI.G.3s11m8M to 3M in 43°37'·36N 13°29'·86E (ILNW 34/17)

12 **Senigallia**

Delete fog signal Horn Mo(D)45s at Lt in 43°43'·3N 13°13'·4E (ILNW 43/17)

13 **Porto de Ravenna (Plans A & B)**

Delete fog signal:

Horn(3)48s at Lt in 44°29'·70N 12°18'·86E (Plans A & B)

Horn Mo(H)45s at Lt in 44°29'·60N 12°17'·52E (Plan B) (ILNW 86/17)

14 **Ancona NE**

Add lgd PA to dangerous Wk sym. in 43°39'·13N 13°24'·90E (ILNW 327/17)

15 **Porto Civitanova**

Amend Lt Mo(C)20s42m11M to FI(4)20s42m11M in 43°18'·7N 13°43'·6E (ILNW 329/17)

16 **Approaches to Ravenna (Main chart & Plan A)**

Main chart

Amend Lt FI.10s6M to LFI.10s6M in 44°30'·00N 12°20'·70E

Plan A

Insert RW safe water Lt Bn LFI.10s5m6M in 44°29'·95N 12°20'·63E

Delete RB Lt Bn FI.10s6M close W (ILNW 405/17)

17 **Fano (Main chart & Plan D)**

Insert fog signal Horn Mo(G)48s at Lt FI.5s21m15M in 43°51'·06N 13°00'·93E (ILNW 461/18)

18 **Porto di Ravenna (Plan B)**

Replace foul sym. with *Obstn* depth 2·7m in 44°29'·45N 12°17'·82E (ILNW 179/19)

19 **Pescara (Plan G)**

Amend range of Lt:

FI.G.4s13m8M to 1M in 42°28'·17N 14°13'·74E

FI.R.4s13m8M to 1M in 42°28'·16N 14°13'·79E

FI(2)R.10s10m8M to 7M in 42°28'·23N 14°13'·99E

FI(2)G.10s10m5M to 7M in 42°28'·32N 14°14'·07E (ILNW 237/19)

20 **Pescara**

Amend range of Lt FI.R&FI.G.8M to 1M in 42°27'·7N 14°13'·7E (ILNW 237/19)

21 **Ancona (Main chart & Plan E)**

Delete radar Bn Racon(A) & assoc. racon sym. at Lt FI(2)R.6s12m8M (FI(2)R.6s8M - Main chart) in 43°37'·95N 13°29'·49E (ILNW 341/19)

22 **Rimini (Plan C)**

Insert fog signal Horn Mo(W)48s at Lt FI.R.3s10m8M in 44°04'·90N 12°34'·46E (ILNW 617/19)

23 **Approaches to Ancona**

The Traffic Separation Scheme in the approaches to Ancona has been amended and a new TSS separated by a separation zone has been established to the W.

The new separation zone is centred on a line between 43°47'·5N 13°27'·7E (approx.) and 43°42'·3N 13°26'·1E (approx.)

Full details, when available, will be included on the next printing of this chart. (ILNW 22/20)

24 **Approaches to Ravenna (Main chart & Plan A)**

Move lit platform **AGIP 1** from 44°28'·36N 12°21'·33E to 44°28'·57N 12°21'·81E (ILNW 336/20)

25 Approaches to Rimini

Delete dangerous Wk symbol in:
44°08'·62N 12°38'·12E
44°06'·69N 12°41'·82E (ILNW 623/20)

26 Ancona SE

Insert Y special purpose super Lt buoy ODAS FI(5)Y.20s in 43°24'·30N 13°45'·00E (ILNW 54/21)

27 Pula W

Insert BuY emergency wk pillar Lt buoy Q.BuY with A/S in 44°47'·06N 13°15'·80E and add assoc. entry prohibited area at a radius of 2M. Delete lit platform **IVANA-D** close W (ILNW 211/21)

28 Pescara SE

Insert Lt FI.R&G.5s3M in 42°25'·65N 14°17'·12E (ILNW 266/21)

29 Porto di Fano (Plan D)

Delete Lt FI.Y.3s in 43°51'·16N 13°00'·92E (ILNW 99/22)

30 Porto di San Benedetto del Tronto (Plan F)

Insert Lt FI.G.3s8m8M in 42°57'·55N 13°53'·40E
Amend Lt desc. FI.G.3s8m8M to F.Y.8m4M in 42°57'·44N 13°53'·43E (ILNW 100/22)

31 Porto di Fano (Plan D)

Insert foul, depth 4·5m, in 43°51'·31N 13°01'·22E
Delete dangerous Wk sym. PA and associated restricted area, *No Entry*, centred on 43°51'·35N 13°01'·21E (ILNW 101/22)

32 Ancona NW

Delete dangerous Wk sym. (PA) in 43°39'·14N 13°24'·95E (ILNW 401/22)

33 Portorose

Insert Lt FI.Y.4s4M in 42°40'·2N 14°01'·4E. Delete Lt 2F.R(vert)4M close NW (ILNW 409/22)

34 Marina di Pescara (Plan G)

Reclamation works are in progress to the N of Diga Raffaele Paolucci and to the W of Molo Nord. Restricted areas, no entry, exist around the works in progress. Depths and aids to navigation may not be as charted in this area. Insert Igd *Works in progress* centred on:
42°28'·45N 14°13'·85E
42°28'·24N 14°13'·61E (ILNW 82/23)

35 S. Benedetto del Tronto (Main chart & Plan F)

Main chart
Delete fog signal Horn Mo(W)45s at Lt FI.G&FI.R in 42°57'·19N 13°53'·18E
Plan F
Delete fog signal Horn Mo45s3M at Lt FI.R.3s8m8M in 42°57'·59N 13°53'·67E (ILNW 343/23)

36 Approaches to Ravenna (Main chart & Plan A)

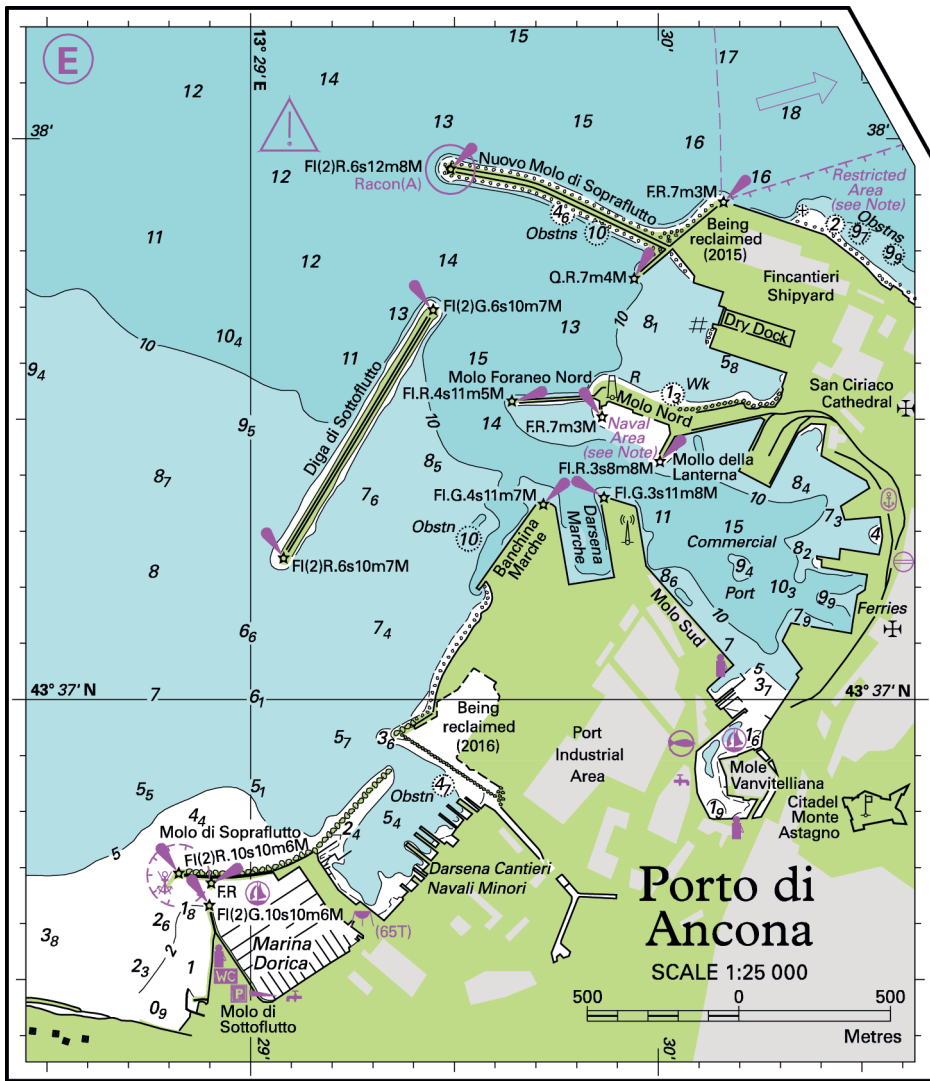
Replace BuY cylindrical emergency Wk marking Lt buoy with a cross topmark Al.Oc.BuY.3s with BRB isolated danger spar Lt buoy FI(2)10s in 44°29'·68N 12°21'·71E (ILNW 394/23)

37 Porto Garibaldi E

The no anchoring and fishing area has reduced in size.
Insert restricted area linework joining 44°37'·91N 12°16'·50E and 44°38'·44N 12°21'·99E. Delete existing, associated restricted area linework to the N (ILNW 122/24)

38 Ravenna SE

Insert pecked line, Spoil Ground, joining:
44°24'·5N 12°31'·9E
44°21'·0N 12°34'·8E
44°19'·5N 12°31'·2E
44°22'·9N 12°28'·3E
Delete charted detail within above area. Add assoc. Igd *Spoil Ground (unsurveyed)* (ILNW 258/24)



Block correction for M33 Plan E
ILNW 595/16