

Imray Correction Notice ICY9-3

11 November 2024

Chart **Y9** WGS 84 Edition 2018

Versions available:

New Edition (corrected to March 2018)

Update (corrected to March 2019)

Update (corrected to March 2020)

Update (corrected to February 2021)

Update (corrected to February 2022)

Update (corrected to February 2023)

Update (corrected to February 2024)

NOTES

Below is a complete list of corrections issued since the 2018 edition of this chart was published.

Each correction is issued with an ILNW reference number and year.

Corrections are listed chronologically in ascending order.

For Update versions of this chart, please check the bottom left corner of the chart to determine the last applied correction.

Any further corrections will be applicable from that point onwards.

1 Race Bank

Delete Y special pillar Lt buoy Fl.Y.5s in 53°12'·95N 0°53'·43E (ILNW 239/18)

2 The Wash

Replace G con Lt buoy **No1** Fl.G.3s with Y con Lt buoy **No1** Fl.Y.3s in 52°56'·00N 0°21'·50E (ILNW 332/18)

3 King's Lynn (Plan B)

Insert G starboard Bn in 52°45'·27N 0°23'·38E (ILNW 345/18)

4 The Wash

Insert BRB isolated danger Lt buoy:

Z9 Fl(2)6s in 52°59'·73N 0°22'·75E

Z6 Fl(2)6s in 52°57'·52N 0°19'·17E (ILNW 665/18)

5 King's Lynn (Plan B)

Delete R port Lt Bn Q.R in 52°45'·32N 0°23'·48E (ILNW 1/19)

6 Old Lynn Road W

Insert YBY W cardinal pillar Lt buoy Q(9)15s (2 buoys) in 52°51'·78N 0°14'·73E (ILNW 21/19)

7 Holbeach Firing Practice Area (correction amended see ILNW 467/19 & 643/19)

Insert:

Y con buoy **DZ No 10** in 52°51'·65N 0°12'·93E

Y special pillar buoy **DZ No 11** in 52°50'·88N 0°12'·63E. Delete Y con Lt buoy **RAF No6** Fl.Y.3s close NW

Amend name of Bn **RAF No1** to **DZ No 1** in 52°53'·75N 0°06'·33E

Replace:

Y Bn **RAF No2** with Y con buoy **DZ No 2** in 52°54'·42N 0°07'·48E

Y Bn **RAF No2A** with Y con buoy **DZ No 3** in 52°54'·75N 0°08'·72E

Y Lt Bn **RAF No3** Fl.Y.5s with Y con buoy **DZ No 4** in 52°55'·00N 0°09'·77E

Y Lt Bn **RAF No4** Fl.Y.10s with Y pillar buoy **DZ No 5** in 52°55'·10N 0°11'·47E

Delete Y Lt Bn **RAF No5** Fl(2)Y.5s in 52°51'·39N 0°13'·00E (ILNW 176/19)

8 Holbeach Firing Practice Area (correction amended see ILNW 643/19)

Amend name of Y con buoy:

RAF No1 to **DZ No 6** in 52°54'·37N 0°12'·89E

RAF No2 to **DZ No 7** in 52°53'·74N 0°13'·32E

Amend name of Y con Lt buoy:

RAF No3 to **DZ No 8** in 52°52'·98N 0°13'·29E (ILNW 271/19)

9 Approaches to River Nene

Delete YBY W card pillar Lt buoy Q(9)14s (2 buoys) in 52°51'·78N 0°14'·72E (ILNW 407/19)

10 Holbeach Firing Practice Area *(correction amended see ILNW 643/19)*

Insert Y con Lt buoy:

DZ No 11 Fl.Y.3s in 52°50'·93N 0°12'·52E. Delete Y special pillar buoy **DZ No 11** close SE.

DZ No 10 Fl(2)Y.5s in 52°51'·39N 0°13'·00E

Amend name of BYB E cardinal Lt Bn **RAF No4** to **DZ No 9** in 52°52'·54N 0°13'·10E

Delete Y con buoy **DZ No 10** in 52°51'·65N 0°12'·93E (ILNW 467/19)

11 Black Buoy Sand

Replace Y special con buoy with Y special spher. Lt buoy Q.Y in:

52°55'·99N 0°06'·63E

52°56'·04N 0°06'·12E (ILNW 623/19)

12 Holbeach Firing Practice Area

Insert Y con buoy:

DZ No 8 in 52°53'·02N 0°13'·31E. Delete Y con Lt buoy **DZ No 8** Fl.Y.5s close SW

DZ No 10 in 52°51'·65N 0°12'·95E

DZ No 11 in 52°50'·89N 0°12'·63E. Delete Y con Lt buoy **DZ No 11** Fl.Y.3s close NW

Delete Y con Lt buoy **DZ No 10** Fl(2)Y.5s in 52°51'·39N 0°13'·00E (ILNW 643/19)

13 Old Lynn Channel

Insert Y special pillar Lt buoy **Z2** Fl(4)Y.10s in 52°54'·05N 0°16'·11E (ILNW 2/20)

14 Approaches to Boston

Amend Lt desc. at G con buoy **No13N** Fl.G.6s to Fl.G.3s in 52°56'·48N 0°06'·71E (ILNW 24/20)

15 The Wash

Delete:

BY N cardinal pillar Lt buoy **Seal Sand Q** in 52°56'·00N 0°20'·00E

YBY W cardinal pillar Lt buoy **Sunk Q(9)15s** in 52°56'·29N 0°23'·40E (ILNW 36/20)

16 The Well

Insert BRB isolated danger Lt buoy Fl(2)10s in 53°01'·53N 0°25'·66E. (ILNW 208/20)

17 Wells-next-the-Sea (Main chart & Plan D)

Move YBY W card Lt buoy Q(9)15s from 52°59'·73N 0°50'·52E to 52°59'·68N 0°50'·24E (ILNW 326/20)

18 Old Lynn Channel

Delete Y special pillar buoy **Z2** Fl(4)Y.10s in 52°54'·05N 0°16'·11E (ILNW 338/20)

19 King's Lynn (Plan B)

Insert minor R Lt 2F.R(vert) in 52°45'·10N 0°23'·58E. This marks the end of the jetty extension (ILNW 567/20)

20 Outer Westmark Knock *(correction amended see ILNW 408/21)*

Move BYB E card Lt buoy **East Knock** from 52°52'·06N 0°14'·66E to 52°52'·14N 0°14'·69E (ILNW 631/20)

21 The Wash

Insert drying height:

-1.1m in 53°01'·20N 0°19'·67E. Delete depth 4.5m close SE

-0.9m in 53°01'·36N 0°20'·68E. Delete depth 8.0m close SE

-3.1m in 53°05'·72N 0°22'·11E

-2.8m in 52°57'·53N 0°26'·03E

Insert depth:

2.3m in 53°00'·32N 0°29'·84E. Delete depth 4.1m close SE

1.1m enclosed by 2m contour in 53°00'·03N 0°29'·95E

0.7m enclosed by 2m contour in 52°59'·92N 0°30'·93E

1.6m enclosed by 2m contour in 52°59'·51N 0°31'·45E. Delete depth 3.2m close NE

0.2m in 52°59'·66N 0°35'·67E. Delete depth 1.4m close E (ILNW 359/21)

22 Outer Westmark Knock *(correction superseded see ILNW 29/22)*

Move:

BYB E card Lt buoy **East Knock** from 52°52'·14N 0°14'·69E to 52°52'·15N 0°12'·10E

YB S card Lt buoy **Lake** from 52°51'·00N 0°13'·52E to 52°51'·00N 0°13'·00E

BYB E card Lt buoy **MAC** from 52°50'·59N 0°12'·47E to 52°50'·65N 0°12'·99E (ILNW 408/21)

23 Outer Westmark Knock

The following buoys locations have been reverted to their original position.

Move:

BYB E card Lt buoy **East Knock** from 52°52'·15N 0°12'·10E to 52°52'·14N 0°14'·69E

YB S card Lt buoy **Lake** from 52°51'·00N 0°13'·00E to 52°51'·00N 0°13'·52E

BYB E card Lt buoy **MAC** from 52°50'·65N 0°12'·99E to 52°50'·59N 0°12'·47E (ILNW 29/22)

24 Approaches to King's Lynn

Replace Y Lt bn **B** Fl.Y.2s3m2M with Y special purpose pillar Lt buoy **B** Fl.Y.2s in 52°49'·09N 0°21'·14E (ILNW 137/22)

25 Bull Dog Channel

Insert accompanying block correction centred on 52°53'·49N 0°22'·57E (ILNW 175/22)

26 The Wash

Delete BRB isolated danger buoy **Z6** Fl(2)6s in 52°57'·52N 0°19'·16E (ILNW 244/22)

27 Approaches to Tabs Head

Extend 0m contour NE of R can Lt buoy **Black Buoy** to 52°57'·06N 0°08'·00E

Amend RW Lt bn **Tabs Head** from Q.WG.4m to Q.4m in 52°56'·01N 0°04'·92E. Delete assoc WG Lt sector (ILNW 28/23)

28 The Well

Amend fog signal, Whistle, to Bell at RW safewater Lt buoy **North Well** LFl.10s in 53°03'·02N 0°27'·90E (ILNW 185/23)

29 Inner Dowsing Wind Farm

Delete Y spherical Lt buoy Fl(5)Y.20s in 53°11'·78N 0°26'·78E (ILNW 306/23)

30 Skegness E

Delete BYB E cardinal pillar Lt buoy **Lincs WFE** Q(3)10s in 53°07'·61N 0°31'·06E (ILNW 28/24)

31 Approaches to Kings Lynn

Replace Y special purpose pillar Lt buoy with a Y Lt bn with triangular topmark in 52°49'·09N 0°21'·14E. The lgd **B** Fl.Y.2s remains unchanged (ILNW 46/24)

32 Holbeach Firing Practice Area

The Y con buoy **DZ No3** is now lit. Add light flash and legend Fl(2)5s in 52°54'·75N 0°08'·72E (ILNW 102/24)

33 The Wash

Delete Y special purpose spher Lt buoy Fl(5)Y.20s in 52°56'·50N 0°19'·10E (ILNW 126/24)

34 Approaches to Boston

There is less water than charted in the approaches to Boston.

Insert drying height -0.2m in 52°56'·63N 0°07'·37E

Insert label *Less water* centred on 52°57'·19N 0°08'·16E (ILNW 253/24)

35 Docking Shoal

Insert depth 4.7m in 53°10'·47N 0°48'·32E. Delete depth 5.8m close SE. (ILNW 290/24)

36 South Sunk Sand NE & Outer Ferrier Sand SW

Insert drying height:

-0.4m in 52°57'·26N 0°28'·30E. Extend approx. 0m contour NW to enclose.

-1.8m in 52°54'·54N 0°25'·19E. Extend approx. 0m contour NW to enclose (ILNW 455/24)

37 Docking Shoal & Race Bank

Insert depth:

4.9m in 53°12'·43N 0°43'·16E and delete depth 5.6m close NE

5.7m in 53°12'·10N 0°44'·12E

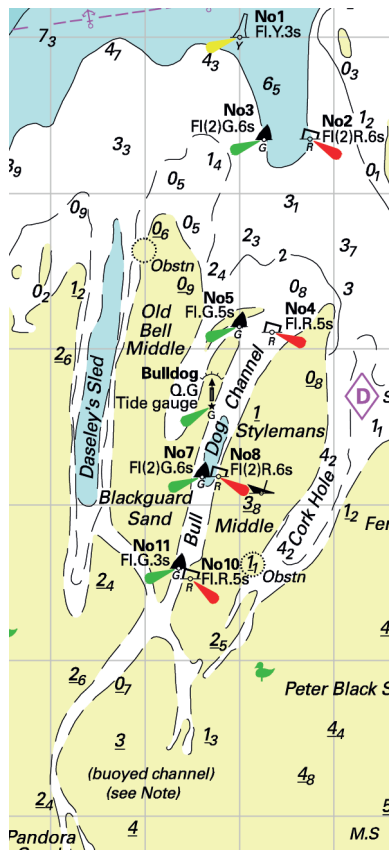
8.3m in 53°12'·05N 0°45'·52E and extend 10m contour E to enclose

1.9m enclosed by 2m contour in 53°11'·31N 0°53'·41E

2m enclosed by 2m contour in 53°10'·63N 0°54'·08E and delete depth 2.5m close SW (ILNW 539/24)

38 Approaches to Lynn Cut

Insert Y pillar Lt buoy **B** Fl.Y.2s with x topmk in 52°49'·08N 0°21'·13E. Delete Y Lt bn **B** Fl.Y.2s close NE. (ILNW 565/24)



Block correction for Y9
 ILNW 175/22