

Imray Correction Notice ICM16-3

31 October 2024

Chart M16 WGS 84

Edition 2016

Versions available:

New Edition (corrected to July 2016)

Update (corrected to May 2018)

Update (corrected to May 2019)

Update (corrected to April 2020)

Update (corrected to April 2021)

Update (corrected to April 2022)

Update (corrected to April 2023)

Update (corrected to March 2024)

NOTES

Below is a complete list of corrections issued since the 2016 edition of this chart was published.

Each correction is issued with an ILNW reference number and year.

Corrections are listed chronologically in ascending order.

For Update versions of this chart, please check the bottom left corner of the chart to determine the last applied correction.

Any further corrections will be applicable from that point onwards.

1 **La Spezia (Plan D)**

Insert note:

PORT DEVELOPMENT

The local port authority should be consulted for the latest information on depths, aids to navigation and other developments. (ILNW 422/16)

2 **Golfo Marconi (Plan C)**

Insert accompanying block correction centred on 44°18'·38N 9°13'·86E (ILNW 472/16)

3 **Corsica Channel TSS**

A new traffic separation scheme (TSS) is to be implemented on 1st December 2016 in the Corsica Channel between Cap Corse and Isola Capraia.

Charts will be updated when the TSS is implemented. (ILNW 487/16)

4 **La Spezia (Plan D)**

Insert:

Y spar Lt buoy with x topmark Fl.Y.2s in 44°06'·22N 9°50'·19E

R Lt Bn with square topmark Fl(2)R.6s5m4M in 44°05'·97N 9°50'·13E

Lt F.G in 44°05'·39N 9°52'·11E

Delete R Lt Bn Fl(2)R.6s in 44°06'·10N 9°50'·12E (ILNW 560/16)

5 **In the Corsica Channel Traffic Separation Scheme**

A Traffic Separation Scheme (TSS) was implemented in the Corsican Channel on 1st December 2016.

Insert accompanying block correction centred on 43°01'·18N 9°32'·53E (ILNW 569/16)

6 **Livorno W**

Insert Y spher. Lt buoy ODAS Fl(5)Y.20s in 43°37'·00N 10°00'·00E (ILNW 425/17)

7 **Foce del Calambrone (Plan F)**

New breakwaters have been constructed at the Foce del Calambrone between the shore and the points marked by Lts listed below.

Insert Lt:

Oc.R.3s5M in 43°34'·88N 10°17'·55E

Oc.G.3s5M in 43°34'·72N 10°17'·62E (ILNW 50/18)

8 Approaches to La Spezia (Plan D)

Insert Lt Fl.Y.3s3m4M in:

44°03'·72N 9°51'·15E

44°03'·99N 9°51'·06E

Replace R port Lt Bn Fl.R.3s5m5M with R port can Lt buoy Fl.R.3s in 44°05'·12N 9°50'·72E (ILNW 123/18)

9 Golfo Marconi (Plan C)

Insert R spar Lt buoy Fl.R.3s in 44°18'·83N 9°18'·91E (ILNW 451/18)

10 La Spezia S

Insert dangerous Wk sym. in:

44°00'·7N 9°51'·9E

44°02'·0N 9°56'·0E (ILNW 571/18)

11 Approaches to Genova (Plan B)

Move Lt Fl.G.4s in 44°23'·60N 8°56'·10E to 44°23'·54N 8°56'·34E plus add range 8M (ILNW 685/18)

12 Approaches to Genova (Plan B)

Insert dangerous wreck sym. in 44°25'·0N 8°46'·6E (ILNW 117/19)

13 Golfo Marconi (Plan C)

Works are now complete at Marina Chiavari.

Replace pecked line with pontoon between 44°18'·74N 9°19'·20E and 44°18'·77N 9°19'·08E.

Delete assoc. arrow and label *Being reclaimed (2014)* centred on 44°18'·90N 9°19'·50E. (ILNW 150/19)

14 Nice

Amend Lt Fl.R.5s21m20M to Fl.R.4s21m8M in 43°41'·4N 7°17'·2E (ILNW 266/19)

15 Marina di Pisa

Amend Lt Fl.G.3s8m8M to Fl.R.&G.3s8m8M in 43°40'·60N 10°16'·11E (ILNW 415/19)

16 Approaches to La Spezia (Plan D)

Delete Lt:

F.RG(vert)8m3M in 44°06'·14N 9°51'·38E

minor G in 44°05'·72N 9°51'·81E

minor R in 44°05'·69N 9°51'·81E (ILNW 618/19)

17 Approaches to La Spezia (Plan D)

Insert Lt Fl.G.4s8m8M in 44°06'·26N 9°50'·29E

Delete Lt:

2F.R(vert) in 44°06'·53N 9°51'·15E

2F.G(vert) in 44°06'·49N 9°51'·20E (ILNW 167/20)

18 Ventimiglia

Insert Lt Fl.R.&G.3s5M in 43°47'·24N 7°35'·80E. Add assoc. marina symbol. (ILNW 212/20)

19 Approaches to La Spezia (Plan D)

Rotate the direction of traffic arrow 180degrees in:

44°03'·41N 9°51'·73E

44°03'·38N 9°51'·65E (ILNW 454/20)

20 La Spezia S

Delete fish haven symbol in 44°01'·73N 9°49'·17E (ILNW 563/21)

21 Chiavari (Plan C)

Insert Lt:

F.G.6m5M in 44°18'·77N 9°19'·03E

Fl.R.3s8m8M in 44°18'·73N 9°19'·02E (ILNW 652/21)

22 Approaches to Rapallo (Plan C)

Insert:

R spar Lt buoy Fl.R.3s with square topmark in 44°20'·59N 9°14'·13E

G spar Lt buoy Fl.G.3s with triangular topmark in 44°20'·65N 9°14'·19E (ILNW 56/22)

23 Corse, Îles Finocchiarola

A marine reserve has been established around the Îles Finocchiarola in the vicinity of 42°59'·05N 9°27'·90E. Insert assoc. lgd *Marine Reserve* (ILNW 106/22)

24 Chiavari (Plan C)

Amend range of Lt Fl.G.3s8m5M to 8M in 44°18'·76N 9°18'·91E (ILNW 320/22)

25 Villa Luxardo (Plan C)

Insert Lt Fl.R.4s8M in 44°19'·93N 9°13'·10E. This Lt marks the end of the breakwater extension (ILNW 79/23)

26 Chiavari

Amend range of Lt Fl.G.3s8m5M to 8M in 44°18'·76N 9°18'·91E (ILNW 86/23)

27 La Spezia (Plan D)

Replace G Lt bn with starboard pillar Lt buoy Fl.G.3s in 44°05'·92N 9°50'·70E (ILNW 93/23)

28 Vado Ligure

Insert Lt Fl.R.4s8M at the end of outer breakwater in 44°16'·05N 8°27'·23E (ILNW 95/23)

29 Porto Comunale, San Remo (Plan A)

Extend pontoon joining:

43°48'·96N 7°46'·96E (existing)

43°48'·95N 7°46'·96E

43°48'·95N 7°47'·03E (ILNW 184/23)

30 Cap Corse N

Insert obstn depth 6m with assoc lgd (*submerged buoy*) in 43°03'·1N 9°19'·4E (ILNW 243/23)

31 Add chart note:

Chart accuracy (Plan A & C)

Due to the nature of the source information, some detail may not be positioned accurately, and uncharted dangers may exist. Exercise caution when navigating along the coast or in the vicinity of dangers, even when using a satellite positioning system. (ILNW 311/23)

32 Portofino E (Plan C)

Replace Y special purpose pillar Lt buoy with a Y special purpose Lt bn in:

44°18'·87N 9°13'·40E

44°17'·80N 9°13'·76E

The light description, racon sym and AIS remain unchanged (ILNW 333/23)

33 Margherita Ligure (Plan C)

Delete R can buoy Fl.R.4s3M in 44°19'·95N 9°13'·12E (ILNW 346/23)

34 Î. de la Giraglia, Corse N

Amend range of Lt from Fl.5s85m28M to 15M in 43°01'·68N 9°24'·38E (ILNW 123/24)

35 Golfo Marconi (Main chart & Plan C)

Main chart

Amend Lt Fl.3s9M to Fl.R.3s3M in 44°20'·61N 9°14'·15E

Plan C

Insert Lt Fl.G.3s9m3M in 44°20'·69N 9°14'·21E

Amend Lt:

2F.R(vert) to F.R.7m3M in 44°20'·69N 9°14'·01E

Fl.RG.6m3M to Fl.Y.4s6m3M in 44°20'·69N 9°13'·92E

2F.G(vert) to Fl.Y.4s6m3M in 44°20'·76N 9°13'·88E

Fl.3s9m9M to Fl.R.3s9m3M in Fl.Y.4s6m3M in 44°20'·59N 9°14'·09E (ILNW 364/24)

36 Capo Mele N

Amend Lt to Fl.Y.3M in 43°58'·78N 8°09'·63E (ILNW 384/24)

37 Approaches to Genova (Plan B)

Insert limit of restricted area, entry prohibited, joining:

44°24'·79N 8°47'·31E

44°24'·81N 8°47'·32E

44°24'·76N 8°47'·69E

44°25'·16N 8°48'·17E

44°25'·14N 8°48'·21E

(ILNW 390/24)

38 Approaches to Genova (Plan B)

Insert dangerous wreck sym. in:

44°23'·11N 8°55'·61E. Add lgd *Wks*

44°23'·78N 8°52'·12E (ILNW 413/24)

39 Approaches to Genova (Plan B)

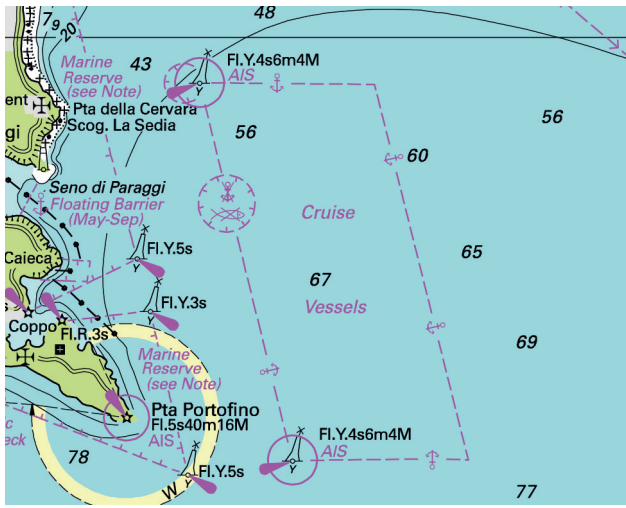
Insert dangerous wreck sym in 44°24'·02N 8°53'·26E (ILNW 416/24)

40 Viareggio (Plan E)

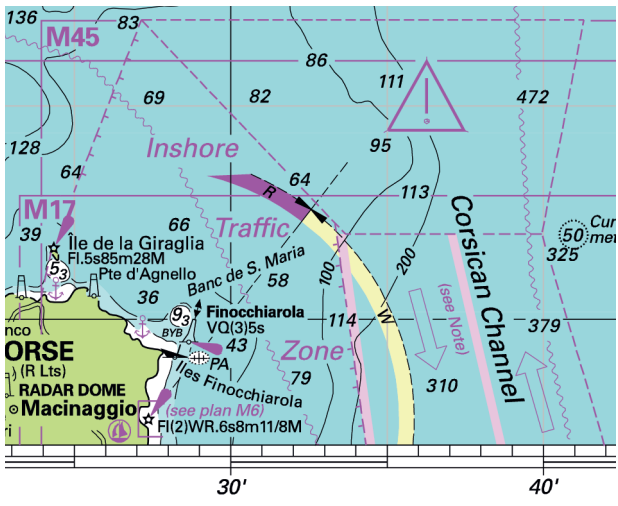
Insert depth 1.6m in 43°51'·85N 10°14'·29E. Delete depth 2.5m close N (ILNW 530/24)

41 Viareggio NW

Insert depth 5.3m in 43°52'·46N 10°13'·57E. Delete depth 7.5m close N (ILNW 531/24)



Block correction for M16 (Plan C)
 ILNW 472/16



Block correction for M16
 ILNW 569/16