

# Imray Correction Notice

ICB31-1

18 February 2020

## Chart B31 WGS 84 Edition 2015

### Versions available:

New Edition (corrected to October 2015)

Update (corrected to February 2020)

### NOTES

Below is a complete list of corrections issued since the 2015 edition of this chart was published.

Each correction is issued with an ILNW reference number and year.

Corrections are listed chronologically in ascending order.

For Update versions of this chart, please check the bottom left corner of the chart to determine the last applied correction.

Any further corrections will be applicable from that point onwards.

#### 1 Canouan, L'Ance Guyac

Anchoring, wind surfing and kite surfing are forbidden by St Vincent Harbour Authority in L'Ance Guyac (West Coast) (ILNW 90/16)

#### 2 Canouan, Grand Cols Reef

A marine conservation area has been established on the east coast of Canouan.

Insert restricted area joining:

12°43'·10N 61°18'·65W

12°41'·60N 61°18'·65W

12°41'·60N 61°19'·80W

12°41'·67N 61°19'·80W

Add assoc. note:

Anchoring, windsurfing and kite surfing are forbidden by the St Vincent Harbour Authority. (ILNW 103/16)

#### 3 Carriacou, Tyrrel Bay (Plan F)

Insert drying Wk sym. in 12°27'·01N 61°29'·64W (ILNW 146/17)

#### 4 Bonaparte Rocks S

Insert depth 5·2m enclosed by dangerline and assoc. lgd *R* in 12°23'·42N 61°29'·40W (ILNW 147/17)

#### 5 Bonaparte Rocks W

Insert rock awash sym. in 12°23'·71N 61°29'·75W (ILNW 216/17)

#### 6 Glossy Bay Marina (Plan A)

Glossy Bay Marina is now open for visiting yachts.

Insert accompanying block correction centred on 12°42'·16N 61°20'·97W (ILNW 343/17)

#### 7 Mustique to Large Island (Main chart & Plan C)

Insert depth:

3·3m in 12°54'·40N 61°10'·99W. Delete depth 4·8m close E (main chart)

4·7m in 12°50'·41N 61°12'·10W. Delete depth 9·1m close W (main chart)

5m in 12°36'·05N 61°23'·61W (main chart & plan C)

5m in 12°35'·50N 61°24'·11W (main chart & plan C)

1·9m in 12°35'·00N 61°24'·19W (plan C)

0·1m in 12°34'·89N 61°24'·05W (main chart & plan C)

0·5m in 12°31'·34N 61°22'·51W. Delete depth 2·1m close W (main chart)

Insert Wk depth 4·8m in 12°31'·73N 61°23'·32W. Delete dangerous wk sym. & assoc. lgd *Rep* close N (main chart)

Replace depth 5·5m with depth 1·9m in 12°24'·19N 61°29'·89W (main chart)

Yachtsmen are advised to navigate with caution in the area. (ILNW 526/17)

#### 8 AIDS TO NAVIGATION

Charted aids to navigation throughout the Eastern Caribbean should be used with caution. Many aids to navigation either moved or were destroyed during recent hurricanes in this region. The replacements and repositioning of these aids is progressing slowly. Yachtsmen are advised to use visual navigation. (Street 2018) (ILNW 574/18)

#### 9 Carriacou, Tyrrel Bay (Plan F) (correction superseded see ILNW 66/20)

Works at Tyrrel Bay marina & container port are now complete. Insert jetty joining:

12°27'·68N 61°29'·08W (quay)

12°27'·68N 61°29'·17W

12°27'·74N 61°29'·17W

Replace *Works in progress* (2015) with marina sym. in 12°27'·71N 61°29'·01W (Street 2019) (ILNW 528/19)

#### 10 Mayreau (Main chart & Plan B)

Insert conspic. Radio Tower sym. in 12°38'·43N 61°23'·62W (ILNW 64/20)

#### 11 Union Island (Main chart & Plan C)

Insert RW radio tower sym. & assoc. lgd **2 RO TRS** in 12°35'·95N 61°25'·60W

Delete RW lit radio mast sym. in 12°35'·83N 61°25'·98W.

The conspic. radio towers on Union Island are located approx. 725m NE from previous. Yachtsmen should no longer use the existing transit/range lines emanating from Union Island. (Street 2020) (ILNW 65/20)

**12 Carriacou, Tyrrel Bay (Plan F)**

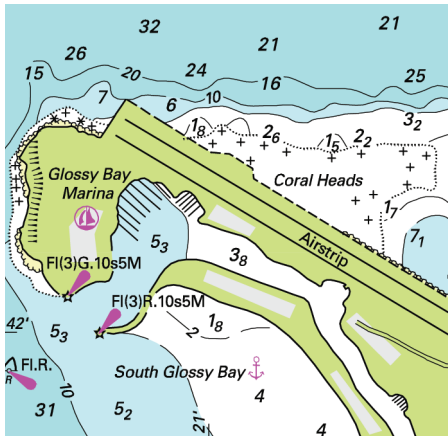
Insert accompanying block correction centred on 12°27'·49N 61°29'·13W (Street 2020) (ILNW 66/20)

**13 Carriacou, Hillsborough Bay (Main chart & Plan D)**

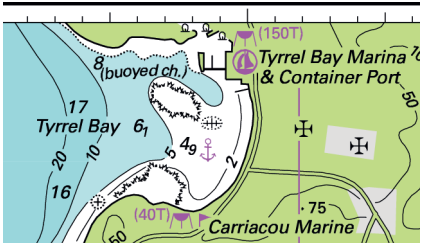
Replace Bn (ru) with R con Lt buoy Q.R in 12°29'·18N 61°28'·69W (ILNW 74/20)

**14 Union Island**

Delete F Lt in 12°36'·04N 61°25'·17W (ILNW 75/20)



Block correction B31 (Plan A)  
ILNW 343/17



Block correction for B31 (Plan F)  
ILNW 66/20