

Imray Correction Notice ICA30-2

25 July 2024

Chart **A30** WGS 84

Edition 2018

Versions available:

New Edition (corrected to March 2018)

Update (corrected to March 2019)

Update (corrected to October 2020)

Update (corrected to October 2021)

Update (corrected to October 2022)

Update (corrected to October 2023)

Update (corrected to July 2024)

NOTES

Below is a complete list of corrections issued since the 2018 edition of this chart was published.

Each correction is issued with an ILNW reference number and year.

Corrections are listed chronologically in ascending order.

For Update versions of this chart, please check the bottom left corner of the chart to determine the last applied correction.

Any further corrections will be applicable from that point onwards.

1 **Cul-de-Sac Marin (Plan D)**

Insert accompanying block correction centred on 14°27'·99N 60°52'·41W (Doyle/Street 9/2018) (ILNW 452/18)

2 **AIDS TO NAVIGATION**

Charted aids to navigation throughout the Eastern Caribbean should be used with caution. Many aids to navigation either moved or were destroyed during recent hurricanes in this region. The replacements and repositioning of these aids is progressing slowly. Yachtsmen are advised to use visual navigation. (Street 2018) (ILNW 574/18)

3 **Mouillage des Trois Ilets (Plan C)**

Insert dangerous wk sym in 14°32'·70N 61°02'·50W (ILNW 271/20)

4 **Rade de Fort de France (Plan B)**

Delete drying Wk sym in 14°35'·65N 61°03'·59W (ILNW 191/21)

5 **Petite Anse d'Arlets & Pte les Fous**

Insert outfall pipeline joining:

14°29'·48N 61°04'·91W

14°29'·20N 61°05'·21W

and

14°27'·87N 60°56'·18W

14°27'·29N 60°56'·46W (ILNW 422/21)

6 **Approches to Havre du Robert (Main chart & Plan F) (correction amended see ILNW 322/23)**

Replace depth 0.2m with drying height -0.3m in 14°39'·84N 60°50'·64W

Amend:

R1 Lt buoy to Fl.R.2.5s (*exting*) in 14°41'·01N 60°52'·51W

R2 Lt buoy to Fl.G.2.5s (*exting*) in 14°40'·63N 60°52'·65W

PL Lt buoy to VQ(3)5s (*exting*) in 14°40'·48N 60°55'·72W (Plan F only)

GL Lt buoy to Q(3)10s (*exting*) in 14°40'·09N 60°55'·59W (Plan F only) (ILNW 550/21)

7 **Anse à l'Âne, Les Anses d'Arlets & Pte les Fous (Main chart & Plan C)**

Delete:

Y special purpose spar buoy in 14°33'·00N 61°04'·16W (Main chart & Plan C)

Y special purpose spher Lt buoy Fl.Y.2·5s in 14°29'·24N 61°05'·17W (Main chart)

Y special purpose spar buoy in 14°27'·27N 60°56'·43W (Main chart) (ILNW 653/21)

8 Rade de Fort de France (Plan B) (*correction superseded see ILNW 378/22*)

Works on mooring dolphin construction are underway S of the container terminal. Entry is prohibited in the works area, marked by buoys, Insert lgd *Works in progress (2021)* centred on 14°35'·38N 61°02'·98W (ILNW 666/21)

9 Cul-de-Sac du Marin (Plan D)

Move G can buoy from 14°27'·99N 60°52'·58W to 14°27'·85N 60°52'·58W

Delete GRG con buoy in 14°27'·96N 60°52'·50W

Insert GRG preferred channel to starboard can Lt buoy Fl(2+1)G.6s in 14°27'·84N 60°52'·49W (ILNW 51/22)

10 NW Martinique

A marine reserve has been established from the shore to approx. 500m seaward between Pte la Mare (14°46'·93N 61°12'·82W) and Cap Saint Martin (14°51'·72N 61°12'·25W) (ILNW 252/22)

11 Banc du Fort Saint Louis (Plan B)

Replace depth:

3·1m with 2·3m in 14°35'·76N 61°04'·08W

4·4m with 3·6m in 14°35'·62N 61°04'·27W (ILNW 290/22)

12 Rade de Fort de France (Plan B)

Insert lgd *Moorings* centred on 14°35'·57N 61°02'·59W

Insert dolphin sym. in 14°35'·38N 61°02'·98W. The dolphin is attached to the quay in 14°35'·40N 61°02'·99W. Delete lgd *Works in progress (2021)* centred on 14°35'·38N 61°02'·98W

Land has been reclaimed to extend the container terminal. Insert quay, line, joining:

14°35'·42N 61°02'·84W (existing quay)

14°35'·45N 61°02'·76W

14°35'·63N 61°02'·80W (existing quay)

Delete depths:

2·0m in 14°35'·47N 61°02'·75W

3·1m in 14°35'·52N 61°02'·80W

1·4m in 14°35'·59N 61°02'·78W

3·0m in 14°35'·64N 61°02'·70W (ILNW 378/22)

13 St Pierre (Plan A)

The buoys marking the regulated zone are now lit. Add Lt Fl.Y.4s at Y special can buoy in:

14°44'·64N 61°10'·69W

14°44'·36N 61°10'·95W

14°44'·20N 61°10'·75W (ILNW 379/22)

14 Cul-de-Sac Marin (Plan D)

Amend Lt desc. at Lt buoy:

MA6 Fl(2)G.6s to Fl(4)G.15s in 14°27'·67N 60°52'·58W

MA5 Fl(2)R.6s to Fl(4)R.15s in 14°27'·73N 60°52'·47W

MA7 Fl.R to Q.R in 14°27'·83N 60°52'·39W

Delete R con buoy in 14°27'·84N 60°52'·29W

The R con buoys in the approach to Marin Yacht Harbour are now lit. Add Lt desc.:

Fl.R.2·5s at R con buoy in 14°27'·98N 60°52'·15W

Fl(2)R.6s at R con buoy in 14°28'·03N 60°52'·08W (ILNW 380/22)

15 Havre du Robert (Main chart & Plan F)

Insert dangerous wk sym in 14°39'·97N 60°55'·35W (ILNW 145/23)

16 Cul-de-Sac Marin (Plan D)

Insert drying Wk sym. & assoc lgd PA in 14°27'·95N 60°52'·73W

Insert dangerous Wk sym. & asoc. lgd:

Masts PA in 14°27'·95N 60°52'·48W

Masts in 14°27'·59N 60°52'·34W (ILNW 248/23)

17 Cul-de-Sac Marin (Main chart & Plan D)

Amend range of Lt DirQ.WRG.9-6M to 6M in 14°27'·06N 60°53'·03W (ILNW 250/23)

18 St Pierre (Plan A)

Insert Lt Fl.Y.4s in 14°44'·50N 61°10'·63W (ILNW 252/23)

19 Havre du Robert (Main chart & Plan F)

Remove the lgd (*exting*) from Lt buoy:

R1 in 14°41'·02N 60°52'·51W

R2 in 14°40'·61N 60°52'·63W

PL in 14°40'·46N 60°55'·72W (Plan F only)

GL in 14°40'·11N 60°55'·58W (Plan F only) (ILNW 322/23)

20 Cul-de-Sac Marin (Plan D)

Move **MA5** R con Lt buoy from 14°27'·73N 60°52'·48W to 14°27'·55N 60°52'·61W

Insert R con Lt buoy **MA7** VQ.R in 14°27'·68N 60°52'·46W

Amend:

MA6 Lt buoy to VQ.G in 14°27'·66N 60°52'·59W

Designation of **MA7** Lt buoy to **MA9** in 14°27'·83N 60°52'·39W (ILNW 93/24)

21 Cul-de-Sac Marin (Plan D)

Insert restricted area, no anchoring, line joining:

14°28'·05N 60°52'·69W (coast)

14°27'·98N 60°52'·61W

14°27'·58N 60°53'·08W (Îlet Duquesnay)

and

14°27'·53N 60°53'·13W (Îlet Duquesnay)

14°27'·17N 60°53'·56W (Pte Petite Poterie)

Mooring is now prohibited in this area.

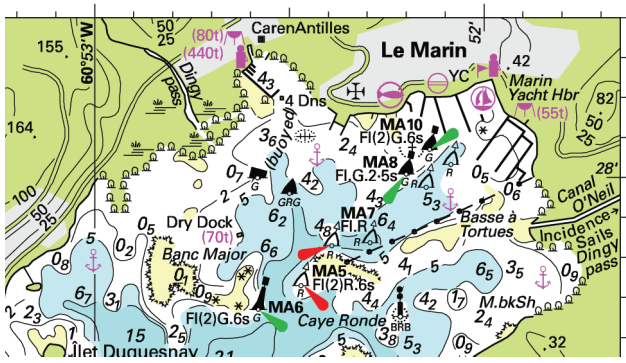
Delete anchorage sym. in:

14°27'·42N 60°53'·29W

14°27'·79N 60°53'·00W (ILNW 238/24)

22 Le Vauclin

Amend Lt desc. Dir.WRG.14m11/9M to Dir.WRG.14m7M in 14°33'·10N 60°50'·51W (ILNW 239/24)



Block correction for A30 (Plan D)
ILNW 452/18