

Norie's Bulletin of Corrections

No.1 from 1st January to 31st March 2018

The following new editions of charts have been published since Norie's Bulletin No.4 to 31st December 2017 was issued. These supersede previous editions for which corrections will no longer be available. New editions often contain extensive new hydrographic information or are new drawings.

NEW EDITIONS OF EXISTING CHARTS		<i>Scale</i>	<i>Edition date</i>	<i>Year of edition replaced</i>
C1	Thames Estuary	1:120 000	Jan-18	2016
C10	Western English Channel	1:400 000	Feb-18	2014
C12	Eastern English Channel	1:300 000	Feb-18	2014
Y9	The Wash	1:90 000	Mar-18	2014
2000 Atlas	Suffolk and Essex Coasts	various	Mar-18	2015
2100 Atlas	Kent and Sussex Coasts	various	Feb-18	2015
2120 Atlas	North Sea – Nieuwpoort to Den Helder	various	Feb-18	2017
2130 Atlas	Westerschelde and Oosterschelde	various	Mar-18	2017
2150 Atlas	Waddenzee – Den Helder to Norderney	various	Mar-18	2017
2160 Atlas	IJsselmeer	various	Mar-18	2017
G33	Southern Cyclades	1:190 000	Feb-18	2014
A30	Martinique	1:95 000	Mar-18	2012
B5	Martinique to Grenada, Tobago and Barbados	1:500 000	Feb-18	2006

FIRST EDITION CHARTS		<i>Scale</i>	<i>Edition date</i>
2140 Atlas	Rijn and Maas Delta	various	Feb-18
Y2	Rivers Ore and Alde	1:35 000	Mar-18
Y6	Suffolk and Essex Coasts	1:120 000	Mar-18
Y7	Thames Estuary South	1:120 000	Feb-18
Y12	Rivers Stour and Orwell	1:35 000	Mar-18
Y14	The Swale	1:40 000	Feb-18

World Geodetic System 1984 (WGS 84)

Most Imray charts are based on WGS 84 datum. Each chart listed in this bulletin includes details of the datum on which it is based. Positions referred to in corrections will also refer to the specific datum of the chart and no offset is needed.

The corrections listed in this bulletin can also be viewed and downloaded from our website www.imray.com

Bearings are true and from seaward.

Imray Laurie Norie & Wilson Ltd

Wych House The Broadway
St Ives Cambridgeshire PE27 5BT
+44 (0)1480 462114

This bulletin contains corrections for the following charts:

C1 (Ed 1/2018)	C64 (Ed 4/2016)	2150 (Ed 2/2017)	M18 (Ed 3/2010)
C2 (Ed 7/2016)	C66 (Ed 4/2016)	2150 (Ed 3/2018)	M19 (Ed 11/2010)
C3 (Ed 4/2016)	C67 (Ed 11/2017)	2200+5 (Ed 3/2016)	M22 (Ed 1/2011)
C4 (Ed 6/2017)	C68 (Ed 7/2017)	2200+6 (Ed 3/2016)	M23 (Ed 11/2014)
C6 (Ed 8/2015)	C69 (Ed 6/2013)	2200+7 (Ed 3/2016)	M24 (Ed 12/2014)
C7 (Ed 7/2017)	C70 (Ed 4/2016)	2200+8 (Ed 3/2016)	M25 (Ed 6/2017)
C8 (Ed 9/2017)	Y9 (Ed 11/2014)	2200+9 (Ed 3/2016)	M26 (Ed 6/2017)
C9 (Ed 9/2016)	Y16 (Ed 6/2017)	2300+2 (Ed 12/2015)	M29 (Ed 7/2015)
C10 (Ed 6/2014)	Y17 (Ed 11/2017)	2300+3 (Ed 12/2015)	M40 (Ed 6/2014)
C10 (Ed 2/2018)	Y18 (Ed 4/2016)	2300+5 (Ed 12/2015)	M50 (Ed 6/2017)
C12 (Ed 4/2014)	Y23 (Ed 7/2016)	2400+2 (Ed 10/2015)	G12 (Ed 7/2014)
C12 (Ed 2/2018)	Y26 (Ed 12/2016)	2400+3 (Ed 10/2015)	G121 (Ed 1/2014)
C14 (Ed 10/2017)	Y58 (Ed 7/2016)	2400+8 (Ed 10/2015)	G2 (Ed 8/2013)
C15 (Ed 3/2016)	2000+1 (Ed 1/2015)	2400+9 (Ed 10/2015)	G21 (Ed 2/2012)
C18 (Ed 1/2016)	2000+4 (Ed 1/2015)	2400+12 (Ed 10/2015)	G23 (Ed 5/2012)
C19 (Ed 8/2015)	2000+5 (Ed 1/2015)	2400+13 (Ed 10/2015)	G28 (Ed 11/2013)
C20 (Ed 3/2009)	2000+7 (Ed 1/2015)	2400+14 (Ed 10/2015)	G3 (Ed 8/2014)
C23 (Ed 8/2017)	2000+10 (Ed 1/2015)	2500+1 (Ed 3/2017)	G31 (Ed 3/2014)
C24 (Ed 12/2014)	2100+1 (Ed 1/2015)	2500+2 (Ed 3/2017)	G33 (Ed 5/2014)
C25 (Ed 8/2017)	2100+2 (Ed 1/2015)	2500+4 (Ed 3/2017)	G36 (Ed 5/2015)
C26 (Ed 4/2017)	2100+2 (Ed 2/2018)	2500+5 (Ed 3/2017)	G37 (Ed 9/2017)
C28 (Ed 9/2017)	2100+3 (Ed 1/2015)	2500+7 (Ed 3/2017)	G38 (Ed 4/2015)
C29 (Ed 9/2016)	2100+4 (Ed 1/2015)	2500+8 (Ed 3/2017)	E2 (Ed 6/2014)
C30 (Ed 5/2017)	2100+5 (Ed 1/2015)	2510+3 (Ed 5/2015)	100 (Ed 6/2012)
C31 (Ed 11/2014)	2100+5 (Ed 2/2018)	2510+6 (Ed 5/2015)	CHART 1 (Ed 8/2012)
C32 (Ed 9/2017)	2100+6 (Ed 1/2015)	2600+1 (Ed 12/2016)	A25 (Ed 2/2012)
C33A (Ed 8/2016)	2100+7 (Ed 1/2015)	2600+5 (Ed 12/2016)	A30 (Ed 12/2012)
C33B (Ed 1/2012)	2100+7 (Ed 2/2018)	2600+6 (Ed 12/2016)	B (Ed 9/2016)
C34 (Ed 10/2014)	2100+8 (Ed 1/2015)	2600+8 (Ed 12/2016)	B3 (Ed 12/2015)
C36 (Ed 1/2015)	2100+9 (Ed 1/2015)	2600+11 (Ed 12/2016)	B5 (Ed 9/2006)
C41 (Ed 6/2017)	2100+10 (Ed 1/2015)	2700+1 (Ed 5/2016)	B5 (Ed 2/2018)
C42 (Ed 9/2017)	2110+1 (Ed 1/2017)	2700+2 (Ed 5/2016)	B6 (Ed 5/2009)
C43 (Ed 2/2014)	2110+2 (Ed 1/2017)	2700+11 (Ed 5/2016)	D (Ed 11/2006)
C49 (Ed 6/2015)	2110+3 (Ed 1/2017)	2700+12 (Ed 5/2016)	D1 (Ed 9/2004)
C50 (Ed 3/2017)	2110+8 (Ed 1/2017)	M3 (Ed 6/2014)	D10 (Ed 5/2003)
C52 (Ed 9/2015)	2110+10 (Ed 1/2017)	M8 (Ed 5/2015)	D11 (Ed 7/2001)
C55 (Ed 3/2015)	2110+11 (Ed 1/2017)	M10 (Ed 3/2011)	D14 (Ed 3/2006)
C56 (Ed 6/2017)	2120 (Ed 5/2017)	M12 (Ed 1/2014)	
C57 (Ed 4/2017)	2120 (Ed 2/2018)	M13 (Ed 1/2016)	
C59 (Ed 9/2015)	2130 (Ed 3/2017)	M14 (Ed 4/2017)	
C61 (Ed 3/2016)	2130 (Ed 3/2018)	M15 (Ed 4/2015)	
C62 (Ed 7/2016)	2140 (Ed 2/2018)	M16 (Ed 7/2016)	

C1 (Ed 1/2018) WGS 84

Approaches to River Blackwater

Move G con Lt buoy:

Eagle Q.G in 51°44'·13N 1°03'·83E to 51°44'·11N 1°03'·63E

Bench Head Fl(3)G.10s in 51°44'·69N 1°01'·10E to 51°44'·56N 1°01'·19E

Move R can Lt buoy **NW Knoll** Fl(2)R.5s in 51°44'·35N 1°02'·17E to 51°44'·29N 1°02'·14E (ILNW 64/18)

Kingsnorth Power Station

Delete **CHY** (198) in 51°25'·51N 0°36'·48E (ILNW 162/18)

C2 (Ed 7/2016) WGS 84

Gallions Reach, Ware Point (*correction superseded-see ILNW 94/18*)

Insert dangerous Wk sym. in 51°30'·32N 0°05'·14E and YBY W card pillar Lt buoy Q(9)15s close NW (ILNW 5/18)

Gallions Reach, Ware Point

Delete dangerous Wk sym. in 51°30'·32N 0°05'·14E and YBY W card pillar Lt buoy Q(9)15s close NW (ILNW 94/18)

C3 (Ed 4/2016) WGS 84

Solent Mark Changes 2018

A number of the SCRA racing buoys have been issued new names for 2018. These changes are as follows:

Denisons to "H" in 50°44'·30N 1°28'·16W

Bart's Bash to *1851 Trust* in 50°44'·83N 1°26'·09W

Party to *Cowes Yacht Haven* in 50°45'·68N 1°19'·98W

C J May to *East Bay* in 50°45'·97N 1°19'·45W

Island SC to *Party* in 50°46'·10N 1°18'·43W

Zetman to *Rigit UK Rigging* in 50°49'·21N 1°17'·46W

Jonathan Janson to *Robin Culpan* in 50°48'·46N 1°15'·72W

Southampton Solent University to *Fever-Tree* in 50°46'·43N 1°15'·09W

Kilchoman to *Goodall Roofing* in 50°47'·33N 1°14'·59W

Mackley Van Oord to *Quarr* in 50°45'·03N 1°11'·89W

PSC Parhelion to *PSC Parhelion Racing Series* in 50°46'·82N 1°07'·35W

A-Plan to *Alfie* in 50°47'·08N 1°06'·78W

Insert Y special spher. racing buoy:

Cowes Corinthian in 50°46'·15N 1°17'·20W

Maraval in 50°47'·70N 1°15'·25W

Delete Or spher. buoy *Baxters* in 50°45'·23N 1°20'·69W (ILNW 101/18)

C4 (Ed 6/2017) WGS 84

Portland Harbour (Plan A)

Delete lgd *Works in progress (2017)* centred on 50°34'·39N 2°25'·78W (ILNW 6/18)

Boscombe SE

Add Lt desc. Q(6)+LFI.15s at YB S cardinal pillar buoy in 50°42'·95N 1°50'·38W (ILNW 15/18)

Solent Mark Changes 2018

The following SCRA racing buoy has been issued a new name for 2018:

Denisons is now "H" in 50°44'·30N 1°28'·16W (ILNW 101/18)

C6 (Ed 8/2015) WGS 84

St Austell Bay

Delete building sym. and lgd **BLDG** in 50°20'·26N 4°43'·94W (ILNW 36/18)

Falmouth Bay

Insert circular dangerline and lgd *Obstn* in 50°07'·64N 5°01'·47W (ILNW 83/18)

C7 (Ed 7/2017) WGS 84

Saint Mary's Sound (Plan C)

Replace drying height -0·6m with depth 3·4m in 49°54'·46N 6°20'·01W (ILNW 65/18)

Falmouth Bay

Insert circular dangerline and lgd *Obstn* in 50°07'·64N 5°01'·47W (ILNW 83/18)

C8 (Ed 9/2017) WGS 84

Kellet Gut

Replace Wk depth 3m with drying Wk sym. in 51°14'·92N 1°34'·24E (ILNW 134/18)

C9 (Ed 9/2016) WGS 84

Solent Mark Changes 2018 (Plan A)

A number of the SCRA racing buoys have been issued new names for 2018. These changes are as follows:

PSC Parhelion to *PSC Parhelion Racing Series* in 50°46'·82N 1°07'·35W

A-Plan to *Alfie* in 50°47'·08N 1°06'·78W (ILNW 101/18)

C10 (Ed 6/2014) WGS 84

Notification of new edition

A new February 2018 edition of this chart will shortly be published. In addition to the listed corrections, the chart specification has been improved to show coloured light flashes. There has been general updating throughout. (ILNW 79/18)

C10 (Ed 2/2018) WGS 84

Cap Levi

Insert racon sym. plus assoc. lgd AIS at Lt **Cap Levi** Fl.R.5s36m17M in 49°41'·8N 1°28'·4W (ILNW 154/18)

C12 (Ed 4/2014) WGS 84

Notification of new edition

A new February 2018 edition of this chart will shortly be published. In addition to the listed corrections, the latest depth surveys have been applied. The chart specification has been improved to show coloured light flashes. There has been general updating throughout. (ILNW 45/18)

C12 (Ed 2/2018) WGS 84

Kellet Gut (Plan A)

Replace Wk depth 3m with drying Wk sym. in 51°14'·92N 1°34'·24E (ILNW 134/18)

Cap Levi

Insert racon sym. plus assoc. lgd AIS at **LTHO**. Fl.R.5s36m17M in 49°41'·8N 1°28'·4W (ILNW 154/18)

C14 (Ed 10/2017) WGS 84

Plymouth Sound, Bovisand Pier

The SS(Diving) Bn is no longer lit. Delete Lt desc at Bn 2FG(vert)17m3M in 50°20'·25N 4°07'·72W (ILNW 52/18)

C15 (Ed 3/2016) WGS 84

Beaulieu River (Plan G)

Insert G con Lt buoy:

Fl.G.4s in 50°48'·00N 1°25'·16W

Mulberry Fl.G.4s in 50°47'·66N 1°24'·60W

Fiddlers Fl.G.4s in 50°47'·48N 1°24'·50W

Gins Fl.G.4s in 50°47'·05N 1°24'·56W

Insert R can Lt buoy:

No 28 Fl.R.4s in 50°48'·00N 1°24'·70W

No 26 Fl.R.4s in 50°46'·80N 1°24'·05W

Insert G starboard Lt Bn **No 17** Fl.G.4s in 50°46'·82N 1°23'·35W. Delete G starboard Bn **No 17** close S

Replace G starboard Bn with G starboard Lt Bn **No 13** Fl.G.4s in 50°46'·94N 1°22'·72W (ILNW 28/18)

Solent Mark Changes 2018 (Main chart & Plan H)

A number of the SCRA racing buoys have been issued new names for 2018. These changes are as follows:

Denisons to "H" in 50°44'·30N 1°28'·16W

Bar's Bash to *1851 Trust* in 50°44'·83N 1°26'·09W

Party to *Cowes Yacht Haven* in 50°45'·68N 1°19'·98W

C J May to *East Bay* in 50°45'·97N 1°19'·45W

Island SC to *Party* in 50°46'·10N 1°18'·43W

Zetman to *Rigit UK Rigging* in 50°49'·21N 1°17'·46W

Jonathan Janson to *Robin Culpan* in 50°48'·46N 1°15'·72W

Southampton Solent University to *Fever-Tree* in 50°46'·43N 1°15'·09W

Kilchoman to *Goodall Roofing* in 50°47'·33N 1°14'·59W

Mackley Van Oord to *Quarr* in 50°45'·03N 1°11'·89W

PSC Parhelion to *PSC Parhelion Racing Series* in 50°46'·82N 1°07'·35W

A-Plan to *Alfie* in 50°47'·08N 1°06'·78W

Insert Y special spher. racing buoy:

Cowes Corinthian in 50°46'·15N 1°17'·20W (Main chart & Plan H)

Maraval in 50°47'·70N 1°15'·25W

Delete Or spher. buoy *Baxters* in 50°45'·23N 1°20'·69W

These changes will be included in the forthcoming new edition due to be published Spring 2018 (ILNW 101/18)

C18 (Ed 1/2016) WGS 84

Pointe de Grave to Capbreton

The limits of the firing practice area off Cap Ferret have been amended.

Insert limit of firing practice area joining:

45°33'·7N 1°32'·9W

45°33'·7N 1°11'·0W

45°27'·6N 1°09'·3W

and

43°45'·0N 1°43'·5W

43°39'·5N 1°26'·6W

Delete former limit of firing practice area between 45°33'·7N 1°32'·9W and 43°39'·5N 1°26'·6W (ILNW 29/18)

Santander N

Move Y Lt superbuoy *ODAS Q(5)Y* in 43°53'·5N 3°47'·4W to 43°54'·6N 3°46'·0W (ILNW 59/18)

Roche's Point

Amend range of Lt to 18/12M plus insert racon sym and assoc. lgd AIS in 51°47'·6N 8°15'·1W (ILNW 152/18)

C19 (Ed 8/2015) WGS 84

Cabo de São Vicente

Delete fog signal HornMo(I)30s at Cabo de São Vicente Lt in 37°01'·4N 8°59'·8W (ILNW 24/18)

Portugal, Baleeira

Amend Lt to Fl.R.4s12m6M in 37°00'·7N 8°55'·5W (ILNW 128/18)

Portugal, Ponta de Sagres

Amend duration of Pta de Sagres Lt Iso.R.2s11M to 4s in 36°59'·7N 8°57'·0W (ILNW 129/18)

C20 (Ed 3/2009) WGS 84

Lanzarote, Arrecife

Insert Lt Fl.G.15M in 28°57'·6N 13°31'·8W (ILNW 156/18)

C23 (Ed 8/2017) WGS 84

Burghead Bay

Delete RW safewater spar Lt buoy LFL.10s (*seasonal*) in 57°40'·33N 3°38'·76W (ILNW 105/18)

Helmsdale (Plan B)

Delete:

R can buoy in 58°06'·73N 3°38'·71W

G con buoy in 58°06'·71N 3°38'·61W (ILNW 114/18)

C24 (Ed 12/2014) WGS 84

Hartlepool

Delete **CHY** (73) in 54°42'·50N 1°12'·79W (ILNW 53/18)

C25 (Ed 8/2017) WGS 84

Approaches to Lowestoft

Delete *Wk* depth 5·1m in 52°25'·2N 1°49'·7E (ILNW 2/18)

Lowestoft SE

Construction works are about to commence on the East Anglia ONE Wind Farm.

Insert limit of restricted area joining:

52°19'·3N 2°27'·6E

52°20'·1N 2°34'·8E

52°08'·4N 2°33'·4E

52°09'·4N 2°24'·3E

Insert wind turbine sym centred on 52°14'·3N 2°30'·0E

Add assoc. lgd *East Anglia ONE Wind Farm under const'n (2018) (buoyed)*.

Yachtsmen are advised that a safety zone of 500m becomes operational around the turbines under construction. (ILNW 78/18)

Cromer Knoll SE

Construction work on the Dudgeon Wind Farm is now complete. Delete lgd *under const'n (2016-17) (buoyed)* centred on 53°15'·8N 1°23'·2E (ILNW 106/18)

TSS Off Texel S

Delete racon sym and assoc. lgd Racon(D) at YBY W cardinal pillar Lt buoy VQ(9)10s in 52°45'·9N 4°11'·9E (ILNW 115/18)

Outer Dowsing E

Insert racon sym. plus assoc. lgd AIS at platform **48/17b-GA** in 53°24'·84N 1°16'·33E (ILNW 153/18)

C26 (Ed 4/2017) WGS 84

German Bight Western Approach N (*Correction amended - see ILNW 222/18*)

Work has begun on the construction of the EnBW Hohe See Wind Farm S of Global Tech 1 Wind Farm.

Insert restricted area joining:

54°27'·40N 6°24'·00E

54°22'·86N 6°22'·47E

54°27'·58N 6°15'·05E

54°29'·40N 6°18'·21E

Add associated lgd *EnBW Hohe See Wind Farm under construction (buoyed)*. (ILNW 95/18)

TSS Off Texel S

Delete racon sym and assoc. lgd Racon(D) at YBY W cardinal pillar Lt buoy VQ(9)10s in 52°45'·9N 4°11'·9E (ILNW 115/18)

Brunsbüttel (Plan J)

Insert Y Lt stake Fl(5)Y.20s Tide gauge in 53°53'·27N 9°08'·92E (ILNW 135/18)

Nordsee One Wind Farm

The Nordsee One Wind Farm is now fully commissioned.

Delete lgd *Under const'n (buoyed)* centred on 53°58'·9N 6°49'·6E (ILNW 140/18)

C28 (Ed 9/2017) WGS 84

Approaches to Lowestoft

Delete *Wk (buoyed)* depth 5·1m in 52°25'·23N 1°49'·67E (ILNW 2/18)

River Yare (Plan C)

Insert Lts:

Fl.R.3s in 52°34'·97N 1°43'·80E

Fl.R.2s in 52°34'·80N 1°43'·88E

Fl.G.2s in 52°34'·77N 1°43'·97E (ILNW 133/18)

Wells-next-the-Sea (Plan A)

There has been a change in the navigable channel at the entrance to Wells-next-the-Sea; buoyage has been adjusted accordingly.

Move R can Lt buoy **North Outer** in 52°59'·55N 0°50'·77E to 52°59'·42N 0°50'·50E

Yachtsmen are advised to navigate with caution in the area and contact Wells Harbour

Commissioners for the latest information. (ILNW 163/18)

C29 (Ed 9/2016) WGS 84

Approaches to Lowestoft

Delete *Wk* depth 5·1m in 52°25'·23N 1°49'·67E (ILNW 2/18)

River Humber (Plan E)

Move Lt float **SE Chequer** VQ(6)+LFl.10s6m6M in 53°33'·27N 0°12'·33E to 53°33'·36N 0°12'·86E (ILNW 93/18)

Cromer Knoll SE

Construction work on the Dudgeon Wind Farm is now complete. Delete lgd *under construction (2016-2017) (buoyed)* centred on 53°16'·5N 1°21'·8E (ILNW 106/18)

Outer Dowsing E

Insert racon sym. plus assoc. lgd AIS at platform 48/17b-GA in 53°24'·84N 1°16'·33E (ILNW 153/18)

C30 (Ed 5/2017) WGS 84

Long Sand Head Two-Way Route

The limits of the routing measures have been amended.

Insert limit of routing measure joining:

51°47'·50N 1°35'·64E

51°48'·32N 1°36'·96E

51°48'·12N 1°39'·39E

51°47'·90N 1°39'·42E

Delete former limit of routing measure between:

51°47'·50N 1°35'·64E and 51°47'·90N 1°39'·42E

51°47'·77N 1°38'·16E and 51°48'·22N 1°38'·16E (ILNW 44/18)

Kellet Gut

Replace Wk depth 3m with drying Wk sym. in 51°14'·92N 1°34'·24E (ILNW 134/18)

C31 (Ed 11/2014) WGS 84

Ridens de Dieppe NW

Insert Y special pillar Lt buoy ODAS FI(5)Y.20s in 50°07'·43N 1°00'·85E (ILNW 58/18)

C32 (Ed 9/2017) WGS 84

Baie du Grand Vey (Main chart & Plan J)

Insert Wk depth 1·8m in 49°24'·95N 1°07'·90W (ILNW 122/18)

Cap Lévi

Insert racon sym. plus assoc. lgd AIS at LIGHTHOUSE FI.R.5s36m17M in 49°41'·75N 1°28'·39W (ILNW 154/18)

C33A (Ed 8/2016) WGS 84

Cap de la Hague SW

Insert dangerline joining:

49°42'·89N 2°00'·29W

49°42'·89N 1°59'·97W

49°42'·55N 1°59'·97W

49°42'·55N 2°00'·29W

plus assoc. lgd ODAS. (ILNW 49/18)

Sark, Point Robert (Main chart & Plan E)

Amend fog signal to Horn(1)30s at Lt FI.15s65m20M in 49°26'·19N 2°20'·75W (ILNW 85/18)

Cap Lévi

Insert racon sym. plus assoc. lgd AIS at Lt CAP LÉVI FI.R.5s36m17M in 49°41'·69N 1°28'·39W (ILNW 154/18)

C33B (Ed 1/2012) WGS 84

Binic (Main chart & Plan B)

Amend Lt to FI(4)G.15s12m6M in 48°36'·07N 2°48'·92W (ILNW 155/18)

C34 (Ed 10/2014) WGS 84

Binic (Main chart & Plan P)

Amend Lt to FI(4)G.15s12m6M in 48°36'·07N 2°48'·92W (ILNW 155/18)

C36 (Ed 1/2015) WGS 84

Douarnenez (Main chart & Plan G)

Delete BRB isolated danger Bn in:
48°06'·26N 4°21'·16W (Main chart & Plan G)
48°06'·25N 4°21'·25W (Plan G)
48°06'·26N 4°21'·27W (Plan G) (ILNW 88/18)

Banc du Bindy

Insert lgd *Explosives Dumping Ground* centred on 48°18'·88N 4°21'·40W (ILNW 89/18)

C41 (Ed 6/2017) WGS 84

Ile d'Oléron E

Depths less than charted exist between Le Boyard and La Charente. The most significant are as follows:

Insert drying height:

-0·1m in 45°59'·78N 1°12'·67W

-0·4m in 45°59'·56N 1°13'·04W

Insert depth:

4·8m in 45°58'·84N 1°11'·71W

0·9m in 45°58'·79N 1°07'·06W

Replace depth 1·8m with depth 1·1m in 45°59'·27N 1°12'·14W

Yachtsmen are advised to exercise caution in the area. (ILNW 7/18)

La Dordogne (Cover inset plan)

A new pier has been established in La Dordogne. Insert Lt Fl.R.4s in 45°02'·22N 0°33'·43W (ILNW 118/18)

C42 (Ed 9/2017) WGS 84

Canal de Colindres (Plan H)

Insert R port can Lt buoy:

Fl.R.4s in 43°26'·17N 3°27'·24W. Delete Y con Lt buoy **No.1** Fl.Y.2s close S

Fl(2)R.7s in 43°25'·88N 3°27'·37W. Delete Y con Lt buoy **No.3** Fl.Y.2s close S

Delete Y con Lt buoy:

No.2 Fl.Y.2s in 43°26'·00N 3°27'·36W

No.4 Fl.Y.2s in 43°25'·74N 3°27'·36W (ILNW 87/18)

La Dordogne (Cover inset plan)

A new pier has been established in La Dordogne. Insert Lt Fl.R.4s in 45°02'·22N 0°33'·43W (ILNW 118/18)

Pointe d'Arcachon S

Delete YBY pillar buoy in 44°29'·77N 1°16'·13W (ILNW 136/18)

C43 (Ed 2/2014) WGS 84

Santander N

Move Y Lt superbuoy ODAS Q(5)Y.20s in 43°53'·5N 3°47'·4W to 43°54'·6N 3°46'·0W (ILNW 59/18)

C49 (Ed 6/2015) WGS 84

Peniche (Plan C)

Insert a lifting bridge between points 39°21'·28N, 9°22'·66W and 39°21'·27N, 9°22'·67W (ILNW 142/18)

C50 (Ed 3/2017) WGS 84

Cabo de São Vicente

Delete fog signal HornMo(I)30s at Cabo de São Vicente Lt in 37°01'·4N 8°59'·8W (ILNW 24/18)

Sancti Petri (Plan M)

Delete Lt:

Oc(2)6s21m6M in 36°23'·67N 6°12'·98W

Fl.5s11m6M in 36°23'·63N 6°12'·97W

Delete assoc. ldg line and lgd 346° extending in direction 166°

Delete ldg line and lgd 011° between 36°23'·78N 6°12'·58W and 36°22'·96N 6°12'·77W (ILNW 126/18)

Tarifa (Plan O)

Delete:

Y ODAS Lt buoy Fl(5)Y.20s in 36°00'·15N 5°35'·67W

YB S cardinal Lt buoy VQ(6)+LFl.10s in 36°00'·06N 5°35'·66W

These buoys have moved outside the W extent of this plan. (ILNW 127/18)

Portugal, Ponta da Atalaia NW

Amend Lt to Fl.R.4s12m6M in 37°00'·7N 8°55'·5W (ILNW 128/18)

Portugal, Ponta de Sagres

Amend duration of Pta de Sagres Lt Iso.R.2s52m11M to 4s in 36°59'·7N 8°57'·0W (ILNW 129/18)

C52 (Ed 9/2015) WGS 84

Jordans Spit S

Insert Y pillar Lt buoy Fl(5)Y.20s in 53°32'·31N 3°13'·71W (ILNW 69/18)

C55 (Ed 3/2015) WGS 84

Galway Harbour (Plan C)

Insert:

G starboard con Lt buoy **Fairway Buoy No 1** Fl.G.3s(sync) in 53°15'·68N 9°02'·27W

R port can Lt buoy **Fairway Buoy No 2** Fl.R.3s(sync) in 53°15'·65N 9°02'·33W

R port can Lt buoy **Mid Fairway** Fl.R.2s in 53°15'·80N 9°02'·53W (ILNW 47/18)

Approaches to Dingle Harbour (Main chart & Plan I)

Main chart

Amend Lt to Fl.WRG.3s20m6M in 52°07'·30N 10°15'·51W

Plan I

Amend Lt to Fl.WRG.3s20m6M in 52°07'·30N 10°15'·51W and add Lt sectors: 310° - G - 328° - W - 000° - R - 024° (ILNW 121/18)

C56 (Ed 6/2017) WGS 84

Approaches to Dingle Harbour (Main chart & Plan A)

Main chart

Amend Lt to Fl.WRG.3s6M in 52°07'·30N 10°15'·51W

Plan A

Amend Lt to Fl.WRG.3s20m6M in 52°07'·30N 10°15'·51W and add Lt sectors: 310° - G - 328° - W - 000° - R - 024° (ILNW 121/18)

Roche's Point (Main chart & Plan P)

Amend range of Lt to 18/12M plus insert racon sym and assoc. lgd AIS in 51°47'·58N 8°15'·29W (ILNW 152/18)

C57 (Ed 4/2017) WGS 84

Tuskar Rock S

Delete racon sym. and assoc. lgd AIS at YB S cardinal pillar Lt buoy **South Rock** Q(6)+LFl.15s in 52°10'·88N 6°12'·82W (ILNW 151/18)

Roche's Point (Main chart & Plan B)

Amend range of Lt to 18/12M plus insert racon sym and assoc. lgd AIS in 51°47'·58N 8°15'·29W (ILNW 152/18)

C59 (Ed 9/2015) WGS 84

Burnham-on-Sea (Plan H)

Insert leading line extending in direction 297° from 51°14'·39N 2°59'·93W and assoc. lgd Ldg Lts 117°. Delete existing leading line and assoc. lgd Ldg Lts 112°. (ILNW 14/18)

Swansea Bay (Main chart & Plan A)

Delete Y special spher Lt buoy Fl(5)Y.20s in:

51°34'·60N 3°57'·15W (Plan A)

51°34'·50N 3°54'·25W (Main chart)

51°31'·02N 3°50'·89W (Main chart) (ILNW 55/18)

Slimeroad Sand (Plan L)

Insert lgd *Changeable Depths* (see Note) centred on 51°37'·37N 2°38'·69W (ILNW 84/18)

C61 (Ed 3/2016) WGS 84

Courtown

Insert Lt Fl.R.5s3M&Fl.G.5s3M in 52°38'·63N 6°13'·51W (ILNW 34/18)

Tuskar Rock S

Delete racon sym. and assoc. lgd A/S at YB S cardinal pillar Lt buoy **S Rock** Q(6)+LFl.15s in 52°10'·81N 6°12'·83W (ILNW 151/18)

C62 (Ed 7/2016) WGS 84

Carlingford Lough (Plan G)

Amend duration of Y special pillar Lt buoy Fl.Y.6s to 5s in 54°01'·34N 6°06'·43W (ILNW 17/18)

Carlingford Lough (Plan G)

Insert:

R Lt Bn 2F.R(vert) in 54°02'·04N 6°07'·82W

G starboard Lt Bn Fl.G in 54°02'·04N 6°05'·88W

R port Lt Bn Fl.R in 54°01'·99N 6°05'·96W

GRG con Lt buoy with triangle topmark Fl(2+1)G.6s in 54°01'·86N 6°06'·21W

Lgd (*marked by Lt Bns*) orientated NW to SE centred on 54°02'·21N 6°05'·91W (ILNW 35/18)

Blackpool W & Jordans Spit

Move Y pillar Lt buoy Fl(5)Y.20s in:

53°49'·00N 3°07'·58W to 53°47'·69N 3°08'·27W

53°34'·62N 3°12'·39W to 53°32'·31N 3°13'·71W (ILNW 69/18)

C64 (Ed 4/2016) WGS 84

Loch Indaal

Insert Lt Iso.WRG.4s5M (occas) in 55°46'·01N 6°21'·63W (ILNW 26/18)

Belfast Lough (Plan G)

Delete Y mooring Lt buoy Fl.Y.5s in 54°43'·35N 5°44'·72W (ILNW 51/18)

Belfast Lough (Main chart & Plan G)

Delete G con Lt buoy **Cloghan Jetty** Q.G in 54°44'·12N 5°41'·60W (ILNW 120/18)

C66 (Ed 4/2016) WGS 84

Inner Sound

Move Y spher. Lt buoy Fl.Y.5s in 57°28'·50N 5°52'·67W to 57°29'·13N 5°52'·54W (ILNW 86/18)

C67 (Ed 11/2017) WGS 84

Stoerhead

Amend range of Lt Fl.15s59m24M to 18M in 58°14'·40N 5°24'·16W (ILNW 16/18)

C68 (Ed 7/2017) WGS 84

Fall of Warness & Scapa Flow

Insert Turbine depth 7·5m enclosed by circular dangerline in 59°08'·05N 2°48'·89W

Amend Lt desc Fl(5)Y.20s at Y special spher Lt buoy to Fl.Y.5s in 58°53'·72N 2°57'·00W (ILNW 19/18)

Scapa Flow

Add lgd (2 buoys) to Lt desc Fl.Y.5s at Y special spher Lt buoy in 58°53'·72N 2°57'·00W (ILNW 46/18)

Hoy E, Green Head

Delete Y spec. con Lt buoy Fl(5)Y.20s in 58°52'·53N 3°12'·40W (ILNW 132/18)

C69 (Ed 6/2013) WGS 84

Mew Island (*correction amended – see ILNW 212/18*)

Delete lgd FogDetLt at **LIGHTHOUSE** Lt in 54°41'·92N 5°30'·82W. Radar and main Lt are unchanged. (ILNW 27/18)

Belfast Lough

Delete Y mooring Lt buoy Fl.Y.5s in 54°43'·32N 5°44'·55W (ILNW 51/18)

Belfast Lough

Delete G con Lt buoy Q.G in 54°44'·12N 5°41'·60W (ILNW 120/18)

C70 (Ed 4/2016) WGS 84

Lowestoft SE

Construction works are about to commence on the East Anglia ONE Wind Farm.

Insert limit of restricted area joining:

52°19'·3N 2°27'·6E

52°20'·1N 2°34'·8E

52°08'·4N 2°33'·4E

52°09'·4N 2°24'·3E

Insert wind turbine sym centred on 52°14'·3N 2°30'·0E

Add assoc. lgd *East Anglia ONE Wind Farm under const'n (2018) (buoyed)*.

Yachtsmen are advised that a safety zone of 500m becomes operational around the turbines under construction. (ILNW 78/18)

Borkum Riffgrund N (*Correction amended - see ILNW 222/18*)

Work has begun on the construction of the EnBW Hohe See Wind Farm S of Global Tech 1 Wind Farm.

Insert restricted area joining:

54°27'·4N 6°24'·0E

54°22'·9N 6°22'·5E

54°27'·6N 6°15'·1E

54°29'·8N 6°18'·8E

Insert wind turbine sym centred on 54°26'·0N 6°20'·0E

Add associated lgd *under const'n (buoyed)*. (ILNW 95/18)

Cromer Knoll SE

Construction work on the Dudgeon Wind Farm is now complete. Replace lgd *Under const'n* (2016-2017) with *Dudgeon Wind Farm* centred on 53°14'·9N 1°31'·2E (ILNW 106/18)

Borkumriff Ground NE

Construction work on the windfarms is now complete.

Delete lgd *under const'n* centred on:

54°01'·5N 6°48'·7E

54°02'·3N 6°59'·4E (ILNW 141/18)

Outer Dowsing E

Insert racon sym. plus assoc. lgd AIS at platform in 53°24'·8N 1°16'·3E (ILNW 153/18)

Y9 (Ed 11/2014) WGS 84

Approaches to Boston

Move:

G con Lt buoy **No 1** Fl.G.3s in 52°57'·93N 0°15'·42E to 52°57'·84N 0°15'·03E

R can Lt buoy **Alpha** Fl.R.3s in 52°57'·66N 0°14'·99E to 52°57'·69N 0°15'·06E

Delete RW Lt buoy **Boston Roads** LFl.10s in 52°57'·69N 0°15'·96E (ILNW 70/18)

Notification of new edition

A new March 2018 edition of this chart will shortly be published. In addition to the listed corrections the chart specification has been improved to show coloured light flashes. The latest depth surveys have been applied. There has been general updating throughout.

(ILNW 124/18)

Y16 (Ed 6/2017) WGS 84

River Stour

Insert depth 1·4m in:

51°56'·84N 1°12'·71E

51°56'·83N 1°12'·88E

Extend 2m contour N to enclose

Replace depth 2·3m with depth 1·8m in 51°57'·05N 1°10'·74E (ILNW 66/18)

Y17 (Ed 11/2017) WGS 84

Approaches to River Colne

Insert drying height:

-0·3m in 51°45'·98N 0°58'·38E

-1·1m in 51°46'·10N 0°59'·11E

-1·4m in 51°46'·47N 1°00'·73E

Insert depth 1·9m in 51°46'·75N 1°01'·40E and extend 2m contour SW to enclose. Delete depth 2·6m close NW.

Replace depth 2·5m with depth 1·8m in 51°46'·18N 1°08'·36E (ILNW 18/18)

Approaches to River Blackwater

Move G con Lt buoy:

Eagle Q.G in 51°44'·13N 1°03'·83E to 51°44'·11N 1°03'·63E

Bench Head Fl(3)G.10s in 51°44'·69N 1°01'·10E to 51°44'·56N 1°01'·19E

Move R can Lt buoy **NW Knoll** Fl(2)R.5s in 51°44'·35N 1°02'·17E to 51°44'·29N 1°02'·14E (ILNW 64/18)

Y18 (Ed 4/2016) WGS 84

Kingsnorth Power Station

Delete **CHIMNEY** (198) (R Lt) in 51°25'·10N 0°36'·23E (ILNW 162/18)

Y23 (Ed 7/2016) WGS 84

Approaches to Poole Harbour

Insert drying height -0.3m in 50°40'·75N 1°56'·15W

Insert depth:

0.4m in 50°40'·99N 1°56'·36W

0.3m in 50°40'·43N 1°55'·89W (ILNW 40/18)

Port of Poole Marina (Main chart & Plan A)

Works on the South Quay Development at Poole Harbour are now complete.

Main chart

Insert minor Lt star in 50°42'·44N 1°59'·15W. This Lt marks the end of the new quay.

Delete lgd *Works in Progress (2017)* centred on 50°42'·46N 1°59'·13W

Delete Lt star in:

50°42'·50N 1°59'·18W

50°42'·45N 1°59'·32W

Plan A

Insert accompanying block correction in 50°42'·47N 1°59'·20W (ILNW 130/18)

Sandbanks

Amend Lt desc. to 2F.G(vert) centred on 50°40'·97N 1°56'·99W (ILNW 131/18)

Y26 (Ed 12/2016) WGS 84

Milford Docks Channel (Plan A)

Replace depth 2.1m with depth 1.8m in 51°42'·52N 5°02'·22W (ILNW 100/18)

Y58 (Ed 7/2016) WGS 84

Falmouth Bay

Insert circular dangerline and lgd *Obstn* in 50°07'·64N 5°01'·47W (ILNW 83/18)

2000+1 (Ed 1/2015) WGS 84

Approaches to River Colne, Clacton-on-Sea & Walton-on-the-Naze

Insert drying height -1.4m in 51°46'·47N 1°00'·73E

Insert depth:

1.9m in 51°46'·75N 1°01'·40E

1.8m in 51°46'·18N 1°08'·36E

1.8m in 51°50'·74N 1°17'·16E (ILNW 18/18)

Long Sand Head Two-Way Route

The limits of the routing measures have been amended.

Insert limit of routing measure joining:

51°47'·50N 1°35'·64E

51°48'·32N 1°36'·96E

51°48'·16N 1°38'·97E

Delete former limit of routing measure between:

51°47'·50N 1°35'·64E and 51°47'·86N 1°38'·97E

51°47'·77N 1°38'·16E and 51°48'·22N 1°38'·16E (ILNW 44/18)

Approaches to River Blackwater

Move G con Lt buoy:

Eagle Q.G in 51°44'·13N 1°03'·83E to 51°44'·11N 1°03'·63E

Bench Head Fl(3)G.10s in 51°44'·69N 1°01'·10E to 51°44'·56N 1°01'·19E

Move R can Lt buoy **NW Knoll** Fl(2)R.5s in 51°44'·35N 1°02'·17E to 51°44'·29N 1°02'·14E (ILNW 64/18)

2000+4 (Ed 1/2015) WGS 84

River Stour

Insert depth 1.4m in:

51°56'·84N 1°12'·71E

51°56'·83N 1°12'·88E

Extend 2m contour N to enclose

Replace depth 2.3m with depth 1.8m in 51°57'·05N 1°10'·74E (ILNW 66/18)

2000+5 (Ed 1/2015) WGS 84

River Stour

Insert depth 1.4m in:

51°56'·84N 1°12'·71E

51°56'·83N 1°12'·88E

Extend 2m contour N to enclose

Replace depth 2.3m with depth 1.8m in 51°57'·05N 1°10'·74E (ILNW 66/18)

2000+7 (Ed 1/2015) WGS 84

Approaches to River Colne

Insert drying height:

-0.3m in 51°45'·98N 0°58'·38E

-1.1m in 51°46'·10N 0°59'·11E

-1.4m in 51°46'·47N 1°00'·73E

Insert depth 1.9m in 51°46'·75N 1°01'·40E (ILNW 18/18)

Approaches to River Blackwater

Move G con Lt buoy:

Eagle Q.G in 51°44'·13N 1°03'·83E to 51°44'·11N 1°03'·63E

Bench Head Fl(3)G.10s in 51°44'·69N 1°01'·10E to 51°44'·56N 1°01'·19E

Move R can Lt buoy **NW Knoll** Fl(2)R.5s in 51°44'·35N 1°02'·17E to 51°44'·29N 1°02'·14E (ILNW 64/18)

2000+10 (Ed 1/2015) WGS 84

Approaches to Lowestoft

Delete *Wk (buoyed)* depth 5.1m in 52°25'·23N 1°49'·67E (ILNW 2/18)

2100+1 (Ed 1/2015) WGS 84

Sheerness NW

Insert drying height -0.2m in 51°27'·58N 0°44'·70E (ILNW 25/18)

Notification of New Edition

A new February 2018 edition of this atlas will shortly be published. In addition to the listed corrections, the latest depth surveys have been applied. The latest wind farm information is included where relevant. There has been general updating throughout.

The 2018 edition is now wirebound and tidal stream information is included. Individual sheets of this atlas will no longer be sold separately. However, 1st edition charts Y7 and Y14 will shortly be published and are replicas of charts 2100.1 and 2100.5. For details of these please see our website. (ILNW 67/18)

2100+2 (Ed 1/2015) WGS 84

Sheerness Middle Sand

Insert drying height -0.2m in 51°27'·58N 0°44'·70E. Delete depth 0.2m close SW (ILNW 25/18)

Notification of New Edition

A new February 2018 edition of this atlas will shortly be published. In addition to the listed corrections, the latest depth surveys have been applied. The latest wind farm information is included where relevant. There has been general updating throughout.

The 2018 edition is now wirobound and tidal stream information is included. Individual sheets of this atlas will no longer be sold separately. However, 1st edition charts Y7 and Y14 will shortly be published and are replicas of charts 2100.1 and 2100.5. For details of these please see our website. (ILNW 67/18)

2100+2 (Ed 2/2018) WGS 84

Kingsnorth Power Station

Delete **CHY** (198) in 51°25'·10N 0°36'·23E (ILNW 162/18)

2100+3 (Ed 1/2015) WGS 84

Gallions Reach, Ware Point

Insert dangerous Wk sym. in 51°30'·32N 0°05'·14E and YBY W card pillar Lt buoy Q(9)15s close NW (ILNW 5/18)

Notification of New Edition

A new February 2018 edition of this atlas will shortly be published. In addition to the listed corrections, the latest depth surveys have been applied. The latest wind farm information is included where relevant. There has been general updating throughout.

The 2018 edition is now wirobound and tidal stream information is included. Individual sheets of this atlas will no longer be sold separately. However, 1st edition charts Y7 and Y14 will shortly be published and are replicas of charts 2100.1 and 2100.5. For details of these please see our website. (ILNW 67/18)

2100+4 (Ed 1/2015) WGS 84

Sheerness Middle Sand

Insert drying height -0·2m in 51°27'·58N 0°44'·70E. Delete depth 0·2m close SW (ILNW 25/18)

Notification of New Edition

A new February 2018 edition of this atlas will shortly be published. In addition to the listed corrections, the latest depth surveys have been applied. The latest wind farm information is included where relevant. There has been general updating throughout.

The 2018 edition is now wirobound and tidal stream information is included. Individual sheets of this atlas will no longer be sold separately. However, 1st edition charts Y7 and Y14 will shortly be published and are replicas of charts 2100.1 and 2100.5. For details of these please see our website. (ILNW 67/18)

2100+5 (Ed 1/2015) WGS 84

Notification of New Edition

A new February 2018 edition of this atlas will shortly be published. In addition to the listed corrections, the latest depth surveys have been applied. The latest wind farm information is included where relevant. There has been general updating throughout.

The 2018 edition is now wirobound and tidal stream information is included. Individual sheets of this atlas will no longer be sold separately. However, 1st edition charts Y7 and Y14 will shortly be published and are replicas of charts 2100.1 and 2100.5. For details of these please see our website. (ILNW 67/18)

2100+5 (Ed 2/2018) WGS 84

Kingsnorth Power Station

Delete **CHIMNEY** (198) in 51°25'·10N 0°36'·23E (ILNW 162/18)

2100+6 (Ed 1/2015) WGS 84

Notification of New Edition

A new February 2018 edition of this atlas will shortly be published. In addition to the listed corrections, the latest depth surveys have been applied. The latest wind farm information is included where relevant. There has been general updating throughout.

The 2018 edition is now wirobound and tidal stream information is included. Individual sheets of this atlas will no longer be sold separately. However, 1st edition charts Y7 and Y14 will shortly be published and are replicas of charts 2100.1 and 2100.5. For details of these please see our website. (ILNW 67/18)

2100+7 (Ed 1/2015) WGS 84

Notification of New Edition

A new February 2018 edition of this atlas will shortly be published. In addition to the listed corrections, the latest depth surveys have been applied. The latest wind farm information is included where relevant. There has been general updating throughout.

The 2018 edition is now wirobound and tidal stream information is included. Individual sheets of this atlas will no longer be sold separately. However, 1st edition charts Y7 and Y14 will shortly be published and are replicas of charts 2100.1 and 2100.5. For details of these please see our website. (ILNW 67/18)

2100+7 (Ed 2/2018) WGS 84

Kellet Gut

Replace Wk depth 3m with drying Wk sym. in 51°14'·92N 1°34'·24E (ILNW 134/18)

2100+8 (Ed 1/2015) WGS 84

Notification of New Edition

A new February 2018 edition of this atlas will shortly be published. In addition to the listed corrections, the latest depth surveys have been applied. The latest wind farm information is included where relevant. There has been general updating throughout.

The 2018 edition is now wirobound and tidal stream information is included. Individual sheets of this atlas will no longer be sold separately. However, 1st edition charts Y7 and Y14 will shortly be published and are replicas of charts 2100.1 and 2100.5. For details of these please see our website. (ILNW 67/18)

2100+9 (Ed 1/2015) WGS 84

Notification of New Edition

A new February 2018 edition of this atlas will shortly be published. In addition to the listed corrections, the latest depth surveys have been applied. The latest wind farm information is included where relevant. There has been general updating throughout.

The 2018 edition is now wirobound and tidal stream information is included. Individual sheets of this atlas will no longer be sold separately. However, 1st edition charts Y7 and Y14 will shortly be published and are replicas of charts 2100.1 and 2100.5. For details of these please see our website. (ILNW 67/18)

2100+10 (Ed 1/2015) WGS 84

Notification of New Edition

A new February 2018 edition of this atlas will shortly be published. In addition to the listed corrections, the latest depth surveys have been applied. The latest wind farm information is included where relevant. There has been general updating throughout.

The 2018 edition is now wirobound and tidal stream information is included. Individual sheets of this atlas will no longer be sold separately. However, 1st edition charts Y7 and Y14 will shortly be published and are replicas of charts 2100.1 and 2100.5. For details of these please see our website. (ILNW 67/18)

2110+1 (Ed 1/2017) WGS 84

Cap Lévi

Insert racon sym. plus assoc. lgd AIS at Lt Fl.R.5s17M in 49°41'·7N 1°28'·2W (ILNW 154/18)

2110+2 (Ed 1/2017) WGS 84

Kellet Gut

Replace Wk depth 3m with drying Wk sym. in 51°14'·92N 1°34'·24E (ILNW 134/18)

2110+3 (Ed 1/2017) WGS 84

Ridens de Dieppe NW

Insert Y special pillar Lt buoy ODAS Fl(5)Y.20s in 50°07'·43N 1°00'·85E (ILNW 58/18)

2110+8 (Ed 1/2017) WGS 84

Longitude label (Plan B)

Amend plan B longitude label to 0°20'E (ILNW 102/18)

2110+10 (Ed 1/2017) WGS 84

Baie du Grand Vey

Insert Wk depth 1·8m in 49°24'·95N 1°07'·90W (ILNW 122/18)

Cap Lévi

Insert racon sym. plus assoc. lgd AIS at **LIGHTHOUSE** Fl.R.5s36m17M in 49°41'·75N 1°28'·39W (ILNW 154/18)

2110+11 (Ed 1/2017) WGS 84

Baie du Grand Vey (Plan H)

Insert Wk depth 1·8m in 49°24'·95N 1°07'·90W (ILNW 122/18)

2120 (Ed 5/2017) WGS 84

Drempel van Borssele (2120.5)

Delete Y spec spar buoy:

F9 in 51°25'·05N 3°41'·74E

F11 in 51°24'·70N 3°42'·18E

Delete Y spar buoy:

F13 in 51°24'·45N 3°42'·27E

FP v T in 51°24'·13N 3°42'·31E

Delete maritime limit joining the above points and:

51°24'·12N 3°42'·42E

51°24'·71N 3°42'·33E

51°25'·11N 3°41'·87E

Delete assoc. lgd *Fietspad* (see Note) centred on 51°24'·78N 3°41'·73E (ILNW 48/18)

Texelstroom (2120.10)

Insert Y spher. Lt buoy **TX-GM** Fl.Y.10s in 53°00'·80N 4°48'·80E (ILNW 71/18)

Lowestoft SE (2120.11)

Construction works are about to commence on the East Anglia ONE Wind Farm.

Insert limit of restricted area joining:

52°19'·3N 2°27'·6E

52°20'·1N 2°34'·8E

52°08'·4N 2°33'·4E

52°09'·4N 2°24'·3E

Insert wind turbine sym centred on 52°14'·3N 2°30'·0E

Add assoc. lgd *East Anglia ONE Wind Farm under const'n (2018)* (buoyed).

Yachtsmen are advised that a safety zone of 500m becomes operational around the turbines under construction. (ILNW 78/18)

North Hinder Junction NW (2120.1)

Construction works are about to commence on the East Anglia ONE Wind Farm.

Insert limit of restricted area joining:

52°15'·2N 2°34'·2E

52°08'·4N 2°33'·4E

52°08'·7N 2°31'·0E

Insert wind turbine sym centred on 52°12'·0N 2°32'·2E

Add assoc. lgd *East Anglia ONE Wind Farm under const'n (2018) (buoyed)*.

Yachtsmen are advised that a safety zone of 500m becomes operational around the turbines under construction. (ILNW 78/18)

Notification of New Edition

A new February 2018 edition of this chart atlas will shortly be published. In addition to the listed corrections, the charts have been fully updated to the latest chart specification. There has been general updating throughout, and a new plan of Cadzand-Bad has been added. (ILNW 92/18)

2120 (Ed 2/2018) WGS 84

TSS Off Texel S (2120.2)

Delete racon sym and assoc. lgd Racon(D) at YBY W cardinal pillar Lt buoy VQ(9)10s in 52°45'·9N 4°11'·9E (ILNW 137/18)

TSS Off Texel S (2120.9)

Delete racon sym and assoc. lgd Racon(D) at YBY W cardinal pillar Lt buoy VQ(9)10s in 52°45'·93N 4°12'·26E (ILNW 137/18)

Schaar van Spijkerplaat (2120.4 & 2120.5)

Insert R port spar buoy:

SS 2 in 51°25'·64N 3°37'·63E. Delete R spar buoy **SS 2** close NE (2120.4 & 2120.5)

SS 10 in 51°24'·89N 3°40'·84E. Delete R spar buoy **SS 10** close SW (2120.5)

Insert R port spar Lt buoy **SS 8** Iso.R.4s in 51°25'·26N 3°39'·83E. Delete R spar buoy **SS 8** close SW (2120.5)

Insert G starboard spar Lt buoy:

SS 9 Iso.G.4s in 51°24'·95N 3°39'·66E. Delete G starboard spar buoy **SS 9** close SW (2120.5)

SS 11 Iso.G.8s in 51°24'·60N 3°40'·52E. Delete G spar buoy **SS 11** close W (2120.5)

Move:

R can Lt buoy **SS 4** Q.R in 51°25'·33N 3°37'·98E to 51°25'·23N 3°37'·82E

R port spar buoy **SS 6** in 51°25'·09N 3°38'·77E to 51°25'·30N 3°38'·85E

G con Lt buoy **SS 7** Iso.G.8s in 51°24'·85N 3°38'·72E to 51°24'·90N 3°38'·73E (ILNW 138/18)

Pas van Terneuzen (2120.5)

Move:

E cardinal Lt buoy **PvT-SS** from 51°24'·12N,3°42'·42E to 51°23'·92N,3°42'·47E

G conical Lt buoy **13** from 51°24'·45N,3°42'·38E to 51°24'·30N,3°42'·43E

G spar buoy **13A** from 51°23'·61N,3°41'·87E to 51°23'·57N,3°41'·85E

W cardinal Lt buoy **PvT-E** from 51°24'·30N,3°42'·74E to 51°24'·42N,3°42'·73E

Y can buoy **WAAK** from 51°24'·26N,3°42'·78E to 51°24'·38N,3°42'·77E (ILNW 148/18)

2130 (Ed 3/2017) WGS 84

Drempel van Borssele (2130.3 & 2130.4)

Delete Y spec spar buoy:

F9 in 51°25'·05N 3°41'·74E

F11 in 51°24'·70N 3°42'·18E

Delete Y spar buoy:

F13 in 51°24'·45N 3°42'·27E

FP v T in 51°24'·13N 3°42'·31E

Delete maritime limit joining the above points and:

51°24'·12N 3°42'·42E

51°24'·71N 3°42'·33E

51°25'·11N 3°41'·87E

Delete assoc. lgd *Fietspad* (see Note) centred on 51°24'·57N 3°42'·28E (ILNW 48/18)

2130 (Ed 3/2018) WGS 84

Platen van Ossensisse (2130.6)

Insert depth 3·5m in 52°26'·03N,4°00'·05E. Extend 5m contour to include (ILNW 146/18)

Overloop van Valkenisse (2130.6)

The 'Fietspad' has been extended W.

Amend name of Y special spar buoy from **F60** to **F60A** in 51°22'·43N,4°07'·26E.

Insert Y special spar buoy **F60** in 51°22'·37N,4°06'·76E.

Insert extent of extension of 'Fietspad' in:

51°22'·43N,4°07'·26E

51°22'·37N,4°06'·76E

51°22'·34N,4°07'·02E

51°22'·38N,4°07'·52E (ILNW 147/18)

2140 (Ed 2/2018)

Koggehaven (2140.7)

Insert:

Minor R Lt in 51°53'·88N,4°18'·52E

Minor G Lt in 51°53'·87N,4°18'·60E (ILNW 149/18)

Schelde-Rijnkanaal (2140.16-2)

The numbering of the lights and buoys on the Schelde-Rijnkanaal will be changed in April 2018. The numbers will now descend as you travel South.

Amend name of marker:

SRK 6-2V11 to **SRK 92-2V11** in 51°38'·17N,4°14'·38E

1 to **109** in 51°38'·03N,4°14'·56E

SRK 4 to **SRK 90** in 51°38'·13N,4°14'·25E

2 to **88** in 51°38'·07N,4°14'·07E

3 to **107** in 51°37'·93N,4°14'·14E

SRK 2E to **SRK 86** in 51°37'·92N,4°13'·72E

5 to **105** in 51°37'·83N,4°13'·73E

6 to **84** in 51°37'·70N,4°12'·86E

7 to **103** in 51°37'·63N,4°12'·92E

9 to **101** in 51°37'·49N,4°12'·55E (ILNW 150/18)

2150 (Ed 2/2017) WGS 84

Hoogsand (2150.17)

Delete Lt Tide Gauge Fl(5)Y.20s in 53°18'·26N 7°13'·26E (ILNW 37/18)

Robbenhoek (2150.6 & 2150.7)

Delete YB S cardinal spar buoy **OBSTN-NM** in 53°18'·38N 5°14'·15E (ILNW 56/18)

Approaches to Harlingen (2150.8)

Amend:

Lt Iso.G.8s to Fl(2+1)G.10s in 53°10'·53N 5°24'·63E

R Lt Bn Q.R to Fl(2+1)R.10s in 53°10'·70N 5°24'·85E

Replace R spar buoy with YB S cardinal buoy:

P12 in 53°10'·86N 5°22'·96E. Delete R spar buoy **P10A** close NW & **P12A** close SE.
P14 in 53°10'·83N 5°23'·09E
P16 in 53°10'·80N 5°23'·21E. Delete R spar buoy **P14A** close NW & **P16A** close SE.
P18 in 53°10'·77N 5°23'·34E (ILNW 57/18)

Texelstroom (2150.2 & 2150.3)

Insert Y spher. Lt buoy **TX-GM** Fl.Y.10s in 53°00'·80N 4°48'·80E (ILNW 71/18)

2150 (Ed 3/2018) WGS 84

Westerems (2150.12)

Delete RW sphere buoy in 53°36'·86N 6°19'·40E (ILNW 139/18)

Waddenzee, Vlieter (2150.3)

Delete Y special spar buoy:

VL-A in 52°59'·58N, 5°04'·91E

VL-B in 52°59'·42N, 5°05'·43E

VL-C in 52°58'·91N, 5°05'·43E

VL-D in 52°58'·91N, 5°04'·88E

VL-E in 52°59'·12N, 5°04'·27E

VL-F in 52°59'·46N, 5°04'·05E

Delete associated restricted area line work and no fishing, no anchoring symbols. (ILNW 145/18)

2200+5 (Ed 3/2016) WGS 84

Solent Mark Changes 2018

A number of the SCRA racing buoys have been issued new names for 2018. These changes are as follows:

Parhelion PSC to *PSC Parhelion Racing Series* in 50°46'·82N 1°07'·35W

A-Plan to *Alfie* in 50°47'·08N 1°06'·78W

These changes will be included in the forthcoming new edition due to be published Spring 2018. (ILNW 101/18)

2200+6 (Ed 3/2016) WGS 84

Solent Mark Changes 2018

A number of the SCRA racing buoys have been issued new names for 2018. These changes are as follows:

Party to *Cowes Yacht Haven* in 50°45'·68N 1°19'·98W

C J May to *East Bay* in 50°45'·97N 1°19'·45W

Island SC to *Party* in 50°46'·10N 1°18'·43W

Zetman to *Rigit UK Rigging* in 50°49'·21N 1°17'·46W

Jonathan Janson to *Robin Culpan* in 50°48'·46N 1°15'·72W

Southampton Solent University to *Fever-Tree* in 50°46'·43N 1°15'·09W

Kilchoman to *Goodall Roofing* in 50°47'·33N 1°14'·59W

Mackley Van Oord to *Quarr* in 50°45'·03N 1°11'·89W

PSC Parhelion to *PSC Parhelion Racing Series* in 50°46'·82N 1°07'·35W

A-Plan to *Alfie* in 50°47'·08N 1°06'·78W

Insert Y special spher. racing buoy:

Cowes Corinthian in 50°46'·15N 1°17'·20W

Maraval in 50°47'·70N 1°15'·25W

Delete Or spher. buoy *Baxters* in 50°45'·23N 1°20'·69W

These changes will be included in the forthcoming new edition due to be published Spring 2018. (ILNW 101/18)

2200+7 (Ed 3/2016) WGS 84

Solent Mark Changes 2018

A number of the SCRA racing buoys have been issued new names for 2018. These changes are as follows:

Bainbridge International to *Cowes Yacht Haven* in 50°45'·68N 1°19'·98W

C J May to *East Bay* in 50°45'·97N 1°19'·45W

Island SC to *Party* in 50°46'·10N 1°18'·43W

Zetman to *Rigit UK Rigging* in 50°49'·21N 1°17'·46W

Insert Y special spher. racing buoy *Cowes Corinthian* in 50°46'·15N 1°17'·20W

Delete Or spher. buoy *Baxters* in 50°45'·23N 1°20'·69W

These changes will be included in the forthcoming new edition due to be published Spring 2018. (ILNW 101/18)

2200+8 (Ed 3/2016) WGS 84

Solent Mark Changes 2018

A number of the SCRA racing buoys have been issued new names for 2018. These changes are as follows:

Denisons to "H" in 50°44'·30N 1°28'·16W

Bart's Bash to *1851 Trust* in 50°44'·83N 1°26'·09W

These changes will be included in the forthcoming new edition due to be published Spring 2018. (ILNW 101/18)

2200+9 (Ed 3/2016) WGS 84

Beaulieu River (Plan H)

Insert G con Lt buoy:

Fl.G.4s in 50°48'·00N 1°25'·16W

Mulberry Fl.G.4s in 50°47'·66N 1°24'·60W

Fiddlers Fl.G.4s in 50°47'·48N 1°24'·50W

Gins Fl.G.4s in 50°47'·05N 1°24'·56W

Insert R can Lt buoy:

No 28 Fl.R.4s in 50°48'·00N 1°24'·70W

No 26 Fl.R.4s in 50°46'·80N 1°24'·05W

Insert G starboard Lt Bn **No 17** Fl.G.4s in 50°46'·82N 1°23'·35W. Delete G starboard Bn **No 17** close S

Replace G starboard Bn with G starboard Lt Bn **No 13** Fl.G.4s in 50°46'·94N 1°22'·72W (ILNW 28/18)

Solent Mark Changes 2018 (Plan C)

The following SCRA racing buoy has been issued a new name for 2018:

Island Sailing Club to *Party* in 50°46'·10N 1°18'·43W

Insert Y special spher. racing buoy *Cowes Corinthian* in 50°46'·15N 1°17'·20W

These changes will be included in the forthcoming new edition due to be published Spring 2018. (ILNW 101/18)

2300+2 (Ed 12/2015) WGS 84

Boscombe SE

Insert YB S cardinal pillar Lt buoy Q(6)+LFl.15s in 50°42'·95N 1°50'·38W (ILNW 15/18)

Approaches to Poole Harbour

Insert drying height -0.3m in 50°40'·75N 1°56'·15W (ILNW 40/18)

2300+3 (Ed 12/2015) WGS 84

Portland Harbour (Plan E)

Delete lgd *Works in progress (2017)* centred on 50°34'·33N 2°25'·84W (ILNW 6/18)

2300+5 (Ed 12/2015) WGS 84

Approaches to Poole Harbour

Insert drying height -0.3m in 50°40'.75N 1°56'.15W
Insert depth:
0.4m in 50°40'.99N 1°56'.36W
0.3m in 50°40'.43N 1°55'.89W (ILNW 40//18)

Poole Harbour East

Works on the South Quay Development at Poole Harbour are now complete.
Insert G minor Lt star in 50°42'.44N 1°59'.15W. This Lt marks the end of the new quay.
Delete lgd *Works in Progress (2017)* centred on 50°42'.46N 1°59'.13W
Delete Lt star in:
50°42'.50N 1°59'.18W
50°42'.45N 1°59'.32W (ILNW 130/18)

2400+2 (Ed 10/2015) WGS 84

Isles of Scilly

Replace drying height -0.6m with depth 3.4m in 49°54'.46N 6°20'.01W (ILNW 65/18)

2400+3 (Ed 10/2015) WGS 84

Saint Mary's Sound

Replace drying height -0.6m with depth 3.4m in 49°54'.46N 6°20'.01W (ILNW 65/18)

2400+8 (Ed 10/2015) WGS 84

St Austell Bay

Delete building sym. and lgd **BLDG** in 50°20'.26N 4°43'.94W (ILNW 36/18)

2400+9 (Ed 10/2015) WGS 84

St Austell Bay

Delete building sym. and lgd **BLDG** in 50°20'.26N 4°43'.94W (ILNW 36/18)

2400+12 (Ed 10/2015) WGS 84

Falmouth Bay

Insert circular dangerline and lgd *Obstn* in 50°07'.64N 5°01'.47W (ILNW 83/18)

2400+13 (Ed 10/2015) WGS 84

Plymouth Sound, Bovisand Pier

The SS(Diving) Bn is no longer lit. Delete Lt desc at Bn 2FG(vert)17m3M in 50°20'.25N 4°07'.72W (ILNW 52/18)

2400+14 (Ed 10/2015) WGS 84

Saint Mary's Sound

Replace drying height -0.6m with depth 3.4m in 49°54'.46N 6°20'.01W (ILNW 65/18)

2500+1 (Ed 3/2017) WGS 84

Cap Lévi

Insert racon sym. plus assoc. lgd AIS at Lt Fl.R.5s17M in 49°41'.7N 1°28'.2W (ILNW 154/18)

2500+2 (Ed 3/2017) WGS 84

Cap de la Hague SW

Insert dangerline joining:
49°42'.89N 2°00'.29W

49°42'·89N 1°59'·97W
49°42'·55N 1°59'·97W
49°42'·55N 2°00'·29W
plus assoc. lgd *ODAS*. (ILNW 49/18)

Cap Lévi

Insert racon sym. plus assoc. lgd AIS at **LIGHTHOUSE** Fl.R.5s36m17M in 49°41'·75N 1°28'·39W (ILNW 154/18)

2500+4 (Ed 3/2017) WGS 84

Cap de la Hague SW

Insert dangerline joining:

49°42'·89N 2°00'·29W
49°42'·89N 1°59'·97W
49°42'·55N 1°59'·97W
49°42'·55N 2°00'·29W
plus assoc. lgd *ODAS*. (ILNW 49/18)

Sark, Point Robert

Amend fog signal to Horn(1)30s at Lt Fl.15s65m20M in 49°26'·19N 2°20'·75W (ILNW 85/18)

2500+5 (Ed 3/2017) WGS 84

Sark, Point Robert

Amend fog signal to Horn(1)30s at **PT ROBERT LT HO.** in 49°26'·19N 2°20'·75W (ILNW 85/18)

2500+7 (Ed 3/2017) WGS 84

Sark, Point Robert (Plan C)

Amend fog signal to Horn(1)30s at **PT ROBERT LT HO.** in 49°26'·19N 2°20'·75W (ILNW 85/18)

2500+8 (Ed 3/2017) WGS 84

Sark, Point Robert

Amend fog signal to Horn(1)30s at Lt Fl.15s65m20M in 49°26'·19N 2°20'·75W (ILNW 85/18)

2510+3 (Ed 5/2015) WGS 84

Binic

Amend Lt to Fl(4)G.15s12m6M in 48°36'·07N 2°48'·92W (ILNW 155/18)

2510+6 (Ed 5/2015) WGS 84

Binic (Plan G)

Amend Lt to Fl(4)G.15s12m6M in 48°36'·07N 2°48'·92W (ILNW 155/18)

2600+1 (Ed 12/2016) WGS 84

Swansea Bay

Delete Y special spher Lt buoy Fl(5)Y.20s in:

51°34'·5N 3°54'·3W
51°31'·1N 3°50'·1W (ILNW 55/18)

2600+5 (Ed 12/2016) WGS 84

Swansea Bay (Main chart & Plan A)

Delete Y special spher Lt buoy Fl(5)Y.20s in:

51°34'·60N 3°57'·15W (Plan A)

51°34'·50N 3°54'·25W (Main chart)
51°31'·02N 3°50'·89W (Main chart) (ILNW 55/18)

2600+6 (Ed 12/2016) WGS 84

Burnham-on-Sea

Insert leading line extending in direction 297° from 51°14'·39N 2°59'·93W and assoc. lgd 117°. Delete existing leading line and assoc. lgd 112°. (ILNW 14/18)

2600+8 (Ed 12/2016) WGS 84

Slimeroad Sand

Insert lgd *Changing Depths* (see Note) centred on 51°37'·37N 2°38'·69W (ILNW 84/18)

2600+11 (Ed 12/2016) WGS 84

Milford Docks Channel (Plan A)

Replace depth 2·1m with depth 1·8m in 51°42'·52N 5°02'·22W (ILNW 100/18)

2700+1 (Ed 5/2016) WGS 84

Blackpool W & Jordans Spit

Move Y pillar Lt buoy Fl(5)Y.20s in:

53°49'·00N 3°07'·58W to 53°47'·69N 3°08'·27W

53°34'·62N 3°12'·39W to 53°32'·31N 3°13'·71W (ILNW 69/18)

2700+2 (Ed 5/2016) WGS 84

Liverpool (Plan A)

Delete fog signal Horn(3+3)15s at Lt 3F.R in 53°24'·31N 2°59'·92W (ILNW 54/18)

Jordans Spit

Move Y pillar Lt buoy Fl(5)Y.20s in 53°34'·62N 3°12'·39W to 53°32'·31N 3°13'·71W (ILNW 69/18)

2700+11 (Ed 5/2016) WGS 84

Courtown

Insert Lt Fl.R.5s3M&Fl.G.5s3M in 52°38'·63N 6°13'·51W (ILNW 34/18)

2700+12 (Ed 5/2016) WGS 84

Tuskar Rock S

Delete racon sym. and assoc. lgd A/S at YB S cardinal pillar Lt buoy **S Rock** Q(6)+LFl.15s in 52°10'·81N 6°12'·83W (ILNW 151/18)

M3 (Ed 6/2014) WGS 84

Puerto de Mahón (Plan E)

Insert Y spher buoy in:

39°53'·09N 4°17'·78E

39°53'·02N 4°17'·80E

39°52'·83N 4°17'·93E

39°52'·79N 4°18'·01E (ILNW 76/18)

Palma (Plan C)

Amend duration of Lt to 14·5s in:

39°34'·07N 2°37'·97E

39°33'·31N 2°38'·18E (ILNW 159/18)

M8 (Ed 5/2015) WGS 84

Golfo di Olbia (Plan C)

Insert limit of restricted area joining:

40°55'·60N, 9°38'·10E

40°55'·30N, 9°39'·20E

40°55'·20N, 9°38'·70E

40°55'·32N, 9°38'·00E

Add Igd Entry *Prohibited (Unexploded Ordnance)* (ILNW 82/18)

M10 (Ed 3/2011) WGS 84

Algeria, C. Sigli

Amend range of Lt to 20M in 36°53'·8N 4°45'·6E (ILNW 96/18)

M12 (Ed 1/2014) WGS 84

Dénia (Plan F)

Amend Lt FI(2+1)R to FI(3)G.9s in 38°50'·35N 0°07'·08E (ILNW 22/18)

Notification of new edition

A new April 2018 edition of this chart will shortly be published. In addition to the listed corrections the chart specification has been improved to show coloured light flashes. The latest depth surveys have been applied to the harbour plan of Torreveija. There has been general updating throughout.

(ILNW 144/18)

M13 (Ed 1/2016) WGS 84

Tarragona (Plan C)

Amend Lt FI(2)R.7s to Q.R in 41°05'·87N 1°12'·94E (ILNW 8/18)

Approaches to Valencia (Plan B)

Move BYB East pillar Lt buoy VQ(3)5s3M from 39°25'·37N 0°18'·20W to 39°25'·22N 0°18'·22W (ILNW 9/18)

Dénia (Plan A)

Amend Lt FI(2+1)R.21s to FI(3)G.9s in 38°50'·35N 0°07'·08E (ILNW 22/18)

Valencia Harbour (Plan B)

Works on the area under reclamation N of Dársena Ampliacion are now complete.

Insert land fill within pecked line centred on 39°26'·35N 0°19'·15W.

Delete:

label Area under reclamation 2015 centred on 39°26'·35N 0°19'·30W

Lt FI.R.3s in 39°26'·48N 0°19'·10W (ILNW 107/18)

Tarragona SW (Main chart & Plan C)

Main chart

Amend Lt to FI(2+1)R.7M in 41°05'·0N 1°12'·4E

Plan C

Amend Lt FI.R.5s12m7M to FI(2+1)R.14·5s14m7M in 41°04'·93N 1°12'·47E (ILNW 157/18)

M14 (Ed 4/2017) WGS 84

Barcelona Port Vell (Plan B)

Insert Lt:

FI(4)G.11s in 41°21'·80N 2°11'·20E

FI(2+1)G.15s in 41°21'·85N 2°11'·20E (ILNW 11/18)

Barcelona Port Vell (Plan B)

Delete Lt Fl(2+1)G.21s in 41°22'·27N 2°11'·15E (ILNW 21/18)

Barcelona Port Vell (Plan B)

Delete G spar Lt buoy Fl(3)G.9s in 41°21'·82N 2°11'·14E (ILNW 31/18)

Golfe de Lion

Insert Y special can Lt buoy ODAS Fl(5)Y.20s in 43°11'·3N 4°47'·6E (ILNW 143/18)

M15 (Ed 4/2015) WGS 84

Île de Planier NE

Amend desc. at Y spher ODAS Lt buoy from Fl(4)Y.15s&Fl(5)Y.20s (2 buoys) to Fl(5)Y.20s in 43°12'·49N 5°13'·80E (ILNW 12/18)

Rade d'Hyères (Plan B)

Amend Lt:

Iso.G.4s8m10M to Fl.R&G.4s4M in 43°05'·00N 6°09'·66E

Q(6)+LFl.15s9M to Q(6)+LFl.15s8m4M in 43°04'·92N 6°09'·58E

Oc.R.4s7M to Q.R.9m4M in 43°04'·71N 6°09'·46E

Fl.G.4s9m10M to Q.G.9m10M in 43°04'·64N 6°09'·53E (ILNW 42/18)

Monaco (Plan G)

Insert lgd *Seaplanes* (see Note) centred on:

43°43'·15N 7°25'·78E

43°44'·40N 7°26'·54E

Insert Y special pillar Lt buoy *Wave recorder* Fl(5)Y.20s in 43°43'·40N 7°26'·27E (ILNW 74/18)

Toulon S

Insert dangerline joining:

42°49'·8N 5°54'·0E

42°48'·0N 6°04'·2E

42°47'·4N 6°04'·2E

42°47'·4N 5°54'·6E

Plus assoc. lgd *Scientific Instruments*. (ILNW 77/18)

Golfe de Lion

Insert Y special can Lt buoy ODAS Fl(5)Y.20s in 43°11'·3N 4°47'·6E (ILNW 143/18)

M16 (Ed 7/2016) WGS 84

Foce del Calambrone (Plan F)

New breakwaters have been constructed at the Foce del Calambrone between the shore and the points marked by Lts listed below.

Insert Lt:

Oc.R.3s5M in 43°34'·88N 10°17'·55E

Oc.G.3s5M in 43°34'·72N 10°17'·62E (ILNW 50/18)

Approaches to La Spezia (Plan D)

Insert Lt Fl.Y.3s3m4M in:

44°03'·72N 9°51'·15E

44°03'·99N 9°51'·06E

Replace R port Lt Bn Fl.R.3s5m5M with R port can Lt buoy Fl.R.3s in 44°05'·12N 9°50'·72E (ILNW 123/18)

M18 (Ed 3/2010) WGS 84

Rada di Napoli (Plan B)

Insert Y special spar Lt buoy ODAS Fl(5)Y.20s in 40°49'·96N 14°16'·06E (ILNW 91/18)

M19 (Ed 11/2010) WGS 84

Gioia Tàuro

Amend range of Lt to 15M in 38°26'·50N 15°54'·33E (ILNW 160/18)

M22 (Ed 1/2011) WGS 84

Hefa (Haifa) (Plan C)

Insert R port pillar Lt buoy FI(2)R.5s in 32°49'·08N 35°01'·33E (ILNW 20/18)

Herzliya W

Insert dangerous wreck sym. in 32°10'·6N 34°46'·6E (ILNW 30/18)

Hefa (Haifa) (Plan C)

Delete Lt Q(2)R.5s6M in 32°49'·05N 35°01'·37E (ILNW 32/18)

Abu Qir NE

Insert dangerous wreck sym. in 31°23'·8N 30°06'·5E (ILNW 38//18)

M23 (Ed 11/2014) WGS 84

Automatic Identification System

Insert racon symbol and lgd AIS at Lt Rt Brestova FI(2)R.12s13M in 45°08'·3N 14°13'·4E (ILNW 60/18)

Automatic Identification System

Insert racon symbol and lgd AIS at Lt FI(2)R.10s11M in 42°59'·2N 16°01'·2E (ILNW 109/18)

M24 (Ed 12/2014) WGS 84

Automatic Identification System

Insert racon symbol and lgd AIS at Lt Rt Brestova FI(2)R.12s13M in 45°08'·28N 14°13'·39E (ILNW 60/18)

U. Malin

Insert BRB isolated danger Lt Bn FI(2)5s2M in 44°54'·67N 14°54'·44E (ILNW 73/18)

Otok Plavnik

Insert Lt Bn FI(2)R.5s4M in 44°57'·43N 14°33'·37E (ILNW 111/18)

M25 (Ed 6/2017) WGS 84

Murtersko More NW (Main chart & Plan E)

Replace dangerous underwater Rk sym with BRB isolated danger Bn in 43°48'·21N 15°22'·77E (ILNW 61/18)

Žutski Kanal (Main chart & Plan E)

Insert BRB isolated danger Bn in 43°49'·11N 15°20'·77E (ILNW 108/18)

M26 (Ed 6/2017) WGS 84

Automatic Identification System

Insert racon symbol and lgd AIS at Lt Rt Kobila FI(2)R.10s18m11M in 42°59'·2N 16°01'·2E (ILNW 109/18)

Luka Poljud (Plan C)

Insert *Obstn* depth 4·8m in 43°31'·16N 16°25'·12E (ILNW 110/18)

Split (Plan C)

The restricted area that prohibits navigation and fishing around the shoreline has been extended S and E between:

43°31'·37N 16°25'·20E (existing limit)

43°31'·31N 16°25'·18E

43°31'·26N 16°25'·38E

43°31'·15N 16°25'·36E

43°31'·15N 16°25'·49E

43°31'·27N 16°25'·61E (shore)

Amend associated Restricted Area note co-ordinates to 43°31'·3N 16°25'·6E and 43°31'·8N 16°26'·2E (ILNW 158/18)

M29 (Ed 7/2015) WGS 84

Golfo Di Taranto

Move Y spher Lt buoy FI(5)Y.20s in 40°17'·5N 16°49'·1E to 40°17'·4N 16°50'·8E (ILNW 43/18)

M40 (Ed 6/2014) WGS 84

Toulon S

Insert dangerline joining:

42°49'·8N 5°54'·0E

42°48'·0N 6°04'·2E

42°47'·4N 6°04'·2E

42°47'·4N 5°54'·6E

Plus assoc. lgd *Scientific Instruments*. (ILNW 77/18)

Corsica E Coast

Replace Y can Lt buoy FI(4)Y.12s with obstruction sym & lgd *Obstrn* in:

41°50'·0N 9°36'·1E

41°46'·8N 9°32'·1E

41°43'·6N 9°31'·5E (ILNW 80/18)

M50 (Ed 6/2017) WGS 84

Gulf of Hammamet

Insert platform sym in 35°55'·6N 11°33'·2E (ILNW 113/18)

Gioia Tàuro

Insert Lt DirWRG.15M in 38°26'·5N 15°54'·3E (ILNW 160/18)

G12 (Ed 7/2014) WGS 84

Levkas Canal (Plan A)

Replace existing note **Levkas Canal** with:

NOTE - LEVKAS CANAL

The channel is marked along the entire length by lateral buoys which are lit at night. The direction of buoyage changes at the bridge, such that when heading south once through the bridge, red buoys should be kept to starboard. Depths are maintained by dredging and so may be less than charted in places. Navigation is only permitted for small vessels during daylight hours. Before entering the channel, vessels must contact Levkas Port Authority by VHF.

LEVKAS CANAL – NORTHERN ENTRANCE

Depths in the northern entrance to Levkas Canal are less than charted, ranging between 3.5 - 4m in the deeper part of the channel. Yachtsmen are advised to consult **Ionian** by Rod & Lucinda Heikell for full pilotage of the canal entrance. (ILNW 3/18)

G121 (Ed 1/2014) WGS 84

Vasilikí (Plan B)

Insert accompanying block correction centred on 38°37'·55N 20°36'·37E (ILNW 1/18)

Dhioriga Levkádhos (Levkas Canal) (Plan A)

Replace existing note 'NOTE – LEVKAS CANAL' with:

NOTE - LEVKAS CANAL

The channel is marked along the entire length by lateral buoys which are lit at night. The direction of buoyage changes at the bridge, such that when heading south once through the bridge, red buoys should be kept to starboard. Depths are maintained by dredging and so may be less than charted in places. Navigation is only permitted for small vessels during daylight hours. Before entering the channel, vessels must contact Levkas Port Authority by VHF. (ILNW 4/18)

G2 (Ed 8/2013) WGS 84

Izmit Körfezi (Plan B)

Delete dangerous Wk sym. in 40°45'·0N 29°45'·3E (ILNW 103/18)

N. Oinoússa E, N Pasás

Amend duration of Lt to 15s in 38°30'·06N 26°17'·58E (ILNW 104/18)

G21 (Ed 2/2012) WGS 84

Kólpos Thessaloníkis (Plan A)

Works are underway to extend the airport runway. Insert lgd *Works in progress (2017)* centred on 40°31'·5N 22°56'·7E (ILNW 98/18)

G23 (Ed 5/2012) WGS 84

Izmit Körfezi

Delete dangerous Wk sym. in 40°45'·0N 29°45'·3E (ILNW 103/18)

G28 (Ed 11/2013) WGS 84

Alaçati Körfezi

Delete Y special pillar Lt buoy Fl.Y.5s in 38°13'·01N 26°21'·51E (ILNW 90/18)

N. Oinoússa E, N Pasás

Amend duration of Lt to 15s in 38°30'·06N 26°17'·58E (ILNW 104/18)

G3 (Ed 8/2014) WGS 84

Fethiye Körfezi

Amend range of Lt to 10M in 36°43'·6N 28°56'·9E (ILNW 39//18)

Boz Br. NW

Amend range of Lt to 10M in 36°47'·7N 28°35'·8E (ILNW 41/18)

G31 (Ed 3/2014) WGS 84

Nísos Míkonos NE

Insert Y pillar Lt buoy Fl(5)Y.20s in 37°30'·72N 25°27'·43E (ILNW 99/18)

G33 (Ed 5/2014) WGS 84

Notification of new edition

A new February 2018 edition of this chart will shortly be published. In addition to the listed corrections, the latest firing practice areas are shown. Completed harbour development at Livádhi (N. Sérifos) is included. The chart specification has been improved to show coloured light flashes. There has been general updating throughout. (ILNW 68/18)

G36 (Ed 5/2015) WGS 84

Marmaris Limani (Plan C)

Amend Lt Fl.R to Q.R in 36°50'·88N 28°16'·95E (ILNW 10/18)

Fethiye Körfezi (Main chart, Plans B & D)

Amend range of Lt to:

10M in 36°43'·57N 28°57'·01E (Main chart & Plan B)

7M in 36°38'·78N 29°05'·87E (Main chart & Plan D) (ILNW 39/18)

Delik Adasi & Karacaören Ad. (Correction amended - see ILNW 75/18)

Amend:

range of Lt to 10M in 36°47'·77N 28°35'·80E

Lt Bn to Q(6)+LFl.15s3M in 36°32'·31N 29°03'·44E and add racon sym plus assoc. lgd AIS (ILNW 41/18)

Yilancik Ad. SW

Delete Y special con Lt buoy *Wave Recorder* Fl(5)Y.20s in 36°45'·89N 28°25'·56E (ILNW 62/18)

Fethiye (Main chart & Plan D)

Main chart

Replace BY N cardinal Lt Bn VQ.5M AIS with BY N cardinal pillar Lt buoy Q A/S in 36°38'·76N 29°05'·15E

Plan D

Replace BY N cardinal Lt Bn Batikkaya VQ.7m5M AIS with BY N cardinal pillar Lt buoy Q A/S in 36°38'·76N 29°05'·15E (ILNW 63/18)

Karacaören Ad.

Delete racon sym plus assoc. lgd AIS at Lt Bn Q(6)+LFl.15s3M in 36°32'·31N 29°03'·44E (ILNW 75/18)

G37 (Ed 9/2017) WGS 84

Kólpos Irakliou

Insert Y pillar Lt buoy Fl(5)Y.20s in 35°25'·59N 25°04'·35E (ILNW 97/18)

G38 (Ed 4/2015) WGS 84

Kólpos Irakliou

Insert Y pillar Lt buoy Fl(5)Y.20s in 35°25'·59N 25°04'·35E (ILNW 97/18)

E2 (Ed 6/2014) WGS 84

Approaches to Puerto de Los Marmoles (Main chart & Plan K)

Main chart

Amend Lt Fl.G.5s5M to VQ(3)5s5M in 28°57'·9N 13°31'·7W

Plan K

Amend range of Lt VQ(3)5s13m3M to 5M in 28°57'·85N 13°31'·69W (ILNW 116/18)

Approaches to Puerto de Los Marmoles (Main chart & Plan K)

Main chart

Insert Lt Fl.G.5s15M in 28°57'·6N 13°31'·8W

Plan K

Amend Lt to Fl.G.5s20m15M in 28°57'·65N 13°31'·83W (ILNW 156/18)

100 (Ed 6/2012) WGS 84

Ireland SW

Move weather buoy **K2** to 51°13'N 13°17'W.
Update entry in **Weather Buoys & Stations** table to read:
K2 62081 51°13' 13°17' (ILNW 72/18)

CHART 1 (Ed 8/2012) WGS 84
Los Testigos
Amend range of Lt Fl.10s20M to 23M in 11°22'·8N 63°07'·0W (ILNW 13/18)

A25 (Ed 2/2012) WGS 84
St Christopher, Guana Point (Plan D)
Replace W pillar Lt buoy Fl(2)5s with YBY W cardinal can Lt buoy Q(9)15s in 17°14'·52N 62°39'·72W (ILNW 23/18)

Fort Baai (Plan A)
Insert depth:
2·4m in 17°36'·97N 63°15'·14W. Delete depth 4·8m close SW
1·6m in 17°36'·97N 63°15'·12W. Delete depth 3·4m close SW
1·3m in 17°36'·96N 63°15'·08W. Delete depth 3·1m close E (ILNW 117/18)

A30 (Ed 12/2012) WGS 84
Baie de Fort-de-France (Main chart & Plan C)
Amend Lt desc. at R pillar Lt buoy 1 VQ.R to Q.R in 14°34'·48N 61°04'·95W (ILNW 112/18)

Notification of new edition
A new March edition of this chart will shortly be published .In addition to the listed corrections,the chart specification has been improved to show coloured light flashes. The plan of Rade de Forte de France has been reschemed to include coverage of marina L'Etang Z'abricots. There has been general updating throughout. (ILNW 119/18)

B (Ed 9/2016) WGS 84
Golfo de Paria
Insert *Wk* depth 1·2m in 10°29'·1N 61°31'·5W (ILNW 33/18)

Carriacou SE
Insert dangerous underwater Rk sym in 12°23'·7N 61°22'·6W (ILNW 161/18)

B3 (Ed 12/2015) WGS 84
Carriacou SE
Insert dangerous underwater Rk sym in 12°23'·75N 61°22'·64W (ILNW 161/18)

B5 (Ed 9/2006) WGS 84
Notification of new edition
A new February 2018 edition of this chart will shortly be published. In addition to the listed corrections, the chart specification has been improved to show coloured light flashes. There has been general updating throughout. (ILNW 81/18)

B5 (Ed 2/2018) WGS 84
Carriacou SE
Insert dangerous underwater Rk sym in 12°23'·7N 61°22'·6W (ILNW 161/18)

B6 (Ed 5/2009) WGS 84
Golfo de Paria

Insert *Wk* depth 1.2m in 10°29'·1N 61°31'·5W
Delete dangerous wreck sym. in 10°28'·3N 61°32'·1W (ILNW 33/18)

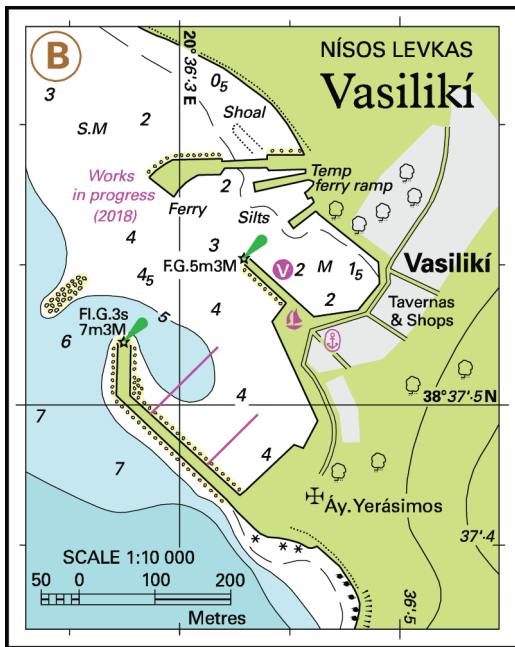
D (Ed 11/2006) WGS 84
Los Testigos, Isla Testigo Grande
Amend range of Lt Fl.10s20M to 23M in 11°22'·8N 63°07'·0W (ILNW 13/18)

D1 (Ed 9/2004) WGS 84
Los Testigos, Isla Testigo Grande
Amend Lt Fl.10s813ft20M to Fl.10s1460ft23M in 11°22'·8N 63°07'·0W (ILNW 13/18)

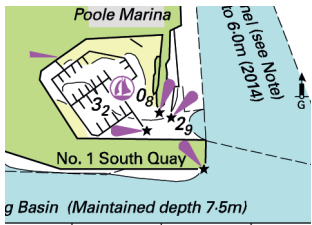
D10 (Ed 5/2003) WGS 84
Golfo de Paria
Insert *Wk* depth 1.2m in 10°29'·1N 61°31'·5W
Delete dangerous wreck sym. in 10°28'·3N 61°32'·1W (ILNW 33/18)

D11 (Ed 7/2001) Undetermined Datum
Los Testigos, Isla Testigo Grande
Amend range of Lt Fl.10s20M to 23M in 11°22'·80N 63°07'·15W (ILNW 13/18)

D14 (Ed 3/2006) Various Datum
Los Testigos, Isla Testigo Grande
Amend range of Lt Fl.10s20M to 23M in 11°22'·80N 63°07'·15W (ILNW 13/18)



Block correction for G121 (Plan B)
ILNW 1/18



Block correction for Y23 (Plan A)
ILNW 130/18