

# Norie's Bulletin of Corrections

No.4 from 1<sup>st</sup> October to 31<sup>st</sup> December 2018

The following new editions of charts have been published since Norie's Bulletin No.3 to 30<sup>th</sup> September 2018 was issued. These supersede previous editions for which corrections will no longer be available. New editions often contain extensive new hydrographic information or are new drawings.

<b>NEW EDITIONS OF EXISTING CHARTS</b>		<i>Scale</i>	<i>Edition date</i>	<i>Year of edition replaced</i>
<b>Chart 100</b>	North Atlantic Ocean Passage Chart	1:7 620 000	Oct-18	2012
<b>C9</b>	Beachy Head to the Isle of Wight	1:110 000	Nov-18	2016
<b>C58</b>	Trevose Head to Bull Point	1:130 000	Oct-18	2013
<b>E2</b>	Islas Canarias	1:600 000	Oct-18	2014
<b>M11</b>	Gibraltar to Cabo de Gata & Morocco	1:440 000	Nov-18	2015
<b>M19</b>	Capo Palinuro to Punta Stilo	1:325 000	Nov-18	2010
<b>FIRST EDITION CHARTS</b>				
<b>3200</b>	Islas Baleares Atlas	various	Oct-18	

## **World Geodetic System 1984 (WGS 84)**

Most Imray charts are based on WGS 84 datum. Each chart listed in this bulletin includes details of the datum on which it is based. Positions referred to in corrections will also refer to the specific datum of the chart and no offset is needed.

The corrections listed in this bulletin can also be viewed and downloaded from our website [www.imray.com](http://www.imray.com)

Bearings are true and from seaward.

## **Imray Laurie Norie & Wilson Ltd**

Wych House The Broadway  
St Ives Cambridgeshire PE27 5BT  
+44 (0)1480 462114

*This bulletin contains corrections for the following charts:*

C1 (Ed 1/2018)	Y7 (Ed 2/2018)	2300+5 (Ed 12/2015)	M45 (Ed 8/2015)
C2 (Ed 7/2016)	Y9 (Ed 3/2018)	2300+6 (Ed 12/2015)	G1 (Ed 3/2017)
C3 (Ed 5/2018)	Y17 (Ed 11/2017)	2300+7 (Ed 12/2015)	G11 (Ed 2/2017)
C5 (Ed 7/2016)	Y18 (Ed 4/2016)	2300+8 (Ed 12/2015)	G12 (Ed 7/2014)
C6 (Ed 7/2018)	Y23 (Ed 7/2016)	2300+9 (Ed 12/2015)	G121 (Ed 1/2014)
C9 (Ed 9/2016)	Y26 (Ed 12/2016)	2400+3 (Ed 10/2015)	G13 (Ed 3/2016)
C9 (Ed 11/2018)	Y30 (Ed 4/2018)	2400+8 (Ed 10/2015)	G14 (Ed 3/2015)
C10 (Ed 2/2018)	Y31 (Ed 4/2018)	2400+11 (Ed 10/2015)	G141 (Ed 1/2014)
C12 (Ed 2/2018)	Y32 (Ed 4/2018)	2400+12 (Ed 10/2015)	G16 (Ed 12/2014)
C15 (Ed 5/2018)	Y35 (Ed 4/2018)	2400+15 (Ed 10/2015)	G2 (Ed 8/2013)
C18 (Ed 1/2016)	Y36 (Ed 4/2018)	2500+1 (Ed 3/2017)	G22 (Ed 5/2018)
C19 (Ed 8/2015)	Y37 (Ed 4/2018)	2500+2 (Ed 3/2017)	G23 (Ed 8/2018)
C20 (Ed 6/2018)	Y38 (Ed 4/2018)	2500+4 (Ed 3/2017)	G31 (Ed 3/2014)
C23 (Ed 8/2017)	Y58 (Ed 7/2016)	2500+8 (Ed 3/2017)	G35 (Ed 4/2016)
C24 (Ed 6/2018)	Y70 (Ed 10/2006)	2510+1 (Ed 5/2015)	G36 (Ed 5/2015)
C25 (Ed 8/2017)	2000+6 (Ed 3/2018)	2510+13 (Ed 5/2015)	G37 (Ed 9/2017)
C26 (Ed 4/2017)	2000+7 (Ed 3/2018)	2600+1 (Ed 12/2016)	G40 (Ed 6/2014)
C27 (Ed 9/2018)	2000+10 (Ed 3/2018)	2600+5 (Ed 12/2016)	E1 (Ed 6/2016)
C28 (Ed 9/2017)	2100+1 (Ed 2/2018)	2600+6 (Ed 12/2016)	E2 (Ed 10/2018)
C29 (Ed 9/2016)	2100+2 (Ed 2/2018)	2600+7 (Ed 12/2016)	E3 (Ed 3/2011)
C30 (Ed 5/2017)	2100+3 (Ed 2/2018)	2600+11 (Ed 12/2016)	1 (Ed 8/2012)
C31 (Ed 11/2014)	2100+4 (Ed 2/2018)	2700+1 (Ed 5/2016)	A (Ed 9/2006)
C32 (Ed 9/2017)	2100+10 (Ed 2/2018)	2700+2 (Ed 5/2016)	A2 (Ed 3/2016)
C33A (Ed 8/2016)	2100+12 (Ed 2/2018)	2700+3 (Ed 5/2016)	A23 (Ed 1/2013)
C36 (Ed 1/2015)	2110+1 (Ed 1/2017)	2700+4 (Ed 5/2016)	A231 (Ed 10/2016)
C37 (Ed 6/2017)	2110+2 (Ed 1/2017)	2700+5 (Ed 5/2016)	A232 (Ed 10/2016)
C38 (Ed 4/2016)	2110+3 (Ed 1/2017)	2700+6 (Ed 5/2016)	A233 (Ed 10/2016)
C39 (Ed 8/2017)	2110+4 (Ed 1/2017)	2700+10 (Ed 5/2016)	A3 (Ed 10/2012)
C40 (Ed 5/2014)	2110+5 (Ed 1/2017)	2700+11 (Ed 5/2016)	A4 (Ed 7/2006)
C41 (Ed 6/2017)	2110+9 (Ed 1/2017)	2900+7 (Ed 4/2013)	A24 (Ed 6/2016)
C42 (Ed 9/2017)	2110+10 (Ed 1/2017)	3200 (Ed 10/2018)	A25 (Ed 2/2012)
C43 (Ed 2/2014)	2110+11 (Ed 1/2017)	M3 (Ed 5/2018)	A26 (Ed 11/2006)
C48 (Ed 4/2015)	2120 (Ed 2/2018)	M10 (Ed 3/2011)	A27 (Ed 12/2015)
C50 (Ed 3/2017)	2130 (Ed 3/2018)	M11 (Ed 7/2015)	A271 (Ed 6/2017)
C51 (Ed 9/2015)	2140 (Ed 2/2018)	M12 (Ed 4/2018)	A28 (Ed 1/2017)
C52 (Ed 9/2015)	2150 (Ed 3/2018)	M13 (Ed 1/2016)	A281 (Ed 11/2006)
C54 (Ed 8/2018)	2160 (Ed 3/2018)	M14 (Ed 4/2017)	A29 (Ed 9/2006)
C55 (Ed 3/2015)	2200+1 (Ed 4/2018)	M15 (Ed 4/2015)	A30 (Ed 3/2018)
C56 (Ed 6/2017)	2200+2 (Ed 4/2018)	M16 (Ed 7/2016)	A301 (Ed 12/2006)
C57 (Ed 4/2017)	2200+3 (Ed 4/2018)	M17 (Ed 4/2017)	B (Ed 9/2016)
C59 (Ed 9/2015)	2200+5 (Ed 4/2018)	M19 (Ed 11/2010)	B1 (Ed 7/2013)
C60 (Ed 9/2017)	2200+6 (Ed 4/2018)	M20 (Ed 3/2011)	B2 (Ed 5/2018)
C61 (Ed 3/2016)	2200+7 (Ed 4/2018)	M21 (Ed 1/2011)	B3 (Ed 12/2015)
C62 (Ed 7/2016)	2200+8 (Ed 4/2018)	M22 (Ed 7/2018)	B30 (Ed 2/2017)
C63 (Ed 9/2016)	2200+10 (Ed 4/2018)	M24 (Ed 12/2014)	B31 (Ed 10/2015)
C65 (Ed 7/2016)	2200+11 (Ed 4/2018)	M25 (Ed 6/2017)	B311 (Ed 12/2017)
C66 (Ed 4/2016)	2300+1 (Ed 12/2015)	M26 (Ed 6/2017)	B32 (Ed 9/2017)
C68 (Ed 7/2017)	2300+2 (Ed 12/2015)	M32 (Ed 9/2015)	B4 (Ed 4/2009)
C70 (Ed 4/2016)	2300+3 (Ed 12/2015)	M36 (Ed 7/2016)	B5 (Ed 2/2018)
C80 (Ed 5/2018)	2300+4 (Ed 12/2015)	M40 (Ed 6/2014)	B6 (Ed 5/2009)

C1 (Ed 1/2018) WGS 84

**Yantlet Channel**

Delete YB S card pillar Lt buoy **Oikos** Q(6)+LFI.15s in 51°30'·34N 0°33'·62E (ILNW 524/18)

**Knock John Channel**

Replace Whis with Bell at RW safe water pillar Lt buoy **Knob** in 51°30'·70N 1°04'·27E (ILNW 678/18)

**Maplin Sands E**

Delete starboard topmark at G con Lt buoy **Maplin** in 51°33'·71N 1°01'·38E (ILNW 737/18)

C2 (Ed 7/2016) WGS 84

**Blackfriars**

Insert minor Lt star in:

51°30'·56N 0°06'·28W

51°30'·56N 0°06'·19W (ILNW 517/18)

**Lambeth Reach**

Insert depth 0·2m in 51°29'·31N 0°07'·52W (ILNW 518/18)

**Fulham Railway Bridge**

Delete minor Lt star in:

51°27'·98N 0°12'·57W

51°27'·97N 0°12'·56W

51°27'·93N 0°12'·60W

51°27'·92N 0°12'·58W (ILNW 519/18)

**Yantlet Channel**

Works to construct the new Oikos jetty have now been completed.

Insert jetty, line, joining:

51°30'·52N 0°33'·65E (existing jetty)

51°30'·38N 0°33'·59E

and

51°30'·40N 0°33'·47E

51°30'·38N 0°33'·59E

51°30'·38N 0°33'·76E

The jetty is marked by 3 minor G Lts. Entry is restricted around the structure.

Delete:

YB S card pillar Lt buoy **Oikos** Q(6)+LFI.15s in 51°30'·34N 0°33'·62E

minor G Lts in:

51°30'·51N 0°33'·57E

51°30'·50N 0°33'·64E (ILNW 524/18)

**Tower Bridge (Plan D)**

Delete fog signal Horn(10)20s & assoc. sym in 51°30'·35N 0°04'·51W (ILNW 632/18)

**Gallions Reach**

Insert G con Lt buoy **Gallions** FI.G.3s in 51°29'·97N 0°04'·45E (ILNW 727/18)

C3 (Ed 5/2018) WGS 84

**Needles Channel**

Replace drying height -1·2m with drying height -2·7m in 50°41'·68N 1°35'·03W (ILNW 515/18)

**Approaches to Portsmouth**

Insert depth 0·3m in 50°46'·58N 1°06'·20W. Delete depth 0·6m close NW (ILNW 516/18)

**Southampton Water**

Amend Lt desc. at G starboard con buoy **Moorhead** Q.G to Fl.G.5s in 50°52'·55N 1°22'·90W (ILNW 578/18)

#### **Thorn Channel**

Delete fog signal, Bell at cardinal pillar Lt buoy:

**Calshot** in 50°48'·43N 1°17'·04W

**W Bramble** in 50°47'·20N 1°18'·65W (ILNW 643/18)

#### **Southampton Water**

Delete Lt mooring buoy Fl.Y.4s in 50°51'·29N 1°20'·55W (ILNW 692/18)

C5 (Ed 7/2016) WGS 84

#### **Approaches to Tor Bay**

Amend label at BYB N cardinal Lt buoy Q(3)10s (*4 buoys*) to (*2 buoys*) in 50°28'·09N 3°24'·62W plus delete racon sym. and assoc. lgd Racon(T). The east and west cardinal buoys have been removed.

The north and south cardinal buoys remain. (ILNW 553/18)

#### **Start Point**

Amend Lt Fl(3)10s62m25M&F.R.9M Horn(1)60s to Fl(3)10s62m18M&F.R.9M Horn(1)30s in 50°13'·35N 3°38'·53W (ILNW 657/18)

#### **Teignmouth Harbour (Plan D)**

Insert:

G con Lt buoy **Spratt Sands Inner** Fl.G.2s in 50°32'·37N 3°29'·90W

R can Lt buoy **Ness Rocks** Fl.R.2s in 50°32'·34N 3°29'·79W (ILNW 699/18)

C6 (Ed 7/2018) WGS 84

#### **Carrick Roads (Plan H)**

Amend Lt desc. at G con Lt buoy The Vilt Fl(4)G.15s to Fl.G.4s in 50°09'·99N 5°02'·27W (ILNW 520/18)

#### **Falmouth Harbour (Plan H)**

Insert G con Lt buoy Q.G in 50°09'·68N 5°04'·20W

Move R can Lt buoy Q.R in 50°09'·75N 5°04'·34W to 50°09'·75N 5°04'·31W

The buoys in the Penryn River are now lit as follows:

Add Lt desc. at R can buoy:

Fl(5)R.10s in 50°09'·91N 5°04'·72W

Fl(4)R.10s in 50°09'·87N 5°04'·56W

Fl(3)R.10s in 50°09'·83N 5°04'·47W

Fl(2)R.10s in 50°09'·80N 5°04'·42W

Add Lt desc. Fl(3)G.10s at G con buoy in 50°09'·87N 5°04'·49W (ILNW 540/18)

#### **Eddystone Rocks NE**

Insert Y pillar Lt buoy Fl(5)Y.20s in 50°15'·25N 4°12'·85W (ILNW 631/18)

#### **Penryn River (Plan H)**

Insert G con Lt buoy Fl(2)G.10s in 50°09'·81N 5°04'·37W (ILNW 666/18)

C9 (Ed 9/2016) WGS 84

#### **Rampion Offshore Wind Farm**

Construction work on the Rampion Offshore wind farm is now complete.

Insert accompanying block correction centred on 50°40'·80N 0°16'·60W (ILNW 513/18)

#### **Approaches to Portsmouth (Main chart & Plan A)**

Replace depth 0·6m with depth 0·3m in 50°46'·58N 1°06'·20W (ILNW 516/18)

### Notification of new edition

A new November 2018 edition of this chart will shortly be published. In addition to the listed corrections the chart specification has been improved to show coloured light flashes. Depths have been updated from the latest surveys. There has been general updating throughout. (ILNW 637/18)

C9 (Ed 11/2018) WGS 84

#### **Bognor Regis S & The Looe**

Insert depth:

2.6m in 50°45'·52N 0°39'·01W. Delete depth 4.1m close N

1.7m in 50°40'·44N 0°45'·78W (ILNW 728/18)

C10 (Ed 2/2018) WGS 84

#### **Cap de Carteret**

Delete racon sym. plus assoc. lgd AIS at Lt FI(2+1)15s26M in 49°22'·4N 1°48'·4W (ILNW 607/18)

#### **Automatic Identification Systems**

Delete racon sym. & assoc. lgd AIS at Lt:

**Gros du Raz** FI.5s48m23M in 49°43'·4N 1°57'·3W

FI(3)WR.24/20M in 49°40'·5N 1°38'·9W

**Cap Levi** FI.R.5s36m17M in 49°41'·8N 1°28'·4W

**LTHO** FI(2)10s72m25M in 49°41'·8N 1°16'·00W (ILNW 626/18)

#### **Off Casquets TSS**

Delete Y special pillar Lt buoy **East Channel** FI.Y.5s & assoc. racon, Racon(T) in 49°58'·7N 2°29'·0W (ILNW 654/18)

#### **Start Point**

Amend Lt FI(3)10s62m25M&F.R.55m9M Horn(1)60s to FI(3)10s62m18M&F.R.55m9M Horn(1)30s in 50°13'·3N 3°38'·4W (ILNW 657/18)

C12 (Ed 2/2018) WGS 84

#### **Rampion Offshore Wind Farm**

Construction work on the Rampion Offshore wind farm is now complete.

Insert accompanying block correction centred on 50°40'·15N 0°17'·60W (ILNW 513/18)

#### **Cap de Carteret**

Delete racon sym. plus assoc. lgd AIS at Lt FI(2+1)15s26M in 49°22'·4N 1°48'·4W (ILNW 607/18)

#### **Vergoyer**

Insert racon sym. plus assoc. lgd AIS at BYB E cardinal pillar Lt buoy **Vergoyer Est** VQ(3)5s in 50°35'·75N 1°19'·67E (ILNW 608/18)

#### **Automatic Identification Systems**

Delete racon sym. & assoc. lgd AIS at Lt:

FI.5s48m23M in 49°43'·4N 1°57'·3W

**Fort de l'Ouest** Lt in 49°40'·5N 1°38'·9W

**LTHO**. FI.R.5s36m17M in 49°41'·8N 1°28'·4W

**LTHO** FI(2)10s72m25M in 49°41'·8N 1°16'·00W (ILNW 626/18)

#### **Off Casquets TSS**

Delete Y special pillar Lt buoy **East Channel** FI.Y.5s & assoc. racon, Racon(T) in 49°58'·7N 2°29'·0W (ILNW 654/18)

#### **Cap de la Hague W**

Delete dangerline plus assoc. lgd ODAS in 49°42'·7N 2°00'·2W (ILNW 683/18)

C15 (Ed 5/2018) WGS 84

### **Approaches to Portsmouth**

Replace depth 0.6m with depth 0.3m in 50°46'·58N 1°06'·20W (ILNW 516/18)

### **Beaulieu River (Plan G)**

Insert drying height:

-1.3m in 50°47'·98N 1°25'·23W

-0.2m in 50°46'·95N 1°21'·80W. Extend 0m contour E to enclose. (ILNW 525/18)

### **Southampton Water**

Amend Lt desc. at G starboard con buoy **Moorhead** Q.G to Fl.G.5s in 50°52'·55N 1°22'·90W (ILNW 578/18)

### **Thorn Channel**

Delete fog signal:

Bell(1)30s at BY N cardinal pillar Lt buoy **Calshot** in 50°48'·42N 1°17'·03W

Bell at YBY W cardinal pillar Lt buoy **W Bramble** in 50°47'·20N 1°18'·65W (ILNW 643/18)

### **River Hamble (Plan A)**

Replace starboard topmark with port topmark at Lt Bn **No 8** in 50°50'·73N, 1°18'·71W (ILNW 677/18)

### **Southampton Water**

Delete Lt mooring buoy *Hamble Cliff* in 50°51'·29N 1°20'·55W (ILNW 692/18)

### **Portsmouth Harbour**

Insert *Obstn (Broken Piles)*, drying height -3.3m enclosed by dangerline in 50°49'·10N 1°08'·13W (ILNW 728/18)

C18 (Ed 1/2016) WGS 84

### **Îles de Glénan**

Amend range of Lt Fl.R.21M to 19M in 47°43'·2N 3°57'·3W. Q Lt & AIS remain unchanged. (ILNW 544/18)

### **Automatic Identification Systems**

Delete racon sym. & assoc. lgd AIS at Lt:

**Île de Sein** in 48°02'·6N 4°52'·0W

Ar Men in 48°03'·1N 4°59'·9W (ILNW 558/18)

### **Fontán NW**

Delete dangerous Wk sym in 43°24'·3N 8°16'·8W (ILNW 588/18)

### **Automatic Identification Systems**

Delete racon sym. & assoc. lgd AIS at Lt:

Fl.23M in 49°43'·3N 1°57'·1W

Fl(3)WR.24/20M in 49°40'·5N 1°38'·9W

Fl.R.17M in 49°41'·7N 1°28'·2W (ILNW 626/18)

### **Santander NW**

Delete Lt Fl(5)Y.20s in 43°34'·3N 4°07'·7W (ILNW 634/18)

### **Off Casquets TSS**

Delete Y special pillar Lt buoy **E Channel** Fl.Y.5s & assoc. racon, Racon(T) in 49°58'·7N 2°28'·7W (ILNW 654/18)

### **Start Point**

Amend range of Lt Fl(3)25M to 18M in 50°13'·3N 3°38'·4W. F.R.9M Lt remains unchanged. (ILNW 657/18)

### **Plateau du Four SW**

Insert wind turbine sym. *Floating turbine* FI(3)Y.15s10M plus racon sym. and assoc. lgd AIS in 47°14'·4N 2°46'·5W. Delete Y special pillar Lt buoy and racon sym. ODAS FI(5)Y AIS close SW (ILNW 684/18)

C19 (Ed 8/2015) WGS 84

**Ensenada de Carreira (Plan B)**

Delete Y spec. spher. Lt buoy FI.Y.2s in 42°10'·66N 8°50'·19W (ILNW 573/18)

**Morocco, N coast**

Amend Lt:

FI(3)12s14M to FI(3)G.12s12M in 35°47'·5N 5°47'·6W

Iso.G.10M&Iso.R.4M in 35°45'·0N 5°20'·3W (ILNW 686/18)

**Morocco, N coast (Plan K)**

Amend Lt:

FI(3)12s20m14M to FI(3)G.12s20m12M in 35°47'·46N 5°47'·60W

Iso.G.4s11m4M to Iso.G.4s11m10M in 35°45'·15N 5°20'·26W (ILNW 686/18)

C20 (Ed 6/2018) WGS 84

**Casablanca**

Delete Lt AeroUQ(2)11s17M in 33°33'·8N 7°40'·0W (ILNW 630/18)

**Kénitra** (*correction amended see ILNW 688/18*)

Amend Lt LdgOc(3)12s16M&DirF.G.12M to LdgOc(3)12s16M&Oc(3)12M in 34°15'·7N 6°39'·8W (ILNW 659/18)

**Kénitra**

Amend Lt LdgOc(3)12s16M&DirF.G.12M to LdgOc(3)12s16M&Oc(3)5M in 34°15'·7N 6°39'·8W (ILNW 688/18)

**Arquipélago dos Açores, São Miguel**

Amend Lt Pta do Arnel FI.5s25M to FI(2)10s19M in 37°49'·5N 25°08'·2W (ILNW 703/18)

C23 (Ed 8/2017) WGS 84

**Kinnaird Head N**

Insert dangerous Wk sym. in 57°43'·27N 1°59'·16W (ILNW 555/18)

**Aberdeen N**

Delete Y spher Lt buoy **WVR01** FI(5)Y.20s in 57°13'·46N 1°59'·90W (ILNW 567/18)

**Aberdeen Offshore Wind Farm**

Construction works on the Aberdeen Offshore Wind Farm are now complete. Delete lgd *under const'n (2017) (buoyed)*. (ILNW 593/18)

**Montrose (Plan N)**

Move R can Lt buoy **Scurdie** Q.R in 56°42'·14N 2°25'·28W to 56°42'·12N 2°25'·31W (ILNW 679/18)

C24 (Ed 6/2018) WGS 84

**Blyth E**

Construction work on the Blyth Demonstrator wind farm is now complete.

Delete lgd *under construction (2017) (buoyed)* centred on 55°07'·30N 1°21'·93W (ILNW 554/18)

**Hartlepool (Plan L)**

Insert:

depth 2·6m in 54°40'·79N 1°10'·26W

drying height -0·3m in 54°40'·53N 1°10'·48W (ILNW 624/18)

C25 (Ed 8/2017) WGS 84

**Dudgeon Wind Farm S**

Insert YB S cardinal pillar Lt buoy VQ(6)+LFI.10s in 53°12'·5N 1°25'·6E (ILNW 570/18)

**Holm Channel**

Move YB S card pillar Lt buoy **S Corton** in 52°32'·90N 1°48'·98E to 52°33'·24N 1°48'·47E (ILNW 655/18)

C26 (Ed 4/2017) WGS 84

**Westerems**

Move RW safe water pillar buoy **Westerems** Iso.4s plus racon sym. & assoc. lgd AIS in 53°36'·93N 6°19'·41E to 53°36'·95N 6°17'·74E (ILNW 528/18)

**Veja Mate Wind Farm W**

Work has begun on the construction of a Wind Farm adjacent to Veja Mate Wind Farm.

Insert restricted area joining:

54°20'·6N 5°49'·3E (existing limit)

54°18'·2N 5°43'·9E

54°16'·2N 5°48'·5E

54°16'·3N 5°49'·2E (existing limit)

Add associated lgd *Wind Farm under construction (buoyed)*. (ILNW 535/18)

**Borkum Riffgrund N**

Insert racon sym. and assoc. lgd AIS at platform **BORWIN GAMMA** in 54°23'·3N 6°22'·8E. Delete label *under const'n*. (ILNW 536/18)

**Mittelhever W**

Move RW safe water pillar Lt buoy **Hever** Iso.4s Whis in 54°20'·4N 8°18'·9E to 54°21'·5N 8°18'·8E (ILNW 537/18)

**Nordsee Ost Wind Farm**

Amend lit platform **HelWin alpha** Oc.3sY.16s to **HelWin alpha HelWin beta** 2Oc(3)Y.16s in 54°27'·1N 7°44'·4E. AIS is unchanged. (ILNW 559/18)

**Bornrif W**

Insert dangerous Wk sym. in 53°29'·34N 5°31'·64E (ILNW 562/18)

**Spiekerroog**

Move RW safe water pillar Lt buoy **Otzumer Balje** Iso.4s in 53°48'·24N 7°37'·41E to 53°48'·54N 7°40'·35E (ILNW 586/18)

**Brunsbüttel (Plan J)**

Amend Lt 2F.G(vert)10m7M to 2F.G(vert)7m7M&Iso.2s17m in 53°53'·25N 9°08'·07E (ILNW 724/18)

C27 (Ed 9/2018) WGS 84

**Kincardine Bridge**

Amend vertical clearance height 6·5m to 7·8m centred on 56°03'·87N 3°43'·44W (ILNW 730/18)

C28 (Ed 9/2017) WGS 84

**Lowestoft Harbour (Plan H)**

The pontoons have been reconfigured in Hamilton Dock. Two new pontoons emanate from the W quay. Insert Lt FI.Y.2·5s in:

52°28'·58N 1°45'·45E (S pontoon head)

52°28'·59N 1°45'·47E (N pontoon head)



One pontoon from the N quay has been removed. Delete Lt Fl.Y.4s in 52°28'·58N 1°45'·46E (W pontoon head) (ILNW 583/18)

C29 (Ed 9/2016) WGS 84

**Dudgeon Wind Farm S**

Insert YB S cardinal pillar Lt buoy VQ(6)+LFl.10s in 53°12'·5N 1°25'·6E (ILNW 570/18)

C30 (Ed 5/2017) WGS 84

**Dunkerque N**

Delete Y special pillar Lt buoy **DY4** Fl(4)Y.20s in 51°06'·88N 2°23'·11E (ILNW 587/18)

**Wind Farm Borssele**

Insert lit platform sym **BSA** Mo(U)15s plus fog signal Horn Mo(U)30s in 51°42'·00N 3°03'·40E (ILNW 594/18)

**Zeebrugge (Plan E)**

Delete Lt:

F.R in 51°20'·50N 3°12'·73E

F.G in 51°20'·51N 3°12'·75E (ILNW 598/18)

**Nieuwpoort Bank NW & Stroombank**

Insert lgd *Historic Wk* (see Note) to Wk in:

51°12'·98N 2°37'·63E

51°13'·79N 2°52'·93E (ILNW 599/18)

**Nieuwpoort (Plan B)**

Insert lgd *Works in progress (2018)* centred on 51°09'·16N 2°43'·58E (ILNW 633/18)

**Dunkerque Port Ouest**

Delete Lt Dirlso.WRG.4s13m14-11M in 51°00'·06N 2°10'·73E (ILNW 647/18)

**Rentel Wind Farm**

Construction work on the Rentel Wind Farm is now complete. Delete lgd (*under construction 2017*) (*buoyed*) centred on 51°35'·7N 2°56'·7E. Yachtsmen are advised that entry is prohibited throughout the wind farm. (ILNW 675/18)

**Fisherman's Gat**

Replace N cardinal topmark with W cardinal topmark at YBY pillar Lt buoy **No.8** in 51°36'·36N 1°20'·35E (ILNW 693/18)

**Dunkerque Port Ouest N**

Delete Y special con Lt buoy Fl.Y.2·5s in:

51°05'·90N 2°09'·53E

51°04'·45N 2°11'·15E (ILNW 700/18)

C31 (Ed 11/2014) WGS 84

**Rampion Offshore Wind Farm**

Construction work on the Rampion Offshore wind farm is now complete.

Insert limit of wind farm, pecked line, joining:

50°42'·27N 0°14'·00W (W border)

50°42'·34N 0°13'·52W

50°42'·07N 0°12'·29W

50°40'·03N 0°11'·66W

50°39'·13N 0°13'·08W

50°38'·98N 0°14'·00W (W border) (ILNW 513/18)

**Beachy Head**

Amend range of Lt FI(2)20s31m8M to 16M in 50°44'·03N 0°14'·49E (ILNW 569/18)

### **Vergoyer**

Insert racon sym. plus assoc. lgd A/S at BYB E cardinal pillar Lt buoy **Vergoyer Est** VQ(3)5s in 50°35'·75N 1°19'·67E (ILNW 608/18)

C32 (Ed 9/2017) WGS 84

### **Baie de Seine**

Insert label *Measuring Instruments (see Note)* centred on:

49°28'·68N 0°14'·30W

49°24'·23N 0°27'·53W

Between 15 March and 15 November fishing, dredging, trawling, and anchoring are prohibited in these areas. (ILNW 530/18)

### **Automatic Identification Systems (Main chart & Plan M)**

Delete racon sym & assoc. lgd AIS at Lt:

**Gros du Raz** FI.5s48m23M in 49°43'·31N 1°57'·27W (Main chart)

FI(3)WR.15s19m24/20M in 49°40'·44N 1°38'·80W (Main chart & Plan M)

**LIGHTHOUSE** FI.R.5s36m17M in 49°41'·75N 1°28'·39W (Main chart)

**LIGHTHOUSE** FI(2)10s72m25M in 49°41'·8N 1°16'·00W (Main chart)  
(ILNW 626/18)

### **Baie du Grand Vey (Plan J)**

Move G starboard con buoy **No1** FI.G.2·5s in 49°23'·91N 1°08'·45W to 49°24'·29N 1°08'·57W (ILNW 670/18)

### **Baie du Grand Vey (Plan J)**

Amend Lt desc at buoy:

**No1** FI.G.2·5s to FI.G.4s in 49°24'·29N 1°08'·57W

**No2** FI.R.2·5s to FI.R.4s in 49°23'·87N 1°08'·33W (ILNW 701/18)

C33A (Ed 8/2016) WGS 84

### **Cap de Carteret (Main chart & Plan J)**

Delete racon sym. plus assoc. lgd AIS at Lt FI(2+1)15s81m26M in 49°22'·41N 1°48'·41W (ILNW 607/18)

### **Automatic Identification Systems**

Delete racon sym. & assoc. lgd AIS at Lt:

**Gros du Raz** FI.5s48m23M in 49°43'·31N 1°57'·27W

**Fort de l'Ouest** Lt in 49°40'·44N 1°38'·80W

**CAP LÉVI** FI.R.5s36m17M in 49°41'·69N 1°28'·39W (ILNW 626/18)

### **Cap de la Hague SW**

Delete dangerline joining:

49°42'·89N 2°00'·29W

49°42'·89N 1°59'·97W

49°42'·55N 1°59'·97W

49°42'·55N 2°00'·29W

plus assoc. lgd ODAS. (ILNW 683/18)

C36 (Ed 1/2015) WGS 84

### **Automatic Identification Systems**

Delete racon sym. & assoc. lgd AIS at Lt:

**Sein** in 48°02'·62N 4°52'·01W

**Ar Men** in 48°03'·01N 4°59'·87W (ILNW 558/18)

### **Avant Goulet de Brest**

Delete BRB isolated danger pillar Lt buoy **Swansea Vale** Fl(2)6s plus assoc. fog signal Whis and racon sym plus lgd AIS in 48°18'·28N 4°38'·84W (ILNW 606/18)

C37 (Ed 6/2017) WGS 84

**Automatic Identification Systems (Main chart & Plan A)**

Delete racon sym. & assoc. lgd AIS at Lt:

**Sein** in 48°02'·62N 4°52'·01W (Main chart & Plan A)

**Ar Men** in 48°03'·01N 4°59'·87W (Main chart) (ILNW 558/18)

C38 (Ed 4/2016) WGS 84

**Île de Penfret (Main chart & Plan F)**

Amend Lt **Penfret** Fl.R.5s36m21M to Fl.R.6s36m19M (Fl.R.6s19M main chart) in 47°43'·27N 3°57'·18W. Q Lt & AIS remain unchanged. (ILNW 544/18)

C39 (Ed 8/2017) WGS 84

**Sauzon (Main chart & Plan A)**

Amend range of Lt:

4M to 5M in 47°22'·49N 3°13'·04W

4M to 5M in 47°22'·45N 3°13'·00W

5M to 2M in 47°22'·37N 3°13'·13W (ILNW 529/18)

**Plateau du Four SW**

Replace no fishing sym. and no anchoring sym. with wind turbine sym. *Floating turbine*

Fl(3)Y.15s10M (R Lt) plus racon sym. and assoc. lgd AIS in 47°14'·4N 2°46'·5W. Yachtsmen are advised that entry to the restricted area is prohibited. (ILNW 684/18)

C40 (Ed 5/2014) WGS 84

**Goulet de Fromentine**

Move RW safe water spher. Lt buoy **Fromentine** LFl.10s in 46°53'·03N 2°11'·63W to 46°53'·38N 2°11'·90W (ILNW 545/18)

**Goulet de Fromentine (Main chart & Plan E)**

Amend Lt desc. at R port Lt Bn Tr **Milieu** Fl(4)R.15s5M to Fl(2)R.6s2M in 46°53'·59N 2°09'·62W (ILNW 546/18)

C41 (Ed 6/2017) WGS 84

**Coureau d'Oléron**

Insert Lt Iso.WRG in 45°51'·18N 1°10'·77W

Delete:

2 Lts in 45°51'·41N 1°11'·15W

Lt F in 45°51'·08N 1°10'·59W (ILNW 579/18)

**Rade de la Pallice (Plan F)**

Insert Lt superbuoy with x topmark Q.Or *Wave Energy* in 46°10'·04N 1°14'·06W. Entry is prohibited within 100m of the superbuoy (ILNW 646/18)

C42 (Ed 9/2017) WGS 84

**Santander NW**

Delete Y *ODAS* Lt buoy Fl(5)Y.20s in 43°29'·21N 3°53'·02W (ILNW 600/18)

**Santander NW**

Delete Y *ODAS* Lt buoy Fl(5)Y.20s2M in 43°29'·20N 3°27'·34W (ILNW 625/18)

**Santander NW**

Delete lit wind turbine sym FI(5)Y.20s in:  
43°30'·49N 3°52'·95W  
43°30'·77N 3°52'·25W (ILNW 628/18)

**Santander NW**

Delete lit wind turbine sym FI(5)Y.20s in 43°34'·12N 4°07'·79W (ILNW 634/18)

**Santander (Plan I)**

Insert Tr sym plus assoc. lgd Ru in 43°26'·65N 3°48'·52W

Move Lt:

Q.G in 43°26'·97N 3°48'·86W to 43°26'·96N 3°48'·87W. This Lt marks the head of a new RoRo quay  
FI.Y.2·5s in 43°26'·52N 3°48'·96W to 43°26'·52N 3°48'·99W (ILNW 645/18)

**Abra de Bilbao (Plan F)**

Insert Y special pillar Lt buoy FI.Y.3s in 43°20'·87N 3°03'·19W

Move Y special pillar Lt buoy FI.Y.3s in 43°21'·20N 3°03'·01W to 43°21'·19N 3°03'·12W

Delete Y special pillar Lt buoy FI.Y.3s in 43°21'·01N 3°03'·00W (ILNW 725/18)

C43 (Ed 2/2014) WGS 84

**Gijón (Plan C)**

Move Lt Q.5M in 43°34'·94N 5°41'·61W to 43°34'·95N 5°41'·55W (ILNW 563/18)

**Fontán NW (Main chart & Plan H)**

Delete dangerous Wk sym in 43°24'·30N 8°16'·76W (ILNW 588/18)

**Santander NW**

Delete Y *ODAS* Lt buoy FI(5)Y.20s2M in 43°29'·21N 3°53'·02W (ILNW 600/18)

**Avilés W**

Delete fog signal SirenMo(N)30s at Lt FI(2)12s15M in 43°34'·21N 6°04'·63W (ILNW 627/18)

**Santander NW**

Delete lit wind turbine sym:

FI(5)Y.20s3M & assoc. limit of restricted area in 43°30'·49N 3°52'·95W

FI(5)Y.20s in 43°30'·77N 3°52'·25W (ILNW 628/18)

**Santander (Plan A)**

Insert Tr sym plus assoc. lgd Ru in 43°26'·65N 3°48'·52W

Move Lt:

Q.G in 43°26'·97N 3°48'·86W to 43°26'·96N 3°48'·87W. This Lt marks the head of a new RoRo quay  
FI.Y.2·5s in 43°26'·52N 3°48'·96W to 43°26'·52N 3°48'·99W (Dn) (ILNW 645/18)

C48 (Ed 4/2015) WGS 84

**Ensenada de Carreira (Plans K & L)**

Delete Y spec. spher. Lt buoy FI.Y.2s in 42°10'·66N 8°50'·19W (ILNW 573/18)

**Fontán NW**

Delete dangerous Wk sym in 43°24'·30N 8°16'·76W (ILNW 588/18)

**Rio Douro (Plan O)**

Buoyage in the Rio Douro has been amended. Yachtsmen are advised to navigate with caution.  
Further details will be included once available. (ILNW 636/18)

**Vilagarcía (Plan H)**

Yachtsmen are advised that depths are no longer maintained in the approaches to, and port of,  
Vilagarcía de Arousa.

Delete label:

*Maintained 9m* centred on 42°36'·11N 8°46'·95W

13m centred on 42°35'·97N 8°46'·78W

11m centred on 42°35'·74N 8°46'·78W

Yachtsmen are advised to navigate with caution and consult the local port authority for further information. (ILNW 706/18)

#### **Ría de Pontevedra**

Replace Wk depth 7m with dangerous Wk sym in 42°24'·5N 8°52'·2W (ILNW 713/18)

#### **Punta Faxilda S (Plan J)**

Insert dangerous Wk sym in 42°24'·46N 8°52'·18W. Delete Wk depth 7m close SW (ILNW 713/18)

C50 (Ed 3/2017) WGS 84

#### **Morocco, N coast (Main chart & Plan Q)**

Amend Lt FI(3)12s14M to FI(3)G.12s12M in 35°47'·4N 5°47'·6W (ILNW 686/18)

#### **Morocco, N coast (Plan Q)**

Amend Lt Iso.G.4s11m4M to Iso.G.4s11m10M in 35°45'·15N 5°20'·26W (ILNW 686/18)

#### **Mazagón (Plan G)**

Insert Y special spar Lt buoy FI.Y.5s in:

37°07'·90N 6°50'·25W

37°07'·94N 6°50'·17W (ILNW 702/18)

C51 (Ed 9/2015) WGS 84

#### **Cardigan Bay**

Insert Y spher. Lt buoy ODAS FI(5)Y.20s in 56°26'·02N 4°47'·99W (ILNW 561/18)

#### **Thorn Point N (Plan K)**

Insert lgd *Scientific Instruments* centred on 51°41'·61N 5°06'·41W (ILNW 656/18)

C52 (Ed 9/2015) WGS 84

#### **Holyhead Deep**

Amend Y superbuoy name **F** to Lt desc. FI(4)Y.15s in 53°17'·80N 4°47'·76W (ILNW 521/18)

#### **Holyhead Deep**

Insert racon sym & assoc. lgd A/S at Y Lt superbuoy FI(4)Y.15s in 53°17'·80N 4°47'·76W (ILNW 566/18)

#### **Holy Island SW**

Insert Y special pillar Lt buoy FI(5)Y.20s in 53°15'·48N 4°43'·26W (ILNW 568/18)

#### **Caernarfon Bar (Plan G)**

Move Lt buoy:

**C1** in 53°06'·96N 4°24'·47W to 53°07'·06N 4°24'·52W

**C3** in 53°07'·13N 4°23'·91W to 53°07'·17N 4°23'·95W plus amend Lt desc. Q.G to FI(3)G.10s

**C6** in 53°07'·21N 4°21'·95W to 53°07'·08N 4°21'·74W (ILNW 581/18)

#### **Holyhead (Plan C)**

Holyhead Marina has suffered extensive storm damage and there are numerous obstructions in the area. The jetties are being reconstructed.

Delete Lt 2F.R(vert) in 53°19'·32N 4°38'·64W.

Yachtsmen are advised to contact the local Harbour Authority for further information. (ILNW 596/18)

#### **Holyhead Bay**

Insert Y special spher. Lt buoy FI(5)Y.20s (2 buoys) in 53°22'·37N 4°41'·84W (ILNW 642/18)

C54 (Ed 8/2018) WGS 84

**Galway Bay**

An Ocean Energy Test Site has been established in Galway Bay.

Insert limit of restricted area joining:

53°13'·90N 9°16'·15W

53°13'·90N 9°15'·55W

53°13'·60N 9°15'·55W

53°13'·60N 9°16'·15W

Add assoc. lgd *Ocean Energy Test Site (buoyed)*.

Delete Y spec. pillar Lt buoy Fl.Y.8s in 53°13'·63N 9°15'·97W.

Testing of renewable energy installations both above and below the surface takes place in this area.

Yachtsmen should avoid passing inside the cardinal buoys marking the test area. (ILNW 556/18)

**Doonagore Bay N**

Insert Lt Ldg 2Oc in 53°00'·90N 9°24'·29W (ILNW 722/18)

C55 (Ed 3/2015) WGS 84

**Dingle Bay**

Insert dangerous Wk sym. in 52°02'·61N 10°17'·33W (ILNW 523/18)

**Galway Bay**

An Ocean Energy Test Site has been established in Galway Bay.

Insert limit of restricted area joining:

53°13'·90N 9°16'·15W

53°13'·90N 9°15'·55W

53°13'·60N 9°15'·55W

53°13'·60N 9°16'·15W

Add assoc. lgd *Ocean Energy Test Site (buoyed)*.

Delete Y spec. pillar Lt buoy Fl.Y.8s in 53°13'·64N 9°15'·95W.

Testing of renewable energy installations both above and below the surface takes place in this area.

Yachtsmen should avoid passing inside the cardinal buoys marking the test area. (ILNW 557/18)

**Doonagore Bay N**

Insert Lt Ldg 2Oc in 53°00'·90N 9°24'·29W (ILNW 722/18)

C56 (Ed 6/2017) WGS 84

**Dingle Bay**

Insert dangerous Wk sym. in 52°02'·61N 10°17'·33W (ILNW 523/18)

**Castletown Berehaven (Plan E)**

Works have now commenced on the Dinish Wharf expansion project. The works will include, amongst other elements, the construction of new breakwaters and relocation of navigation lights. Yachtsmen are advised to navigate with caution in the area.

Insert legend *Works (2018)* centred on 51°38'·70N 9°54'·45W

For further information contact Castletown Berehaven Harbourmaster Tel: 027 70220 (ILNW 539/18)

**Castletown Berehaven (Plan E)**

Insert Y special pillar Lt buoy Fl(4)Y.20s in:

51°38'·65N 9°53'·96W

51°38'·77N 9°53'·19W

51°38'·86N 9°52'·59W (ILNW 669/18)

C57 (Ed 4/2017) WGS 84

**Cork Lower Harbour (Plan B)**

Insert Lgd *Works (2018)* centred on:

51°50'·08N 8°19'·39W

51°50'·10N 8°18'·20W (ILNW 543/18)

**Dunmore East (Plan F)**

Amend Lt:

Fl.R to Fl(3)R in 52°08'·98N 6°59'·40W

Fl.G to Fl(3)G in 52°08'·96N 6°59'·49W (ILNW 585/18)

**Dunmore East (Plan G)**

Amend Lt:

Fl.R.2s6m4M to Fl(3)R.10s6m4M in 52°08'·98N 6°59'·40W

Fl.G.2s6m4M to Fl(3)G.10s6m4M in 52°08'·96N 6°59'·49W (ILNW 585/18)

C59 (Ed 9/2015) WGS 84

**Swansea Bay (Main chart and Plans A & B)**

Amend label *Dredged to 1·0m (2016)* to *Maintained depth 0·5m* in:

51°35'·21N 3°56'·18W (Main chart)

51°34'·39N 3°56'·82W (Plan A)

51°36'·36N 3°55'·71W (Plan B) (ILNW 541/18)

**Bristol Channel**

Move BY N cardinal pillar Lt buoy **North One Fathom** Q in 51°20'·93N 3°12'·16W to 51°20'·84N 3°13'·13W (ILNW 572/18)

**Hinkley Point NW**

Move Y spher. Lt buoy Fl(5)Y.20s in 51°14'·01N 3°09'·53W to 51°13'·86N 3°10'·80W (ILNW 644/18)

**Hinkley Point NW (Plan H)**

Delete Y spher. Lt buoy Fl(5)Y.20s in 51°14'·01N 3°09'·53W. This buoy has been moved outside the W extent of the plan. (ILNW 644/18)

C60 (Ed 9/2017) WGS 84

**Thorn Point N (Plan E)**

Insert lgd *Scientific Instruments* centred on 51°41'·61N 5°06'·41W (ILNW 656/18)

C61 (Ed 3/2016) WGS 84

**Holyhead Deep**

Amend Y superbuoy name **F** to Lt desc. Fl(4)Y.15s in 53°17'·80N 4°47'·76W (ILNW 521/18)

**Cardigan Bay**

Insert Y spher. Lt buoy ODAS Fl(5)Y.20s in 56°26'·02N 4°47'·99W (ILNW 561/18)

**Holyhead Deep**

Insert racon sym & assoc. lgd *A/S* at Y Lt superbuoy Fl(4)Y.15s in 53°17'·80N 4°47'·76W (ILNW 566/18)

**Holy Island SW**

Insert Y special pillar Lt buoy Fl(5)Y.20s in 53°15'·48N 4°43'·26W (ILNW 568/18)

**Caernarfon Bar (Plan H)**

Move Lt buoy:

**C1** in 53°06'·96N 4°24'·47W to 53°07'·06N 4°24'·52W

**C3** in 53°07'·13N 4°23'·91W to 53°07'·17N 4°23'·95W plus amend Lt desc. Q.G to Fl(3)G.10s

**C6** in 53°07'·21N 4°21'·95W to 53°07'·08N 4°21'·74W (ILNW 581/18)

**Holyhead Bay**

Insert Y special spher. Lt buoy Fl(5)Y.20s (2 buoys) in 53°22'·37N 4°41'·84W (ILNW 642/18)

C62 (Ed 7/2016) WGS 84

**Holyhead Deep**

Amend Y superbuoy name **F** to Lt desc. Fl(4)Y.15s in 53°17'·80N 4°47'·76W (ILNW 521/18)

**West of Duddon Sands Wind Farm S**

Insert dangerous Wk sym. in 53°56'·00N 3°27'·60W (ILNW 560/18)

**Holyhead Deep**

Insert racon sym & assoc. lgd A/S at Y Lt superbuoy Fl(4)Y.15s in 53°17'·80N 4°47'·76W (ILNW 566/18)

**Holy Island SW**

Insert Y special pillar Lt buoy Fl(5)Y.20s in 53°15'·48N 4°43'·26W (ILNW 568/18)

**Carlingford Lough (Plan G)**

Amend Lt desc. at buoys:

**No1** Fl(3)G.6s to Q(3)G in 54°00'·80N 6°03'·33W

**No2** Fl(4)R.8s to Q(4)R in 54°00'·74N 6°03'·41W

**No3** Fl.G.4s to Fl.G.3s in 54°01'·12N 6°04'·02W

**No4** Fl.R.4s to Fl.R.3s in 54°01'·08N 6°04'·07W

**No7** Fl.G.5s to Q(3)G in 54°01'·51N 6°05'·06W

**No8** Fl(2)R.4s to Q(4)R in 54°01'·40N 6°04'·97W (ILNW 623/18)

**Holyhead Bay**

Insert Y special spher. Lt buoy Fl(5)Y.20s (*2 buoys*) in 53°22'·37N 4°41'·84W (ILNW 642/18)

**Blackpool NW**

Insert Y special pillar Lt buoy Fl.Y in 53°51'·67N 3°06'·20W. This buoy marks an obstn and seaward limit of an outfall. (ILNW 721/18)

C63 (Ed 9/2016) WGS 84

**Ayr (Plan S)**

The pontoon on the S shore of the River Ayr near the fish quay has been removed.

Delete:

Y minor Lt F in 52°28'·04N 4°38'·26W

Pontoon, line, joining:

52°28'·04N 4°38'·26W

55°28'·00N 4°38'·18W

and

55°28'·00N 4°38'·19W

55°28'·00N 4°38'·21W (shore)

Lgd *Pontoon* centred on 55°28'·02N 4°38'·23W (ILNW 522/18)

**Girvan (Plan T)**

Amend dredged depth:

2·6m (2001) to 0·8m (2018) centred on 55°14'·72N 4°51'·79W

1·7m (2014) to 1·2m (2018) centred on 55°14'·64N 4°51'·55W (ILNW 527/18)

**Lamlash Harbour (Plan I)**

Delete Bn sym in:

55°30'·84N 5°04'·23W

55°30'·64N 5°05'·07W (ILNW 619/18)

**Ardrossan (Plan P)**

Insert lit signal station sym. SS(Traffic) in:

55°38'·42N 4°49'·57W

55°38'·49N 4°49'·38W

Delete lgd SS(Traffic) at Control Tr in 55°38'·49N 4°49'·23W (ILNW 731/18)



C65 (Ed 7/2016) WGS 84

**Castle Bay (Plan A)**

New marina facilities have been completed in Castle Bay.

Insert:

Lt Fl.R.4s in 56°57'·27N 7°29'·53W

Jetty, line, joining:

56°57'·25N 7°29'·68W (shore)

56°57'·24N 7°29'·66W

56°57'·26N 7°29'·56W

and

56°57'·25N 7°29'·60W

56°57'·23N 7°29'·59W

56°57'·24N 7°29'·55W

56°57'·27N 7°29'·53W (light) (ILNW 542/18)

C66 (Ed 4/2016) WGS 84

**Inner Sound**

Insert Y spher. Lt buoy Fl(Y)20s in 57°30'·95N 5°54'·28W (ILNW 680/18)

C68 (Ed 7/2017) WGS 84

**Stromness Harbour (Plan D)**

Insert Y special Bn in:

58°58'·00N 3°17'·46W

58°57'·98N 3°17'·56W

58°57'·73N 3°17'·88W

58°57'·49N 3°18'·02W

58°57'·44N 3°18'·02W

58°57'·26N 3°17'·93W

These mark the end of outfalls. (ILNW 723/18)

C70 (Ed 4/2016) WGS 84

**Borkum W**

Move RW safe water pillar buoy Iso.4s plus racon sym. & assoc. lgd A/S in 53°36'·9N 6°19'·4E to 53°37'·0N 6°17'·7E (ILNW 528/18)

**Veja Mate Wind Farm W**

Work has begun on the construction of a Wind Farm adjacent to Veja Mate Wind Farm.

Insert restricted area joining:

54°20'·6N 5°49'·3E (existing limit)

54°18'·2N 5°43'·9E

54°16'·2N 5°48'·5E

54°16'·3N 5°49'·2E (existing limit)

Add associated lgd *Wind Farm under const'n*. (ILNW 535/18)

**Borkum Riffgrund N**

Insert racon sym. and assoc. lgd AIS at platform in 54°23'·3N 6°22'·8E (ILNW 536/18)

**Blyth E**

Construction work on the Blyth Demonstrator wind farm is now complete.

Delete lgd *under const'n* adjacent to wind turbine sym. centred on 55°07'·88N 1°24'·04W (ILNW 554/18)

**Schouwen-Bank Junction W**

Insert lit platform sym in 51°42'·0N 3°03'·4E (ILNW 594/18)

**Dogger bank NW & NE**

Delete Lt Mast in:  
55°06'·0N 2°42'·2E  
54°52'·0N 1°49'·0E (ILNW 598/18)

C80 (Ed 5/2018) WGS 84  
**Dogger bank NW & NE**  
Delete sym Mast in:  
55°05'·7N 2°42'·5E  
54°51'·9N 1°49'·3E (ILNW 597/18)

**Off Casquets TSS**  
Delete Y special pillar Lt buoy **E Channel** in 49°57'·9N 2°29'·4W (ILNW 681/18)

Y7 (Ed 2/2018) WGS 84  
**Knock John Channel**  
Replace Whis with Bell at RW safe water pillar Lt buoy **Knob** in 51°30'·70N 1°04'·27E (ILNW 678/18)

**Maplin Sands E**  
Delete starboard topmark at G con Lt buoy **Maplin** in 51°33'·71N 1°01'·38E (ILNW 737/18)

Y9 (Ed 3/2018) WGS 84  
**The Wash**  
Insert BRB isolated danger Lt buoy:  
**Z9** FI(2)6s in 52°59'·73N 0°22'·75E  
**Z6** FI(2)6s in 52°57'·52N 0°19'·17E (ILNW 665/18)

Y17 (Ed 11/2017) WGS 84  
**River Blackwater**  
Insert R can Lt buoy FI.R.3s in 51°44'·71N 0°53'·35E (ILNW 526/18)

Y18 (Ed 4/2016) WGS 84  
**Yantlet Channel (Plan)**  
Delete YB S card pillar Lt buoy **Oikos** Q(6)+LFI.15s in 51°30'·34N 0°33'·62E (ILNW 524/18)

Y23 (Ed 7/2016) WGS 84  
**Poole Harbour East**  
Move R can Lt buoy **NC14** FI.R.4s in 50°42'·30N 1°57'·98W to 50°42'·31N 1°57'·94W (ILNW 664/18)

Y26 (Ed 12/2016) WGS 84  
**Thorn Point N**  
Insert lgd *Scientific Instruments* centred on 51°41'·61N 5°06'·41W (ILNW 656/18)

Y30 (Ed 4/2018) WGS 84  
**Approaches to Portsmouth**  
Insert depth 0·3m in 50°46'·58N 1°06'·20W. Delete depth 0·6m close NW (ILNW 516/18)

**Southampton Water**  
Amend Lt desc. at G starboard con buoy Q.G to FI.G.5s in 50°52'·55N 1°22'·90W (ILNW 578/18)

**Bramble Bank W**  
Delete fog signal, Bell at YBY W cardinal pillar Lt buoy VQ(9) in 50°47'·20N 1°18'·65W (ILNW 643/18)

Y31 (Ed 4/2018) WGS 84

**Needles Channel**

Replace drying height -1.2m with drying height -2.7m in 50°41'·68N 1°35'·03W (ILNW 515/18)

Y32 (Ed 4/2018) WGS 84

**Approaches to Portsmouth**

Replace depth 0.6m with depth 0.3m in 50°46'·58N 1°06'·20W (ILNW 516/18)

Y35 (Ed 4/2018) WGS 84

**Approaches to Portsmouth**

Replace depth 0.6m with depth 0.3m in 50°46'·58N 1°06'·20W (ILNW 516/18)

**Portsmouth Harbour**

Insert *Obstn (Broken Piles)*, drying height -3.3m enclosed by dangerline in 50°49'·10N 1°08'·13W (ILNW 728/18)

Y36 (Ed 4/2018) WGS 84

**Thorn Channel**

Delete fog signal:

Bell(1)30s at BY N cardinal pillar Lt buoy **Calshot** in 50°48'·42N 1°17'·03W

Bell at YBY W cardinal pillar Lt buoy **W Bramble** in 50°47'·20N 1°18'·65W (ILNW 643/18)

**Portsmouth Harbour**

Insert *Obstn (Broken Piles)*, drying height -3.3m enclosed by dangerline in 50°49'·10N 1°08'·13W (ILNW 728/18)

Y37 (Ed 4/2018) WGS 84

**Southampton Water**

Amend Lt desc. at G starboard con buoy **Moorhead** Q.G to Fl.G.5s in 50°52'·55N 1°22'·90W (ILNW 578/18)

**Thorn Channel**

Delete fog signal:

Bell(1)30s at BY N cardinal pillar Lt buoy **Calshot** in 50°48'·42N 1°17'·03W

Bell at YBY W cardinal pillar Lt buoy **W Bramble** in 50°47'·20N 1°18'·65W (ILNW 643/18)

**Southampton Water**

Delete Lt mooring buoy *Hamble Cliff* in 50°51'·29N 1°20'·55W (ILNW 692/18)

Y38 (Ed 4/2018) WGS 84

**Needles Channel**

Insert drying height -2.7m in 50°41'·68N 1°35'·03W. Delete drying height -1.2m close E (ILNW 515/18)

Y58 (Ed 7/2016) WGS 84

**Falmouth Harbour**

Insert G con Lt buoy Q.G in 50°09'·68N 5°04'·20W

Move R can Lt buoy Q.R in 50°09'·75N 5°04'·34W to 50°09'·75N 5°04'·31W

The buoys in the Penryn River are now lit as follows:

Add Lt desc. at R can buoy:

Fl(5)R.10s in 50°09'·91N 5°04'·72W

Fl(4)R.10s in 50°09'·87N 5°04'·56W

Fl(3)R.10s in 50°09'·83N 5°04'·47W

Fl(2)R.10s in 50°09'·80N 5°04'·42W  
Add Lt desc. Fl(3)G.10s at G con buoy in 50°09'·87N 5°04'·49W (ILNW 540/18)

**Penryn River**

Insert G con Lt buoy Fl(2)G.10s in 50°09'·81N 5°04'·37W (ILNW 666/18)

Y70 (Ed 10/2006) WGS 84

**Port Erin W**

Delete lgd (*buoyed*) centred on 54°05'·00N 4°48'·26W (ILNW 565/18)

2000+6 (Ed 3/2018) WGS 84

**River Blackwater**

Insert R can Lt buoy Fl.R.3s in 51°44'·71N 0°53'·35E (ILNW 526/18)

2000+7 (Ed 3/2018) WGS 84

**River Blackwater**

Insert R can Lt buoy Fl.R.3s in 51°44'·71N 0°53'·35E (ILNW 526/18)

2000+10 (Ed 3/2018) WGS 84

**Lowestoft Harbour (Plan B)**

The pontoons have been reconfigured in Hamilton Dock. Two new pontoons emanate from the W quay. Insert Lt Fl.Y.2·5s in:

52°28'·58N 1°45'·45E (S pontoon head)

52°28'·59N 1°45'·47E (N pontoon head)

One pontoon from the N quay has been removed. Delete Lt Fl.Y.4s in 52°28'·58N 1°45'·46E (W pontoon head) (ILNW 583/18)

2100+1 (Ed 2/2018) WGS 84

**Knock John Channel**

Replace Whis with Bell at RW safe water pillar Lt buoy **Knob** in 51°30'·70N 1°04'·27E (ILNW 678/18)

**Maplin Sands E**

Delete starboard topmark at G con Lt buoy **Maplin** in 51°33'·71N 1°01'·38E (ILNW 737/18)

2100+2 (Ed 2/2018) WGS 84

**Yantlet Channel**

Delete YB S card pillar Lt buoy **Oikos** Q(6)+LFl.15s in 51°30'·34N 0°33'·62E (ILNW 524/18)

2100+3 (Ed 2/2018) WGS 84

**Yantlet Channel (Panel A)**

Works to construct the new Oikos jetty have now been completed.

Insert jetty, line, joining:

51°30'·53N 0°33'·65E (existing jetty)

51°30'·38N 0°33'·59E

and

51°30'·40N 0°33'·47E

51°30'·38N 0°33'·59E

51°30'·38N 0°33'·76E

The jetty is marked by 3 minor G Lts. Entry is restricted around the structure.

Delete:

lgd *Works in progress* (2017) centred on 51°30'·37N 0°33'·32E

YB S card pillar Lt buoy **Oikos** Q(6)+LFl.15s in 51°30'·34N 0°33'·62E

minor G Lts in:

51°30'·51N 0°33'·56E  
51°30'·50N 0°33'·63E (ILNW 524/18)

**East Tilbury Jetty (Panel B)**

Insert jetty, line, joining:  
51°27'·24N 0°24'·24E  
51°27'·18N 0°24'·26E  
51°27'·17N 0°24'·17E  
The jetty is marked by 2 minor G Lts (ILNW 694/18)

2100+4 (Ed 2/2018) WGS 84

**Gallions Reach (Panel B)**

Insert G con Lt buoy **Gallions** Fl.G.3s in 51°29'·97N 0°04'·45E (ILNW 727/18)

2100+10 (Ed 2/2018) WGS 84

**Rampion Offshore Wind Farm**

Construction work on the Rampion Offshore wind farm is now complete.  
Insert accompanying block correction centred on 50°40'·83N 0°14'·60W (ILNW 513/18)

**Bognor Regis S & The Looe**

Insert depth:  
2·6m in 50°45'·52N 0°39'·01W. Delete depth 4·1m close N  
1·7m in 50°40'·44N 0°45'·78W (ILNW 728/18)

2100+12 (Ed 2/2018) WGS 84

**Bognor Regis S & The Looe (Plan E)**

Insert depth:  
2·6m in 50°45'·52N 0°39'·01W. Delete depth 4·1m close N  
1·7m in 50°40'·44N 0°45'·78W (ILNW 728/18)

2110+1 (Ed 1/2017) WGS 84

**Beachy Head**

Amend range of Lt Fl(2)20s8M to 16M in 50°44'·0N 0°14'·5E (ILNW 569/18)

**Rampion Offshore Wind Farm**

Construction work on the Rampion Offshore wind farm is now complete.  
Insert label *Rampion Offshore Wind Farm* centred on 50°40'·50N 0°16'·50W  
Delete Lt Mast (103) Mo(U)10M Horn Mo(U) in 50°41'·35N 0°20'·69W (ILNW 590/18)

**Vergoyer**

Insert racon sym. plus assoc. lgd A/S at BYB E cardinal pillar Lt buoy **Vergoyer Est** VQ(3) in 50°35'·7N 1°19'·9E (ILNW 608/18)

**Automatic Identification Systems**

Delete racon sym. & assoc. lgd AIS at Lt:  
Fl.5s23M in 49°43'·3N 1°57'·1W  
Fl(3)WR.15s in 49°40'·5N 1°38'·9W  
Fl.R.5s17M in 49°41'·7N 1°28'·2W  
Fl(2)10s25M in 49°41'·8N 1°16'·00W (ILNW 626/18)

2110+2 (Ed 1/2017) WGS 84

**Dunkerque N**

Delete Y special pillar Lt buoy **DY4** Fl(4)Y.20s in 51°06'·88N 2°23'·11E (ILNW 587/18)

**Dunkerque Port Ouest**

Delete Lt Dir Iso.WRG.4s13m14-11M in 51°00'·06N 2°10'·73E (ILNW 647/18)

**Dunkerque Port Ouest N**

Delete Y special con Lt buoy Fl.Y.2·5s in:

51°05'·94N 2°09'·45E

51°04'·45N 2°11'·25E (ILNW 700/18)

2110+3 (Ed 1/2017) WGS 84

**Vergoyer**

Insert racon sym. plus assoc. lgd AIS at BYB E cardinal pillar Lt buoy **Vergoyer Est** VQ(3)5s in

50°35'·75N 1°19'·67E (ILNW 608/18)

2110+4 (Ed 1/2017) WGS 84

**Dunkerque N (Plan B)**

Delete Y special pillar Lt buoy **DY4** Fl(4)Y.20s in 51°06'·88N 2°23'·11E (ILNW 587/18)

**Nieuwpoort (Plan A)**

Insert lgd *Works in progress (2018)* centred on 51°09'·16N 2°43'·58E (ILNW 633/18)

**Dunkerque Port Ouest (Plan B)**

Delete Lt Dir Iso.WRG.4s13m14-11M in 51°00'·06N 2°10'·73E (ILNW 647/18)

**Dunkerque Port Ouest N (Plan B)**

Delete Y special con Lt buoy Fl.Y.2·5s in:

51°05'·90N 2°09'·45E

51°04'·45N 2°11'·25E (ILNW 700/18)

2110+5 (Ed 1/2017) WGS 84

**Baie de Seine**

Insert label *Measuring Instruments (see Note)* centred on 49°28'·68N 0°14'·30W

Between 15 March and 15 November fishing, dredging, trawling, and anchoring are prohibited in this area. (ILNW 530/18)

2110+9 (Ed 1/2017) WGS 84

**Baie de Seine**

Insert label *Measuring Instruments (see Note)* centred on:

49°28'·68N 0°14'·30W

49°24'·23N 0°27'·53W

Between 15 March and 15 November fishing, dredging, trawling, and anchoring are prohibited in these areas. (ILNW 530/18)

2110+10 (Ed 1/2017) WGS 84

**Automatic Identification Systems**

Delete racon sym. & assoc. lgd AIS at Lt:

**Gros du Raz** Fl.5s48m23M in 49°43'·31N 1°57'·27W

Fl(3)WR.15s19m24/20M in 49°40'·46N 1°38'·87W

**LIGHTHOUSE** Fl.R.5s36m17M in 49°41'·75N 1°28'·39W

**LIGHTHOUSE** Fl(2)10s72m25M in 49°41'·8N 1°16'·00W (ILNW 626/18)

2110+11 (Ed 1/2017) WGS 84

**Cherbourg (Plan K)**

Delete racon sym and lgd AIS at Lt Fl(3)WR.15s19m24/20M in 49°40'·46N 1°38'·87W (ILNW 626/18)

**Baie du Grand Vey (Plan H)**

Move G starboard con buoy **No1** Fl.G.2·5s in 49°23'·91N 1°08'·44W to 49°24'·29N 1°08'·57W (ILNW 670/18)

**Baie du Grand Vey (Plan H)**

Amend Lt desc at buoy:

**No1** Fl.G.2·5s to Fl.G.4s in 49°24'·29N 1°08'·57W

**No2** Fl.R.2·5s to Fl.R.4s in 49°23'·87N 1°08'·33W (ILNW 701/18)

2120 (Ed 2/2018) WGS 84

**Windfarm Borssele (2120.1)**

Insert lit platform sym **BSA** Mo(U)15s plus fog signal Horn in 51°42'·00N 3°03'·40E (ILNW 594/18)

**Windfarm Borssele (2120.11)**

Insert lit platform sym in 51°42'·0N 3°03'·4E (ILNW 594/18)

**Zeebrugge (2120.4 B)**

Delete Lt:

F.R in 51°20'·50N 3°12'·73E

F.G in 51°20'·51N 3°12'·77E (ILNW 598/18)

**Stroombank (2120.4)**

Insert lgd *Historic Wk* (see Note) at wk in 51°13'·82N 2°52'·87E (ILNW 599/18)

**Windpark Q7 Wind Farm (2120.9)**

Insert lit wind turbine sym. Mo(U)Y.15s18m5M in 52°36'·18N 4°11'·61E (ILNW 622/18)

**Nieuwpoort (2120.3 A)**

Insert lgd *Works in progress* (2018) centred on 51°09'·16N 2°43'·58E (ILNW 633/18)

**Windfarm Borssele SW (2120.1)**

Construction work on the Rentel Wind Farm is now complete. Delete lgd *Under construction* (2017) (*buoyed*) centred on 51°35'·7N 2°56'·7E. Yachtsmen are advised that entry is prohibited throughout the wind farm. (ILNW 675/18)

**Windfarm Borssele SW (2120.11)**

Construction work on the Rentel Wind Farm is now complete. Replace lgd *Works in progress* (2017) with wind farm sym. centred on 51°35'·0N 2°56'·5E. Yachtsmen are advised that entry is prohibited throughout the wind farm. (ILNW 675/18)

**Notification of new edition**

A new edition of this chart atlas will shortly be published. In addition to the listed corrections, the charts have been fully updated throughout. (ILNW 718/18)

2130 (Ed 3/2018) WGS 84

**Windfarm Borssele (2130.1)**

Insert lit platform sym **BSA** Mo(U)15s plus fog signal Horn in 51°42'·00N 3°03'·40E (ILNW 594/18)

**Everingen (2130.5)**

Depths have changed In Everingen south of Geul van Baarland. Buoyage has been moved accordingly.

Insert R lt spar buoy **E 12A** Iso.R.2s in 51°21'·85N 3°52'·11E

Move buoy:

**E8** to 51°22'·33N 3°50'·07E

**E8A** to 51°21'·93N 3°50'·61E

**E9A** to 51°21'·77N 3°50'·43E

**E10** to 51°21'·74N 3°51'·30E

**E11** to 51°21'·60N 3°51'·23E

**E12** to 51°21'·75N 3°51'·77E

**E13** to 51°21'·62N 3°52'·03E  
**E14** to 51°22'·04N 3°52'·47E  
**E15** to 51°21'·96N 3°52'·61E  
**E16** to 51°22'·50N 3°53'·09E  
(ILNW 610/18)

### **Zuidergat (2130.6)**

Insert:

YBY W cardinal lt buoy **ZG-SvV** in 51°25'·29N 4°02'·14E. Delete buoy **42A** close W  
Y spar buoy **F ZG** in 51°25'·30N 4°02'·66E. Delete buoy **F42A** close W.

Move Y special spar buoy **F42** to 51°25'·70N 4°02'·07E.

This buoyage movement marks the adjusted outline extent of the Fietspad. (ILNW 611/18)

### **Schaar van Valkenisse (2130.6)**

Delete buoy:

**SvV 16** in 51°22'·37N 4°06'·25E

**SvV 14** in 51°22'·55N 4°05'·98E

**SvV 13** in 51°22'·36N 4°05'·98E

**SvV 11** in 51°22'·68N 4°05'·67E

**SvV 12** in 51°22'·74N 4°05'·86E

**SvV 10** in 51°23'·17N 4°05'·61E

**SvV 9** in 51°23'·14N 4°05'·36E

Insert:

Y can lt buoy **SvV-A** Fl(3)Y.10s in 51°23'·21N 4°05'·59E

Y can lt buoy **SvV-B** Fl(3)Y.10s in 51°22'·78N 4°05'·88E

Y spar lt buoy **SvV-C** VQ in 51°22'·35N 4°06'·25E

Y con lt buoy **SvV-X** Fl.Y.5s in 51°23'·14N 4°05'·36E

Y con lt buoy **SvV-Y** Fl.Y.5s in 51°22'·70N 4°05'·61E

Y spar lt buoy **SvV-Z** VQ in 51°22'·35N 4°05'·87E (ILNW 612/18)

### **Straatje van Willem (2130.5)**

Insert depth:

0·9m in 51°21'·78N 3°51'·69E

3·0m in 51°21'·97N 3°52'·23E

Replace depth 1·5m with depth 1·0m in 51°22'·28N 3°54'·65E (ILNW 640/18)

### **Westpit NW (2130 01)**

Work has begun on the construction of the Norther Wind Farm between Thorntonbank and Westpit.

Insert restricted area joining:

51°34'·65N 3°01'·75E

51°32'·62N 3°05'·25E

51°28'·91N 2°57'·89E

51°30'·69N 2°55'·30E

Add associated lgd *Norther Wind Farm under construction (buoyed)*. Entry to the construction area is prohibited for unauthorised craft (ILNW 674/18)

### **Lodewijkbank SE (2130.1)**

Construction work on the Rentel Wind Farm is now complete.

Insert restricted area joining:

51°37'·55N 2°57'·30E

51°35'·35N 3°00'·96E

51°33'·44N 2°56'·35E

51°35'·47N 2°52'·47E

Insert assoc. wind farm sym. Yachtsmen are advised that entry is prohibited throughout the wind farm. (ILNW 675/18)

### **Notification of new edition**

A new edition of this chart atlas will shortly be published. In addition to the listed corrections, the charts have been fully updated throughout. (ILNW 718/18)



2140 (Ed 2/2018)

**Botlekbrug (2140.7)**

Buoyage at the Botlekbridge has been amended due to piling works. Further details will be included once available.

Insert Igd Works in Progress (2018) centred on 51°52'·28N 4°19'·87E. (ILNW 613/18)

**Notification of new edition**

A new edition of this chart atlas will shortly be published. In addition to the listed corrections, the charts have been fully updated throughout. (ILNW 718/18)

2150 (Ed 3/2018) WGS 84

**Zuidostrak (2150.7)**

Amend name of buoy from **ZR 21A** to **ZR 19A** in 53°08'·08N 5°14'·27E. (ILNW 614/18)

**Lutjewad (2150.15)**

Move buoy:

**LW 7** to 53°26'·32N 6°23'·23E

**LW 36** to 53°26'·39N 6°23'·37E. (ILNW 615/18)

**Scheepsgat (2150.10 & 2150.11)**

Move:

R can buoy **SCH 4** to 53°24'·72N 5°45'·11E

R spar buoy **SCH 4A** to 53°25'·00N 5°45'·39E

G spar buoy **SCH 5** to 53°25'·18N 5°45'·86E

R spar buoy **SCH 6** to 53°25'·22N 5°45'·79E

G spar buoy **SCH 7** to 53°25'·27N 5°46'·21E

R spar buoy **SCH 8** to 53°25'·33N 5°46'·18E

G spar buoy **SCH 9** to 53°25'·27N 5°46'·57E (ILNW 617/18)

**Veerbootgat (2150.11)**

Delete:

Y spar buoy **VA-A** in 53°25'·20N 5°47'·25E

Y spar buoy **VA-B** in 53°25'·11N 5°47'·48E

Y spar buoy **VA-C** in 53°25'·02N 5°47'·71E

G spar lit buoy **VA 7** Q.G in 53°25'·27N 5°47'·17E

G spar lit buoy **VA 11** Iso.G.4s in 53°24'·89N 5°47'·87E

Insert:

G spar buoy **HWR 1** in 53°25'·29N 5°46'·91E

GRG spar lit buoy **VA 7-HWR 2** Q.G in 53°25'·29N 5°47'·12E

G spar buoy **HWR 3** in 53°25'·14N 5°47'·24E

R spar buoy **HWR 4** in 53°25'·18N 5°47'·37E

G spar buoy **HWR 5** in 53°25'·00N 5°47'·55E

R spar buoy **HWR 6** in 53°25'·09N 5°47'·64E

G spar buoy **HWR 7** in 53°24'·86N 5°47'·86E

GRG spar lit buoy **VA 11-HWR 8** Iso.G.4s in 53°24'·98N 5°47'·89E

Move:

W card spar lit buoy **VA 8-ZS 1** VQ(9)10s to 53°25'·30N 5°47'·71E

G spar lit buoy **VA 9** Q.G to 53°25'·25N 5°47'·67E

G spar lit buoy **VA 9A** Iso.G.8s to 53°25'·08N 5°47'·83E

R spar lit buoy **VA 10** Iso.R .8s to 53°24'·91N 5°47'·98E (ILNW 618/18)

**Starta van Schieringhals (2150.7)**

Move G starboard spar buoy **IN1** in 53°14'·95N 5°09'·26E to 53°14'·54N 5°09'·00E

Delete:

G spar buoy **IN 1A** in 53°14'·56N 5°09'·26E

R spar buoy **IN 2A** in 53°14'·56N 5°09'·64E (ILNW 682/18)

**Notification of new edition**

A new edition of this chart atlas will shortly be published. In addition to the listed corrections, the atlas has been extended to include passage to the Kiel Canal. A new plan of Borkum Yacht Harbour, and more detailed charting of the approaches to Norderney have also been included. There has been general updating throughout. (ILNW 719/18)

**Approaches to Harlingen (2150.8)**

Delete Y special spher. buoy **K-STORT** in 53°11'·26N 5°24'·39E (ILNW 732/18)

**Schuitengat (2150.6)**

Move buoy **S 1a** to 53°20'·53N 5°12'·27E (ILNW 733/18)

2160 (Ed 3/2018) WGS 84

**IJsselooog (2160.13)**

Delete:

Light **FL14/Ketelmeer** Fl(5)Y.20s in 52°35'·83N 5°45'·53E

Bn **FL15** Fl(5)Y.20s in 52°35'·96N 5°43'·60E. (ILNW 616/18)

**Notification of new edition**

A new edition of this chart atlas will shortly be published. In addition to the listed corrections, the charts have been fully updated throughout. (ILNW 718/18)

2200+1 (Ed 4/2018) WGS 84

**Approaches to Portsmouth**

Insert depth 0·3m in 50°46'·58N 1°06'·20W. Delete depth 0·6m close NW (ILNW 516/18)

**Southampton Water**

Amend Lt desc. at G starboard con buoy Q.G to Fl.G.5s in 50°52'·55N 1°22'·90W (ILNW 578/18)

**Bramble Bank W**

Delete fog signal, Bell at YBY W cardinal pillar Lt buoy VQ(9) in 50°47'·20N 1°18'·65W (ILNW 643/18)

2200+2 (Ed 4/2018) WGS 84

**Needles Channel**

Replace drying height -1·2m with drying height -2·7m in 50°41'·68N 1°35'·03W (ILNW 515/18)

2200+3 (Ed 4/2018) WGS 84

**Approaches to Portsmouth**

Replace depth 0·6m with depth 0·3m in 50°46'·58N 1°06'·20W (ILNW 516/18)

2200+5 (Ed 4/2018) WGS 84

**Approaches to Portsmouth**

Replace depth 0·6m with depth 0·3m in 50°46'·58N 1°06'·20W (ILNW 516/18)

**Portsmouth Harbour**

Insert *Obstn (Broken Piles)*, drying height -3·3m enclosed by dangerline in 50°49'·10N 1°08'·13W (ILNW 728/18)

2200+6 (Ed 4/2018) WGS 84

**Thorn Channel**

Delete fog signal:

Bell(1)30s at BY N cardinal pillar Lt buoy **Calshot** in 50°48'·42N 1°17'·03W

Bell at YBY W cardinal pillar Lt buoy **W Bramble** in 50°47'·20N 1°18'·65W (ILNW 643/18)

**Portsmouth Harbour**

Insert *Obstn (Broken Piles)*, drying height -3.3m enclosed by dangerline in 50°49'·10N 1°08'·13W (ILNW 728/18)

2200+7 (Ed 4/2018) WGS 84

**Southampton Water**

Amend Lt desc. at G starboard con buoy **Moorhead** Q.G to Fl.G.5s in 50°52'·55N 1°22'·90W (ILNW 578/18)

**Thorn Channel**

Delete fog signal:

Bell(1)30s at BY N cardinal pillar Lt buoy **Calshot** in 50°48'·42N 1°17'·03W

Bell at YBY W cardinal pillar Lt buoy **W Bramble** in 50°47'·20N 1°18'·65W (ILNW 643/18)

**Southampton Water**

Delete Lt mooring buoy *Hamble Cliff* in 50°51'·29N 1°20'·55W (ILNW 692/18)

2200+8 (Ed 4/2018) WGS 84

**Needles Channel**

Insert drying height -2.7m in 50°41'·68N 1°35'·03W. Delete drying height -1.2m close E (ILNW 515/18)

2200+10 (Ed 4/2018) WGS 84

**Beaulieu River (Plan C)**

Insert drying height:

-1.3m in 50°47'·98N 1°25'·23W. Delete depth 0.7m close E

-0.2m in 50°46'·95N 1°21'·80W. Extend 0m contour E to enclose. (ILNW 525/18)

2200+11 (Ed 4/2018) WGS 84

**Southampton Water**

Amend Lt desc. at G starboard con buoy **Moorhead** Q.G to Fl.G.5s in 50°52'·55N 1°22'·90W (ILNW 578/18)

2300+1 (Ed 12/2015) WGS 84

**Off Casquets TSS**

Delete Y special pillar Lt buoy **East Channel** Fl.Y.5s & assoc. racon, Racon(T) in 49°58'·7N 2°29'·0W (ILNW 654/18)

**Start Point**

Amend Lt Fl(3)10s62m25M&F.R.9M Horn(1)60s to Fl(3)10s62m18M&F.R.9M Horn(1)30s in 50°13'·35N 3°38'·53W (ILNW 657/18)

**Notification of New Edition**

A new edition of this atlas will shortly be published. In addition to the listed corrections, the latest depth surveys have been applied. The River Dart chart has been reschemed to show larger scale coverage of Kingswear and Dartmouth. For this edition tidal stream information is included. There has been general updating throughout

Individual sheets of this atlas will no longer be sold separately. However, 1st edition charts Y39, Y40 and Y41 will be published shortly that replicate charts 2300.5, 2300.6 and 2300.8 respectively. These are part of our 'small format Y chart series' that mirror coverage of sheets from the corresponding atlas and printed A2 size. For details of these please see our website. (ILNW 710/18)

2300+2 (Ed 12/2015) WGS 84

**Notification of New Edition**

A new edition of this atlas will shortly be published. In addition to the listed corrections, the latest depth surveys have been applied. The River Dart chart has been reschemed to show larger scale coverage of Kingswear and Dartmouth. For this edition tidal stream information is included. There has been general updating throughout

Individual sheets of this atlas will no longer be sold separately. However, 1st edition charts Y39, Y40 and Y41 will be published shortly that replicate charts 2300.5, 2300.6 and 2300.8 respectively. These are part of our 'small format Y chart series' that mirror coverage of sheets from the corresponding atlas and printed A2 size. For details of these please see our website. (ILNW 710/18)

2300+3 (Ed 12/2015) WGS 84

**Notification of New Edition**

A new edition of this atlas will shortly be published. In addition to the listed corrections, the latest depth surveys have been applied. The River Dart chart has been reschemed to show larger scale coverage of Kingswear and Dartmouth. For this edition tidal stream information is included. There has been general updating throughout

Individual sheets of this atlas will no longer be sold separately. However, 1st edition charts Y39, Y40 and Y41 will be published shortly that replicate charts 2300.5, 2300.6 and 2300.8 respectively. These are part of our 'small format Y chart series' that mirror coverage of sheets from the corresponding atlas and printed A2 size. For details of these please see our website. (ILNW 710/18)

2300+4 (Ed 12/2015) WGS 84

**Start Point**

Amend Lt Fl(3)10s62m25M&F.R.9M Horn(1)60s to Fl(3)10s62m18M&F.R.9M Horn(1)30s in 50°13'·35N 3°38'·53W (ILNW 657/18)

**Notification of New Edition**

A new edition of this atlas will shortly be published. In addition to the listed corrections, the latest depth surveys have been applied. The River Dart chart has been reschemed to show larger scale coverage of Kingswear and Dartmouth. For this edition tidal stream information is included. There has been general updating throughout

Individual sheets of this atlas will no longer be sold separately. However, 1st edition charts Y39, Y40 and Y41 will be published shortly that replicate charts 2300.5, 2300.6 and 2300.8 respectively. These are part of our 'small format Y chart series' that mirror coverage of sheets from the corresponding atlas and printed A2 size. For details of these please see our website. (ILNW 710/18)

2300+5 (Ed 12/2015) WGS 84

**Poole Harbour East**

Move R can Lt buoy **NC14** Fl.R.4s in 50°42'·30N 1°57'·97W to 50°42'·31N 1°57'·94W (ILNW 664/18)

**Notification of New Edition**

A new edition of this atlas will shortly be published. In addition to the listed corrections, the latest depth surveys have been applied. The River Dart chart has been reschemed to show larger scale coverage of Kingswear and Dartmouth. For this edition tidal stream information is included. There has been general updating throughout

Individual sheets of this atlas will no longer be sold separately. However, 1st edition charts Y39, Y40 and Y41 will be published shortly that replicate charts 2300.5, 2300.6 and 2300.8 respectively. These are part of our 'small format Y chart series' that mirror coverage of sheets from the corresponding atlas and printed A2 size. For details of these please see our website. (ILNW 710/18)

2300+6 (Ed 12/2015) WGS 84

**Notification of New Edition**

A new edition of this atlas will shortly be published. In addition to the listed corrections, the latest depth surveys have been applied. The River Dart chart has been reschemed to show larger scale coverage of Kingswear and Dartmouth. For this edition tidal stream information is included. There has been general updating throughout

Individual sheets of this atlas will no longer be sold separately. However, 1st edition charts Y39, Y40 and Y41 will be published shortly that replicate charts 2300.5, 2300.6 and 2300.8 respectively. These are part of our 'small format Y chart series' that mirror coverage of sheets from the corresponding atlas and printed A2 size. For details of these please see our website. (ILNW 710/18)

2300+7 (Ed 12/2015) WGS 84

**Start Point**

Amend Lt Fl(3)10s62m25M&F.R.9M Horn(1)60s to Fl(3)10s62m18M&F.R.9M Horn(1)30s in 50°13'·35N 3°38'·53W (ILNW 657/18)

**Notification of New Edition**

A new edition of this atlas will shortly be published. In addition to the listed corrections, the latest depth surveys have been applied. The River Dart chart has been reschemed to show larger scale coverage of Kingswear and Dartmouth. For this edition tidal stream information is included. There has been general updating throughout

Individual sheets of this atlas will no longer be sold separately. However, 1st edition charts Y39, Y40 and Y41 will be published shortly that replicate charts 2300.5, 2300.6 and 2300.8 respectively. These are part of our 'small format Y chart series' that mirror coverage of sheets from the corresponding atlas and printed A2 size. For details of these please see our website. (ILNW 710/18)

2300+8 (Ed 12/2015) WGS 84

**Teignmouth Harbour (Plan A)**

Insert:

G con Lt buoy **Spratt Sands Inner** Fl.G.2s in 50°32'·37N 3°29'·90W  
R can Lt buoy **Ness Rocks** Fl.R.2s in 50°32'·34N 3°29'·79W (ILNW 699/18)

**Notification of New Edition**

A new edition of this atlas will shortly be published. In addition to the listed corrections, the latest depth surveys have been applied. The River Dart chart has been reschemed to show larger scale coverage of Kingswear and Dartmouth. For this edition tidal stream information is included. There has been general updating throughout

Individual sheets of this atlas will no longer be sold separately. However, 1st edition charts Y39, Y40 and Y41 will be published shortly that replicate charts 2300.5, 2300.6 and 2300.8 respectively. These are part of our 'small format Y chart series' that mirror coverage of sheets from the corresponding atlas and printed A2 size. For details of these please see our website. (ILNW 710/18)

2300+9 (Ed 12/2015) WGS 84

**Notification of New Edition**

A new edition of this atlas will shortly be published. In addition to the listed corrections, the latest depth surveys have been applied. The River Dart chart has been reschemed to show larger scale coverage of Kingswear and Dartmouth. For this edition tidal stream information is included. There has been general updating throughout

Individual sheets of this atlas will no longer be sold separately. However, 1st edition charts Y39, Y40 and Y41 will be published shortly that replicate charts 2300.5, 2300.6 and 2300.8 respectively. These are part of our 'small format Y chart series' that mirror coverage of sheets from the corresponding atlas and printed A2 size. For details of these please see our website. (ILNW 710/18)

2400+3 (Ed 10/2015) WGS 84

**Bryher SW**

Replace islet with drying height -4.3m in 49°56'·81N 6°21'·84W (ILNW 667/18)

2400+8 (Ed 10/2015) WGS 84

**Eddystone Rocks NE**

Insert Y pillar Lt buoy FI(5)Y.20s in 50°15'·25N 4°12'·85W (ILNW 631/18)

**Start Point**

Amend Lt FI(3)10s62m25M&F.R.9M Horn(1)60s to FI(3)10s62m18M&F.R.9M Horn(1)30s in 50°13'·35N 3°38'·53W (ILNW 657/18)

2400+11 (Ed 10/2015) WGS 84

**Helford River**

Insert BY N cardinal spar Lt buoy **The Voose** Q (*seasonal*) PA in 50°05'·82N 5°06'·91W. Delete BY N cardinal spar buoy **The Voose** close SW

Move G special con buoy **Bar** PA in 50°05'·86N 5°07'·81W to 50°05'·88N 5°07'·92W plus add lgd (*seasonal*) (ILNW 668/18)

2400+12 (Ed 10/2015) WGS 84

**Falmouth Harbour**

Insert G con Lt buoy Q.G in 50°09'·68N 5°04'·20W

Move R can Lt buoy Q.R in 50°09'·75N 5°04'·34W to 50°09'·75N 5°04'·31W

The buoys in the Penryn River are now lit as follows:

Add Lt desc. at R can buoy:

FI(5)R.10s in 50°09'·91N 5°04'·72W

FI(4)R.10s in 50°09'·87N 5°04'·56W

FI(3)R.10s in 50°09'·83N 5°04'·47W

FI(2)R.10s in 50°09'·80N 5°04'·42W

Add Lt desc. FI(3)G.10s at G con buoy in 50°09'·87N 5°04'·49W (ILNW 540/18)

**Penryn River**

Insert G con Lt buoy FI(2)G.10s in 50°09'·81N 5°04'·37W (ILNW 666/18)

2400+15 (Ed 10/2015) WGS 84

**Start Point**

Amend Lt FI(3)10s62m25M&F.R.9M Horn(1)60s to FI(3)10s62m18M&F.R.9M Horn(1)30s in 50°13'·35N 3°38'·53W (ILNW 657/18)

2500+1 (Ed 3/2017) WGS 84

**Cap de Carteret**

Delete racon sym. plus assoc. lgd AIS at Lt FI(2+1)15s26M in 49°22'·4N 1°48'·4W (ILNW 607/18)

**Automatic Identification Systems**

Delete racon sym. & assoc. lgd AIS at Lt:

FI.5s23M in 49°43'·3N 1°57'·1W

FI(3)WR.15s24/20M in 49°40'·5N 1°38'·9W

FI.R.5s17M in 49°41'·7N 1°28'·2W

FI(2)10s25M in 49°41'·8N 1°16'·00W (ILNW 626/18)

**Off Casquets TSS**

Delete Y special pillar Lt buoy **E Channel** FI.Y.5s & assoc. racon, Racon(T) in 49°58'·6N 2°28'·7W (ILNW 654/18)

**Start Point**

Amend range of Lt FI(3)25M to 18M in 50°13'·3N 3°38'·4W. F.R.9M Lt remains unchanged. (ILNW 657/18)

2500+2 (Ed 3/2017) WGS 84

**Automatic Identification Systems (Main chart & Plan A)**

Delete racon sym & assoc. lgd AIS at Lt:

**Gros du Raz** FI.5s48m23M in 49°43'·31N 1°57'·27W (Main chart)

Fort de l'Ouest Lt FI(3)WR.15s19m24/20M in 49°40'·46N 1°38'·87W (Main chart & Plan A)

**LIGHTHOUSE** FI.R.5s36m17M in 49°41'·75N 1°28'·39W (Main chart)

**LIGHTHOUSE** FI(2)10s72m25M in 49°41'·8N 1°16'·00W (Main chart) (ILNW 626/18)

**Cap de la Hague SW**

Delete dangerline joining:

49°42'·89N 2°00'·29W

49°42'·89N 1°59'·97W

49°42'·55N 1°59'·97W

49°42'·55N 2°00'·29W

plus assoc. lgd ODAS. (ILNW 683/18)

2500+4 (Ed 3/2017) WGS 84

**Cap de Carteret**

Delete racon sym. plus assoc. lgd AIS at Lt FI(2+1)15s81m26M in 49°22'·41N 1°48'·41W (ILNW 607/18)

**Cap de la Hague**

Delete racon sym and lgd AIS at Lt Gros du Raz FI.5s48m23M in 49°43'·31N 1°57'·27W (ILNW 626/18)

**Cap de la Hague SW**

Delete dangerline joining:

49°42'·89N 2°00'·29W

49°42'·89N 1°59'·97W

49°42'·55N 1°59'·97W

49°42'·55N 2°00'·29W

plus assoc. lgd ODAS. (ILNW 683/18)

2500+8 (Ed 3/2017) WGS 84

**Cap de Carteret (Main chart & Plan A)**

Delete racon sym. plus assoc. lgd AIS at Lt FI(2+1)15s81m26M in 49°22'·41N 1°48'·41W (ILNW 607/18)

2510+1 (Ed 5/2015) WGS 84

**Automatic Identification Systems**

Delete racon sym. & assoc. lgd AIS at Lt:

**Sein** in 48°02'·62N 4°52'·01W

**Ar-Men** in 48°03'·1N 4°59'·9W (ILNW 558/18)

**Cap de Carteret**

Delete racon sym. plus assoc. lgd AIS at Lt FI(2+1)15s26M in 49°22'·4N 1°48'·4W (ILNW 607/18)

**Automatic Identification Systems**

Delete racon sym. & assoc. lgd AIS at Lt:

FI.5s23M in 49°43'·3N 1°57'·1W

FI(3)WR.15s24/20M in 49°40'·5N 1°38'·9W

FI.R.5s17M in 49°41'·7N 1°28'·2W (ILNW 626/18)

2510+13 (Ed 5/2015) WGS 84

**Avant Goulet de Brest**

Delete BRB isolated danger pillar Lt buoy **Swansea Vale** Fl(2)6s plus assoc. fog signal Whis and racon sym plus lgd AIS in 48°18'·28N 4°38'·84W (ILNW 606/18)

2600+1 (Ed 12/2016) WGS 84

**Bristol Channel**

Move BY N cardinal pillar Lt buoy Q in 51°20'·9N 3°12'·2W to 51°20'·8N 3°13'·1W (ILNW 572/18)

2600+5 (Ed 12/2016) WGS 84

**Swansea Bay (Main chart and Plans A & B)**

Amend label *Dredged to 1·0m (2016)* to *Maintained depth 0·5m* in:

51°35'·21N 3°56'·18W (Main chart)

51°34'·39N 3°56'·82W (Plan A)

51°36'·36N 3°55'·71W (Plan B) (ILNW 541/18)

2600+6 (Ed 12/2016) WGS 84

**One Fathom Bank**

Move BY N cardinal pillar Lt buoy **North One Fathom** Q in 51°20'·93N 3°12'·17W to 51°20'·84N 3°13'·13W (ILNW 572/18)

**Hinkley Point NW**

Move Y spher. Lt buoy Fl(5)Y.20s in 51°13'·99N 3°09'·52W to 51°13'·86N 3°10'·80W (ILNW 644/18)

2600+7 (Ed 12/2016) WGS 84

**One Fathom Bank**

Delete BY N cardinal pillar Lt buoy **North One Fathom** Q in 51°20'·93N 3°12'·19W. This buoy has moved outside the W extent of this chart. (ILNW 572/18)

2600+11 (Ed 12/2016) WGS 84

**Thorn Point N**

Insert lgd *Scientific Instruments* centred on 51°41'·61N 5°06'·41W (ILNW 656/18)

2700+1 (Ed 5/2016) WGS 84

**Holyhead Deep**

Amend Y superbuoy name **F** to Lt desc. Fl(4)Y.15s in 53°17'·80N 4°47'·76W (ILNW 521/18)

**Holyhead Deep**

Insert racon sym & assoc. lgd *A/S* at Y Lt superbuoy Fl(4)Y.15s in 53°17'·80N 4°47'·76W (ILNW 566/18)

**Holy Island SW**

Insert Y special pillar Lt buoy Fl(5)Y.20s in 53°15'·48N 4°43'·26W (ILNW 568/18)

**Holyhead (Plan A)**

Holyhead Marina has suffered extensive storm damage and there are numerous obstructions in the area. The jetties are being reconstructed.

Delete Lt 2F.R(vert) in 53°19'·32N 4°38'·64W.

Yachtsmen are advised to contact the local Harbour Authority for further information. (ILNW 596/18)

**Holyhead Bay**

Insert Y special spher. Lt buoy Fl(5)Y.20s (2 buoys) in 53°22'·37N 4°41'·84W (ILNW 642/18)



**Blackpool NW**

Replace depth 5.7m with Y special pillar Lt buoy FI.Y in 53°51'·67N 3°06'·20W. This buoy marks an obstn and seaward limit of an outfall. (ILNW 721/18)

2700+2 (Ed 5/2016) WGS 84

**Seacombe (Plan A)**

Delete Lt Y in 53°24'·61N 3°00'·91W (ILNW 691/18)

2700+3 (Ed 5/2016) WGS 84

**Holyhead Deep**

Amend Y superbuoy name **F** to Lt desc. FI(4)Y.15s in 53°17'·80N 4°47'·76W (ILNW 521/18)

**Holyhead Deep**

Insert racon sym & assoc. lgd A/S at Y Lt superbuoy FI(4)Y.15s in 53°17'·80N 4°47'·76W (ILNW 566/18)

**Holy Island SW**

Insert Y special pillar Lt buoy FI(5)Y.20s in 53°15'·48N 4°43'·26W (ILNW 568/18)

**Holyhead Bay**

Insert Y special spher. Lt buoy FI(5)Y.20s (2 buoys) in 53°22'·37N 4°41'·84W (ILNW 642/18)

2700+4 (Ed 5/2016) WGS 84

**Caernarfon Bar**

Move Lt buoy:

**C1** in 53°06'·96N 4°24'·47W to 53°07'·06N 4°24'·52W

**C3** in 53°07'·13N 4°23'·91W to 53°07'·17N 4°23'·95W plus amend Lt desc. Q.G to FI(3)G.10s

**C6** in 53°07'·22N 4°22'·01W to 53°07'·08N 4°21'·74W (ILNW 581/18)

**Caernarfon Bar (Plan E)**

Insert G con Lt buoy **C3** FI(3)G.10s in 53°07'·17N 4°23'·95W (ILNW 582/18)

2700+5 (Ed 5/2016) WGS 84

**Holyhead Deep**

Amend Y superbuoy name **F** to Lt desc. FI(4)Y.15s in 53°17'·80N 4°47'·76W (ILNW 521/18)

**Holyhead Deep**

Insert racon sym & assoc. lgd A/S at Y Lt superbuoy FI(4)Y.15s in 53°17'·80N 4°47'·76W (ILNW 566/18)

**Holy Island SW**

Insert Y special pillar Lt buoy FI(5)Y.20s in 53°15'·48N 4°43'·26W (ILNW 568/18)

2700+6 (Ed 5/2016) WGS 84

**Cardigan Bay**

Insert Y spher. Lt buoy ODAS FI(5)Y.20s in 56°26'·02N 4°47'·99W (ILNW 561/18)

2700+10 (Ed 5/2016) WGS 84

**Holyhead Deep**

Amend Y superbuoy name **F** to Lt desc. FI(4)Y.15s in 53°17'·80N 4°47'·76W (ILNW 521/18)

**Holyhead Deep**

Insert racon sym & assoc. lgd A/S at Y Lt superbuoy FI(4)Y.15s in 53°17'·80N 4°47'·76W (ILNW 566/18)

**Holy Island SW**

Insert Y special pillar Lt buoy FI(5)Y.20s in 53°15'·48N 4°43'·26W (ILNW 568/18)

**Holyhead Bay**

Insert Y special spher. Lt buoy FI(5)Y.20s (2 buoys) in 53°22'·37N 4°41'·84W (ILNW 642/18)

2700+11 (Ed 5/2016) WGS 84

**Cardigan Bay**

Insert Y spher. Lt buoy ODAS FI(5)Y.20s in 56°26'·02N 4°47'·99W (ILNW 561/18)

2900+7 (Ed 4/2013) WGS 84

**Ardrossan (Plan B)**

Insert lit signal station sym. SS(Traffic) in:

55°38'·42N 4°49'·57W

55°38'·49N 4°49'·38W

Delete lgd SS(Traffic) at Control Tr in 55°38'·50N 4°49'·23W (ILNW 731/18)

3200 (Ed 10/2018) WGS 84

**Punta Binibeca SE (3200.24)**

Amend Lt desc. at YB S card Lt Tr Q(6)+LFI.15s10m3M to VQ(6)+LFI.10s10m3M in 39°48'·59N 4°15'·20E (ILNW 687/18)

**Mallorca SW (3200.7, 3200.8, 3200.10 & 3200.25)**

Delete fog signal, Siren(2)12s at Punta de Cala Figuera Lt FI(4)20s45m22M in 39°27'·46N 2°31'·34E (ILNW 705/18)

**Palma (3200.9)**

Insert R port spar Lt buoy FI(3)R.9s in 39°33'·95N 2°38'·33E

Delete Lt FI(3)R.9s in 39°33'·96N 2°38'·36E (ILNW 707/18)

**Formentera (3200.1 & 3200.5)**

Insert limit of marine reserve joining:

38°40'·58N 1°32'·06E

38°42'·16N 1°32'·03E

38°42'·16N 1°35'·40E

38°39'·83N 1°35'·10E

Add lgd *Marine Reserve* (see Note) centred on 38°41'·90N 1°33'·50E (ILNW 715/18)

M3 (Ed 5/2018) WGS 84

**Mahón (Plan E)**

Insert Lt FI(3)R.7s in 39°53'·42N 4°16'·26E (ILNW 591/18)

**Anchorage - Biocenosis**

Further to ILNW 478/18, yachtsmen are advised that biocenosis may be present within all areas covered by this chart. (ILNW 605/18)

**Palma (Plan C)**

The pier near the yacht club has been extended. Insert Lt FI(2+1)R.12s in 39°33'·94N 2°38'·21E. This Lt marks the end of the pier (ILNW 648/18)

**Mallorca SW**

Delete fog signal, Siren(2)12s at Pta de Cala Figuera Lt FI(4)20s45m22M in 39°27'·5N 2°31'·3E (ILNW 705/18)

**Palma (Plan C)**

Insert R port spar Lt buoy FI(3)R.9s in 39°33'·95N 2°38'·33E  
Delete Lt FI(3)R.9s in 39°33'·97N 2°38'·36E (ILNW 707/18)

**Isla Formentera**

Insert limit of marine reserve joining:

38°40'·58N 1°32'·06E

38°42'·16N 1°32'·03E

38°42'·16N 1°35'·40E

38°39'·83N 1°35'·10E

Add assoc. lgd *Marine Reserve* (see Note). (ILNW 715/18)

M10 (Ed 3/2011) WGS 84

**Tunisia, Gulf of Gabès**

Insert Lt FI.WR.22/15M in 34°17'·3N 10°05'·6E (ILNW 533/18)

**Scog Africa**

Amend range of Lt FI.12M to 7M in 42°21'·5N 10°03'·1E (ILNW 671/18)

M11 (Ed 7/2015) WGS 84

**Tunisia, Gulf of Gabès**

Insert Lt FI.WR.22/15M in 34°17'·3N 10°05'·6E (ILNW 533/18)

**Notification of new edition**

A new November 2018 edition of this chart will shortly be published. In addition to the listed corrections the chart specification has been improved to show coloured light flashes. Continuing harbour developments at Gibraltar and completed harbour developments at Almería are included. Marine reserves have been updated. There has been general updating throughout.  
(ILNW 639/18)

M12 (Ed 4/2018) WGS 84

**Alicante (Plan C)**

Move Lt FI(2+1)R.14·5s in 38°19'·94N 0°29'·38W to 38°19'·93N 0°29'·39W

Following land reclamation works this Lt marks the new corner of the RoRo quay. (ILNW 658/18)

**Isla Formentera**

Insert limit of marine reserve joining:

38°40'·58N 1°32'·06E

38°42'·16N 1°32'·03E

38°42'·16N 1°35'·40E

38°39'·83N 1°35'·10E

Add assoc. lgd *Marine Reserve* (see Note). (ILNW 715/18)

M13 (Ed 1/2016) WGS 84

**Barcelona Harbour (Plan D)**

Insert G starboard pillar Lt buoy FI(3)G.9s in 41°20'·06N 2°10'·12E. Delete Lt FI(3)G.9s3M close E  
(ILNW 548/18)

**Isla Formentera**

Insert limit of marine reserve joining:

38°40'·58N 1°32'·06E

38°42'·16N 1°32'·03E

38°42'·16N 1°35'·40E

38°39'·83N 1°35'·10E

Add assoc. lgd *Marine Reserve* (see Note). (ILNW 715/18)

M14 (Ed 4/2017) WGS 84

**Golfe du Lion**

Delete racon sym & assoc. lgd A/S at Y special spher. Lt buoy FI(5)Y.20s in 43°01'·7N 3°19'·6E (ILNW 534/18)

**Golfe du Lion**

Insert Y pillar Lt buoy ODAS FI(5)Y.20s in 42°57'·0N 3°45'·0E (ILNW 547/18)

**Barcelona Harbour (Plan A)**

Insert G starboard pillar Lt buoy FI(3)G.9s in 41°20'·06N 2°10'·12E. Delete Lt FI(3)G.9s3M close E  
Delete G starboard spar Lt buoy Q.G.3M in 41°20'·27N 2°10'·19E. (ILNW 548/18)

**Sainte-Marie**

Amend Lt desc. FI(5)R&G.5/4M to FI.G.4s4M&FI.R.4s6M in 42°43'·3N 3°02'·4E (ILNW 601/18)

**Narbonne-Plage**

Amend Lt desc. FI.R&G.4s to FI(3)R&G.12s in 43°10'·0N 3°11'·1E (ILNW 602/18)

**Golfe de Fos S (Main chart & Plan J)**

Insert Y special pillar Lt buoy ODAS FI(5)Y.20s in 43°18'·85N 4°55'·26E (ILNW 734/18)

M15 (Ed 4/2015) WGS 84

**Île de Ratonneau SW (Plan A)**

Delete dangerous wreck symbol in 43°16'·78N 5°17'·48E (ILNW 589/18)

**Toulon S**

Insert circular dangerline, radius 1M, centred on 42°48'·0N 6°10'·0E plus assoc. lgd *Scientific Instruments*. (ILNW 735/18)

M16 (Ed 7/2016) WGS 84

**La Spezia S**

Insert dangerous Wk sym. in:

44°00'·7N 9°51'·9E

44°02'·0N 9°56'·0E (ILNW 571/18)

**Approaches to Genova (Plan B)**

Move Lt FI.G.4s in 44°23'·60N 8°56'·10E to 44°23'·54N 8°56'·34E plus add range 8M (ILNW 685/18)

M17 (Ed 4/2017) WGS 84

**Approaches to Civitavecchia (Plan C)**

Add Lt desc. FI.R.3s15m5M at Lt in 42°07'·33N 11°45'·20E (ILNW 550/18)

**Scog. Africa**

Amend range of Lt FI.5s19m12M to 7M in 42°21'·6N 10°03'·9E (ILNW 671/18)

M19 (Ed 11/2010) WGS 84

**Gioia Tàuro**

Delete racon sym. and assoc. lgd Racon(G) at Lt FI.R.8M in 38°26'·60N 15°53'·48E (ILNW 549/18)

**Notification of new edition**

A new November 2018 edition of this chart will shortly be published. In addition to the listed corrections the chart specification has been improved to show coloured light flashes. The Vibo Valentia harbour plan has been updated. There has been general updating throughout. (ILNW 638/18)

M20 (Ed 3/2011) WGS 84

**Tunisia, Gulf of Gabès**

Insert Lt Fl.WR.22/15M in 34°17'·3N 10°05'·6E (ILNW 533/18)

**Scog Africa**

Amend range of Lt Fl.12M to 7M in 42°21'·5N 10°03'·1E (ILNW 671/18)

M21 (Ed 1/2011) WGS 84

**Iskenderun Körfezi**

Amend Lt Fl(3)G.6s3M to Fl(3)R&G.6s3M in 36°41'·1N 36°11'·8E (ILNW 595/18)

M22 (Ed 7/2018) WGS 84

**Ashqelon W**

Insert limit of recommended route, joining:

31°42'·3N 34°23'·0E (existing limit)

31°40'·3N 34°27'·0E (existing limit)

Delete limit of recommended route, joining:

31°42'·3N 34°23'·0E (existing limit)

31°32'·6N 34°19'·7E

31°28'·3N 34°22'·8E (coast)

and

31°40'·3N 34°27'·0E (existing limit)

31°33'·1N 34°24'·6E

31°31'·7N 34°25'·8E (coast) (ILNW 584/18)

M24 (Ed 12/2014) WGS 84

**O. Oruda N**

Insert BY N cardinal Bn in 44°33'·64N 14°34'·87E

Replace BY N cardinal Bn with BYB E cardinal Bn in 44°33'·52N 14°25'·02E (ILNW 604/18)

**Rovinj (Plan A)**

Insert Lt Fl.G in 45°04'·58N 13°38'·01E (ILNW 649/18)

**Medulinski Zaliv (Plan C)**

Insert BYB E cardinal Lt Bn VQ(3)5s in 44°46'·9N 13°56'·3E (ILNW 651/18)

**Otok Cres SE**

Replace depth 4·5m with depth 3·1m in 44°38'·79N 14°32'·08E (ILNW 652/18)

**Otok Pag NW**

Replace BRB isolated danger Bn with BRB isolated danger Lt Bn Fl(2)5s at Rt Lun in 44°41'·78N

14°43'·78E (ILNW 704/18)

M25 (Ed 6/2017) WGS 84

**Uvala Vrnaža (Plan F)**

A new breakwater has been constructed on the N shore of Uvala Vrnaža in 43°43'·31N 15°54'·20E and extends to the point marked by the following Lt:

Insert Lt Fl(2)R.5s in 43°43'·28N 15°54'·13E (ILNW 603/18)

**O. Oruda N**

Insert BY N cardinal Bn in 44°33'·64N 14°34'·87E

Replace BY N cardinal Bn with BYB E cardinal Bn in 44°33'·52N 14°25'·02E (ILNW 604/18)

**Otok Cres SE**

Replace depth 4·5m with depth 3·1m in 44°38'·79N 14°32'·08E (ILNW 652/18)

**Virsko More**

Insert R Lt Bn Fl(2)R.5s6m3M in 44°18'·09N 14°44'·37E

Replace BRB isolated danger Bn with BRB isolated danger Lt Bn Fl(2)5s in 44°11'·5N 14°58'·8E (ILNW 653/18)

**Otok Pag NW**

Replace BRB isolated danger Bn with BRB isolated danger Lt Bn Fl(2)5s at Rt Lun in 44°41'·78N 14°43'·78E (ILNW 704/18)

M26 (Ed 6/2017) WGS 84

**Trogirski Kanal (Plan B)**

The new bridge between the N and S shore of Trogirski Kanal is now open. Insert bridge between 43°31'·18N 16°15'·89E (N border) and 43°31'·01N 16°15'·90E.

Delete Lt Fl.G.2s8m4M in 43°30'·69N 16°14'·26E (ILNW 641/18)

M32 (Ed 9/2015) WGS 84

**Porto di Ortona (Plan A)**

Delete lgd *Works in progress (2015)* centred on 42°21'·15N 14°24'·71E (ILNW 580/18)

**Bari Porto Nuovo (Plan H)**

Works are underway to complete port facilities, including land reclamation and constructing a new wharf around the Pizzoli and Marisabella area of the port. Yachtsmen are advised to navigate with caution in the vicinity.

Insert limit of restricted area, entry prohibited, joining:

41°07'·84N 16°51'·69E

41°07'·85N 16°51'·73E

41°08'·04N 16°51'·81E

41°08'·08N 16°51'·54E

41°08'·05N 16°51'·51E

41°07'·85N 16°51'·53E

Add assoc lgd *Works in progress*. (ILNW 736/18)

M36 (Ed 7/2016) WGS 84

**Grand Harbour (Plan D)**

Move R can Lt buoy Q(3)R.5s in 35°53'·48N 14°30'·83E to 35°53'·47N 14°30'·81E (ILNW 564/18)

M40 (Ed 6/2014) WGS 84

**La Spezia S**

Insert dangerous Wk sym. in:

44°00'·7N 9°51'·9E

44°02'·0N 9°56'·0E (ILNW 571/18)

**Scog. Africa**

Amend range of Lt Fl.5s12M to 7M in 42°21'·6N 10°03'·9E (ILNW 671/18)

**Toulon S**

Insert circular dangerline, radius 1M, centred on 42°48'·0N 6°10'·0E plus assoc. lgd *Scientific Instruments*. (ILNW 735/18)

M45 (Ed 8/2015) WGS 84

**Scog. Africa**

Amend range of Lt Fl.5s19m12M to 7M in 42°21'·5N 10°03'·9E (ILNW 671/18)

G1 (Ed 3/2017) WGS 84

**Vóron Stenón Kérkiras (Plan A)**

Insert unlit mooring buoy sym. in 39°45'·61N 19°57'·05E (ILNW 538/18)

**Approaches to Pátras (Plan C)**

Work is now complete at the Southern Passenger Port.

Move Lt Fl.R.5s8m9M in 38°13'·41N 21°42'·75E to 38°13'·30N 21°42'·71E. This marks the southern extent of the outer breakwater. (ILNW 720/18)

G11 (Ed 2/2017) WGS 84

**Vóron Stenó Kérkiras (Plan B)**

Insert unlit mooring buoy sym. in 39°45'·61N 19°57'·05E (ILNW 538/18)

**N. Levkas, Vasilikí**

Insert Lt Fl.R.3s3M in 38°37'·57N 20°36'·19E

Delete lgd *Works in progress (2017)* centred on 38°38'·1N 20°36'·9E (ILNW 726/18)

G12 (Ed 7/2014) WGS 84

**Notification of new edition**

A new January 2019 edition of this chart will shortly be published. In addition to the listed corrections the chart specification has been improved to show coloured light flashes. The display of buoyage within the Levkas Canal has been improved. Submarine cables and firing practice areas have been updated. There has been general updating throughout. (ILNW 709/18)

G121 (Ed 1/2014) WGS 84

**Notification of new edition**

A new January 2019 edition of this chart will shortly be published. In addition to the listed corrections the chart specification has been improved to show coloured light flashes. The display of buoyage within the Levkas Canal has been improved. The latest harbour developments at Vasilikí (N. Levkas) are included. Submarine cables and firing practice areas have been updated. There has been general updating throughout. (ILNW 709/18)

G13 (Ed 3/2016) WGS 84

**Órmos Isidhorou (Plan F)**

Replace depth 5m with Lt F.R&F.G in 38°21'·83N 22°37'·06E (ILNW 716/18)

**Órmos Germenouí**

Insert dangerous Wk sym in 38°08'·79N 23°13'·20E (ILNW 717/18)

G14 (Ed 3/2015) WGS 84

**Notification of new edition**

A new January 2019 edition of this chart will shortly be published. In addition to the listed corrections the chart specification has been improved to show coloured light flashes. Submarine cables have been updated. There has been general updating throughout. (ILNW 697/18)

G141 (Ed 1/2014) WGS 84

**Notification of new edition**

A new January 2019 edition of this chart will shortly be published. In addition to the listed corrections the chart specification has been improved to show coloured light flashes. Submarine cables have been updated and firing practice areas have been added. Numerous harbour developments have been included. There has been general updating throughout. (ILNW 696/18)

G16 (Ed 12/2014) WGS 84

**Notification of new edition**

A new January 2019 edition of this chart will shortly be published. In addition to the listed corrections the chart specification has been improved to show coloured light flashes. A harbour plan of Koróni is now included on this chart. The latest depth surveys have been included where available. Submarine cables and firing practice areas have been updated. There has been general updating throughout. (ILNW 698/18)

G2 (Ed 8/2013) WGS 84

**Çanakkale Boğazi (Plan C)**

Delete label *Landing Prohib.* centred on 39°59'·41N 26°08'·39E plus assoc. restricted area limit joining:

40°03'·31N 26°10'·00E

40°03'·31N 26°06'·98E

39°58'·23N 26°06'·93E

39°58'·24N 26°10'·25E

and

40°03'·12N 26°12'·24E

40°00'·16N 26°13'·79E (ILNW 551/18)

**Marmara Denizi**

Amend range of Lt Hayirsizada Fl.3s10M to 7M in 40°47'·5N 29°15'·7E (ILNW 671/18)

G22 (Ed 5/2018) WGS 84

**Entrance to Çanakkale Boğazi**

Delete restricted area limit joining:

40°03'·24N 26°09'·91E

40°03'·26N 26°07'·24E

39°58'·26N 26°07'·21E

39°58'·24N 26°10'·23E

and

40°03'·17N 26°12'·24E

40°00'·11N 26°13'·80E (ILNW 551/18)

**Entrance to Çanakkale Boğazi (Plan C)**

There have been numerous changes to the restricted areas around the entrance to Çanakkale Boğazi.

Between Taşlı Br. 39°58'·20N 26°10'·30E and 40°00'·21N 26°13'·75E, extending 1000m seawards from the coast, unauthorised entry of foreign flagged vessels is prohibited.

Extend limit of anchoring and fishing prohibited area N from 39°58'·15N 26°09'·37E to Tekke Br. in 40°03'·16N 26°09'·94E

Delete label *Anchoring, Fishing Diving and Landing Prohibited* centred on 40°01'·10N 26°08'·50E plus assoc. restricted area limit. (ILNW 552/18)

G23 (Ed 8/2018) WGS 84

**Aydinli Limani**

Insert lgd *Works in Progress (2018)* centred on 40°50'·8N 29°15'·6E (ILNW 620/18)

**Tuzla Körfezi**

Amend range of Lt Hayirsizada Fl.3s10M to 7M in 40°47'·4N 29°15'·8E (ILNW 672/18)

G31 (Ed 3/2014) WGS 84

G31

**Notification of new edition**

A new January 2019 edition of this chart will shortly be published. In addition to the listed corrections the chart specification has been improved to show coloured light flashes. Submarine cables have been updated. There has been general updating throughout.

[Imray] (ILNW 695/18)



G35 (Ed 4/2016) WGS 84

**Marmaris Limani**

Amend Lt desc. at BRB isolated danger pillar Lt buoy FI(2)4s to 5s in 36°46'·33N 28°23'·75E (ILNW 531/18)

**Nísos Tílos E**

Insert dangerous Wk sym. in 36°24'·79N 27°23'·60E (ILNW 532/18)

**Ródhos (Rhodes)**

Replace R and W Lt sectors with W halo at Lt FI(2)12s24m11M in 36°27'·08N, 28°13'·61E (ILNW 676/18)

G36 (Ed 5/2015) WGS 84

**Turnali Kayasi**

Amend Lt desc. at BRB isolated danger pillar Lt buoy FI(2)4s to 5s in 36°46'·06N 28°23'·74E (ILNW 531/18)

G37 (Ed 9/2017) WGS 84

**Ák. Dhrépanon SE**

Move Y pillar Lt buoy plus racon sym. FI.Y.4s A/S in 35°27'·68N 24°15'·51E to 35°27'·93N 24°15'·87E (ILNW 673/18)

G40 (Ed 6/2014) WGS 84

**Antalya Körfezi**

Insert Y special spher Lt buoy FI(5)Y.20s in 36°44'·3N 31°00'·2E (ILNW 650/18)

E1 (Ed 6/2016) WGS 84

**São Miguel**

Amend Lt **Ponta do Amel** FI.5s65m25M to FI(2)10s65m19M in 37°49'·45N 25°08'·13W (ILNW 703/18)

E2 (Ed 10/2018) WGS 84

**Lanzarote, Puerto Calero**

Amend range of Lt VQ(6)+LFI.10s5M to 7M in 28°55'·01N 13°42'·00W (ILNW 621/18)

**Lanzarote, Puerto Calero**

Amend range of Lt FI(3)G.6M to 8M in 28°54'·92N 13°42'·40W (ILNW 629/18)

E3 (Ed 3/2011) WGS 84

**Quinta do Lorde (Plan F)**

The pontoon emanating from the southern breakwater has been demolished. Delete 3-point pontoon joining southern breakwater and:

32°44'·47N 16°42'·64W

32°44'·46N 16°42'·74W (ILNW 577/18)

1 (Ed 8/2012) WGS 84

**Golfo de Paria, Islas Patos**

Amend range of Lt from 20M to 25M in 10°38'·3N 61°52'·0W (ILNW 609/18)

**Venezuela, Pts Unare**

Amend duration of Lt to 10s in 10°05'·5N 65°10'·8W (ILNW 689/18)

## **Bocas del Dragon**

Insert dangerous Wk sym. & assoc. lgd *PA* in 10°45'·0N 61°47'·0W (ILNW 690/18)

A (Ed 9/2006) WGS 84

### **AIDS TO NAVIGATION**

Chartered aids to navigation throughout the Eastern Caribbean should be used with caution. Many aids to navigation either moved or were destroyed during recent hurricanes in this region. The replacements and repositioning of these aids is progressing slowly. Yachtsmen are advised to use visual navigation. (Street 2018) (ILNW 574/18)

A2 (Ed 3/2016) WGS 84

### **AIDS TO NAVIGATION**

Chartered aids to navigation throughout the Eastern Caribbean should be used with caution. Many aids to navigation either moved or were destroyed during recent hurricanes in this region. The replacements and repositioning of these aids is progressing slowly. Yachtsmen are advised to use visual navigation. (Street 2018) (ILNW 574/18)

A23 (Ed 1/2013) WGS 84

### **AIDS TO NAVIGATION**

Chartered aids to navigation throughout the Eastern Caribbean should be used with caution. Many aids to navigation either moved or were destroyed during recent hurricanes in this region. The replacements and repositioning of these aids is progressing slowly. Yachtsmen are advised to use visual navigation. (Street 2018) (ILNW 574/18)

A231 (Ed 10/2016) WGS 84

### **AIDS TO NAVIGATION**

Chartered aids to navigation throughout the Eastern Caribbean should be used with caution. Many aids to navigation either moved or were destroyed during recent hurricanes in this region. The replacements and repositioning of these aids is progressing slowly. Yachtsmen are advised to use visual navigation. (Street 2018) (ILNW 574/18)

A232 (Ed 10/2016) WGS 84

### **AIDS TO NAVIGATION**

Chartered aids to navigation throughout the Eastern Caribbean should be used with caution. Many aids to navigation either moved or were destroyed during recent hurricanes in this region. The replacements and repositioning of these aids is progressing slowly. Yachtsmen are advised to use visual navigation. (Street 2018) (ILNW 574/18)

A233 (Ed 10/2016) WGS 84

### **AIDS TO NAVIGATION**

Chartered aids to navigation throughout the Eastern Caribbean should be used with caution. Many aids to navigation either moved or were destroyed during recent hurricanes in this region. The replacements and repositioning of these aids is progressing slowly. Yachtsmen are advised to use visual navigation. (Street 2018) (ILNW 574/18)

A3 (Ed 10/2012) WGS 84

### **AIDS TO NAVIGATION**

Chartered aids to navigation throughout the Eastern Caribbean should be used with caution. Many aids to navigation either moved or were destroyed during recent hurricanes in this region. The replacements and repositioning of these aids is progressing slowly. Yachtsmen are advised to use visual navigation. (Street 2018) (ILNW 574/18)

## **Antigua E**

Insert Rk awash sym in 17°06'·7N 61°41'·4W (ILNW 661/18)

A4 (Ed 7/2006) WGS 84

### **AIDS TO NAVIGATION**

Chartered aids to navigation throughout the Eastern Caribbean should be used with caution. Many aids to navigation either moved or were destroyed during recent hurricanes in this region. The replacements and repositioning of these aids is progressing slowly. Yachtsmen are advised to use visual navigation. (Street 2018) (ILNW 574/18)

## **Saint Lucia S**

Insert dangerous underwater Rk sym in 13°44'·2N 60°59'·7W (ILNW 660/18)

A24 (Ed 6/2016) WGS 84

### **AIDS TO NAVIGATION**

Chartered aids to navigation throughout the Eastern Caribbean should be used with caution. Many aids to navigation either moved or were destroyed during recent hurricanes in this region. The replacements and repositioning of these aids is progressing slowly. Yachtsmen are advised to use visual navigation. (Street 2018) (ILNW 574/18)

### **AIDS TO NAVIGATION**

Chartered aids to navigation throughout the Eastern Caribbean should be used with caution. Many aids to navigation either moved or were destroyed during recent hurricanes in this region. The replacements and repositioning of these aids is progressing slowly. Yachtsmen are advised to use visual navigation. (Street 2018) (ILNW 574/18)

## **Simpson Bay Lagoon (Plan E)**

Add note to plan:

### **CAUTION**

Simpson Bay Lagoon has numerous sunken wrecks, most of which are marked by small buoys. (Street 2018) (ILNW 576/18)

A25 (Ed 2/2012) WGS 84

### **AIDS TO NAVIGATION**

Chartered aids to navigation throughout the Eastern Caribbean should be used with caution. Many aids to navigation either moved or were destroyed during recent hurricanes in this region. The replacements and repositioning of these aids is progressing slowly. Yachtsmen are advised to use visual navigation. (Street 2018) (ILNW 574/18)

A26 (Ed 11/2006) WGS 84

### **AIDS TO NAVIGATION**

Chartered aids to navigation throughout the Eastern Caribbean should be used with caution. Many aids to navigation either moved or were destroyed during recent hurricanes in this region. The replacements and repositioning of these aids is progressing slowly. Yachtsmen are advised to use visual navigation. (Street 2018) (ILNW 574/18)

A27 (Ed 12/2015) WGS 84

### **AIDS TO NAVIGATION**

Chartered aids to navigation throughout the Eastern Caribbean should be used with caution. Many aids to navigation either moved or were destroyed during recent hurricanes in this region. The replacements and repositioning of these aids is progressing slowly. Yachtsmen are advised to use visual navigation. (Street 2018) (ILNW 574/18)

## **Pelican Island NE**

Insert dangerous underwater Rk sym in:

17°06'·85N 61°41'·67W  
17°06'·41N 61°41'·55W  
Insert Rk awash sym in 17°06'·70N 61°41'·38W (ILNW 661/18)

**Dums Point NW & Nonsuch Bay (Main chart & Plan C)**

Insert dangerous underwater Rk sym in:

17°06'·35N 61°41'·30W  
17°04'·47N 61°41'·58W  
17°04'·23N 61°41'·30W (ILNW 662/18)

A271 (Ed 6/2017) WGS 84

**AIDS TO NAVIGATION**

Charted aids to navigation throughout the Eastern Caribbean should be used with caution. Many aids to navigation either moved or were destroyed during recent hurricanes in this region. The replacements and repositioning of these aids is progressing slowly. Yachtsmen are advised to use visual navigation. (Street 2018) (ILNW 574/18)

**Pelican Island NE**

Insert dangerous underwater Rk sym in:

17°06'·85N 61°41'·67W  
17°06'·41N 61°41'·55W  
17°06'·35N 61°41'·30W  
Insert Rk awash sym in 17°06'·70N 61°41'·38W (ILNW 661/18)

A28 (Ed 1/2017) WGS 84

**AIDS TO NAVIGATION**

Charted aids to navigation throughout the Eastern Caribbean should be used with caution. Many aids to navigation either moved or were destroyed during recent hurricanes in this region. The replacements and repositioning of these aids is progressing slowly. Yachtsmen are advised to use visual navigation. (Street 2018) (ILNW 574/18)

**Rivière Salée (Plan E)**

Replace note **OPENING BRIDGES - RIVIÈRE SALÉE** with the following note:

**RIVIÈRE SALÉE BRIDGES**

The Rivière Salée is closed to navigation to mast vessels. What were previously opening bridges are now fixed bridges. (Street 2018) (ILNW 575/18)

**Les Saintes, Terre-de-Haut**

Replace depth 0·4m with Rk awash sym in 15°52'·83N 61°35'·21W  
Delete anchorage sym in 15°51'·79N 61°36'·09W (ILNW 592/18)

A281 (Ed 11/2006) WGS 84

**AIDS TO NAVIGATION**

Charted aids to navigation throughout the Eastern Caribbean should be used with caution. Many aids to navigation either moved or were destroyed during recent hurricanes in this region. The replacements and repositioning of these aids is progressing slowly. Yachtsmen are advised to use visual navigation. (Street 2018) (ILNW 574/18)

**Northern Approach to Pointe-à-Pitre (Inset)**

Add note to plan:

**RIVIÈRE SALÉE BRIDGES**

The Rivière Salée is closed to navigation to mast vessels. What were previously opening bridges are now fixed bridges. (Street 2018) (ILNW 575/18)

**Les Saintes, Terre-de-Haut**

Replace depth 0·4m with Rk awash sym in 15°52'·83N 61°35'·21W

Anchoring is prohibited in Anse à Cointe. Insert restricted area line, no anchoring, between 15°51'·88N 61°36'·00W (Pain de Sucre) and 15°51'·58N 61°36'·22W (Pointe à Cointe). Delete anchorage sym in 15°51'·83N 61°36'·03W (ILNW 592/18)

A29 (Ed 9/2006) WGS 84

**AIDS TO NAVIGATION**

Charted aids to navigation throughout the Eastern Caribbean should be used with caution. Many aids to navigation either moved or were destroyed during recent hurricanes in this region. The replacements and repositioning of these aids is progressing slowly. Yachtsmen are advised to use visual navigation. (Street 2018) (ILNW 574/18)

A30 (Ed 3/2018) WGS 84

**AIDS TO NAVIGATION**

Charted aids to navigation throughout the Eastern Caribbean should be used with caution. Many aids to navigation either moved or were destroyed during recent hurricanes in this region. The replacements and repositioning of these aids is progressing slowly. Yachtsmen are advised to use visual navigation. (Street 2018) (ILNW 574/18)

A301 (Ed 12/2006) WGS 84

**AIDS TO NAVIGATION**

Charted aids to navigation throughout the Eastern Caribbean should be used with caution. Many aids to navigation either moved or were destroyed during recent hurricanes in this region. The replacements and repositioning of these aids is progressing slowly. Yachtsmen are advised to use visual navigation. (Street 2018) (ILNW 574/18)

B (Ed 9/2016) WGS 84

**AIDS TO NAVIGATION**

Charted aids to navigation throughout the Eastern Caribbean should be used with caution. Many aids to navigation either moved or were destroyed during recent hurricanes in this region. The replacements and repositioning of these aids is progressing slowly. Yachtsmen are advised to use visual navigation. (Street 2018) (ILNW 574/18)

**Golfo de Paria, Islas Patos**

Amend range of Lt from 20M to 25M in 10°38'·3N 61°52'·0W (ILNW 609/18)

**Bocas del Dragon**

Insert dangerous Wk sym. & assoc. lgd PA in 10°45'·0N 61°47'·0W (ILNW 690/18)

B1 (Ed 7/2013) WGS 84

**AIDS TO NAVIGATION**

Charted aids to navigation throughout the Eastern Caribbean should be used with caution. Many aids to navigation either moved or were destroyed during recent hurricanes in this region. The replacements and repositioning of these aids is progressing slowly. Yachtsmen are advised to use visual navigation. (Street 2018) (ILNW 574/18)

**Laborie S**

Insert dangerous underwater Rk sym in 13°44'·21N 60°59'·68W (ILNW 660/18)

**Grand Cul de Sac Bay (Plan C)**

Shallower depths than charted exist in Grand Cul de Sac Bay. Yachtsmen should exercise caution when in this area. Insert label *Less Water* centred on 13°59'·19N 61°00'·82W (ILNW 663/18)

B2 (Ed 5/2018) WGS 84

**AIDS TO NAVIGATION**

Charted aids to navigation throughout the Eastern Caribbean should be used with caution. Many aids to navigation either moved or were destroyed during recent hurricanes in this region. The replacements and repositioning of these aids is progressing slowly. Yachtsmen are advised to use visual navigation. (Street 2018) (ILNW 574/18)

B3 (Ed 12/2015) WGS 84

**AIDS TO NAVIGATION**

Charted aids to navigation throughout the Eastern Caribbean should be used with caution. Many aids to navigation either moved or were destroyed during recent hurricanes in this region. The replacements and repositioning of these aids is progressing slowly. Yachtsmen are advised to use visual navigation. (Street 2018) (ILNW 574/18)

B30 (Ed 2/2017) WGS 84

**AIDS TO NAVIGATION**

Charted aids to navigation throughout the Eastern Caribbean should be used with caution. Many aids to navigation either moved or were destroyed during recent hurricanes in this region. The replacements and repositioning of these aids is progressing slowly. Yachtsmen are advised to use visual navigation. (Street 2018) (ILNW 574/18)

B31 (Ed 10/2015) WGS 84

**AIDS TO NAVIGATION**

Charted aids to navigation throughout the Eastern Caribbean should be used with caution. Many aids to navigation either moved or were destroyed during recent hurricanes in this region. The replacements and repositioning of these aids is progressing slowly. Yachtsmen are advised to use visual navigation. (Street 2018) (ILNW 574/18)

B311 (Ed 12/2017) WGS 84

**AIDS TO NAVIGATION**

Charted aids to navigation throughout the Eastern Caribbean should be used with caution. Many aids to navigation either moved or were destroyed during recent hurricanes in this region. The replacements and repositioning of these aids is progressing slowly. Yachtsmen are advised to use visual navigation. (Street 2018) (ILNW 574/18)

B32 (Ed 9/2017) WGS 84

**AIDS TO NAVIGATION**

Charted aids to navigation throughout the Eastern Caribbean should be used with caution. Many aids to navigation either moved or were destroyed during recent hurricanes in this region. The replacements and repositioning of these aids is progressing slowly. Yachtsmen are advised to use visual navigation. (Street 2018) (ILNW 574/18)

B4 (Ed 4/2009) WGS 84

**AIDS TO NAVIGATION**

Charted aids to navigation throughout the Eastern Caribbean should be used with caution. Many aids to navigation either moved or were destroyed during recent hurricanes in this region. The replacements and repositioning of these aids is progressing slowly. Yachtsmen are advised to use visual navigation. (Street 2018) (ILNW 574/18)

**Minister Rock W**

Move YB S cardinal pillar Lt buoy Q(6)+LFI.15s in 11°09'·82N 60°42'·17W to 11°09'·71N 60°42'·25W (ILNW 635/18)

B5 (Ed 2/2018) WGS 84

**AIDS TO NAVIGATION**

Charted aids to navigation throughout the Eastern Caribbean should be used with caution. Many aids to navigation either moved or were destroyed during recent hurricanes in this region. The replacements and repositioning of these aids is progressing slowly. Yachtsmen are advised to use visual navigation. (Street 2018) (ILNW 574/18)

**Saint Lucia S**

Insert dangerous underwater Rk sym in 13°44'·2N 60°59'·7W (ILNW 660/18)

B6 (Ed 5/2009) WGS 84

**AIDS TO NAVIGATION**

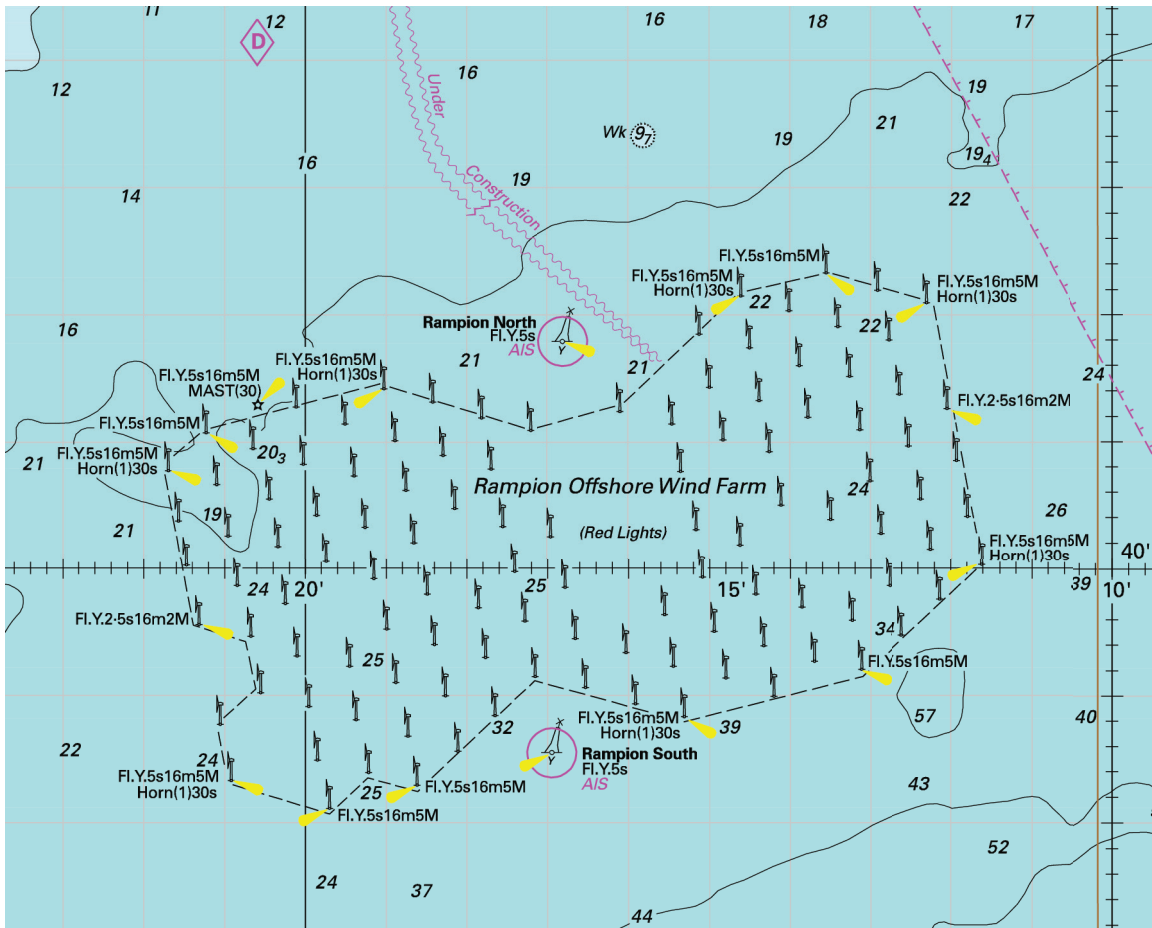
Charted aids to navigation throughout the Eastern Caribbean should be used with caution. Many aids to navigation either moved or were destroyed during recent hurricanes in this region. The replacements and repositioning of these aids is progressing slowly. Yachtsmen are advised to use visual navigation. (Street 2018) (ILNW 574/18)

**Golfo de Paria, Islas Patos**

Amend range of Lt from 20M to 25M in 10°38'·3N 61°52'·0W (ILNW 609/18)

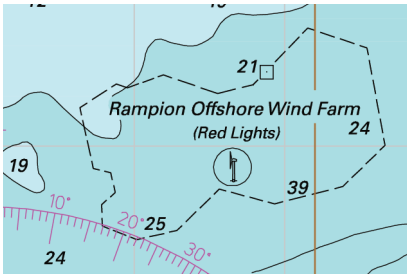
**Bocas del Dragon**

Insert dangerous Wk sym. & assoc. lgd PA in 10°45'·0N 61°47'·0W (ILNW 690/18)

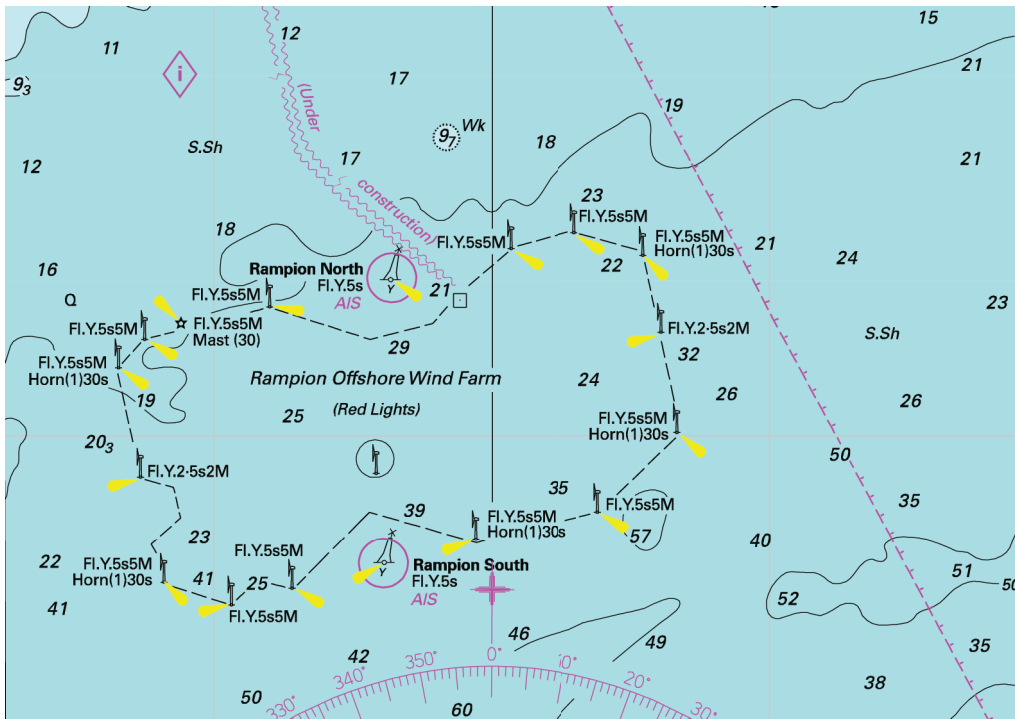


Block correction for C9  
ILNW 513/18





Block correction for C12  
ILNW 513/18



Block correction for 2100.10  
ILNW 513/18