

Imray Laurie Norie & Wilson Ltd

Wych House The Broadway
St Ives Cambridgeshire PE27 5BT
+44 (0)1480 462114

This bulletin contains corrections for the following charts:

C1 (Ed 1/2018)	C67 (Ed 11/2017)	2150 (Ed 2/2019)	M21 (Ed 1/2011)
C2 (Ed 7/2016)	C68 (Ed 7/2017)	2160 (Ed 3/2019)	M22 (Ed 7/2018)
C3 (Ed 5/2018)	C70 (Ed 4/2016)	2200+2 (Ed 4/2018)	M23 (Ed 11/2014)
C4 (Ed 6/2017)	C80 (Ed 5/2018)	2200+5 (Ed 4/2018)	M24 (Ed 12/2014)
C5 (Ed 7/2016)	Y2 (Ed 3/2018)	2200+8 (Ed 4/2018)	M26 (Ed 6/2017)
C7 (Ed 7/2017)	Y7 (Ed 2/2018)	2300+2 (Ed 1/2019)	M30 (Ed 2/2015)
C8 (Ed 9/2017)	Y9 (Ed 3/2018)	2300+4 (Ed 1/2019)	M31 (Ed 8/2015)
C9 (Ed 11/2018)	Y16 (Ed 6/2017)	2300+7 (Ed 1/2019)	M32 (Ed 9/2015)
C10 (Ed 2/2018)	Y17 (Ed 11/2017)	2300+11 (Ed 1/2019)	M33 (Ed 9/2015)
C12 (Ed 2/2018)	Y18 (Ed 4/2016)	2400+3 (Ed 4/2019)	M35 (Ed 5/2014)
C14 (Ed 10/2017)	Y23 (Ed 7/2016)	2400+6 (Ed 4/2019)	M40 (Ed 6/2014)
C18 (Ed 1/2016)	Y31 (Ed 4/2018)	2400+13 (Ed 4/2019)	M45 (Ed 8/2015)
C20 (Ed 6/2018)	Y35 (Ed 4/2018)	2400+15 (Ed 4/2019)	M47 (Ed 5/2018)
C23 (Ed 8/2017)	Y38 (Ed 4/2018)	2400+16 (Ed 4/2019)	M49 (Ed 8/2015)
C25 (Ed 8/2017)	Y39 (Ed 1/2019)	2500+8 (Ed 3/2017)	G11 (Ed 2/2017)
C26 (Ed 4/2017)	Y43 (Ed 4/2019)	2500+10 (Ed 3/2017)	G2 (Ed 8/2013)
C27 (Ed 9/2018)	Y45 (Ed 4/2019)	2500+12 (Ed 3/2017)	G22 (Ed 5/2018)
C28 (Ed 9/2017)	Y49 (Ed 4/2019)	2600+7 (Ed 12/2016)	G23 (Ed 8/2018)
C29 (Ed 9/2016)	Y50 (Ed 4/2019)	2600+8 (Ed 12/2016)	G25 (Ed 2/2009)
C30 (Ed 5/2017)	Y58 (Ed 7/2016)	2700+2 (Ed 5/2016)	G28 (Ed 5/2018)
C30 (Ed 4/2019)	2000+2 (Ed 3/2018)	2700+4 (Ed 5/2016)	G36 (Ed 5/2015)
C31 (Ed 11/2014)	2000+3 (Ed 3/2018)	2700+11 (Ed 5/2016)	E2 (Ed 10/2018)
C32 (Ed 9/2017)	2000+6 (Ed 3/2018)	2800+1 (Ed 11/2012)	E3 (Ed 3/2011)
C33A (Ed 8/2016)	2000+7 (Ed 3/2018)	2800+3 (Ed 11/2012)	A2 (Ed 3/2016)
C33B (Ed 8/2018)	2000+9 (Ed 3/2018)	2800+4 (Ed 11/2012)	A23 (Ed 1/2013)
C36 (Ed 1/2015)	2100+1 (Ed 2/2018)	2800+10 (Ed 11/2012)	A232 (Ed 10/2016)
C37 (Ed 6/2017)	2100+3 (Ed 2/2018)	3200 (Ed 10/2018)	A233 (Ed 10/2016)
C38 (Ed 4/2016)	2100+4 (Ed 2/2018)	M3 (Ed 5/2018)	A3 (Ed 10/2012)
C39 (Ed 8/2017)	2100+5 (Ed 2/2018)	M6 (Ed 11/2016)	A25 (Ed 2/2012)
C41 (Ed 6/2017)	2100+7 (Ed 2/2018)	M7 (Ed 11/2016)	A26 (Ed 11/2006)
C42 (Ed 9/2017)	2100+10 (Ed 2/2018)	M8 (Ed 5/2015)	A28 (Ed 1/2017)
C43 (Ed 2/2014)	2100+11 (Ed 2/2018)	M10 (Ed 3/2011)	B (Ed 9/2016)
C50 (Ed 3/2017)	2100+12 (Ed 2/2018)	M12 (Ed 4/2018)	B1 (Ed 7/2013)
C52 (Ed 9/2015)	2110+2 (Ed 1/2017)	M13 (Ed 1/2016)	B3 (Ed 12/2015)
C55 (Ed 3/2015)	2110+4 (Ed 1/2017)	M14 (Ed 4/2017)	B5 (Ed 2/2018)
C59 (Ed 9/2015)	2110+5 (Ed 1/2017)	M15 (Ed 4/2015)	ESMED150N (Ed 10/2018)
C61 (Ed 3/2016)	2110+9 (Ed 1/2017)	M16 (Ed 7/2016)	
C62 (Ed 7/2016)	2120 (Ed 2/2019)	M17 (Ed 4/2017)	
C65 (Ed 7/2016)	2130 (Ed 3/2019)	M19 (Ed 11/2018)	
C66 (Ed 4/2016)	2140 (Ed 4/2019)	M20 (Ed 3/2011)	

C1 (Ed 1/2018) WGS 84

Galloper Wind Farm

Construction work on the Galloper Wind Farm is now complete. Delete lgd *under const'n (buoyed)* centred on:

51°56'·1N 2°04'·0E

51°46'·5N 2°01'·5E

Insert Y special pillar Lt buoy Fl.Y.5s in 51°54'·03N 2°02'·03E (ILNW 166/19)

Greater Gabbard Wind Farm

Delete Lt Fl.Y.5s and assoc. fog signal, Horn, at wind turbine in:

51°45'·31N 1°59'·70E

51°55'·42N 1°59'·25E

51°58'·65N 1°59'·43E

Delete Lt Fl.Y.5s at wind turbine in:

51°45'·82N 1°59'·89E

51°48'·12N 1°59'·91E

51°56'·48N 1°59'·90E (ILNW 249/19)

Kentish Flats Wind Farm

Delete Y special spher. Lt buoy Fl(5)Y.20s in 51°28'·11N 1°02'·52E (ILNW 281/19)

C2 (Ed 7/2016) WGS 84

Woolwich Reach

Insert YB S cardinal pillar Lt buoy Q(6)+LFl.15s in 51°29'·84N 0°01'·48E (ILNW 231/19)

Northfleet

Amend Lt **Northfleet Upper** Oc.WRG.10s30m16-12M to Oc.WRG.10s39m7-10M in 51°21'·94N 0°20'·06E (ILNW 251/19)

Gravesend Reach

Insert mooring buoy in 51°26'·80N 0°25'·19E (ILNW 261/19)

C3 (Ed 5/2018) WGS 84

Beaulieu River

Delete depth 3·2m in 50°48'·07N 1°25'·33W (ILNW 146/19)

Needles Channel

Insert depth 3·2m in 50°39'·76N 1°36'·96W and extend 5m contour to enclose

Replace depth 2·1m with depth 1·1m in 50°40'·46N 1°36'·56W and extend 2m contour to enclose (ILNW 153/19)

C4 (Ed 6/2017) WGS 84

Portland Harbour (Plan A)

Insert Y special can buoy in 50°35'·11N 2°27'·75W (ILNW 131/19)

C5 (Ed 7/2016) WGS 84

Dartmouth (Plan H)

Insert depth 2·0m in 50°20'·03N 3°33'·08W. Delete depth 2·4m close NW (ILNW 292/19)

C7 (Ed 7/2017) WGS 84

Hugh Town (Plans C & D)

Insert Lt 2F.G(vert) in 49°55'·12N 6°18'·98W (ILNW 257/19)

C8 (Ed 9/2017) WGS 84

Ramsgate Channel E (Main chart & Plan E)

Main chart

Replace depth 5.9m with depth 0.1m in 51°17'·15N 1°25'·02E

Plan E

Insert depth 0.1m in 51°17'·15N 1°25'·02E (ILNW 160/19)

Calais

A new outer breakwater has been constructed at the eastern side of the port of Calais. Insert breakwater joining:

50°58'·5N 1°52'·6E (coast)

50°58'·9N 1°52'·5E

50°59'·0N 1°51'·8E

50°58'·9N 1°51'·3E

50°58'·7N 1°50'·7E

50°58'·6N 1°50'·7E (ILNW 228/19)

Calais (Plan G)

A new outer breakwater has been constructed at the eastern side of the port of Calais. Insert breakwater joining:

50°58'·95N 1°51'·92E (E border)

50°58'·95N 1°51'·82E

50°58'·87N 1°51'·24E

50°58'·67N 1°50'·74E

50°58'·58N 1°50'·66E (ILNW 228/19)

C9 (Ed 11/2018) WGS 84

Outer Owers

Insert *Wk* depth 1.3m in 50°39'·58N 0°41'·19W (ILNW 236/19)

Worthing SE

Insert circular dangerline & assoc. lgd *Obstn (Diffusers)* in 50°46'·32N 0°20'·20W. Insert outfall pipeline from 50°48'·95N 0°20'·34W (shore) to *Obstn (Diffusers)*.

Delete:

Bn in 50°48'·97N 0°20'·25W

Obstn drying height -1.6m in 50°48'·76N 0°20'·02W

Outfall joining the above. (ILNW 250/19)

C10 (Ed 2/2018) WGS 84

Jersey S

Delete RY special spher. Lt buoy **Met Stn 62027 Wave Recorder** Fl(5)Y.20s in 49°04'·9N 2°13'·1W (ILNW 161/19)

Baie de Saint-Brieuc

Delete Y con. Lt buoy **ODAS** Fl(5)Y.20s in 48°53'·3N 2°33'·6W (ILNW 304/19)

C12 (Ed 2/2018) WGS 84

Calais (Main chart & Plan A)

A new outer breakwater has been constructed at the eastern side of the port of Calais. Insert breakwater joining:

50°58'·5N 1°52'·6E (coast)

50°58'·9N 1°52'·5E

50°59'·0N 1°51'·8E

50°58'·7N 1°50'·7E

50°58'·6N 1°50'·7E (ILNW 228/19)

Outer Owers

Insert *Wk* depth 1·3m in 50°39'·6N 0°41'·2W. Delete depth 2·2m close W (ILNW 236/19)

Le Havre-Antifer SW, Fécamp NW & St-Pierre-en-Port N

Insert Y special spar Lt buoy:

C1 FI(5)Y.20s in 49°56'·6N 0°17'·1E

C2 FI(5)Y.20s in 49°55'·7N 0°30'·0E

C3 FI(5)Y.20s in 49°51'·4N 0°14'·2E

H1 FI(5)Y.20s in 49°38'·0N 0°00'·1W

H2 FI(5)Y.20s in 49°51'·9N 0°14'·3E (ILNW 287/19)

C14 (Ed 10/2017) WGS 84

Wembury Bay

Insert lgd *Less water reported* (2019) centred on 50°18'·40N 4°06'·00W (ILNW 235/19)

C18 (Ed 1/2016) WGS 84

Plateau du Four SW

Amend Lt at floating turbine FI(3)Y.15s10M to Mo(U)Y.15s in 47°14'·4N 2°46'·5W. AIS remains unchanged. (ILNW 286/19)

C20 (Ed 6/2018) WGS 84

Port Laâyoune

Amend range of Lt Q(9)15s17M to 10M in 27°05'·7N 13°26'·3W (ILNW 168/19)

C23 (Ed 8/2017) WGS 84

Smith Bank E

Construction works on the Moray East Wind Farm will soon commence.

The construction area is bound by the following positions:

58°18'·1N 2°41'·1W

58°16'·4N 2°36'·8W

58°10'·7N 2°32'·8W

58°07'·2N 2°35'·8W

58°04'·0N 2°52'·1W

58°08'·6N 2°50'·6W

Add assoc. lgd *Moray East Wind Farm under construction* (2019-2022) (*buoyed*).

Cable laying operations will also take place between the wind farm and Boyndie Bay.

Yachtsmen are advised that a safety zone of 500m becomes operational around the turbines under construction. (ILNW 169/19)

Moray Firth

Insert lgd *Scientific Instruments* centred on 57°55'·05N 2°41'·53W (ILNW 247/19)

Aberdeen E

Insert lgd *Scientific Instruments* centred on:

57°15'·17N 1°58'·82W

57°08'·49N 1°55'·37W

57°02'·97N 2°04'·27W (ILNW 252/19)

Montrose E

Insert circular dangerline and legend *Subm buoy* in:

56°45'·74N 2°21'·27W

56°42'·95N 2°10'·96W

56°39'·67N 2°00'·55W

56°36'·60N 1°50'·16W

56°33'·28N 1°40'·06W (ILNW 268/19)

Scar Nose

Amend Lt Ldg2F.2M to Ldg2FI.G.2s3M in 57°42'·32N 2°51'·83W (ILNW 270/19)

C25 (Ed 8/2017) WGS 84

Outer Dowsing NW

Delete YBY W cardinal pillar Lt buoy VQ(9)10s (2 buoys) in 53°37'·75N 0°55'·69E (ILNW 132/19)

Galloper Wind Farm

Construction work on the Galloper Wind Farm is now complete. Delete lgd *under const'n (buoyed)* centred on:

51°56'·1N 2°04'·0E

51°48'·6N 2°05'·4E (ILNW 166/19)

Brown Ridge W

Delete Y spher Lt buoy LIDAR FI(5)Y.20s plus racon sym & assoc. lgd A/S in 52°41'·1N 2°52'·8E (ILNW 229/19)

The Broad Fourteens

Insert Y special spar Lt buoy FI(5)Y.20s in:

52°34'·21N 3°42'·94E

52°34'·20N 3°44'·26E (ILNW 253/19)

Ijmuiden (Plan C)

Delete Y con Lt buoy **NK7** FI.Y.5s in 52°28'·05N 4°35'·00E (ILNW 294/19)

Hoek van Holland

Move BY N cardinal pillar Lt buoy **Indusbank N Q** in 52°02'·9N 4°03'·6E to 52°01'·8N 4°03'·6E (ILNW 295/19)

C26 (Ed 4/2017) WGS 84

Alte Weser

Move RW safe water pillar Lt buoy **ST** Iso.8s in 53°56'·26N 7°54'·81E to 53°56'·37N 7°55'·60E (ILNW 190/19)

Approaches to the Jade (*correction amended see 461/19*)

Move RW safe water pillar Lt buoy:

Accumer Ee Iso.8s in 53°46'·79N 7°23'·95E to 53°46'·97N 7°25'·60E

Otzumer Balje Iso.4s in 53°48'·54N 7°40'·35E to 53°48'·10N 7°36'·36E

Harle Iso.8s in 53°49'·18N 7°47'·39E to 53°49'·20N 7°48'·91E (ILNW 196/19)

Brunsbüttel (Plan J)

Delete Y Lt tide gauge sym. FI(5)Y.20s in 53°53'·26N 9°07'·48E (ILNW 293/19)

Ijmuiden (Plan A)

Delete Y con Lt buoy **NK7** FI.Y.5s in 52°28'·05N 4°35'·00E (ILNW 294/19)

C27 (Ed 9/2018) WGS 84

Dalgety Bay (Plan L)

Insert Y mooring buoy in 56°01'·69N 3°19'·63W (ILNW 256/19)

C28 (Ed 9/2017) WGS 84

Galloper Wind Farm

Construction work on the Galloper Wind Farm is now complete.

Delete:

lgd *Under Const'n (2016-2018) (buoyed)* centred on 51°57'·5N 2°01'·2E

BY N cardinal pillar Lt buoy VQ in 52°00'·06N 1°59'·33E

Y special pillar Lt buoy Fl.Y.5s in 51°59'·81N 2°02'·76E (ILNW 166/19)

Orford Haven (Plan F)

Move G con. buoy **Weir** to 52°02'·32N 1°27'·59E

For detailed information about the River Ore entrance yachtsmen are advised to consult the accompanying chartlet (revised 03/19) (ILNW 170/19)

Woodbridge Haven (Plan G)

Move:

R can buoy **Knoll Spit** to 51°58'·48N 1°23'·23E

G con. buoy **Mid Knoll** to 51°58'·60N 1°23'·29E

For detailed information about the River Deben entrance yachtsmen are advised to consult the accompanying chartlet (revised 03/19) (ILNW 171/19)

Greater Gabbard Wind Farm

Delete Lt Fl.Y.5s and assoc. fog signal, Horn(1)10s, at wind turbine in:

51°55'·42N 1°59'·25E

51°58'·65N 1°59'·43E

Delete Lt Fl.Y.5s at wind turbine in 51°56'·48N 1°59'·90E (ILNW 249/19)

C29 (Ed 9/2016) WGS 84

Outer Dowsing NW

Delete YBY W cardinal pillar Lt buoy VQ(9)10s (2 buoys) in 53°37'·75N 0°55'·69E (ILNW 132/19)

Inner Well Bank Rough W

Delete Lt Mo(U)22m15M Horn Mast(106) (R Lt) in 53°53'·15N 1°59'·50E (ILNW 154/19)

Outer Gabbard E

Construction work on the Galloper Wind Farm is now complete. Delete lgd (*under const'n*) (*buoyed*) centred on 51°57'·5N 2°04'·5E (ILNW 166/19)

C30 (Ed 5/2017) WGS 84

Notification of new edition

A new 2019 edition of this chart will shortly be published. In addition to the listed corrections the latest wind farm information is included as is the latest depth survey information. There has been general updating throughout. (ILNW 152/19)

C30 (Ed 4/2019) WGS 84

Noord Hinder Junction SW

Work has begun on the construction of the Mermaid Wind Farm.

Insert restricted area joining:

51°43'·05N 2°47'·76E

51°44'·64N 2°45'·26E

51°44'·11N 2°42'·45E

51°42'·25N 2°41'·40E

51°41'·20N 2°42'·37E

Add associated lgd *Mermaid Wind Farm under const'n (2019)* (*buoyed*). Entry to the construction area is prohibited for unauthorised craft. (ILNW 284/19)

Hoek van Holland

Move BY N cardinal pillar Lt buoy **Indusbank N Q** in 52°02'·90N 4°03'·59E to 52°01'·94N 4°03'·60E (ILNW 295/19)

Bligh Bank NE

Work has begun on the construction of the Seastar Wind Farm between Belwind and Northwind Wind Farms.

Insert restricted area joining:

51°40'·06N 2°52'·72E
51°38'·99N 2°54'·50E
51°35'·98N 2°50'·74E
51°36'·71N 2°48'·61E

Add associated lgd *Seastar Wind Farm under const'n (2019) (buoyed)*. Entry to the construction area is prohibited for unauthorised craft. (ILNW 300/19)

C31 (Ed 11/2014) WGS 84

Notification of new edition

A new 2019 edition of this chart will shortly be published. In addition to the listed corrections the chart specification has been improved to show coloured light flashes. Depths have been updated from the latest available surveys. The firing practice areas and marine reserves have been also updated. There has been general updating throughout. (ILNW 318/19)

C32 (Ed 9/2017) WGS 84

Cap D'Antifer

Insert Y special spar Lt buoy:

H1 FI(5)Y.20s in 49°38'·03N 0°00'·09W

H2 FI(5)Y.20s in 49°51'·89N 0°14'·28E

C3 FI(5)Y.20s in 49°51'·40N 0°14'·21E (ILNW 287/19)

C33A (Ed 8/2016) WGS 84

Jersey S

Delete RY special spher. Lt buoy **Met Stn 62027 Wave Recorder** FI(5)Y.20s in 49°04'·79N 2°13'·14W (ILNW 161/19)

C33B (Ed 8/2018) WGS 84

Jersey S

Delete RY special spher. Lt buoy **Met Stn 62027 Wave Recorder** FI(5)Y.20s in 49°04'·92N 2°13'·07W (ILNW 161/19)

St Helier Harbour (Plan J)

Yachtsmen are advised that the depths in St Helier Harbour are subject to silting. For the latest information contact St Helier Port Control. (ILNW 162/19)

Baie de Saint-Brieuc

Delete Y con. Lt buoy **ODAS** FI(5)Y.20s in 48°53'·32N 2°33'·63W (ILNW 304/19)

C36 (Ed 1/2015) WGS 84

Port de Morgat (Plan F)

Insert drying height -0·1m in 48°13'·63N 4°29'·76W (ILNW 177/19)

Notification of new edition

A new 2019 edition of this chart will shortly be published. In addition to the listed corrections the chart specification has been improved to show coloured light flashes. Depths have been updated from the latest available surveys. There has been general updating throughout. (ILNW 278/19)

C37 (Ed 6/2017) WGS 84

Lesconcil S, Basse Devel

Insert drying Rk sym. plus assoc. drying height -0·9m in 47°46'·54N 4°11'·83W (ILNW 143/19)

Loctudy (Plan F)

Amend Lt at R port Bn Tr **Karek-Saoz** FI.R.2·5s3m1M to FI.R.2·5s2M in 47°50'·02N 4°09'·38W (ILNW 219/19)

Loctudy (Plan F)

Insert W Bn in 47°50'·34N 4°10'·18W (ILNW 220/19)

C38 (Ed 4/2016) WGS 84

Presqu'île de Quiberon, Port Haliguen

Insert Lt desc. Fl(2)WR.6s10m10/7M at Lt in 47°29'·36N 3°05'·94W (ILNW 137/19)

C39 (Ed 8/2017) WGS 84

Presqu'île de Quiberon, Port Haliguen (Main chart & Plan C)

Amend Lt Oc(2)WR.6s10m11/8M to Fl(2)WR.6s10m10/7M in 47°29'·36N 3°05'·94W (ILNW 137/19)

Port Haliguen (Plan C) (Correction amended see ILNW 264/19)

Amend Lt:

Fl.G.2·5s9m6M to Fl(2)G.6s10m6M in 47°29'·34N 3°06'·02W

Fl.R.4s10m5M to Fl.R.12s10m3M in 47°29'·29N 3°05'·97W (ILNW 138/19)

Port Haliguen (Plan C)

Amend Lt Fl.R.12s10m3M to Fl(3)R.12s10m3M in 47°29'·29N 3°05'·97W (ILNW 264/19)

Plateau du Four SW

Amend Lt at floating turbine Fl(3)Y.15s10M (R Lt) to Mo(U)Y.15s (R Lt) in 47°14'·4N 2°46'·5W. AIS remains unchanged. (ILNW 286/19)

C41 (Ed 6/2017) WGS 84

Pertuis de Maumusson NE

Delete BY N cardinal spar buoy in 45°48'·26N 1°12'·70W (ILNW 224/19)

C42 (Ed 9/2017) WGS 84

Automatic Identification Systems (Main chart & Plan I)

Insert racon sym. & assoc. lgd AIS at Lt Fl(3)16s11M (Fl(3)16s37m11M Plan I) in 43°28'·40N 3°45'·35W (ILNW 272/19)

Automatic Identification Systems (Plan I)

Insert racon sym. & assoc. lgd A/S at Lt buoy:

No 1 Fl.G.5s in 43°27'·73N 3°46'·22W

No 2 Fl.R.5s in 43°27'·64N 3°46'·05W (ILNW 273/19)

Abra de Bilbao (Plan F)

Move Y special pillar Lt buoy Fl(5)Y.20s4M in 43°22'·07N 3°03'·92W to 43°22'·01N 3°04'·14W

Delete Y special pillar Lt buoy Fl.Y.3s in 43°20'·87N 3°03'·19W (ILNW 288/19)

C43 (Ed 2/2014) WGS 84

Automatic Identification Systems (Main chart & Plan A)

Insert racon sym. & assoc. lgd AIS at Lt Fl(3)11M (Fl(3)16s37m11M Plan A) in 43°28'·40N 3°45'·35W (ILNW 272/19)

Automatic Identification Systems (Plan A)

Insert racon sym. & assoc. lgd A/S at Lt buoy:

No 1 Fl.G.5s in 43°27'·73N 3°46'·21W

No 2 Fl.R.5s in 43°27'·64N 3°46'·04W (ILNW 273/19)

C50 (Ed 3/2017) WGS 84

Punta del Gato

Insert RW safe water pillar Lt buoy LFI.10s in 37°11'·67N 7°03'·35W (ILNW 277/19)

C52 (Ed 9/2015) WGS 84

Menai Strait (Plan G)

Yachtsmen are advised to navigate with caution as a sandbank has developed between buoys **C11** and **C9** in the Menai Strait. Insert lgd *Less water* centred on 53°10'·5N 4°14'·6W (ILNW 226/19)

C55 (Ed 3/2015) WGS 84

River Shannon, Corlis Pt

Insert racon sym. plus assoc. lgd AIS at Lt Iso.4s10M in 52°37'·10N 9°36'·36W (ILNW 230/19)

C59 (Ed 9/2015) WGS 84

Newport

There have been numerous changes to the **East Usk** Lt in 51°32'·40N 2°58'·01W. The changes are as follows:

Amend Lt desc. FI(2)WRG.10s11m11-10M & Oc.WRG.10s 10m11-9M to Oc.WRG.10s10m11M (by day 2M).

Amend Oc.WRG Lt sectors to 021° - R - 017° - W - 015° - G - 011°

Delete FI(2)WRG Lt desc. and assoc. inner Lt sectors (ILNW 129/19)

Sharpness (Plan L)

Insert fog signal, Siren(1)5s at Lt 2F.R(vert) in 51°43'·07N 2°29'·10W

Delete fog signal, Siren(1)20s at Lt 2F.G(vert) in 51°42'·97N 2°29'·11W (ILNW 269/19)

C61 (Ed 3/2016) WGS 84

Wicklow Head

Amend range of Lt at **LT HO.** to 18M in 52°58'·01N 6°00'·06W (ILNW 163/19)

Blackwater Bank NW, Rusk Channel

Insert racon sym. and assoc. lgd A/S at G con Lt buoy **No1** FI(2)G.5s (sync) in 52°28'·53N 6°11'·78W (ILNW 165/19)

Menai Strait (Plan H)

Yachtsmen are advised to navigate with caution as a sandbank has developed between buoys **C11** and **C9** in the Menai Strait. Insert lgd *Less water* centred on 53°10'·3N 4°15'·0W (ILNW 226/19)

The Swellies (Plan I)

Insert *Obstn* depth 2·8m in 53°14'·07N 4°08'·81W (ILNW 246/19)

Dun Laoghaire (Plan K)

Replace depth 3·5m with depth 2·9m in 53°17'·79N 6°07'·87W (ILNW 301/19)

C62 (Ed 7/2016) WGS 84

Dun Laoghaire (Plan J)

Replace depth 3·5m with depth 2·9m in 53°17'·79N 6°07'·87W (ILNW 301/19)

C65 (Ed 7/2016) WGS 84

Point of Ardnamurchan

Amend range of **LT HO.** FI(2)20s55m22M to 18M in 56°43'·62N 6°13'·56W. AIS remains unchanged. (ILNW 130/19)

Oban (Plan G)

Insert G con Lt buoy FI.G.2s:

No 1 in 56°25'·33N 5°29'·08W

No 3 in 56°25'·28N 5°29'·08W

No 5 in 56°25'·22N 5°29'·09W

No 7 in 56°25'·16N 5°29'·06W

No 9 in 56°25'·10N 5°28'·95W

Insert R can Lt buoy FI.R.2s:

No 2 in 56°25'·35N 5°29'·25W

No 4 in 56°25'·27N 5°29'·25W

Delete YBY W cardinal pillar Lt buoy VQ(9)10s in 56°25'·19N 5°29'·10W (ILNW 262/19)

C66 (Ed 4/2016) WGS 84

Kyleakin (Plan B)

Insert Lt 2F.R(vert) in 57°16'·49N 5°45'·26W and extend pier N and W to join. (ILNW 175/19)

Loch Duich

Insert Lt FI.G.5s2m2M in 57°14'·95N 5°29'·85W (ILNW 248/19)

Benbecula E

Insert dangerous underwater rock sym. in 57°26'·43N 7°12'·25W (ILNW 280/19)

C67 (Ed 11/2017) WGS 84

Stornoway Harbour (Plan D)

Amend Lt Iso.WRG.10s24m5M to DirWRG.10s24m5M in 58°12'·00N 6°23'·54W. There have been changes to the Lt sectors as follows:

277° - Iso.G - 282° - Al.WG - 287° - Iso.W - 290° - Al.WR - 292° - Iso.R - 299°

It has been reported that Lt Iso.WRG.3s8m3M in 58°11'·29N 6°22'·83W has been extinguished. (ILNW 255/19)

Stornoway Harbour (Plan D)

Replace:

R Bn with R Lt Bn FI(2)R.10s2M in 58°11'·67N 6°22'·56W

G Bn with G Lt Bn Q.G.2M in 58°11'·59N 6°23'·04W (ILNW 260/19)

Stornoway Harbour (Plan D)

Delete Lt FI.G.6s8m in 58°12'·14N 6°22'·98W (ILNW 263/19)

Stornoway Harbour (Plan D)

Works are underway to construct a new marina at Newton Basin. Insert label *Works in progress* (2019) centred on 58°12'·22N 6°22'·91W

Insert Y special spher. Lt buoy FI.Y.5s in 58°12'·29N 6°23'·20W (ILNW 290/19)

C68 (Ed 7/2017) WGS 84

Inganess Bay & Eday SW

Insert lit platform sym. 2FI.Y.3s in 58°58'·41N 2°53'·13W

Move lit platform 2FI.Y.3s in 59°08'·67N 2°48'·95W to 59°08'·48N 2°49'·10W plus amend Lt desc. to 2FI.Y.5s (ILNW 324/19)

C70 (Ed 4/2016) WGS 84

Inner Well Bank Rough W

Delete Lt Mast in 53°53'·2N 1°59'·4E (ILNW 154/19)

Greater Gabbard Wind Farm E

Construction of the Galloper Wind Farm adjacent to the Greater Gabbard Wind Farm is now complete. Delete assoc. lgd *under const'n* (buoyed). (ILNW 166/19)

Curlew Oil Field

Production platforms and assoc. structures in the oil field are currently being decommissioned. Yachtsmen are advised to navigate with caution. Insert legend *Oil Field Decommissioning (2019-21)* centred on 56°42'·9N 1°17'·7E (ILNW 254/19)

Valhall Oil Field

Insert lit platform sym. in 56°15'·0N 3°20'·9E (ILNW 276/19)

Noord Hinder Junction SW

Work has begun on the construction of the Mermaid Wind Farm.

Insert restricted area joining:

51°43'·1N 2°47'·8E

51°44'·6N 2°45'·3E

51°44'·1N 2°42'·5E

51°42'·3N 2°41'·4E

51°41'·2N 2°42'·4E

Add associated lgd *Wind Farm under const'n (buoyed)*. Entry to the construction area is prohibited for unauthorised craft. (ILNW 284/19)

Bligh Bank NE

Work has begun on the construction of the Seastar Wind Farm.

Insert restricted area joining:

51°40'·1N 2°52'·7E

51°39'·0N 2°54'·5E

51°36'·0N 2°50'·7E

51°36'·7N 2°48'·6E

Add associated lgd *Wind Farm under const'n (buoyed)*. Entry to the construction area is prohibited for unauthorised craft. (ILNW 300/19)

C80 (Ed 5/2018) WGS 84

Outer Silver Pit SW

Delete Lt in 53°52'·6N 1°59'·5E (ILNW 154/19)

Y2 (Ed 3/2018) WGS 84

Orford Haven

Move G con. buoy **Weir** to 52°02'·32N 1°27'·59E

For detailed information about the River Ore entrance yachtsmen are advised to consult the accompanying chartlet (revised 03/19) (ILNW 170/19)

Y7 (Ed 2/2018) WGS 84

Kentish Flats Wind Farm

Delete Y special spher. Lt buoy Fl(5)Y.20s in 51°28'·11N 1°02'·52E (ILNW 281/19)

Y9 (Ed 3/2018) WGS 84

Holbeach Firing Practice Area (*correction amended see ILNW 467/19*)

Insert:

Y con buoy **DZ No 10** in 52°51'·65N 0°12'·93E

Y special pillar buoy **DZ No 11** in 52°50'·88N 0°12'·63E. Delete Y con Lt buoy **RAF No6** Fl.Y.3s close NW

Amend name of Bn **RAF No1** to **DZ No 1** in 52°53'·75N 0°06'·33E

Replace:

Y Bn **RAF No2** with Y con buoy **DZ No 2** in 52°54'·42N 0°07'·48E

Y Bn **RAF No2A** with Y con buoy **DZ No 3** in 52°54'·75N 0°08'·72E

Y Lt Bn **RAF No3** Fl.Y.5s with Y con buoy **DZ No 4** in 52°55'·00N 0°09'·77E

Y Lt Bn **RAF No4** Fl.Y.10s with Y pillar buoy **DZ No 5** in 52°55'·10N 0°11'·47E

Delete Y Lt Bn **RAF No5** Fl(2)Y.5s in 52°51'·39N 0°13'·00E

(ILNW 176/19)

Holbeach Firing Practice Area

Amend name of Y con buoy:

RAF No1 to **DZ No 6** in 52°54'·37N 0°12'·89E

RAF No2 to **DZ No 7** in 52°53'·74N 0°13'·32E

Amend name of Y con Lt buoy:

RAF No3 to **DZ No 8** in 52°52'·98N 0°13'·29E (ILNW 271/19)

Y16 (Ed 6/2017) WGS 84

Woodbridge Haven

Move:

R can buoy **Knoll Spit** to 51°58'·48N 1°23'·23E

G con. buoy **Mid Knoll** to 51°58'·60N 1°23'·29E

For detailed information about the River Deben entrance yachtsmen are advised to consult the accompanying chartlet (revised 03/19) (ILNW 171/19)

Y17 (Ed 11/2017) WGS 84

Essex Marina (Plan E)

Delete No wash zone and Y special spher. Lt buoy Fl.Y.2·5s in:

51°37'·45N 0°48'·00E

51°37'·47N 0°47'·73E (ILNW 225/19)

Mersea Island S

Insert general marine limit, shellfish beds, joining:

51°46'·15N 0°57'·43E

51°45'·63N 0°57'·43E

51°45'·63N 0°55'·62E

51°46'·15N 0°55'·62E

Add assoc. label *Oyster Beds* (see Note). (ILNW 279/19)

Y18 (Ed 4/2016) WGS 84

Port Werburgh Marina (Plan B)

Add note: Yachtsmen are advised that Port Werburgh does not accept visiting yachts. (ILNW 267/19)

Y23 (Ed 7/2016) WGS 84

Little Channel (Main chart & Plan A)

Replace G starboard Bn with G starboard Lt Bn Fl.G.3s in 50°42'·49N 1°59'·04W. (ILNW 145/19)

Y31 (Ed 4/2018) WGS 84

Needles Channel

Replace depth:

5·9m with depth 3·2m in 50°39'·76N 1°36'·96W and extend 5m contour to enclose.

depth 2·1m with depth 1·1m in 50°40'·46N 1°36'·56W and extend 2m contour to enclose (ILNW 153/19)

Y35 (Ed 4/2018) WGS 84

Gosport

Delete minor R Lt in 50°47'·32N 1°07'·01W (ILNW 291/19)

Y38 (Ed 4/2018) WGS 84

Needles Channel

Insert depth:

3·2m in 50°39'·76N 1°36'·96W and extend 5m contour SE to enclose

1.1m enclosed by 2m contour in 50°40'·46N 1°36'·56W (ILNW 153/19)

Y39 (Ed 1/2019) WGS 84

Poole Harbour East, Little Channel

Replace G starboard Bn with G starboard Lt Bn Fl.G.3s in 50°42'·49N 1°59'·04W. (ILNW 145/19)

Y43 (Ed 4/2019) WGS 84

Approaches to River Dart

Insert depth 2.0m in 50°20'·03N 3°33'·08W. Delete depth 2.4m close NW (ILNW 292/19)

Y45 (Ed 4/2019) WGS 84

Wembury Bay

Insert lgt *Less water reported (2019)* centred on 50°18'·40N 4°06'·00W (ILNW 235/19)

Y49 (Ed 4/2019) WGS 84

Hugh Town (Plan A)

Insert Lt 2F.G(vert) in 49°55'·12N 6°18'·98W (ILNW 257/19)

Y50 (Ed 4/2019) WGS 84

Saint Mary's, Hugh Town

Insert Lt 2F.G(vert) in 49°55'·12N 6°18'·98W (ILNW 257/19)

Y58 (Ed 7/2016) WGS 84

River Fal

Delete tidal diamond sym. W in 50°10'·84N 5°01'·66W (ILNW 172/19)

Turnaware Point

Insert drying height -0.2m in 50°12'·40N 5°02'·12W (ILNW 302/19)

2000+2 (Ed 3/2018) WGS 84

Orford Haven

Move G con. buoy **Weir** to 52°02'·32N 1°27'·59E

For detailed information about the River Ore entrance yachtsmen are advised to consult the accompanying chartlet (revised 03/19) (ILNW 170/19)

2000+3 (Ed 3/2018) WGS 84

Orford Haven

Move G con. buoy **Weir** to 52°02'·32N 1°27'·59E

For detailed information about the River Ore entrance yachtsmen are advised to consult the accompanying chartlet (revised 03/19) (ILNW 170/19)

Woodbridge Haven

Move:

R can buoy **Knoll Spit** to 51°58'·48N 1°23'·23E

G con. buoy **Mid Knoll** to 51°58'·60N 1°23'·29E

For detailed information about the River Deben entrance yachtsmen are advised to consult the accompanying chartlet (revised 03/19) (ILNW 171/19)

2000+6 (Ed 3/2018) WGS 84

Mersea Island S

Insert general marine limit, shellfish beds, joining:

51°46'·15N 0°56'·89E (E border)
51°46'·15N 0°55'·62E
51°45'·63N 0°55'·62E
51°45'·63N 0°56'·89E (E border)
Add assoc. label *Oyster Beds* (see Note). (ILNW 279/19)

2000+7 (Ed 3/2018) WGS 84

Mersea Island S

Insert general marine limit, shellfish beds, joining:

51°46'·15N 0°57'·43E

51°45'·63N 0°57'·43E

51°45'·63N 0°55'·62E

51°46'·15N 0°55'·62E

Add assoc. label *Oyster Beds* (see Note). (ILNW 279/19)

2000+9 (Ed 3/2018) WGS 84

Essex Marina (Plan C)

Delete No wash zone and Y special spher. Lt buoy Fl.Y.2·5s in:

51°37'·45N 0°48'·00E

51°37'·47N 0°47'·73E (ILNW 225/19)

2100+1 (Ed 2/2018) WGS 84

Kentish Flats Wind Farm

Delete Y special spher. Lt buoy Fl(5)Y.20s in 51°28'·11N 1°02'·52E (ILNW 281/19)

2100+3 (Ed 2/2018) WGS 84

Northfleet Hope (Panel B)

Amend Lt OcWRG.10s30m16-12M to Oc.WRG.10s39m7-10M in 51°21'·94N 0°20'·06E (ILNW 251/19)

Gravesend Reach (Panel B)

Replace foul sym. with mooring buoy in 51°26'·80N 0°25'·19E (ILNW 261/19)

2100+4 (Ed 2/2018) WGS 84

Woolwich Reach (Panel B)

Insert YB S cardinal pillar Lt buoy Q(6)+LFl.15s in 51°29'·84N 0°01'·48E (ILNW 231/19)

2100+5 (Ed 2/2018) WGS 84

Port Werburgh Marina (Plan B)

Add note: Yachtsmen are advised that Port Werburgh does not accept visiting yachts. (ILNW 267/19)

2100+7 (Ed 2/2018) WGS 84

Pegwell Bay

Replace depth 5·9m with depth 0·1m in 51°17'·15N 1°25'·02E (ILNW 160/19)

Calais

A new outer breakwater has been constructed at the eastern side of the port of Calais. Insert breakwater joining:

50°58'·5N 1°52'·6E (coast)

50°58'·9N 1°52'·5E

50°59'·0N 1°51'·8E

50°58'·9N 1°51'·3E

50°58'·7N 1°50'·7E

50°58'·6N 1°50'·7E (ILNW 228/19)

2100+10 (Ed 2/2018) WGS 84

Outer Owers

Insert *Wk* depth 1·3m in 50°39'·58N 0°41'·19W (ILNW 236/19)

2100+11 (Ed 2/2018) WGS 84

Ramsgate Channel E (Plan B)

Insert depth 0·1m in 51°17'·15N 1°25'·02E (ILNW 160/19)

Calais (Plan D)

A new outer breakwater has been constructed at the eastern side of the port of Calais. Insert breakwater joining:

50°58'·95N 1°51'·92E (E border)

50°58'·95N 1°51'·82E

50°58'·87N 1°51'·24E

50°58'·67N 1°50'·74E

50°58'·58N 1°50'·66E (ILNW 228/19)

2100+12 (Ed 2/2018) WGS 84

Outer Owers (Plan E)

Insert *Wk* depth 1·3m in 50°39'·58N 0°41'·19W Delete depth 2·2m close NE (ILNW 236/19)

2110+2 (Ed 1/2017) WGS 84

Pegwell Bay

Replace depth 5·9m with depth 0·1m in 51°17'·15N 1°25'·02E (ILNW 160/19)

Calais (Main chart & Plan A)

A new outer breakwater has been constructed at the eastern side of the port of Calais. Insert breakwater joining:

50°58'·5N 1°52'·6E (coast)

50°58'·9N 1°52'·5E

50°59'·0N 1°51'·8E

50°58'·7N 1°50'·7E

50°58'·6N 1°50'·7E (ILNW 228/19)

2110+4 (Ed 1/2017) WGS 84

Calais (Plan D)

A new outer breakwater has been constructed at the eastern side of the port of Calais. Insert breakwater joining:

50°58'·95N 1°51'·92E (E border)

50°58'·95N 1°51'·82E

50°58'·87N 1°51'·24E

50°58'·67N 1°50'·74E

50°58'·58N 1°50'·66E (ILNW 228/19)

2110+5 (Ed 1/2017) WGS 84

Le Havre-Antifer SW, Fécamp NW & St-Pierre-en-Port N

Insert Y special spar Lt buoy:

C1 FI(5)Y.20s in 49°56'·64N 0°17'·05E

C2 FI(5)Y.20s in 49°55'·66N 0°30'·04E

C3 FI(5)Y.20s in 49°51'·40N 0°14'·21E

H1 FI(5)Y.20s in 49°38'·03N 0°00'·09W

H2 FI(5)Y.20s in 49°51'·89N 0°14'·28E (ILNW 287/19)

2110+9 (Ed 1/2017) WGS 84

Cap D'Antifer SW

Insert Y special spar Lt buoy **H1** Fl(5)Y.20s in 49°38'·03N 0°00'·09W (ILNW 287/19)

2120 (Ed 2/2019) WGS 84

Maasgeul (2120.8)

Insert BY N cardinal pillar Lt buoy **NET-N** Q in 51°59'·41N 4°01'·31E (ILNW 283/19)

Maasgeul (2120.7)

Insert BY N cardinal pillar Lt buoy **NET-N** Q in 51°59'·41N 4°01'·31E (ILNW 283/19)

Noord Hinder Junction SW (2120.1)

Work has begun on the construction of the Mermaid Wind Farm.

Insert restricted area joining:

51°43'·1N 2°47'·8E

51°44'·6N 2°45'·3E

51°44'·1N 2°42'·5E

51°42'·3N 2°41'·4E

51°41'·2N 2°42'·4E

Add associated lgd *Mermaid Wind Farm under const'n (2019) (buoyed)*. Entry to the construction area is prohibited for unauthorised craft. (ILNW 284/19)

Noord Hinder Junction SW (2120.11)

Work has begun on the construction of the Mermaid Wind Farm.

Insert restricted area joining:

51°43'·1N 2°47'·8E

51°44'·6N 2°45'·3E

51°44'·1N 2°42'·5E

51°42'·3N 2°41'·4E

51°41'·2N 2°42'·4E

Add associated lgd *Mermaid Wind Farm under const'n (2019) (buoyed)*. Entry to the construction area is prohibited for unauthorised craft. (ILNW 284/19)

Ijmuiden (2120.8 Plan B)

Delete Y con Lt buoy Fl.Y.5s in 52°28'·05N 4°35'·00E (ILNW 294/19)

Hoek van Holland (2120.1)

Move BY N cardinal pillar Lt buoy **Indusbank-N** Q to 52°01'·8N 4°03'·6E (ILNW 295/19)

Hoek van Holland (2120.2)

Move BY N cardinal pillar Lt buoy **Indusbank-N** Q to 52°01'·8N 4°03'·6E (ILNW 295/19)

Hoek van Holland (2120.7)

Insert BY N cardinal pillar Lt buoy **Indusbank-N** Q in 52°01'·82N 4°03'·60E (ILNW 295/19)

Hoek van Holland (2120.8)

Move BY N cardinal pillar Lt buoy **Indusbank-N** Q to 52°01'·82N 4°03'·60E (ILNW 295/19)

Bligh Bank NE (2120.1)

Work has begun on the construction of the Seastar Wind Farm between Belwind and Northwind Wind Farms.

Insert restricted area joining:

51°40'·1N 2°52'·7E

51°39'·0N 2°54'·5E

51°36'·0N 2°50'·7E

51°36'·7N 2°48'·6E

Add associated lgd *Seastar Wind Farm under const'n (2019) (buoyed)*. Entry to the construction area is prohibited for unauthorised craft. (ILNW 300/19)

Bligh Bank NE (2120.11)

Work has begun on the construction of the Seastar Wind Farm.

Insert restricted area joining:

51°40'·1N 2°52'·7E

51°39'·0N 2°54'·5E

51°36'·0N 2°50'·7E

51°36'·7N 2°48'·6E

Add associated lgd *Seastar Wind Farm under const'n (2019) (buoyed)*. Entry to the construction area is prohibited for unauthorised craft. (ILNW 300/19)

Cadzand-Bad W (2120.4)

Insert Y special con Lt buoy **HD 17** Fl.Y.5s in 51°22'·34N 3°21'·45E (ILNW 308/19)

Cadzand-Bad W (2120.5)

Insert Y special con Lt buoy **HD 17** Fl.Y.5s in 51°22'·34N 3°21'·45E (ILNW 308/19)

2130 (Ed 3/2019) WGS 84

Schaar van Valkenisse (2130.6)

Amend Lt desc at buoy:

SvV-C VQ to Fl(3)Y.10s in 51°22'·35N 4°06'·25E

SvV-Z VQ to Fl.Y.5s in 51°22'·35N 4°05'·87E (ILNW 183/19)

Schaar van de Noord (2130.6)

Amend Lt desc at buoy:

SN4 VQ.Y to Fl(3)Y.10s in 51°23'·50N 4°11'·85E

SN5 Q.Y to Fl.Y.5s in 51°23'·26N 4°11'·90E (ILNW 184/19)

Schaar van de Noord (2130.7 Panel 1)

Amend Lt desc at buoy:

SN4 VQ.Y to Fl(3)Y.10s in 51°23'·50N 4°11'·85E

SN5 Q.Y to Fl.Y.5s in 51°23'·26N 4°11'·90E (ILNW 184/19)

Sint Maartensdijk S (2130.17)

Rename R spar buoy **O34** to **O36** plus add cylinder topmark in 51°31'·40N 4°05'·85E

Insert R spar buoy **O34** in in 51°31'·45N 4°04'·71E (ILNW 185/19)

Schelde-Rijnverbinding (2130.19A)

Replace Lt star with G spar Lt buoy:

75 Iso.G.4s to **SRK 75** Iso.G.4s in 51°33'·91N 4°13'·67E

85 Iso.G.4s to **SRK 85** Iso.G.5s in 51°35'·62N 4°11'·62E (ILNW 186/19)

Sint Annaland (2130.18 Plan B)

Insert Y spher. buoy:

51°36'·52N 4°06'·42E

51°36'·49N 4°06'·48E

51°36'·46N 4°06'·53E

51°36'·43N 4°06'·59E

51°36'·41N 4°06'·64E

51°36'·38N 4°06'·69E (ILNW 317/19)

2140 (Ed 4/2019) WGS 84

Maasgeul (2140.2)

Insert BY N cardinal pillar Lt buoy **NET-N** Q in 51°59'·41N 4°01'·31E (ILNW 283/19)

Maasgeul (2140.4)

Insert:

BY N cardinal pillar Lt buoy **NET-N** Q in 51°59'·41N 4°01'·31E

YBY W cardinal pillar Lt buoy **NET-W** Q(9)15s in 51°59'·33N 4°01'·24E

BYB E cardinal pillar Lt buoy **NET-E** Q(3)10s in 51°59'·29N 4°01'·65E (ILNW 283/19)

Hoek van Holland (2140.2)

Move BY N cardinal pillar Lt buoy **Indusbank-N** Q to 52°01'·82N 4°03'·60E (ILNW 295/19)

2150 (Ed 2/2019) WGS 84

Eierlandsche Gronden (2150.1)

Insert drying height -0·1m in 53°13'·55N 4°50'·01E (ILNW 133/19)

Eierlandsche Gronden (2150.4)

Insert drying height -0·1m in 53°13'·55N 4°50'·01E (ILNW 133/19)

Eierlandsche Gronden (2150.5)

Insert drying height -0·1m in 53°13'·55N 4°50'·01E (ILNW 133/19)

Harlingen (2150.8)

Delete Lt Iso.G.4s in 53°11'·05N 5°25'·56E (ILNW 134/19)

Texel W (2150.1)

Insert:

circular dangerline and legend *Obstn* in 53°06'·77N 4°41'·54E

BYB E card pillar Lt buoy **MG-EAST** VQ(3)5s in 53°06'·77N 4°41'·88E (ILNW 135/19)

Osterems (2150.16) (*correction amended see ILNW 197/19*)

Move R spar buoy:

O 26 in 53°33'·88N 6°56'·09E to 53°33'·60N 6°56'·07E

O 28 in 53°32'·82N 6°56'·71E to 53°32'·93N 6°56'·48E (ILNW 136/19)

Harlingen (2150.8)

Delete Lt Iso.R.8s in 53°11'·55N 5°25'·98E (ILNW 167/19)

Approaches to West-Terschelling (2150.6)

Insert label *Depths and Buoyage* (see Note) in:

53°19'·30N 5°08'·90E

53°20'·70N 5°12'·80E (ILNW 174/19)

Molengat (2150.10)

Move:

RGR preferred channel spar buoy **WA 24-MG 1** to 53°24'·46N 5°39'·92E

G starboard spar buoy **MG 1A** to 53°24'·32N 5°40'·83E

R port spar buoy **MG 2** to 53°24'·45N 5°40'·83E (ILNW 187/19)

Molengat (2150.11)

Move:

RGR preferred channel spar buoy **WA 24-MG 1** to 53°24'·46N 5°39'·92E

G starboard spar buoy **MG 1A** to 53°24'·32N 5°40'·83E

R port spar buoy **MG 2** to 53°24'·45N 5°40'·83E (ILNW 187/19)

Osterems (2150.16)

Move G con buoy **O25** to 53°33'·77N 6°55'·83E

Replace depth 3·5m with drying height -0·6m in 53°30'·54N 6°57'·31E and extend 2m contour E (ILNW 188/19)

Wangerooger Fahrwasser (2150.20)

Amend Lt desc at R pillar Lt buoy **14** Q.R to Oc(3)R.12s in 53°48'·88N 7°57'·31E

Insert R cylinder topmark at R pillar Lt buoy **24/M 14** Oc(3)R.12s in 53°45'·26N 8°03'·33E

Delete R cylinder topmark at R pillar Lt buoy **22** Fl.R.4s in 53°46'·18N 8°02'·87E (ILNW 189/19)

Alte Weser (2150.20)

The Alte Weser buoyed channel has moved NE.

Move:

RW safe water pillar Lt buoy **ST** Iso.8s in 53°56'·26N 7°54'·81E to 53°56'·37N 7°55'·60E

G starboard pillar Lt buoy **A1** in 53°54'·59N 7°58'·12E to 53°54'·86N 7°58'·38E

R port pillar Lt buoy **A2** in 53°55'·31N 7°58'·82E to 53°55'·51N 7°59'·08E

Amend sectors at **Alte Weser** Lt in 53°51'·79N 8°07'·65E to 074°-G-121°-W-126°-R-140°. Lt desc and remaining Lt sectors remain unchanged. (ILNW 190/19)

Harle (2150.20)

Move RW safe water pillar Lt buoy **Harle** Iso.8s in 53°49'·18N 7°47'·39E to 53°49'·20N 7°48'·91E (ILNW 191/19)

Neufelder sand (2150.22 Panel 2)

Delete R spar buoy:

Neufeld 2 in 53°52'·15N 9°00'·20E

Neufeld 4 in 53°52'·55N 9°00'·75E (ILNW 192/19)

Neufelder sand (2150.22 Panel 2)

Insert YRY special spher Lt buoy Fl.Y.4s in 53°53'·08N 9°04'·81E

Replace Y special spher Lt buoy Fl.Y.4s with YRY special spher Lt buoy Fl.Y.4s in:

53°52'·78N 9°03'·83E

53°52'·46N 9°02'·76E

53°52'·08N 9°01'·31E

53°51'·79N 8°59'·71E

Insert limit of restricted area, entry prohibited, joining:

53°53'·34N 9°04'·81E

53°53'·08N 9°04'·81E (buoy)

53°52'·78N 9°03'·83E (buoy)

53°52'·46N 9°02'·76E (buoy)

53°52'·08N 9°01'·31E (buoy)

53°51'·79N 8°59'·71E (buoy)

53°52'·00N 8°58'·71E

and extending along the 0m contour to enclose.

Delete limit of anchoring area between 53°52'·78N 9°03'·83E and 53°53'·33N 9° 03'·83E (ILNW 193/19)

Accumer Ee (2150.20) (correction amended see ILNW 460/19)

Move:

RW safe water pillar Lt buoy **Accumer Ee** Iso.8s in 53°46'·90N 7°24'·75E to 53°46'·97N 7°25'·60E

R spar buoy **A2** in 53°46'·29N 7°25'·37E to 53°46'·51N 7°25'·71E (ILNW 194/19)

Otzumer Balje (2150.20) (correction amended see ILNW 461/19)

Move:

RW safe water pillar Lt buoy **Otzumer Balje** Iso.4s to 53°48'·10N 7°36'·36E

G con buoy **OB 1** to 53°47'·71N 7°36'·38E

R spar buoy **OB 2** to 53°47'·75N 7°36'·61E (ILNW 195/19)

Osterems (2150.16)

Move:

R spar buoy:

O 26 to 53°33'·78N 6°55'·96E

O 28 to 53°33'·01N 6°56'·35E

O 36 to 53°30'·22N 6°57'·36E

G con buoy **O 27** to 53°32'·98N 6°56'·22E

R port spar buoy **O 30/L 2** to 53°32'·45N 6°57'·56E (ILNW 197/19)

Navigation in National Parks (2150.16)

Amend note **NAVIGATION IN NATIONAL PARKS** to:

NAVIGATION IN NATIONAL PARKS

Landing is not permitted in Zone I areas throughout the year and passage is only permitted via approved routes.

Seal reserves and bird reserves are closed during the dates given. If no dates are stated, then entry is prohibited all year round. Channels are excepted. (ILNW 234/19)

Navigation in National Parks (2150.17)

Amend note **NAVIGATION IN NATIONAL PARKS** to:

NAVIGATION IN NATIONAL PARKS

Landing is not permitted in Zone I areas throughout the year and passage is only permitted via approved routes.

Seal reserves and bird reserves are closed during the dates given. If no dates are stated, then entry is prohibited all year round. Channels are excepted. (ILNW 234/19)

Navigation in National Parks (2150.21 Plans A & B)

Amend note **NAVIGATION IN NATIONAL PARKS** to:

NAVIGATION IN NATIONAL PARKS

Landing is not permitted in Zone I areas throughout the year and passage is only permitted via approved routes.

Seal reserves and bird reserves are closed during the dates given. If no dates are stated, then entry is prohibited all year round. Channels are excepted. (ILNW 234/19)

Navigation in National Parks (2150.22)

Amend note **NAVIGATION IN NATIONAL PARKS** to:

NAVIGATION IN NATIONAL PARKS

Landing is not permitted in Zone I areas throughout the year and passage is only permitted via approved routes.

Seal reserves and bird reserves are closed during the dates given. If no dates are stated, then entry is prohibited all year round. Channels are excepted. (ILNW 234/19)

Cuxhaven E (2150.22 Panel 2)

Move Y special spher Lt buoy FI.Y.4s in 53°52'·28N 8°44'·15E to 53°52'·33N 8°43'·98E. This marks the new extent of the anchorage area. (ILNW 258/19)

Glameyer (2150.22 Panel 2)

Insert BY N cardinal pillar Lt buoy V.Q in 53°50'·16N 8°50'·05E (ILNW 259/19)

Horsbornplaat NW (2150.16)

Insert:

BY N cardinal spar Lt buoy **CABLE NORTH Q** in 53°34'·13N 6°34'·91E

YB S cardinal spar Lt buoy **CABLE SOUTH VQ(6)+LFI.10s** in 53°34'·02N 6°34'·84E (ILNW 282/19)

Brunsbüttel (2150.21 Plan E)

Delete Y Lt Tide Gauge FI(5)Y.20s in 53°53'·26N 9°07'·48E (ILNW 293/19)

Blauwe Slenk (2150.7)

Replace:

G spar buoy **BS 3A** with G con Lt buoy **BS 3A** Iso.G.8s in 53°14'·51N 5°10'·28E

R spar buoy **BS 4A** with R can Lt buoy **BS 4A** Iso.R.8s in 53°14'·60N 5°10'·58E (ILNW 296/19)

Mittelrinne (2150.20)

Insert G con buoy **M7** in 53°46'·40N 8°06'·30E

Move R spar buoy:

M12 to 53°46'·28N 8°06'·43E

M8 to 53°47'·41N 8°06'·56E (ILNW 303/19)

Kromme Balg (2150.10)

Insert depth 1·5m in 53°23'·32N 5°38'·47E (ILNW 309/19)

Kromme Balg (2150.11)

Insert depth 1.5m in 53°23'·32N 5°38'·47E (ILNW 309/19)

Kromme Balg (2150.10)

Move G spar buoy:

KB 5 to 53°22'·32N 5°37'·41E

KB 7 to 53°22'·47N 5°37'·57E plus add cone topmark

KB 9 to 53°22'·59N 5°37'·69E (ILNW 310/19)

Kromme Balg (2150.11)

Move G spar buoy:

KB 5 to 53°22'·32N 5°37'·41E

KB 7 to 53°22'·47N 5°37'·57E plus add cone topmark

KB 9 to 53°22'·59N 5°37'·69E (ILNW 310/19)

Holwerderbalg (2150.11)

Move G spar buoy **3a** to 53°26'·45N 5°57'·56E (ILNW 311/19)

Holwerderbalg (2150.13)

Move G spar buoy:

3a to 53°26'·45N 5°57'·56E

17 to 53°26'·80N 6°00'·23E (ILNW 311/19)

Nes (2150.11 Plan A)

Amend depth:

0.2m to 1.2m in 53°26'·20N 5°46'·59E

1.3m to 1.8m in 53°26'·07N 5°46'·55E

Delete YBY W cardinal Bn in 53°26'·16N 5°46'·61E (ILNW 312/19)

Westgat (2150.13)

Insert:

G spar Lt buoy **WG 9** Iso.G.8s in 53°30'·25N 6°04'·85E

G spar Lt buoy **WG 9A** Fl.G.5s in 53°29'·89N 6°04'·87E

R spar buoy **WG 10A** in 53°29'·90N 6°05'·20E

G spar buoy **WG 11A** in 53°29'·05N 6°04'·57E

R spar buoy **WG 12A** in 53°28'·99N 6°04'·85E

Move:

G con Lt buoy **WG13** Iso.G.8s to 53°28'·56N 6°04'·21E

R can Lt buoy **WG 14** Iso.R.8s to 53°28'·53N 6°04'·45E

Delete G spar buoy:

WG 9 in 53°30'·51N 6°04'·48E

WG 9A in 53°30'·04N 6°04'·80E (ILNW 313/19)

Brakzand (2150.13)

Move G spar buoy **O 13** to 53°26'·08N 6°15'·64E (ILNW 314/19)

Brakzand (2150.15)

Move G spar buoy **13** to 53°26'·08N 6°15'·64E (ILNW 314/19)

Rottumerplaat & Boschplaat W (2150.15)

Move:

R spar buoy **16** to 53°31'·39N 6°26'·10E

G spar buoy **B 3** to 53°31'·06N 6°28'·06E

G starboard spar buoy **ZOL 1** to 53°30'·73N 6°28'·05E (ILNW 315/19)

Gronden van de Lauwers (2150.12)

Insert G spar buoy **L 11A** in 53°32'·85N 6°26'·13E

Move:

R spar buoy **L 4** to 53°32'·90N 6°23'·17E

G spar buoy **L 7** to 53°32'·72N 6°23'·17E (ILNW 316/19)

Gronden van de Lauwers (2150.15)

Insert G spar buoy **L 11A** in 53°32'·85N 6°26'·13E

Move:

R can buoy **L 4** to 53°32'·90N 6°23'·17E plus amend buoy shape to spar

G con buoy **L 7** to 53°32'·72N 6°23'·17E plus amend buoy shape to spar (ILNW 316/19)

2160 (Ed 3/2019) WGS 84

Richel (2160.2)

Delete Y can Lt buoy:

Fl.Y.5s in 52°43'·21N 5°25'·36E

Fl(3)Y.10s in 52°42'·93N 5°25'·84E

Fl.Y.5s in 52°42'·65N 5°26'·32E

Delete Y con Lt buoy:

Fl(3)Y.10s in 52°42'·81N 5°26'·57E

Fl.Y.5s in 52°43'·09N 5°26'·08E

Fl(3)Y.10s in 52°43'·36N 5°25'·60E

Delete restricted area linework, entry prohibited, joining the above buoys. (ILNW 198/19)

Richel (2160.3)

Delete Y can Lt buoy:

Fl.Y.5s in 52°43'·21N 5°25'·36E

Fl(3)Y.10s in 52°42'·93N 5°25'·84E

Fl.Y.5s in 52°42'·65N 5°26'·32E

Delete Y con Lt buoy:

Fl(3)Y.10s in 52°42'·81N 5°26'·57E

Fl.Y.5s in 52°43'·09N 5°26'·08E

Fl(3)Y.10s in 52°43'·36N 5°25'·60E

Delete restricted area linework, entry prohibited, joining the above buoys. (ILNW 198/19)

Richel (2160.5)

Delete Y can Lt buoy:

Fl.Y.5s in 52°43'·21N 5°25'·36E

Fl(3)Y.10s in 52°42'·93N 5°25'·84E

Fl.Y.5s in 52°42'·65N 5°26'·32E

Delete Y con Lt buoy:

Fl(3)Y.10s in 52°42'·81N 5°26'·57E

Fl.Y.5s in 52°43'·09N 5°26'·08E

Fl(3)Y.10s in 52°43'·36N 5°25'·60E

Delete restricted area linework, entry prohibited, joining the above buoys. (ILNW 198/19)

Houtrib (2160.3) (Correction amended see ILNW 385/19)

Move Lt buoy:

EZ1 LFI.G.10s to 52°39'·31N 5°32'·54E plus amend to G spar shape

EZ3 LFI.G.8s to 52°38'·07N 5°32'·14E

EZ5 LFI.G.4s to 52°36'·84N 5°31'·77E

Insert:

G starboard spar Lt buoy **EZ7** LFI.G.8s in 52°35'·52N 5°31'·43E

G spar Lt buoy **EZ9** LFI.G.4s in 52°34'·97N 5°30'·58E (ILNW 199/19)

IJsselooog (2160.13 Panel 1)

Insert:

BY N cardinal pillar Lt buoy **IJO-N1** VQ in 52°36'·32N 5°44'·32E

BY N cardinal spar buoy **IJO-N2** in 52°36'·34N 5°43'·96E

YB S cardinal spar buoy **IJO-Z** in 52°35'·78N 5°43'·78E

Replace:

Y con Lt buoy **IJO-D** Fl.Y.5s with YBY W cardinal spar Lt buoy **IJO-W1** VQ(9)10s in 52°36'·36N 5°43'·59E

Y can buoy **IJO-F** with YBY W cardinal spar buoy **IJO-W2** in 52°36'·09N 5°43'·58E

Y con Lt buoy **IJO-G** Fl.Y.5s with YBY W cardinal spar Lt buoy **IJO-W3** VQ(9)15s in 52°35'·82N 5°43'·57E
Delete 7 x Y buoys **IJO-A** to **IJO-I** between 52°36'·31N 5°44'·45E and 52°35'·73N 5°44'·00E (ILNW 200/19)

Flevo Kusthaven (2160.6 Panel 2)

Add Lt description:

Iso.G.8s at G starboard con buoy **FK 9** in 52°33'·90N 5°30'·73E

Iso.R.8s at R port spar buoy **FK 10** in 52°33'·96N 5°30'·67E (ILNW 201/19)

IJmuiden (2160.7 Plan A)

Delete Y con Lt buoy **NK 7** Fl.Y.5s in 52°28'·05N 4°35'·00E (ILNW 294/19)

2200+2 (Ed 4/2018) WGS 84

Needles Channel

Replace depth:

5·9m with depth 3·2m in 50°39'·76N 1°36'·96W and extend 5m contour to enclose.

depth 2·1m with depth 1·1m in 50°40'·46N 1°36'·56W and extend 2m contour to enclose (ILNW 153/19)

2200+5 (Ed 4/2018) WGS 84

Gosport

Delete minor R Lt in 50°47'·32N 1°07'·01W (ILNW 291/19)

2200+8 (Ed 4/2018) WGS 84

Needles Channel

Insert depth:

3·2m in 50°39'·76N 1°36'·96W and extend 5m contour SE to enclose

1·1m enclosed by 2m contour in 50°40'·46N 1°36'·56W (ILNW 153/19)

2300+2 (Ed 1/2019) WGS 84

Needles Channel

Insert depth:

3·2m in 50°39'·76N 1°36'·96W and extend 5m contour SE to enclose

1·1m enclosed by 2m contour in 50°40'·46N 1°36'·56W (ILNW 153/19)

2300+4 (Ed 1/2019) WGS 84

Portland Harbour (Plan E)

Insert Y special can buoy in 50°35'·11N 2°27'·75W (ILNW 131/19)

Portland Harbour (Plan E)

The marine farm along the Northern Arm of Portland Inner Harbour has been extended NW.

Insert new limit of marine farm, pecked line joining:

50°35'·76N 2°26'·42W (existing limit)

50°35'·83N 2°26'·65W

50°35'·93N 2°26'·58W

50°35'·86N 2°26'·35W (existing limit)

Insert Y spher. Lt buoy Fl.Y.5s in:

50°35'·81N 2°26'·57W

50°35'·83N 2°26'·65W

Insert Y spher. buoy in:

50°35'·93N 2°26'·58W

50°35'·91N 2°26'·50W (ILNW 216/19)

2300+7 (Ed 1/2019) WGS 84

Poole Harbour East, Little Channel

Replace G starboard Bn with G starboard Lt Bn Fl.G.3s in 50°42'·49N 1°59'·04W. (ILNW 145/19)

2300+11 (Ed 1/2019) WGS 84

Approaches to River Dart

Insert depth 2·0m in 50°20'·03N 3°33'·08W. Delete depth 2·4m close NW (ILNW 292/19)

2400+3 (Ed 4/2019) WGS 84

Hugh Town (Plan A)

Insert Lt 2F.G(ver) in 49°55'·12N 6°18'·98W (ILNW 257/19)

2400+6 (Ed 4/2019) WGS 84

Great Mew Stone E

Insert lgd *Less water reported (2019)* centred on 50°18'·43N 4°06'·19W (ILNW 235/19)

2400+13 (Ed 4/2019) WGS 84

Wembury Bay

Insert lgd *Less water reported (2019)* centred on 50°18'·40N 4°06'·00W (ILNW 235/19)

2400+15 (Ed 4/2019) WGS 84

Saint Mary's, Hugh Town

Insert Lt 2F.G(ver) in 49°55'·12N 6°18'·98W (ILNW 257/19)

2400+16 (Ed 4/2019) WGS 84

Approaches to River Dart

Insert depth 2·0m in 50°20'·03N 3°33'·08W. Delete depth 2·4m close NW (ILNW 292/19)

2500+8 (Ed 3/2017) WGS 84

Jersey S

Delete RY special spher. Lt buoy *Wave Recorder* Fl(5)Y.20s in 49°04'·92N 2°13'·07W (ILNW 161/19)

2500+10 (Ed 3/2017) WGS 84

St Helier Harbour (Plan A)

Yachtsmen are advised that the depths in St Helier Harbour are subject to silting. For the latest information contact St Helier Port Control. (ILNW 162/19)

2500+12 (Ed 3/2017) WGS 84

Jersey S

Delete RY special spher. Lt buoy *Wave Recorder* Fl(5)Y.20s in 49°04'·92N 2°13'·07W (ILNW 161/19)

2600+7 (Ed 12/2016) WGS 84

Newport

There have been numerous changes to the **East Usk** Lt in 51°32'·40N 2°58'·01W. The changes are as follows:

Amend Lt desc. Fl(2)WRG.10s11m11-10M & Oc.WRG.10s 10m11-9M to Oc.WRG.10s10m11M (by day 2M).

Amend Oc.WRG Lt sectors to 021° - R - 017° - W - 015° - G - 011°

Delete Fl(2)WRG Lt desc. and assoc. inner Lt sectors (ILNW 129/19)

2600+8 (Ed 12/2016) WGS 84

Sharpness (Plan A)

Insert fog signal, Siren(1)5s at Lt 2F.R(vert) in 51°43'·07N 2°29'·11W

Delete fog signal, Siren(1)20s at Lt 2F.G(vert) in 51°42'·97N 2°29'·12W (ILNW 269/19)

2700+2 (Ed 5/2016) WGS 84

Queen's Channel

Move R can Lt buoy **Q2** VQ.R in 53°31'·40N 3°14'·57W to 53°31'·48N 3°14'·95W (ILNW 164/19)

2700+4 (Ed 5/2016) WGS 84

Menai Strait

Yachtsmen are advised to navigate with caution as a sandbank has developed between buoys **C11** and **C9** in the Menai Strait. Insert lgd *Less water* centred on 53°10'·3N 4°15'·0W (ILNW 226/19)

Bangor (Plan A)

Insert *Obstn* depth 2·8m in 53°14'·07N 4°08'·81W (ILNW 246/19)

2700+11 (Ed 5/2016) WGS 84

Wicklow SE

Amend range of Lt Fl(3)15s37m23M to 18M in 52°57'·93N 5°59'·92W (ILNW 163/19)

Blackwater Bank NW, Rusk Channel

Insert racon sym. and assoc. lgd *A/S* at G con Lt buoy **No1** Fl(2)G.5s (sync) in 52°28'·53N 6°11'·78W (ILNW 165/19)

2800+1 (Ed 11/2012) WGS 84

Point of Ardnamurchan

Amend range of **LT HO**. Fl(2)20s55m22M to 18M in 56°43'·62N 6°13'·56W. AIS remains unchanged. (ILNW 130/19)

2800+3 (Ed 11/2012) WGS 84

Oban (Plan A)

Insert G con Lt buoy Fl.G.2s:

No 1 in 56°25'·33N 5°29'·08W

No 3 in 56°25'·28N 5°29'·08W

No 5 in 56°25'·22N 5°29'·09W

No 7 in 56°25'·16N 5°29'·06W

No 9 in 56°25'·10N 5°28'·95W

Insert R can Lt buoy Fl.R.2s:

No 2 in 56°25'·35N 5°29'·25W

No 4 in 56°25'·27N 5°29'·25W

Delete YBY W cardinal pillar Lt buoy **Corran Ledge** VQ(9)10s in 56°25'·19N 5°29'·11W (ILNW 262/19)

2800+4 (Ed 11/2012) WGS 84

Oban (Plan B)

Insert G con Lt buoy Fl.G.2s:

No 1 in 56°25'·33N 5°29'·08W

No 3 in 56°25'·28N 5°29'·08W

No 5 in 56°25'·22N 5°29'·09W

No 7 in 56°25'·16N 5°29'·06W

No 9 in 56°25'·10N 5°28'·95W

Insert R can Lt buoy Fl.R.2s:

No 2 in 56°25'·35N 5°29'·25W

No 4 in 56°25'·27N 5°29'·25W

Delete YBY W cardinal pillar Lt buoy **Corran Ledge** VQ(9)10s in 56°25'·19N 5°29'·11W (ILNW 262/19)

2800+10 (Ed 11/2012) WGS 84

Point of Ardnamurchan

Amend range of **LT HO**. FI(2)20s55m22M to 18M in 56°43'·62N 6°13'·56W. AIS remains unchanged. (ILNW 130/19)

3200 (Ed 10/2018) WGS 84

Seagrass (Posidonia) (3200.1 & 3200.7)

The seabed in these waters is partially covered by seagrass (Posidonia). Extreme caution should be used when anchoring to avoid damaging the ecosystem. Port authorities should be consulted about the most suitable anchorage areas. (ILNW 203/19)

Ibiza-Tagomago Marine Reserve (3200.1)

Insert limit of marine reserve, restricted area, joining:

38°59'·6N 1°33'·7E (Ibiza coast)

38°58'·0N 1°35'·5E

39°01'·0N 1°38'·9E

39°01'·9N 1°39'·1E (Isla de Tagomago SE)

and

39°02'·4N 1°38'·6E (Isla de Tagomago N)

39°05'·3N 1°36'·2E (Ibiza coast)

Add assoc. label *Marine Reserve* (see Note). (ILNW 204/19)

Ibiza-Tagomago Marine Reserve (3200.4)

Insert limit of marine reserve, restricted area, joining:

38°59'·58N 1°33'·66E (Cala Pada)

38°58'·02N 1°35'·52E

39°01'·03N 1°38'·94E

39°01'·83N 1°39'·08E

39°01'·92N 1°39'·00E (Cabo Xaloc)

and

39°02'·41N 1°38'·59E (Cala Tramontana)

39°05'·27N 1°36'·15E (Punta de Cala Jonc)

Add assoc. label *Marine Reserve*

Insert limit of integral reserve area, no anchoring, joining:

39°03'·58N 1°37'·60E

39°02'·94N 1°36'·54E

39°02'·40N 1°37'·02E

39°03'·05N 1°38'·05E

Add assoc. label *Integral Reserve*

All activities within the marine reserves are affected by numerous restrictions and prohibitions. In the Integral Reserve all activities are prohibited. (ILNW 204/19)

Mahón, Cala Sant Antoni (3200.24 Plan A)

Insert BRB isolated danger Lt Bn FI(2)5s in 39°53'·46N 4°16'·98E (ILNW 208/19)

Isla del Aire (3200.24)

Insert limit of marine reserve joining:

39°48'·84N 4°14'·92E (coast)

39°48'·38N 4°14'·92E

39°47'·83N 4°16'·99E

39°47'·88N 4°17'·74E

39°49'·39N 4°18'·37E

39°49'·91N 4°18'·23E (Punta Rifalet)

Yachtsmen are advised that all activities within the marine reserves are affected by numerous restrictions and prohibitions. (ILNW 210/19)

Puerto de Alcudia (3200.14 Plan A)

Amend range of Lt:

Fl(2+1)R.14.5s4m3M to 1M in 39°50'·07N 3°08'·34E

Fl(2)R.7s3M to 1M in 39°50'·09N 3°08'·17E (ILNW 214/19)

M3 (Ed 5/2018) WGS 84

Ibiza-Tagomago Marine Reserve

Insert limit of marine reserve, restricted area, joining:

38°59'·6N 1°33'·7E (Ibiza coast)

38°58'·0N 1°35'·5E

39°01'·0N 1°38'·9E

39°01'·9N 1°39'·1E (Isla de Tagomago SE)

and

39°02'·5N 1°38'·6E (Isla de Tagomago N)

39°05'·3N 1°36'·2E (Ibiza coast)

Add assoc. label *Marine Reserve* (see Note). (ILNW 204/19)

Mahón, Cala San Antonio (Plan E)

Insert BRB isolated danger Lt Bn Fl(2)5s in 39°53'·46N 4°16'·98E (ILNW 208/19)

Menorca, Isla del Aire

Insert limit of marine reserve joining:

39°48'·8N 4°14'·9E (coast)

39°48'·4N 4°14'·9E

39°47'·8N 4°17'·0E

39°47'·9N 4°17'·7E

39°49'·4N 4°18'·4E

39°49'·9N 4°18'·2E (Punta Rifalet)

Add assoc. label *Marine Reserve* (see Note). (ILNW 289/19)

M6 (Ed 11/2016) WGS 84

Sardegna Marine Reserves

A marine protection zone has been established around the N coast of Sardegna from Capo-Testa to Punta Monterosso. Marine protected areas may be marked by lit or unlit buoys and beacons.

Yachtsmen are advised to navigate with caution. For further details consult the relevant pilot guides. (ILNW 227/19)

M7 (Ed 11/2016) WGS 84

Sardegna Marine Reserves

A marine protection zone has been established around the N coast of Sardegna from Capo-Testa to Punta Monterosso. Marine protected areas may be marked by lit or unlit buoys and beacons.

Yachtsmen are advised to navigate with caution. For further details consult the relevant pilot guides. (ILNW 227/19)

M8 (Ed 5/2015) WGS 84

Sardegna Marine Reserves

A marine protection zone has been established around the N coast of Sardegna from Capo di Mte Russu to Punta Monterosso. Marine protected areas may be marked by lit or unlit buoys and beacons.

Yachtsmen are advised to navigate with caution. For further details consult the relevant pilot guides. (ILNW 227/19)

M10 (Ed 3/2011) WGS 84

Notification of new edition

A new 2019 edition of this chart will shortly be published. In addition to the listed corrections the chart specification has been improved to show coloured light flashes. There has been general updating throughout. (ILNW 156/19)

M12 (Ed 4/2018) WGS 84

Ibiza-Tagomago Marine Reserve

Insert limit of marine reserve, restricted area, joining:

38°59'·6N 1°33'·7E (Ibiza coast)

38°58'·0N 1°35'·5E

39°01'·0N 1°38'·9E

39°01'·9N 1°39'·1E (Isla de Tagomago SE)

and

39°02'·4N 1°38'·6E (Isla de Tagomago N)

39°03'·8N 1°37'·5E (N border of chart)

Add assoc. label *Integral and Marine Reserves* (see Note). (ILNW 204/19)

Torrevieja (Main chart & Plan B)

Amend Lt:

Fl.G.4s15m7M to Fl(4)G.10s15m7M in 37°57'·87N 0°41'·24W (Main chart & Plan B)

Fl(3)R.11·5s11m3M to Fl(4)R.20s11m3M in 37°58'·00N 0°41'·31W (Plan B)

Fl(4)R.11s to Fl(2)R.7s in 37°58'·43N 0°40'·93W (Plan B) (ILNW 206/19)

Altea

Amend Lt Fl(3)G.5M&Fl(2)R.3M to Fl.G.5M&Fl.R.3M in 38°35'·2N 0°03'·5W (ILNW 212/19)

Altea (Plan E)

Amend Lt:

Fl(3)G.9s12m5M to Fl.G.3s12m5M in 38°35'·16N 0°03'·24W

Fl(2)R.6s9m3M to Fl.R.3s9m3M in 38°35'·28N 0°03'·29W (ILNW 212/19)

Pta de Ifach

Amend Lt Fl.G.4s5M to Fl(4)G.11s5M in 38°38'·2N 0°04'·1E. Fl(4)R Lt remains unchanged (ILNW 218/19)

Javea

Amend Lt Fl.G.3s5M to Fl(4)G.11s5M in 38°47'·8N 0°11'·2E (ILNW 307/19)

M13 (Ed 1/2016) WGS 84

San Carlos de la Rápita

Amend range of Lt Fl(2)R.8s3M to 6M in 40°36'·5N 0°36'·2E (ILNW 149/19)

Ibiza-Tagomago Marine Reserve

Insert limit of marine reserve, restricted area, joining:

38°59'·6N 1°33'·7E (Ibiza coast)

38°58'·0N 1°35'·5E

39°01'·0N 1°38'·9E

39°01'·9N 1°39'·1E (Isla de Tagomago SE)

and

39°02'·4N 1°38'·6E (Isla de Tagomago N)

39°05'·3N 1°36'·2E (Ibiza coast)

Add assoc. label *Marine Reserve* (see Note). (ILNW 204/19)

Barcelona, Automatic Identification Systems

Insert racon sym & assoc. lgd AIS at Lt:

Fl(2)15s26M in 41°21'·7N 2°10'·0E

Fl.5s23M in 41°19'·5N 2°09'·1E (ILNW 209/19)

Barcelona, Automatic Identification Systems (Plan D)

Insert racon sym & assoc. lgd AIS at Lt:

Fl(2)15s108m26M in 41°21'·66N 2°09'96E

Fl.5s32m23M in 41°19'·51N 2°09'·14E

Insert racon sym & assoc. lgd A/S at Y special pillar Lt buoy:

Fl.Y.5s3M in 41°19'·50N 2°12'·50E

Fl.Y.5s in 41°19'·00N 2°12'·50E (ILNW 209/19)

Anchorage - Biocenosis

Further to ILNW 478/18, yachtsmen are advised that the seabed, extending 1.5 miles seaward from the coast of Mallorca, is partially covered with protected biocenosis. Yachtsmen must anchor with extreme care. (ILNW 215/19)

Pta Ifach

Amend Lt Fl.G.4s5M to Fl(4)G.11s5M in 38°38'·1N 0°03'·9E (ILNW 218/19)

Javea

Amend Lt Fl.G.3s5M to Fl(4)G.11s5M in 38°47'·6N 0°11'·2E (ILNW 307/19)

M14 (Ed 4/2017) WGS 84

Palamós, Automatic Identification Systems

Insert racon sym & assoc. lgd AIS at Lt:

Oc(1+4)18s18M in 41°50'·5N 3°07'·7E

Fl(2)7s5M in 41°50'·2N 3°07'·3E (ILNW 207/19)

Palamós, Automatic Identification Systems (Plan D)

Insert racon sym & assoc. lgd AIS at:

Lt Oc(1+4)18s22m18M in 41°50'·49N 3°07'·74E

Isolated danger Lt Bn **La Llosa or Laja de Palamós** in 41°50'·15N 3°07'·27E (ILNW 207/19)

Barcelona, Automatic Identification Systems

Insert racon sym & assoc. lgd AIS at Lt:

Fl(2)15s26M in 41°21'·7N 2°10'·0E

Fl.5s23M in 41°19'·5N 2°09'·1E (ILNW 209/19)

Barcelona, Automatic Identification Systems (Plan A)

Insert racon sym & assoc. lgd AIS at Lt:

Fl(2)15s108m26M in 41°21'·66N 2°09'96E

Fl.5s32m23M in 41°19'·51N 2°09'·14E

Insert racon sym & assoc. lgd A/S at Y special pillar Lt buoy:

Fl.Y.5s3M in 41°19'·50N 2°12'·50E

Fl.Y.5s in 41°19'·00N 2°12'·50E (ILNW 209/19)

Golfe de Fos SW

Delete fog signal Whis at YB S cardinal pillar Lt buoy **Faraman** Q(6)+LFl.15s in 43°18'·7N 4°38'·5E (ILNW 243/19)

Golfe de Fos SW (Main chart & Plan J)

Delete fog signal Whis at YB S cardinal Lt Bn **Roustan Sud** Q(6)+LFl.15s in 43°18'·7N 4°50'·8E (ILNW 244/19)

Cabo de San Sebastián, Automatic Identification System

Insert racon sym & assoc. lgd AIS at Lt Fl.5s32M in 41°53'·9N 3°12'·1E (ILNW 297/19)

M15 (Ed 4/2015) WGS 84

Golfe du Lion

Delete fog signal Whis at:

YB S cardinal pillar Lt buoy Q(6)+LFl.15s in 43°18'·7N 4°38'·5E

YB S cardinal Lt Bn Q(6)+LFl.15s in 43°18'·7N 4°50'·8E (ILNW 243/19)

Nice (Main chart & Plan F)

Amend Lt Fl.R.5s21m20M to Fl.R.4s21m8M in 43°41'·43N 7°17'·29E (ILNW 266/19)

M16 (Ed 7/2016) WGS 84

Golfo Marconi (Plan C)

Works are now complete at Marina Chiavari.

Replace pecked line with pontoon between 44°18'·74N 9°19'·20E and 44°18'·77N 9°19'·08E.

Delete assoc. arrow and label *Being reclaimed (2014)* centred on 44°18'·90N 9°19'·50E. (ILNW 150/19)

Nice

Amend Lt Fl.R.5s21m20M to Fl.R.4s21m8M in 43°41'·4N 7°17'·2E (ILNW 266/19)

M17 (Ed 4/2017) WGS 84

Isola del Giglio

Amend range of Lt Fl(4)30s90m7M to 23M in 42°19'·3N 10°55'·2E. AIS remains unchanged (ILNW 222/19)

Portovecchio di Piombino

Insert Lt Fl.R.3s8M in 42°56'·0N 10°33'·6E. (ILNW 223/19)

M19 (Ed 11/2018) WGS 84

Capo di Milazzo Marine Reserve

A marine protected area has been established around Capo di Milazzo. Insert limit of restricted area, marine reserve, joining:

38°15'·3N 15°14'·1E (coast)

38°15'·3N 15°13'·0E

38°17'·0N 15°13'·0E

38°17'·0N 15°14'·8E

38°15'·8N 15°15'·2E

38°15'·8N 15°14'·7E (coast)

Add assoc. label *Marine Reserve (see Note)*. (ILNW 274/19)

M20 (Ed 3/2011) WGS 84

Turkey, Anadolu

Amend Lt LFl.20M to Fl.20M in 41°13'·2N 29°09'·8E (ILNW 141/19)

Isola del Giglio

Amend range of Lt Fl(4)7M to 23M in 42°18'·7N 10°54'·6E (ILNW 222/19)

Porto Civitanova

Amend Lt **Pto Civitanova** Mo(C)11M to Fl(4)11M in 43°18'·7N 13°43'·6E (ILNW 325/19)

M21 (Ed 1/2011) WGS 84

Mersin (Correction amended see ILNW 345/19)

Amend Lt desc Fl.R.&Fl.G.10M to Fl.R.7M&Fl.G.10M in 36°47'·09N 34°38'·52E (ILNW 147/19)

Mersin (Plan C)

Amend range of Lt Fl.R.3s9m10M to 7M in 36°47'·09N 34°38'·52E plus delete racon sym and lgd AIS (ILNW 148/19)

M22 (Ed 7/2018) WGS 84

Nahsholim W

Insert lit platform sym. in 32°35'·9N 34°48'·3E (ILNW 182/19)

Haifa W

Insert Y spher. Lt buoy Fl.Y plus racon sym. & assoc. lgd A/S in 32°49'·1N 34°22'·8E (ILNW 240/19)

Hefa (Haifa) (Plan C)

Delete:

BY N cardinal pillar Lt buoy VQ plus assoc. racon sym & lgd A/S in 32°50'·15N 35°01'·09E

YBY W cardinal pillar Lt buoy Q(9)15s plus assoc. racon sym & lgd A/S in 32°49'·96N 35°01'·38E (ILNW 299/19)

M23 (Ed 11/2014) WGS 84

Pescara

Amend range of Lt Fl.R&Fl.G.8M to 1M in 42°27'·8N 14°14'·0E. Fl(3)20s17M remains unchanged. (ILNW 237/19)

Isole Tremiti

Amend range of Lt Fl.5s4M to 6M in 42°08'·4N 15°31'·1E (ILNW 305/19)

M24 (Ed 12/2014) WGS 84

Notification of new edition

A new 2019 edition of this chart will shortly be published. In addition to the listed corrections the chart specification has been improved to show coloured light flashes. The latest depth surveys have been included where available. Harbour developments at Punat are included. Brand new harbour plans of Novigrad and Poreč are included for the first time. There has been general updating throughout. (ILNW 158/19)

M26 (Ed 6/2017) WGS 84

Kanal Malog Stona

Amend range of Lt Rt Blaca Fl.5s9m8M to 4M in 42°55'·45N 17°31'·12E (ILNW 181/19)

Approaches to Split (Plan C)

Insert Lt Fl(2)R.5s3m2M in 43°30'·13N 16°25'·30E (ILNW 217/19)

M30 (Ed 2/2015) WGS 84

Strait of Otranto

Delete limit of restricted area, no anchoring, no fishing, plus assoc. lgd *Moored Storage Tanker (lit)* Racon(U) centred on 40°55'·0N 18°20'·0E (ILNW 159/19)

Isole Tremiti

Amend range of Lt Fl.5s4M to 6M in 42°08'·4N 15°31'·1E (ILNW 305/19)

M31 (Ed 8/2015) WGS 84

Capo di Milazzo Marine Reserve

A marine protected area has been established around Capo di Milazzo. Insert limit of restricted area, marine reserve, joining:

38°15'·3N 15°14'·1E (coast)

38°15'·3N 15°13'·0E

38°17'·0N 15°13'·0E

38°17'·0N 15°14'·8E

38°15'·8N 15°15'·2E

38°15'·8N 15°14'·7E (coast)

Add assoc. label *Marine Reserve* (see Note). (ILNW 274/19)

M32 (Ed 9/2015) WGS 84

Pescara

Amend range of Lt:

Fl.R&Fl.G.8M to 1M in 42°28'·1N 14°13'·7E

Fl(2)G.5M to 7M in 42°28'·3N 14°14'·1E (ILNW 237/19)

Isole Tremiti, I. Caprara (Main chart & Plan D)

Amend Lt Fl.5s23m4M to Fl.5s22m6M in 42°08'·30N 15°31'·15E (ILNW 305/19)

M33 (Ed 9/2015) WGS 84

Porto di Ravenna (Plan B)

Replace foul sym. with *Obstn* depth 2·7m in 44°29'·45N 12°17'·82E (ILNW 179/19)

Pescara (Plan G)

Amend range of Lt:

Fl.G.4s13m8M to 1M in 42°28'·17N 14°13'·74E

Fl.R.4s13m8M to 1M in 42°28'·16N 14°13'·79E

Fl(2)R.10s10m8M to 7M in 42°28'·23N 14°13'·99E

Fl(2)G.10s10m5M to 7M in 42°28'·32N 14°14'·07E (ILNW 237/19)

Pescara

Amend range of Lt Fl.R&Fl.G.8M to 1M in 42°27'·7N 14°13'·7E (ILNW 237/19)

M35 (Ed 5/2014) WGS 84

Pantelleria (Plan E)

Insert semi-circular limit of restricted area, entry prohibited, joining: 36°50'·25N 11°56'·80E (E border)

36°50'·36N 11°56'·68E

36°50'·47N 11°56'·80E (E border)

Add assoc. lgd *Unexploded Ordnance*. (ILNW 180/19)

M40 (Ed 6/2014) WGS 84

Isola del Giglio

Amend range of Lt Fl(4)30s7M to 23M in 42°19'·3N 10°55'·2E. AIS remains unchanged (ILNW 222/19)

Nice

Amend Lt Fl.R.5s20M to Fl.R.4s8M in 43°41'·7N 7°17'·7E (ILNW 266/19)

M45 (Ed 8/2015) WGS 84

Marina di San Rocco NW

Insert dangerous wreck sym in 42°43'·97N 10°56'·39E (ILNW 221/19)

Isola del Giglio

Amend range of Lt Fl(4)30s90m7M to 23M in 42°19'·3N 10°55'·2E. AIS remains unchanged (ILNW 222/19)

Portovecchio di Piombino

Insert Lt Fl.R.3s12m8M in 42°55'·96N 10°33'·66E. (ILNW 223/19)

M47 (Ed 5/2018) WGS 84

Marine Reserves

A marine protected area has been established around Capo di Milazzo. Insert limit of restricted area, marine reserve, joining:

38°15'·25N 15°14'·07E (coast)

38°15'·25N 15°13'·19E

38°15'·57N 15°12'·96E

38°16'·96N 15°12'·96E

38°16'·96N 15°14'·81E

38°15'·83N 15°15'·19E

38°15'·83N 15°14'·65E (coast)

Add assoc. label *Marine Reserve* (see Note)

Amend note: **MARINE RESERVES** to:

MARINE RESERVES

Entry into marine reserves are affected by numerous restrictions and prohibitions. For further details see inside the chart cover, consult the local authorities and, **Italian Waters Pilot**. (ILNW 274/19)

M49 (Ed 8/2015) WGS 84

Mazara del Vallo (Plan F)

Insert drying wreck sym. in 37°39'·00N 12°34'·82E (ILNW 178/19)

G11 (Ed 2/2017) WGS 84

N. Erikóussa (Plan A)

Insert Lt Fl.G&Fl.R.3s7m3M in 39°52'·70N 19°34'·83E (ILNW 241/19)

G2 (Ed 8/2013) WGS 84

Marmara Denizi, Silivri

Amend Lt Fl.G&Fl.R.5M to Fl.R.5M in 41°04'·3N 28°14'·3E (ILNW 238/19)

G22 (Ed 5/2018) WGS 84

Nara Geçidi (Plan D)

Insert racon sym and assoc. lgd AIS at YBY W card Lt buoy Q(9)15s in 40°06'·49N 26°22'·86E

Amend Lt Fl.R.5s to Fl(4)Y.10s in 40°06'·34N 26°22'·69E (ILNW 142/19)

Lapseki

Amend Lt Fl(3)Y.8s5M to Fl(3)Y.6s5M in 40°20'·98N 26°41'·05E (ILNW 298/19)

G23 (Ed 8/2018) WGS 84

Silivri

Amend Lt Fl.G&R.5s5M to Fl.R.5s5M in 41°04'·30N 28°14'·34E. AIS remains unchanged. (ILNW 238/19)

Silivri SW

Insert Y special pillar Lt buoy Fl.Y.3s in:

41°02'·42N 28°09'·93E

41°02'·39N 28°12'·78E (ILNW 239/19)

Yalova

Insert Lt Fl(4)Y.10s5M in:

40°39'·63N 29°16'·22E

40°39'·70N 29°16'·79E

Amend range of Lt Fl.G&R.3s8M to 5M in 40°39'·65N 29°14'·76E. AIS remains unchanged. (ILNW 242/19)

Princes Islands, Kinaliada (Plan C)

Delete Y special con Lt buoy Fl.Y in 40°54'·98N 29°02'·58E (ILNW 306/19)

G25 (Ed 2/2009) WGS 84

Notification of new edition

A new 2019 edition of this chart will shortly be published. In addition to the listed corrections the chart specification has been improved to show coloured light flashes. A new plan showing the passage around Nisoi Likhades is included. There has been general updating throughout. (ILNW 202/19)

G28 (Ed 5/2018) WGS 84

Nemrut Limani

Works are now complete at jetties south of Sirtlan Br. centred on 38°47'·0N 26°54'·8E. Delete assoc. maritime limit and label *Works in progress (2017)*. (ILNW 151/19)

Ilica Br.

The Petkim Security zone has been replaced with an entry prohibited area. Replace Igd *Petkim Security Zone (see Note)* with *Entry Prohibited (see Note)* centred on 38°48'·7N 26°52'·7E. Amend last line of chart note ENTRY PROHOBITED AREAS to "... (38°26'N, 26°43'E), (38°30'N, 26°43'E) & (38°48'N, 26°54'E)."

Delete chart note PETKIM SECURITY ZONE (ILNW 155/19)

G36 (Ed 5/2015) WGS 84

Fethiye (Plan D)

Delete dangerous wreck sym. in 36°38'·79N 29°05'·75E (ILNW 265/19)

E2 (Ed 10/2018) WGS 84

Dársena de Los Llanas (Plan E)

Amend Lt Q(3)10s8m5M to VQ(3)5s9m5M in 28°27'·96N 16°14'·52W (ILNW 139/19)

Dársena Pesquera (Plan F)

Amend Lt Q(6)+LFI.15s10m5M to VQ(6)+LFI.10s11m5M 28°29'·31N 16°13'·11W (ILNW 140/19)

E3 (Ed 3/2011) WGS 84

Notification of new edition

A new 2019 edition of this chart will shortly be published. In addition to the listed corrections the chart specification has been improved to show coloured light flashes. There has been general updating throughout. (ILNW 157/19)

A2 (Ed 3/2016) WGS 84

Horse Shoe Reef W

Move underwater Rk sym., enclosed by danger line, in 18°34'·35N 64°17'·09W to 18°34'·35N 64°17'·66W (ILNW 173/19)

A23 (Ed 1/2013) WGS 84

Horse Shoe Reef W

Move underwater Rk sym., enclosed by danger line, in 18°34'·35N 64°17'·09W to 18°34'·35N 64°17'·66W (ILNW 173/19)

A232 (Ed 10/2016) WGS 84

Horse Shoe Reef W

Move underwater Rk sym., enclosed by danger line, in 18°34'·35N 64°17'·09W to 18°34'·35N 64°17'·66W (ILNW 173/19)

A233 (Ed 10/2016) WGS 84

Tortola to Anegada, Horse Shoe Reef W

Move underwater Rk sym., enclosed by danger line, in 18°34'·35N 64°17'·09W to 18°34'·35N 64°17'·66W (ILNW 173/19)

A3 (Ed 10/2012) WGS 84

Montserrat E

Insert R spar Lt buoy *FAD* FI in 16°47'·2N 62°07'·8W (ILNW 245/19)

A25 (Ed 2/2012) WGS 84

Montserrat

Fish Aggregating Devices (FADs) normally marked by light buoys exist in the coastal waters of this chart. Anchoring, dredging, fishing and trawling are prohibited within a radius of 1 mile around these devices. Further FADs may be established without notice.

Insert R spar Lt buoy *FAD* FI in:

16°42'·02N 62°16'·85W

16°46'·05N 62°07'·88W

16°47'·20N 62°07'·83W

(ILNW 245/19)

A26 (Ed 11/2006) WGS 84

Barbuda west coast, Codrington Lagoon

As a result of two hurricanes in 2017 a new pass between the sea and Codrington Lagoon has opened up. This pass can be found approximately 400m South of the now derelict Lighthouse Bay Resort Hotel. This pass is wide and deep enough to be used by RIBs or other dinghies to pass into the lagoon and visit Codrington (Street 2019). (ILNW 233/19)

A28 (Ed 1/2017) WGS 84

Petit Cul-de-Sac Marin

Insert Or spher. buoy *FAD* in 16°10'·62N 61°29'·70W (ILNW 275/19)

B (Ed 9/2016) WGS 84

Carriacou SE

Delete underwater Rk sym. in 12°23'·7N 61°22'·6W (ILNW 144/19)

B1 (Ed 7/2013) WGS 84

Laborie Bay (Plan F)

Delete YB S cardinal Lt Bn Q(6)+LFI in 13°44'·82N 60°59'·93W (ILNW 232/19)

Marigot Bay (Plan D)

Insert depth 2·4m in 13°57'·96N 61°01'·36W

Replace depth 2·8m with depth 1·6m in 13°57'·90N 61°01'·56W (ILNW 285/19)

B3 (Ed 12/2015) WGS 84

Carriacou SE

Delete dangerous underwater Rk sym in 12°23'·75N 61°22'·64W (ILNW 144/19)

B5 (Ed 2/2018) WGS 84

Carriacou SE

Delete underwater Rk sym. in 12°23'·7N 61°22'·6W (ILNW 144/19)

ESMED150N (Ed 10/2018) WGS 84

San Carlos de la Rápita

Amend range of Lt FI(2)R.8s8m3M to 6M in 40°36'·55N 0°36'·27E (ILNW 149/19)

Seagrass (Posidonia)

The seabed around Ibiza, Formentera, Mallorca and Menorca is partially covered by seagrass (Posidonia). Extreme caution should be used when anchoring to avoid damaging the ecosystem. Port authorities should be consulted about the most suitable anchorage areas. (ILNW 203/19)

Ibiza-Tagomago Marine Reserve (3200.1)

Insert limit of marine reserve, restricted area, joining:

38°59'·6N 1°33'·7E (Ibiza coast)

38°58'·0N 1°35'·5E

39°01'·0N 1°38'·9E

39°01'·9N 1°39'·1E (Isla de Tagomago SE)

and

39°02'·4N 1°38'·6E (Isla de Tagomago N)

39°05'·3N 1°36'·2E (Ibiza coast)

Add assoc. label *Marine Reserve* (see Note). (ILNW 204/19)

Automatic Identification System

Insert racon sym & assoc. lgd AIS at Lt Oc(1+4)18s18M in 41°50'·49N 3°07'·75E (ILNW 207/19)

Barcelona, Automatic Identification System

Insert racon sym & assoc. lgd AIS at Lt FI(2)15s108m26M in 41°21'·66N 2°09'·96E (ILNW 209/19)

Automatic Identification Systems

Insert racon sym & assoc. lgd AIS at Lt:

FI.5s167m32M in 41°53'·76N 3°12'·15E

FI(3)9s14m6M in 41°51'·76N 3°11'·14E (ILNW 211/19)

Automatic Identification Systems

Insert racon sym & assoc. lgd AIS at Lt:

Cabo de Tossa FI(3+1)20s60m21M in 41°42'·94N 2°56'·04E

FI(3+2)20s50m18M in 41°36'·49N 2°38'·79E (ILNW 213/19)



Depths in Metres

This chart is a free download
NOT TO BE USED FOR NAVIGATION



Caution

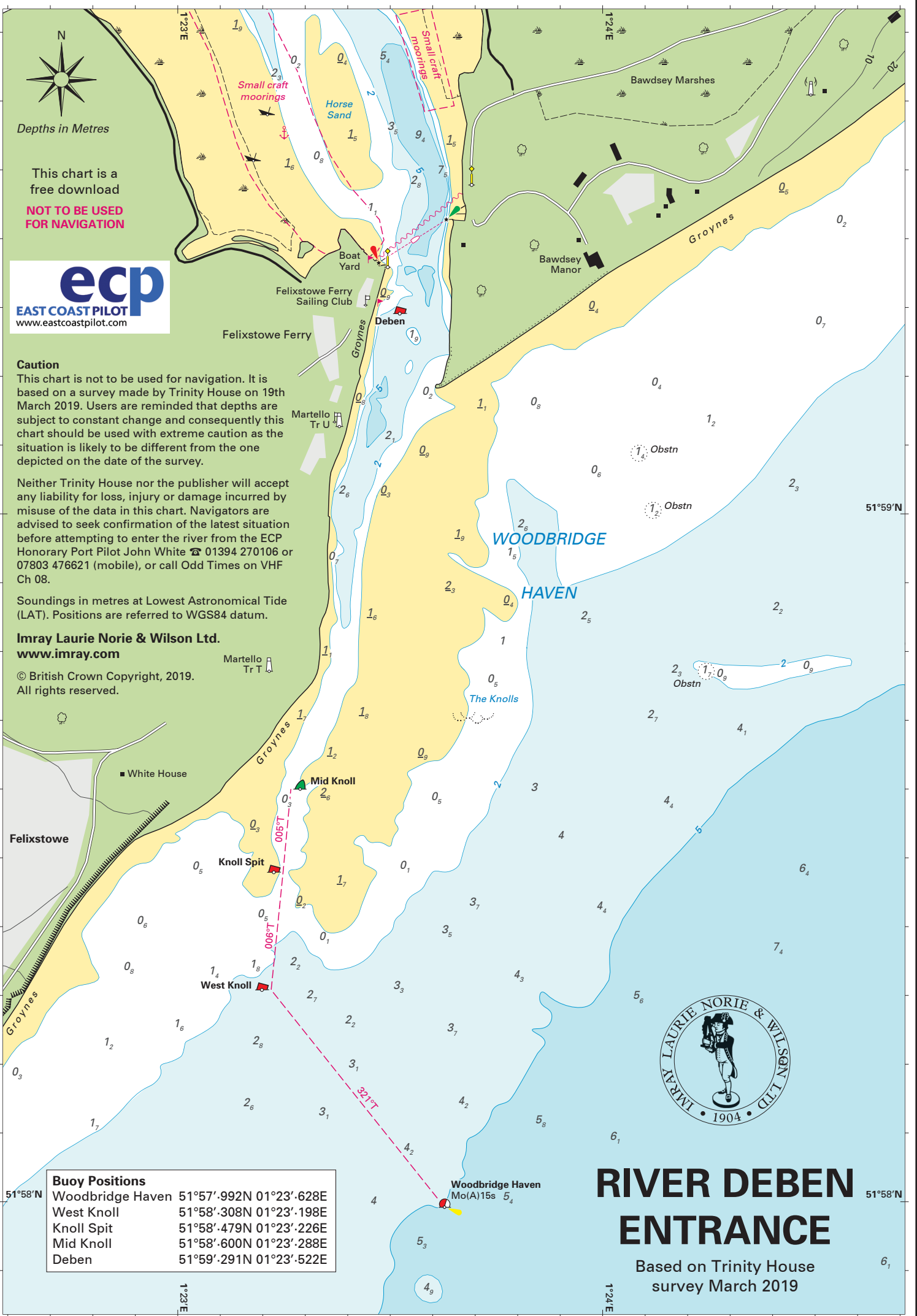
This chart is not to be used for navigation. It is based on a survey made by Trinity House on 19th March 2019. Users are reminded that depths are subject to constant change and consequently this chart should be used with extreme caution as the situation is likely to be different from the one depicted on the date of the survey.

Neither Trinity House nor the publisher will accept any liability for loss, injury or damage incurred by misuse of the data in this chart. Navigators are advised to seek confirmation of the latest situation before attempting to enter the river from the ECP Honorary Port Pilot John White ☎ 01394 270106 or 07803 476621 (mobile), or call Odd Times on VHF Ch 08.

Soundings in metres at Lowest Astronomical Tide (LAT). Positions are referred to WGS84 datum.

Imray Laurie Norie & Wilson Ltd.
www.imray.com

© British Crown Copyright, 2019.
All rights reserved.



Buoy Positions	
Woodbridge Haven	51°57'.992N 01°23'.628E
West Knoll	51°58'.308N 01°23'.198E
Knoll Spit	51°58'.479N 01°23'.226E
Mid Knoll	51°58'.600N 01°23'.288E
Deben	51°59'.291N 01°23'.522E



RIVER DEBEN ENTRANCE

Based on Trinity House survey March 2019