

Norie's Bulletin of Corrections

No.4 from 1st October to 31st December 2019

The following new editions of charts have been published since Norie's Bulletin No.3 to 30th September 2019 was issued. These supersede previous editions for which corrections will no longer be available. New editions often contain extensive new hydrographic information or are new drawings.

NEW EDITIONS OF EXISITING CHARTS		<i>Scale</i>	<i>Edition date</i>	<i>Year of edition replaced</i>
A231	St Thomas to Virgin Gorda	1:90 000	Oct-19	2016
A232	Tortola to Anegada	1:90 000	Oct-19	2016
A233	Virgin Islands	1:90 000	Oct-19	2016
C35	Baie de Morlaix to L'Aber-Ildut	1:75 000	Nov-19	2013

World Geodetic System 1984 (WGS 84)

Most Imray charts are based on WGS 84 datum. Each chart listed in this bulletin includes details of the datum on which it is based. Positions referred to in corrections will also refer to the specific datum of the chart and no offset is needed.

The corrections listed in this bulletin can also be viewed and downloaded from our website www.imray.com

Bearings are true and from seaward.

Imray Laurie Norie & Wilson Ltd

Wych House The Broadway
St Ives Cambridgeshire PE27 5BT
☎ +44 (0)1480 462114

This bulletin contains corrections for the following charts:

C1 (Ed 1/2018)	C65 (Ed 7/2016)	2150 (Ed 2/2019)	M18 (Ed 4/2019)
C2 (Ed 7/2016)	C66 (Ed 4/2016)	2200+2 (Ed 4/2018)	M22 (Ed 7/2018)
C3 (Ed 5/2018)	C67 (Ed 11/2017)	2200+4 (Ed 4/2018)	M29 (Ed 7/2015)
C4 (Ed 6/2017)	C68 (Ed 7/2017)	2200+5 (Ed 4/2018)	m30 (Ed 2/2015)
C5 (Ed 7/2016)	C69 (Ed 9/2018)	2200+6 (Ed 4/2018)	M31 (Ed 8/2015)
C6 (Ed 7/2018)	C70 (Ed 4/2016)	2200+7 (Ed 4/2018)	M33 (Ed 9/2015)
C7 (Ed 7/2017)	C80 (Ed 5/2018)	2200+8 (Ed 4/2018)	M36 (Ed 7/2016)
C8 (Ed 9/2017)	Y7 (Ed 2/2018)	2200+9 (Ed 4/2018)	M40 (Ed 6/2014)
C10 (Ed 2/2018)	Y9 (Ed 3/2018)	2200+10 (Ed 4/2018)	M49 (Ed 8/2015)
C12 (Ed 2/2018)	Y17 (Ed 11/2017)	2200+11 (Ed 4/2018)	M50 (Ed 6/2017)
C14 (Ed 10/2017)	y18 (Ed 4/2016)	2300+1 (Ed 1/2019)	G11 (Ed 2/2017)
C15 (Ed 5/2018)	Y31 (Ed 4/2018)	2300+3 (Ed 1/2019)	G2 (Ed 8/2013)
C18 (Ed 1/2016)	Y33 (Ed 6/2016)	2300+5 (Ed 1/2019)	G23 (Ed 8/2018)
C19 (Ed 2/2019)	Y34 (Ed 4/2018)	2300+10 (Ed 1/2019)	G26 (Ed 5/2016)
C23 (Ed 8/2017)	Y35 (Ed 4/2018)	2400+4 (Ed 4/2019)	G3 (Ed 8/2014)
C24 (Ed 6/2018)	Y36 (Ed 4/2018)	2400+9 (Ed 4/2019)	G38 (Ed 4/2015)
C25 (Ed 8/2017)	Y37 (Ed 4/2018)	2400+14 (Ed 4/2019)	E1 (Ed 6/2016)
C26 (Ed 4/2017)	Y38 (Ed 4/2018)	2500+1 (Ed 3/2017)	E2 (Ed 10/2018)
C27 (Ed 9/2018)	Y41 (Ed 1/2019)	2510+1 (Ed 5/2015)	A2 (Ed 3/2016)
C29 (Ed 9/2016)	Y45 (Ed 4/2019)	2600+1 (Ed 12/2016)	A231 (Ed 10/2016)
C30 (Ed 4/2019)	2000+8 (Ed 3/2018)	2600+2 (Ed 12/2016)	A232 (Ed 10/2016)
C31 (Ed 7/2019)	2000+9 (Ed 3/2018)	2700+3 (Ed 5/2016)	A233 (Ed 10/2016)
C32 (Ed 9/2017)	2100+1 (Ed 2/2018)	2700+4 (Ed 5/2016)	A233 (Ed 10/2019)
C35 (Ed 10/2013)	2100+4 (Ed 2/2018)	2700+12 (Ed 5/2016)	A3 (Ed 10/2012)
C36 (Ed 6/2019)	2100+5 (Ed 2/2018)	2800+7 (Ed 11/2012)	A24 (Ed 6/2016)
C39 (Ed 8/2017)	2100+7 (Ed 2/2018)	2900+5 (Ed 4/2013)	A27 (Ed 12/2015)
C48 (Ed 4/2015)	2100+11 (Ed 2/2018)	2900+7 (Ed 4/2013)	A271 (Ed 6/2017)
C52 (Ed 9/2015)	2110+5 (Ed 1/2017)	3200 (Ed 10/2018)	A28 (Ed 1/2017)
C53 (Ed 9/2018)	2110+7 (Ed 1/2017)	3220 (Ed 7/2019)	B4 (Ed 4/2009)
C58 (Ed 10/2018)	2110+8 (Ed 1/2017)	M6 (Ed 11/2016)	B6 (Ed 5/2009)
C60 (Ed 9/2017)	2110+9 (Ed 1/2017)	M10 (Ed 5/2019)	
C61 (Ed 3/2016)	2120 (Ed 2/2019)	M14 (Ed 4/2017)	
C62 (Ed 7/2016)	2130 (Ed 3/2019)	M15 (Ed 4/2015)	
C63 (Ed 9/2016)	2140 (Ed 4/2019)	M16 (Ed 7/2016)	

C1 (Ed 1/2018) WGS 84

Pegwell Bay

The entrance to the River Stour channel has migrated S. The safe water buoy is no longer within the extents of this chart. Delete RW safe water spher. buoy PA (Apr-Sep) in 51°18'·90N 1°23'·49E (ILNW 636/19)

C2 (Ed 7/2016) WGS 84

Limehouse Reach

Insert mooring buoy sym in:

51°29'·42N 0°01'·77W

51°29'·40N 0°01'·74W

51°29'·35N 0°01'·69W

51°29'·33N 0°01'·68W

A section of the pontoon plus assoc Lts at Convoys Wharf have been removed.

Delete minor R Lt in:

51°29'·29N 0°01'·67W

51°29'·27N 0°01'·64W

Delete BYB E card pillar Lt buoy VQ(3)5s in 51°29'·28N 0°01'·63W (ILNW 585/19)

C3 (Ed 5/2018) WGS 84

Southampton Water

Replace G con buoy with G starboard Bn in 50°52'·22N 1°21'·18W

Delete G Lt Bn in:

50°49'·25N 1°19'·24W

50°49'·19N 1°19'·34W (ILNW 561/19)

Lymington River (Plan A)

Insert Y spher. Lt buoy Fl.Y.4s in 50°45'·20N 1°31'·60W

Amend Lt desc. at Lt Bn:

Fl.G.2s to Q.G in 50°45'·15N 1°31'·43W

Fl.G.2s to Q.G in 50°45'·09N 1°31'·13W

Fl.R.2s to Q.R in 50°45'·06N 1°31'·17W

Fl.G.2s to Q.G in 50°44'·81N 1°31'·09W

Amend Lt desc. at R can Lt buoy Fl.R.2s to Q.R in 50°44'·81N 1°31'·16W

The Y spher. buoy in 50°45'·14N 1°31'·48W is now lit. Add Lt desc. Fl.Y.4s (ILNW 574/19)

Lymington River (Plan A)

Delete Y Lt Bn:

with triangle topmark in 50°45'·09N 1°31'·53W

with inverted triangle topmark in 50°45'·09N 1°31'·55W

plus assoc. lgd 2F.Y (ILNW 628/19)

C4 (Ed 6/2017) WGS 84

Bill of Portland

Amend range of LIGHTHOUSE Fl(4)20s43m25M to 18M in 50°30'·85N 2°27'·38W. F.R.19m13M Lt remains unaltered. (ILNW 549/19)

c5 (Ed 7/2016) WGS 84

Bill of Portland

Amend range of LIGHTHOUSE Fl(4)20s43m25M to 18M in 50°30'·85N 2°27'·38W. F.R.19m13M Lt remains unaltered. (ILNW 549/19)

Brixham (Plan F)

Insert jetty, line, joining:

50°24'·00N 3°30'·92W (shore)

50°24'·03N 3°30'·88W (ILNW 629/19)

Bridport Harbour (Plan A)

Insert depth 1·4m in 50°42'·52N 2°45'·82W. Delete depth 1·7m close NW (ILNW 641/19)

C6 (Ed 7/2018) WGS 84

Approaches to Falmouth

Delete YB S cardinal pillar Lt buoy (4 buoys) VQ(6)+LFI.10s in 50°06'·16N 4°59'·63W (ILNW 575/19)

C7 (Ed 7/2017) WGS 84

Approaches to Falmouth

Delete YB S cardinal pillar Lt buoy VQ(6)+LFI.10s (4 buoys) in 50°06'·17N 4°59'·63W (ILNW 575/19)

C8 (Ed 9/2017) WGS 84

Pegwell Bay (Main chart & Plan E)

The entrance to the River Stour channel has migrated S.

Move RW safe water pillar Lt buoy Sandwich LFI.10s PA (LFI.10s Main chart) in 51°18'·90N 1°23'·50E to 51°18'·53N 1°23'·32E (ILNW 636/19)

c10 (Ed 2/2018) WGS 84

Bill of Portland

Amend range of Lt Fl(4)20s43m25M to 18M in 50°30'·9N 2°27'·4W. F.R.13M Lt remains unaltered. (ILNW 549/19)

c12 (Ed 2/2018) WGS 84

Bill of Portland

Amend range of Lt Fl(4)20s43m25M to 18M in 50°30'·9N 2°27'·4W. F.R.13M Lt remains unaltered. (ILNW 549/19)

Le Havre

Amend Lt Fl.R.5s15m21M to Fl.R.4s15m8M in 49°29'·3N 0°05'·5E (ILNW 630/19)

C14 (Ed 10/2017) WGS 84

River Tamar

Insert *Wk* depth 3·5m in 50°24'·80N 4°12'·30W (ILNW 637/19)

C15 (Ed 5/2018) WGS 84

Southampton Water

Insert Y special Bn in 50°53'·93N 1°24'·68W

Replace G con buoy with G starboard Bn in 50°52'·22N 1°21'·18W (ILNW 561/19)

River Itchen (Plan B)

Delete mooring buoy '5' in 50°54'·43N 1°23'·05W (ILNW 562/19)

Lymington River

Amend Lt desc. at Lt Bn:

Fl.G.2s to Q.G in 50°45'·15N 1°31'·43W

Fl.G.2s to Q.G in 50°45'·09N 1°31'·13W

Fl.G.2s to Q.G in 50°44'·81N 1°31'·09W

Amend Lt desc. at R can Lt buoy Fl.R.2s to Q.R in 50°44'·81N 1°31'·16W (ILNW 574/19)

Lymington River (Plan D)

Insert Y spher. Lt buoy Fl.Y.4s in:

50°45'·20N 1°31'·60W

50°45'·14N 1°31'·48W

Amend Lt desc. at Lt Bn:

No 11 Fl.G.2s to Q.G in 50°45'·15N 1°31'·43W

No 9 Cage Boom Fl.G.2s3M to Q.G.3M in 50°45'·09N 1°31'·13W

Cocked Hat Fl.R.2s to Q.R in 50°45'·06N 1°31'·17W

Tar Barrel Fl.G.2s to Q.G in 50°44'·81N 1°31'·09W

Amend Lt desc. at R can Lt buoy **8A** Fl.R.2s to Q.R in 50°44'·81N 1°31'·16W (ILNW 574/19)

River Itchen (Plan B)

Insert mooring buoy '1' in 50°54'·36N 1°23'·14W

Mooring buoy '4' in 50°54'·41N 1°23'·07W is now lit. Add Lt desc Fl.Y.3s (ILNW 583/19)

Beaulieu River (Plan G)

Insert Igd *Works (2019)* centred on 50°48'·11N 1°25'·30W

Replace R port Bn **8** with R port Lt Bn **8** Fl.R.4s in 50°47'·03N 1°21'·99W (ILNW 587/19)

Cowes & River Medina Approaches

Yachtsmen are advised that the Small Craft Channel in the eastern approaches to the River Medina has been repositioned along a centre line joining approx.:

50°46'·02N 1°17'·44W

50°45'·94N 1°17'·55W

50°45'·78N 1°17'·65W

The channel has been dredged to 2·25m (2019) and, renamed as the Eastern Channel. Buoyage has been amended accordingly.

Replace existing note **COWES SMALL CRAFT CHANNEL** with:

COWES EASTERN CHANNEL

Small craft, less than 20m in length, approaching or departing Cowes from or to the north or east may use the Eastern Channel

provided that there is sufficient water in relation to their draught. Tide gauges are situated on Shrape Beacon (50°46'·09N 1°16'·90W)

and 4A Beacon (50°45'·75N 1°17'·63W). When there is sufficient water, small craft are advised to use the Eastern Channel in

preference to the fairways. Small craft bound to Cowes from Southampton Water are also advised that it is possible to avoid the

Precautionary Area by crossing the Solent to the east of the Bramble Bank, setting a course towards the Sharpe Beacon before altering

course to the west for the Eastern Channel. (ILNW 620/19)

Approaches to Cowes (Plan I)

Insert accompanying block correction centred on 50°45'·92N 1°17'·37W (ILNW 620/19)

Lymington River (Plan D)

Delete minor Lt F.Y & assoc. structure colour R in:

50°45'·10N 1°31'·53W

50°45'·09N 1°31'·55W (ILNW 628/19)

C18 (Ed 1/2016) WGS 84

Bill of Portland

Amend range of Lt Fl(4)25M to 18M in 50°30'·9N 2°27'·4W. F.R.13M Lt remains unaltered. (ILNW 549/19)

Plateau du Four SW

Amend Lt at floating turbine Mo(U)Y.15s to Mo(U)15s in 47°14'·4N 2°46'·5W. AIS remains unchanged. (ILNW 565/19)

Wales, The Smalls NW

Delete Y spher. Lt buoy FI(5)Y in 51°50'·3N 5°50'·4W (ILNW 644/19)

C19 (Ed 2/2019) WGS 84

Viana do Castelo W

Delete lit platform sym FI.7M in 41°41'·2N 9°03'·3W (ILNW 566/19)

C23 (Ed 8/2017) WGS 84

Wick Bay (Plan A)

Insert Lt Bn with inverted triangle topmark 3Oc.R.6s (vert)(occas) in 58°26'·41N 3°04'·98W (ILNW 584/19)

Stonehaven (Plan M)

Delete Y spher Lt buoy FI(5)Y.20s in 56°57'·97N 2°11'·31W (ILNW 589/19)

Marr Bank SE

Insert Y con Lt buoy FI(5)Y.20s in 56°17'·67N 1°26'·54W (ILNW 624/19)

Arbroath E & Saint Andrews Bay

Delete:

Y special pillar Lt buoy FI(5)Y.20s in 56°33'·27N 2°29'·52W

Y special spher. Lt buoy FI(5)Y.20s in 56°20'·50N 2°43'·50W (ILNW 627/19)

C24 (Ed 6/2018) WGS 84

Whitley Bay E

Insert dangerous wreck sym. in 55°03'·1N 1°23'·8W (ILNW 600/19)

Blyth NE

Delete Lt wind turbine sym. **2 WIND TURBINES** 2FI.Y.5M Horn Mo(U)30s in 55°08'·23N 1°29'·53W (ILNW 611/19)

St Andrews Bay

Delete Y special spher. Lt buoy FI(5)Y.20s in 56°20'·50N 2°43'·50W (ILNW 627/19)

C25 (Ed 8/2017) WGS 84

Scheveningen (Plan D)

Delete Lt F.R in 52°05'·84N 4°15'·58E (ILNW 563/19)

Amethyst Field E

Insert lit platform & assoc. racon sym. & lgd AIS in 53°37'·7N 0°56'·2E (ILNW 573/19)

Bure Field

Delete Y special pillar Lt buoy FI.Y.5s in 53°07'·6N 2°24'·8E (ILNW 576/19)

Markham Field

Delete lit platform **49/5a** in 53°50'·5N 2°52'·1E (ILNW 579/19)

c26 (Ed 4/2017) WGS 84

Brunsbüttel (Plan J)

Insert YB S cardinal pillar Lt buoy VQ(6)+LFI.10s in:

53°53'·22N 9°08'·12E

53°53'·22N 9°08'·21E

Insert minor Y Lt F in:

53°53'·28N 9°08'·82E

53°53'·28N 9°08'·85E (ILNW 629/19)

C27 (Ed 9/2018) WGS 84

Saint Andrews Bay

Delete Y special spher. Lt buoy FI(5)Y.20s in 56°20'·50N 2°43'·50W (ILNW 627/19)

C29 (Ed 9/2016) WGS 84

Amethyst Gas Field E

Insert lit platform & assoc. racon sym. & lgd AIS in 53°37'·66N 0°56'·17E (ILNW 573/19)

C30 (Ed 4/2019) WGS 84

Wind Farm Borssele

Yachtsmen are advised that the Wind Farm Borssele precautionary areas have been changed to entry prohibited areas. Replace maritime limit with restricted area limit, entry prohibited, joining:

51°45'·97N 2°51'·93E

51°48'·36N 3°03'·98E

51°45'·63N 3°07'·06E
51°41'·69N 3°08'·20E
51°41'·24N 3°08'·07E
and
51°33'·82N 3°03'·53E
51°44'·69N 2°45'·36E
51°45'·86N 2°51'·39E
51°40'·43N 3°07'·83E
51°36'·02N 3°06'·54E (ILNW 647/19)

C31 (Ed 7/2019) WGS 84

Le Havre

Amend Lt:

Fl.R.5s21M to Fl.R.4s8M in 49°29'·19N 0°05'·44E

VQ(3)G.11M to Fl.G.4s8M in 49°29'·06N 0°05'·38E (ILNW 630/19)

Le Havre Yacht Harbour (Plan H)

Amend Lt:

Fl.R.5s15m21M to Fl.R.4s15m8M in 49°29'·19N 0°05'·44E

VQ(3)G.2s15m11M to Fl.G.4s15m8M in 49°29'·06N 0°05'·38E (ILNW 630/19)

C32 (Ed 9/2017) WGS 84

Le Havre

Amend Lt:

Fl.R.5s to Fl.R.4s8M in 49°29'·20N 0°05'·44E

VQ(3)G.11M to Fl.G.4s8M in 49°29'·06N 0°05'·38E (ILNW 630/19)

Le Havre Yacht Harbour (Plan A)

Amend Lt:

Fl.R.5s15m21M to Fl.R.4s15m8M in 49°29'·20N 0°05'·44E

VQ(3)G.2s15m11M to Fl.G.4s15m8M in 49°29'·06N 0°05'·38E (ILNW 630/19)

c35 (Ed 10/2013) WGS 84

Notification of new edition

A new 2019 edition of this chart will shortly be published. In addition to the listed corrections the chart specification has been improved to show coloured light flashes. Updated depth surveys have been included where applicable. The harbour plans of L'Aber-Ildut and Argenton are now drawn at a scale of 1:25 000. The plan showing the approaches to Roscoff has been extended east to include better approach coverage to Blosson Marina. There has been general updating throughout. (ILNW 555/19)

C36 (Ed 6/2019) WGS 84

Port de Brest (Plan C)

Replace depth 0·3m with drying height -0·2m in 48°22'·23N 4°28'·51W (ILNW 638/19)

C39 (Ed 8/2017) WGS 84

Plateau du Four SW

Amend Lt at floating turbine Mo(U)Y.15s (R Lt) to Mo(U)15s (R Lt) in 47°14'·4N 2°46'·5W. AIS remains unchanged. (ILNW 565/19)

C48 (Ed 4/2015) WGS 84

Canal Principal (Plans E & F)

Move Y special spher. Lt buoy ODAS FI(5)Y.20s in 42°27'·49N 9°00'·17W to 42°27'·65N 9°00'·72W (ILNW 615/19)

C52 (Ed 9/2015) WGS 84

Caernarfon Bar (Plan G)

Move Lt buoy:

C1 in 53°07'·06N 4°24'·52W to 53°07'·04N 4°24'·43W

C2 in 53°07'·12N 4°24'·22W to 53°07'·14N 4°24'·38W

C3 in 53°07'·17N 4°23'·95W to 53°07'·20N 4°24'·01W plus amend Lt desc. Fl(3)G.10s to Q.G

C4 in 53°07'·10N 4°22'·84W to 53°07'·16N 4°23'·03W

C6 in 53°07'·08N 4°21'·74W to 53°07'·21N 4°21'·95W (ILNW 556/19)

Conwy Bay (Plan B)

Insert drying height -2m in 53°17'·85N 3°53'·95W, extend approx. 0m contour SW to enclose plus delete depth 2·1m & assoc. 2m contour close S. (ILNW 594/19)

Conwy Bay (Plan B)

Insert lgd *Less water* centred on:

53°19'·00N 3°53'·00W

53°17'·36N 3°55'·20W (ILNW 640/19)

c53 (Ed 9/2018) WGS 84

Killybegs (Plan J)

Construction works are underway to extend North Quay. Insert lgd *Works in progress (2019)* centred on 54°37'·85N 8°26'·40W (ILNW 633/19)

C58 (Ed 10/2018) WGS 84

River Camel (Plan G)

Insert R pillar Lt buoy **Daymer** LFI.R.10s in 50°33'·50N 4°56'·12W

Move G con Lt buoy **Doom Bar** FI.G.5s in 50°33'·42N 4°56'·21W to 50°33'·40N 4°56'·28W (ILNW 622/19)

c60 (Ed 9/2017) WGS 84

Off Smalls TSS

Delete:

Y spher. Lt buoy FI(5)Y.20s in 51°50'·68N 5°50'·19W

Y special pillar Lt buoy FI(5)Y.20s in 51°50'·47N 5°50'·47W (ILNW 644/19)

c61 (Ed 3/2016) WGS 84

Caernarfon Bar (Plan H)

Amend Lt desc FI(3)G.10s to Q.G at G con Lt buoy **C3** in 53°07'·17N 4°23'·95W

Move Lt buoy:

C4 in 53°07'·10N 4°22'·84W to 53°07'·16N 4°23'·03W

C6 in 53°07'·08N 4°21'·74W to 53°07'·21N 4°21'·95W (ILNW 556/19)

Off Smalls TSS

Delete Y spher. Lt buoy FI(5)Y.20s in 51°50'·3N 5°50'·4W (ILNW 644/19)

C62 (Ed 7/2016) WGS 84

Strangford Lough (Plan C)

Delete BRB isolated danger Lt Bn Platform FI(2)10s in 54°22'·12N 5°32'·77W plus assoc. *Obstn* sym. (ILNW 625/19)

Portavogie

Amend Lt Iso.WRG.5s9m10-8M to Iso.WRG.5s6m5M in 54°27'·5N 5°26'·1W. There have been changes to the Lt sectors as follows: 162° (approx. N shore limit) - G - 262° - W - 272° - R - 350° (ILNW 642/19)

C63 (Ed 9/2016) WGS 84

Irvine (Main chart & Plan Q)

Main chart

Delete Lt FI.G in 55°36'·17N 4°42'·04W

Plan Q

Amend lgd (*see note*) to (*see Caution*) centred on 55°36'·15N 4°42'·30W

Replace existing note **DEPTHS** with:

CAUTION

Irvine harbour is not currently being maintained, there are reports of numerous underwater obstructions. Entry is not advised without local knowledge.

Replace G Lt Bn FI.G.3s6m5M with Bn sym. plus assoc. lgd (ru) in 55°36'·17N 4°42'·04W

Delete:

minor Lt star in 55°36'·46N 4°41'·52W

Lt F.R.15m5M in 55°36'·43N 4°41'·50W

Lt F.G.10m5M in 55°36'·40N 4°41'·57W

plus assoc. leading line & lgd Ldg Lts 051° extending in direction 231° (ILNW 626/19)

C65 (Ed 7/2016) WGS 84

Glasnacardoch Bay N

Insert rock which covers & uncovers plus assoc. drying height -2.2m in 56°59'·93N 5°50'·19W (ILNW 599/19)

c66 (Ed 4/2016) WGS 84

Glasnacardoch Bay N

Insert rock which covers & uncovers plus assoc. drying height -2.2m in 56°59'·93N 5°50'·19W (ILNW 599/19)

C67 (Ed 11/2017) WGS 84

Stornoway Harbour (Plan D)

Further to ILNW 255/19 the Lt Iso.WRG.3s8m3M in 58°11'·29N 6°22'·83W is now in operation. There have been changes to the Lt sectors

as follows:

150° - Iso.G - 174° - Iso.W - 185° - Iso.R - 205° (ILNW 571/19)

Eilean Dubh W

Replace depth 16m with depth 2.9m, enclosed by 5m contour in 57°58'·6N 5°26'·6W (ILNW 645/19)

C68 (Ed 7/2017) WGS 84

Wick Bay (Plan F)

Insert Lt Bn with inverted triangle topmark 3Oc.R.6s (vert)(occas) in 58°26'·41N 3°04'·98W (ILNW 584/19)

C69 (Ed 9/2018) WGS 84

Belfast Lough

Insert depth 1.6m in 54°43'·97N 5°43'·91W delete depth 4 close W (ILNW 597/19)

Donaghadee Sound (Plan E)

Replace depth 3.2m with depth 0.7m in 54°39'·46N 5°32'·52W (ILNW 598/19)

Entrance to Strangford Lough (Main chart & Plan F)

Delete BRB isolated danger Lt Bn Fl(2)10s in 54°22'·12N 5°32'·77W. (ILNW 625/19)

Portavogie

Amend Lt Iso.WRG.5s9m10-8M to Iso.WRG.5s6m5M in 54°27'·44N 5°26'·12W. There have been changes to the Lt sectors as follows:
182° (approx. N shore limit) - G - 262° - W - 272° - R - 350° (ILNW 642/19)

c70 (Ed 4/2016) WGS 84

Amethyst Field

Insert lit platform & assoc. racon sym. & lgd AIS in 53°37'·7N 0°56'·2E (ILNW 573/19)

Markham Gas Field

Delete lit platform in 53°50'·5N 2°52'·0E (ILNW 579/19)

Whitley Bay E

Insert dangerous wreck sym. in 55°03'·1N 1°23'·8W (ILNW 600/19)

C80 (Ed 5/2018) WGS 84

Outer Silver Pit SE

Delete platform sym. in 53°50'·5N 2°52'·1E (ILNW 579/19)

Celtic Deep

Delete Y special pillar Lt buoy in 51°50'·3N 5°50'·4W (ILNW 644/19)

y7 (Ed 2/2018) WGS 84

Pegwell Bay

The entrance to the River Stour channel has migrated S. The safe water buoy is no longer within the extents of this chart.
Delete RW safe water pillar Lt buoy LFl.10s in 51°18'·91N 1°23'·49E (ILNW 636/19)

Y9 (Ed 3/2018) WGS 84

Black Buoy Sand

Replace Y special con buoy with Y special spher. Lt buoy Q.Y in:
52°55'·99N 0°06'·63E
52°56'·04N 0°06'·12E (ILNW 623/19)

Holbeach Firing Practice Area

Insert Y con buoy:

DZ No 8 in 52°53'·02N 0°13'·31E. Delete Y con Lt buoy **DZ No 8** Fl.Y.5s close SW

DZ No 10 in 52°51'·65N 0°12'·95E

DZ No 11 in 52°50'·89N 0°12'·63E. Delete Y con Lt buoy **DZ No 11** Fl.Y.3s close NW

Delete Y con Lt buoy **DZ No 10** Fl(2)Y.5s in 52°51'·39N 0°13'·00E (ILNW 643/19)

Y17 (Ed 11/2017) WGS 84

River Crouch, Wallasea Island

The jetty at Ringwood point has been removed.

Delete minor R Lt in:

51°37'·04N 0°50'·71E

51°37'·04N 0°50'·83E

Delete minor Y Lt in 51°37'·04N 0°50'·76E (ILNW 588/19)

Spitway

Insert drying height -0m in 51°42'·24N 1°07'·23E, extend 0m contour E to enclose (ILNW 610/19)

Ray Sand Channel & Ray Sand

Insert depth:

1.4m in 51°41'·69N 1°01'·03E

0.9m in 51°41'·30N 1°00'·15E, extend 2m contour W to enclose

0.2m in 51°41'·17N 1°00'·34E

Insert drying height -2.3m in:

51°39'·04N 0°58'·76E

51°38'·96N 0°58'·25E (ILNW 613/19)

y18 (Ed 4/2016) WGS 84

Rainham Creek

Delete R can buoy in:

51°22'·92N 0°36'·61E

51°23'·01N 0°36'·78E (ILNW 558/19)

Y31 (Ed 4/2018) WGS 84

Lyminster River (Plan A)

Insert Y spher. Lt buoy Fl.Y.4s in:

50°45'·20N 1°31'·60W

50°45'·14N 1°31'·48W

Amend Lt desc. at Lt Bn:

Fl.G.2s to Q.G in 50°45'·15N 1°31'·43W

Fl.G.2s4m3M to Q.G.4m3M in 50°45'·09N 1°31'·13W

Fl.R.2s to Q.R in 50°45'·06N 1°31'·17W

Fl.G.2s to Q.G in 50°44'·81N 1°31'·09W

Amend Lt desc. at R can Lt buoy Fl.R.2s to Q.R in 50°44'·81N 1°31'·16W (ILNW 574/19)

Lyminster River (Plan A)

Delete minor Lt & assoc. structure colour R in:

50°45'·09N 1°31'·53W

50°45'·09N 1°31'·54W

plus assoc. lgd 2F.Y (ILNW 628/19)

y33 (Ed 6/2016) WGS 84

Chichester Harbour

Insert:

Obstrn, drying height -1.4m in 50°47'·76N 0°56'·14W

Obstrn, drying height -1.6m in 50°47'·11N 0°55'·50W (ILNW 545/19)

Langstone Harbour, Broom Channel

Insert depth 1.9m in 50°48'·77N 1°01'·84W. Delete depth 2.6m close SE

Insert drying height -0.2m in 50°48'·69N 1°01'·75W & extend 0m contour S to enclose (ILNW 646/19)

y34 (Ed 4/2018) WGS 84

Chichester Harbour

Insert:

Obstrn, drying height -1.4m in 50°47'·76N 0°56'·14W

Obstrn, drying height -1.6m in 50°47'·11N 0°55'·50W (ILNW 545/19)

Langstone Harbour

Insert depth 1.9m in 50°48'·77N 1°01'·84W. Delete depth 2.6m close SE

Insert drying height -0.2m in 50°48'·69N 1°01'·75W & extend 0m contour S to enclose (ILNW 646/19)

Y35 (Ed 4/2018) WGS 84

Gosport

Insert minor R Lt in 50°47'·32N 1°07'·01W

Delete minor R Lt in 50°47'·32N 1°07'·17W (ILNW 559/19)

y36 (Ed 4/2018) WGS 84

Cowes & River Medina Approaches

Yachtsmen are advised that the Small Craft Channel in the eastern approaches to the River Medina has been repositioned along a centre line joining approx.:

50°46'·02N 1°17'·44W

50°45'·94N 1°17'·55W

50°45'·78N 1°17'·65W

The channel has been dredged to 2.25m (2019) and, renamed as the Eastern Channel. Buoyage has been amended accordingly.

Replace existing note **SMALL CRAFT CHANNEL** with:

COWES EASTERN CHANNEL

Small craft, less than 20m in length, approaching or departing Cowes from or to the north or east may use the Eastern Channel provided that there is sufficient water in relation to their draught. Tide gauges are situated on Shrape Beacon (50°46'·09N 1°16'·90W) and 4A Beacon (50°45'·75N 1°17'·63W). When there is sufficient water, small craft are advised to use the Eastern Channel in preference to the fairways. Small craft bound to Cowes from Southampton Water are also advised that it is possible to avoid the Precautionary Area by crossing the Solent to the east of the Bramble Bank, setting a course towards the Sharpe Beacon before altering course to the west for the Eastern Channel. (ILNW 620/19)

Y37 (Ed 4/2018) WGS 84

Southampton Water

Insert Y special Bn in 50°53'·93N 1°24'·68W

Replace G con buoy with G starboard Bn in 50°52'·22N 1°21'·18W (ILNW 561/19)

y38 (Ed 4/2018) WGS 84

Lyminster River

Amend Lt desc. at Lt Bn:

Fl.G.2s to Q.G in 50°45'·15N 1°31'·43W

Fl.G.2s to Q.G in 50°45'·09N 1°31'·13W

Fl.G.2s to Q.G in 50°44'·81N 1°31'·09W

Amend Lt desc. at R can Lt buoy Fl.R.2s to Q.R in 50°44'·81N 1°31'·16W (ILNW 574/19)

y41 (Ed 1/2019) WGS 84

Brixham (Plan D)

Insert jetty, line, joining:

50°24'·00N 3°30'·92W (shore)

50°24'·03N 3°30'·88W (ILNW 629/19)

y45 (Ed 4/2019) WGS 84

River Tamar

Insert Wk depth 3·5m in 50°24'·80N 4°12'·30W (ILNW 637/19)

2000+8 (Ed 3/2018) WGS 84

Spitway

Insert drying height -0m in 51°42'·24N 1°07'·23E, extend 0m contour E to enclose (ILNW 610/19)

Ray Sand Channel & Ray Sand

Insert depth:

1·4m in 51°41'·69N 1°01'·03E

0·9m in 51°41'·30N 1°00'·15E, extend 2m contour W to enclose

0·2m in 51°41'·17N 1°00'·34E

Insert drying height -2·3m in:

51°39'·04N 0°58'·76E

51°38'·96N 0°58'·25E (ILNW 613/19)

2000+9 (Ed 3/2018) WGS 84

River Crouch, Wallasea Island

The jetty at Ringwood point has been removed.

Delete minor R Lt in:

51°37'·04N 0°50'·71E

51°37'·04N 0°50'·83E

Delete minor Y Lt in 51°37'·04N 0°50'·76E (ILNW 588/19)

2100+1 (Ed 2/2018) WGS 84

Pegwell Bay

The entrance to the River Stour channel has migrated S. The safe water buoy is no longer within the extents of this chart.

Delete RW safe water pillar Lt buoy LFl.10s in 51°18'·91N 1°23'·49E (ILNW 636/19)

2100+4 (Ed 2/2018) WGS 84

Limehouse Reach (Panel B)

A section of the pontoon plus assoc Lts at Convoys Wharf have been removed.

Delete minor R Lt in:

51°29'·29N 0°01'·67W

51°29'·27N 0°01'·64W

Delete BYB E card pillar Lt buoy VQ(3)5s in 51°29'·29N 0°01'·63W

Yachtsmen are advised that there are numerous mooring buoys between Convoys Wharf & South Dock Marina (ILNW 585/19)

2100+5 (Ed 2/2018) WGS 84

Rainham Creek

Delete R can buoy in:

51°22'·92N 0°36'·63E

51°23'·01N 0°36'·80E (ILNW 558/19)

Milton Creek

Delete Y Bn with diamond topmark in:

51°21'·11N 0°45'·34E

51°21'·15N 0°45'·23E

51°20'·94N 0°44'·74E

51°20'·98N 0°44'·69E (ILNW 609/19)

2100+7 (Ed 2/2018) WGS 84

Pegwell Bay

The entrance to the River Stour channel has migrated S.

Move RW safe water pillar Lt buoy LFl.10s in 51°18'·91N 1°23'·49E to 51°18'·53N 1°23'·32E (ILNW 636/19)

2100+11 (Ed 2/2018) WGS 84

River Stour Entrance (Plan B)

The entrance to the River Stour channel has migrated S.

Move RW safe water pillar Lt buoy **Sandwich** LFl.10s PA in 51°18'·90N 1°23'·50E to 51°18'·53N 1°23'·32E (ILNW 636/19)

2110+5 (Ed 1/2017) WGS 84

Le Havre

Amend Lt:

Fl.R.5s21M to Fl.R.4s8M in 49°29'·20N 0°05'·44E

VQ(3)G.11M to Fl.G.4s8M in 49°29'·06N 0°05'·38E (ILNW 630/19)

2110+7 (Ed 1/2017) WGS 84

Le Havre

Amend Lt:

Fl.R.5s15m21M to Fl.R.4s15m8M in 49°29'·20N 0°05'·44E

VQ(3)G.2s15m11M to Fl.G.4s15m8M in 49°29'·06N 0°05'·38E (ILNW 630/19)

2110+8 (Ed 1/2017) WGS 84

Le Havre (Plan A)

Amend Lt:

Fl.R.5s15m21M to Fl.R.4s15m8M in 49°29'·19N 0°05'·44E

VQ(3)G.2s15m11M to Fl.G.4s15m8M in 49°29'·06N 0°05'·38E (ILNW 630/19)

2110+9 (Ed 1/2017) WGS 84

Le Havre

Amend Lt:

Fl.R.5s to Fl.R.4s8M in 49°29'·20N 0°05'·44E

VQ(3)G.11M to Fl.G.4s8M in 49°29'·06N 0°05'·38E (ILNW 630/19)

2120 (Ed 2/2019) WGS 84

Scheveningen (2120.8 Plan A)

Delete minor R Lt in 52°05'·85N 4°15'·58E (ILNW 563/19)

Wind Farm Borssele (2120.1)

Yachtsmen are advised that the Wind Farm Borssele precautionary areas have been changed to entry prohibited areas. Replace maritime limit with restricted area limit, entry prohibited, joining:

51°46'·0N 2°51'·9E

51°48'·4N 3°04'·0E

51°45'·6N 3°07'·1E

51°41'·7N 3°08'·2E

51°41'·2N 3°08'·1E

and

51°33'·8N 3°03'·5E

51°44'·7N 2°45'·4E

51°45'·9N 2°51'·4E

51°40'·4N 3°07'·8E

51°36'·0N 3°06'·5E (ILNW 647/19)

Wind Farm Borssele (2120.11)

Yachtsmen are advised that the Wind Farm Borssele precautionary areas have been changed to entry prohibited areas. Replace maritime limit with restricted area limit, entry prohibited, joining:

51°46'·0N 2°51'·9E

51°48'·4N 3°04'·0E

51°45'·6N 3°07'·1E

51°41'·7N 3°08'·2E

51°41'·2N 3°08'·1E

and

51°33'·8N 3°03'·5E

51°44'·7N 2°45'·4E

51°45'·9N 2°51'·4E

51°40'·4N 3°07'·8E

51°36'·0N 3°06'·5E (ILNW 647/19)

2130 (Ed 3/2019) WGS 84

Everingen (2130.5)

Move Lt buoy:

E 12 VQ.R to 51°21'·70N 3°52'·05E

E 12A Iso.R.2s to 51°21'·91N 3°52'·40E (ILNW 578/19)

Oude Roompot (2130.14)

Insert depth 2·5m in 51°38'·84N 3°35'·31E extend 5m contour N to enclose (ILNW 586/19)

Straatje van Willem (2130.5)

Insert depth 0·1m in 51°21'·74N 3°52'·02E extend 2m contour S to enclose (ILNW 590/19)

2140 (Ed 4/2019) WGS 84

Dordtsche Kil (2140.10)

Insert R port can Lt buoy **D 2A** LFl.R.8s in 51°46'·27N 4°37'·69E (ILNW 546/19)

2150 (Ed 2/2019) WGS 84

Emshörn Plate N (2150.16)

Insert depth 0-5m in 53°29'·00N 6°54'·49E and extend 2m contour S (ILNW 564/19)

Vliestroom (2150.6)

Insert BYB E cardinal pillar Lt buoy **BS 1-IN 2** VQ(3)5s in 53°15'·44N 5°09'·37E

Replace G starboard con Lt buoy **BS 1** VQ.G with G starboard spar buoy **IN 1** in 53°15'·44N 5°09'·24E (ILNW 577/19)

Inschot (2150.7)

Insert:

BYB E cardinal pillar Lt buoy **BS 1-IN 2** VQ(3)5s in 53°15'·44N 5°09'·37E

G pillar buoy **IN 1A** in 53°14'·95N 5°09'·26E

R pillar buoy **IN 2A** in 53°14'·95N 5°09'·39E

G pillar buoy **IN 1B** in 53°14'·36N 5°09'·23E

R pillar buoy **IN 2B** in 53°14'·36N 5°09'·44E

Replace:

G starboard con Lt buoy **BS 1** VQ.G with G starboard spar buoy **IN 1** in 53°15'·44N 5°09'·24E

BYB E cardinal pillar Lt buoy **BS 3-IN 2** VQ(3)5s with G starboard con Lt buoy **BS 3** LFI.G.5s in 53°14'·95N 5°09'·66E

Move G con Lt buoy **BS 1a** Iso.G.8s to 53°15'·19N 5°09'·41E

Delete G starboard spar buoy **IN 1** in 53°14'·54N 5°09'·00E (ILNW 577/19)

Medemgrund S (2150.22 Panel 2)

Insert foul sym. in 53°50'·60N 8°49'·40E (ILNW 601/19)

Schuitensand (2150.16)

Insert depth 0-5m in 53°32'·38N 6°57'·46E extend 2m contour NE to enclose (ILNW 602/19)

Eierlandsche Gronden (2150.5)

Insert lgd *Less water* centred on 53°22'·00N 4°83'·50E (ILNW 614/19)

Brunsbüttel (2150.21 Plan E)

Insert minor Y Lt F in:

53°53'·28N 9°08'·82E

53°53'·28N 9°08'·85E

Move YB S cardinal pillar Lt buoy VQ(6)+LFI.10s in 53°53'·24N 9°08'·08E to 53°53'·22N 9°08'·12E (ILNW 629/19)

2200+2 (Ed 4/2018) WGS 84

Lymington River (Plan A)

Insert Y spher. Lt buoy FI.Y.4s in:

50°45'·20N 1°31'·60W

50°45'·14N 1°31'·48W

Amend Lt desc. at Lt Bn:

FI.G.2s to Q.G in 50°45'·15N 1°31'·43W

FI.G.2s4m3M to Q.G.4m3M in 50°45'·09N 1°31'·13W

FI.R.2s to Q.R in 50°45'·06N 1°31'·17W

FI.G.2s to Q.G in 50°44'·81N 1°31'·09W

Amend Lt desc. at R can Lt buoy FI.R.2s to Q.R in 50°44'·81N 1°31'·16W (ILNW 574/19)

Lymington River (Plan A)

Delete minor Lt & assoc. structure colour R in:

50°45'·09N 1°31'·53W

50°45'·09N 1°31'·54W

plus assoc. lgd 2F.Y (ILNW 628/19)

2200+4 (Ed 4/2018) WGS 84

Chichester Harbour

Insert:

Obstrn, drying height -1.4m in 50°47'·76N 0°56'·14W

Obstrn, drying height -1.6m in 50°47'·11N 0°55'·50W (ILNW 545/19)

Langstone Harbour

Insert depth 1.9m in 50°48'·77N 1°01'·84W. Delete depth 2.6m close SE

Insert drying height -0.2m in 50°48'·69N 1°01'·75W & extend 0m contour S to enclose (ILNW 646/19)

2200+5 (Ed 4/2018) WGS 84

Gosport

Insert minor R Lt in 50°47'·32N 1°07'·01W

Delete minor R Lt in 50°47'·32N 1°07'·17W (ILNW 559/19)

2200+6 (Ed 4/2018) WGS 84

Cowes & River Medina Approaches

Yachtsmen are advised that the Small Craft Channel in the eastern approaches to the River Medina has been repositioned along a centre line joining approx.:

50°46'·02N 1°17'·44W

50°45'·94N 1°17'·55W

50°45'·78N 1°17'·65W

The channel has been dredged to 2·25m (2019) and, renamed as the Eastern Channel. Buoyage has been amended accordingly. Replace existing note **SMALL CRAFT CHANNEL** with:

COWES EASTERN CHANNEL

Small craft, less than 20m in length, approaching or departing Cowes from or to the north or east may use the Eastern Channel provided that there is sufficient water in relation to their draught. Tide gauges are situated on Shrape Beacon (50°46'·09N 1°16'·90W) and 4A Beacon (50°45'·75N 1°17'·63W). When there is sufficient water, small craft are advised to use the Eastern Channel in preference to the fairways. Small craft bound to Cowes from Southampton Water are also advised that it is possible to avoid the Precautionary Area by crossing the Solent to the east of the Bramble Bank, setting a course towards the Sharpe Beacon before altering course to the west for the Eastern Channel. (ILNW 620/19)

2200+7 (Ed 4/2018) WGS 84

Southampton Water

Insert Y special Bn in 50°53'·93N 1°24'·68W

Replace G con buoy with G starboard Bn in 50°52'·22N 1°21'·18W (ILNW 561/19)

2200+8 (Ed 4/2018) WGS 84

Lymington River

Amend Lt desc. at Lt Bn:

Fl.G.2s to Q.G in 50°45'·15N 1°31'·43W

Fl.G.2s to Q.G in 50°45'·09N 1°31'·13W

Fl.G.2s to Q.G in 50°44'·81N 1°31'·09W

Amend Lt desc. at R can Lt buoy Fl.R.2s to Q.R in 50°44'·81N 1°31'·16W (ILNW 574/19)

2200+9 (Ed 4/2018) WGS 84

Cowes & River Medina Approaches (Plan C)

Insert accompanying block correction centred on 50°45'·85N 1°17'·37W (ILNW 620/19)

2200+10 (Ed 4/2018) WGS 84

Beaulieu River (Plan C)

Insert lgd *Works (2019)* centred on 50°48'·11N 1°25'·30W

Replace R port Bn **8** with R port Lt Bn **8** Fl.R.4s in 50°47'·03N 1°21'·99W (ILNW 587/19)

2200+11 (Ed 4/2018) WGS 84

Southampton Water

Insert Y special Bn in 50°53'·93N 1°24'·68W

Delete mooring buoy in:

50°52'·24N 1°23'·18W

50°52'·18N 1°23'·09W

plus assoc. ground tackle, pecked line, & lgd *A Trot.* (ILNW 561/19)

River Itchen

Delete mooring buoy '5' in 50°54'·43N 1°23'·05W (ILNW 562/19)

River Itchen

Insert mooring buoy '1' in 50°54'·36N 1°23'·14W

Mooring buoy '4' in 50°54'·41N 1°23'·07W is now lit. Add Lt desc Fl.Y.3s (ILNW 583/19)

2300+1 (Ed 1/2019) WGS 84

Bill of Portland

Amend range of **LT HO**. Fl(4)20s43m25M to 18M in 50°30'·9N 2°27'·4W. F.R.19m13M Lt remains unaltered. (ILNW 549/19)

2300+3 (Ed 1/2019) WGS 84

Bill of Portland

Amend range of **LIGHTHOUSE** Fl(4)20s43m25M to 18M in 50°30'·85N 2°27'·38W. F.R.19m13M Lt remains unaltered. (ILNW 549/19)

2300+5 (Ed 1/2019) WGS 84

Bill of Portland

Amend range of **LIGHTHOUSE** Fl(4)20s43m25M to 18M in 50°30'·85N 2°27'·38W. F.R.19m13M Lt remains unaltered. (ILNW 549/19)

Bridport Harbour (Plan B)

Insert depth 1·4m in 50°42'·52N 2°45'·82W. Delete depth 1·7m close NW (ILNW 641/19)

2300+10 (Ed 1/2019) WGS 84

Brixham (Plan D)

Insert jetty, line, joining:

50°24'·00N 3°30'·92W (shore)

50°24'·03N 3°30'·88W (ILNW 629/19)

2400+4 (Ed 4/2019) WGS 84

River Camel

Insert R pillar Lt buoy **Daymer** LFI.R.10s in 50°33'·50N 4°56'·12W
Move G con Lt buoy **Doom Bar** FI.G.5s in 50°33'·42N 4°56'·21W to 50°33'·40N 4°56'·28W (ILNW 622/19)

2400+9 (Ed 4/2019) WGS 84

Approaches to Falmouth

Delete YB S cardinal pillar Lt buoy VQ(6)+LFI.10s (*4 buoys*) in 50°06'·17N 4°59'·63W (ILNW 575/19)

2400+14 (Ed 4/2019) WGS 84

River Tamar

Insert *Wk* depth 3·5m in 50°24'·80N 4°12'·30W (ILNW 637/19)

2500+1 (Ed 3/2017) WGS 84

Bill of Portland

Amend range of Lt FI(4)20s25M to 18M in 50°30'·9N 2°27'·4W. F.R.13M Lt remains unaltered. (ILNW 549/19)

2510+1 (Ed 5/2015) WGS 84

Notification of new edition

A new 2020 edition of this chart pack will shortly be published. In addition to the listed corrections the chart specification has been improved to show coloured light flashes. Updated depth surveys have been included where applicable. There has been general updating throughout. (ILNW 655/19)

2600+1 (Ed 12/2016) WGS 84

TSS off Smalls

Delete Y spher. Lt buoy FI(5)Y.20s in 51°50'·3N 5°50'·4W (ILNW 644/19)

2600+2 (Ed 12/2016) WGS 84

River Camel (Plan A)

Insert R pillar Lt buoy **Daymer** LFI.R.10s in 50°33'·50N 4°56'·12W
Move G con Lt buoy **Doom Bar** FI.G.5s in 50°33'·42N 4°56'·21W to 50°33'·40N 4°56'·28W (ILNW 622/19)

2700+3 (Ed 5/2016) WGS 84

Conwy Bay (Plan A)

Insert drying height -2m in 53°17'·85N 3°53'·95W, extend approx. 0m contour SW to enclose plus delete depth 2·1m & assoc. 2m contour close S. (ILNW 594/19)

Conwy Bay (Plan A)

Insert lgd *Less water* centred on:
53°19'·00N 3°53'·00W
53°17'·36N 3°55'·20W (ILNW 640/19)

2700+4 (Ed 5/2016) WGS 84

Caernarfon Bar

Move Lt buoy:
C3 in 53°07'·17N 4°23'·95W to 53°07'·20N 4°24'·01W plus amend Lt desc. FI(3)G.10s to Q.G
C4 in 53°07'·09N 4°22'·84W to 53°07'·16N 4°23'·03W
C6 in 53°07'·08N 4°21'·74W to 53°07'·21N 4°21'·95W (ILNW 556/19)

Caernarfon Bar (Plan E)

Move G con Lt buoy **C3** in 53°07'·17N 4°23'·95W to 53°07'·20N 4°24'·01W plus amend Lt desc. FI(3)G.10s to Q.G (ILNW 557/19)

Beaumaris (Plan A)

Insert depth 1·6m in 53°15'·53N 4°05'·21W & extend 2m contour N to enclose. Delete depth 3·2m close SW (ILNW 639/19)

2700+12 (Ed 5/2016) WGS 84

Off Smalls TSS

Delete Y spher. Lt buoy FI(5)Y.20s in 51°50'·3N 5°50'·4W (ILNW 644/19)

2800+7 (Ed 11/2012) WGS 84

Fort William W

Insert Y spher. Lt buoy FI.Y in:
56°48'·98N 5°07'·79W
56°48'·88N 5°07'·95W
A pontoon has been established in the channel between these buoys (ILNW 612/19)

2900+5 (Ed 4/2013) WGS 84

Glenmullan Jetty, Loch Long

Works are underway to upgrade Glenmullan jetty.
Add lgd *Works in progress (2019)* centred on 56°07'·85N 4°48'·70W (ILNW 560/19)

2900+7 (Ed 4/2013) WGS 84
Irvine
Delete Lt:
Fl.G in 55°36'·2N 4°42'·1W
F.R + F.G in 55°36'·4N 4°41'·5W (ILNW 626/19)

3200 (Ed 10/2018) WGS 84
Menorca, Isla del Aire (3200.7)
Replace Lt sector with halo at Lt Fl.5s53m18M in 39°48'·0N 4°17'·6E (ILNW 596/19)

Isla del Aire (3200.24)
Replace Lt sector with halo at Lt Fl.5s53m18M in 39°47'·97N 4°17'·59E (ILNW 596/19)

Menorca SE (3200.25)
Replace Lt sector with halo at Lt Fl.5s53m18M in 39°48'·0N 4°17'·6E (ILNW 596/19)

Border label (3200.24) (*certain copies only*)
The degree latitude border label should read 39°50'N not 40°50'N. (ILNW 619/19)

3220 (Ed 7/2019) WGS 84
Puerto de Jávea (3220.10 Plan A)
Amend duration of Lt Fl(4)R.6s9m3M to 11s in 38°47'·77N 0°11'·16E (ILNW 621/19)

M6 (Ed 11/2016) WGS 84
Ajaccio (Plan D)
Insert:
G starboard con Lt buoy **No 1** Fl.G.4s in 41°55'·71N 8°44'·84E
R port can Lt buoy **No 2** Fl.R.4s in 41°55'·70N 8°44'·79E
G con buoy **No 3** in 41°55'·77N 8°44'·76E
R can buoy **No 4** in 41°55'·75N 8°44'·73E
G starboard con Lt buoy **No 5** Fl(2)G.6s in 41°55'·82N 8°44'·69E (ILNW 603/19)

M10 (Ed 5/2019) WGS 84
Golfe du Lion
Delete Lt Fl(2)R.18M in 43°21'·9N 4°35'·1E (ILNW 631/19)

M14 (Ed 4/2017) WGS 84
Barcelona Harbour (Plan A)
Move Lt Q.G in 41°20'·51N 2°10'·24E to 41°20'·31N 2°10'·17E (ILNW 607/19)

Pte de Beauduc SE
Delete Lt Fl(2)R.10s18M in 43°21'·9N 4°35'·1E (ILNW 631/19)

M15 (Ed 4/2015) WGS 84
Îles d' Hyères, Banc du Magaud
Insert Y special can Lt buoy ODAS Fl(5)Y.20s in 43°02'·57N 6°35'·79E (ILNW 568/19)

Îles d' Hyères, Île du Levant S (Plan B)
Insert Y special can Lt buoy ODAS Fl(5)Y.20s in 42°59'·88N 6°26'·58E (ILNW 569/19)

Villefrance-sur-Mer (Plan F)
Amend Lt Q.WR.8m12/8M to DirQ.WR.8m8/6M in 43°41'·96N 7°18'·63E. There have been changes to the Lt sectors as follows:
000° - R - 350° - W - 000° (ILNW 593/19)

Baie de Angès
Delete Y spher. Lt buoy Fl(5)Y.20s in 43°38'·06N 7°13'·85E (ILNW 604/19)

Pte de Beauduc SE
Delete Lt Fl(2)R.10s26m18M plus assoc. R halo in 43°21'·9N 4°35'·0E (ILNW 631/19)

M16 (Ed 7/2016) WGS 84
Approaches to La Spezia (Plan D)
Delete Lt:
F.RG(vert)8m3M in 44°06'·14N 9°51'·38E
minor G in 44°05'·72N 9°51'·81E
minor R in 44°05'·69N 9°51'·81E (ILNW 618/19)

M18 (Ed 4/2019) WGS 84
Golfo di Salerno
Amend Lt desc F.R.5s8M to F.R.5s8M&F.R.7m8M in 40°37'·9N 14°36'·1E (ILNW 548/19)

M22 (Ed 7/2018) WGS 84

Hefa (Haifa) (Plan C)

Delete Y special spher. Lt buoy Q in:

32°51'·85N 35°00'·90E

32°51'·65N 35°01'·18E

32°51'·29N 35°01'·28E

32°50'·82N 35°01'·66E

32°50'·74N 34°58'·24E

Delete Y special pillar Lt buoy Q in:

32°50'·20N 35°01'·72E

32°49'·75N 35°00'·63E (ILNW 570/19)

Hefa (Haifa) (Plan C)

Insert:

R port pillar Lt buoy Mo(A)R.8s in 32°51'·21N 35°01'·11E

G starboard pillar Lt buoy Mo(A)G.8s in 32°51'·06N 35°00'·83E

RGR pillar Lt buoy FI(2+1)R.10s in 32°49'·30N 35°01'·26E (ILNW 608/19)

M29 (Ed 7/2015) WGS 84

Adriatic Sea

Insert firing practice area line joining:

40°21'·4N 18°43'·5E

40°32'·0N 18°32'·0E

40°36'·0N 18°32'·0E

40°39'·0N 18°44'·0E

40°21'·4N 18°44'·0E

Add assoc. label *Firing Practice Area*

Insert circular dangerline and assoc. lgd *Unexploded Ordnance* in:

40°26'·2N 18°40'·6E

40°26'·6N 18°42'·3E (ILNW 547/19)

Golfo di Taranto

Insert firing practice area line joining:

40°17'·0N 16°46'·5E

40°17'·0N 16°51'·0E

39°58'·0N 16°51'·0E

39°58'·0N 16°37'·7E

And:

40°24'·1N 17°14'·2E

40°21'·8N 17°16'·4E

40°16'·5N 17°30'·0E

40°00'·0N 17°30'·0E

40°07'·0N 17°12'·0E

40°24'·5N 17°12'·3E

Add assoc. labels *Firing Practice Area* (ILNW 572/19)

m30 (Ed 2/2015) WGS 84

Augusta

Delete racon sym & assoc. lgd Racon(G) at Lt FI(2)G.8M&FI(2)R.8M in 37°12'·0N 15°13'·8E (ILNW 606/19)

M31 (Ed 8/2015) WGS 84

Palermo (Main chart & Plan B)

Delete racon sym & assoc. lgd Racon(P) at Lt FI(4)15s15M (FI(4)15s15m15M Plan B) in 38°07'·59N 13°22'·51E (ILNW 605/19)

Augusta

Delete racon sym & assoc. lgd Racon(G) at Lt FI(2)G.8M in 37°12'·0N 15°13'·8E (ILNW 606/19)

M33 (Ed 9/2015) WGS 84

Rimini (Plan C)

Insert fog signal Horn Mo(W)48s at Lt FI.R.3s10m8M in 44°04'·90N 12°34'·46E (ILNW 617/19)

M36 (Ed 7/2016) WGS 84

Marsamxett Harbour (Plan D)

The fuel barge in Marsamxett Harbour has been moved.

Insert mooring buoy sym. plus assoc. lgd Fuel barge in 35°54'·01N 14°30'·42E.

Delete fuel barge sym. in 35°53'·85N 14°30'·17E

Delete mooring buoy sym in:

35°53'·84N 14°30'·20E

35°53'·82N 14°30'·16E (ILNW 595/19)

Augusta

Delete racon sym & assoc. lgd Racon(G) at Lt FI(2)G.8M&FI(2)R.8M in 37°12'·0N 15°13'·8E (ILNW 606/19)

M40 (Ed 6/2014) WGS 84
Golfo di Salerno, Amalfi (Plan C)
Insert Lt F.R.7m8M in 40°37'·94N 14°36'·18E (ILNW 548/19)

Îles d' Hyères
Insert Y special can Lt buoy ODAS FI(5)Y.20s in 43°02'·6N 6°35'·3E (ILNW 568/19)

M49 (Ed 8/2015) WGS 84
Palermo
Delete racon sym & assoc. lgd Racon(P) at Lt FI(4)15s15M in 38°07'·66N 13°22'·48E (ILNW 605/19)

M50 (Ed 6/2017) WGS 84
Sicilia, Palermo
Delete racon sym & assoc. lgd Racon(P) at Lt FI(4)15s15M in 38°07'·7N 13°23'·1E (ILNW 605/19)

G11 (Ed 2/2017) WGS 84
N. Kérkira, Ák. Áy. Aikaterini NW
Insert Y con Lt buoy FI.Y.1·5s in 39°49'·53N 19°50'·41E. Add outfall pipe from 39°48'·90N 19°50'·34E (shore) to buoy (ILNW 567/19)

G2 (Ed 8/2013) WGS 84
Approaches to Istanbul (Plan A)
Delete drying Wk sym. in 40°59'·03N 28°55'·30E (ILNW 632/19)

Notification of new edition
A new 2020 edition of this chart will shortly be published. In addition to the listed corrections the chart specification has been improved to show coloured light flashes. Completed harbour works are included on the plan of the approaches to Istanbul. There has been general updating throughout. (ILNW 653/19)

G23 (Ed 8/2018) WGS 84
Yalova
Insert Lt FI(2)G.4s5M in 40°39'·71N 29°16'·44E (ILNW 591/19)

Bakirköy E
Delete drying wreck sym. in 40°59'·03N 28°55'·30E (ILNW 632/19)

g26 (Ed 5/2016) WGS 84
Ák. Filágra SE
Insert dangerous wreck sym. in 38°09'·54N 24°24'·31E (ILNW 634/19)

Nótiós Evvoikós Kólpos
Insert dangerous wreck sym. in 38°18'·61N 23°51'·08E (ILNW 635/19)

G3 (Ed 8/2014) WGS 84
Notification of new edition
A new 2020 edition of this chart will shortly be published. In addition to the listed corrections the chart specification has been improved to show coloured light flashes. Completed harbour works are included on the plan of the approaches to Istanbul. There has been general updating throughout. (ILNW 654/19)

G38 (Ed 4/2015) WGS 84
Iraklion (Plan A)
Delete drying wreck in 35°20'·60N 25°08'·91E (ILNW 544/19)

E1 (Ed 6/2016) WGS 84
Porto das Velas (Plan D)
The breakwater extension is now complete. Insert accompanying block correction centred on 38°40'·63N 28°12'·36W (ILNW 539/19)

Lajes (Plan C)
Insert YB S cardinal Lt Bn VQ(6)+LFI.10s in 38°23'·86N 28°15'·33W. Delete R port can buoy close W (ILNW 541/19)

Lajes (Plan C)
The G starboard con buoy in 38°23'·86N 28°15'·36W is now lit.
Add Lt desc. FI(3)G.8s4M (ILNW 542/19)

E2 (Ed 10/2018) WGS 84
Puerto de Naos & Los Marmoles (Plan L)
Insert R port pillar Lt buoy Q.R in 28°57'·66N 13°32'·06W (ILNW 616/19)

a2 (Ed 3/2016) WGS 84

St Maarten, Witte Kaap

Delete Lt FI(4)WRG.12-9M in 18°00'·4N 63°02'·5W (ILNW 630/19)

A231 (Ed 10/2016) WGS 84

Notification of new edition

A new 2019 edition of this chart will shortly be published. In addition to the listed corrections the chart specification has been improved to show coloured light flashes. Updated depth surveys have been included where applicable. There has been general updating throughout. (ILNW 552/19)

A232 (Ed 10/2016) WGS 84

Notification of new edition

A new 2019 edition of this chart will shortly be published. In addition to the listed corrections the chart specification has been improved to show coloured light flashes. Updated depth surveys have been included where applicable. There has been general updating throughout. (ILNW 553/19)

A233 (Ed 10/2016) WGS 84

Notification of new edition

A new 2019 edition of this chart will shortly be published. In addition to the listed corrections the chart specification has been improved to show coloured light flashes. Updated depth surveys have been included where applicable. There has been general updating throughout. (ILNW 554/19)

a233 (Ed 10/2019) WGS 84

For notice to mariners for chart A233 please refer to A231 and A232 respectively (ILNW 581/19)

A3 (Ed 10/2012) WGS 84

Sint Maarten, Witte Kaap

Delete Lt FI(4)WRG.12-9M in 18°00'·3N 63°02'·4W plus assoc. Lt sector & limit of visibility. (ILNW 630/19)

A24 (Ed 6/2016) WGS 84

Maho Bay (Plan E)

Insert limit of restricted area, no entry, joining:

18°02'·44N 63°07'·46W (shore)

18°02'·25N 63°07'·42W

18°02'·26N 63°07'·23W (shore)

The area is marked by buoys. Add assoc. lgd (*buoyed*)

Delete restricted area, no anchoring, within Maho Bay. (ILNW 550/19)

St Barthélemy N

A marine reserve has been established in Baie de Saint Jean. Insert limit of restricted area, marine reserve, joining:

17°54'·62N 62°50'·42W (shore)

17°54'·48N 62°49'·85W (shore)

The marine reserve is marked by buoys. Add assoc. label *Marine Reserve*. (ILNW 551/19)

Sint Maarten, Great Bay (Main chart & Plan F)

Delete Lt FI(4)WRG.10s12-9M in 18°00'·38N 63°02'·56W plus assoc. Lt sectors (ILNW 580/19)

Sint Maarten, Oyster Pond (Main chart & Plan G)**Main chart**

Delete RW safewater spher. Lt buoy PA in 18°03'·15N 63°00'·43W

Plan G

Insert accompanying block correction centred on 18°03'·25N 63°00'·83W

(Street 2019) (ILNW 582/19)

a27 (Ed 12/2015) WGS 84

North West Channel & Approach to Saint John's Harbour

Insert BY N cardinal pillar Lt buoy VQ in 17°08'·96N 61°53'·14W

Insert lgd *Buoyed channel* orientated WNW to ESE centred on 17°09'·24N 61°52'·89W

Insert restricted area line joining:

17°09'·30N 61°52'·31W

17°09'·32N 61°52'·07W

17°08'·80N 61°52'·08W

17°08'·91N 61°52'·35W

This area is marked by Lt buoys. Add assoc. lgd (*buoyed*).

Insert *Wk*, depth 1·0m in 17°07'·74N 61°52'·64W (ILNW 543/19)

A271 (Ed 6/2017) WGS 84

Northwest Channel & Hog John Bay

Insert accompanying block correction centred on 17°08'·99N 61°51'·85W

Insert *Wk*, depth 1·0m in 17°07'·74N 61°52'·64W (ILNW 543/19)

A28 (Ed 1/2017) WGS 84

Deshaies (Plan A)

Insert:

R starboard pillar Lt buoy **D1** Fl.R.4s in 16°18'·37N 61°47'·84W

G port pillar Lt buoy **D2** Fl.G.4s in 16°18'·39N 61°47'·84W (ILNW 540/19)

B4 (Ed 4/2009) WGS 84

Great River Shoal

Insert YB S cardinal Lt buoy VQ(6)+LFl.10s in 11°10'·91N 60°37'·40W

Delete YB S cardinal Lt buoy Q(6)+LFl.15s *PA* in 11°10'·81N 60°37'·39W (ILNW 592/19)

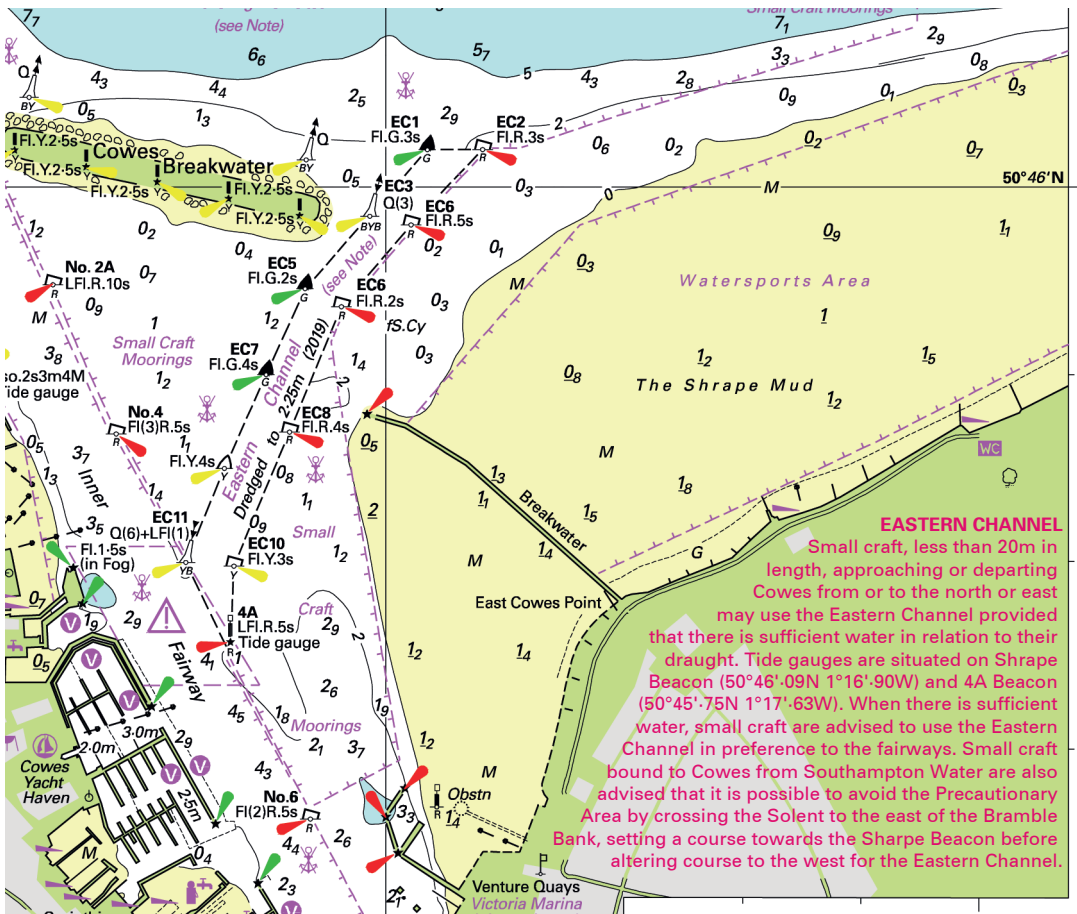
b6 (Ed 5/2009) WGS 84

Tobago, Great River Shoal

Insert YB S cardinal Lt buoy VQ(6)+LFl.10s in 11°10'·91N 60°37'·40W

Delete YB S cardinal Lt buoy Q(6)+LFl.15s in 11°10'·51N 60°37'·61W (ILNW 592/19)

Block correction for A271
ILNW 543/19



Block correction for 2200.9 (Plan C)
 ILLNW 620/19